

# CELEBRATION AT THE WOODS I

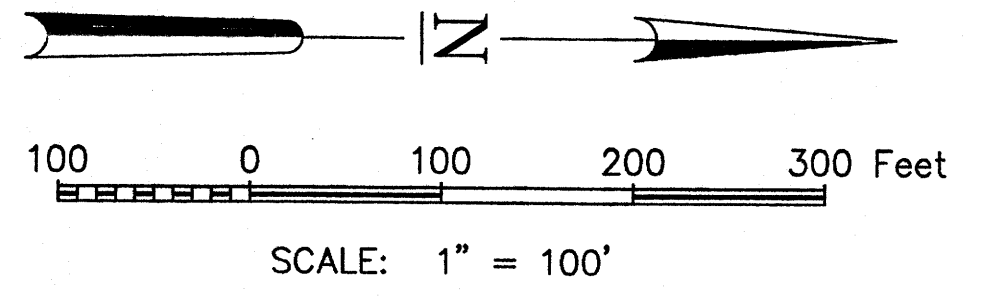
AN ADDITION TO THE CITY OF COWETA, LOCATED IN SECTION 36, TOWNSHIP 18 NORTH, RANGE 15 EAST, WAGONER COUNTY, STATE OF OKLAHOMA

**MONUMENTATION**  
HALF INCH IRON PINS WITH CAPS WILL BE SET AT ALL LOT CORNERS UPON COMPLETION OF CONSTRUCTION.

**LEGEND**  
U/E UTILITY EASEMENT  
B/L BUILDING SETBACK LINE  
R/W RIGHT OF WAY  
ES EACH SIDE  
RESERVE AREA/LANDSCAPE EASEMENT  
STREET ADDRESS  
PLUGGED OIL WELL

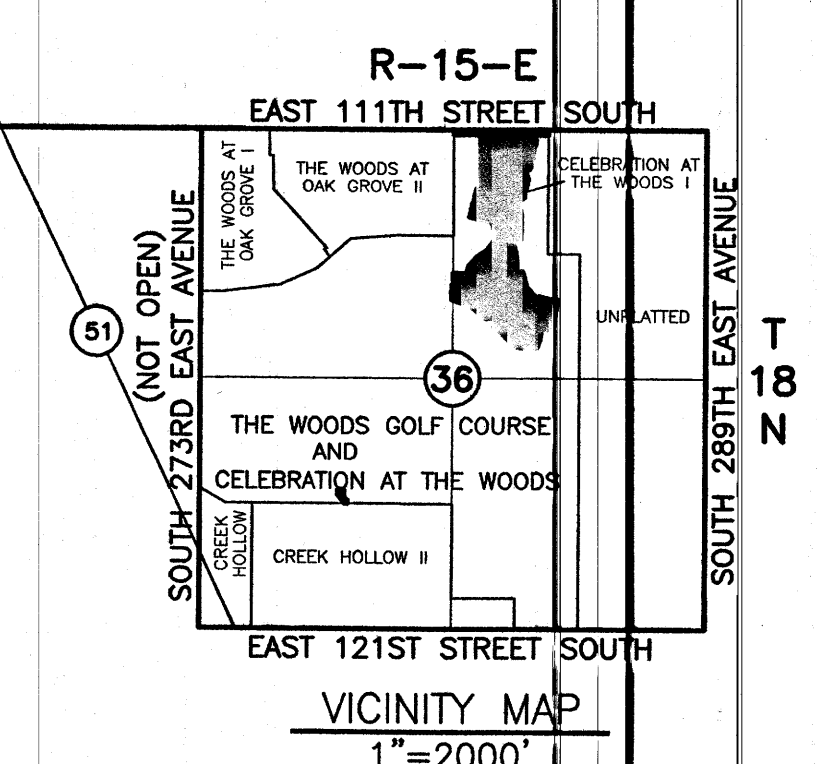
**PROJECT MANAGER**  
GEORGE E. DAY JR., P.E.  
16771 SOUTH 253RD EAST AVENUE  
COWETA, OKLAHOMA 74429  
PHONE: 918.857.5245

**OWNER**  
THE WOODS GOLF COURSE, INC.  
P.O. BOX 745  
COWETA, OKLAHOMA 74429  
PHONE: 918.527.6000

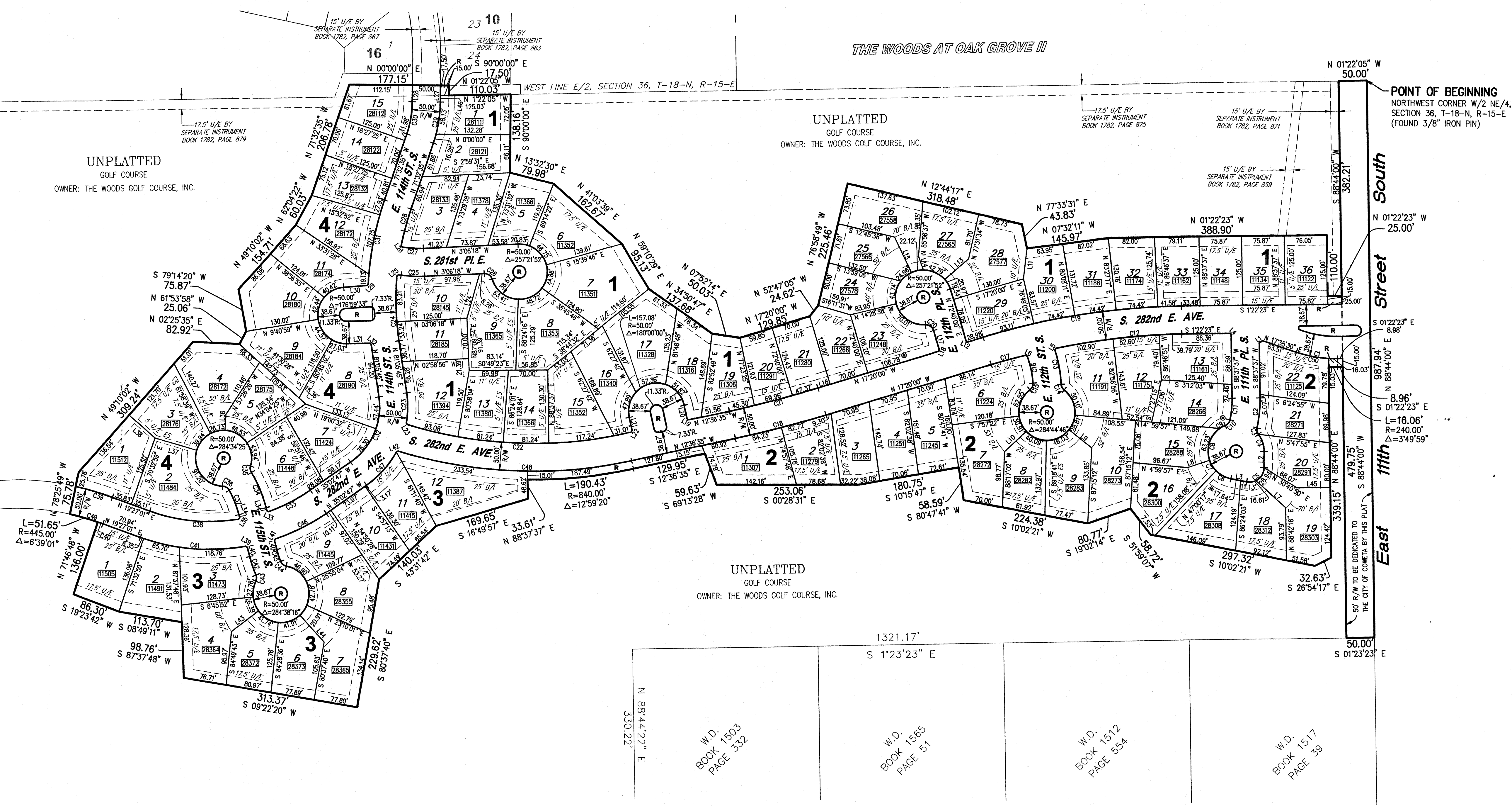


**ENGINEER/LAND SURVEYOR**  
BREISCH & ASSOCIATES, INC.  
501 EAST ALLIANCE BOULEVARD  
SAND SPRINGS, OK 74063  
PH 918.245.9533  
CA #6 (EXPIRES 06-30-10)

**LAND PLANNER**  
PITTMAN POE & ASSOCIATES, INC.  
1709 WEST GRANGER STREET  
BROKEN ARROW, OKLAHOMA 74012  
PHONE: 918.355.8552



TOTAL ACREAGE = 28.76 AC  
SUBDIVISION CONTAINS EIGHTY FIVE (85) LOTS IN FOUR (4) BLOCKS  
BLOCK 1 CONTAINS 36 LOTS  
BLOCK 2 CONTAINS 22 LOTS  
BLOCK 3 CONTAINS 12 LOTS  
BLOCK 4 CONTAINS 15 LOTS



LINE TABLE			CURVE TABLE		
LINE #	LENGTH	BEARING	LINE #	LENGTH	RADIUS
L1	31.29'	N 85°33'27" W	C1	74.47'	255.00'
L2	28.79'	N 90°00'00" W	C2	53.64'	258.00'
L3	28.79'	S 10°22'11" W	C3	12.28'	14.00'
L4	2.00'	S 43°37'37" W	C4	34.20'	50.00'
L5	4.95'	N 57°08'21" E	C5	43.38'	255.00'
L6	3.23'	N 27°19'21" E	C6	30.42'	50.00'
L7	71.00'	N 40°54'01" E	C7	22.28'	50.00'
L8	41.81'	S 19°18'06" E	C8	127.40'	50.00'
L9	59.08'	N 37°56'00" E	C9	43.38'	255.00'
L10	53.13'	S 43°22'19" E	C10	13.62'	14.00'
L11	55.21'	N 83°45'32" W	C11	38.40'	75.00'
L12	2.71'	N 28°55'07" E	C12	225.20'	255.00'
L13	59.29'	N 41°22'20" W	C13	42.17'	255.00'
L14	25.96'	N 70°11'25" E	C14	12.09'	14.00'
L15	70.00'	S 64°14'02" W	C15	13.84'	14.00'
L16	22.84'	S 17°20'00" E	C16	49.54'	75.00'
L17	34.83'	N 72°40'00" E	C17	11.29'	50.00'
L18	3.17'	S 62°20'00" E	C18	166.28'	255.00'
L19	3.17'	S 32°23'25" E	C19	357.80'	185.00'
L20	24.54'	S 77°23'25" E	C20	18.92'	14.00'
L21	24.45'	N 77°23'25" E	C21	162.83'	175.00'
L22	3.16'	N 58°05'21" W	C22	41.91'	255.00'
L23	3.24'	S 58°22'18" W	C23	54.03'	70.00'
L24	84.21'	N 74°54'40" W	C24	116.48'	500.00'
L25	3.14'	N 38°44'17" W	C25	41.91'	255.00'
L26	3.13'	N 54°08'50" E	C26	18.62'	255.00'
L27	29.40'	S 90°00'00" E	C27	32.62'	75.00'
L28	29.39'	S 90°00'00" E	C28	74.41'	255.00'
L29	3.22'	N 45°59'57" W	C29	68.02'	485.00'
L30	41.28'	S 43°43'42" E	C30	84.11'	315.00'
L31	41.27'	S 14°32'22" E	C31	154.59'	500.00'
L32	3.24'	N 39°41'12" E	C32	133.74'	120.00'
L33	3.12'	N 28°08'41" E	C33	84.11'	315.00'
L34	5.98'	S 75°33'32" E	C34	67.21'	255.00'
L35	3.12'	N 57°33'27" E	C35	11.71'	14.00'
L36	28.00'	N 87°23'47" W	C36	14.21'	14.00'
L37	77.34'	S 16°24'24" W	C37	48.22'	175.00'
L38	61.77'	S 40°02'50" W	C38	150.81'	315.00'
L39	3.21'	N 32°10'00" E	C39	68.02'	485.00'
L40	16.77'	N 75°13'32" E	C40	9.56'	14.00'
L41	3.28'	N 61°43'06" W	C41	190.81'	315.00'
L42	3.28'	N 23°38'12" W	C42	34.58'	255.00'
L43	60.00'	S 37°02'26" E	C43	11.68'	14.00'
L44	63.84'	N 47°07'52" E	C44	14.13'	14.00'
L45	59.89'	N 01°16'00" E	C45	21.39'	175.00'
L46	11.90'	S 90°00'00" E	C46	101.92'	315.00'
			C47	69.91'	120.00'
			C48	421.03'	2914.24'
			C49	61.21'	485.00'
			C50	58.43'	255.00'

Certified True Copy  
CAROLYN KUSLER, COUNTY CLERK  
Wagoner County, Okla.  
By *Carolyn Kusler*

**CELEBRATION AT THE WOODS I**  
FINAL PLAT  
SHEET 1 OF 3  
DATE OF PREPARATION: JULY 20, 2007

