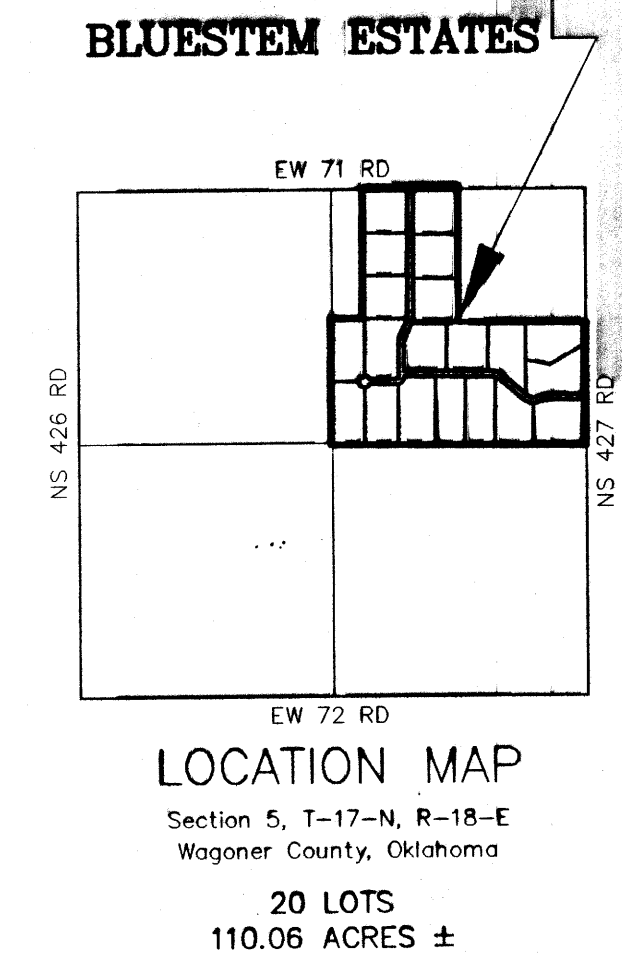
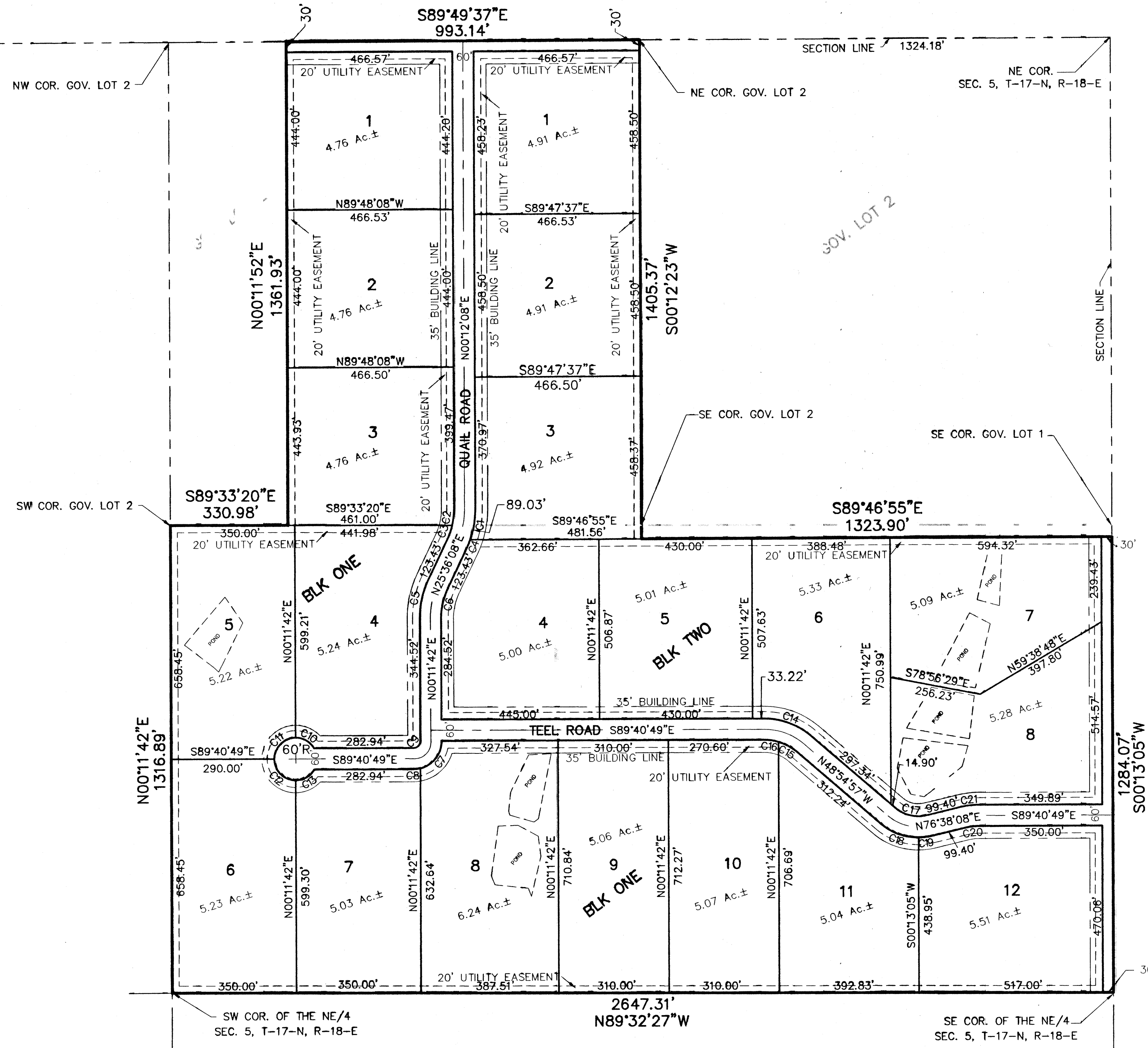
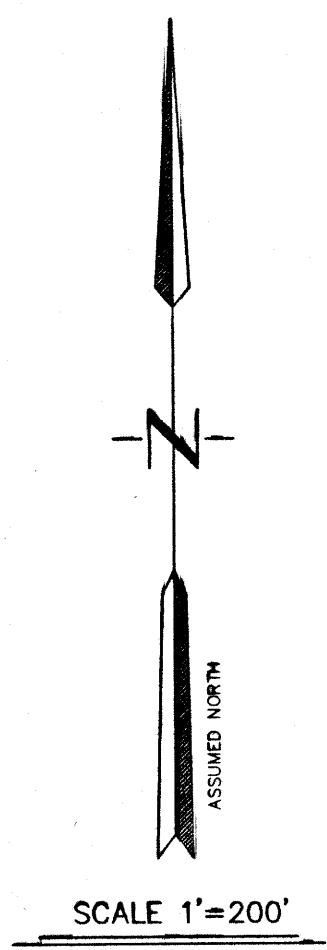


BLUESTEM ESTATES

PART OF THE NE/4 OF SEC. 5, T-17-N, R-18-E, WAGONER CO., OKLA.
 CONTAINING 110.06 ACRES +/-

MARCH 2004



CURVE TABLE			
CURVE	LENGTH	RADIUS	DELTA
C1	89.03	260.00	19°37'08"
C2	46.87	200.00	13°25'39"
C3	41.79	200.00	11°58'21"
C4	26.23	260.00	05°46'51"
C5	115.29	260.00	25°24'26"
C6	88.69	200.00	25°24'26"
C7	105.22	79.58	75°45'10"
C8	19.95	79.57	14°22'00"
C9	30.79	19.57	90°07'29"
C10	62.96	60.00	60°07'29"
C11	94.12	60.00	89°52'31"
C12	94.38	60.00	90°07'29"
C13	62.70	60.00	59°52'31"
C14	142.29	200.00	40°45'52"
C15	59.66	140.00	24°24'52"
C16	39.95	140.00	16°21'00"
C17	95.03	100.00	54°26'56"
C18	114.44	160.00	40°58'56"
C19	37.61	160.00	13°28'00"
C20	33.44	140.00	13°41'03"
C21	47.77	200.00	13°41'03"

OWNER - DEVELOPER:
 MARSON INVESTMENTS LLC.
 6161 W. 820 RD.
 FT. GIBSON, OKLA. 74434
 TEL: (918) 478-9707

ROADS WILL BE
 MAINTAINED BY
 WAGONER COUNTY

SURVEYOR:
 HOWARD CONSULTING
 9900 W. 128th St. So.
 OKTAHA, OKLA. 74450
 Phone: (918) 686-0564