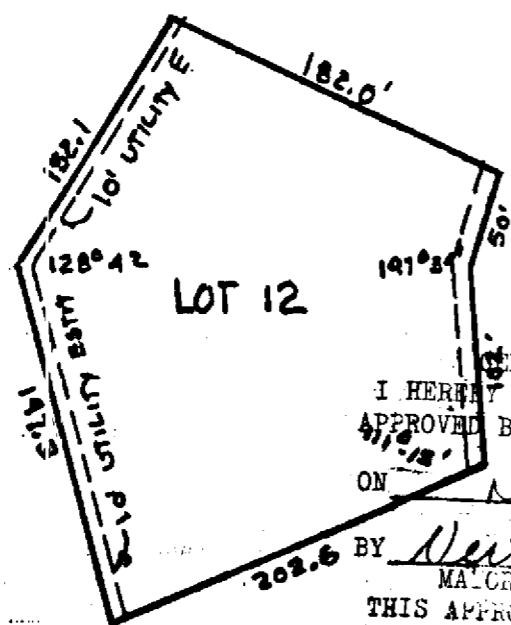


SHERIDAN ENGINEERING
P O BOX 219
HASKELL, OKLAHOMA 74436
October 25, 1991

REPLATTING OF LOT 4 AND LOT 6
OF BLOCK 3
OF
AMENDED PLAT OF BRIDLE TRAILS ESTATES
INTO

LOT 12 BLOCK 3 OF AMENDED PLAT OF BRIDLE TRAILS ESTATES



FINAL PLATT
CERTIFICATE OF APPROVAL
I HEREBY CERTIFY THAT THIS PLATT WAS
APPROVED BY THE COWETA CITY COUNCIL
ON November 4, 1991
BY Neeta Winters
MAYOR OF COWETA COUNTY
THIS APPROVAL IS VOID IF THE ABOVE
SIGNATURE IS NOT ENDORSED BY THE CITY CLERK
BY Joyce Perry
CITY CLERK

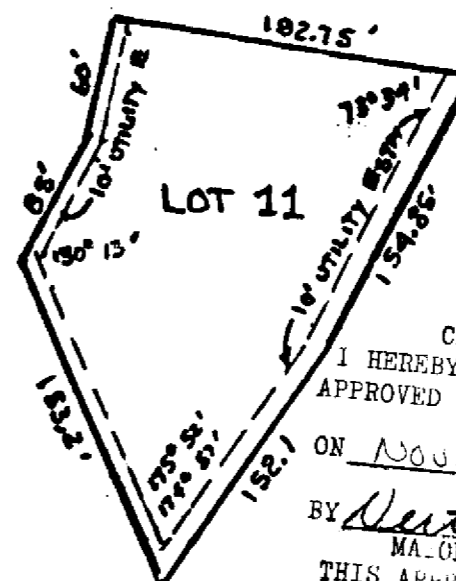
I, John F. Sheridan, a Registered Land Surveyor in the State of Oklahoma have calculated and drawn to plat the old dimensions of Lot 4 and Lot 6 of Block 3 all of the AMENDED PLAT BRIDLE TRAILS ESTATES and have combined same properties into a new tract of Land to be called, Lot 12 Block 3 of AMENDED PLAT BRIDLE TRAILS ESTATES, and that I have done same correct to the best of my current knowledge.

John F. Sheridan
John F. Sheridan L.S. 345

SHERIDAN ENGINEERING
P O BOX 219
HASKELL, OKLAHOMA 74436
October 25, 1991

REPLATTING OF LOT 3 AND THE S/2 OF LOT 2
OF BLOCK 3
OF
AMENDED PLAT OF BRIDLE TRAILS ESTATES
INTO

LOT 11 BLOCK 3 OF AMENDED PLAT OF BRIDLE TRAILS ESTATES



FINAL PLATT
CERTIFICATE OF APPROVAL
I HEREBY CERTIFY THAT THIS PLATT WAS
APPROVED BY THE COWETA CITY COUNCIL
ON November 4, 1991
BY Neeta Winters
MAYOR OF COWETA COUNTY
THIS APPROVAL IS VOID IF THE ABOVE
SIGNATURE IS NOT ENDORSED BY THE CITY CLERK
BY Joyce Perry
CITY CLERK

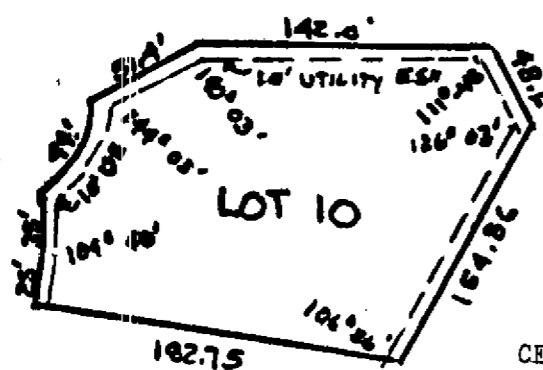
I, John F. Sheridan, a Registered Land Surveyor in the State of Oklahoma have calculated and drawn to plat the old dimensions of Lot 3 and the S/2 of Lot 2 of Block 3 all of the AMENDED PLAT BRIDLE TRAILS ESTATES and have combined same properties into a new tract of Land to be called, Lot 11 Block 3 of AMENDED PLAT BRIDLE TRAILS ESTATES, and that I have done same, correct to the best of my current knowledge.

John F. Sheridan
John F. Sheridan L.S. 345

SHERIDAN ENGINEERING
P O BOX 219
HASKELL, OKLAHOMA 74436
October 25, 1991

REPLATTING OF LOT 1 AND THE N/2 OF LOT 2
OF BLOCK 3
OF
AMENDED PLAT OF BRIDLE TRAILS ESTATES
INTO

LOT 10 BLOCK 3 OF AMENDED PLAT OF BRIDLE TRAILS ESTATES



FINAL PLATT
CERTIFICATE OF APPROVAL
I HEREBY CERTIFY THAT THIS PLATT WAS
APPROVED BY THE COWETA CITY COUNCIL
ON November 4, 1991
BY Neeta Winters
MAYOR OF COWETA COUNTY
THIS APPROVAL IS VOID IF THE ABOVE
SIGNATURE IS NOT ENDORSED BY THE CITY CLERK
BY Joyce Perry
CITY CLERK

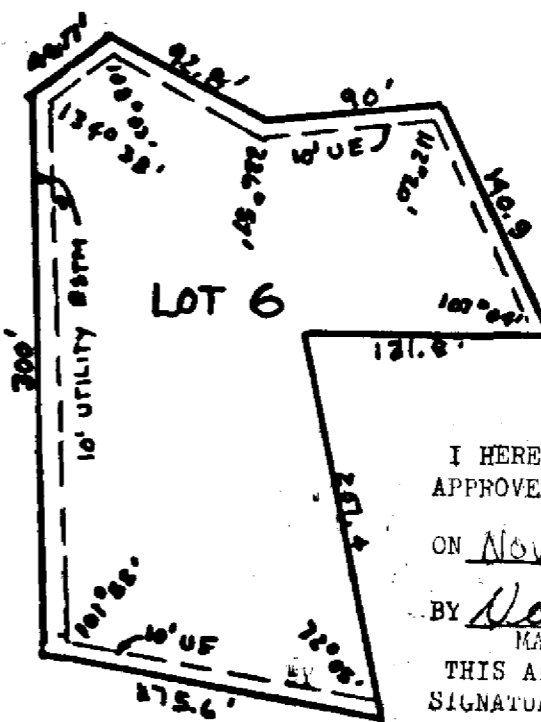
I, John F. Sheridan, a Registered Land Surveyor in the State of Oklahoma have calculated and drawn to plat the old dimensions of Lot 1 and the N/2 of Lot 2 of Block 3 all of the AMENDED PLAT BRIDLE TRAILS ESTATES and have combined same properties into a new tract of Land to be called, Lot 10 Block 3 of AMENDED PLAT BRIDLE TRAILS ESTATES, and that I have done same correct to the best of my current knowledge.

John F. Sheridan
John F. Sheridan L.S. 345

SHERIDAN ENGINEERING
P O BOX 219
HASKELL, OKLAHOMA 74436
October 25, 1991

REPLATTING OF LOT 1 AND LOT 2
OF BLOCK 2
OF
AMENDED PLAT OF BRIDLE TRAILS ESTATES
INTO

LOT 6 BLOCK 2 OF AMENDED PLAT OF BRIDLE TRAILS ESTATES



FINAL PLATT
CERTIFICATE OF APPROVAL
I HEREBY CERTIFY THAT THIS PLATT WAS
APPROVED BY THE COWETA CITY COUNCIL
ON November 4, 1991
BY Neeta Winters
MAYOR OF COWETA COUNTY
THIS APPROVAL IS VOID IF THE ABOVE
SIGNATURE IS NOT ENDORSED BY THE CITY CLERK
BY Joyce Perry
CITY CLERK

I, John F. Sheridan, a Registered Land Surveyor in the State of Oklahoma have calculated and drawn to plat the old dimensions of Lot 1 and Lot 2 of Block 2 all of the AMENDED PLAT BRIDLE TRAILS ESTATES and have combined same properties into a new tract of Land to be called, Lot 6 Block 2 of AMENDED PLAT BRIDLE TRAILS ESTATES, and that I have done same, correct to the best of my current knowledge.

John F. Sheridan
John F. Sheridan L.S. 345