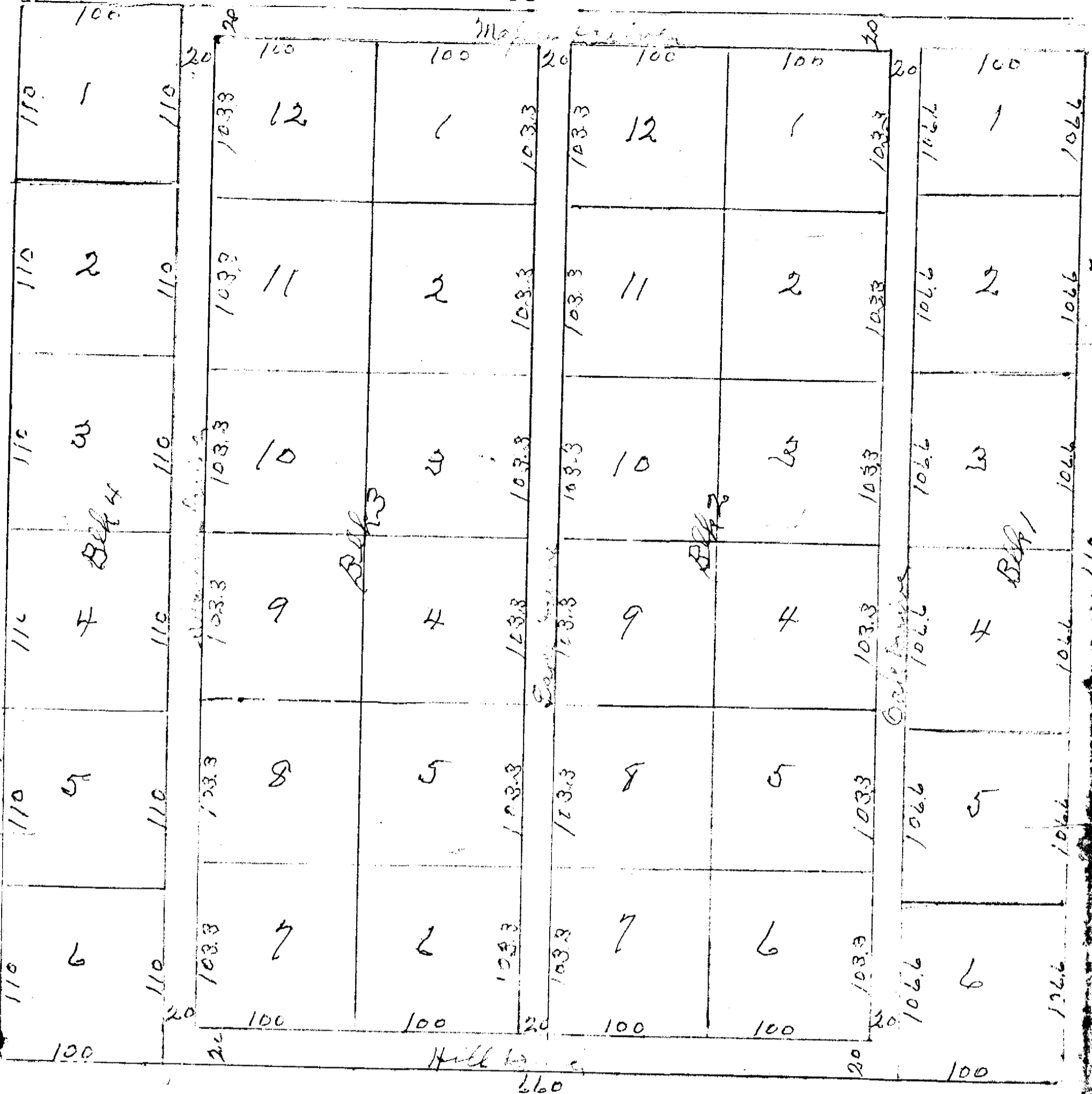


N

660

Map of Cabin Sites



I, August Thieleke, County Surveyor of Wagoner County, Oklahoma, hereby certify that I have surveyed the above tract described as follows:

Beginning at the Southeast corner of Lot 4, Section 1, Township 18 North, Range 19 East in Wagoner County, Oklahoma; Thence North a distance of 1320 feet; Thence West a distance of 1320 feet; Thence South a distance of 1320 feet to the point of beginning, known as the Sub-Division of Big Hollow Cabin Sites.

*August Thieleke*  
August Thieleke  
County Surveyor

Subscribed and sworn to by August Thieleke, before Frances Manor, Notary Public in and for Wagoner County, Oklahoma, on this 20th day of February, 1957.

*Frances Manor*  
Frances Manor  
Notary Public

My commission expires: April 6, 1959

STATE OF OKLAHOMA, CO. OF WAGONER, THEN for Record  
in this office on the 20th day of February, 1957.  
1957 at 12:25 o'clock, JACK S. JONES, County Clerk  
By *Mame Boyd, Supt.*  
Page 12A

I, August Thieleke, County Surveyor of Wagoner County, Oklahoma, do hereby certify that I have carefully and accurately surveyed and staked into lots, blocks and streets the Southeast ten acres of Lot 4 of Section 1, Township 18 North, Range 19 East, in Wagoner County, State of Oklahoma; that stakes have been placed on all lot corners and that the plat thereto attached is a true representation of said survey.

*August Thieleke*  
August Thieleke, County Surveyor

State of Oklahoma  
Wagoner County ss

Before me, the undersigned, a notary public in and for said county and state, on this 21st day of February, 1957, personally appeared August Thieleke, to me known to be the identical person who executed the within and foregoing certificate and acknowledged to me that he executed the same as his free and voluntary act and deed for the uses and purposes therein set forth.

*Frances Manor*  
NOTARY PUBLIC

My commission expires March 12, 1959