

PLAT
OF
"ARROWHEAD POINT" CLUB
A SUBDIVISION
OF
U.S. ENGINEERS CLUBSITE NO. 25

LOCATED IN THE SE 1/4 - NW 1/4 - NE 1/4 &
PART OF THE SW 1/4 - NE 1/4 - NE 1/4 OF
SECTION 16 TOWNSHIP 17 NORTH RANGE 19
EAST OF INDIAN BASE & MERIDIAN, WAGONER
COUNTY, OKLAHOMA

Plat Book 3 Page 35
STATE OF OKLAHOMA)
COUNTY OF WAGONER)
Filed for Record in this Office of the
COUNTY CLERK AND RECORDED
SEP 21 1966
AT 2:05
JACK C. JONES, County Clerk
By *M. J. Payne*, Deputy

DESCRIPTION

Beginning at the Southwest Corner of the SE 1/4 - NW 1/4 - NE 1/4 of Section 16, Township 17 North, Range 19 East of the Indian Base & Meridian, Wagoner County, Oklahoma, said beginning corner being marked with concrete monument by Corps of Engineers, U. S. Army; thence along the West boundary of the said SE 1/4 - NW 1/4 - NE 1/4, North 0° - 0' West a distance of 662.50 feet to the Northwest Corner of said SE 1/4 - NW 1/4 - NE 1/4; thence along the North boundary of said SE 1/4 - NW 1/4 - NE 1/4 & the SW 1/4 - NE 1/4 - NE 1/4 of said Section, South 89° - 58' East a distance of 733.2 feet to a 3" x 4" Concrete monument; thence continuing on said boundary South 89° - 58' East a distance of 70.00 feet, more or less, to the 578 Contour of Fort Gibson Reservoir; thence along said contour line
South 23° - 45' East, a distance of 241.5 feet
South 28° - 00' East, a distance of 68.0 feet
South 77° - 00' East, a distance of 425.0 feet
to the South boundary of the SW 1/4 - NE 1/4 - NE 1/4; thence along the South boundary of the SW 1/4 - NE 1/4 - NE 1/4 of said Section, North 89° - 58' - 50" West a distance of 15 feet to a concrete monument; thence continuing along said South boundary of the SW 1/4 - NE 1/4 - NE 1/4 & the SE 1/4 - NW 1/4 - NE 1/4, North 89° - 58' - 50" West a distance of 1112.73 feet to the beginning.

SURVEYOR'S CERTIFICATE

I, F. C. Settle, the undersigned, do hereby certify that I am by profession a civil engineer, and that the annexed plat of "U. S. CORPS OF ENGINEERS' CLUB SITE NO. 25, as described above does correctly represent a survey of said tract made under my supervision, and that all the monuments shown hereon actually exist and that their positions are correctly shown.

Signed and seal imprinted this 15th day of April, 1966.

F. C. Settle
F. C. Settle, Engineer.

OWNER'S CERTIFICATE

STATE OF OKLAHOMA,
COUNTY OF WAGONER, SS.
Know all Men by these Presents: That C. M. Crawford, of Tulsa, Tulsa County, Oklahoma, being the only person interested in the ownership of the property described under the above surveyor's certificate, hereby certifies that he has caused the same to be surveyed into lots, blocks, and streets or drives and easements in conformity with the annexed plat, which he hereby adopts as the plat of the above described land under the name of "Arrowhead Point Subdivision, County of Wagoner, State of Oklahoma, and does hereby dedicate all the streets, drives and easements shown on said plat for the use and benefit of the property owners in this subdivision.

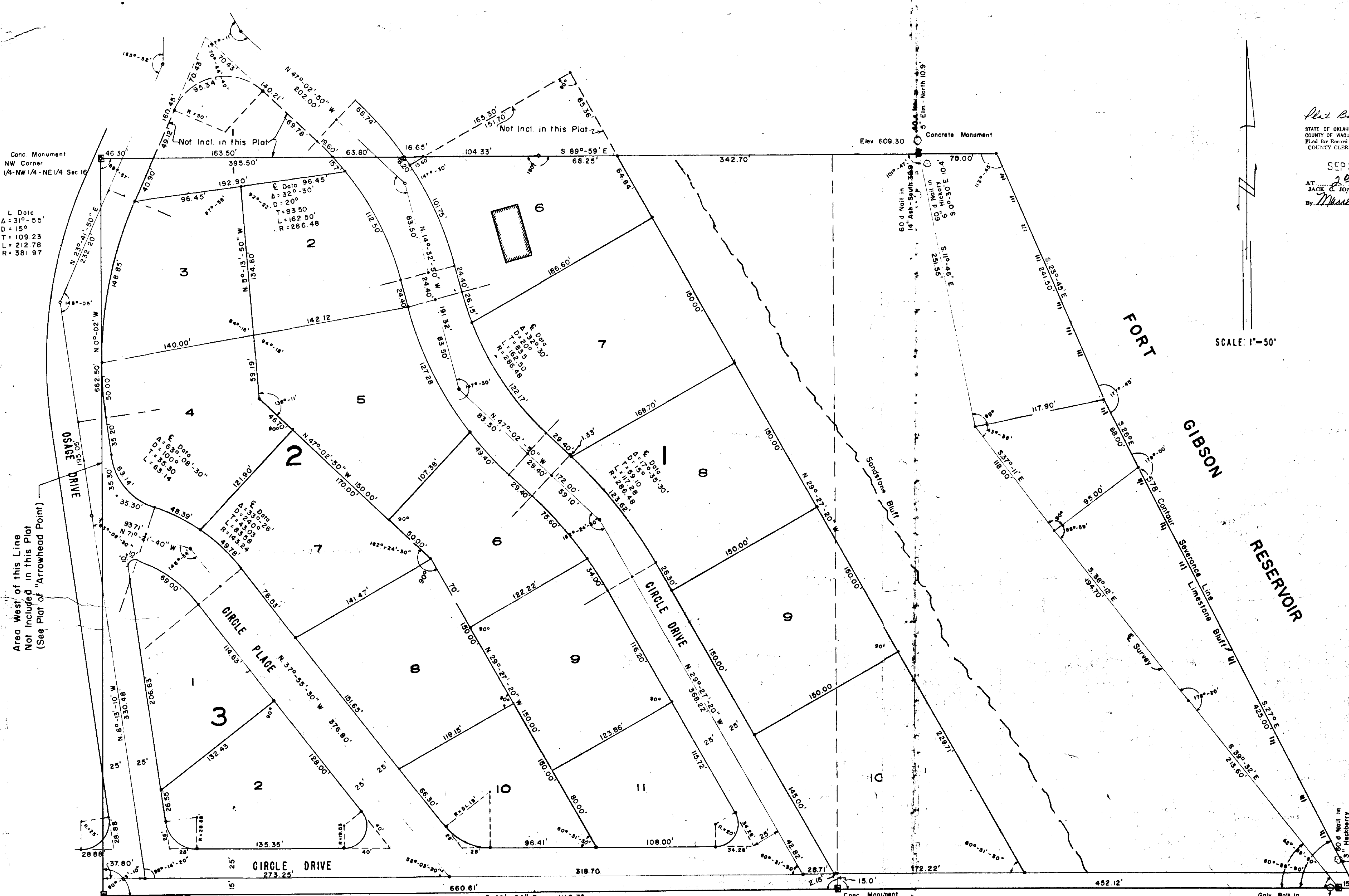
STATE OF OKLAHOMA,
COUNTY OF WAGONER, SS.
Before me, a notary public, in and for the county and state aforesaid, personally appeared C. M. Crawford, a single man, to me known to be the identical person who executed the within and foregoing owner's certificate and acknowledged to me that he executed the same as his free and voluntary act and deed for the uses and purposes therein set forth.

Given under my hand and seal this 20th day of June, 1966.

Com. expires: October 9, 1968.
[Signature]
Notary Public

This is to certify that all taxes including 1965 have been paid on above description.

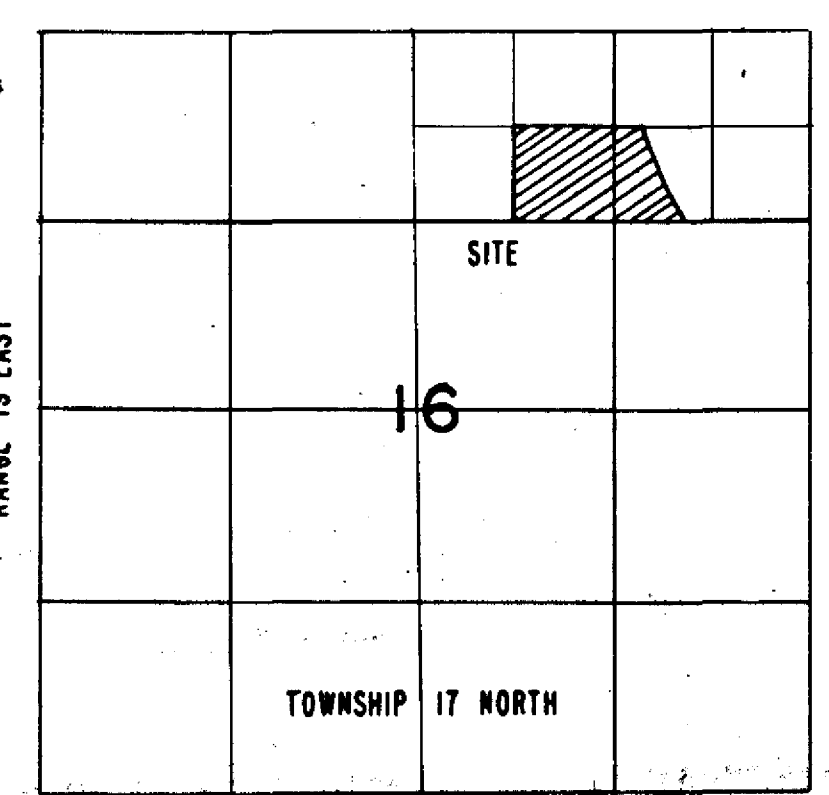
Eugene H. Jones, County Clerk
By *Mary L. Gachery, Deputy*



Conc. Monument
NW Corner
SE 1/4 - NW 1/4 - NE 1/4 Sec 16

Area West of this Line
Not Included in this Plat
(See Plat of "Arrowhead Point")

Conc. Monument
Corps of Engineers
U. S. Army
SW Corner SE 1/4 - NW 1/4 - NE 1/4
Sec 16



SCALE: 1"=1320'

SCALE: 1"=50'