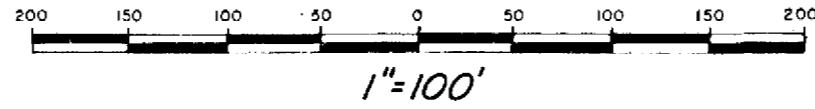


# AMENDED PLAT OF PART OF ANGUS ACRES 2<sup>ND</sup> ADDITION

A SUBDIVISION OF A PART OF THE  
NW  $\frac{1}{4}$  OF SECTION-7, T-18-N, R-15-E.

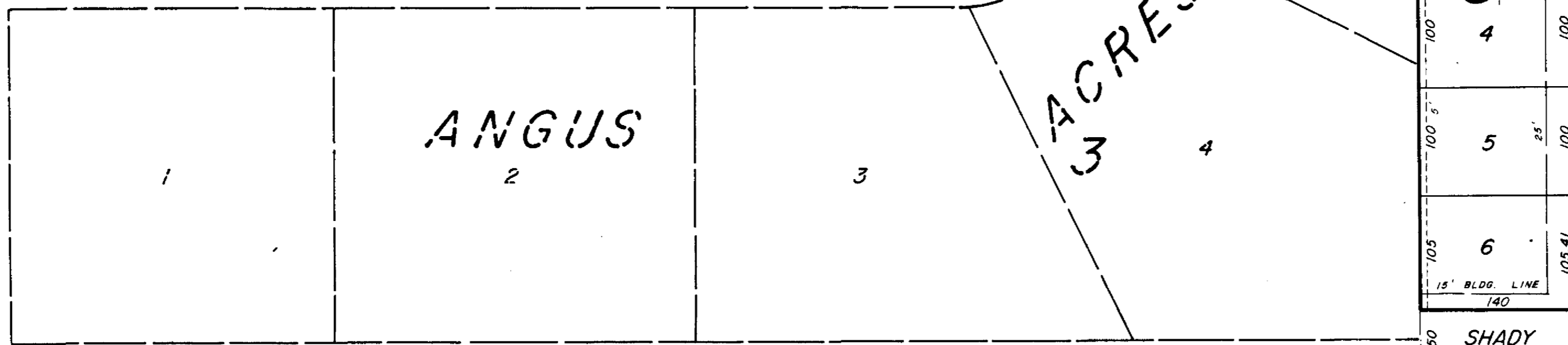
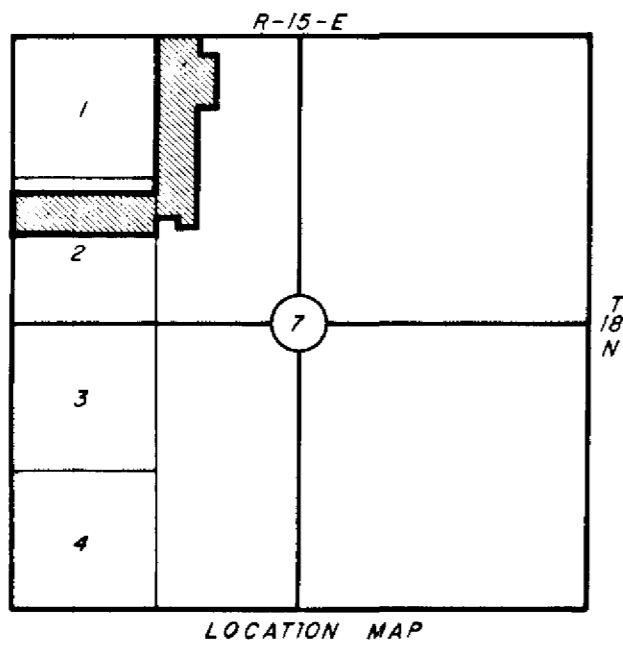
WAGONER COUNTY, OKLA.



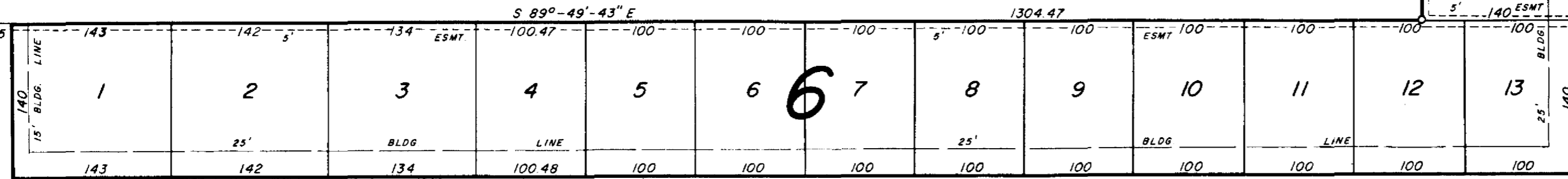
STATE OF OKLAHOMA  
COUNTY OF WAGONER )  
Filed for Record in this Office of the  
COUNTY CLERK AND RECORDED

MAR 26 1959

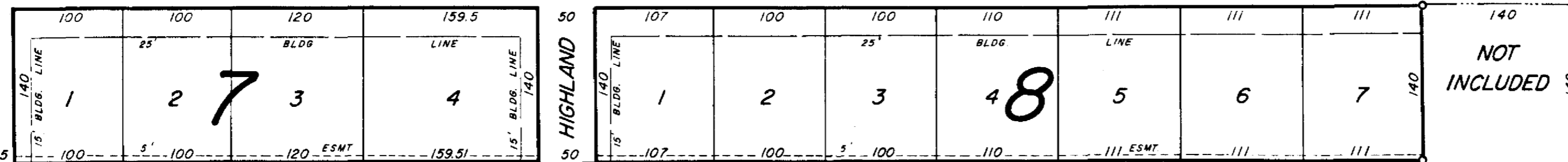
AT 212 O'Clock  
JACK G. JONES, County Clerk  
By *[Signature]* Deputy



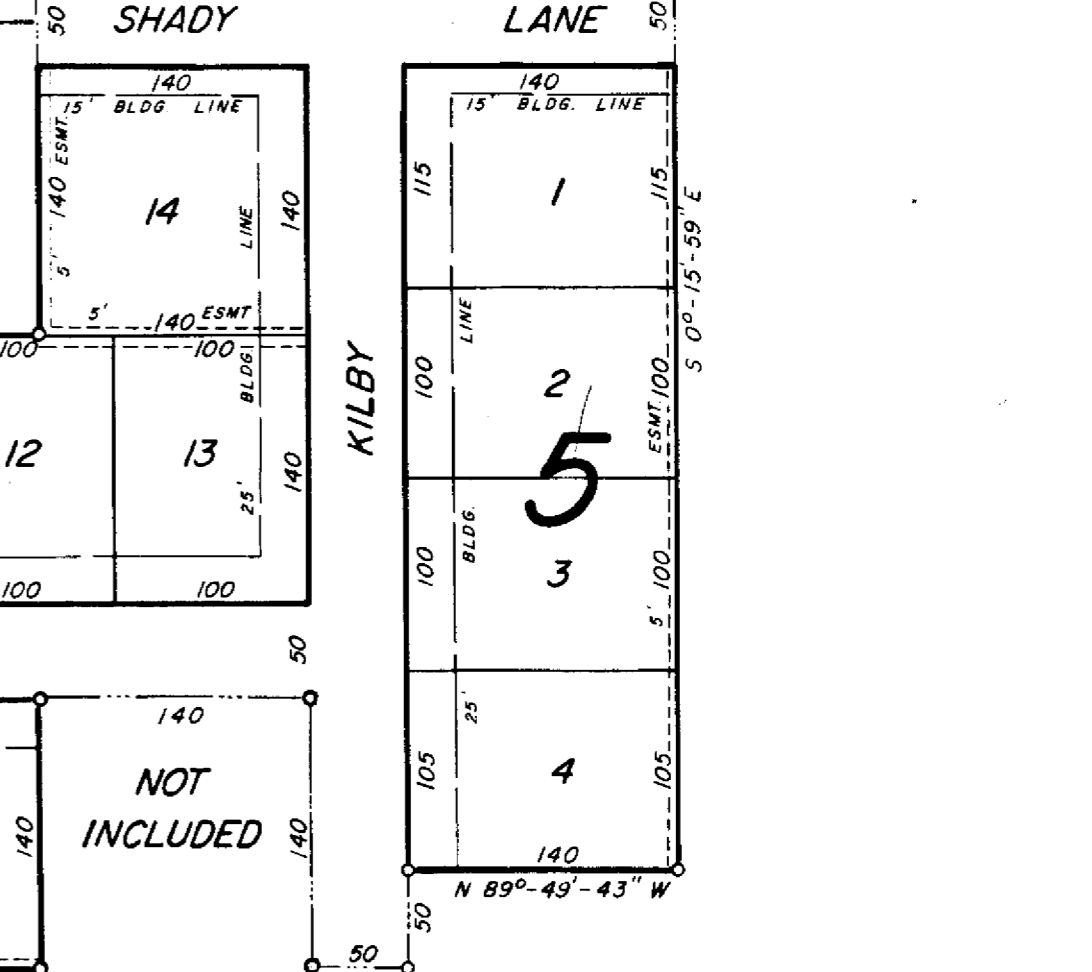
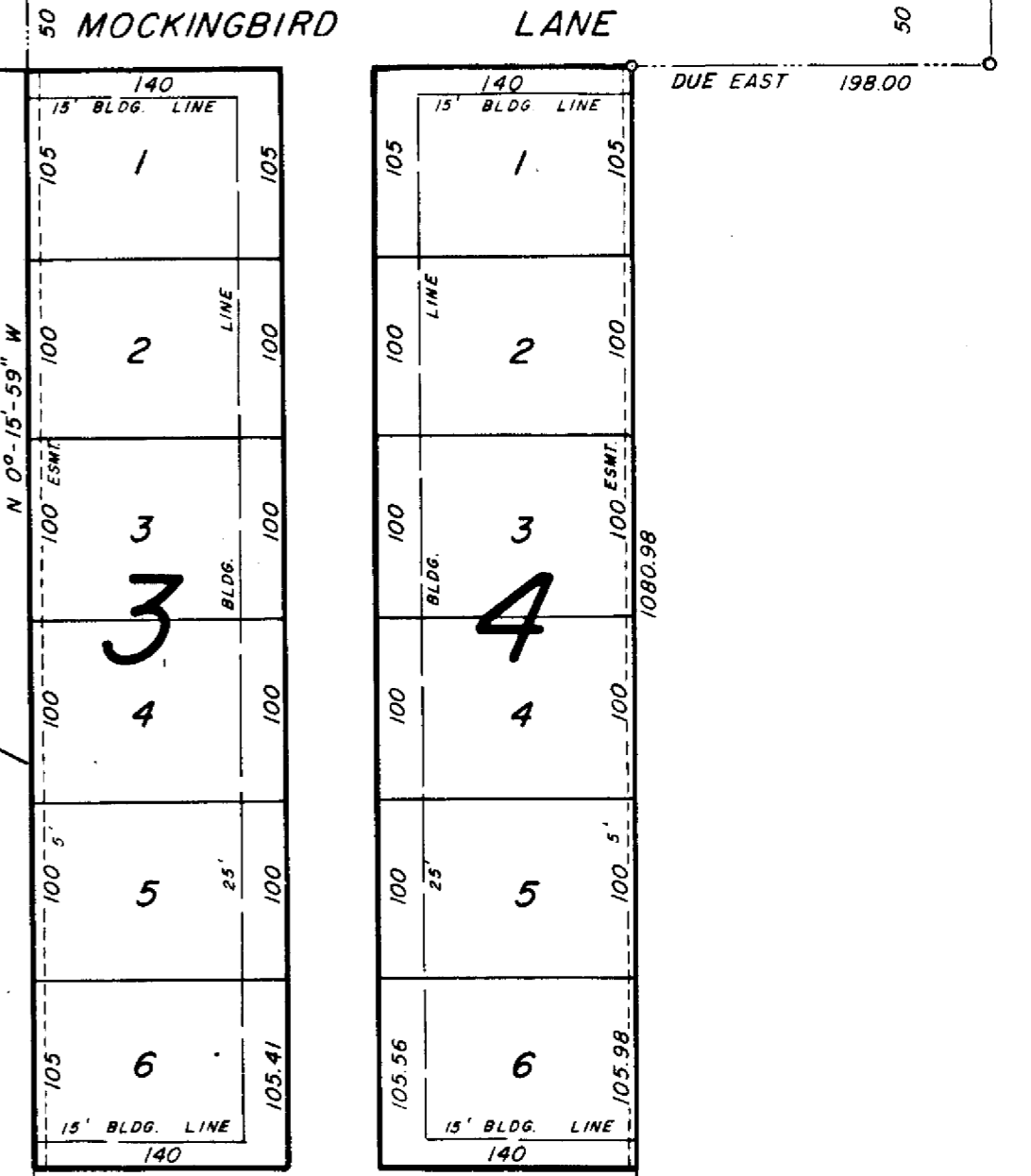
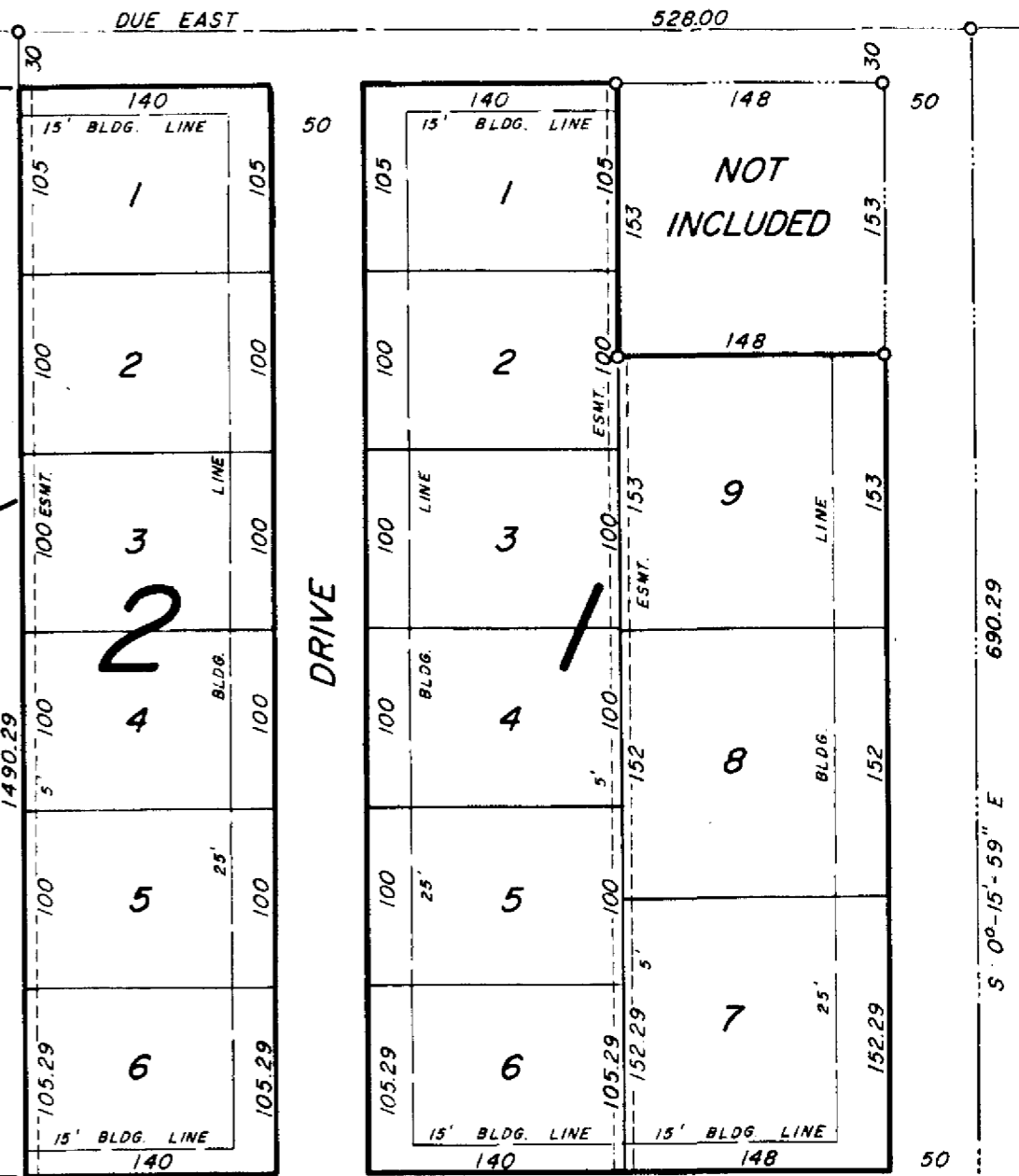
NOT INCLUDED



SIDNEY AVENUE



HIGHLAND AVENUE



**SISEMOR SURVEYING SERVICE**

3611 S. HARVARD TULSA, OKLA RI 7-0011

SURVEY \_\_\_\_\_ BOOK \_\_\_\_\_ PGS. \_\_\_\_\_

DRAWN RV CHECKED \_\_\_\_\_ DATE JAN, 1959

ORDER 6724 SHEET 1 OF 1

SCALE 1"=100' FILE DWR A