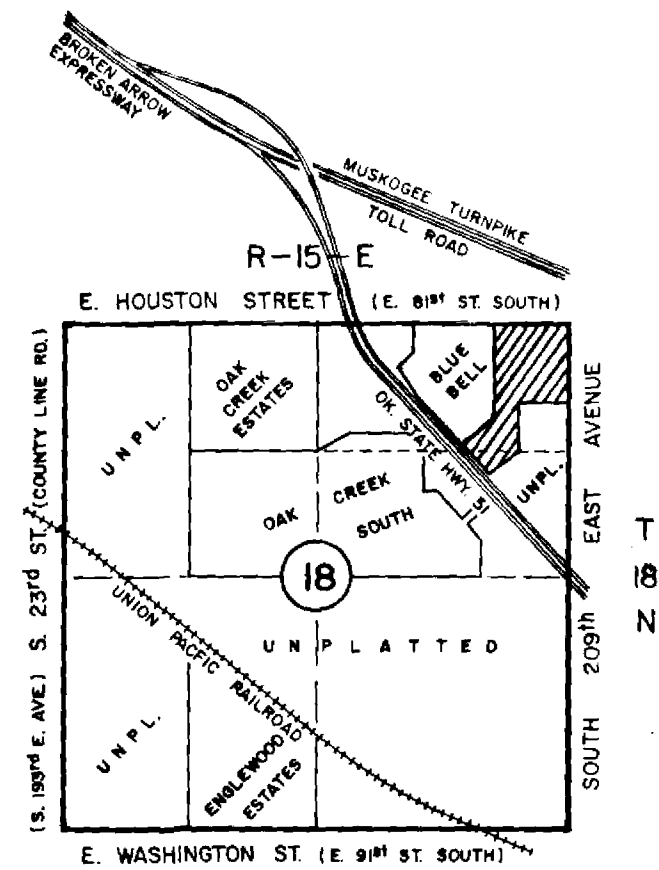


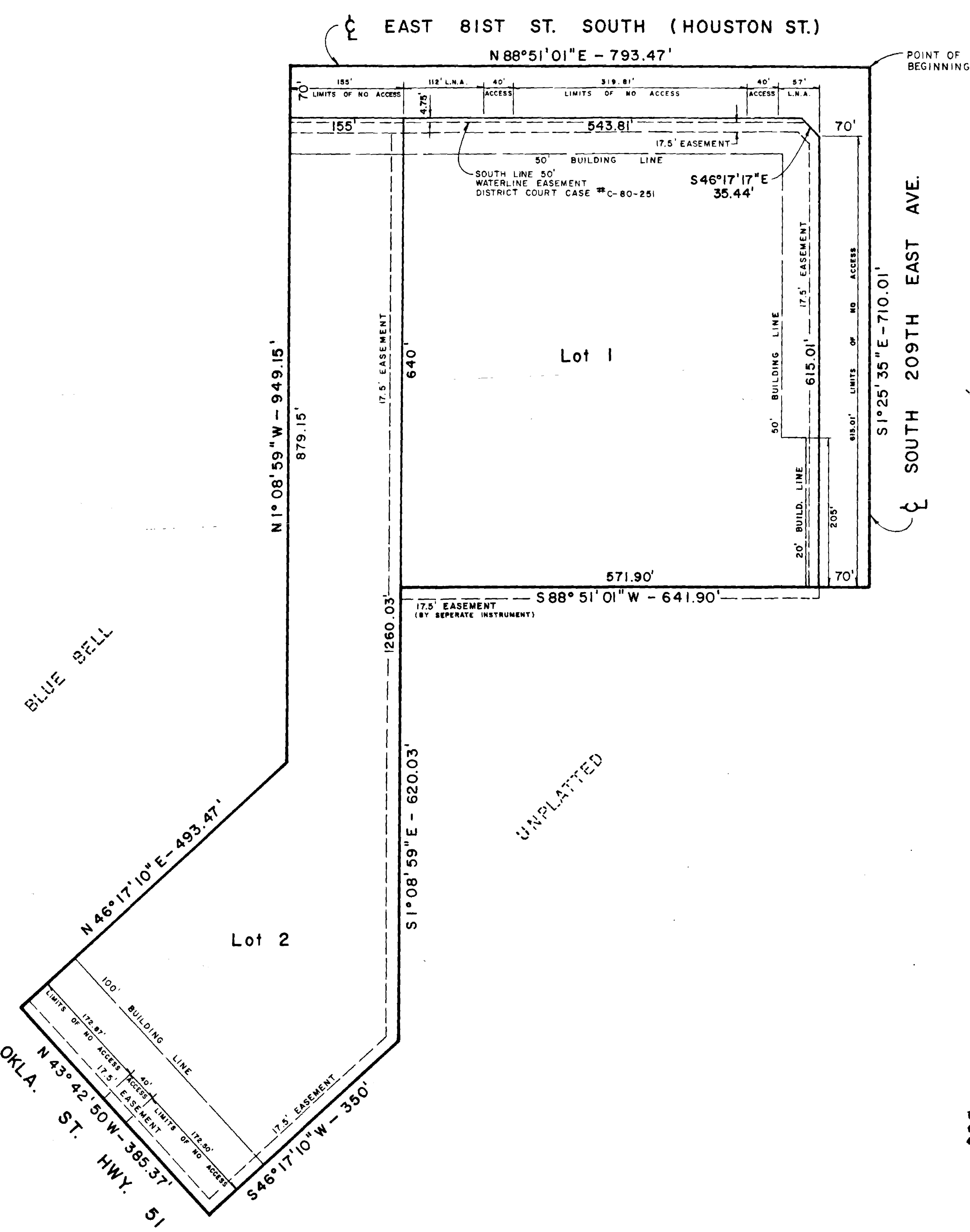
Plant Cabinet 3  
285 A+B

# A.E.S. INDUSTRIAL CENTER

AN ADDITION TO THE CITY OF BROKEN ARROW, BEING A PART OF THE E/2 OF THE NE/4 OF SECTION 18, T-18-N, R-15-E, OF THE INDIAN BASE AND MERIDIAN, WAGONER COUNTY, STATE OF OKLAHOMA  
P.U.D. 68-A

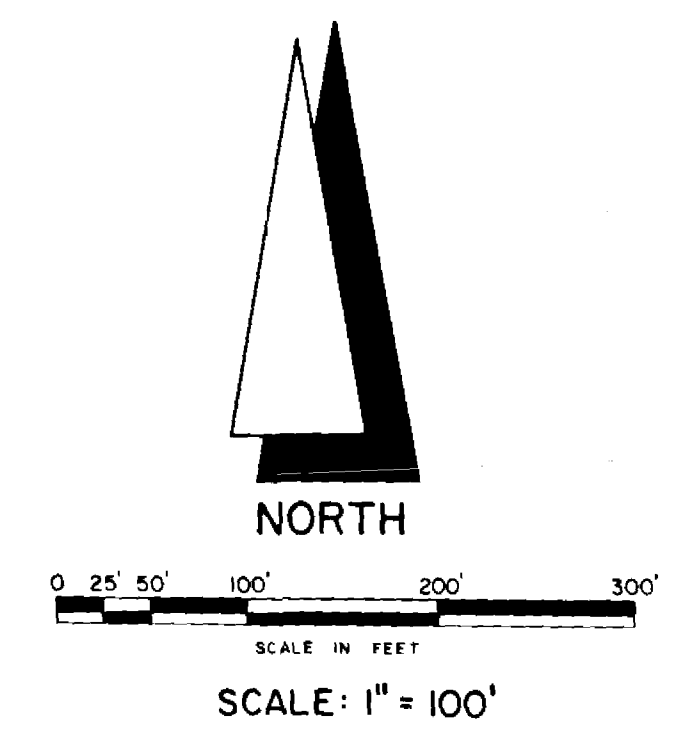


LOCATION MAP  
2 LOTS  
18.22 ± ACRES



UNPLATTED

UNPLATTED



STATE OF OKLAHOMA  
WAGONER COUNTY  
RECORDED  
1992 OCT 14 AM 11:18

**ENGINEER**  
HAMMOND ENGINEERING CO.  
5157 EAST 51ST STREET  
SUITE 100  
TULSA, OKLAHOMA 74135-7402

**OWNER**  
AES MANUFACTURING SERVICES, INC.  
1876 NORTH 106TH EAST AVENUE  
TULSA, OKLAHOMA 74116

APPROVED 9-8-92 by the City Council of the City of Broken Arrow, Oklahoma.  
James C. Reynolds / Mayor  
Mary Sue Tedder / Attest: City Clerk

APPROVED 9-8-92 by the City Council of the City of Broken Arrow, Oklahoma.  
James C. Reynolds / Mayor  
Brenda Rinehart / Attest: City Clerk