



# OKLAHOMA TAX COMMISSION

ANNUAL  
REPORT  
OF THE

---

Fiscal Year Ended

---

June 30, 2013

---

---

---

---



**ANNUAL REPORT  
OF THE  
OKLAHOMA TAX COMMISSION**



**FISCAL YEAR  
ENDED JUNE 30, 2013**



Information prepared by the Accounting Division of the Management Services Division and the Research Office of the Tax Policy Division. Designed by the Communications Division.

This publication was issued under the authority of the Oklahoma Tax Commission. Copies have not been printed but are available at [www.tax.ok.gov](http://www.tax.ok.gov).



## OKLAHOMA TAX COMMISSION STATE OF OKLAHOMA

**THOMAS E. KEMP**, Chairman  
**JERRY JOHNSON**, Vice-Chairman  
**DAWN CASH**, Secretary-Member

2501 NORTH LINCOLN BLVD.  
OKLAHOMA CITY, OK 73194-0001

To the Honorable Mary Fallin, Governor,  
and Members of the Oklahoma Legislature:

On behalf of the Oklahoma Tax Commission, we are pleased to submit to you and the legislative members our annual report for the fiscal year ended June 30, 2013.

Total collections from **all** sources administered by the Commission during Fiscal Year 2013 totaled \$11,227,687,105.33. Gross collections from state-levied taxes, licenses and fees, **exclusive** of city/county sales and use taxes and county lodging taxes, amounted to \$9,175,334,978.88.

We remain steadfast to our mission of serving the people of Oklahoma by promoting tax compliance through quality service and fair administration.

Respectfully submitted,

  
\_\_\_\_\_  
Thomas E. Kemp, Jr., Chairman

  
\_\_\_\_\_  
Jerry Johnson, Vice-Chairman

  
\_\_\_\_\_  
Dawn Cash, Secretary-Member



# TABLE OF CONTENTS

---

Background Summary of the Oklahoma Tax Commission .....	2
Oklahoma Tax Commission Organizational Chart.....	3
Review of 2012-2013 Taxes and Collections.....	4
Comparative Statement of all Tax Collections of the Past Two Years .....	12
Apportionment of Statutory Revenues.....	16
Fiscal Year 2012-2013 Revenue and Apportionment .....	22
The Oklahoma Tax Dollar Fiscal Year 2012-2013 .....	42
Collections from Major Tax Sources from Fiscal Year 1980 through Fiscal Year 2013.....	44



# BACKGROUND SUMMARY OF THE OKLAHOMA TAX COMMISSION

---

The Oklahoma Tax Commission, from its inception in 1931, has been responsible for the collection and administration of various tax sources and the apportionment of these revenues to state funds which provide monies for education, transportation, recreation, social welfare, and the myriad of other services provided for the citizens of Oklahoma.

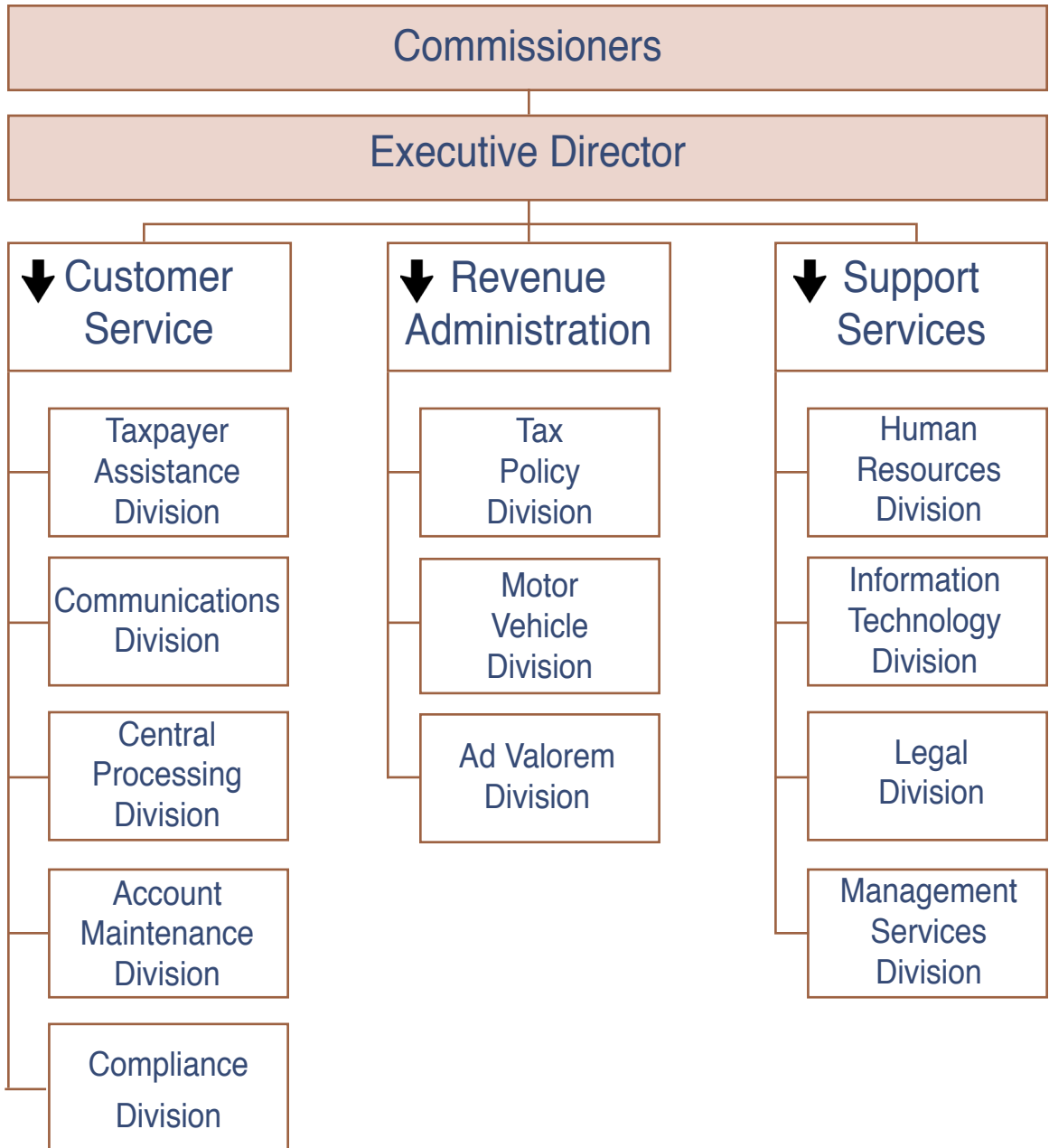
The Tax Commission is comprised of three members (Chairman, Vice-Chairman, and Secretary-Member) who are appointed by the Governor with the advice and consent of the State Senate and serve terms of six years each.

It is the Commission's responsibility to supervise the administration and enforcement of state tax laws and the collection of a majority of all state-levied taxes and fees.

The Commission directs the collection and distribution of the tax and license sources under its administration and, by statute, is responsible for apportioning such tax revenues to the various state funds. In addition, the Oklahoma Tax Commission allocates directly to local units of government certain state-collected levies earmarked to counties, school districts and municipalities. On a contract basis with individual municipalities and counties, the Tax Commission is involved with the administration, collection and distribution of city/county sales and use taxes and county lodging taxes.



# OKLAHOMA TAX COMMISSION ORGANIZATIONAL CHART





# REVIEW OF 2012-2013 TAXES AND COLLECTIONS

<b>Income Tax Gross Collections</b>	<b>\$ 4,123,861,207.68</b>
-------------------------------------	----------------------------

<b>Refunded</b>	<b>\$ 622,100,760.77</b>
-----------------	--------------------------

<b>Net Income Tax Revenue</b>	<b>\$ 3,501,760,446.91</b>
-------------------------------	----------------------------

- **Individual Income Tax Net** **\$ 2,919,028,845.65**

- **Single:** From 1/2 of 1% of the first \$1,000 of taxable income and graduated up to \$246.50 plus 5.25% of income over \$8,700 for tax year 2012 and 2013.

- **Married:** From 1/2 of 1% of the first \$2,000 of taxable income and graduated up to \$395.00 plus 5.25% of income over \$15,000 for tax year 2012 and 2013.

Taxpayers whose filing status is Head of Household use Married rates.

The starting point to arrive at Oklahoma Taxable Income is Federal Adjusted Gross Income with certain specific exemptions.

Personal exemption: \$1,000 each.

	<u>Tax Year</u>	
Standard deduction:	<u>2012</u>	<u>2013</u>
Single	\$5,950	\$6,100
Married	11,900	12,200
Head of Household	8,700	8,950

- **Corporation Income Tax Net** **\$ 582,731,601.26**

Flat Rate: 6% of Oklahoma Taxable Income.





# REVIEW OF 2012-2013 TAXES AND COLLECTIONS, CONTINUED

<b>Gross Production Taxes</b>	<b>\$ 715,072,537.36</b>
-------------------------------	--------------------------

• <b>Severance Tax</b>	<b>\$ 702,508,729.05</b>
------------------------	--------------------------

The severance tax is a variable rate tax based on the average monthly price per barrel of oil or average monthly price per mcf of gas as determined by the Oklahoma Tax Commission. For FY 2013, the rate for oil and gas was constant at 7%.

• <b>Petroleum Excise Tax</b>	<b>\$ 12,563,808.31</b>
-------------------------------	-------------------------

Oil and Gas Excise Tax: 0.095 of 1% of gross value.

<b>Sales and Use Taxes</b>	<b>\$ 2,541,392,779.32</b>
----------------------------	----------------------------

• <b>State Sales Tax</b>	<b>\$ 2,309,126,244.67</b>
--------------------------	----------------------------

Rate: 4.5% on the sale or rental of tangible personal property and from the furnishing of specific services.

• <b>State Use Tax</b>	<b>\$ 232,266,534.65</b>
------------------------	--------------------------

Rate: 4.5% on sales price of tangible personal property purchased out-of-state for use or consumption in Oklahoma.

**City/County Sales and Use Tax and County Lodging Tax**  
(Not included above)

Collected by the Tax Commission during the fiscal year were city sales taxes totaling **\$1,557,122,108.99** and county sales taxes totaling **\$339,011,262.90**. City use tax collections amounted to **\$123,702,533.09** and county use tax totaled **\$30,865,069.82**. County lodging taxes amounted to **\$1,651,151.65**.



# REVIEW OF 2012-2013 TAXES AND COLLECTIONS, CONTINUED

<b>Vehicle Taxes and Licenses</b>	<b>\$</b>	<b>681,413,069.43</b>
-----------------------------------	-----------	-----------------------

• Aircraft Excise Tax	\$	4,852,321.80
• Aircraft License Fees		408,977.18
• Drivers License Reinstatement Fees		3,000,000.00
• Motor License Agent Remittances		648,438,634.36
• Motor Vehicle Rental Tax		10,069,382.96
• Overweight Truck Permit		14,592,000.00
• Vehicle Inventory Stamps		51,753.13

<b>Motor Fuel Taxes</b>	<b>\$</b>	<b>444,068,747.69</b>
-------------------------	-----------	-----------------------

• Gasoline Tax	\$	298,168,227.27
----------------	----	----------------

Rate: 16 cents per gallon on all gasoline sold, withdrawn from storage for sale or other use, and any portion used in this state of gasoline imported in fuel tanks of vehicles used for commercial purposes.

• Compressed Natural Gas Tax	\$	339,741.13
------------------------------	----	------------

Rate: 5 cents per gasoline gallon equivalent (gge) on compressed natural gas used or consumed as motor fuel in this state.

• Special Fuel Tax	\$	35,970.27
--------------------	----	-----------

• Diesel Tax	\$	113,310,385.10
--------------	----	----------------

Rate: 16 cents per gallon on special fuels and 13 cents per gallon on diesel used to propel vehicles on the highway, and any portion used in this state of such fuels imported in fuel tanks of vehicles used commercially.

• Special Fuel Decals	\$	88,049.00
-----------------------	----	-----------

Rate: \$50 per year in lieu of use tax on L.P.G. or natural gas used to propel automobiles, vans and pickup trucks not exceeding 1 ton capacity; \$100 for same using compressed or liquefied natural gas, methanol, or "M-85"; and \$150 for those exceeding 1 ton capacity using L.P.G., liquefied natural gas, methanol or "M-85".

• Motor Fuel Special Assessment Fee	\$	32,126,374.92
-------------------------------------	----	---------------

Rate: 1 cent per gallon on gasoline and diesel fuels. Monies used for the removal and/or replacement of leaking underground storage tanks, with excess amounts being used for highway and road construction.



# REVIEW OF 2012-2013 TAXES AND COLLECTIONS, CONTINUED

<b>Cigarette and Tobacco Taxes and Licenses</b>	<b>\$ 282,991,111.90</b>
---	--------------------------

• <b>Cigarette Tax</b>	<b>\$ 187,616,949.37</b>
------------------------	--------------------------

Cigarettes: \$1.03 per pack of 20.

• <b>Cigarette License</b>	<b>\$ 87,568.98</b>
----------------------------	---------------------

Retail: \$ 30 for a 3 year permit.

Wholesale: \$250 for a 1 year permit.

Distributing Agent: \$ 100 for a 1 year permit.

• <b>Tobacco Products Tax</b>	<b>\$ 40,536,720.07</b>
-------------------------------	-------------------------

Little Cigars (cigarette size): 72 cents per pack of 20 (\$0.036 each).

Large Cigars (3 lbs. Per M or more): 12 cents each.

Smoking Tobacco: 80% of factory list price.

Chewing Tobacco: 60% of factory list price.

• <b>Tobacco License</b>	<b>\$ 77,070.00</b>
--------------------------	---------------------

Retail: \$ 30 for a 3 year permit.

Wholesale: \$250 for a 1 year permit.

Distributing Agent: \$ 100 for a 1 year permit.

• <b>Tribal Cigarette/Tobacco Payments</b>	<b>\$ 30,781,871.14</b>
--	-------------------------

Non-compacting tribally owned/licensed stores: 100% of cigarette/tobacco excise taxes imposed by the State.

Compacting tribally owned/licensed stores: Excise tax rates as provided by each Tribal/State compact.

• <b>State/Tribal Compact Stamps</b>	<b>\$ 23,890,932.34</b>
--------------------------------------	-------------------------

Roll: \$0.66500 per stamp.

Sheet: \$0.83175 per stamp.



# REVIEW OF 2012-2013 TAXES AND COLLECTIONS, CONTINUED

<b>Beverage Taxes and Licenses</b>	<b>\$ 107,104,963.24</b>
------------------------------------	--------------------------

- **Alcoholic Beverage Tax** **\$ 37,430,642.77**

Distilled spirits:	\$ 1.47 per liter.
Wine:	\$ 0.19 per liter.
Sparkling wines:	\$ 0.55 per liter.
Strong beer:	\$12.50 per barrel.

- **Beverage Tax** **\$ 24,438,074.95**

Beer 3.2% or less: \$11.25 per 31-gallon barrel.

- **Beverage License (3.2% Beer)** **\$ 1,233,832.15**

Retailer Manufacturer (Brew Pub): \$650  
Manufacturer: \$500  
Wholesale: \$250

Retail (3 year permit):  
On-premise draught: \$500  
On-premise cans and bottles only: \$350  
Off-premise cans and bottles only: \$230

- **Mixed Beverage Gross Receipts Tax** **\$ 44,002,413.37**

A tax at the rate of 13.5% is levied on the total gross receipts from the sale, preparation or service of mixed beverages; ice or nonalcoholic beverages to be mixed with alcoholic beverages; admission charges to mixed beverage establishments; and on the total retail value of complimentary or discounted mixed beverages.



# REVIEW OF 2012-2013 TAXES AND COLLECTIONS, CONTINUED

<b>Estate Tax</b>	\$	<b>933,054.16</b>
-------------------	----	-------------------

Effective for deaths on or after January 1, 2010, the Oklahoma Estate Tax is repealed.

<b>Business Activity Tax, Franchise Tax, Registered Agent Fees</b>	\$	<b>44,663,370.76</b>
--	----	----------------------

• <b>Business Activity Tax</b>	\$	<b>44,194,482.10</b>
--------------------------------	----	----------------------

Rate: Corporations, associations, joint-stock companies and business trusts doing business in Oklahoma are required to pay BAT in an amount equal to their franchise tax paid for tax year 2010 or \$25 whichever is greater. All others doing business in Oklahoma must pay \$25. BAT expired at the end of 2012 with taxes on business activity during 2012 remitted in 2013.

• <b>Franchise Tax</b>	\$	<b>459,493.66</b>
------------------------	----	-------------------

Effective July 1, 2010 through June 30, 2013, there was a moratorium on Franchise Tax. In lieu of Franchise Tax, entities paid the Business Activity Tax.

Oklahoma levies an annual franchise tax on all corporations that do business in the State. Corporations are taxed \$1.25 for each \$1,000 of capital invested or used in Oklahoma.

• <b>Registered Agent Fees</b>	\$	<b>9,395.00</b>
--------------------------------	----	-----------------

Foreign corporations are additionally assessed \$100 per year, payable to the Oklahoma Tax Commission, for the Secretary of State acting as their registered agent.

<b>Electric Cooperative Tax and License</b>	\$	<b>37,128,471.43</b>
---	----	----------------------

• <b>Tax:</b> 2% of gross receipts from the sale of electric service.	\$	<b>37,123,381.85</b>
---	----	----------------------

• <b>License:</b> \$1.00 for each 100 customers or fraction thereof.	\$	<b>5,089.58</b>
--	----	-----------------

<b>Realty Transfer Tax</b>	\$	<b>15,010,736.41</b>
----------------------------	----	----------------------

• **Documentary Stamps:** \$0.75 for each \$500 or fraction thereof in excess of \$100 of the value of real estate transferred by a proper conveyance instrument.



# REVIEW OF 2012-2013 TAXES AND COLLECTIONS, CONTINUED

<b>Miscellaneous Taxes, Fees, Licenses and Special Accounts.....\$</b>	<b>181,694,929.50</b>
--	-----------------------

• Admission Fees .....	\$ 0.00
• Bingo Tax .....	123,724.59
• Charity Games Tax .....	35,264.79
• Coin-Operated Device Decals & Distributor Permits .....	4,138,882.56
• Computer Enhancement Fund.....	27,236,782.96
• Controlled Dangerous Substance Tax Stamps .....	240.00
• County Clerk Fees .....	64,892.26
• Driving Record Fee.....	521,570.96
• Energy Resources Assessment.....	15,726,665.65
• Farm Implement Tax Stamps.....	10,603.05
• Fireworks Licenses .....	1,720.00
• Freight Car Tax .....	728,534.59
• Group Self-Insurance Premium Tax.....	2,763.16
• Horse Track Gaming.....	20,590,635.88
• Income Tax Check-Offs .....	178,491.00
• Individual Self-Insurance Premium Tax .....	7,378.49
• Intercept Account .....	27,857,832.53
• Marginal Well Fee .....	682,561.05
• Multiple Injury Trust Fund .....	35,651,505.20
• Occupational Health and Safety Tax.....	2,681,501.34
• Organ Donor Program .....	152,450.13
• OTC Reimbursements .....	6,247,282.43
• Pari-Mutuel Tax.....	1,183,821.35



# REVIEW OF 2012-2013 TAXES AND COLLECTIONS, CONTINUED

## Miscellaneous Taxes, Fees, Licenses and Special Accounts • Continued

• Pick Six/Seven Wager Tax.....	\$	7,843.33
• Prepaid Wireless Fee .....		2,656,101.39
• Printing and Revolving Fund.....		1,063,048.54
• Public Service Penalties .....		1,092.00
• Sales Tax Permits .....		641,418.36
• Sales Tax Vendors List .....		1,050.00
• Service Charge Fee.....		49,919.97
• Tax Security Fund .....		197,770.94
• Telephone Surcharge.....		712,765.14
• Tire Recycling Fee .....		12,588,057.46
• Tourism Gross Receipts Tax .....		3,282.12
• Transport and Reclaimer License Fees.....		58,194.69
• Unapplied Payments.....		48,792.79
• Unclassified Receipts .....		142,920.70
• Wire Transmitter Fee .....		9,764,828.02
• Workers Compensation Insurance Premium Tax .....		9,932,740.08

**Grand Total Collections\* .....\$9,175,334,978.88**

\* City/county sales and use taxes and county lodging taxes are not included.



# COMPARATIVE STATEMENT OF ALL TAX COLLECTIONS OF THE PAST TWO YEARS

	Fiscal Year 2012-2013	Fiscal Year 2011-2012
Admission Fees .....	\$ 0.00	\$ 0.00
Aircraft Excise Tax .....	4,852,321.80	5,708,236.96
Aircraft License Fees.....	408,977.18	369,785.11
Alcoholic Beverage Tax .....	37,430,642.77	35,776,423.62
Beverage License .....	1,233,832.15	928,037.38
Beverage Tax.....	24,438,074.95	25,146,006.05
Bingo Tax.....	123,724.59	124,577.64
Business Activity Tax .....	44,194,482.10	50,526,010.74
Charity Games Tax .....	35,264.79	33,451.75
Cigarette License.....	87,568.98	66,326.02
Cigarette Tax .....	187,616,949.37	202,315,154.52
Coin-Operated Device Decals/Distributor Permits ..	4,138,882.56	6,015,204.46
Compressed Natural Gas .....	339,741.13	90,625.77
Computer Enhancement Fund .....	27,236,782.96	20,341,535.62
Controlled Dangerous Substance Tax Stamps.....	240.00	230.00
County Clerk Fees.....	64,892.26	64,117.51
Diesel Fuel Tax .....	113,310,385.10	117,826,874.18
Documentary Stamp Tax .....	15,010,736.41	12,571,535.15
Drivers License Reinstatement Fee .....	3,000,000.00	3,000,000.00
Drivers Record Fee .....	521,570.96	557,839.20
Electric Co-op Tax .....	37,123,381.85	35,608,935.43
Energy Resources Assessment.....	15,726,665.65	16,589,093.13
Estate Tax.....	933,054.16	486,372.27
Farm Implement Tax Stamps.....	10,603.05	8,636.28





# COMPARATIVE STATEMENT OF ALL TAX COLLECTIONS OF THE PAST TWO YEARS, CONTINUED

	Fiscal Year 2012-2013	Fiscal Year 2011-2012
Fireworks License.....	\$ 1,720.00	\$ 47,600.00
Franchise Tax .....	459,493.66	1,975,309.22
Freight Car Tax .....	728,534.59	666,387.67
Gasoline Tax.....	298,168,227.27	301,269,750.04
Group Self-Insurance Premium Tax .....	2,763.16	7,324.67
Horse Track Gaming.....	20,590,635.88	18,764,232.11
Income Tax - Individual.....	3,494,967,724.67	3,307,349,252.19
Income Tax - Corporate .....	628,893,483.01	548,478,149.99
Income Tax - Check-Offs .....	178,491.00	262,573.47
Individual Self-Insurance Premium Tax .....	7,378.49	14,014.34
Marginal Well Fee.....	682,561.05	617,147.86
Mixed Beverage Gross Receipts Tax .....	44,002,413.37	39,727,338.88
Motor Fuel Special Assessment Fee .....	32,126,374.92	33,091,358.34
Motor License Agent Remittances.....	648,438,634.36	663,045,556.34
Motor Vehicle Rental Tax.....	10,069,382.96	9,775,307.83
Occupational Health & Safety Tax .....	2,681,501.34	3,014,727.76
Oklahoma Tax Commission Reimbursements.....	6,247,282.43	11,675,718.75
Organ Donor Program .....	152,450.13	143,874.18
Overweight Truck Permits .....	14,592,000.00	14,592,000.00
Pari-Mutuel Tax.....	1,183,821.35	1,378,977.62
Petroleum Excise Tax.....	12,563,808.31	14,022,823.94
Pick Six/Seven Wager .....	7,843.33	8,582.11
Prepaid Wireless Fee .....	2,656,101.39	2,370,491.04
Registered Agents Fees .....	9,395.00	14,815.00



# COMPARATIVE STATEMENT OF ALL TAX COLLECTIONS OF THE PAST TWO YEARS, CONTINUED

	Fiscal Year 2012-2013	Fiscal Year 2011-2012
Rural Electric Co-op License .....	\$ 5,089.58	\$ 4,627.10
Sales Tax .....	2,309,126,244.67	2,203,993,461.60
Sales Tax Permits .....	641,418.36	642,668.91
Sales Tax Vendors List .....	1,050.00	1,050.00
Service Charge Fee.....	49,919.97	52,829.66
Severance Tax.....	702,508,729.05	882,660,378.39
Special Fuel Decals.....	88,049.00	86,975.50
Special Fuel Tax .....	35,970.27	36,133.27
State/Tribal Compact Stamps.....	23,890,932.34	19,119,212.87
Telephone Surcharge .....	712,765.14	710,678.51
Tire Recycling Fee.....	12,588,057.46	11,641,727.02
Tobacco Products License.....	77,070.00	59,240.00
Tobacco Products Tax .....	40,536,720.07	38,236,883.50
Tourism Gross Receipts Tax.....	3,282.12	1,804.45
Transport & Reclaimer Permits .....	58,194.69	51,952.75
Tribal Cigarette/Tobacco Payments.....	30,781,871.14	33,872,985.55
Use Tax.....	232,266,534.65	223,644,238.63
Vehicle Revenue Tax Stamps.....	51,753.13	43,930.53
Wire Transmitter Fee .....	9,764,828.02	8,913,420.69
Workers Comp. Insurance Premium Tax.....	9,932,740.08	8,696,067.70
<b>Total Tax, License, Fee and Permit Collections</b>	<b>\$ 9,110,372,016.18</b>	<b>\$ 8,938,938,588.77</b>



# COMPARATIVE STATEMENT OF ALL TAX COLLECTIONS OF THE PAST TWO YEARS, CONTINUED

	Fiscal Year 2012-2013	Fiscal Year 2011-2012
<b>Miscellaneous Accounts</b>		
Intercept Account.....	\$ 27,857,832.53	\$ 31,006,419.17
Multiple Injury Trust Fund .....	35,651,505.20	22,728,962.18
Printing & Revolving Fund.....	1,063,048.54	1,083,297.26
Public Service Penalties .....	1,092.00	1,126.00
Tax Security Fund.....	197,770.94	515,543.46
Unapplied Payments .....	48,792.79	351,270.83
Unclassified Receipts.....	142,920.70	3,737,767.46
<b>Total Miscellaneous Collections .....</b>	<b>\$ 64,962,962.70</b>	<b>\$ 59,424,386.36</b>
<b>Grand Total Collections* .....</b>		
	<b>\$ 9,175,334,978.88</b>	<b>\$ 8,998,362,975.13</b>

\* City/county sales and use taxes and county lodging taxes are not included.



# APPORTIONMENT OF STATUTORY REVENUES

	Fiscal Year 2012-2013	Fiscal Year 2011-2012
Ad Valorem Reimbursement Fund .....	\$ 34,117,320.31	\$ 31,453,136.14
Adoption Creates Families .....	1,200.00	1,225.00
Ag-N-Class Fund .....	5,688.00	6,264.00
Animal Friendly Revolving Fund.....	7,040.00	7,580.00
Attorney General Revolving Fund .....	220.00	200.00
Belle Maxine Hilliard Breast & Cervical Cancer Fund	940,983.81	973,008.95
Blind and Deaf Fund.....	0.00	490.00
Boy Scouts of America .....	880.00	940.00
Breast Cancer Fund .....	29,255.00	42,436.00
Buffalo Soldier License Plates.....	3,440.00	N.A.
Cancer Center Service Revolving Fund .....	6,603,659.07	6,828,836.57
Capital Improvement Program.....	100.00	868.38
Certified 911 Entities.....	2,601,229.58	2,321,235.55
Chief Medical Examiner Revolving Fund.....	0.00	1,000,000.00
Child Abuse Prevention Fund .....	1,280.00	1,560.00
Children’s Hospital Safe Kids Fund .....	0.00	0.00
Choose Life Assistance Revolving Fund .....	6,620.00	7,300.00
Circuit Engineering District Revolving Fund .....	3,759,042.61	4,463,612.89
Cities and Counties .....	24,187,662.42	26,072,934.27
Cities and Towns .....	37,762,552.32	36,621,644.34
Colleges and Universities .....	172,560.00	185,680.00
Color Oklahoma Revolving Fund.....	5,060.00	6,400.00
Commission on Marginally Producing Wells Fund ..	607,106.89	598,633.41
Common Education Technical Fund.....	47,372,297.60	47,372,297.71
Community-Based Substance Abuse Rev. Fund.....	611,600.00	499,400.00
Community Water Infra-Structure Dev. Rev. Fund ..	2,627,702.40	2,627,702.29
Computer Enhancement Fund .....	27,236,782.96	20,341,535.62



# APPORTIONMENT OF STATUTORY REVENUES, CONTINUED

	Fiscal Year 2012-2013	Fiscal Year 2011-2012
Conservation Commission Infra-Structure Revolving Fund.....	\$ 2,627,702.40	\$ 2,627,702.29
Corporation Commission Fund.....	1,000,000.00	1,000,000.00
Corporation Commission Plugging Fund.....	1,309,752.56	1,176,088.48
Corporation Commission Storage Tank Regulation Revolving Fund.....	0.00	0.00
Counties for Ad Valorem Distribution.....	3,125.00	0.00
Counties for Bridge & Road Improvement Fund.....	24,556,139.05	29,469,291.00
Counties for County Clerks.....	54,652.00	56,186.00
Counties for County Government.....	5,471,223.87	5,307,797.10
Counties for Roads.....	224,693,222.81	233,167,431.04
County Fair Enhancement Fund.....	0.00	56.00
County Improvement Road and Bridge Rev. Fund..	99,297,039.31	96,381,454.43
County Road Fund .....	17,075,040.15	16,567,078.24
County Road Improvement Revolving Fund.....	23,869,001.05	23,162,249.21
Court Appointed Special Advocates .....	12,876.00	25,458.00
Dept. of Commerce Revolving Fund .....	465.00	787.00
Dept. of Environmental Quality Revolving Fund.....	5,713,399.64	5,481,670.18
Dept. of Public Safety Revolving Fund.....	716,154.96	730,890.59
DPS Patrol Academy .....	0.00	5,000,000.00
DPS Patrol Vehicle Fund.....	850,000.00	850,000.00
DPS Imaging System Revolving Fund .....	5,386,677.25	5,158,642.00
Drug Abuse Education Revolving Fund.....	240.00	230.00
Drug Money Laundering & Wire Transm. Rev. Fund	9,764,828.02	8,913,420.69
Eastern Red Cedar Revolving Fund.....	3,381.00	2,431.00
Education Reform Revolving Fund.....	614,835,113.68	569,421,274.78
EMT Death Benefit Revolving Fund.....	3,760.00	3,900.00
Energy Resources Revolving Fund.....	15,702,665.65	16,565,093.13



# APPORTIONMENT OF STATUTORY REVENUES, CONTINUED

	Fiscal Year 2012-2013	Fiscal Year 2011-2012
Environmental Education Revolving Fund.....	\$ 9,552.00	\$ 10,272.00
Firemans Museum & Building Memorial Fund.....	63,860.00	66,300.00
4-H Club .....	400.00	480.00
Folds of Honor Scholarship Program .....	6,263.00	10,674.00
General Revenue Fund .....	5,313,905,939.38	5,290,675,541.31
Global War on Terrorism.....	1,500.00	1,560.00
Health Employee & Economy Improvement.....	47,146,794.39	48,754,240.63
Heartland Scholarship Fund.....	860.00	940.00
High Priority State Bridge Revolving Fund .....	5,932,688.65	6,036,200.98
Higher Education Capital Fund.....	47,372,297.60	47,372,297.71
Higher Education Revolving Fund.....	219.65	271.40
Historical Greenwood Dist. Music Festival Fund .....	1,747.00	N.A.
Historical Society Revolving Fund.....	540.00	580.00
Indigent Health Care Revolving Fund.....	16,636.00	30,361.00
Individual Self-Insur. Guaranty Fund .....	0.00	0.00
Interstate Oil Compact Fund.....	850,240.66	972,845.62
Jr. Livestock Auction Scholarship Fund.....	0.00	132.00
Lions Club Service Foundation.....	180.00	190.00
March of Dimes .....	280.00	280.00
Mental Health and Substance Abuse Fund .....	5,659,646.47	5,852,978.34
Mental Retardation Revolving Fund .....	25,884.00	27,852.00
Motor Vehicle Drivers Education Fund .....	900,000.00	900,000.00
Motorcycle Safety & Education Revolving Fund.....	370,839.00	372,672.00
Multiple Injury Trust Fund .....	32,251,759.91	20,173,363.76
Multiple Sclerosis Society Fund.....	5,529.00	8,060.00
NASCAR Racing Plates .....	1,851.50	2,060.80
National Stock Car Association .....	161.00	179.20



# APPORTIONMENT OF STATUTORY REVENUES, CONTINUED

	Fiscal Year 2012-2013	Fiscal Year 2011-2012
OKC Bombing Memorial Fund.....	\$ 0.00	\$ 0.00
Okla. Dept. of Career & Tech. Educ. Ag. Rev. Fund - FFA	540.00	580.00
Oklahoma Aeronautics Revolving Fund .....	5,357,972.86	6,148,578.48
Oklahoma Building Bonds Sinking Fund .....	41,893,485.06	45,161,477.49
Oklahoma Common Schools.....	0.00	117.00
Oklahoma Emergency Response System Stabilization and Improvement Rev. Fund.....	2,095,267.14	1,400,394.97
Oklahoma Film Enhancement Rebate Prog. Revolving Fund.....	5,000,000.00	7,220,523.82
Oklahoma Health Care Authority .....	56,383,064.33	58,305,086.63
Oklahoma Historical Society Capital Rev. Fund .....	1,497,999.40	1,438,375.12
Oklahoma Honor Flights.....	8,036.00	6,479.00
Oklahoma Law Enforcement Retirement Fund .....	8,591,523.39	8,798,629.62
Oklahoma Leukemia and Lymphoma Rev. Fund.....	7,762.00	15,120.00
Oklahoma Lupus Revolving Fund .....	4,158.00	N.A.
Oklahoma Pet Over-Population Fund.....	18,496.00	32,509.00
Oklahoma Road and Highway Maintenance .....	0.00	1,234.00
Oklahoma Silver Haired Legislature and Alumni Association Program.....	56.00	1,419.00
Oklahoma Sports Eye Safety Program.....	1,051.00	N.A.
Oklahoma Student Aid Revolving Fund.....	47,372,297.60	47,372,297.71
Oklahoma Tax Commission Fund.....	23,834,983.27 (a)	23,286,590.14 (b)
Oklahoma Tax Commission Reimbursement Fund	10,013,845.87	15,150,313.56
Oklahoma Teachers Retirement Fund.....	297,100,986.79	278,912,380.44
Oklahoma Tourism & Passenger Rail Rev. Fund ....	2,850,000.00	2,850,000.00
Oklahoma Tourism Capital Improvement Rev. Fund	13,981,327.64	13,424,834.74
Oklahoma Tourism Revolving Fund.....	7,739,663.48	7,431,604.95
Oklahoma Viticulture and Enology Center Dev. ....	350,000.00	350,000.00



# APPORTIONMENT OF STATUTORY REVENUES, CONTINUED

	Fiscal Year 2012-2013	Fiscal Year 2011-2012
Organ Donor Revolving Fund .....	\$ 150,930.08	\$ 142,438.33
OSU Osteopathic Medicine Revolving Fund .....	6,603,659.07	6,828,836.57
Pancreatic Cancer Research Fund .....	2,540.00	2,920.00
Participating Tribes .....	19,480,785.92	19,870,844.19
Patriot License .....	9,060.00	9,260.00
Petroleum Storage Tank Indemnity Fund .....	20,454,824.98	21,674,699.92
Public Employees Safety Fund.....	1,275,000.00	1,275,000.00
Public School Classroom Support Fund.....	10,629.00	N.A.
Public Transit Revolving Fund .....	3,850,000.00	3,850,000.00
Qualified Aircraft Mfr. Ad Valorem Rebate .....	0.00	0.00
Quarter Horse Revolving Fund.....	2,520.00	2,640.00
Railroad Maintenance Revolving Fund.....	716,415.44	666,387.67
Rebuild Okla. Access & Driver Safety Fund .....	292,400,000.00	250,700,000.00
Returned to Counties - Admission Fees .....	0.00	0.00
Returned to Counties - Aircraft Mfg. Fees .....	0.00	250.00
School Districts.....	336,526,714.33	335,796,664.48
Special Occupational Health and Safety Fund .....	2,662,588.30	3,014,362.76
Special Prog. Assis. Rev. Fund Realtors License....	4,680.00	5,620.00
State Dept. of Education Disbursing Fund .....	0.00	37,600,000.00
State Dept. of Education Disbursing Fund .....	0.00	14,845,700.00
State Emergency Fund.....	0.00	34,145,706.00
State Highway Construction & Maintenance Fund..	3,123,679.15	2,079,421.18
State Transportation Fund .....	204,316,899.57	208,864,879.28
Support of Domestic Violence/Sexual Assault Services	6,084.00	N.A.
Support of Volunteer Fire Departments .....	9,854.00	N.A.
Support Oklahoma Medicaid Program .....	0.00	178.00
Support Oklahoma National Guard .....	10,322.00	23,490.00





# APPORTIONMENT OF STATUTORY REVENUES, CONTINUED

	Fiscal Year 2012-2013	Fiscal Year 2011-2012
Support Our Troops Supporters .....	\$ 300.00	\$ 325.00
Support Program for Regional Food Banks.....	21,882.00	44,837.00
Sustaining Oklahoma Energy Resources.....	54,822.21	N.A.
Telecommunications for Hearing Impaired Revolving Fund.....	712,694.06	708,700.46
Tobacco Prevention & Cessation Revolving Fund...	1,409,960.93	1,458,088.52
Tourism and Recreation Capital Expenditure Revolving Fund.....	2,627,702.40	2,627,702.29
Tourism Department Rev. Fund - Route 66 .....	4,100.00	4,480.00
Tourism Department Rev. Fund - State Parks .....	4,899.00	5,290.00
Trauma Care Assistance Revolving Fund .....	17,330,414.35	18,502,776.67
Tribal Trust Account 1695T.....	10,772,962.56	11,740,295.30
Tulsa Reconciliation Education & Scholarship Fund	0.00	0.00
Turnpike Authority Trust Fund .....	41,322,166.42	41,243,080.92
U.S. Olympic Committee .....	2,231.00	2,231.00
Urban Forest & Beauty Revolving Fund .....	4,180.00	4,160.00
Vocational-Technical Fund.....	637,719.65	637,771.40
Waste Tire Recycling Indemnity Fund .....	8,952,022.60	8,312,496.81
Weigh Station Improvement Revolving Fund .....	6,000,000.00	6,000,000.00
Wildlife Conservation Fund.....	187,149.76	192,136.03
Wildlife Diversity Fund .....	84,759.00	106,383.09
Workers Compensation Fraud Unit Fund .....	637,500.00	637,500.00
YMCA Youth and Government Program.....	2,814.00	4,630.00
<b>Total Apportionment.....</b>	<b>\$ 8,202,623,393.19</b>	<b>\$ 8,174,715,113.57</b>

(a) Includes \$20,445,852.01 apportioned to O.T.C. Fund from city/county sales/use and county lodging tax retention fees.

(b) Includes \$19,931,718.52 apportioned to O.T.C. Fund from city/county sales/use and county lodging tax retention fees.

N.A. = Not Applicable



# FISCAL YEAR 2012-2013

## REVENUE AND APPORTIONMENT

WHERE IT CAME FROM		WHERE IT WENT	
<b>Admission Fees</b> .....	\$ 0.00	Cities and Towns.....	\$ 0.00
		County Government.....	0.00
<b>Aircraft Excise Tax</b> .....	\$ 4,852,321.80	Oklahoma Aeronautics Revolving Fund .....	\$ 4,852,321.80
<b>Aircraft License</b> .....	\$ 408,977.18	Counties-Aircraft Mfg. Fees	\$ 0.00
Transfer .....	27,002.01	General Revenue Fund .....	12,957.88
		Oklahoma Aeronautics Revolving Fund.....	418,971.29
		Refunded .....	4,050.02
<b>Alcoholic Beverage Tax</b> .....	\$ 37,430,642.77	Cities and Towns.....	\$ 12,082,737.30
Cancelled Vouchers .....	18,051.32	General Revenue Fund .....	23,815,474.59
		Oklahoma Tax Comm. Fund ..	1,121,078.73
		Oklahoma Viticulture & Enology Center Dev. ....	350,000.00
		Refunded .....	79,403.47
<b>Beverage License</b> .....	\$ 1,233,832.15	Community-Based Substance Abuse Revolving Fund .....	\$ 611,600.00
Cancelled Vouchers .....	500.00	General Revenue Fund .....	613,332.87
		Refunded .....	9,399.28
<b>Beverage Tax</b> .....	\$ 24,438,074.95	General Revenue Fund .....	\$ 24,438,074.95
<b>Bingo Tax</b> .....	\$ 123,724.59	General Revenue Fund .....	\$ 123,724.59
<b>Business Activity Tax</b>		Ad Valorem Reimb. Fund.....	\$ 83,224.79
\$25 Pays .....	\$ 8,322,679.00	Education Reform Rev. Fund	694,094.78
Regular.....	\$ 35,871,803.10	General Revenue Fund .....	42,971,746.58
Cancelled Vouchers .....	500.00	Teachers Retirement Rev. Fund	416,123.95
		Refunded .....	29,792.00



# FISCAL YEAR 2012-2013

## REVENUE AND APPORTIONMENT, CONTINUED

### WHERE IT CAME FROM

**Charity Games Tax** .....\$ 35,264.79  
 Cancelled Vouchers ..... 5,028.08

**Cigarette License**.....\$ 87,568.98

**Cigarette Tax:**  
 Original Rate Collections..\$ 41,895,056.83  
 New Rate Collections .....\$ 145,721,892.54

### WHERE IT WENT

General Revenue Fund ..... \$ 40,292.87

Okla. Tax Commission  
 Reimbursement Fund..... \$ 87,568.98

Belle Maxine Hilliard Breast and  
 Cervical Cancer Fund..... \$ 641,152.30

Cancer Center Service  
 Revolving Fund ..... 4,502,637.56

Cities and Counties..... 21,012,308.60

Education Reform Rev. Fund 3,016,330.02

General Revenue Fund ..... 24,247,213.27

Health Employee and Economy  
 Improvement Fund ..... 32,145,043.51

Mental Health and Substance  
 Abuse Fund..... 3,861,485.28

Oklahoma Building Bonds  
 Sinking Fund ..... 41,893,485.06

Oklahoma Emergency Response  
 System Stabilization &  
 Improvement Revolving Fund 860,660.29

Oklahoma Health Care  
 Authority ..... 38,439,993.08

OSU Osteopathic Medicine  
 Revolving Fund ..... 4,502,637.56



# FISCAL YEAR 2012-2013

## REVENUE AND APPORTIONMENT, CONTINUED

### WHERE IT CAME FROM

### WHERE IT WENT

**Cigarette Tax - continued...**

Teachers Retirement Revolving Fund .....	1,457,164.25
Tobacco Prevention and Cessation Revolving Fund .....	961,728.40
Trauma Care Assistance Revolving Fund .....	10,068,071.65
Refunded .....	7,038.54

**Coin-Operated Device Decals and Distributor Permits ....** \$ 4,138,882.56

General Revenue Fund .....	\$ 4,137,982.56
Refunded .....	900.00

**Compressed Natural Gas....** \$ 339,741.13

Transfer..... \$ 339,741.13

**Computer Enhancement Fund.....** \$ 27,236,782.96

Computer Enhancement Fund .....

\$ 27,236,782.96
------------------

**Controlled Dangerous Substance Tax .....** \$ 240.00

Drug Abuse Education Revolving Fund .....

\$ 240.00
-----------

**County Clerk Fees .....** \$ 64,892.26  
 Balance, July 1, 2012 .....

11,249.60
-----------

Counties for County Clerks.. \$ 54,652.00  
 Reserve\* .....

6,195.52	
Transfer.....	15,294.34

**County Lodging Tax .....** \$ 1,651,151.65  
 Interest Earned .....

1,495.70
----------

#1695B to Counties .....

\$ 1,633,290.87	
Oklahoma Tax Comm. Fund ..	16,497.89
Interest to Counties.....	1,495.70
Refunded .....	1,362.89



# FISCAL YEAR 2012-2013

## REVENUE AND APPORTIONMENT, CONTINUED

### WHERE IT CAME FROM

**Diesel Fuel Excise Tax** .....\$ 113,310,385.10  
 Cancelled Vouchers ..... 297,401.48  
 Transfer ..... (2,000,000.00)

**Documentary Stamp Tax**.....\$ 15,010,736.41  
 Cancelled Vouchers ..... 2,599.03

**Driving Record Fee**.....\$ 521,570.96

**Electric Co-op Tax** .....\$ 37,123,381.85

**Energy Resources Assessment** ..... \$ 15,726,665.65

**Estate Tax**.....\$ 933,054.16  
 Cancelled Vouchers ..... 405.75

**Farm Implement Tax Stamps** \$ 10,603.05

**Fireworks License** .....\$ 1,720.00

**Franchise Tax**.....\$ 459,493.66  
 Cancelled Vouchers ..... 23,374.00

### WHERE IT WENT

Circuit Engineering Dist.  
 Revolving Fund \$ 481,114.35  
 Counties for Roads ..... 30,500,645.49  
 Counties for Bridge & Road  
 Improvement Fund..... 3,367,800.50  
 High Priority State Bridge  
 Revolving Fund ..... 1,393,226.99  
 Participating Tribes ..... 4,770,101.64  
 State Transportation Fund ..... 65,489,370.09  
 Refunded ..... 5,605,527.52

General Revenue Fund ..... \$ 15,007,667.79  
 Refunded ..... 5,667.65

General Revenue Fund ..... \$ 521,570.96

General Revenue Fund ..... \$ 1,856,169.19  
 School Districts ..... 35,267,212.66

Energy Resources Revolving  
 Fund.....\$ 15,702,665.65  
 Oklahoma Tax Comm. Fund ... 24,000.00

General Revenue Fund ..... \$ 873,331.75  
 Refunded ..... 60,128.16

General Revenue Fund ..... \$ 10,603.05

General Revenue Fund ..... \$ 1,720.00  
 Refunded ..... 500.00  
 Reserve\* ..... (500.00)

General Revenue Fund ..... \$ 429,990.39  
 Refunded ..... 52,877.27



# FISCAL YEAR 2012-2013

## REVENUE AND APPORTIONMENT, CONTINUED

### WHERE IT CAME FROM

**Freight Car Tax** .....\$ 728,534.59

**Gasoline Tax** .....\$ 298,168,227.27  
 Cancelled Vouchers..... 5,476.00  
 Transfer ..... 339,741.13

#### Group Self-Insurance

**Premium Tax** .....\$ 2,763.16  
 Balance, July 1, 2012 ..... 47,739.34

**Horsetrack Gaming** .....\$ 20,590,635.88

**Income Tax - Corporate**.....\$ 628,893,483.01

### WHERE IT WENT

Railroad Maint. Rev. Fund .... \$ 716,415.44  
 Refunded ..... 12,119.15

Circuit Engineering District  
 Revolving Fund..... \$ 1,167,689.21  
 Cities and Towns..... 5,237,840.38  
 Counties for Roads ..... 83,903,218.90  
 Counties for Bridge & Road  
 Improvement Fund..... 6,416,703.65  
 General Revenue Fund ..... 1,278,005.14  
 High Priority State Bridge  
 Revolving Fund ..... 4,539,461.66  
 Oklahoma Aero. Rev. Fund..... 86,679.77  
 Participating Tribes ..... 13,308,604.69  
 Public Transit Revolving Fund 850,000.00  
 State Transportation Fund .... 136,786,400.99  
 Tourism & Passenger Rail  
 Revolving Fund ..... 850,000.00  
 Turnpike Authority Trust Fund 41,322,166.42  
 Refunded ..... 2,766,673.59

Reserve\* ..... \$ 50,502.50

Education Reform Rev. Fund... \$ 18,119,759.58  
 General Revenue Fund ..... 2,470,876.30

Ad Valorem Reim. Fund..... \$ 5,827,610.62  
 Educ. Reform Revolving Fund 96,155,575.35  
 General Revenue Fund ..... 451,639,823.58  
 Teachers Retirement Fund.... 29,138,053.12  
 Refunded Net of Cancelled  
 Vouchers..... 46,132,420.34



# FISCAL YEAR 2012-2013

## REVENUE AND APPORTIONMENT, CONTINUED

### WHERE IT CAME FROM

<b>Income Tax - Individual</b> .....	\$3,494,967,724.67
Transfer .....	1,227.16

### WHERE IT WENT

Ad Valorem Reim. Fund.....	\$ 28,206,484.90
Education Reform Rev. Fund	235,242,083.62
General Revenue Fund .....	2,113,767,492.13
Oklahoma Film Enhancement Rebate Prog. Rev. Fund ....	5,000,000.00
Okla. Tourism & Passenger Rail Revolving Fund.....	2,000,000.00
Public Transit Rev. Fund .....	3,000,000.00
Qualified Aircraft Manufacturer Ad Valorem Rebate .....	0.00
Rebuild Okla. Access & Driver Safety Fund.....	292,400,000.00
Teachers Retirement Fund.....	141,032,424.23
Refunded Net of Cancelled Vouchers.....	567,769,334.40
Quality Jobs Program Incentive Leverage Funds	13,981,203.41
Transfer to 1695Q.....	78,931,415.86
Transfer to 1695W .....	13,635,110.28
Reserve* .....	3,403.00

<b>Income Tax Check-Offs</b> .....	\$ 178,491.00
Balance, July 1, 2012 .....	(36.00)

Blind & Deaf Fund.....	\$ 0.00
Bombing Memorial Fund.....	0.00
Breast Cancer Fund.....	17,775.00
Capital Improvement Program	100.00
County Fair Enhancement Fund..	0.00
Court Appointed Special Advocates	12,876.00
Dept. of Commerce Rev. Fund	5.00
Eastern Red Cedar Rev. Fund	3,381.00
Folds of Honor Scholarship Prog.	6,263.00
Historic Greenwood District Music Festival Fund .....	1,747.00
Indigent Health Care .....	16,636.00



# FISCAL YEAR 2012-2013

## REVENUE AND APPORTIONMENT, CONTINUED

WHERE IT CAME FROM	WHERE IT WENT																																																						
<b>Income Tax Check-Offs - continued...</b>	<table style="width: 100%; border-collapse: collapse;"> <tr> <td style="padding: 2px 5px;">Jr. Livestock Auction</td> <td style="text-align: right; padding: 2px 5px;"></td> </tr> <tr> <td style="padding: 2px 5px;">    Scholarship Fund .....</td> <td style="text-align: right; padding: 2px 5px;">0.00</td> </tr> <tr> <td style="padding: 2px 5px;">Multiple Sclerosis Society Fund</td> <td style="text-align: right; padding: 2px 5px;">5,529.00</td> </tr> <tr> <td style="padding: 2px 5px;">Oklahoma Common Schools ..</td> <td style="text-align: right; padding: 2px 5px;">0.00</td> </tr> <tr> <td style="padding: 2px 5px;">Okla. Honor Flights .....</td> <td style="text-align: right; padding: 2px 5px;">8,036.00</td> </tr> <tr> <td style="padding: 2px 5px;">Okla. Leukemia &amp; Lymphoma</td> <td style="text-align: right; padding: 2px 5px;"></td> </tr> <tr> <td style="padding: 2px 5px;">    Revolving Fund .....</td> <td style="text-align: right; padding: 2px 5px;">7,762.00</td> </tr> <tr> <td style="padding: 2px 5px;">Okla. Lupus Revolving Fund...</td> <td style="text-align: right; padding: 2px 5px;">4,158.00</td> </tr> <tr> <td style="padding: 2px 5px;">Okla. Pet Overpopulation Fund..</td> <td style="text-align: right; padding: 2px 5px;">14,636.00</td> </tr> <tr> <td style="padding: 2px 5px;">Okla. Road &amp; Highway</td> <td style="text-align: right; padding: 2px 5px;"></td> </tr> <tr> <td style="padding: 2px 5px;">    Maintenance Fund .....</td> <td style="text-align: right; padding: 2px 5px;">0.00</td> </tr> <tr> <td style="padding: 2px 5px;">Okla. Silver-Haired Legislature</td> <td style="text-align: right; padding: 2px 5px;"></td> </tr> <tr> <td style="padding: 2px 5px;">    &amp; Alumni Assoc. Program ...</td> <td style="text-align: right; padding: 2px 5px;">56.00</td> </tr> <tr> <td style="padding: 2px 5px;">Okla. Sports Eye Safety Program</td> <td style="text-align: right; padding: 2px 5px;">1,051.00</td> </tr> <tr> <td style="padding: 2px 5px;">Public School Classroom</td> <td style="text-align: right; padding: 2px 5px;"></td> </tr> <tr> <td style="padding: 2px 5px;">    Support Fund .....</td> <td style="text-align: right; padding: 2px 5px;">10,629.00</td> </tr> <tr> <td style="padding: 2px 5px;">Support of Domestic Violence/</td> <td style="text-align: right; padding: 2px 5px;"></td> </tr> <tr> <td style="padding: 2px 5px;">    Sexual Assault Services.....</td> <td style="text-align: right; padding: 2px 5px;">6,084.00</td> </tr> <tr> <td style="padding: 2px 5px;">Support of Volunteer Fire Depts</td> <td style="text-align: right; padding: 2px 5px;">9,854.00</td> </tr> <tr> <td style="padding: 2px 5px;">Support Okla. Medicaid Program..</td> <td style="text-align: right; padding: 2px 5px;">0.00</td> </tr> <tr> <td style="padding: 2px 5px;">Support Okla. Nat'l. Guard.....</td> <td style="text-align: right; padding: 2px 5px;">10,322.00</td> </tr> <tr> <td style="padding: 2px 5px;">Support Program for Regional</td> <td style="text-align: right; padding: 2px 5px;"></td> </tr> <tr> <td style="padding: 2px 5px;">    Food Banks .....</td> <td style="text-align: right; padding: 2px 5px;">21,882.00</td> </tr> <tr> <td style="padding: 2px 5px;">Tulsa Reconciliation Educ. &amp;</td> <td style="text-align: right; padding: 2px 5px;"></td> </tr> <tr> <td style="padding: 2px 5px;">    Scholarship Fund .....</td> <td style="text-align: right; padding: 2px 5px;">0.00</td> </tr> <tr> <td style="padding: 2px 5px;">Wildlife Diversity Fund .....</td> <td style="text-align: right; padding: 2px 5px;">16,859.00</td> </tr> <tr> <td style="padding: 2px 5px;">YMCA Youth &amp; Gov't. Program</td> <td style="text-align: right; padding: 2px 5px;">2,814.00</td> </tr> </table>	Jr. Livestock Auction		Scholarship Fund .....	0.00	Multiple Sclerosis Society Fund	5,529.00	Oklahoma Common Schools ..	0.00	Okla. Honor Flights .....	8,036.00	Okla. Leukemia & Lymphoma		Revolving Fund .....	7,762.00	Okla. Lupus Revolving Fund...	4,158.00	Okla. Pet Overpopulation Fund..	14,636.00	Okla. Road & Highway		Maintenance Fund .....	0.00	Okla. Silver-Haired Legislature		& Alumni Assoc. Program ...	56.00	Okla. Sports Eye Safety Program	1,051.00	Public School Classroom		Support Fund .....	10,629.00	Support of Domestic Violence/		Sexual Assault Services.....	6,084.00	Support of Volunteer Fire Depts	9,854.00	Support Okla. Medicaid Program..	0.00	Support Okla. Nat'l. Guard.....	10,322.00	Support Program for Regional		Food Banks .....	21,882.00	Tulsa Reconciliation Educ. &		Scholarship Fund .....	0.00	Wildlife Diversity Fund .....	16,859.00	YMCA Youth & Gov't. Program	2,814.00
Jr. Livestock Auction																																																							
Scholarship Fund .....	0.00																																																						
Multiple Sclerosis Society Fund	5,529.00																																																						
Oklahoma Common Schools ..	0.00																																																						
Okla. Honor Flights .....	8,036.00																																																						
Okla. Leukemia & Lymphoma																																																							
Revolving Fund .....	7,762.00																																																						
Okla. Lupus Revolving Fund...	4,158.00																																																						
Okla. Pet Overpopulation Fund..	14,636.00																																																						
Okla. Road & Highway																																																							
Maintenance Fund .....	0.00																																																						
Okla. Silver-Haired Legislature																																																							
& Alumni Assoc. Program ...	56.00																																																						
Okla. Sports Eye Safety Program	1,051.00																																																						
Public School Classroom																																																							
Support Fund .....	10,629.00																																																						
Support of Domestic Violence/																																																							
Sexual Assault Services.....	6,084.00																																																						
Support of Volunteer Fire Depts	9,854.00																																																						
Support Okla. Medicaid Program..	0.00																																																						
Support Okla. Nat'l. Guard.....	10,322.00																																																						
Support Program for Regional																																																							
Food Banks .....	21,882.00																																																						
Tulsa Reconciliation Educ. &																																																							
Scholarship Fund .....	0.00																																																						
Wildlife Diversity Fund .....	16,859.00																																																						
YMCA Youth & Gov't. Program	2,814.00																																																						
<b>Individual Self-Insurance</b>																																																							
<b>Premium Tax</b> .....	\$ 7,378.49																																																						
Balance, July 1, 2012 .....	23,055.74																																																						
	Reserve* .....																																																						
	\$ 30,434.23																																																						
<b>Intercept Account</b>	\$ 27,857,832.53																																																						
	Transfer to 1695S .....																																																						
	\$27,856,605.37																																																						
	Transfer .....																																																						
	1,227.16																																																						





# FISCAL YEAR 2012-2013

## REVENUE AND APPORTIONMENT, CONTINUED

### WHERE IT CAME FROM

Marginal Well Fee .....\$ 682,561.05

#### Mixed Beverage Gross

Receipts Tax.....\$ 44,002,413.37  
Cancelled Vouchers..... 10,997.66

#### Motor Vehicle Collections:

Motor Lic. Agent Remits ...\$ 648,438,634.36  
Motor Vehicle Rental Tax.... 10,069,382.96  
Drivers Lic. Reinstatement Fee 3,000,000.00  
Overweight Truck Permits .. 14,592,000.00  
Cancelled Vouchers ..... 14,096.66

### WHERE IT WENT

Commission on Marginal  
Producing Wells .....\$ 607,106.89  
Oklahoma Tax Comm. Fund ... 20,472.04  
Sustain Okla. Energy Resources 54,822.21  
Refunded ..... 159.91

General Revenue Fund .....\$ 43,669,086.80  
Refunded ..... 344,324.23

Cities and Towns.....\$ 20,441,974.64  
Counties for Roads ..... 47,738,002.07  
County Government..... 5,471,223.87  
County Improvement  
Road & Bridge Rev. Fund .. 99,297,039.31  
County Road Fund..... 17,075,040.15  
County Road Improvement  
Revolving Fund ..... 23,869,001.05  
Dept. of Public Safety Rev. Fund 714,768.00  
DPS Imaging System  
Revolving Fund ..... 5,386,677.25  
DPS Patrol Vehicle Fund ..... 850,000.00  
General Revenue Fund ..... 192,591,703.59  
M.V. Driver Education Fund.... 900,000.00  
Motorcycle Safety & Education  
Revolving Fund ..... 370,839.00  
Oklahoma Law Enforcement  
Retirement Fund ..... 8,585,523.39  
Oklahoma Tax Comm. Fund ... 840,690.29  
OTC Reimbursement Fund..... 3,423,285.96



# FISCAL YEAR 2012-2013

## REVENUE AND APPORTIONMENT, CONTINUED

### WHERE IT CAME FROM

#### Motor Vehicle Collections - continued...

<b>Motor Fuel Special</b>	
Assessment Fee .....	\$ 32,126,374.92
Cancelled Vouchers .....	9,122.53

**Multiple Injury Trust Fund ...** \$ 35,651,505.20

### WHERE IT WENT

School Districts .....	238,717,323.32
State Hwy. Construction & Maintenance Fund .....	3,123,679.15
State Transportation Fund.....	1,933,880.83
Trauma Care Assistance Revolving Fund .....	3,395,412.50
Wildlife Conservation Fund.....	187,149.76
Refunded .....	579,306.85
Transfer.....	621,593.00

Corporation Comm. Fund .....	\$ 1,000,000.00
Corporation Comm. Storage Tank Regulation Rev. Fund .....	0.00
Dept. of Environmental Quality Revolving Fund.....	2,300,419.54
Payments to Tribes .....	1,402,079.59
Petroleum Storage Tank Indemnity Fund .....	20,454,824.98
State Transportation Fund .....	0.00
Weigh Station Improvement Revolving Fund .....	6,000,000.00
Refunded .....	978,173.34

Multiple Injury Trust Fund.....	\$ 32,251,759.91
Pub. Employees Safety Fund ...	1,275,000.00
Vocational-Technical Fund.....	637,500.00
Workers Compensation Fraud Unit Fund.....	637,500.00
Refunded .....	849,745.29



# FISCAL YEAR 2012-2013

## REVENUE AND APPORTIONMENT, CONTINUED

### WHERE IT CAME FROM

### WHERE IT WENT

#### NASCAR License Plates

Transfer .....\$ 8,050.00

General Revenue Fund ..... \$ 995.00  
 NASCAR Racing Plates..... 1,851.50  
 National Stock Car Association 161.00  
 OTC Reimbursement Fund..... 5,042.50

#### Occupational Health and

**Safety Tax** .....\$ 2,681,501.34  
 Cancelled Vouchers ..... 280.00

Special Occupational Health  
 and Safety Fund..... \$ 2,662,588.30  
 Refunded ..... 19,193.04

#### Oklahoma Tax Commission

**Reimbursement** .....\$ 6,247,282.43

OTC Reimbursement Fund... \$ 6,247,282.43

**Organ Donor Program**.....\$ 152,450.13

Department of Public Safety.. \$ 1,386.96  
 Oklahoma Tax Comm. Fund ... 133.09  
 Organ Donor Revolving Fund 150,930.08

**Pari-Mutuel Tax** .....\$ 1,183,821.35

General Revenue Fund ..... \$ 1,183,821.35

**Petroleum Excise Tax - Gas..** \$ 4,497,944.85

Corp. Comm. Plugging Fund \$ 474,699.82  
 General Revenue Fund ..... 3,714,872.95  
 Interstate Oil Compact Fund... 307,607.09  
 Refunded ..... 764.99

**Petroleum Excise Tax - Oil..** \$ 8,065,863.46

Corp. Comm. Plugging Fund \$ 835,052.74  
 General Revenue Fund ..... 6,555,552.80  
 Interstate Oil Compact Fund... 542,633.57  
 Refunded ..... 132,624.35

**Pick Six/Seven Wager** .....\$ 7,843.33

General Revenue Fund ..... \$ 7,843.33



# FISCAL YEAR 2012-2013

## REVENUE AND APPORTIONMENT, CONTINUED

WHERE IT CAME FROM		WHERE IT WENT	
<b>Prepaid Wireless Fee</b> .....	\$ 2,656,101.39	Certified 911 Entities .....	\$ 2,601,229.58
Cancelled Vouchers .....	127.78	Oklahoma Tax Comm. Fund	53,086.35
		Refunded .....	1,913.24
<b>Printing &amp; Revolving Fund</b> \$	1,063,048.54	Oklahoma Tax Comm. Fund \$	1,061,131.30
		Refunded .....	1,917.24
<b>Public Service Penalties</b> .....	\$ 1,092.00	Counties for Ad Valorem Dist.\$	3,125.00
Balance, July 1, 2012 .....	5,158.00	General Revenue Fund .....	3,125.00
<b>Registered Agents Fees</b> .....	\$ 9,395.00	General Revenue Fund.....	\$ 7,759.11
		Reserve* .....	1,635.89
<b>Rural Electric Co-op License</b> \$	5,089.58	General Revenue Fund .....	\$ 5,089.58
<b>Sales Tax - State</b> .....	\$2,309,126,244.67	Educ. Reform Rev. Fund.....	\$237,807,948.42
Cancelled Vouchers.....	910,837.91	General Revenue Fund .....	1,902,978,261.95
Interest Earned.....	2,106,123.62	Oklahoma Historical Society	
		Capital Revolving Fund.....	1,364,099.13
		Oklahoma Tourism Rev. Fund	7,047,845.51
		Okla. Tourism Capital	
		Improvement Rev. Fund.....	12,731,591.90
		Qualified Aircraft Manufacturer	
		Ad Valorem Rebate .....	0.00
		Teachers Retirement Fund.....	113,674,927.56
		Refunded .....	33,267,703.34
		Transfer.....	3,270,828.39
<b>Sales Tax - City</b> .....	\$1,557,122,108.99	#1695B to Cities & Towns..	\$1,544,360,000.36
Interest Earned.....	1,383,140.77	Oklahoma Tax Comm. Fund ...	15,517,180.03
Transfer .....	2,755,071.40	Interest to Cities and Towns....	1,383,140.77



# FISCAL YEAR 2012-2013

## REVENUE AND APPORTIONMENT, CONTINUED

### WHERE IT CAME FROM

<b>Sales Tax - County</b> .....\$	339,011,262.90
Interest Earned.....	301,315.88
Transfer .....	515,756.99
<b>Sales Tax Permits</b> ..... \$	641,418.36
Cancelled Vouchers.....	40.00
<b>Sales Tax Vendors List</b> ..... \$	1,050.00
<b>Service Charge Fee</b> .....	\$ 49,919.97
<b>Severance Tax on Gas</b> .....	\$ 234,039,855.62
Cancelled Vouchers.....	4,138,192.60
<b>Severance Tax on Oil</b> .....\$	468,468,873.43
Cancelled Vouchers .....	5,887,840.79

### WHERE IT WENT

#1695B to Counties .....	\$336,150,773.03
Oklahoma Tax Comm. Fund ...	3,376,246.86
Interest to Counties.....	301,315.88
General Revenue Fund .....	\$ 639,566.87
Refunded .....	1,891.49
Oklahoma Tax Comm. Fund \$	1,050.00
Oklahoma Tax Comm. Fund \$	49,919.97
Counties for Roads .....	\$ 22,229,498.91
General Revenue Fund .....	50,400,053.29
School Districts .....	22,229,498.91
Refunded .....	143,318,997.11
Chief Medical Examiner Revolving Fund .....	\$ 0.00
Circuit Engineering Dist. Revolving Fund .....	2,110,123.16
Common Education Technical Fund.....	47,372,297.60
Community Water Infra-Structure Development Rev. Fund .....	2,627,702.40
Conservation Commission Infra-Structure Rev. Fund.....	2,627,702.40
Counties for Roads .....	40,312,679.44
Counties for Bridge and Road Improvement Fund .....	14,770,824.59
DPS Patrol Academy .....	0.00
General Revenue Fund .....	171,210,904.20
Higher Educ. Capital Fund.....	47,372,297.60



# FISCAL YEAR 2012-2013

## REVENUE AND APPORTIONMENT, CONTINUED

WHERE IT CAME FROM		WHERE IT WENT	
<b>Severance Tax on Oil - continued...</b>		Oklahoma Student Aid	
		Revolving Fund .....	47,372,297.60
		School Districts .....	40,312,679.44
		State Dept. of Education	
		Disbursing Fund.....	0.00
		State Emergency Fund .....	0.00
		Tourism and Recreation Capital	
		Expenditure Rev. Fund .....	2,627,702.40
		Refunded .....	55,639,503.39
<b>Special Fuel Decals .....</b>	<b>\$ 88,049.00</b>	General Revenue Fund .....	\$ 0.00
		State Transportation Fund .....	88,049.00
<b>Special Fuel Tax.....</b>	<b>\$ 35,970.27</b>	Circuit Engineering Dist.	
		Revolving Fund .....	\$ 115.89
		Counties for Bridge & Road	
		Improvement Fund.....	810.31
		Counties for Roads .....	9,178.00
		General Revenue Fund .....	333.41
		State Transportation Fund .....	19,198.66
		Reserve* .....	6,334.00
<b>Special License Plates</b>		Adoption Creates Family.....	\$ 1,200.00
Transfer .....	\$ 613,543.00	Ag-N-Class Fund .....	5,688.00
		Animal Friendly Rev. Fund.....	7,040.00
		Attorney General Rev. Fund ..	220.00
		Boy Scouts of America.....	880.00
		Breast Cancer Fund.....	11,480.00
		Buffalo Soldier License Plates	3,440.00



# FISCAL YEAR 2012-2013

## REVENUE AND APPORTIONMENT, CONTINUED

### WHERE IT CAME FROM

Special License Plates - continued ...

### WHERE IT WENT

Child Abuse Prevention Fund	1,280.00
Children's Hosp. Safe Kids Fund	0.00
Choose Life Assist. Rev. Fund	6,620.00
Colleges & Universities.....	172,560.00
Color Oklahoma Rev. Fund....	5,060.00
Dept. of Commerce Rev. Fund	460.00
EMT Death Benefit Rev. Fund	3,760.00
Education Reform Rev. Fund	219.65
Environmental Educ. Rev. Fund	9,552.00
Firemans Museum and Building Memorial Fund .....	63,860.00
4-H Club.....	400.00
Global War on Terrorism .....	1,500.00
Heartland Scholarship Fund ..	860.00
Higher Education Rev. Fund..	219.65
Historical Society Rev. Fund..	540.00
Law Enforcement Retirement Fund	6,000.00
Lions Club Service Foundation	180.00
March of Dimes.....	280.00
Mental Retardation Rev. Fund	25,884.00
Okla. Dept. Career & Technology Education Ag. Rev. Fund - FFA	540.00
Okla. Pet Overpopulation Fund	3,860.00
Okla. Tax Comm. Reimb. Fund	173,596.00
Pancreatic Cancer Research Fund	2,540.00
Patriot License .....	9,060.00
Quarter Horse Revolving Fund	2,520.00



# FISCAL YEAR 2012-2013

## REVENUE AND APPORTIONMENT, CONTINUED

### WHERE IT CAME FROM

Special License Plates - continued...

### WHERE IT WENT

Spec. Prog. Assist. Rev. Fund	
Realtors License .....	4,680.00
Support Our Troops Supporters	300.00
Teachers Retirement Fund.....	3,734.05
Tourism Department Revolving	
Fund - Route 66 .....	4,100.00
Tourism Department Revolving	
Fund - State Parks .....	4,899.00
U.S. Olympic Committee.....	2,231.00
Urban Forest & Beauty Rev. Fund	4,180.00
Vocational-Technical Fund.....	219.65
Wildlife Diversity Fund .....	67,900.00

### State/Tribal Compact

Stamps ..... \$ 23,890,932.34

Belle Maxine Hilliard Breast and	
Cervical Cancer Fund .....	\$ 88,582.05
Cancer Center Service	
Revolving Fund .....	620,074.02
General Revenue Fund .....	10,669,737.78
Health Employee & Econ.	
Improvement Fund.....	4,427,778.05
Mental Health & Substance	
Abuse Fund.....	530,169.91
Okla. Health Care Authority ...	5,296,410.51
OSU Osteopathic Medicine	
Revolving Fund .....	620,074.02
Tobacco Prevention & Cessation	
Revolving Fund .....	132,211.94
Trauma Care Assist. Rev. Fund	1,505,894.06





# FISCAL YEAR 2012-2013

## REVENUE AND APPORTIONMENT, CONTINUED

WHERE IT CAME FROM		WHERE IT WENT	
<b>Tax Security Fund</b> .....\$	197,770.94	Refunded .....	\$ 292,441.52
Balance, July 1, 2012 .....	2,541,667.74	Reserve* .....	2,469,446.16
Cancelled Vouchers.....	22,449.00		
<b>Telephone Surcharge</b> .....	\$ 712,765.14	Telecommunications for Hearing Impaired Rev. Fund.....	\$ 712,694.06
		Refunded .....	71.08
<b>Tire Recycling Fee</b> .....\$	12,588,057.46	\$2.50 Fee for Dept. of Environmental Quality Revolving Fund....	\$ 2,856,969.07
Cancelled Vouchers .....	16.03	Dept. of Environmental Quality Revolving Fund .....	556,011.03
		Oklahoma Tax Comm. Fund ..	217,569.49
		Waste Tire Recycling Indemnity Fund .....	8,952,022.60
		Refunded .....	5,501.30
<b>Tobacco Products License</b> \$	77,070.00	Oklahoma Tax Commission Reimbursement Fund .....	\$ 77,070.00
<b>Tobacco Products Tax</b> .....	\$ 40,536,720.07	Belle Maxine Hilliard Breast and Cervical Cancer Fund .....	\$ 96,890.21
		Cancer Center Service Revolving Fund .....	680,432.96
		Cities and Counties.....	3,175,353.82
		Education Reform Rev. Fund	455,824.02
		General Revenue Fund .....	22,156,911.14
		Health Employee and Economy Improvement Fund.....	4,857,718.79
		Mental Health and Substance Abuse Fund.....	583,542.83



# FISCAL YEAR 2012-2013

## REVENUE AND APPORTIONMENT, CONTINUED

### WHERE IT CAME FROM

**Tobacco Products Tax - continued...**

**Tourism Gross Receipts Tax** \$ 3,282.12  
**Balance, July 1, 2012** ..... 108,516.86

#### **Transport and Reclaimer**

**Permits** .....\$ 58,194.69

#### **Tribal Cigarette/**

**Tobacco Payments** .....\$ 30,781,871.14

### WHERE IT WENT

Oklahoma Emergency Response  
 System Stabilization &  
 Improvement Revolving Fund 1,028,858.74  
 Okla. Health Care Authority ... 5,809,003.68  
 OSU Osteopathic Medicine  
 Revolving Fund..... 680,432.96  
 Teachers Retirement Fund..... 220,204.83  
 Tobacco Prevention and  
 Cessation Rev. Fund..... 145,335.19  
 Trauma Care Assist. Rev. Fund 622,677.56  
 Refunded ..... 23,533.34

Refunded ..... \$ 55.16  
 Reserve\* ..... 111,743.82

General Revenue Fund ..... \$ 58,194.69

Belle Maxine Hilliard Breast and  
 Cervical Cancer Fund ..... \$ 114,359.25  
 Cancer Center Service  
 Revolving Fund ..... 800,514.53  
 General Revenue Fund ..... 2,940,368.63  
 Health Employee and Economy  
 Improvement Fund..... 5,716,254.04  
 Mental Health and Substance  
 Abuse Fund..... 684,448.45  
 Oklahoma Emergency Response  
 System Stabilization &  
 Improvement Revolving Fund 205,748.11



# FISCAL YEAR 2012-2013

## REVENUE AND APPORTIONMENT, CONTINUED

WHERE IT CAME FROM	WHERE IT WENT
<b>Tribal Cigarette/Tobacco Payments - cont'd.</b>	Okla. Health Care Authority ... 6,837,657.06
	OSU Osteopathic Medicine Revolving Fund ..... 800,514.53
	Tobacco Prevention and Cessation Rev. Fund..... 170,685.40
	Trauma Care Assist. Rev. Fund 1,738,358.58
	Tribal Trust Account 1695T .... 10,772,962.56
<b>Unapplied Payments</b> .....\$ 48,792.79	Reserve* ..... \$ 400,063.62
Balance, July 1, 2012 ..... 351,270.83	
<b>Unclassified Receipts</b> .....\$ 142,920.70	General Revenue Fund ..... \$ 49,412.95
Balance, July 1, 2012 ..... 156,392.56	Transfer..... 27,002.01
Cancelled Vouchers ..... 65.00	Refunded ..... 4,742.51
Transfer ..... 15,294.34	Reserve* ..... 233,515.13
<b>Use Tax - State</b> .....\$ 232,266,534.65	Educ. Reform Rev. Fund..... \$ 23,343,278.24
Interest Earned ..... 229,796.51	General Revenue Fund ..... 186,819,805.47
Cancelled Vouchers..... 872,929.44	Oklahoma Historical Society Capital Improv. Rev. Fund 133,900.27
	Oklahoma Tourism Rev. Fund 691,817.97
	Oklahoma Tourism Capital Improvement Rev. Fund..... 1,249,735.74
	Teachers Retirement Fund..... 11,158,354.80
	Refunded ..... 9,972,368.11
<b>Use Tax - City</b> .....\$ 123,702,533.09	#1695U to Cities ..... \$ 122,472,695.21
Interest Earned ..... 119,449.10	Oklahoma Tax Comm. Fund .. 1,229,837.88
	Interest to Cities..... 119,449.10



# FISCAL YEAR 2012-2013

## REVENUE AND APPORTIONMENT, CONTINUED

WHERE IT CAME FROM		WHERE IT WENT	
<b>Use Tax - County</b> .....	\$ 30,865,069.82	#1695U to Counties .....	\$ 30,558,980.47
Interest Earned .....	29,639.95	Oklahoma Tax Comm. Fund ..	306,089.35
		Interest to Counties.....	29,639.95
<b>Vehicle Revenue Tax</b>			
<b>Stamps</b> .....	\$ 51,753.13	General Revenue Fund .....	\$ 51,753.13
<b>Wire Transmitter Fee</b> .....	\$ 9,764,828.02	Drug Money Laundering & Wire	
		Transmitter Rev. Fund.....	\$ 9,764,828.02
<b>Workers Compensation</b>			
<b>Insurance Premium Tax</b> \$	9,932,740.08	General Revenue Fund .....	\$ 9,932,735.92
		Refunded .....	4.16

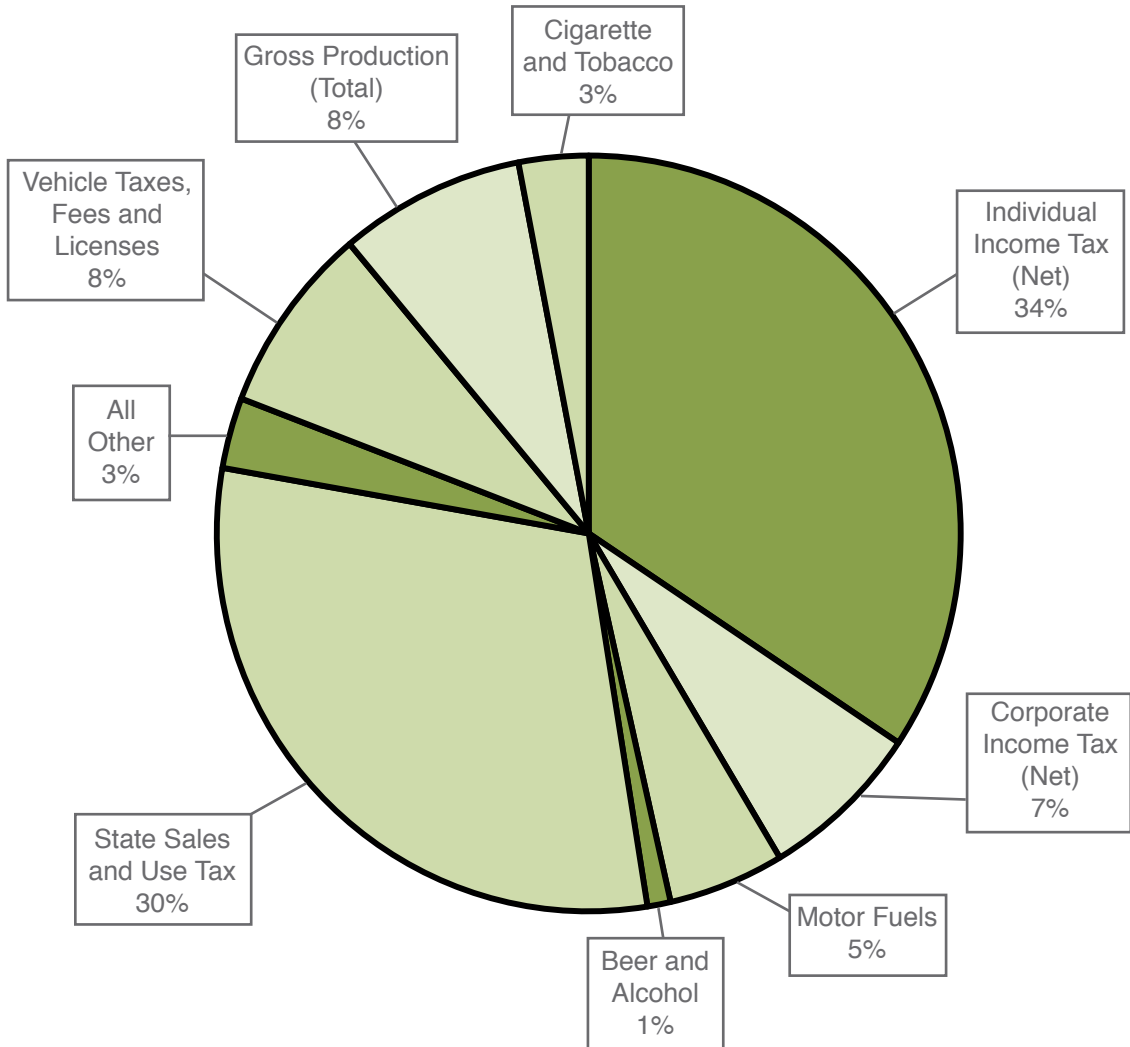
*\*Reserve - Funds held in litigation or for other disposition.*

This page  
intentionally  
left blank.



# THE OKLAHOMA TAX DOLLAR FISCAL YEAR 2012-2013

## HOW FUNDS WERE PAID IN...

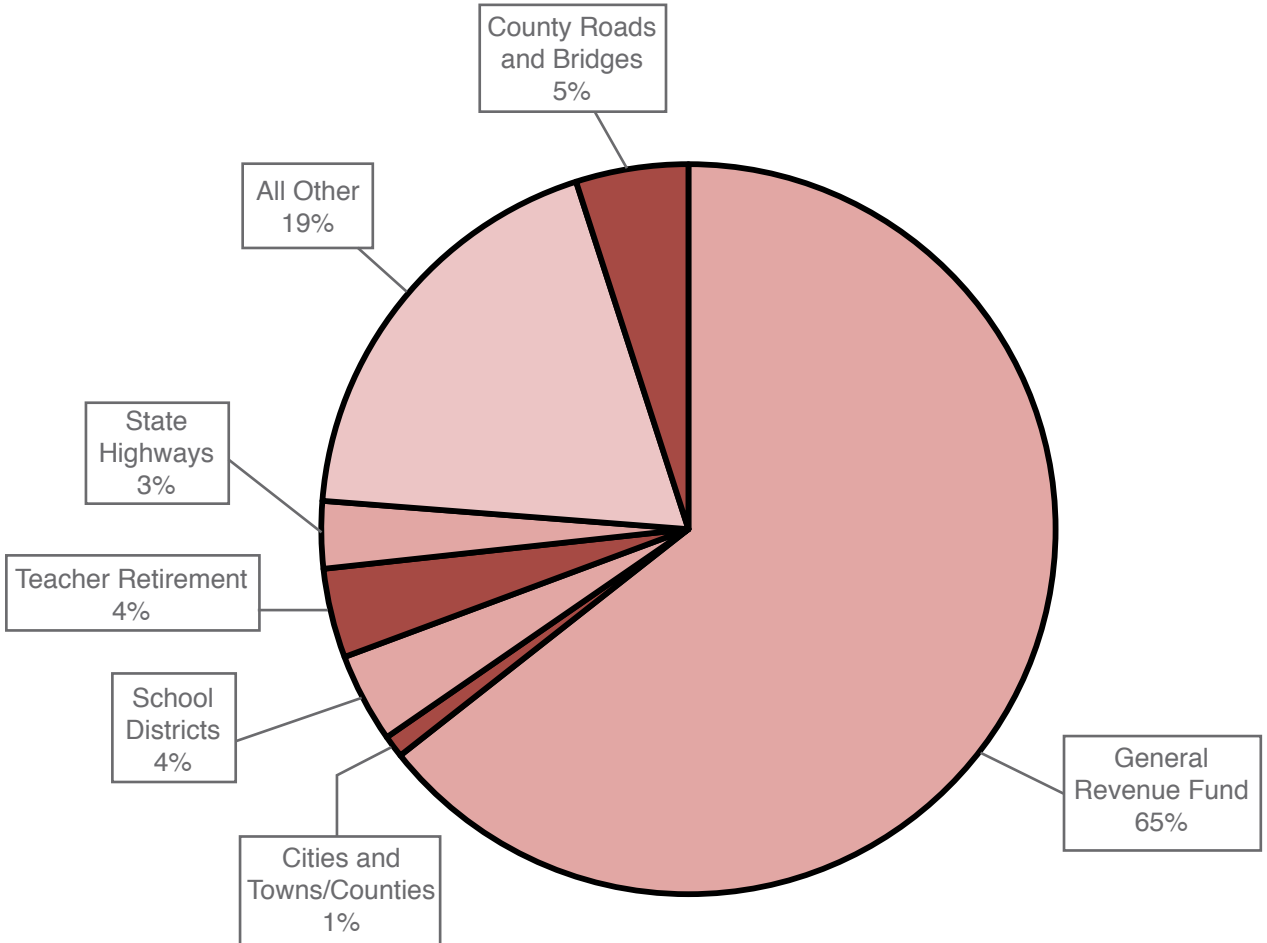


NOTE: Detail does not add to 100% due to rounding.



# THE OKLAHOMA TAX DOLLAR FISCAL YEAR 2012-2013

## HOW FUNDS WERE ALLOCATED...



NOTE: Detail does not add to 100% due to rounding.



# COLLECTIONS FROM MAJOR TAX SOURCES FROM FISCAL YEAR 1980 TO 2013

FISCAL YEAR	ALCOHOLIC BEVERAGE TAX	BEVERAGE TAX AND LICENSE	CIGARETTE TAX AND LICENSE
1979-80	\$ 20,033,037.65	\$ 17,839,803.05	\$ 72,184,088.34
1980-81	22,608,530.14	19,124,697.63	75,409,357.64
1981-82	26,936,113.35	20,750,346.44	79,105,682.56
1982-83	21,528,188.11	20,609,067.22	77,316,825.67
1983-84	22,070,964.24	19,064,009.01	74,400,966.93
1984-85	24,331,611.21	18,830,715.27	72,283,974.78
1985-86	21,759,685.17	18,887,456.81	68,549,166.47
1986-87	22,482,970.07	18,642,570.50	67,244,191.98
1987-88	22,854,857.62	20,407,801.13	77,025,019.81
1988-89	22,746,924.78	20,453,797.43	71,758,582.13
1989-90	21,322,343.54	20,964,717.45	64,844,874.31
1990-91	22,334,739.85	21,906,697.30	61,134,184.61
1991-92	24,484,489.08	21,904,683.97	59,938,189.24
1992-93	23,561,685.89	22,223,294.17	59,620,956.38
1993-94	21,640,310.12	23,223,491.26	58,720,852.35
1994-95	20,628,294.63	23,262,389.54	59,836,554.25
1995-96	21,262,454.53	23,541,345.18	59,410,347.29
1996-97	21,474,281.97	22,978,239.70	60,037,768.18
1997-98	21,553,557.26	22,954,286.87	59,185,348.52
1998-99	21,876,950.17	24,389,796.22	57,689,056.21
1999-00	22,723,044.83	24,116,660.13	54,962,083.60
2000-01	23,123,522.87	23,815,059.73	53,413,374.62
2001-02	23,203,429.51	24,513,301.28	50,194,174.41
2002-03	24,398,575.92	24,234,319.98	49,556,356.67
2003-04	25,300,218.24	24,811,245.00	47,400,129.71
2004-05	26,596,570.02	24,639,440.65	89,162,719.24
2005-06	27,609,293.01	25,093,114.22	171,367,929.40
2006-07	29,244,617.04	26,004,202.19	175,180,528.57
2007-08	31,210,006.85	26,444,356.75	183,809,900.77
2008-09	32,460,352.97	27,088,268.24	182,732,906.05
2009-10	32,588,698.20	26,467,227.89	179,591,949.68
2010-11	34,494,603.28	26,215,211.69	192,487,361.26
2011-12	35,776,423.62	26,074,043.43	202,381,480.54
2012-13	37,430,642.77	25,671,907.10	187,704,518.35





# COLLECTIONS FROM MAJOR TAX SOURCES FROM FISCAL YEAR 1980 TO 2013

FISCAL YEAR	CORPORATE FRANCHISE TAX	ESTATE TAX	GASOLINE EXCISE TAX
1979-80	\$ 16,381,459.92	\$ 26,949,620.20	\$ 110,308,844.10
1980-81	17,898,346.71	37,249,569.43	107,345,955.18
1981-82	21,157,453.08	41,041,076.00	112,726,757.40
1982-83	26,197,931.67	33,540,812.60	102,477,585.90
1983-84	29,816,622.05	32,786,149.10	117,753,293.79
1984-85	31,226,619.30	38,904,438.90	154,037,835.20
1985-86	31,483,361.37	40,338,032.52	166,151,370.53
1986-87	31,668,464.82	48,505,802.28	166,816,383.64
1987-88	29,165,946.73	40,941,272.67	260,623,155.06
1988-89	31,870,387.98	37,468,768.22	262,391,848.31
1989-90	30,151,869.50	68,176,044.54	257,946,909.29
1990-91	31,982,535.31	40,893,163.21	252,513,480.71
1991-92	34,473,871.18	47,777,649.76	255,085,238.03
1992-93	34,807,512.45	52,554,654.87	261,343,561.58
1993-94	33,137,308.23	59,210,328.67	270,081,640.25
1994-95	37,488,141.18	70,665,558.76	269,691,827.48
1995-96	37,061,721.02	70,199,010.44	277,570,832.38
1996-97	40,609,631.42	82,916,175.00	288,186,091.41
1997-98	43,252,598.30	84,618,546.81	295,453,185.30
1998-99	38,408,335.84	91,778,457.84	294,625,500.86
1999-00	44,020,388.09	91,608,541.37	297,860,742.94
2000-01	43,390,067.39	87,229,923.85	290,106,696.19
2001-02	43,985,617.30	89,348,868.90	299,449,743.40
2002-03	42,971,021.87	77,218,464.77	295,443,382.40
2003-04	42,689,670.78	113,134,722.11	302,800,579.83
2004-05	42,094,064.80	83,242,896.32	302,625,479.28
2005-06	44,019,735.24	82,049,032.56	313,105,945.98
2006-07	46,131,517.38	71,195,259.31	282,451,545.32
2007-08	49,368,021.18	61,346,283.01	287,351,081.20
2008-09	49,256,040.31	43,864,213.57	305,202,959.77
2009-10	47,610,979.71	25,650,327.06	302,482,633.39
2010-11	29,648,467.84	7,271,915.57	301,155,918.90
2011-12	1,975,309.22	486,372.27	301,269,750.04
2012-13	459,493.66	933,054.16	298,168,227.27



# COLLECTIONS FROM MAJOR TAX SOURCES FROM FISCAL YEAR 1980 TO 2013

FISCAL YEAR	GROSS PRODUCTION (SEVERANCE)	INCOME TAX
1979-80	\$ 404,823,755.27	\$ 587,193,987.97
1980-81	573,143,749.27	732,491,215.68
1981-82	719,815,453.52	910,117,696.27
1982-83	757,158,759.33	937,761,228.50
1983-84	690,535,543.74	934,043,644.54
1984-85	691,895,910.31	1,016,112,851.65
1985-86	557,997,023.88	1,011,481,103.62
1986-87	362,087,526.79	984,516,119.54
1987-88	384,350,038.77	1,087,802,020.98
1988-89	367,940,574.94	1,212,735,586.14
1989-90	396,017,037.36	1,273,244,733.30
1990-91	411,833,398.83	1,537,508,655.15
1991-92	352,833,539.38	1,575,105,747.43
1992-93	393,923,620.72	1,663,795,466.66
1993-94	366,920,185.64	1,740,972,482.42
1994-95	304,820,115.47	1,854,084,640.35
1995-96	319,872,733.61	1,970,190,154.03
1996-97	407,984,189.30	2,188,886,965.94
1997-98	355,203,676.44	2,433,543,442.27
1998-99	249,405,330.04	2,608,552,852.35
1999-00	404,797,409.32	2,730,883,008.94
2000-01	735,228,790.38	2,905,674,203.95
2001-02	411,466,717.16	2,985,724,811.66
2002-03	592,896,596.01	2,874,367,248.65
2003-04	691,778,683.23	3,063,040,440.43
2004-05	863,919,366.55	3,327,902,994.54
2005-06	1,153,000,310.87	3,785,151,544.62
2006-07	987,972,285.22	4,041,754,427.28
2007-08	1,249,985,305.22	3,890,555,000.24
2008-09	1,158,639,144.86	3,715,023,639.59
2009-10	857,470,763.78	3,266,190,476.83
2010-11	964,935,883.60	3,496,279,755.36
2011-12	882,660,378.39	3,855,827,402.18
2012-13	702,508,729.05	4,123,861,207.68



# COLLECTIONS FROM MAJOR TAX SOURCES FROM FISCAL YEAR 1980 TO 2013

FISCAL YEAR	STATE SALES TAX	TOBACCO TAX AND LICENSE
1979-80	\$ 295,037,646.58	\$ 4,437,593.16
1980-81	356,759,065.80	4,052,476.40
1981-82	436,942,144.44	3,413,307.81
1982-83	381,033,622.58	3,433,998.66
1983-84	433,697,267.07	3,286,404.37
1984-85	595,528,804.28	3,141,879.57
1985-86	617,945,936.26	6,942,915.59
1986-87	582,005,604.22	7,469,990.34
1987-88	720,617,036.57	7,588,867.54
1988-89	741,154,594.19	7,775,579.86
1989-90	797,801,533.18	8,261,426.15
1990-91	914,166,144.94	8,605,095.01
1991-92	933,260,371.13	9,011,092.56
1992-93	963,946,124.46	9,665,004.32
1993-94	1,037,995,359.77	10,622,914.27
1994-95	1,082,606,025.06	11,307,777.31
1995-96	1,140,278,257.32	11,256,302.12
1996-97	1,196,522,747.55	11,205,801.61
1997-98	1,250,691,551.19	11,073,449.68
1998-99	1,304,901,412.95	11,798,115.22
1999-00	1,373,889,863.62	11,912,561.93
2000-01	1,457,854,666.44	12,001,630.60
2001-02	1,455,966,209.97	11,496,852.26
2002-03	1,422,902,928.14	12,284,532.09
2003-04	1,515,360,556.51	12,424,875.82
2004-05	1,574,890,574.21	18,708,447.75
2005-06	1,721,568,174.17	27,096,112.12
2006-07	1,820,605,119.63	26,373,544.15
2007-08	1,972,101,510.49	27,222,520.09
2008-09	2,015,216,791.35	28,359,841.56
2009-10	1,836,118,059.69	30,006,855.67
2010-11	2,010,705,806.12	35,056,774.90
2011-12	2,203,993,461.60	38,296,123.50
2012-13	2,309,126,244.67	40,613,790.07



Our mission is to serve the people of Oklahoma by promoting tax compliance through quality service and fair administration.

For further information regarding this or any publication of the Oklahoma Tax Commission, please contact the Communications Division at (405) 521-3637.