



OKLAHOMA TAX COMMISSION

ANNUAL
REPORT
OF THE
TAX

Fiscal Year Ended

June 30, 2009



**ANNUAL REPORT
OF THE
OKLAHOMA TAX COMMISSION**



**FISCAL YEAR
ENDED JUNE 30, 2009**



Information prepared by the Accounting Division of the Management Services Division and the Research Office of the Tax Policy Division. Designed by the Communications Division.

This publication was issued under the authority of the Oklahoma Tax Commission. Copies have not been printed but are available at www.tax.ok.gov.



OKLAHOMA TAX COMMISSION STATE OF OKLAHOMA

THOMAS E. KEMP, Chairman
JERRY JOHNSON, Vice-Chairman
CONSTANCE IRBY, Secretary-Member

2501 NORTH LINCOLN BLVD.
OKLAHOMA CITY, OK 73194-0001

To the Honorable Brad Henry, Governor,
and Members of the Oklahoma Legislature:

On behalf of the Oklahoma Tax Commission, we are pleased to submit to you and the legislative members our annual report for the fiscal year ended June 30, 2009.

Total collections from **all** sources administered by the Commission during Fiscal Year 2009 totaled \$10,568,893,086.31. Gross collections from state-levied taxes, licenses and fees, **exclusive** of city/county sales and use taxes and county lodging taxes, amounted to \$8,783,165,580.52.

We remain steadfast to our mission of serving the people of Oklahoma by promoting tax compliance through quality service and fair administration.

Respectfully submitted,



Thomas E. Kemp, Jr., Chairman



Jerry Johnson, Vice-Chairman



Constance Irby, Secretary-Member



TABLE OF CONTENTS

Background Summary of the Oklahoma Tax Commission	2
Oklahoma Tax Commission Organizational Chart.....	3
Review of 2008-2009 Taxes and Collections.....	4
Comparative Statement of all Tax Collections of the Past Two Years	12
Apportionment of Statutory Revenues.....	16
Fiscal Year 2008-2009 Revenue and Apportionment	22
The Oklahoma Tax Dollar Fiscal Year 2008-2009	42
Collections from Major Tax Sources from Fiscal Year 1976 through Fiscal Year 2009.....	44



BACKGROUND SUMMARY OF THE OKLAHOMA TAX COMMISSION

The Oklahoma Tax Commission, from its inception in 1931, has been responsible for the collection and administration of various tax sources and the apportionment of these revenues to state funds which provide monies for education, transportation, recreation, social welfare, and the myriad of other services provided for the citizens of Oklahoma.

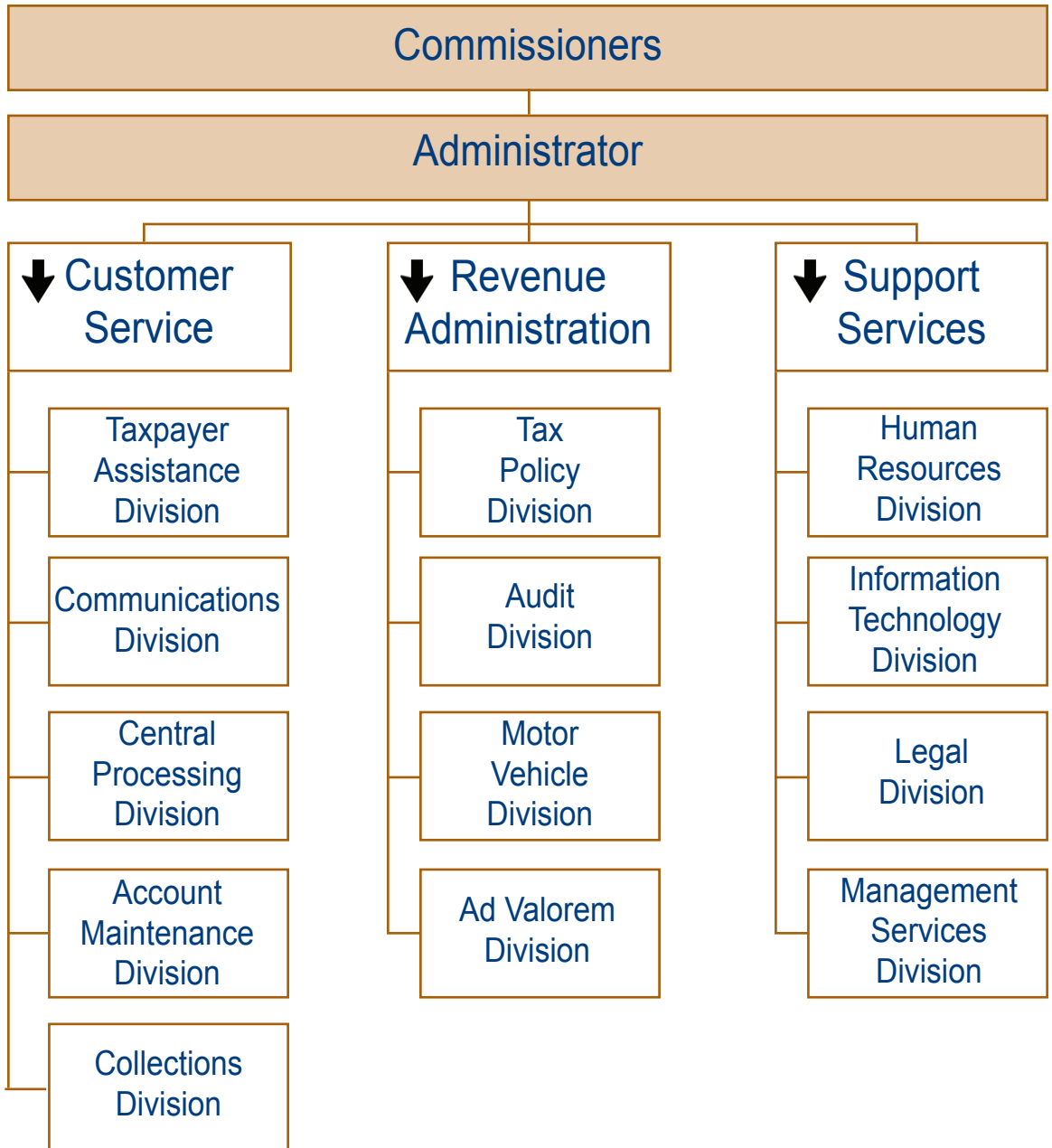
The Tax Commission is comprised of three members (Chairman, Vice-Chairman, and Secretary-Member) who are appointed by the Governor with the advice and consent of the State Senate and serve terms of six years each.

It is the Commission's responsibility to supervise the administration and enforcement of state tax laws and the collection of a majority of all state-levied taxes and fees.

The Commission directs the collection and distribution of the tax and license sources under its administration and, by statute, is responsible for apportioning such tax revenues to the various state funds. In addition, the Oklahoma Tax Commission allocates directly to local units of government certain state-collected levies earmarked to counties, school districts and municipalities. On a contract basis with individual municipalities and counties, the Tax Commission is involved with the administration, collection and distribution of city/county sales and use taxes and county lodging taxes.



OKLAHOMA TAX COMMISSION ORGANIZATIONAL CHART





REVIEW OF 2008-2009 TAXES AND COLLECTIONS

Income Tax Gross Collections	\$ 3,715,023,639.59
-------------------------------------	----------------------------

Refunded	\$ 769,356,800.16
-----------------	--------------------------

Net Income Tax Revenue	\$ 2,945,666,839.43
-------------------------------	----------------------------

- **Individual Income Tax Net** **\$ 2,603,723,824.86**

- **Single:** From 1/2 of 1% of the first \$1,000 of taxable income and graduated up to \$246.50 plus 5.50% of income over \$8,700 for tax year 2008 (5.50% for tax year 2009).

- **Married:** From 1/2 of 1% of the first \$2,000 of taxable income and graduated up to \$395.00 plus 5.50% of income over \$15,000 for tax year 2008 (5.50% for tax year 2009).

Taxpayers whose filing status is Head of Household use Married rates.

The starting point to arrive at Oklahoma Taxable Income is Federal Adjusted Gross Income with certain specific exemptions.

Personal exemption: \$1,000 each.

	<u>Tax Year</u>	
	<u>2008</u>	<u>2009</u>
Standard deduction:		
Single	\$3,250	\$4,250
Married	6,500	8,500
Head of Household	4,875	6,375

- **Corporation Income Tax Net** **\$ 341,943,014.57**

Flat Rate: 6% of Oklahoma Taxable Income.



REVIEW OF 2008-2009 TAXES AND COLLECTIONS, CONTINUED

Gross Production Taxes	\$ 1,174,211,946.76
-------------------------------	----------------------------

• Severance Tax	\$ 1,158,639,144.86
------------------------	----------------------------

The severance tax is a variable rate tax based on the average monthly price per barrel of oil or average monthly price per mcf of gas as determined by the Oklahoma Tax Commission. For FY 2009, the rate for oil and gas was constant at 7%.

• Petroleum Excise Tax	\$ 15,572,801.90
-------------------------------	-------------------------

Oil and Gas Excise Tax: 0.095 of 1% of gross value.

Sales and Use Taxes	\$ 2,220,165,583.21
----------------------------	----------------------------

• State Sales Tax	\$ 2,015,216,791.35
--------------------------	----------------------------

Rate: 4.5% on the sale or rental of tangible personal property and from the furnishing of specific services.

• State Use Tax	\$ 204,948,791.86
------------------------	--------------------------

Rate: 4.5% on sales price of tangible personal property purchased out-of-state for use or consumption in Oklahoma.

City/County Sales and Use Tax and County Lodging Tax (Not included above)

Collected by the Tax Commission during the fiscal year were city sales taxes totaling **\$1,374,286,720.85** and county sales taxes totaling **\$285,364,566.15**. City use tax collections amounted to **\$102,077,401.31** and county use tax totaled **\$23,022,927.94**. County lodging taxes amounted to **\$975,889.54**.



REVIEW OF 2008-2009 TAXES AND COLLECTIONS, CONTINUED

Vehicle Taxes and Licenses	\$	588,626,857.51
-----------------------------------	-----------	-----------------------

• Aircraft Excise Tax	\$	4,156,234.06
• Aircraft License Fees		463,907.64
• Amateur Radio Operators License		0.00
• Drivers License Reinstatement Fees		2,750,000.00
• Motor License Agent Remittances		557,552,368.21
• Motor Vehicle Rental Tax		8,854,196.12
• Overweight Truck Permit		14,811,551.00
• Vehicle Inventory Stamps		38,600.48

Motor Fuel Taxes	\$	443,640,113.82
-------------------------	-----------	-----------------------

• Gasoline Tax	\$	305,202,959.77
----------------	----	----------------

Rate: 16 cents per gallon on all gasoline sold, withdrawn from storage for sale or other use, and any portion used in this state of gasoline imported in fuel tanks of vehicles used for commercial purposes.

• Special Fuel Tax	\$	39,179.53
• Diesel Tax	\$	114,051,431.20

Rate: 16 cents per gallon on special fuels and 13 cents per gallon on diesel used to propel vehicles on the highway, and any portion used in this state of such fuels imported in fuel tanks of vehicles used commercially.

• Special Fuel Decals	\$	215,823.01
-----------------------	----	------------

Rate: \$50 per year in lieu of use tax on L.P.G. used to propel automobiles, vans and pickup trucks not exceeding 1 ton capacity; \$100 for same using compressed or liquified natural gas; and \$150 for those exceeding 1 ton capacity.

• Motor Fuel Special Assessment Fee	\$	24,130,720.31
-------------------------------------	----	---------------

Rate: 1 cent per gallon on gasoline and diesel fuels. Monies used for the removal and/or replacement of leaking underground storage tanks and highway and road construction.



REVIEW OF 2008-2009 TAXES AND COLLECTIONS, CONTINUED

Cigarette and Tobacco Taxes and Licenses	\$	271,654,596.14
---	-----------	-----------------------

• Cigarette Tax	\$	182,677,459.25
------------------------	-----------	-----------------------

Cigarettes: \$1.03 per pack of 20.

• Cigarette License	\$	55,446.80
----------------------------	-----------	------------------

Retail:	\$ 30 for a 3 year permit.
Wholesale:	\$ 25 for a 1 year permit.
Distributing Agent:	\$100 for a 1 year permit.

• Tobacco Products Tax	\$	28,359,166.56
-------------------------------	-----------	----------------------

Little Cigars (cigarette size): 72 cents per pack of 20 (\$0.036 each).

Large Cigars (3 lbs. Per M or more): 12 cents each.

Smoking Tobacco: 80% of factory list price.

Chewing Tobacco: 60% of factory list price.

• Tobacco License	\$	675.00
--------------------------	-----------	---------------

A \$5 annual fee is required of all tobacco handlers.

• Tribal Cigarette/Tobacco Payments	\$	47,447,311.05
--	-----------	----------------------

Non-compacting tribally owned/licensed stores: 75% of cigarette/tobacco excise taxes imposed by the State.

Compacting tribally owned/licensed stores: Excise tax rates as provided by each Tribal/State compact.

• State/Tribal Compact Stamps	\$	13,114,537.48
--------------------------------------	-----------	----------------------

Roll: \$0.66500 per stamp.
Sheet: \$0.83175 per stamp.



REVIEW OF 2008-2009 TAXES AND COLLECTIONS, CONTINUED

Beverage Taxes and Licenses

\$ 91,339,291.92

• Alcoholic Beverage Tax

\$ 32,460,352.97

Distilled spirits:	\$ 1.47 per liter.
Light wines:	\$ 0.19 per liter.
Wine more than 14% alcohol:	\$ 0.37 per liter.
Sparkling wines:	\$ 0.55 per liter.
Strong beer:	\$12.50 per barrel.

• Beverage Tax

\$ 26,183,338.93

Beer 3.2% or less: \$11.25 per 31-gallon barrel.

• Beverage License (3.2% Beer)

\$ 904,929.31

Retail Manufacturer (Brew Pub):	\$650
Manufacturer:	\$500
Wholesale:	\$250

Retail (3 year permit):

On-premise draught:	\$500.00
On-premise cans and bottles only:	\$350.00
Off-premise cans and bottles only:	\$230.00

• Mixed Beverage Gross Receipts Tax

\$ 31,790,670.71

A tax at the rate of 13.5% is levied on the total gross receipts from the sale, preparation or service of mixed beverages; ice or nonalcoholic beverages to be mixed with alcoholic beverages; admission charges to mixed beverage establishments; and on the total retail value of complimentary or discounted mixed beverages.



REVIEW OF 2008-2009 TAXES AND COLLECTIONS, CONTINUED

Estate Tax	\$	43,864,213.57
-------------------	-----------	----------------------

Estates passing to surviving spouse are exempt except for any credit from the federal government which must be paid to the State. The exemption for heirs was \$2,000,000 in calendar year 2008. Heirs are taxed at rates of one-half of one percent on the first \$10,000 and graduate up to 10% for net estates over \$10 million.

Franchise Tax and Registered Agent Fees	\$	49,256,040.31
--	-----------	----------------------

- **Franchise Tax**

Rate: \$1.25 for each \$1,000 or fraction thereof used or invested in an Oklahoma business enterprise.

Maximum Levy: \$20,000.

Minimum Levy: \$250.

- **Registered Agent Fee**

Foreign corporations are assessed \$100 per year for domestic representation by the Secretary of State.

Rural Electric Cooperative Tax and License	\$	31,987,779.90
---	-----------	----------------------

- **Tax:** 2% of gross receipts from the sale of electric service. **\$** **31,983,843.70**

- **License:** \$1.00 for each 100 customers or fraction thereof. **\$** **3,936.20**

Realty Transfer Tax	\$	12,849,062.08
----------------------------	-----------	----------------------

- **Documentary Stamps:** \$0.75 for each \$500 or fraction thereof in excess of \$100 of the value of real estate transferred by a proper conveyance instrument.



REVIEW OF 2008-2009 TAXES AND COLLECTIONS, CONTINUED

Miscellaneous Taxes, Fees, Licenses

and Special Accounts.....\$ **140,546,455.71**

• Admission Fees	\$	0.00
• Bingo Tax		194,364.14
• Charity Games Tax		50,314.49
• Coin-Operated Device Decals/Distributor Permits.....		3,225,215.96
• Computer Enhancement Fund.....		296,399.70
• Controlled Dangerous Substance Tax Stamps		150.00
• Driving Record Fee.....		848,268.00
• Energy Resources Assessment.....		16,500,801.70
• Farm Implement Tax Stamps		7,981.76
• Fireworks Licenses		48,980.00
• Freight Car Tax		707,693.54
• Group Self-Insurance Premium Tax.....		2,431.51
• Horse Track Gaming.....		13,771,549.67
• Income Tax Check-Offs		217,905.11
• Individual Self-Insurance Premium Tax		8,912.90
• Marginal Well Fee		598,837.90
• Multiple Injury Trust Fund		23,244,680.59
• Occupational Health and Safety Tax.....		2,540,668.24
• Organ Donor Program		150,291.54
• OTC Reimbursements		28,984,521.18
• Pari-Mutuel Tax.....		1,629,873.58



REVIEW OF 2008-2009 TAXES AND COLLECTIONS, CONTINUED

Miscellaneous Taxes, Fees, Licenses and Special Accounts • Continued

• Pick Six/Seven Wager Tax.....	17,895.56
• Printing and Revolving Fund.....	1,098,654.36
• Public Service Penalties	1,436.00
• Sales Tax Permits	621,103.08
• Sales Tax Vendors List	1,650.00
• Service Charge Fee.....	64,922.81
• Tax Security Fund	962,379.31
• Telephone Surcharge.....	888,794.51
• Tourism Gross Receipts Tax	54,595.23
• Transport and Reclaimer License Fees	26,544.69
• Unclassified Receipts	964,692.30
• Warrant Intercept Account	29,661,605.67
• Warrant Release Filing Fee	49,308.24
• Waste Tire Recycling Fee.....	5,527,346.70
• Workers Compensation Insurance Premium Tax	7,575,685.74

Grand Total Collections*\$8,783,165,580.52

* City/county sales and use taxes and county lodging taxes are not included.

Note: A Voluntary Compliance Initiative was offered from Sept. 15, 2008 through Nov. 14, 2008. Taxpayers could settle their debts with full waiver of penalty, interest, and other collection fees. Tax types included were gasoline and diesel taxes, franchise tax, gross production and petroleum excise tax, personal and corporate income tax, bank “in lieu” tax, withholding taxes, sales and use tax, and mixed beverage taxes.



COMPARATIVE STATEMENT OF ALL TAX COLLECTIONS OF THE PAST TWO YEARS

	Fiscal Year 2008-2009	Fiscal Year 2007-2008
Admission Fees	\$ 0.00	\$ 0.00
Aircraft Excise Tax	4,156,234.06	4,743,358.04
Aircraft License Fees	463,907.64	324,056.60
Alcoholic Beverage Tax	32,460,352.97	31,210,006.85
Amateur Radio Operators License	0.00	22.50
Beverage License	904,929.31	1,099,560.60
Beverage Tax	26,183,338.93	25,344,796.15
Bingo Tax	194,364.14	488,079.48
Charity Games Tax	50,314.49	70,292.47
Cigarette License	55,446.80	62,487.59
Cigarette Tax	182,677,459.25	183,747,413.18
Coin-Operated Device Decals/Distr. Permits	3,225,215.96	3,354,780.30
Computer Enhancement Fund	296,399.70	N.A.
Controlled Dangerous Substance Tax Stamps	150.00	200.00
Diesel Fuel Tax	114,051,431.20	128,724,318.08
Documentary Stamp Tax	12,849,062.08	16,158,732.39
Drivers License Reinstatement Fee	2,750,000.00	3,000,000.00
Drivers Record Fee	848,268.00	977,050.00
Energy Resources Assessment	16,500,801.70	17,860,542.23
Estate Tax	43,864,213.57	61,346,283.01
Farm Implement Tax Stamps	7,981.76	8,240.45
Fireworks License	48,980.00	46,215.00
Franchise Tax	49,256,040.31	49,368,021.18



COMPARATIVE STATEMENT OF ALL TAX COLLECTIONS OF THE PAST TWO YEARS, CONTINUED

	Fiscal Year 2008-2009	Fiscal Year 2007-2008
Freight Car Tax	\$ 707,693.54	\$ 677,786.24
Gasoline Tax	305,202,959.77	287,351,081.20
Group Self-Insurance Premium Tax	2,431.51	70.30
Horse Track Gaming	13,771,549.67	10,569,988.17
Income Tax - Individual	3,250,058,797.20	3,402,323,943.24
Income Tax - Corporate	464,964,842.39	488,231,057.00
Income Tax - Check-Offs	217,905.11	140,919.00
Individual Self-Insurance Premium Tax	8,912.90	26,216.95
Marginal Well Fee	598,837.90	411,632.70
Mixed Beverage Gross Receipts Tax	31,790,670.71	30,161,461.36
Motor Fuel Special Assessment Fee	24,130,720.31	39,029,176.18
Motor License Agent Remittances	557,552,368.21	607,530,198.70
Motor Vehicle Rental Tax	8,854,196.12	9,529,152.68
Occupational Health & Safety Tax	2,540,668.24	2,348,801.29
Oklahoma Tax Commission Reimbursements	28,984,521.18	2,190,975.09
Organ Donor Program	150,291.54	164,821.98
Overweight Truck Permits	14,811,551.00	12,868,379.50
Pari-Mutuel Tax	1,629,873.58	1,772,723.35
Petroleum Excise Tax	15,572,801.90	16,669,328.98
Pick Six/Seven Wager	17,895.56	32,216.67
Rural Electric Co-op License	3,936.20	5,183.89



COMPARATIVE STATEMENT OF ALL TAX COLLECTIONS OF THE PAST TWO YEARS, CONTINUED

	Fiscal Year 2008-2009	Fiscal Year 2007-2008
Rural Electric Co-op Tax.....	\$ 31,983,843.70	\$ 29,823,119.54
Sales Tax.....	2,015,216,791.35	1,972,101,510.49
Sales Tax Permits.....	621,103.08	724,420.76
Sales Tax Vendors List.....	1,650.00	1,950.00
Service Charge Fee.....	64,922.81	68,520.67
Severance Tax.....	1,158,639,144.86	1,249,985,305.22
Special Fuel Decals.....	215,823.01	197,511.27
Special Fuel Tax.....	39,179.53	18,431.52
State/Tribal Compact Stamps.....	13,114,537.48	N.A.
Telephone Surcharge.....	888,794.51	920,398.58
Tobacco Products License.....	675.00	490.00
Tobacco Products Tax.....	28,359,166.56	27,222,030.09
Tourism Gross Receipts Tax.....	54,595.23	741,705.55
Transport & Reclaimer Permits.....	26,544.69	69,790.85
Tribal Cigarette/Tobacco Payments.....	47,447,311.05	42,318,840.07
Use Tax.....	204,948,791.86	179,998,224.29
Vehicle Revenue Tax Stamps.....	38,600.48	46,778.80
Warrant Release Filing Fee.....	49,308.24	67,700.75
Waste Tire Recycling Fee.....	5,527,346.70	5,835,867.52
Workers Comp. Insurance Premium Tax.....	7,575,685.74	7,609,786.36
Total Tax, License, Fee and Permit Collections	\$ 8,727,232,132.29	\$ 8,957,721,952.90



COMPARATIVE STATEMENT OF ALL TAX COLLECTIONS OF THE PAST TWO YEARS, CONTINUED

	Fiscal Year 2008-2009	Fiscal Year 2007-2008
Miscellaneous Accounts		
Multiple Injury Trust Fund	\$ 23,244,680.59	\$ 22,387,191.59
Printing & Revolving Fund	1,098,654.36	1,424,955.81
Public Service Penalties	1,436.00	11,438.00
Tax Security Fund	962,379.31	572,940.76
Unclassified Receipts	964,692.30	557,913.81
Warrant Intercept Account	29,661,605.67	26,304,887.18
Total Miscellaneous Collections	\$ 55,933,448.23	\$ 51,259,327.15
Grand Total Collections*		
	\$ 8,783,165,580.52	\$ 9,008,981,280.05

* City/county sales and use taxes and county lodging taxes are not included.

N.A. = Not Applicable



APPORTIONMENT OF STATUTORY REVENUES

	Fiscal Year 2008-2009	Fiscal Year 2007-2008
Ad Valorem Reimbursement Fund	\$ 28,803,958.07	\$ 31,406,474.89
Adaptive Grant Program/Mental Retardation Revolving Fund.....	28,386.00	26,517.00
Adoption Creates Families	1,575.00	1,650.00
Ag-N-Class Fund	6,336.00	6,312.00
Animal Friendly Revolving Fund.....	7,740.00	7,760.00
Attorney General Revolving Fund	280.00	280.00
Belle Maxine Hilliard Breast & Cervical Cancer Fund	902,632.47	822,835.79
Blind and Deaf Schools Fund	2,569.00	9,804.00
Boy Scouts of America	1,300.00	1,360.00
Breast Cancer Act Revolving Fund.....	46,311.02	35,990.00
Cancer Center Service Revolving Fund	6,334,172.74	5,775,567.68
Capital Improvement Program.....	10,518.00	6,518.00
Child Abuse Prevention Fund	1,520.00	900.00
Children’s Hospital Safe Kids Fund	100.00	40.00
Choose Life Assistance Revolving Fund	8,780.00	8,140.00
Circuit Engineering District Revolving Fund	250,564.67	249,517.52
Cities and Counties	22,391,602.66	22,445,735.33
Cities and Towns	34,298,277.90	33,769,132.05
Colleges and Universities	189,240.00	176,780.00
Color Oklahoma Revolving Fund.....	6,120.00	5,660.00
Commission on Marginally Producing Wells Fund ..	580,872.76	414,083.00
Common Education Technical Fund.....	47,372,298.56	47,372,298.58
Community-Based Substance Abuse Rev. Fund.....	428,600.00	539,000.00
Community Water Infra-Structure Dev. Rev. Fund ..	2,627,701.44	2,627,701.42
Computer Enhancement Fund	296,399.70	N.A.



APPORTIONMENT OF STATUTORY REVENUES, CONTINUED

	Fiscal Year 2008-2009	Fiscal Year 2007-2008
Conservation Commission Infra-Structure Revolving Fund.....	\$ 2,627,701.44	\$ 2,627,701.42
Corporation Commission Fund.....	1,000,000.00	1,000,000.00
Corporation Commission Plugging Fund.....	1,585,548.88	1,721,193.91
Corporation Commission Storage Tank Regulation Revolving Fund.....	0.00	1,000,000.00
Counties for Ad Valorem Distribution.....	2,291.00	4,105.50
Counties for County Clerks.....	76,206.00	66,534.00
Counties for County Government.....	5,014,282.39	4,982,025.70
Counties for EMT's.....	3,960.00	3,840.00
Counties for Roads.....	236,340,184.17	239,038,977.94
County Bridge and Road Fund.....	26,543,205.65	26,331,130.17
County Fair Enhancement Fund.....	248.00	1,145.00
County Improvement Road and Bridge Rev. Fund..	54,747,908.32	29,940,734.42
County Road Fund.....	15,664,156.71	15,568,242.02
County Road Improvement Revolving Fund.....	21,921,058.19	21,799,303.29
Court Appointed Special Advocates.....	21,562.00	10,765.00
Dept. of Environmental Quality Revolving Fund.....	2,632,859.12	2,650,408.54
Dept. of Public Safety Revolving Fund.....	598,796.93	595,636.77
Dept. of Public Safety Patrol Vehicle Fund.....	850,000.00	850,000.00
DPS Imaging System Revolving Fund.....	5,228,253.75	4,990,453.00
Drug Abuse Education Revolving Fund.....	150.00	200.00
Education Reform Revolving Fund.....	509,422,298.91	522,435,459.76
Energy Resources Revolving Fund.....	16,476,801.70	17,836,542.23
Environmental Education Revolving Fund.....	12,960.00	13,728.00
Firemans Museum & Building Memorial Fund.....	68,880.00	68,680.00



APPORTIONMENT OF STATUTORY REVENUES, CONTINUED

	Fiscal Year 2008-2009	Fiscal Year 2007-2008
4-H Club	\$ 580.00	\$ 620.00
General Revenue Fund	5,255,374,750.99	5,621,324,972.59
Global War on Terrorism.....	5,500.00	N.A.
Health Employee & Economy Improvement.....	45,222,963.90	41,234,132.38
Heartland Scholarship Fund.....	1,620.00	2,240.00
High Priority State Bridge Revolving Fund	5,876,106.70	5,599,396.14
Higher Education Capital Fund.....	47,372,298.56	47,372,298.58
Higher Education Revolving Fund.....	328.90	342.70
Historical Society Revolving Fund.....	740.00	860.00
Indigent Health Care Revolving Fund.....	26,488.00	14,719.00
Individual Self-Insur. Guaranty Fund	8,738.05	26,174.95
Interstate Oil Compact Fund.....	1,028,387.28	1,116,271.88
Jr. Livestock Auction Scholarship Fund	361.00	2,248.00
Lions Club Service Foundation.....	250.00	280.00
March of Dimes	320.00	N.A.
Mental Health and Substance Abuse Fund	5,428,409.33	4,950,773.39
Motor Vehicle Drivers Education Fund	900,000.00	900,000.00
Multiple Injury Trust Fund	20,400,825.68	19,983,322.67
NASCAR Racing Plates	3,693.80	4,627.60
National Stock Car Association	321.20	402.40
OKC Bombing Memorial Fund.....	96.00	687.00
Okla. Dept. of Career & Tech. Education Ag. Rev. Fund	860.00	740.00
Oklahoma Aeronautics Revolving Fund	4,661,687.69	5,141,167.52
Oklahoma Building Bonds Sinking Fund	40,412,872.31	40,990,503.44
Oklahoma Capitol and Centennial Comm. Rev. Fund	1,160.00	1,820.00



APPORTIONMENT OF STATUTORY REVENUES, CONTINUED

	Fiscal Year 2008-2009	Fiscal Year 2007-2008
Oklahoma Common Schools.....	\$ 1,621.00	\$ 4,045.00
Oklahoma Emergency Response System Stabilization and Improvement Rev. Fund.....	1,058,699.35	N.A.
Oklahoma Health Care Authority	54,082,610.11	49,311,279.50
Oklahoma Higher Learning Access Trust	0.00	1,268,398.57
Oklahoma Law Enforcement Retirement Fund	7,658,174.56	8,337,953.65
Oklahoma Leukemia and Lymphoma Rev. Fund.....	13,334.00	1,830.00
Oklahoma Pet Over-Population Fund.....	28,823.02	20,954.00
Oklahoma Road and Highway Maintenance	2,199.00	5,389.00
Oklahoma Silver Haired Legislature and Alumni Association Program.....	1,762.00	1,138.00
Oklahoma Student Aid Revolving Fund.....	47,372,298.56	47,372,298.58
Oklahoma Tax Commission Fund.....	23,524,014.27 (a)	21,829,062.62 (b)
Oklahoma Tax Commission Reimbursement Fund	33,008,504.44	7,069,923.34
Oklahoma Teachers Retirement System	253,558,505.76	263,088,314.99
Oklahoma Tourism & Passenger Rail Rev. Fund ...	2,850,000.00	2,850,000.00
Oklahoma Tourism Capital Improvement Rev. Fund	12,851,376.11	12,437,094.99
Oklahoma Tourism Promotion Revolving Fund	2,857.51	650,976.24
Oklahoma Tourism Revolving Fund.....	7,228,899.06	6,995,865.93
Organ Donor Revolving Fund	148,829.89	163,293.31
OSU Osteopathic Medicine Revolving Fund	6,334,172.74	5,775,567.68
Participating Tribes	19,305,618.47	18,377,286.23
Patriot License.....	8,100.00	8,040.00
Petroleum Storage Tank Indemnity Fund	20,629,385.93	22,375,789.80
Public Employees Safety Fund.....	1,411,987.31	1,198,900.93
Public Transit Revolving Fund.....	3,850,000.00	3,850,000.00



APPORTIONMENT OF STATUTORY REVENUES, CONTINUED

	Fiscal Year 2008-2009	Fiscal Year 2007-2008
Qualified Aircraft Mfr. Ad Valorem Rebate	\$ 310,802.00	\$ 483,067.00
Quarter Horse Revolving Fund.....	2,840.00	N.A.
Railroad Maintenance Revolving Fund.....	707,693.54	676,249.74
Rebuild Okla. Access & Driver Safety Fund	155,000,000.00	137,500,000.00
Retirement of Capitol Dome Debt.....	2,921.00	3,635.00
Returned to Counties - Admission Fees	0.00	0.00
Returned to Counties - Aircraft Mfg. Fees	750.00	750.00
School Districts.....	329,844,602.62	335,408,874.62
Special Occupational Health and Safety Fund	2,531,793.11	2,314,986.71
Special Prog. Assis. Rev. Fund Realtors License....	11,480.00	N.A.
State Transportation Fund	201,819,865.85	191,494,952.93
Support Oklahoma Medicaid Program	1,992.00	6,254.00
Support Oklahoma National Guard	19,069.00	14,109.00
Support Our Troops Supporters	2,950.00	N.A.
Support Program for Regional Food Banks.....	34,192.00	N.A.
Telecommunications for Hearing Impaired Revolving Fund.....	888,730.91	919,744.86
Tobacco Prevention & Cessation Revolving Fund...	1,352,382.95	1,233,274.10
Tourism and Recreation Capital Expenditure Revolving Fund.....	2,627,701.44	2,627,701.42
Tourism Department Rev. Fund - Route 66	4,860.00	4,500.00
Tourism Department Rev. Fund - State Parks	5,681.00	5,267.00
Trauma Care Assistance Revolving Fund	17,791,866.56	17,156,758.20
Tribal Trust Account 1695T.....	14,832,415.35	13,711,880.48
Tulsa Reconciliation Education & Scholarship Fund	6.00	1,558.00
Turnpike Authority Trust Fund	41,060,812.42	42,022,181.47



APPORTIONMENT OF STATUTORY REVENUES, CONTINUED

	Fiscal Year 2008-2009	Fiscal Year 2007-2008
U.S. Olympic Committee	\$ 3,864.00	\$ 4,048.00
Urban Forest & Beauty Revolving Fund	2,180.00	1,880.00
Vocational-Technical Fund.....	706,322.52	599,793.19
Waste Tire Recycling Indemnity Fund	5,076,165.27	5,363,418.39
Weigh Station Improvement Revolving Fund	6,000,000.00	N.A.
Wildlife Conservation Fund.....	164,573.09	179,644.39
Wildlife Diversity Fund	133,793.07	144,151.00
Workers Compensation Fraud Unit Fund	705,993.62	599,450.49
Total Apportionment.....	\$ 7,748,746,600.95	\$ 8,053,386,996.52

(a) Includes \$17,908,414.49 apportioned to O.T.C. Fund from city/county sales/use and county lodging tax retention fees.

(b) Includes \$17,372,119.30 apportioned to O.T.C. Fund from city/county sales/use and county lodging tax retention fees.

N.A. = Not Applicable



FISCAL YEAR 2008-2009

REVENUE AND APPORTIONMENT

WHERE IT CAME FROM

Admission Fees	\$	0.00
Aircraft Excise Tax	\$	4,156,234.06
Aircraft License	\$	463,907.64
Balance, July 1, 2008		(765.18)
Cancelled Vouchers.....		1,740.00
Alcoholic Beverage Tax	\$	32,460,352.97
Amateur Radio		
Operators License	\$	0.00
Transfer		187.55

WHERE IT WENT

Cities and Towns.....	\$	0.00
County Government.....		0.00
Oklahoma Aeronautics		
Revolving Fund	\$	4,144,114.88
Refunded		12,119.18
Counties-Aircraft Mfg. Fees	\$	750.00
General Revenue Fund		13,219.12
Oklahoma Aeronautics		
Revolving Fund		427,417.48
Refunded		23,495.86
Cities and Towns.....	\$	10,420,504.43
General Revenue Fund		20,841,008.86
Oklahoma Tax Comm. Fund ..		966,850.95
Refunded		231,988.73
General Revenue Fund	\$	187.55



FISCAL YEAR 2008-2009

REVENUE AND APPORTIONMENT, CONTINUED

WHERE IT CAME FROM	WHERE IT WENT
Beverage License\$ 904,929.31 Cancelled Vouchers 1,630.00	Community-Based Substance Abuse Revolving Fund \$ 428,600.00 General Revenue Fund 472,220.05 Refunded 5,739.26
Beverage Tax\$ 26,183,338.93	General Revenue Fund \$ 26,183,338.93
Bingo Tax\$ 194,364.14	General Revenue Fund \$ 194,364.14
Charity Games Tax\$ 50,314.49	General Revenue Fund \$ 50,314.49
Cigarette License\$ 55,446.80	General Revenue Fund \$ 55,326.80 Refunded 120.00
Cigarette Tax: Original Rate Collections ..\$ 40,904,447.65 Original Rate Trans/Audit Adjustment..... (459,195.98) New Rate Collections 142,268,379.16 New Rate Adjustments (36,171.58)	Belle Maxine Hilliard Breast and Cervical Cancer Fund.....\$ 625,326.15 Cancer Center Service Revolving Fund..... 4,391,494.80 Cities and Counties 20,209,403.18 Education Reform Rev. Fund .. 2,941,875.15 General Revenue Fund 23,932,936.02 Health Employee and Economy Improvement Fund 31,351,577.70



FISCAL YEAR 2008-2009

REVENUE AND APPORTIONMENT, CONTINUED

WHERE IT CAME FROM	WHERE IT WENT
Cigarette Tax - continued...	Mental Health and Substance Abuse Fund 3,766,168.67
	Oklahoma Building Bonds Sinking Fund..... 40,412,872.31
	Oklahoma Emergency Response System Stabilization & Improvement Revolving Fund 544,897.48
	Oklahoma Health Care Authority..... 37,491,143.18
	OSU Osteopathic Medicine Revolving Fund..... 4,391,494.80
	Teachers Retirement System Fund 1,421,195.73
	Tobacco Prevention and Cessation Revolving Fund... 937,989.18
	Trauma Care Assistance Revolving Fund..... 10,114,070.45
	Refunded 145,014.45
Coin-Operated Device Decals/ Distributor Permits\$ 3,225,215.96	General Revenue Fund \$ 3,219,719.96
Cancelled Vouchers 21.00	Refunded 5,517.00
Computer Enhancement Fund.....\$ 296,399.70	Computer Enhancement Fund..... \$ 296,399.70



FISCAL YEAR 2008-2009

REVENUE AND APPORTIONMENT, CONTINUED

WHERE IT CAME FROM		WHERE IT WENT	
Controlled Dangerous Substance Tax	\$ 150.00	Drug Abuse Education Revolving Fund	\$ 150.00
County Lodging Tax	\$ 975,889.54	#1695B to Counties	\$ 964,025.86
Interest Earned	1,534.19	Oklahoma Tax Comm. Fund ..	9,737.64
		Interest to Counties.....	1,534.19
		Refunded	2,126.04
Diesel Fuel Excise Tax	\$ 114,051,431.20	Counties for Roads	\$ 29,345,610.67
Cancelled Vouchers.....	2,365.13	County Bridge & Road Fund ..	3,735,083.59
Transfer	(9,000,000.00)	County Bridge and Road Fund (Resolution).....	252,981.44
		High Priority State Bridge Revolving Fund.....	1,352,022.45
		Participating Tribes	4,630,419.97
		State Transportation Fund	63,582,103.68
		Refunded	2,155,574.53
Documentary Stamp Tax	\$ 12,849,062.08	General Revenue Fund	\$ 12,822,244.34
Cancelled Vouchers.....	125.41	Refunded	26,943.15
Driving Record Fee	\$ 848,268.00	General Revenue Fund	\$ 848,268.00
Energy Resources Assessment	\$ 16,500,801.70	Energy Resources Revolving Fund.....	\$ 16,476,801.70
		Oklahoma Tax Comm. Fund ...	24,000.00
Estate Tax	\$ 43,864,213.57	General Revenue Fund	\$ 39,562,388.39
Cancelled Vouchers.....	2,467.89	Refunded	4,304,293.07
Farm Implement Tax Stamps	\$ 7,981.76	General Revenue Fund	\$ 7,981.76



FISCAL YEAR 2008-2009

REVENUE AND APPORTIONMENT, CONTINUED

WHERE IT CAME FROM	WHERE IT WENT
Fireworks License\$ 48,980.00	General Revenue Fund \$ 48,980.00
Franchise Tax\$ 49,256,040.31	General Revenue Fund \$ 47,459,805.56
Cancelled Vouchers..... 304,672.59	Refunded 2,100,907.34
Freight Car Tax\$ 707,693.54	Railroad Maint. Rev. Fund \$ 707,693.54
Gasoline Tax\$ 305,202,959.77	Circuit Engineering District
Cancelled Vouchers..... 19,736.04	Revolving Fund \$ 250,564.67
Transfer (7,514,615.13)	Cities and Towns..... 5,220,097.23
	Counties for Roads 83,032,261.57
	County Bridge & Road Fund... 7,308,136.09
	County Bridge and
	Road Fund (Resolution)..... 586,735.37
	General Revenue Fund 1,269,921.98
	High Priority State Bridge
	Revolving Fund..... 4,524,084.25
	Oklahoma Aero. Rev. Fund..... 90,155.33
	Participating Tribes 13,264,178.27
	Public Transit Revolving Fund 850,000.00
	State Transportation Fund 136,452,570.36
	Tourism & Passenger Rail
	Revolving Fund 850,000.00
	Turnpike Authority Trust Fund 41,060,812.42
	Refunded 2,948,563.14
Group Self-Insurance	
Premium Tax\$ 2,431.51	Reserve* \$ 38,905.39
Balance, July 1, 2008 36,473.88	



FISCAL YEAR 2008-2009

REVENUE AND APPORTIONMENT, CONTINUED

WHERE IT CAME FROM

Horsetrack Gaming	\$ 13,771,549.67
Income Tax - Corporate.....	\$ 464,964,842.39
Income Tax - Individual	\$3,250,058,797.20
Transfer	2,950.36

WHERE IT WENT

Education Reform Rev. Fund...	\$ 12,118,963.70
General Revenue Fund	1,652,585.97
Ad Valorem Reim. Fund.....	\$ 3,427,615.56
Educ. Reform Revolving Fund	56,555,656.19
General Revenue Fund	265,640,203.29
Teachers Retirement Fund.....	17,138,077.62
Refunded Net of Cancelled Vouchers	122,203,289.73
Ad Valorem Reim. Fund.....	\$ 25,376,342.51
Education Reform Rev. Fund	211,638,696.38
General Revenue Fund	2,013,582,096.83
Okla. Tourism & Passenger Rail Revolving Fund.....	2,000,000.00
Public Transit Rev. Fund	3,000,000.00
Qualified Aircraft Manufacturer Ad Valorem Rebate.....	155,401.00
Rebuild Okla. Access & Driver Safety Fund.....	155,000,000.00
Teachers Retirement Fund.....	126,881,712.47
Refunded Net of Cancelled Vouchers	628,312,701.87
Quality Jobs Program Incentive Leverage Funds	7,097,213.00
Transfer to 1695Q	61,617,080.62
Transfer to 1695W	15,400,502.88
Income Tax Check-Offs	\$ 217,905.11
Blind & Deaf Schools Fund...	\$ 2,569.00
Bombing Memorial Fund.....	96.00



FISCAL YEAR 2008-2009

REVENUE AND APPORTIONMENT, CONTINUED

WHERE IT CAME FROM		WHERE IT WENT	
Income Tax Check-Offs - continued...		Breast Cancer Fund.....	31,111.02
		Capital Improvement Program	10,518.00
		County Fair Enhancement Fund..	248.00
		Court Appointed Special Advocates	21,562.00
		Indigent Health Care	26,488.00
		Jr. Livestock Auction	
		Scholarship Fund.....	361.00
		Oklahoma Common Schools..	1,621.00
		Okla. Leukemia & Lymphoma	
		Revolving Fund.....	13,334.00
		Okla. Pet Overpopulation Fund..	24,503.02
		Okla. Road & Highway	
		Maintenance Fund	2,199.00
		Okla. Silver-Haired Legislature	
		& Alumni Assoc. Program ..	1,762.00
		Retirement of Capitol Dome Debt	2,921.00
		Support Okla. Medicaid Program..	1,992.00
		Support Okla. Natl. Guard.....	19,069.00
		Support Program for Regional	
		Food Banks.....	34,192.00
		Tulsa Reconciliation Educ. &	
		Scholarship Fund.....	6.00
		Wildlife Diversity Fund	23,353.07
Individual Self-Insurance		Individual Self-Insured	
Premium Tax	\$ 8,912.90	Guaranty Fund.....	\$ 8,738.05
		Refunded	174.85
Marginal Well Fee	\$ 598,837.90	Commission on Marginal	
		Producing Wells	\$ 580,872.76
		Oklahoma Tax Comm. Fund ...	17,965.14



FISCAL YEAR 2008-2009

REVENUE AND APPORTIONMENT, CONTINUED

WHERE IT CAME FROM

WHERE IT WENT

Mixed Beverage Gross

Receipts Tax.....	\$ 31,790,670.71
Cancelled Vouchers.....	1,266.27

General Revenue Fund	\$ 31,652,622.71
Refunded	139,314.27

Motor Vehicle Collections:

Motor Lic. Agent Remits ...	\$ 557,552,368.21
Motor Vehicle Rental Tax....	8,854,196.12
Drivers Lic. Reinstatement Fee	2,750,000.00
Overweight Truck Permits ..	14,811,551.00
Cancelled Vouchers	10,345.88

Cities and Towns.....	\$ 18,657,676.24
Counties for Roads	43,842,116.40
County Government.....	5,014,282.39
County Improvement	
Road & Bridge Rev. Fund ..	54,747,908.32
County Road Fund.....	15,664,156.71
County Road Improvement	
Revolving Fund	21,921,058.19
DPS Imaging System	
Revolving Fund	5,228,253.75
DPS Patrol Vehicle Fund	850,000.00
General Revenue Fund	175,838,593.21
M.V. Driver Education Fund ...	900,000.00
Oklahoma Law Enforcement	
Retirement Fund	7,652,354.56
Oklahoma Tax Comm. Fund ...	3,364,045.53
OTC Reimbursement Fund.....	3,712,541.09
Public Safety Revolving Fund	597,350.00
School Districts	219,315,443.74
State Transportation Fund.....	1,700,588.64
Trauma Care Assistance	
Revolving Fund	3,474,323.50
Wildlife Conservation Fund	164,573.09
Refunded	500,629.34
Transfer.....	832,566.51



FISCAL YEAR 2008-2009

REVENUE AND APPORTIONMENT, CONTINUED

WHERE IT CAME FROM

WHERE IT WENT

Motor Fuel Special

Assessment Fee	\$ 24,130,720.31
Cancelled Vouchers	291.51
Transfer	7,514,615.13

Corporation Comm. Fund	\$ 1,000,000.00
Corporation Comm. Storage Tank Regulation Rev. Fund	0.00
Dept. of Environmental Quality Revolving Fund	2,315,598.78
Payments to Tribes	1,411,020.23
Petroleum Storage Tank Indemnity Fund	20,629,385.93
State Transportation Fund	0.00
Weigh Station Improvement Revolving Fund	6,000,000.00
Refunded	289,622.01

Multiple Injury Trust Fund ...	\$ 23,244,680.59
Cancelled Vouchers	1,796.94

Multiple Injury Trust Fund	\$ 20,400,825.68
Pub. Employees Safety Fund ...	1,411,987.31
Vocational-Technical Fund	705,993.62
Workers Compensation Fraud Unit Fund	705,993.62
Refunded	21,677.30

NASCAR License Plates

Transfer	\$ 16,060.00
----------------	--------------

General Revenue Fund	\$ 1,970.00
NASCAR Racing Plates	3,693.80
National Stock Car Association	321.20
OTC Reimbursement Fund	10,075.00



FISCAL YEAR 2008-2009

REVENUE AND APPORTIONMENT, CONTINUED

WHERE IT CAME FROM		WHERE IT WENT	
Occupational Health and Safety Tax\$	2,540,668.24	Special Occupational Health and Safety Fund..... \$	2,531,793.11
Cancelled Vouchers	276.94	Refunded	9,152.07
Oklahoma Tax Commission Reimbursement	\$ 28,984,521.18	OTC Reimbursement Fund... \$	29,076,589.35
Transfer	(92,168.01)	Refunded	99.84
Organ Donor Program\$	150,291.54	Department of Public Safety \$	1,446.93
		Oklahoma Tax Comm. Fund ...	14.72
		Organ Donor Revolving Fund	148,829.89
Pari-Mutuel Tax	\$ 1,629,873.58	General Revenue Fund	\$ 1,629,873.58
Petroleum Excise Tax - Gas.. \$	10,291,863.20	Corp. Comm. Plugging Fund \$	1,064,534.07
Cancelled Vouchers.....	390.48	General Revenue Fund	8,330,756.79
		Interstate Oil Compact Fund...	689,821.71
		Refunded	207,141.11
Petroleum Excise Tax - Oil.. \$	5,280,938.70	Corp. Comm. Plugging Fund \$	521,014.81
Cancelled Vouchers.....	303.50	General Revenue Fund	4,090,208.71
		Interstate Oil Compact Fund...	338,565.57
		Refunded	331,453.11
Pick Six/Seven Wager	\$ 17,895.56	General Revenue Fund	\$ 17,895.56
Printing & Revolving Fund \$	1,098,654.36	Oklahoma Tax Comm. Fund \$	1,052,005.27
		Refunded	29,168.59
		Transfer.....	17,480.50



FISCAL YEAR 2008-2009

REVENUE AND APPORTIONMENT, CONTINUED

WHERE IT CAME FROM		WHERE IT WENT	
Public Service Penalties	\$ 1,436.00	Counties for Ad Valorem Dist.	2,291.00
Balance, July 1, 2008	3,227.00	General Revenue Fund	2,291.00
		Refunded	81.00
Rural Electric Co-op License \$	3,936.20	General Revenue Fund	\$ 3,936.20
Rural Electric Co-op Tax ... \$	31,983,843.70	General Revenue Fund	\$ 1,601,104.11
		School Districts	30,420,974.38
		Reserve*	(38,234.79)
Sales Tax - State	\$2,015,216,791.35	Educ. Reform Rev. Fund.....	\$206,020,423.44
Cancelled Vouchers.....	612,899.07	General Revenue Fund	1,649,796,499.37
Interest Earned.....	3,167,234.49	Oklahoma Tourism Rev. Fund	6,594,229.22
		Okla. Tourism Capital Improvement Rev. Fund.....	11,723,074.18
		Qualified Aircraft Manufacturer Ad Valorem Rebate.....	155,401.00
		Teachers Retirement Fund.....	98,480,125.93
		Refunded	46,227,171.77
Sales Tax - City	\$1,374,286,720.85	#1695B to Cities & Towns..	\$ 1,360,496,213.66
Interest Earned.....	2,116,499.80	Oklahoma Tax Comm. Fund ...	13,790,507.19
		Interest to Cities and Towns....	2,116,499.80
Sales Tax - County	\$ 285,364,566.15	#1695B to Counties	\$282,510,920.38
Interest Earned.....	440,945.31	Oklahoma Tax Comm. Fund ...	2,853,645.77
		Interest to Counties.....	440,945.31



FISCAL YEAR 2008-2009

REVENUE AND APPORTIONMENT, CONTINUED

WHERE IT CAME FROM		WHERE IT WENT	
Sales Tax Permits	\$ 621,103.08	General Revenue Fund	\$ 618,448.08
Cancelled Vouchers.....	450.00	Refunded	3,105.00
Sales Tax Vendors List	\$ 1,650.00	Oklahoma Tax Comm. Fund \$	1,650.00
Service Charge Fee	\$ 64,922.81	Oklahoma Tax Comm. Fund \$	64,922.81
Severance Tax on Gas	\$ 777,030,819.56	Counties for Roads	\$ 54,477,941.61
Cancelled Vouchers.....	404,619.66	General Revenue Fund	598,340,774.37
		School Districts	54,477,941.61
		Refunded	70,138,781.63
Severance Tax on Oil	\$ 381,608,325.30	Common Education	
Cancelled Vouchers.....	315,733.49	Technical Fund.....	\$ 47,372,298.56
		Community Water Infra-Structure	
		Development Rev. Fund.....	2,627,701.44
		Conservation Commission	
		Infra-Structure Rev. Fund.....	2,627,701.44
		Counties for Roads	25,630,242.89
		County Bridge and Road Fund..	14,658,962.81
		General Revenue Fund	128,931,292.23
		Higher Educ. Capital Fund.....	47,372,298.56
		Oklahoma Student Aid	
		Revolving Fund	47,372,298.56
		School Districts	25,630,242.89
		Tourism and Recreation Capital	
		Expenditure Rev. Fund.....	2,627,701.44
		Refunded	34,734,855.97
		Reserve*	2,338,462.00



FISCAL YEAR 2008-2009

REVENUE AND APPORTIONMENT, CONTINUED

WHERE IT CAME FROM	WHERE IT WENT
Special Fuel Decals\$ 215,823.01	General Revenue Fund \$ 155,228.01
	State Transportation Fund 59,230.00
	Refunded 1,365.00
Special Fuel Tax\$ 39,179.53	Counties for Roads \$ 12,011.03
	County Bridge and Road Fund.. 1,223.99
	County Bridge and Road Fund (Resolution) 82.36
	General Revenue Fund 477.06
	State Transportation Fund 25,373.17
	Refunded 11.92
Special License Plates	
Transfer\$ 741,819.00	Adoption Creates Family..... \$ 1,575.00
	Ag-N-Class Fund 6,336.00
	Animal Friendly Rev. Fund..... 7,740.00
	Attorney General Rev. Fund .. 280.00
	Boy Scouts of America..... 1,300.00
	Breast Cancer Rev. Fund..... 15,200.00
	Child Abuse Prevention Fund 1,520.00
	Children's Hosp. Safe Kids Fund 100.00
	Choose Life Assist. Rev. Fund 8,780.00
	Colleges & Universities 189,240.00
	Color Oklahoma Rev. Fund.... 6,120.00
	Counties for EMT's 3,960.00
	Education Reform Rev. Fund 328.90
	Environmental Educ. Rev. Fund 12,960.00
	Firemans Museum and Building Memorial Fund 68,880.00
	4-H Club..... 580.00



FISCAL YEAR 2008-2009

REVENUE AND APPORTIONMENT, CONTINUED

WHERE IT CAME FROM

Special License Plates - continued ...

WHERE IT WENT

Global War on Terrorism	5,500.00
Heartland Scholarship Fund ..	1,620.00
Higher Education Rev. Fund..	328.90
Historical Society Rev. Fund..	740.00
Law Enforcement Retirement Fund	5,820.00
Lions Club Service Foundation	250.00
March of Dimes.....	320.00
Mental Retardation Rev. Fund	28,386.00
Oklahoma Capitol & Centennial Commission Fund.....	1,160.00
Okla. Dept. Career & Technology Education Ag. Rev. Fund ...	860.00
Okla. Pet Overpopulation Fund	4,320.00
Okla. Tax Comm. Reimb. Fund	209,299.00
Patriot License	8,100.00
Quarter Horse Revolving Fund	2,840.00
Spec. Prog. Assis. Rev. Fund Realtors License.....	11,480.00
Support Our Troops Supporters	2,950.00
Teachers Retirement Fund.....	5,591.30
Tourism Department Revolving Fund - Route 66	4,860.00
Tourism Department Revolving Fund - State Parks.....	5,681.00
U.S. Olympic Committee.....	3,864.00
Urban Forest & Beauty Rev. Fund	2,180.00
Vocational-Technical Fund.....	328.90
Wildlife Diversity Fund	110,440.00



FISCAL YEAR 2008-2009

REVENUE AND APPORTIONMENT, CONTINUED

WHERE IT CAME FROM

State/Tribal Compact Stamps \$ 13,114,537.48

Tax Security Fund.....\$ 962,379.31
 Balance, July 1, 2008 6,160,166.93
 Cancelled Vouchers..... 3,079.15

Telephone Surcharge\$ 888,794.51
 Cancelled Vouchers 267.41

Tobacco Products License \$ 675.00

WHERE IT WENT

Belle Maxine Hilliard Breast and Cervical Cancer Fund \$ 46,811.34
 Cancer Center Service Revolving Fund..... 327,679.11
 General Revenue Fund 6,127,339.65
 Health Employee & Econ. Improvement Fund..... 2,339,866.36
 Mental Health & Substance Abuse Fund..... 280,169.13
 Okla. Health Care Authority ... 2,798,896.54
 OSU Osteopathic Medicine Revolving Fund 327,679.11
 Tobacco Prevention & Cessation Revolving Fund 69,867.62
 Trauma Care Assist. Rev. Fund 795,792.12
 Refunded 436.50

Refunded \$ 650,046.34
 Reserve* 6,475,579.05

Telecommunications for Hearing Impaired Revolving Fund \$ 888,730.91
 Refunded 331.01

General Revenue Fund \$ 675.00



FISCAL YEAR 2008-2009

REVENUE AND APPORTIONMENT, CONTINUED

WHERE IT CAME FROM

Tobacco Products Tax\$ 28,359,166.56

WHERE IT WENT

Belle Maxine Hilliard Breast and Cervical Cancer Fund	\$ 67,522.41
Cancer Center Service Revolving Fund	474,191.01
Cities and Counties.....	2,182,199.48
Education Reform Rev. Fund	317,661.95
General Revenue Fund	15,101,566.37
Health Employee and Economy Improvement Fund.....	3,385,324.93
Mental Health and Substance Abuse Fund.....	406,668.68
Oklahoma Emergency Response System Stabilization & Improvement Revolving Fund	91,816.28
Okla. Health Care Authority ...	4,048,271.57
OSU Osteopathic Medicine Revolving Fund.....	474,191.01
Teachers Retirement Fund.....	153,459.87
Tobacco Prevention and Cessation Rev. Fund.....	101,283.52
Trauma Care Assist. Rev. Fund	1,059,132.80
Refunded	495,876.68



FISCAL YEAR 2008-2009

REVENUE AND APPORTIONMENT, CONTINUED

WHERE IT CAME FROM	WHERE IT WENT
Tourism Gross Receipts Tax \$ 54,595.23 Balance, July 1, 2008 15,520.92 Cancelled Vouchers 183.46	General Revenue Fund \$ 88.38 Oklahoma Tourism Promotion Revolving Fund 2,857.51 Refunded 4,349.60 Reserve* 63,004.12
Transport and Reclaimer Permits\$ 26,544.69	General Revenue Fund \$ 38,760.57 Refunded 180.00 Reserve* (12,395.88)
Tribal Cigarette/ Tobacco Payments\$ 47,447,311.05	Belle Maxine Hilliard Breast and Cervical Cancer Fund \$ 162,972.57 Cancer Center Service Revolving Fund 1,140,807.82 General Revenue Fund 8,260,153.87 Health Employee and Economy Improvement Fund..... 8,146,194.91 Mental Health and Substance Abuse Fund..... 975,402.85 Oklahoma Emergency Response System Stabilization & Improvement Revolving Fund 421,985.59 Okla. Health Care Authority ... 9,744,298.82 OSU Osteopathic Medicine Revolving Fund 1,140,807.82 Tobacco Prevention and Cessation Rev. Fund..... 243,242.63 Trauma Care Assist. Rev. Fund 2,348,547.69 Tribal Trust Account 1695T ... 14,832,415.35 Refunded 30,481.13



FISCAL YEAR 2008-2009

REVENUE AND APPORTIONMENT, CONTINUED

WHERE IT CAME FROM

Unclassified Receipts	\$ 964,692.30
Balance, July 1, 2008	616,062.95
Cancelled Vouchers.....	1,139.00

Use Tax - State	\$ 204,948,791.86
Interest Earned	355,744.91
Cancelled Vouchers.....	622,688.14
Transfer	319,849.27

Use Tax - City	\$ 102,077,401.31
Interest Earned	173,823.36

Use Tax - County	\$ 23,022,927.94
Interest Earned	38,947.74

Vehicle Revenue Tax	
Stamps	\$ 38,600.48

Warrant Intercept Account ..	\$ 29,661,605.67
-------------------------------------	------------------

WHERE IT WENT

General Revenue Fund	\$ 510,558.55
Refunded	4,797.96
Transfer.....	187.55
Reserve*	1,066,350.19

Educ. Reform Rev. Fund.....	\$ 19,828,693.20
General Revenue Fund	158,852,593.66
Oklahoma Tourism Rev. Fund	634,669.84
Oklahoma Tourism Capital Improvement Rev. Fund....	1,128,301.93
Teachers Retirement Fund....	9,478,342.84
Refunded	16,324,472.71

#1695U to Cities	\$ 100,754,890.47
Oklahoma Tax Comm. Fund ..	1,024,294.60
Interest to Cities	173,823.36
Transfer.....	298,216.24

#1695U to Counties	\$ 22,771,065.62
Oklahoma Tax Comm. Fund ..	230,229.29
Interest to Counties.....	38,947.74
Transfer.....	21,633.03

General Revenue Fund	\$ 38,600.48
----------------------------	--------------

Transfer to 1695S	\$ 29,658,655.31
Transfer.....	2,950.36



FISCAL YEAR 2008-2009

REVENUE AND APPORTIONMENT, CONTINUED

WHERE IT CAME FROM		WHERE IT WENT	
Warrant Release Filing Fee \$	49,308.24	Counties for County Clerks.. \$	76,206.00
Balance, July 1, 2008	94,467.81	Refunded	26.00
		Reserve*	67,544.05
Waste Tire Recycling Fee ... \$	5,527,346.70	Dept. of Environmental	
Cancelled Vouchers.....	250.34	Quality Revolving Fund ... \$	317,260.34
		Oklahoma Tax Comm. Fund ..	124,145.36
		Waste Tire Recycling	
		Indemnity Fund	5,076,165.27
		Refunded	10,026.07
Workers Compensation			
Insurance Premium Tax \$	7,575,685.74	General Revenue Fund	\$ 7,575,331.43
		Refunded	354.31

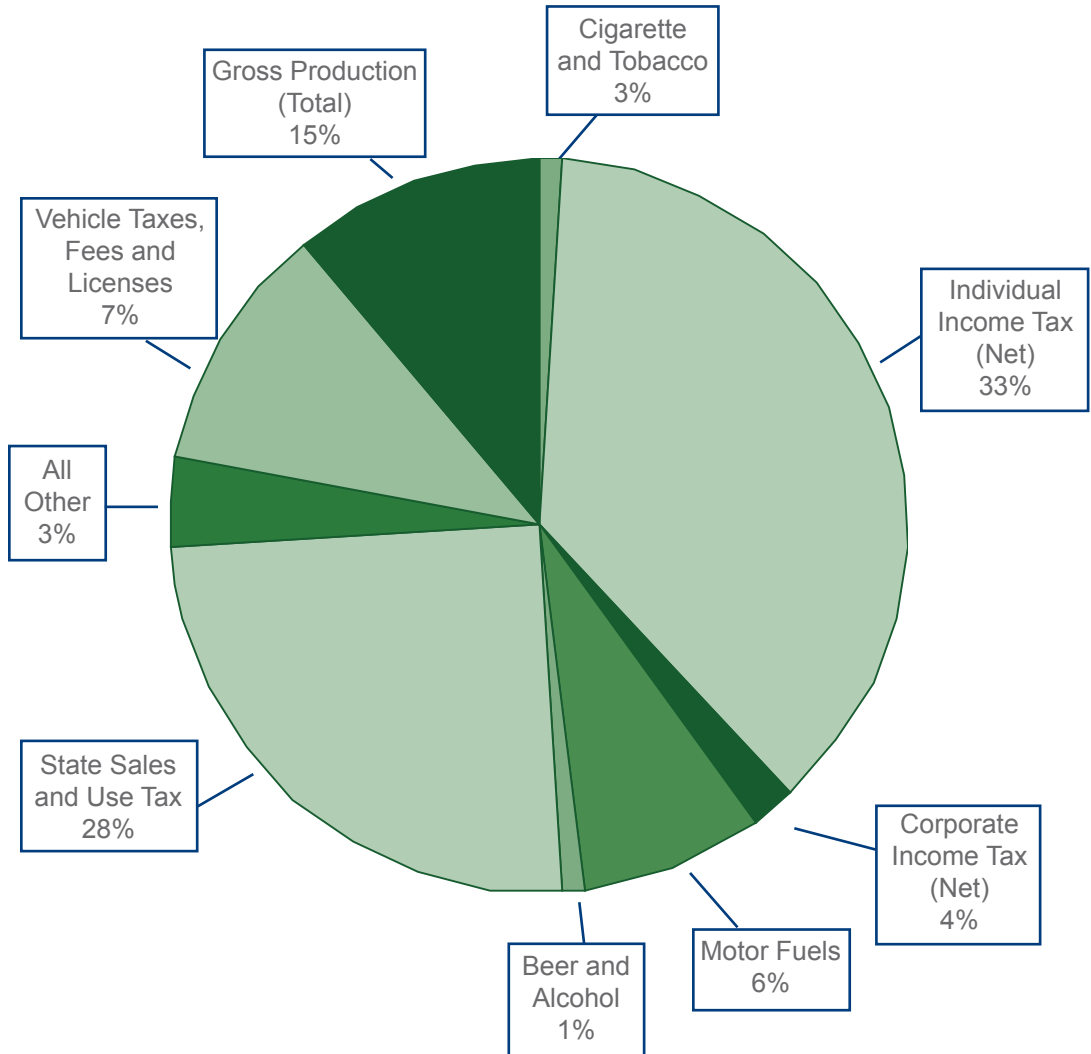
**Reserve - Funds held in litigation or for other disposition.*

This page
intentionally
left blank.



THE OKLAHOMA TAX DOLLAR FISCAL YEAR 2008-2009

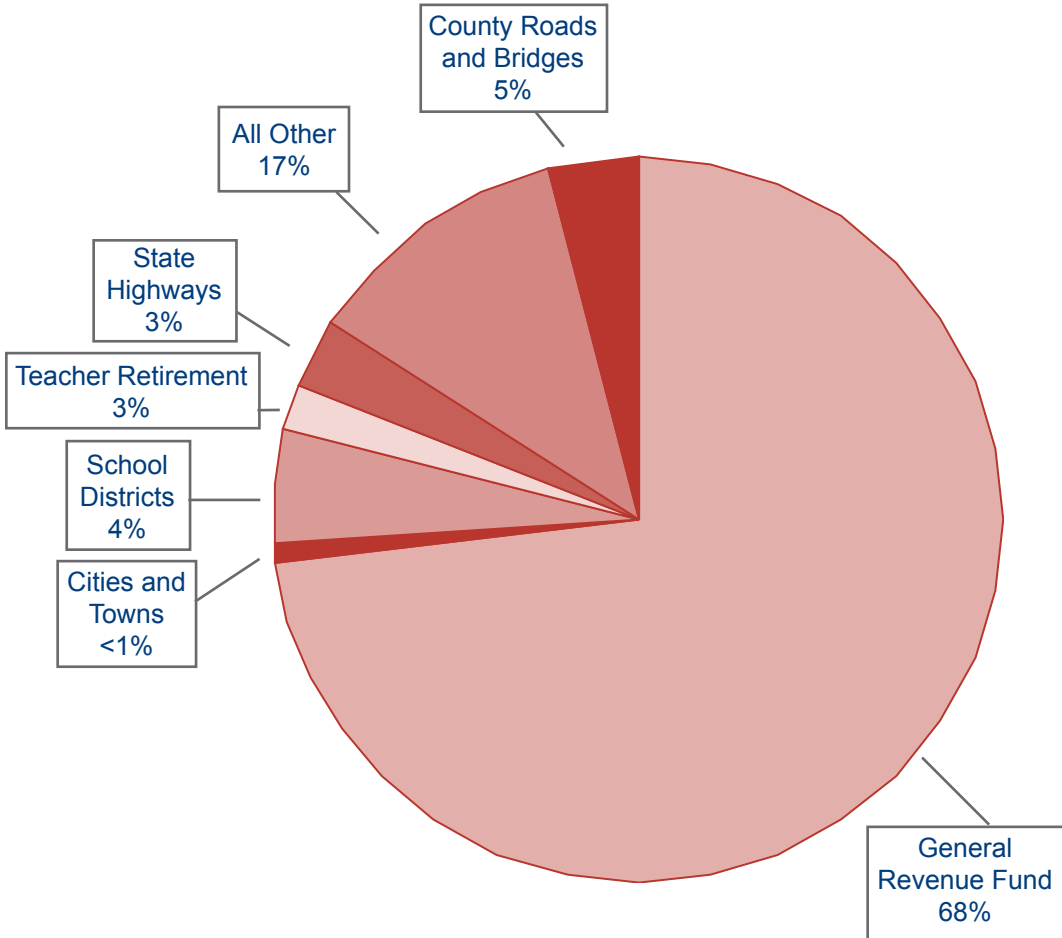
HOW FUNDS WERE PAID IN...





THE OKLAHOMA TAX DOLLAR FISCAL YEAR 2008-2009

HOW FUNDS WERE ALLOCATED...





COLLECTIONS FROM MAJOR TAX SOURCES FROM FISCAL YEAR 1976 TO 2009

FISCAL YEAR	ALCOHOLIC BEVERAGE TAX	BEVERAGE TAX AND LICENSE	CIGARETTE TAX AND LICENSE
1975-76	\$ 18,962,687.35	\$ 14,059,550.50	\$ 47,163,287.26
1976-77	19,483,500.39	14,889,028.60	48,739,428.06
1977-78	20,501,056.53	16,400,542.43	50,656,351.84
1978-79	20,641,800.27	17,228,037.29	51,146,510.10
1979-80	20,033,037.65	17,839,803.05	72,184,088.34
1980-81	22,608,530.14	19,124,697.63	75,409,357.64
1981-82	26,936,113.35	20,750,346.44	79,105,682.56
1982-83	21,528,188.11	20,609,067.22	77,316,825.67
1983-84	22,070,964.24	19,064,009.01	74,400,966.93
1984-85	24,331,611.21	18,830,715.27	72,283,974.78
1985-86	21,759,685.17	18,887,456.81	68,549,166.47
1986-87	22,482,970.07	18,642,570.50	67,244,191.98
1987-88	22,854,857.62	20,407,801.13	77,025,019.81
1988-89	22,746,924.78	20,453,797.43	71,758,582.13
1989-90	21,322,343.54	20,964,717.45	64,844,874.31
1990-91	22,334,739.85	21,906,697.30	61,134,184.61
1991-92	24,484,489.08	21,904,683.97	59,938,189.24
1992-93	23,561,685.89	22,223,294.17	59,620,956.38
1993-94	21,640,310.12	23,223,491.26	58,720,852.35
1994-95	20,628,294.63	23,262,389.54	59,836,554.25
1995-96	21,262,454.53	23,541,345.18	59,410,347.29
1996-97	21,474,281.97	22,978,239.70	60,037,768.18
1997-98	21,553,557.26	22,954,286.87	59,185,348.52
1998-99	21,876,950.17	24,389,796.22	57,689,056.21
1999-00	22,723,044.83	24,116,660.13	54,962,083.60
2000-01	23,123,522.87	23,815,059.73	53,413,374.62
2001-02	23,203,429.51	24,513,301.28	50,194,174.41
2002-03	24,398,575.92	24,234,319.98	49,556,356.67
2003-04	25,300,218.24	24,811,245.00	47,400,129.71
2004-05	26,596,570.02	24,639,440.65	89,162,719.24
2005-06	27,609,293.01	25,093,114.22	171,367,929.40
2006-07	29,244,617.04	26,004,202.19	175,180,528.57
2007-08	31,210,006.85	26,444,356.75	183,809,900.77
2008-09	32,460,352.97	27,088,268.24	182,732,906.05



COLLECTIONS FROM MAJOR TAX SOURCES FROM FISCAL YEAR 1976 TO 2009

FISCAL YEAR	CORPORATE FRANCHISE TAX	ESTATE TAX	GASOLINE EXCISE TAX
1975-76	\$ 9,518,683.91	\$ 20,952,451.41	\$ 104,870,742.04
1976-77	10,754,431.22	19,615,141.68	110,020,416.66
1977-78	11,847,895.20	22,848,736.52	111,725,367.84
1978-79	13,351,141.05	25,996,023.58	119,655,208.44
1979-80	16,381,459.92	26,949,620.20	110,308,844.10
1980-81	17,898,346.71	37,249,569.43	107,345,955.18
1981-82	21,157,453.08	41,041,076.00	112,726,757.40
1982-83	26,197,931.67	33,540,812.60	102,477,585.90
1983-84	29,816,622.05	32,786,149.10	117,753,293.79
1984-85	31,226,619.30	38,904,438.90	154,037,835.20
1985-86	31,483,361.37	40,338,032.52	166,151,370.53
1986-87	31,668,464.82	48,505,802.28	166,816,383.64
1987-88	29,165,946.73	40,941,272.67	260,623,155.06
1988-89	31,870,387.98	37,468,768.22	262,391,848.31
1989-90	30,151,869.50	68,176,044.54	257,946,909.29
1990-91	31,982,535.31	40,893,163.21	252,513,480.71
1991-92	34,473,871.18	47,777,649.76	255,085,238.03
1992-93	34,807,512.45	52,554,654.87	261,343,561.58
1993-94	33,137,308.23	59,210,328.67	270,081,640.25
1994-95	37,488,141.18	70,665,558.76	269,691,827.48
1995-96	37,061,721.02	70,199,010.44	277,570,832.38
1996-97	40,609,631.42	82,916,175.00	288,186,091.41
1997-98	43,252,598.30	84,618,546.81	295,453,185.30
1998-99	38,408,335.84	91,778,457.84	294,625,500.86
1999-00	44,020,388.09	91,608,541.37	297,860,742.94
2000-01	43,390,067.39	87,229,923.85	290,106,696.19
2001-02	43,985,617.30	89,348,868.90	299,449,743.40
2002-03	42,971,021.87	77,218,464.77	295,443,382.40
2003-04	42,689,670.78	113,134,722.11	302,800,579.83
2004-05	42,094,064.80	83,242,896.32	302,625,479.28
2005-06	44,019,735.24	82,049,032.56	313,105,945.98
2006-07	46,131,517.38	71,195,259.31	282,451,545.32
2007-08	49,368,021.18	61,346,283.01	287,351,081.20
2008-09	49,256,040.31	43,864,213.57	305,202,959.77



COLLECTIONS FROM MAJOR TAX SOURCES FROM FISCAL YEAR 1976 TO 2009

FISCAL YEAR	GROSS PRODUCTION (SEVERANCE)	INCOME TAX
1975-76	\$ 151,797,146.88	\$ 287,942,002.24
1976-77	191,440,843.49	343,731,608.05
1977-78	218,631,630.99	409,072,709.77
1978-79	244,796,192.03	498,263,613.41
1979-80	404,823,755.27	587,193,987.97
1980-81	573,143,749.27	732,491,215.68
1981-82	719,815,453.52	910,117,696.27
1982-83	757,158,759.33	937,761,228.50
1983-84	690,535,543.74	934,043,644.54
1984-85	691,895,910.31	1,016,112,851.65
1985-86	557,997,023.88	1,011,481,103.62
1986-87	362,087,526.79	984,516,119.54
1987-88	384,350,038.77	1,087,802,020.98
1988-89	367,940,574.94	1,212,735,586.14
1989-90	396,017,037.36	1,273,244,733.30
1990-91	411,833,398.83	1,537,508,655.15
1991-92	352,833,539.38	1,575,105,747.43
1992-93	393,923,620.72	1,663,795,466.66
1993-94	366,920,185.64	1,740,972,482.42
1994-95	304,820,115.47	1,854,084,640.35
1995-96	319,872,733.61	1,970,190,154.03
1996-97	407,984,189.30	2,188,886,965.94
1997-98	355,203,676.44	2,433,543,442.27
1998-99	249,405,330.04	2,608,552,852.35
1999-00	404,797,409.32	2,730,883,008.94
2000-01	735,228,790.38	2,905,674,203.95
2001-02	411,466,717.16	2,985,724,811.66
2002-03	592,896,596.01	2,874,367,248.65
2003-04	691,778,683.23	3,063,040,440.43
2004-05	863,919,366.55	3,327,902,994.54
2005-06	1,153,000,310.87	3,785,151,544.62
2006-07	987,972,285.22	4,041,754,427.28
2007-08	1,249,985,305.22	3,890,555,000.24
2008-09	1,158,639,144.86	3,715,023,639.59



COLLECTIONS FROM MAJOR TAX SOURCES FROM FISCAL YEAR 1976 TO 2009

FISCAL YEAR	STATE SALES TAX	TOBACCO TAX AND LICENSE
1975-76	\$ 168,981,395.59	\$ 3,612,921.65
1976-77	190,864,384.72	3,730,818.92
1977-78	224,177,883.54	3,916,927.20
1978-79	257,965,707.26	4,173,111.51
1979-80	295,037,646.58	4,437,593.16
1980-81	356,759,065.80	4,052,476.40
1981-82	436,942,144.44	3,413,307.81
1982-83	381,033,622.58	3,433,998.66
1983-84	433,697,267.07	3,286,404.37
1984-85	595,528,804.28	3,141,879.57
1985-86	617,945,936.26	6,942,915.59
1986-87	582,005,604.22	7,469,990.34
1987-88	720,617,036.57	7,588,867.54
1988-89	741,154,594.19	7,775,579.86
1989-90	797,801,533.18	8,261,426.15
1990-91	914,166,144.94	8,605,095.01
1991-92	933,260,371.13	9,011,092.56
1992-93	963,946,124.46	9,665,004.32
1993-94	1,037,995,359.77	10,622,914.27
1994-95	1,082,606,025.06	11,307,777.31
1995-96	1,140,278,257.32	11,256,302.12
1996-97	1,196,522,747.55	11,205,801.61
1997-98	1,250,691,551.19	11,073,449.68
1998-99	1,304,901,412.95	11,798,115.22
1999-00	1,373,889,863.62	11,912,561.93
2000-01	1,457,854,666.44	12,001,630.60
2001-02	1,455,966,209.97	11,496,852.26
2002-03	1,422,902,928.14	12,284,532.09
2003-04	1,515,360,556.51	12,424,875.82
2004-05	1,574,890,574.21	18,708,447.75
2005-06	1,721,568,174.17	27,096,112.12
2006-07	1,820,605,119.63	26,373,544.15
2007-08	1,972,101,510.49	27,222,520.09
2008-09	2,015,216,791.35	28,359,841.56



Our mission is to serve
the people of Oklahoma
by promoting tax
compliance through
quality service and fair
administration.

For further information
regarding this or
any publication of the
Oklahoma Tax Commission,
please contact the
Communications Division
at (405) 521-3637.