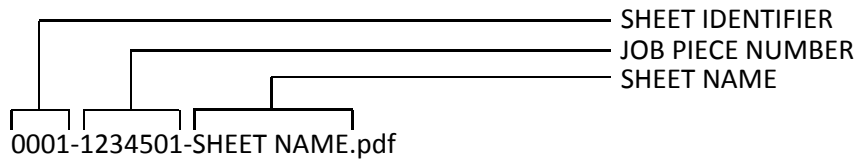


DIGITAL SHEET NAMING CONVENTION

Sheet Identifiers are placed in the Title Block lower right of the drawing sheet. Sheet Identifiers contain a single position alpha code and are immediately followed by the drawing sheet sequence number. The alpha code references the discipline the sheet represents.

Digital storing of the final deliverable digital plan sheet shall be completed in .pdf form, 11x17 (scaled appropriately) and a single document per drawing sheet at 600 dpi. The below standard naming convention has been established.

File Name Legend



The sheet identifier does not necessarily need to be four characters long; however, the sheet identifier must contain the discipline code and sequence number as stated below.

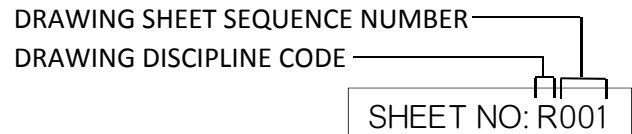
Sheet Identifiers with Discipline Codes

Discipline Codes correspond to the discipline the specific sheet represents. The discipline drawing numbers are sequential only for that specific discipline. These Standard Discipline codes represent most divisions within ODOT and shall be used. For any division that is not listed, please contact the Office Services Division for the appropriate Alpha Drawing Discipline Code.

Standard Discipline Code Legend

0	Title and Typical Section Sheets are exempt
AB	Sum. Pay Items and Notes (Bridge)
AR	Sum. Pay Items and Notes (Roadway)
AT	Sum. Pay Items and Notes (Traffic)
AU	Sum. Pay Items and Notes (Misc.)
AX	Summary Sheets
B	Bridge
E	Environmental
R	Roadway
S	Survey
T	Traffic
U	Miscellaneous
X	Cross Sections

Sheet Identifier Legend



See Index of Sheets Example addendum for further information.