

# OKLAHOMA STATE INNOVATION MODEL (OSIM): KICKOFF WEBINAR

---

**March 18, 2015 11am-12pm CST**

**Presenters:**

**Julie Cox-Kain**, Deputy Secretary of Health and Human Services, Senior Deputy Commissioner

**Alex Miley**, OSIM Project Director, OSDH

**Isaac Lutz**, OSIM Project Coordinator, OSDH

# OSIM Webinar: Agenda

- OSIM Overview
- OSIM & OHIP Alignment
- OHIP/OSIM Workgroups
- Stakeholder Engagement
- OSIM Operations Update-
- Q & A Session

# OSIM OVERVIEW

---

# OSIM Overview: Project Team

- **Julie Cox-Kain-** Deputy Secretary of Health and Human Services, Senior Deputy Commissioner
- **Joseph Fairbanks-** Director for the Center of Health Innovation and Effectiveness (CHIE)
- **C. Alex Miley-** OSIM Project Director
- **Brigido Ramirez Espinosa-** Health Planning Manager
- **Valorie Owens-** Statewide Access to Care Manager
- **Jana Castleberry-** Health Planning Coordinator
- **Isaac Lutz-** OSIM Project Coordinator

# OSIM Overview

- The **State Innovation Model** (SIM) initiative is a grant awarded through the Centers for Medicare and Medicaid Services (CMS) that provides technical and financial support to states for the development of state-led, multi-payer, health care service delivery and payment models.
  - The OSIM grant was awarded to the fiduciary agent, the Oklahoma State Department of Health (OSDH), on December 16, 2014
  - The OSIM grant period began February 1, 2015

# OSIM Overview

- The SIM grant is based on the premise that health care system transformation can be accelerated to provide better care at lower costs through broad stakeholder engagement and innovative multi-payer models.
- The OSIM design will integrate evidence-based population and clinical interventions with health care delivery system innovation and redesign.

# OSIM Overview: Goals and Objectives

- **Goal:** To provide state-based solutions to Oklahoma's health care challenges.
  - Improve population health
  - Provide better care
  - Reduce growth in health care expenditures
- **Objective:** To create a roadmap for health care transformation in Oklahoma.
  - This roadmap, the State Health System Innovation Plan (SHSIP), will include:
    - Description of State Health Care Environment
    - Report on Stakeholder Engagement and Design Process Deliberations
    - Health System Design and Performance Objectives
    - Value-Based Payment and/or Service Delivery Model
    - Plan for Health Care Delivery System Transformation
    - Plan for Improving Population Health

# OSIM & OHIP ALIGNMENT

---



# OSIM & OHIP Alignment

- The Oklahoma Health Improvement Plan (OHIP) coalition applied collectively for the SIM grant.
  - OHIP is a public private coalition that began in 2008 to develop a comprehensive state health improvement plan every 5 years: See the [OHIP 20/20 Report](#)
- OHIP Goals

## Flagship Issues

- Obesity
- Tobacco
- Children's Health
- Behavioral Health

## Systems

- Health Education
- Health Transformation

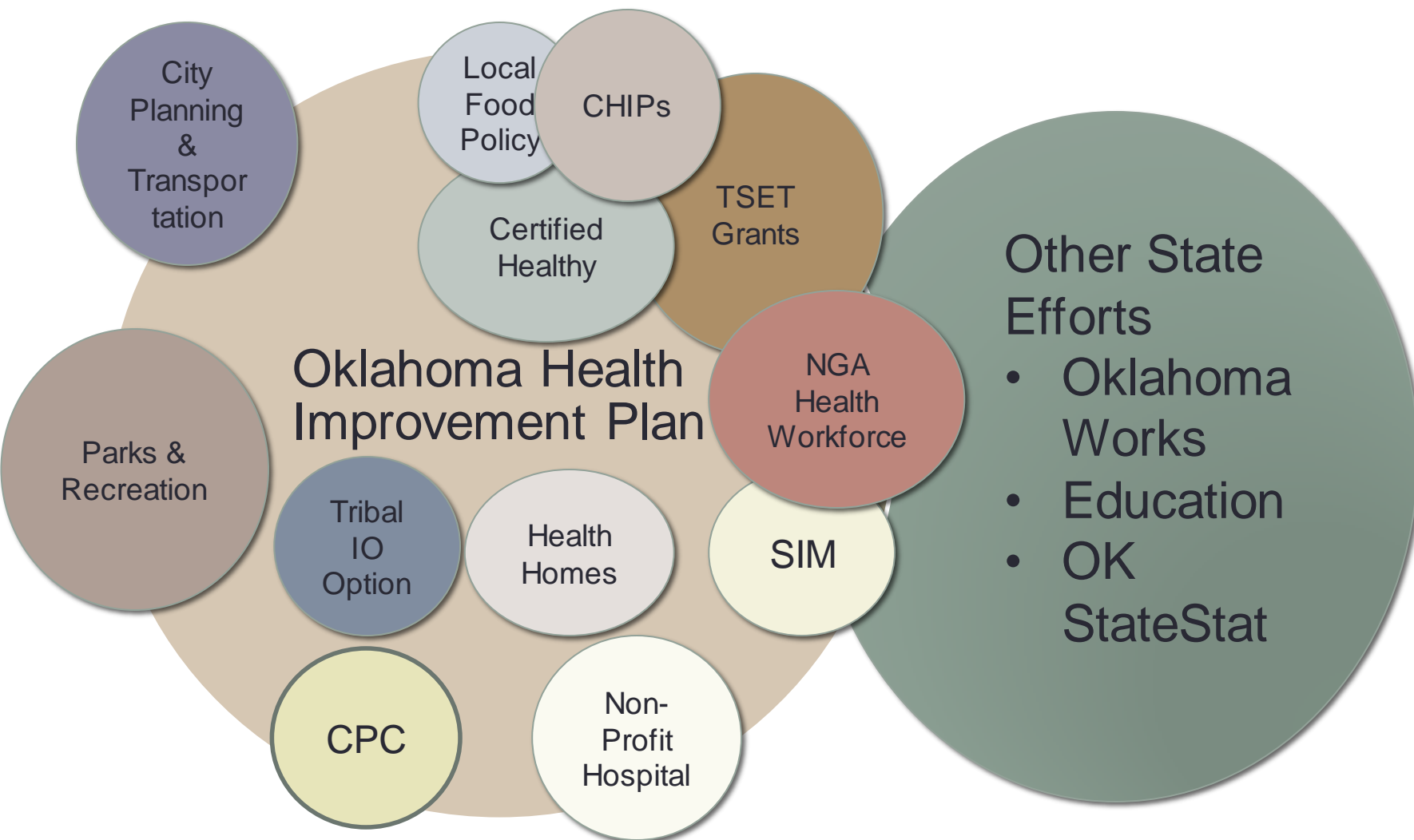
## Social Determinants

- Jobs/Wealth
- Educational Attainment

## OSIM & OHIP Alignment

To ensure sustainability and integration into the state's broader health care system redesign efforts, OSIM has aligned project goals and objectives within the state's Health Improvement Plan.

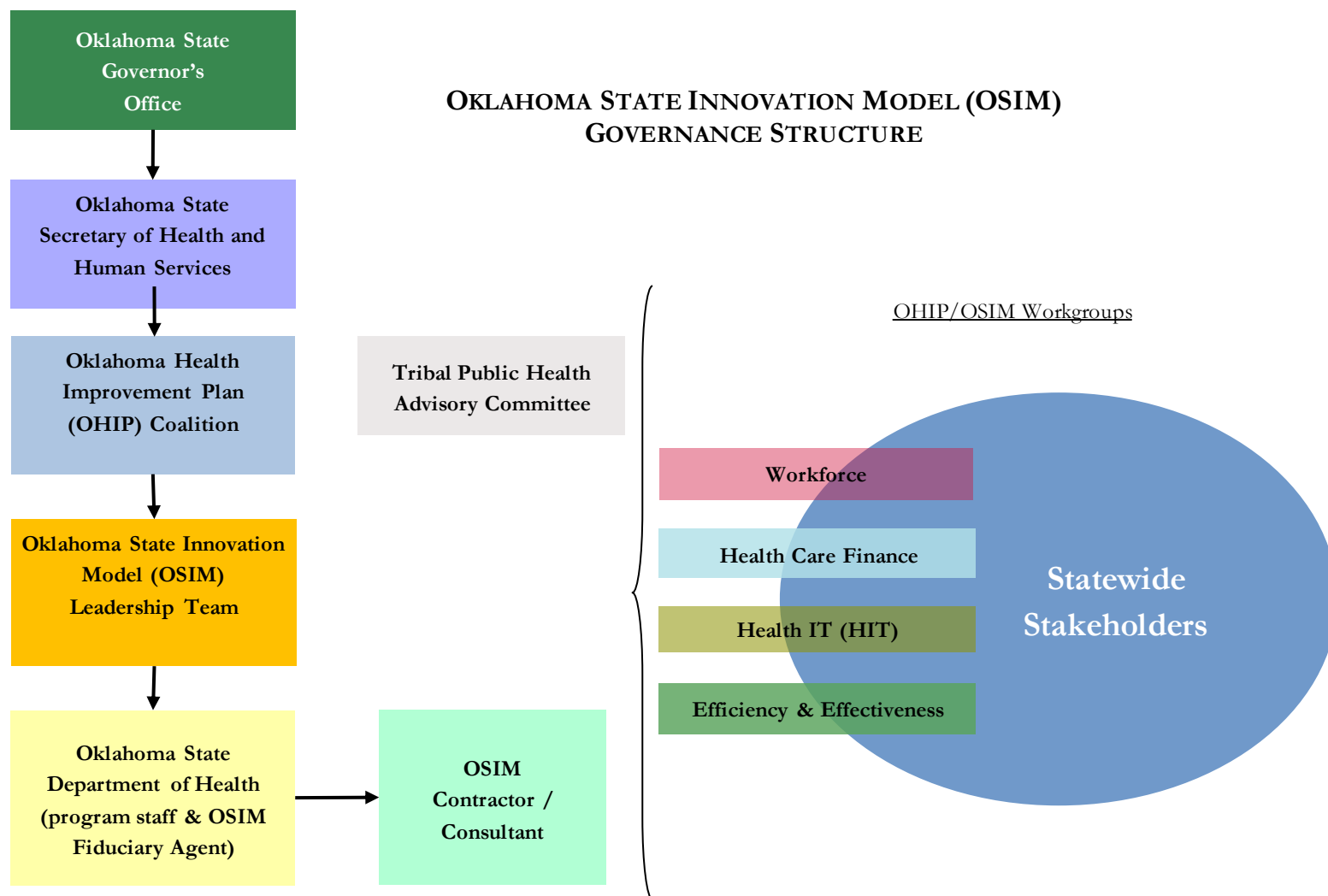
# Goal Alignment



## OSIM & OHIP Alignment

The OSIM project is utilizing the OHIP governance structure to accomplish the health care delivery system transformation and provide accountability for the OSIM project.

# OSIM and OHIP Alignment: Governance:



# OHIP/OSIM WORKGROUPS

---

- Health Efficiency and Effectiveness (HEE)
- Health Finance
- Health Information Technology (HIT)
- Health Workforce

# OHIP/OSIM Workgroups: Role in OSIM

- OHIP will be maintained throughout the OSIM Grant.
  - The OHIP/OSIM Project Managers will be responsible for setting Workgroup meetings, agendas, and keeping members apprised of the project's status.
  - Leadership will provide an extra layer of accountability and expertise to ensure the project's deliverables are produced timely and accurately.
- The Workgroups will provide subject matter expertise to help refine the varying components of the SHSIP to include Oklahoma specific solutions.

# OHIP/OSIM Workgroups

- To help the Workgroups achieve the strategic goals and objectives of the OSIM project, OSDH is finalizing its procurement of five distinct and specialized contractors that will assist in the model design and drafting of the SHSIP.
- Each contractor will be assigned a highly technical scope of work that is relevant to the overall composition of the SHSIP.
- OSIM is assimilating into the existing OHIP Workgroups, and the Workgroups will help facilitate, monitor, and evaluate the various activities and products of OSIM contractors and staff.



# OHIP/OSIM Workgroups: HEE

- **Workgroup Leader:**

Rebecca Pasternik-Ikard, Deputy State Medicaid Director

- **OSDH Project Manager:**

Valorie Owens, Manager of Statewide Access to Care Planning

## **Workgroup Goal of OSIM:**

*Provide guidance in the design of an evaluation plan that identifies specific quality metrics in coordination with healthcare delivery models identified for Oklahoma with a focus on three key outcomes: (1) strengthening population health; (2) transforming the health care delivery system; and (3) decreasing per capita health care spending.*

# OHIP/OSIM Workgroups: HEE

## **Deliverables:**

Program Evaluation Report

### **1. Population Health Needs Assessment:**

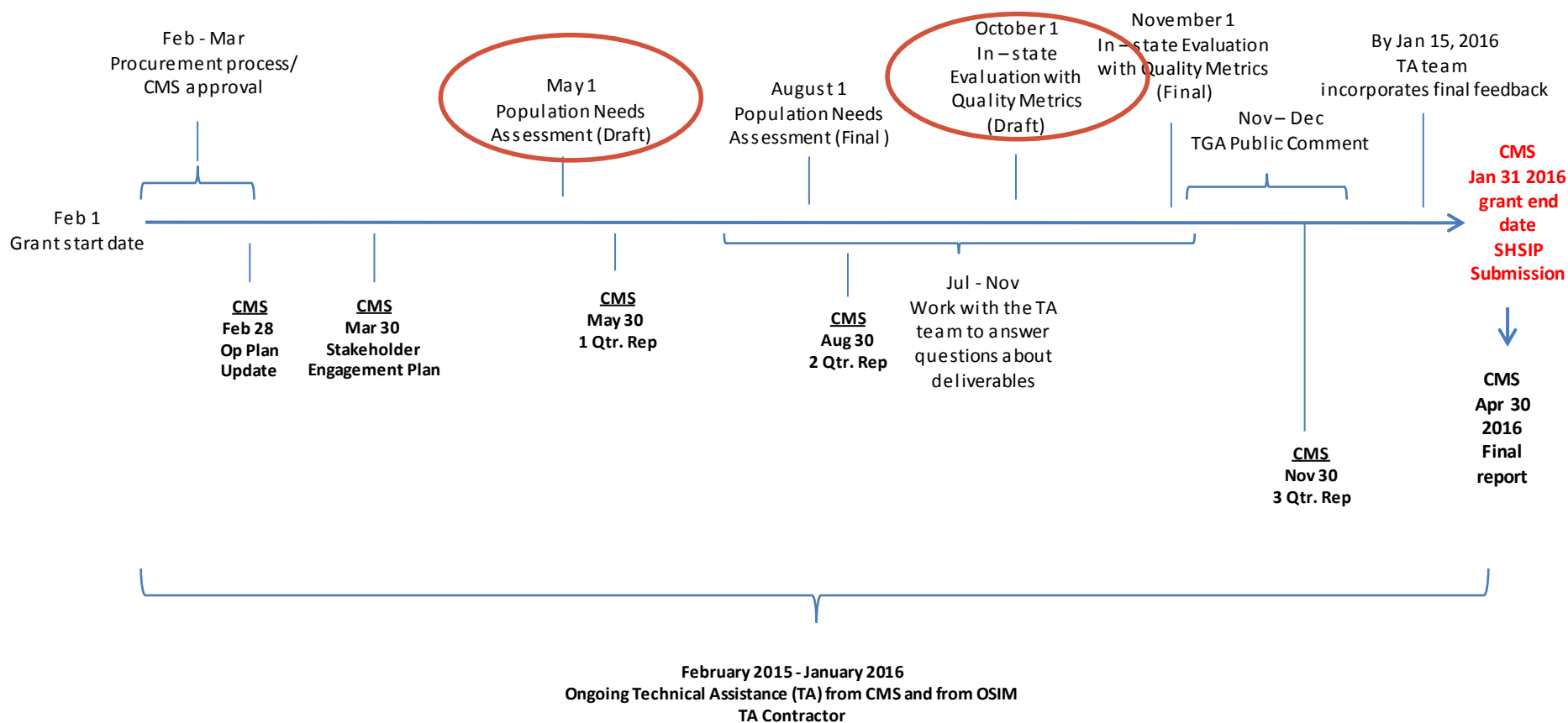
**Objectives:** *Identify and describe statewide health problems, gaps and strengths in services, and interventions to improve the health of Oklahoma.*

### **2. In-State Program Evaluation Plan with Quality Metrics:**

**Objectives:** *Design an evaluation plan that incorporates quality measurements, addresses health disparities, and provides a means by which to evaluate them to align them with a value-based health care delivery system.*

# OHIP/OSIM Workgroups: HEE

## Timeline:



# OHIP/OSIM Workgroups: Health Finance

- **Workgroup Leader:**

Joseph Cunningham, MD, Chief Medical Officer, VP, Blue Cross Blue Shield of Oklahoma

- **OSDH Project Manager:**

Brigido Ramirez Espinosa, Health Planning Manager

## **Workgroup Goal:**

*Work with the actuarial contractor to integrate a new value based payment model based on pay-for-success and perform actuarial analysis of OSIM interventions and evaluations.*

# OHIP/OSIM Workgroups: Health Finance

## **Deliverables:**

Actuarial Analysis

### **1. Analysis of Care Delivery Models in Oklahoma:**

**Objectives:** *Identify existing delivery models in Oklahoma and new delivery models adopted in other states.*

### **2. Market Effects on Health Care Transformation:**

**Objectives:** *Assess market effects on health care transformation for the Federal Exchanges, Medicaid, EGID, Medicare, and private insurance groups.*

### **3. High-cost Delivery Services:**

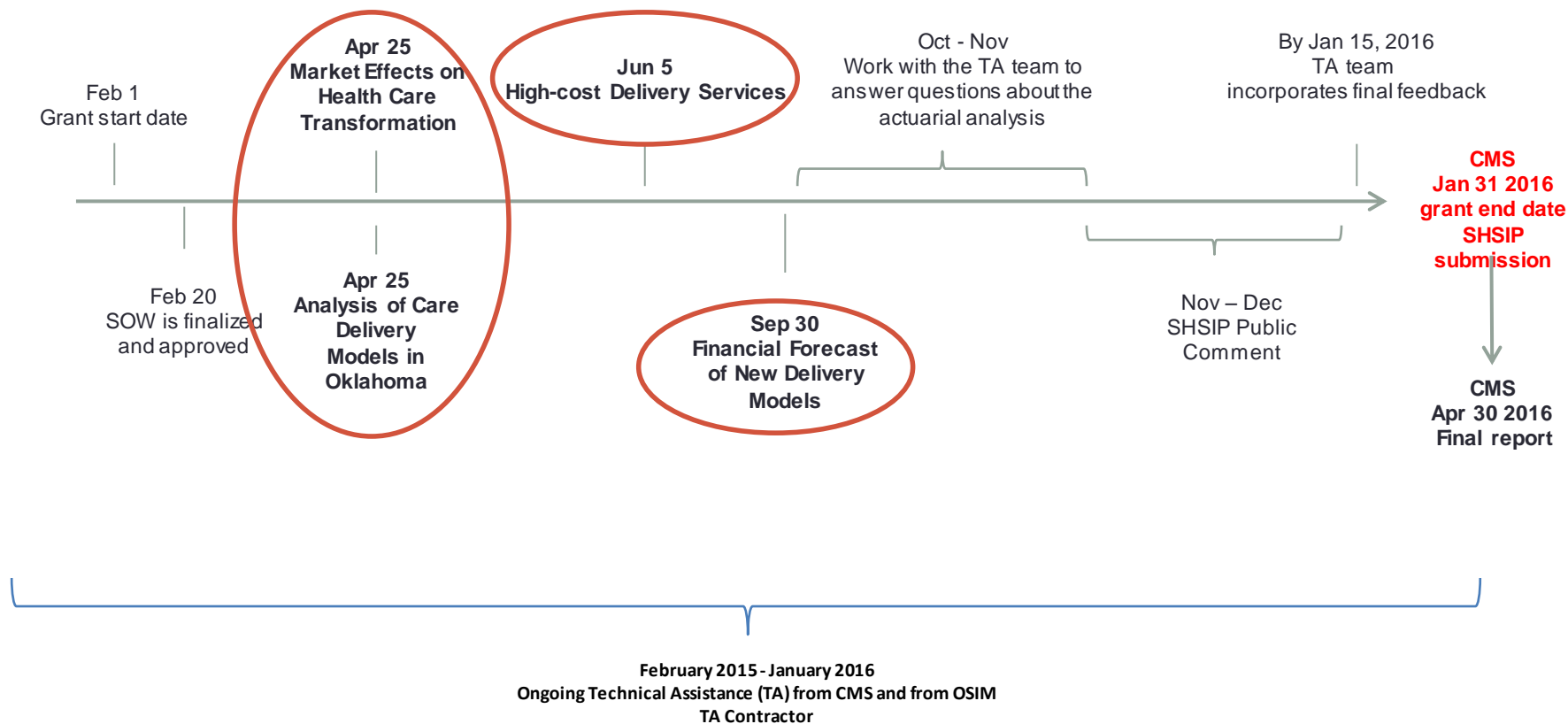
**Objectives:** *Compare cost of high-cost services across all payers and define optimization of benchmarks for inpatient/outpatient services*

### **4. Financial Forecast of New Delivery Models:**

**Objectives:** *Forecast costs for various payment models and high-cost services and discuss implications and challenges of different economies of scale across Oklahoma*

# OHIP/OSIM Workgroups: Health Finance

## Timeline:



# OHIP/OSIM Workgroups: HIT

- **Workgroup Leader:**

David Kendrick, MD, MPH, Chair of Medical Informatics,  
OU College of Medicine

- **OSDH Project Manager:**

Brigido Ramirez Espinosa, Health Planning Manager

## **Workgroup Goal:**

*Increase adoption of Electronic Health Records (EHR) and attainment of meaningful use (MU), incentivize adoption among non-EHR providers and connect them to existing Health Information Exchanges (HIEs), foster interoperable health systems, and plan the development of a value-based analytics (VBA) tool.*

# OHIP/OSIM Workgroups: HIT

## **Deliverables:**

EHR Adoption Analysis, HIE Environmental Scan, and VBA Roadmap

## **EHR Survey:**

**Objective:** *Perform a statewide EHR adoption survey to describe how Oklahoma health care providers use EHR to deliver better care, improve health outcomes, and reduce cost.*

## **HIE Environmental Scan:**

**Objective:** *Perform a statewide environmental scan of existing HIEs through interviews and develop a proposal to leverage and implement a statewide interoperable health information network.*

## **VBA Roadmap:**

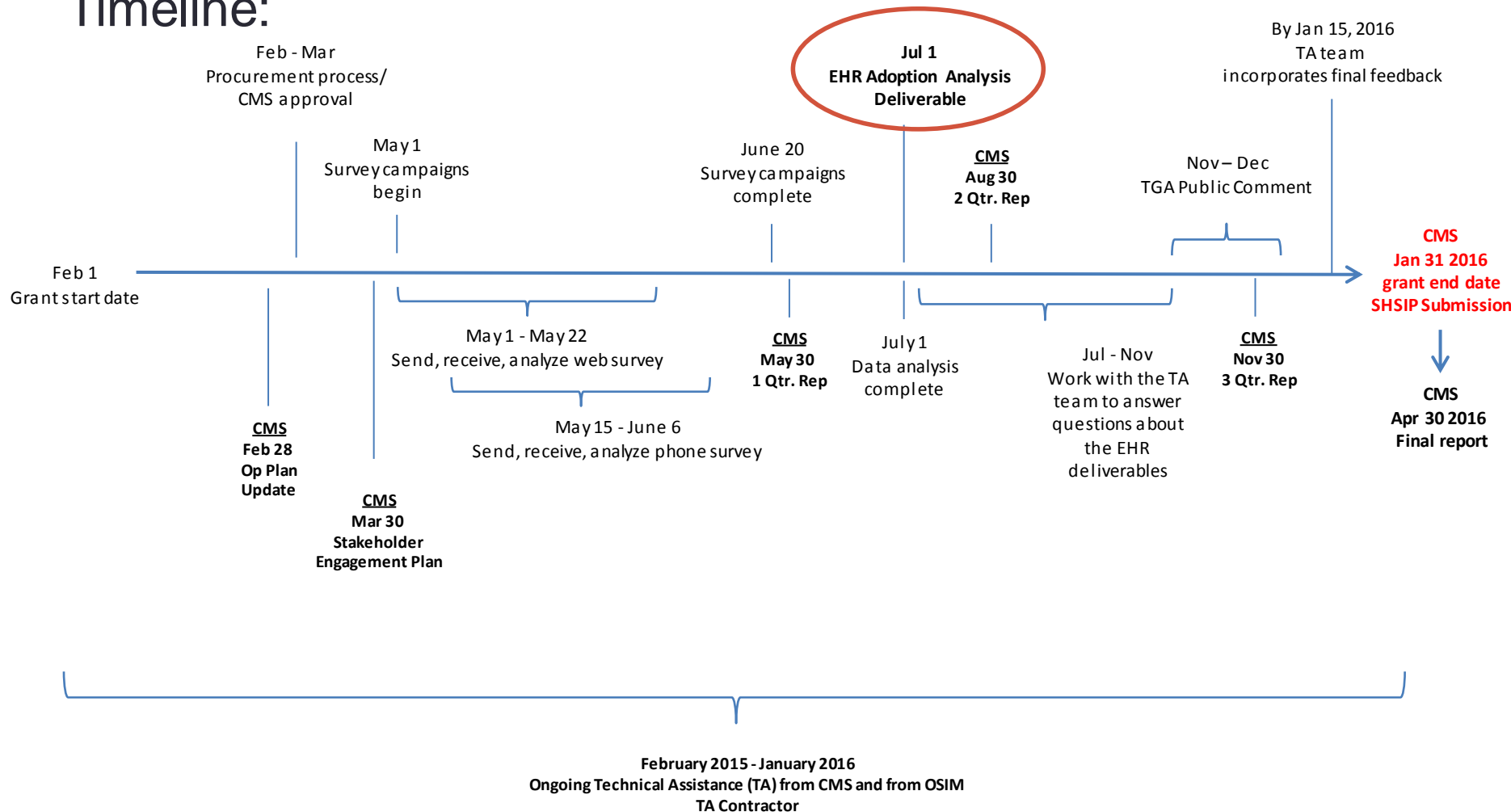
**Objective:** *Create a roadmap for Oklahoma to develop a VBA tool that supports health care and payment reform initiatives, addresses the need for transparency in health care costs, and supports health care consumers and purchasers by highlighting key considerations and potential solutions based on previous experience in early-adopting VBA states.*



# OHIP/OSIM Workgroups: HIT- EHR

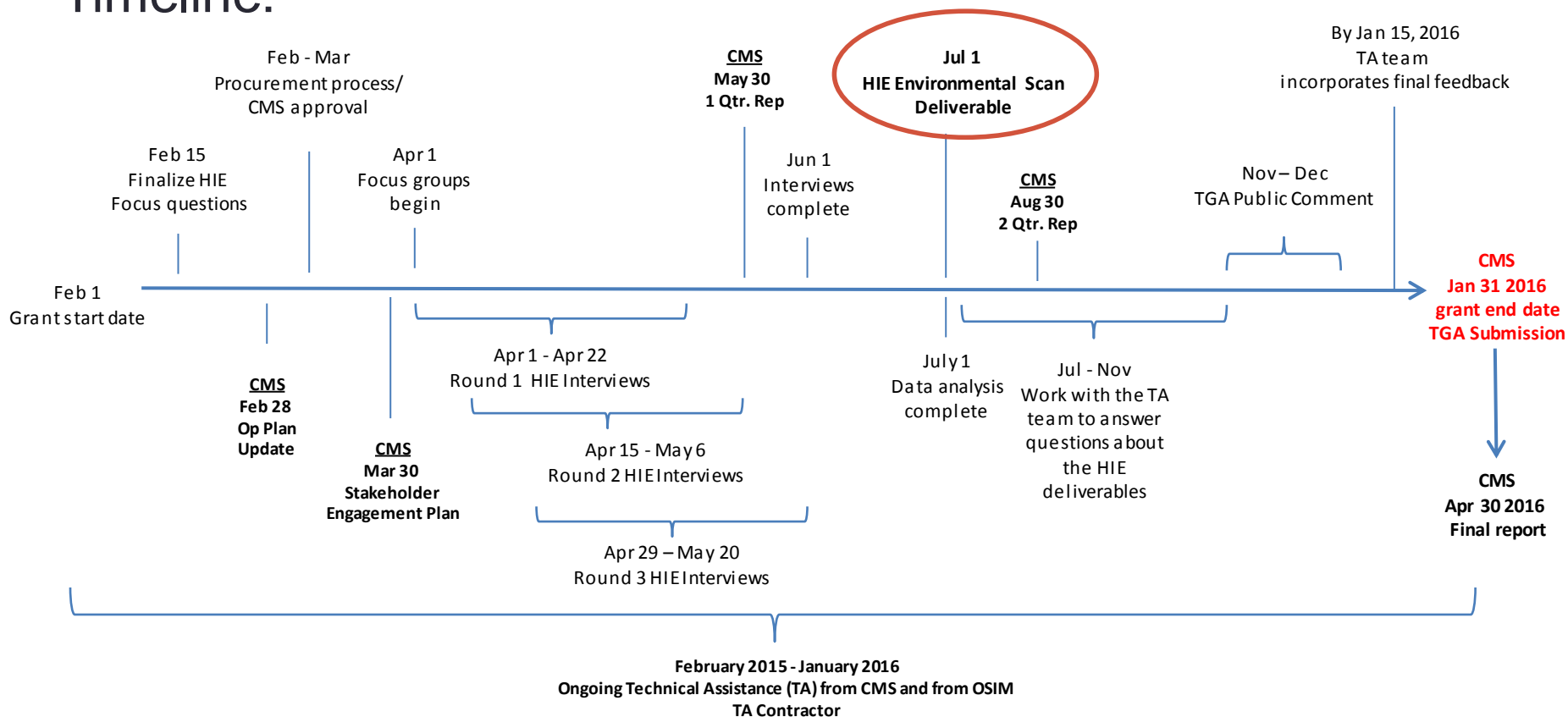
## Survey

### Timeline:



# OHIP/OSIM Workgroups: HIT- HIE Scan

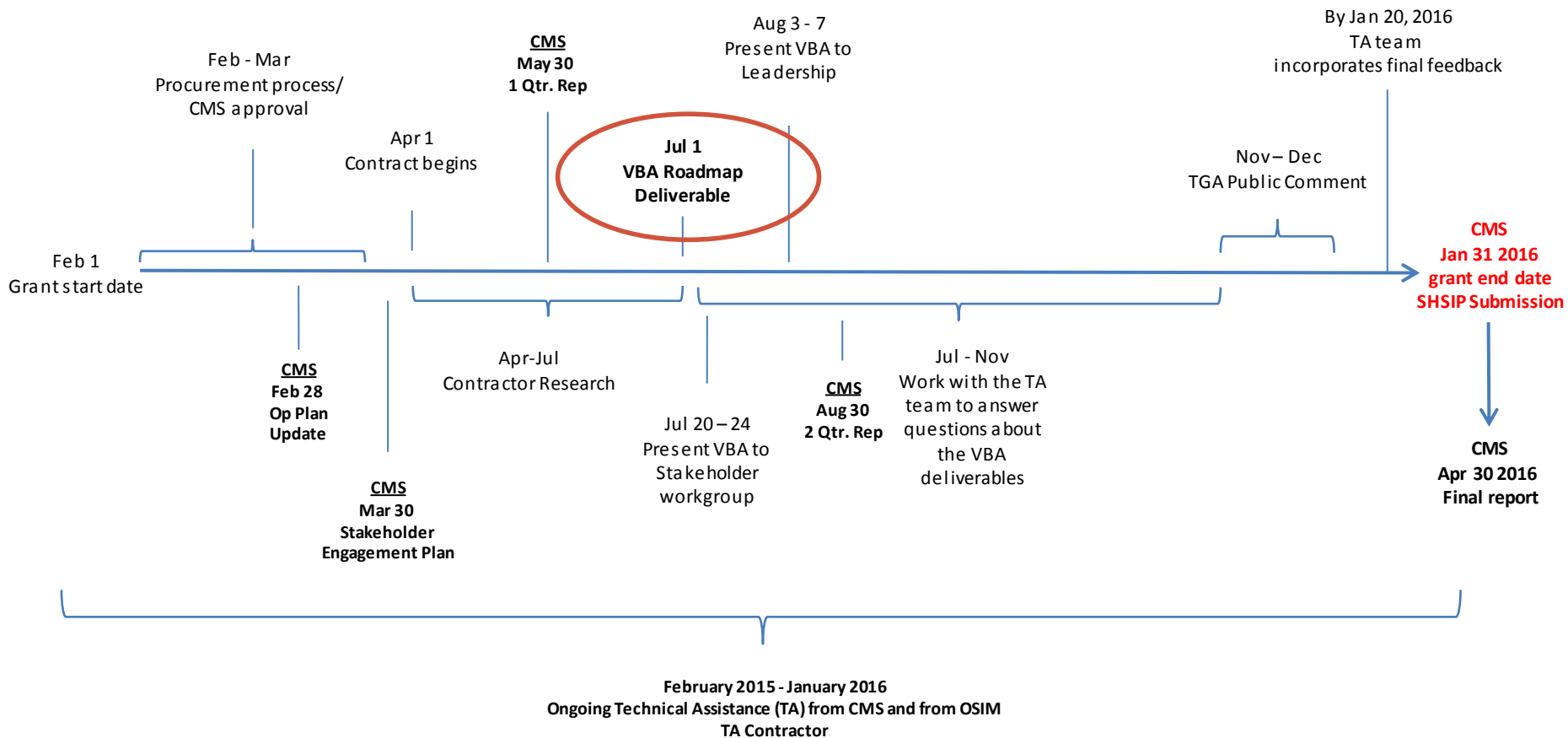
## Timeline:



# OHIP/OSIM Workgroups: HIT- VBA

## Roadmap

### Timeline:



# OHIP/OSIM Workgroups: Health Workforce

- **Workgroup Leader:**

Deidre D. Myers, MA, Deputy Secretary of Commerce

- **OSDH Project Manager:**

Jana Castleberry, Health Planning Coordinator

## **Workgroup Goal for OSIM:**

*Develop a health workforce data catalog, identify data gaps, and assess state capacity for meeting current and future health care demands; provide a policy prospectus for health workforce redesign and training, recruitment, and retention.*

# OHIP/OSIM Workgroups: Health Workforce

## **Deliverables:**

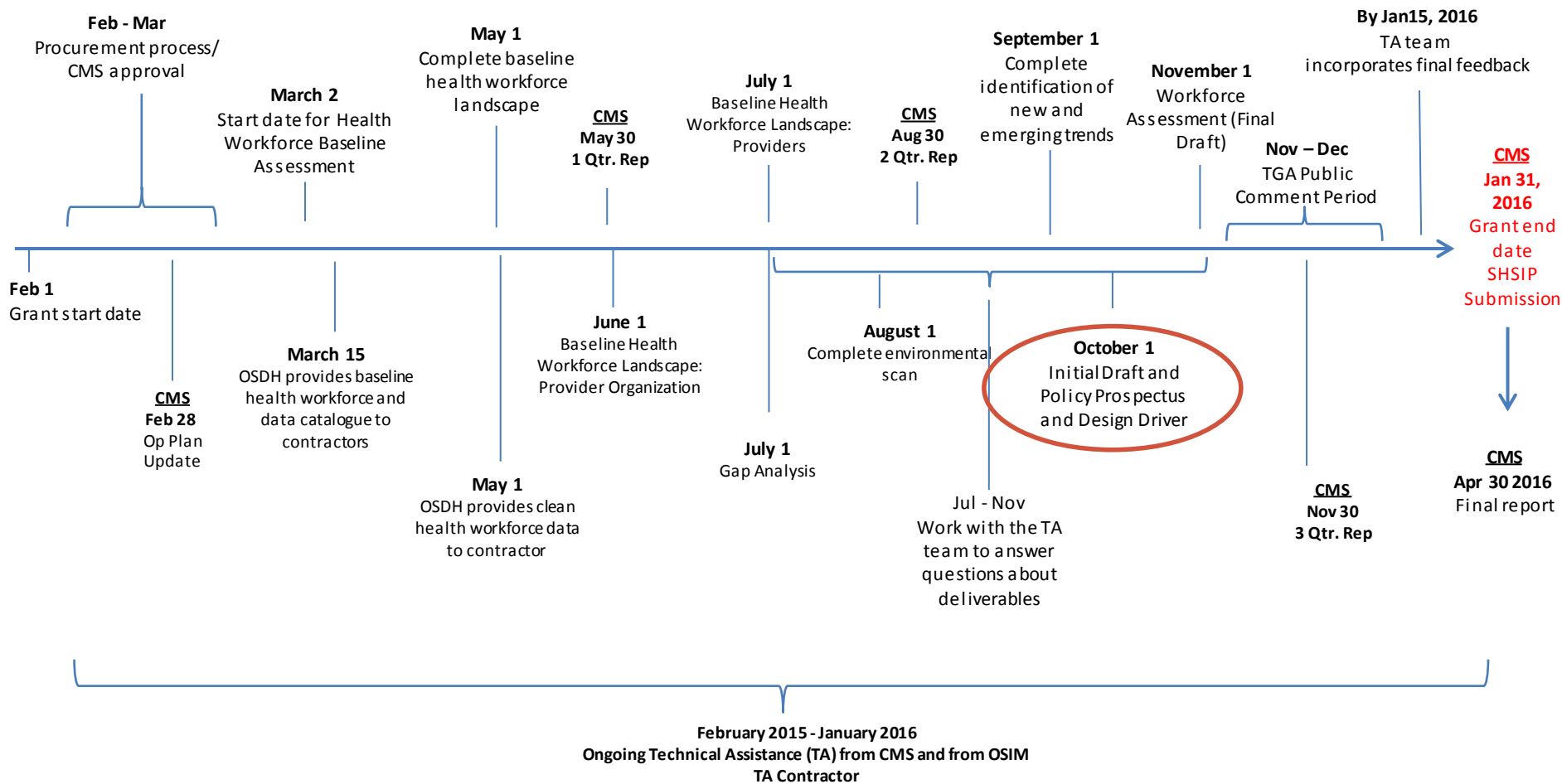
Health Workforce Assessment

### **Health Workforce Assessment**

**Objective:** *Conduct a statewide assessment of the health workforce in Oklahoma. The analysis will include an assessment of the state's internal workforce capacity, a gap analysis that identifies underserved areas and workforce deficits, and strategies for assuring a flexible, well-trained, and appropriately distributed health workforce capable of meeting the needs of a value-based health care delivery system.*

# OHIP/OSIM Workgroups: Health Workforce

## Timeline:



# STAKEHOLDER ENGAGEMENT

---

# Stakeholder Engagement

- Stakeholder Engagement is a key component to health care transformation and the OSIM grant.
- Engaging stakeholders throughout the OSIM grant will ensure the model design is viable, sustainable, inclusive, and representative of all Oklahomans.
- The Stakeholder Engagement Strategy will be a multi-pronged approach:
  1. Leverage the existing OHIP Workgroups to ensure representatives with appropriate subject matter expertise and practical experience are participating in OSIM;
  2. Utilize the Tribal Public Health Advisory Committee (TPHAC) to ensure Tribal partner's provide feedback and recommendations for model design.
  3. OSIM staff and a Stakeholder Engagement Facilitator (SEF) will work together in the field to engage in outreach efforts throughout Oklahoma to solicit more interest, support, and subject matter expertise.



# Stakeholder Engagement

- The OSIM Stakeholder Engagement plan will leverage current stakeholders, OSDH programs (e.g. Certified Healthy Oklahoma, Turning Point), and the Chambers of Commerce to engage and outreach to new partners for the OSIM project who can provide feedback and support.



- To ensure that the OSIM project is inclusive and representative, the outreach strategy will ensure proportional geographical representation from each of the 4 quadrants and two metropolitan areas of Oklahoma.

# OSIM OPERATIONS UPDATE

---

# Operations Update: Technical Assistance

- To help OSIM develop the SHSIP and ongoing project management strategies, several modes of technical assistance (TA) will be provided by:
  - CMS: Center for Medicare and Medicaid Innovation (CMMI)
  - National Governors Association (NGA)
  - OSIM Technical Assistance Contractor
- In collaboration with all TAs, the OSIM staff, OSIM Leadership, and OHIP Workgroups will continue to work together to monitor and evaluate the progress of the OSIM project.
- Additionally, project management tools have been developed, and an OSIM Website is being updated to apprise OSIM stakeholders and the public of the project's goals, objectives, and status.

# Staying Involved In OSIM

- Upcoming OHIP/OSIM Workgroup meetings
  - March 25<sup>th</sup>, Health Efficiency and Effectiveness Workgroup, OHCA Beavers Bend, 1:30-3:30PM
- Stay up to date on our website
  - <http://CHIE.health.ok.gov>
- Contact the OSIM team with your questions
  - Joseph Fairbanks: [JoeF@health.ok.gov](mailto:JoeF@health.ok.gov), 405-271-9444 x 52981
  - Alex Miley: [CatherineAM@health.ok.gov](mailto:CatherineAM@health.ok.gov), 405-271-9444 x 52544
  - Isaac Lutz: [IsaacL@health.ok.gov](mailto:IsaacL@health.ok.gov), 405-271-9444 x 52542
  - Brigido Ramirez Espinosa: [BrigidoE@health.ok.gov](mailto:BrigidoE@health.ok.gov), 405-271-9444 x 30650
  - Valorie Owens: [ValorieO@health.ok.gov](mailto:ValorieO@health.ok.gov), 405-271-9444 x 56734
  - Jana Castleberry: [JanaC@health.ok.gov](mailto:JanaC@health.ok.gov), 405-271-9444 x 56520

# Q&A

---