

Abortion Surveillance in Oklahoma

2002-2014 SUMMARY REPORT (CORRECTED) · OKLAHOMA STATE DEPARTMENT OF HEALTH

Introduction

In 2000, the Oklahoma State Department of Health (OSDH) began its surveillance activities of Oklahoma's legally induced terminations of pregnancy (ITOP), also known as legally induced abortions. The OSDH uses these data to monitor the annual number of legal induced abortions and to describe those women receiving legal abortion services in Oklahoma. In doing so, the OSDH produces a partial accounting of pregnancies that terminate in outcomes other than a live born infant. This report follows the requirements outlined in the *Statistical Abortion Reporting Act*¹. This act outlines requirements for: an Annual Abortion Report, Complications of Induced Abortion Report, and an Annual Judicial Bypass of Abortion Parental Consent Summary Report². The Annual Abortion Report includes data from the Individual Abortion Form, which physicians performing abortions are required to complete and submit electronically beginning in April, 2012³. The present report includes data collected by the office of Health Care Information (HCI), Center for Health Statistics, at the OSDH for calendar years 2002-2014.

Methods

For the report years, HCI assembled data submitted to the OSDH by the facilities licensed to perform legal abortions in the state of Oklahoma. These facilities provided data on the number of abortions and the characteristics of women who obtained legal abortions. Legal induced abortion is defined by Oklahoma statute as the "the use or prescription of any instrument, medicine, drug, or any other substance or device intentionally to terminate the pregnancy of a female known to be pregnant with an intention other than to increase the

probability of a live birth, to preserve the life or health of the child after live birth, to remove an ectopic pregnancy, or to remove a dead unborn child who died as the result of a spontaneous miscarriage, accidental trauma, or a criminal assault on the pregnant female or her unborn child."⁴

The individual abortion form, which was implemented in April, 2012, includes multiple variables about women seeking abortion and each abortion procedure including: cost, method of payment, reason for abortion, ultrasound usage, and informed consent, among others. An updated abortion form was implemented in November, 2013 with an additional 16 requirements. These indicators are presented in Tables 9-40 following the 2002-2014 summary statistics.

This document reports on overall and characteristic-specific percentages, which are based only on known values. Single-year and multi-year abortion statistics are included in the report. Abortion ratios, defined as the number of abortions per 1,000 live births, and abortion rates, defined as the number of abortions per 1,000 women in a specified age group, are provided for many demographic characteristics. Population data used to compute abortion rates were obtained from the U.S. Census Bureau.

Women between the ages of 20 and 34 years were placed into 5-year age groups, women less than 20 years of age were placed into a single group, and women greater than or equal to 35 years of age were placed into a single age group (i.e., <20, 20-24, 25-29, 30-34, and ≥35). The number, ratio, and rate of abortions are presented for each age group. Abortion rates for women aged 19 or younger were based on population totals for women aged 10 to 19 years. Rates for women aged 35 or older were based on the population of women aged 35 to

¹ HB 3075, c 163, 1, eff. November 1, 2010.

² HB 3284, c. 276, § 5, eff. November 1, 2010.

³ HB 3284, c. 276, § 4, eff. November 1, 2010.

⁴ Title 63 O.S. Section 1-730.

44 years. Rates for all women who obtained abortions were based on the population of women 15-44 years of age. Age was missing for less than 1 percent of all reported abortions.

Race was classified into five categories: White, Black, American Indian, Asian or Pacific Islander, and Other. There were no records for which race was unavailable, however, ethnicity was not included in this analysis for two reasons. First, there was a large proportion of missing or unknown values (31 percent) in the records submitted through 2011. Second, beginning in April, 2012, data for women's ethnicity was no longer collected on the Individual Abortion Form. Therefore, the abortion numbers, ratios, and rates are presented in this report by race only. Cross-tabulations by race and ethnicity are not presented.

Marital status was classified as either married (women who were married or separated) or unmarried (women who were never married, divorced, or widowed). Abortion numbers, ratios, and rates are presented by marital status. Abortion rates by marital status reflect the number of abortions per 1,000 females aged 15-50 in a specified marital group. This is a non-standard grouping for the population denominator, but is useful to explore general patterns.

Education levels of women who obtained abortions were classified as less than high school education (8th grade through 12th grade, with no diploma), high school graduate or GED⁵ completed, some college (college credit attained with no degree), or college graduate (bachelor's degree and beyond). The number, ratio, and rate of abortions are shown by level of education. Abortion rates by educational attainment represent the number of abortions per 1,000 female population aged 18-44 years.

⁵ General educational development

Again, a non-standard population grouping is used here for review of general trends.

Percent distributions of abortions by previous live births and previous abortion history are presented. Previous live births were grouped into five classes: 0, 1, 2, 3, and 4 or more. Previous abortions were classified as 0, 1, 2, and 3 or more.

Measured in weeks, gestational age at the time of abortion was categorized as ≤ 8 weeks, 9-10 weeks, 11-12 weeks, 13-15 weeks, and ≥ 16 weeks. The number and percent of abortions by length of gestation are included in the report. For select characteristics (i.e., race, age, education, marital status, type of procedure, and live birth and abortion history), gestational age is used as a summary variable.

From January 2002-March 2012, the method of abortion was classified as curettage (suction and sharp), non-surgical medical abortion (RU-486, mifepristone and misoprostol), dilation and evacuation, and "other" procedures. The number and percent of legal abortions for each abortion method are provided. In April 2012, when the new individual abortion form was implemented, the method of abortion categories changed and were classified in the following categories: dilation and curettage, dilation and evacuation, RU 486, suction aspiration, and "other" procedures. In order to combine this data for the purpose of the summary statistics, these categories were combined based on their definitions. The new categories are presented in Tables 6-8 and 13. The previous data classified as "sharp curettage" is included in the "dilation and curettage" category, and previous data classified as "suction curettage" is included in the "suction aspiration" category.

To address concerns regarding confidentiality of women obtaining abortions and the stability of percentages, ratios, and rates, any computed statistic was suppressed when the numerator used in the calculation was less than 5.

Summary 2002-2014 statistics described in this report reflect legal induced abortions to Oklahoma resident women. Statistics presented in Tables 9-40 include data for all abortions which were performed in Oklahoma in 2014, including abortions to non-Oklahoma residents, per the requirements of the 2010 *Statistical Abortion Reporting Act*.

Results

From 2002 to 2014, there have been 74,708 induced abortions (henceforth referred to as abortions) to Oklahoma residents reported to the Oklahoma State Department of Health (OSDH) (Table 1). On average there were 5,852 abortions per year. Over the time period reviewed, the peak year for the number of abortions was 2006. In that year, there were 6,807 abortions reported to the OSDH. The fewest number (4,487) of abortions was recorded in 2014. For the reporting period, the relative decrease in the number of abortions was 27.8 percent.

Oklahoma experienced a decline (31.8percent) in the abortion ratio⁶ between 2002 and 2014 (Table 2). Over this period the abortion ratio dropped from 123.5 abortions per 1,000 live births in 2002 to 84.2 abortions per 1,000 live births in 2014. The abortion ratio peaked in 2006 at 126.0, and then dropped from 2006 to its lowest level in 2014. For the reporting period overall, the abortion ratio was recorded to be 109.3 abortions per 1,000 live births.

The abortion rate⁷ for Oklahoma decreased from 8.5 abortions per 1,000 women aged 15-44 years in 2002 to 5.9 abortions per 1,000 women aged 15-44 years in 2014 (Table 2). Overall, the abortion rate declined 30.1 percent over the reporting period. The abortion rate fluctuated across the 8-year reporting period, reaching a high of 9.4 abortions per 1,000 women aged 15-

44 years in 2006 and a low of 5.9 abortions per 1,000 female population aged 15-44 years in 2014. The abortion rate for the full reporting interval was 8.7 abortions per 1,000 female population aged 15-44 years.

Table 3 displays the number, ratio, and rate of abortions by county of residence for the period of January, 2002 to March, 2012. Beginning in April, 2012, abortion data was no longer collected by county of residence. Oklahoma County Residents received the greatest number of abortions during this time period (19,708), followed by Tulsa County Residents (15,893), representing 31.7 percent and 25.6 percent, respectively, of all abortions to Oklahoma residents.

The fewest number of abortions were reported for Cimarron County (7). The abortion ratios for Oklahoma counties ranged from 7.6 abortions per 1,000 live births (Bryan County) to 153.3 abortions per 1,000 live births (Tulsa County). Abortion rates varied from 0.5 abortions per 1,000 women aged 15-44 years (Bryan County) to 12.0 abortions per 1,000 women aged 15-44 years (Oklahoma County). Caution should be used when interpreting these county level statistics due to the wide variation in the number of abortions reported and the population size for rural counties. In addition, Oklahoma Residents may have sought abortions in other states. Multi-year calculations attempt to smooth the year-to-year fluctuation but this technique does not completely account for this variability.

Women aged 20-24 years obtained 34.2 percent of all abortions during the period 2002 to 2014. Women under 20 years of age obtained 16.4 percent of all abortions, with only a small fraction (<1 percent) of abortions occurring to the youngest of women (<15 years of age). Less than 4 percent of all abortions occurred to women aged 40 or older. The majority of abortions (57.6 percent) occurred to women in the principal childbearing years (ages 20-29) (Table 4). Abortion ratios were highest for

⁶ Number of abortions per 1,000 live births

⁷ Number of abortions per 1,000 women in a specified age group

women aged 35 or older or under 20 years old (141.4 and 142.7, respectively) (Table 5). In contrast, abortion rates were lowest for women in the older age group (Table 5). Women aged 35 or older had an abortion rate of 2.7 per 1,000 female population. Teenage women had the second lowest abortion rate at 4.0 abortions per 1,000 female population. The highest abortion rates were found among women in the age groups 20-24 (14.7 abortions per 1,000 female population) and 25-29 years (11.1 abortions per 1,000 female population). Figure 2 shows over time that teenage women and women 35 years or older have consistently had the highest abortion ratios in Oklahoma. Additional characteristics of women by age can be found in Table 6.

More than two-thirds of abortions were to White women for the years under review. Overall, Black women obtained 18.6 percent of abortions, while another 5.9 percent were accounted for by American Indian women (Table 4). For the reporting period, the abortion ratio for Black women was highest at 213.6 abortions per 1,000 live births, followed by Asian or Pacific Island women at 152.2 abortions per 1,000 live births (Table 5). The abortion ratio for White women was 98.2 per 1,000 live births, with the lowest rate experienced by American Indian women at 56.7 abortions per 1,000 live births. A similar pattern of order was seen for abortion rates (Table 5), with Black women having a rate that was almost 3 times higher than American Indian women and more than twice as high as White women. Abortions are not reported by Hispanic origin due to the large percentage of records for which this characteristic was unknown, and beginning in April, 2012 Hispanic Origin data was no longer collected.

Racial variability was evident when considering the age distribution of the women who obtained abortions (Table 7). Broadly speaking, differences between White and Black women were small. White women had a lower percentage of abortions occurring to ages 20-29

(White, 57.3 percent; Black, 61.5 percent), while Black women had a lower percentage of abortions to women in the oldest age group (age ≥ 35 : White, 11.6 percent; Black, 8.1 percent). American Indian women had the highest percentage of abortions for ages less than 20 years (21.3 percent). Conversely, Asian or Pacific Island women had the lowest percentages of abortions in the younger age groups with approximately 41 percent of this racial group's abortions occurring to women 30 years or older (Table 7).

Examining abortions by educational attainment reveals that women with a high school education or equivalent GED accounted for the largest percentage of abortions (39.6 percent), while women with some college education accounted for the second highest percentage (30.6 percent) (Table 4). College graduates made up 14.1 percent of Oklahoma resident abortions. Over the thirteen years of data included in this report, the distribution of abortions by education was relatively unchanged. The number of abortions per 1,000 women aged 18-44 years was highest for women with a high school diploma or GED (12.1 per 1,000 women aged 18-44) and lowest for women who had graduated from college (5.3 per 1,000 women aged 18-44) (Table 5).

Approximately 80 percent of abortions were to women who were unmarried (Table 4). Black women experienced the highest percentage of abortions to unmarried women, while Asian or Pacific Island women had the lowest percentage (88.2 percent and 54.3 percent, respectively; Table 7). There was an inverse relationship between a woman's age and the percentage of abortions that were to unmarried women, with older women constituting a diminishing percentage of unmarried abortions (Table 6). The abortion ratio and rate for unmarried women were 215.6 abortions per 1,000 live births and 11.0 abortions per 1,000 women aged 15-50 years, respectively (Table 5). The

comparable numbers for married women were 36.8 and 2.5, respectively.

The number and percent of abortions by gestational age for selected characteristics of women who obtained abortions are presented in Table 8. For 2002-2014, 65.2 percent of abortions occurred prior to 9 weeks gestation. More than 90 percent of all abortions occurred at less than 13 weeks gestation. A very small percentage of abortions occurred beyond 16 weeks (3.1 percent). Figure 3 displays abortion timing by age group and indicates that older women were more likely to obtain abortions during the first 8 weeks after becoming pregnant. Teen women were more likely than other age groups to obtain an abortion in the period 9-12 weeks (30.4 percent) or after the 13th week of gestation (11.8 percent; Table 8). Generally speaking, women who were of Asian or Pacific Island descent, older, college educated, married, or primiparous were most likely to obtain abortions during the first 8 weeks of gestation.

Approximately 38 percent of reported abortions were to women who had not had a previous live birth (Table 4). Of the remaining percentage of abortions that occurred to women with a previous live birth, those with one previous live birth accounted for 27.3 percent; women with two previous live births, 21.5 percent; women with three previous live births, 9.0 percent; and women with 4 or more previous live births, 4.4 percent. The abortion ratio was highest for women with two or three previous live births (129.4 and 128.8, respectively) and lowest for women with one previous live birth (105.2 abortions per 1,000 live births) (data not shown).

For the overall reporting period, approximately 63 percent of reported abortions were to women who had no previous abortions (Table 4). Approximately 1 in 4 women obtaining an abortion had one previous abortion (24.7 percent). Of the remaining percentage of abortions that occurred to women with previous

abortions, those with two previous abortions accounted for 8.0 percent; and women with 3 or more accounted for 4.2 percent.

Suction aspiration was the most common type of procedure for abortions between 2002 and 2014, accounting for 65.4 percent of abortions. Nonsurgical medical abortions, which involve the administration of medication to induce abortion, made up 20.7 percent of Oklahoma resident abortions. Dilation and evacuation amounted to just 3.7 percent of all abortions during the reporting period. Sixty-one percent of suction aspiration procedures occurred during the first 8 weeks of gestation (Table 8), while nearly all medical abortions occurred in the first 8 weeks of pregnancy, which is optimal for this type of procedure to be effective at inducing abortion⁸. Approximately 70 percent of Black women who obtained an abortion were treated using the suction aspiration (Table 7). Physicians treating American Indian women and women classified as the “other” racial category were more likely to use medical abortion than were other racial groups (31.8 and 33.9 percent, respectively). Overall, there was little difference by age in the proportion of women who received an abortion by suction aspiration, although there was a slight decrease for women over 35. A higher percentage of teenage women (8.4 percent) than those women aged 25 or older underwent a dilation and curettage procedure when obtaining an abortion. The proportion of women electing a nonsurgical medical abortion increased with age (Table 6). There was little difference by marital status in the type of procedure used for abortion (data not shown).

Over the reporting period, the proportion of abortions by the suction aspiration procedure decreased by approximately 40 percent, while the percentage of non-surgical abortions have increased dramatically. In 2002, non-surgical

⁸ Kulier R. et al. (2011). Medical methods for first trimester abortion. Published online Nov., 2011. The Cochrane Library.

abortions made up only 4.5 percent of all abortions performed in Oklahoma, while in 2014 non-surgical abortions made up approximately 37 percent of all abortions (Figure 4).

Tables 9-40 present required data outlined in the *63 § 1-738m Annual Abortion Report*⁹ section of the 2010 Statistical Abortion Reporting Act. This section presents the 46 requirements as well as the corresponding data.

Discussion

Oklahoma had 74,708 reported abortions in 2002-2014. More than half of the abortions which occurred between January 2002-March 2012 were performed on residents of Oklahoma County and Tulsa County. Comparatively, resident births for these two counties represented 40.7 percent of all births and 37.2 percent of the female childbearing population in Oklahoma during the reporting period.

During the thirteen-year reporting period, the rate of abortions was higher among certain demographics. Namely, women aged 20-29 years, Black women, women with less education and those who were unmarried had higher rates of abortions compared to other women of childbearing age. From 2002-2014, approximately 69 percent of abortions were to White women; however, Blacks and Asians had both a higher abortion rate and ratio during the time period. There were other differences evident in the proportion of abortions for the various racial groups. For instance, compared to women in the other racial categories, Asian women had a higher proportion of abortions for those aged 30 years and older, college graduates, and those who were married. American Indian women had a larger proportion of women under the age of 20 years who had an abortion compared to

the other racial groups, and also were more likely to have a nonsurgical medical abortion.

The number of abortions declined by 27.8 percent over the period 2002-2014, and the abortion rate and ratio dropped by a greater extent (30.6 and 31.8 percent, respectively). The decrease in the abortion ratio was driven by growth in the number of births and reduction in the number of abortions in Oklahoma. The number of births in the state rose 5.9 percent over the reporting period while the number of abortions declined by 27.8 percent. This combination of different trends produced the 31.8 percent decline in the abortion ratio. Direct comparisons to national level abortion data are difficult due to the character of data collection. National reporting suffers from frequent changes in the geographic areas covered, as some states do not report abortion data, while others report data intermittently. For 2011, 49 states reported abortion data to CDC. Among these 49 states, the abortion rate in 2011 was 13.9 abortions per 1,000 women aged 15-44 years, and the abortion ratio was 219 per 1,000 live births. The general patterns in the U.S. measures indicate a downward trend in the number, rate, and ratio of abortions from 2002-2011, which decreased 13 percent, 14 percent, and 12 percent, respectively¹⁰.

There were slight shifts in the demographic distribution of abortions for key characteristics. Percentage of abortions decreased slightly for those aged 25-34 years. Women with some college education and those with college degrees increased their proportion of all abortions, rising from 28.8 percent and 11.6 percent in 2002 to 33.8 percent and 15.2 percent in 2014, respectively. These changes in proportions should be interpreted as general patterns and not as statistically significant changes as no inferential statistics were performed. In the “other” racial group there was

⁹ Full title of section: *63 § 1-738m Annual Abortion Report – Annual Judicial Bypass of Abortion parental Consent Summary*

¹⁰ Pazol K., Creanga A.A., Burley K.D., Hayes B., Jamieson D.J.. 2014. Abortion Surveillance: United States, 2011. CDC Morbidity and Mortality Weekly Report, Vol. 62, No. 41.

a sizable drop from 5.9 percent of all abortions in 2002 across the reporting period until 2011. The “other” racial group saw a significant increase to 6.2 percent in 2012, and 12.9 in 2014 with the implementation of a new abortion form (Table 4). These fluctuations are likely due to changes in how racial data is collected and coded rather than real change in the fraction of abortions for which the other racial category is a source.

Women less than 20 years of age were less likely to obtain their abortions during the first eight weeks of pregnancy compared to older women. For all other age groups, more than 60 percent received their abortions during the first 8 weeks of pregnancy with the highest proportion evident for women aged 35 years and older.

Limitations

These abortion data were subject to a number of limitations. First, abortion data reported here reflect only those reported to the OSDH. As a result, these abortion statistics may underestimate the true, but unknown, number of abortions in Oklahoma. Second, data submitted by these facilities may be incomplete. Third, abortions occurring to Oklahoma residents outside the state were not submitted to OSDH for inclusion in the abortion database. Fourth, due to the large number of missing or unknown values for Hispanic origin, abortion statistics were not included for the ethnicity of Oklahoma women.

Table 1. Number of Legal Induced Abortions by Characteristics of Women, 2002-2014

Characteristic	2002	2003	2004	2005	2006	2007	2008	2009	2010	2011	2012	2013	2014	Total
Total	6,215	6,341	6,230	6,364	6,807	6,363	6,144	6,044	5,641	4,840	4,645	4,587	4,487	74,708
Age (yrs)														
<20	1,159	1,235	1,111	1,095	1,104	1,094	1,020	1,068	866	706	704	596	606	12,364
20-24	2,151	2,210	2,180	2,218	2,447	2,245	2,089	1,998	1,848	1,674	1,543	1,484	1,427	25,514
25-29	1,323	1,393	1,378	1,462	1,547	1,474	1,426	1,356	1,404	1,211	1,156	1,207	1,153	17,490
30-34	859	890	904	895	894	837	846	874	839	667	695	742	770	10,712
≥35	670	613	651	658	754	689	714	660	641	560	538	545	523	8,216
Race														
White	4,159	4,493	4,448	4,551	4,864	4,464	4,323	4,338	3,871	3,433	3,110	2,847	2,672	51,573
Black	1,143	1,138	1,147	1,256	1,304	1,318	1,168	1,063	1,054	909	839	846	814	13,999
American Indian	349	377	371	352	414	367	407	376	389	281	262	250	247	4,442
Asian	198	246	209	181	214	186	167	213	216	136	144	164	171	2,445
Other	366	87	55	24	11	28	79	54	111	81	290	478	579	2,243
Marital status														
Married	1,316	1,329	1,318	1,308	1,414	1,247	1,238	1,217	1,095	915	857	865	790	14,909
Unmarried	4,899	5,012	4,912	5,056	5,393	5,116	4,906	4,827	4,546	3,925	3,788	3,720	3,697	59,797
Education														
<HS	1,151	1,105	1,038	1,038	1,073	1,064	932	1,011	900	683	638	609	604	11,846
HS or GED	2,551	2,611	2,571	2,520	2,765	2,448	2,534	2,407	2,083	1,920	1,795	1,753	1,691	29,649
Some college	1,790	1,821	1,808	1,932	1,995	1,931	1,755	1,774	1,858	1,547	1,487	1,512	1,505	22,715
College graduate	723	804	812	873	974	920	923	852	800	689	725	695	675	10,465
Previous live births														
0	2,382	2,440	2,331	2,425	2,573	2,481	2,321	2,357	2,181	1,912	1,934	1,809	974	28,120
1	1,730	1,782	1,757	1,754	1,884	1,735	1,639	1,574	1,490	1,295	1,188	1,182	1,126	20,136
2	1,327	1,320	1,395	1,387	1,504	1,351	1,323	1,289	1,141	990	920	925	947	15,819
3	526	560	532	551	595	553	586	558	532	413	390	434	397	6,627
≥4	250	239	215	247	251	241	275	266	297	229	213	237	199	3,159
Previous ITOPs														
0	3,846	4,211	3,964	4,129	4,322	3,992	3,879	3,869	3,502	2,918	3,104	3,038	1,658	46,432
1	1,578	1,476	1,532	1,530	1,717	1,585	1,471	1,409	1,404	1,272	989	1,036	962	17,961
2	505	435	475	470	488	513	499	481	466	433	343	335	315	5,758
≥3	286	219	259	235	280	271	295	285	269	217	209	178	190	3,193

Table 2. Number, Ratio¹, and Rate² of Legal Induced Abortions, 2002-2014

Year	Number	Live births ³	Ratio	Population ⁴	Rate
2002	6,215	50,310	123.5	728,492	8.5
2003	6,341	50,874	124.6	726,158	8.7
2004	6,230	51,157	121.8	723,187	8.6
2005	6,364	51,775	122.9	722,500	8.8
2006	6,807	54,010	126.0	725,330	9.4
2007	6,363	54,946	115.8	727,495	8.7
2008	6,144	54,753	112.2	728,647	8.4
2009	6,044	53,705	112.5	732,789	8.2
2010	5,641	52,364	107.7	738,043	7.6
2011	4,840	51,409	94.1	742,805	6.5
2012	4,645	51,859	89.6	747,994	6.2
2013	4,587	53,355	86.0	747,994	6.1
2014	4,487	53,283*	84.2	756,016	5.9
Total	74,708	683,800	109.3	9,547,450	8.7
Percent change, 2002-2014	-27.8	5.9	-31.8	3.8	-30.6

¹ Number of abortions per 1,000 live births

² Number of abortions per 1,000 female population aged 15-44 years

³ Final Birth Statistics, OK2SHARE, OSDH.

⁴ OK2SHARE, Vital Statistics, 2002-2014, number of females aged 15-44 years

* Preliminary 2014 Oklahoma resident birth counts

Table 3. Number, Ratio¹, and Rate² of Legal Induced Abortions by County of Residence, 2002-2012³

County	Number	Ratio	Rate	County	Number	Ratio	Rate
Adair	93	26.1	2.0	LeFlore	270	39.0	2.7
Alfalfa	17	30.2	2.1	Lincoln	270	61.6	4.0
Atoka	32	17.7	1.2	Logan	398	78.9	4.6
Beaver	15	20.5	1.4	Love	46	34.6	2.5
Beckham	238	64.7	5.8	McClain	415	89.1	6.2
Blaine	78	47.2	4.1	McCurtain	64	12.1	0.9
Bryan	47	7.6	0.5	McIntosh	186	78.4	5.4
Caddo	360	76.8	6.3	Major	45	44.9	3.3
Canadian	1,527	96.6	6.4	Marshall	42	19.3	1.5
Carter	422	57.4	4.4	Mayes	409	69.5	5.0
Cherokee	588	84.9	5.4	Murray	102	56.6	4.0
Choctaw	38	15.7	1.3	Muskogee	1,136	102.2	7.6
Cimarron	7	19.2	1.6	Noble	77	49.0	3.4
Cleveland	4,192	133.7	6.8	Nowata	100	74.1	4.9
Coal	24	29.4	2.2	Okfuskee	127	74.1	5.9
Comanche	2,491	114.2	9.0	Oklahoma	19,708	149.1	12.0
Cotton	55	68.9	4.5	Okmulgee	626	106.7	7.8
Craig	170	84.2	6.0	Osage	435	86.1	4.9
Creek	910	94.3	6.5	Ottawa	249	50.1	3.8
Custer	395	87.6	6.1	Pawnee	181	81.1	5.6
Delaware	216	47.3	3.0	Payne	1,310	132.8	6.2
Dewey	35	55.7	4.3	Pittsburg	421	70.2	5.1
Ellis	16	31.0	2.4	Pontotoc	392	67.4	4.8
Garfield	690	67.1	5.6	Pottawatomie	844	82.0	5.4
Garvin	295	73.2	5.4	Pushmataha	98	65.3	4.6
Grady	508	72.8	4.7	Roger Mills	23	42.3	3.9
Grant	20	40.1	2.4	Rogers	978	92.2	5.5
Greer	27	37.6	2.9	Seminole	212	54.4	4.2
Harmon	9	19.7	1.6	Sequoyah	291	59.9	3.4
Harper	20	36.2	3.1	Stephens	314	51.5	3.6
Haskell	90	52.3	3.8	Texas	61	14.4	1.4
Hughes	85	46.9	3.6	Tillman	57	46.8	3.7
Jackson	281	56.8	4.7	Tulsa	15,893	153.3	11.8
Jefferson	30	33.8	2.5	Wagoner	704	75.6	4.8
Johnston	51	32.1	2.4	Washington	576	84.1	5.8
Kay	338	45.0	3.7	Washita	82	49.5	3.7
Kingfisher	132	60.1	4.4	Woods	57	53.0	3.2
Kiowa	58	46.3	3.3	Woodward	236	72.8	6.1
Latimer	54	41.5	2.4				

¹Number of abortions per 1,000 live births

²Number of abortions per 1,000 female population aged 15-44 years

³Data includes January 2002-March, 2012. Beginning in April, 2012 information on abortion by county of residence was not collected.

Table 4. Percent of Legal Induced Abortions by Characteristics of Women, 2002-2014

Characteristic	2002	2003	2004	2005	2006	2007	2008	2009	2010	2011	2012	2013	2014	Total
Age (yrs)														
<20	18.8	19.5	17.9	17.3	16.4	17.3	16.7	17.9	15.5	14.7	15.2	13.0	13.4	16.4
20-24	34.9	34.9	35.0	35.1	36.3	35.4	34.3	33.5	33.0	34.7	33.3	32.4	32.0	34.2
25-29	21.5	22.0	22.1	23.1	22.9	23.3	23.4	22.8	25.1	25.1	24.9	26.4	25.8	23.7
30-34	13.9	14.0	14.5	14.1	13.3	13.2	13.9	14.7	15.0	13.8	15.0	16.2	17.2	14.5
≥35	10.9	9.7	10.5	10.4	11.2	10.9	11.7	11.1	11.5	11.6	11.6	11.9	11.6	11.1
Race														
White	66.9	70.9	71.4	71.5	71.5	70.2	70.4	71.8	68.6	70.9	67.0	62.1	60.8	68.8
Black	18.4	17.9	18.4	19.7	19.2	20.7	19.0	17.6	18.7	18.8	18.1	18.5	17.3	18.6
American Indian	5.6	5.9	6.0	5.5	6.1	5.8	6.6	6.2	6.9	5.9	5.6	5.5	5.2	5.9
Asian	3.2	3.9	3.4	2.8	3.1	2.9	2.7	3.5	3.8	2.8	3.1	3.6	3.8	3.3
Other	5.9	1.4	0.9	0.4	0.2	0.4	1.3	0.9	2.0	1.7	6.2	10.4	12.9	3.4
Marital status														
Married	21.2	21.0	21.2	20.6	20.8	19.6	20.1	20.1	19.4	18.9	18.4	18.9	17.8	19.8
Unmarried	78.8	79.0	78.8	79.4	79.2	80.4	79.9	79.9	80.6	81.1	81.6	81.1	82.2	80.2
Education														
<HS	18.5	17.4	16.7	16.3	15.8	16.7	15.2	16.7	16.0	14.1	13.7	13.3	13.3	15.7
HS or GED	41.0	41.2	41.3	39.6	40.6	38.5	41.2	39.8	36.9	39.7	38.6	38.4	37.8	39.6
Some college	28.8	28.7	29.0	30.4	29.3	30.3	28.6	29.4	32.9	32.0	32.0	33.1	33.8	30.6
College graduate	11.6	12.7	13.0	13.7	14.3	14.5	15.0	14.1	14.2	14.2	15.6	15.2	15.2	14.1
Previous live births														
0	38.3	38.5	37.4	38.1	37.8	39.0	37.8	39.0	38.7	39.5	41.6	39.4	26.7	37.8
1	27.8	28.1	28.2	27.6	27.7	27.3	26.7	26.0	26.4	26.8	25.6	25.8	30.9	27.3
2	21.4	20.8	22.4	21.8	22.1	21.2	21.5	21.3	20.2	20.5	19.8	20.2	26.0	21.5
3	8.5	8.8	8.5	8.7	8.7	8.7	9.5	9.2	9.4	8.5	8.4	9.5	10.9	9.0
≥4	4.0	3.8	3.5	3.9	3.7	3.8	4.5	4.4	5.3	4.7	4.6	5.2	5.5	4.4
Previous ITOPs														
0	61.9	66.4	63.6	64.9	63.5	62.8	63.1	64.0	62.1	60.3	66.8	66.2	54.6	63.1
1	25.4	23.3	24.6	24.0	25.2	24.9	23.9	23.3	24.9	26.3	21.3	22.6	31.7	24.7
2	8.1	6.9	7.6	7.4	7.2	8.1	8.1	8.0	8.3	8.9	7.4	7.3	10.4	8.0
≥3	4.6	3.5	4.2	3.7	4.1	4.3	4.8	4.7	4.8	4.5	4.5	3.9	3.3	4.2

Table 5. Number, Ratio¹, and Rate² of Legal Induced Abortions by Characteristics of Women, 2002-2014

Characteristic	Number	Live births	Ratio	Population ³	Rate
Total	74,708	577,162	112.7	8,043,440	8.7
Race					
White	51,573	525,302	98.2	7,369,362	7.0
Black	13,998	65,529	213.6	891,501	15.7
American Indian	4,442	78,338	56.7	1,041,064	4.3
Asian	2,445	17,283	152.2	253,545	9.6
Age (yrs)					
<20	12,364	86619	142.7	3,126,386	4.0
20-24	25,514	216956	117.6	1,739,183	14.7
25-29	17,489	198,690	88.0	1,582,655	11.1
30-34	10,712	123,247	86.9	1,387,389	7.7
≥35	8,216	58,089	141.4	3,059,702	2.7
Education⁴					
<HS	11,845	NA	NA	1,104,956	10.7
HS or GED	29,649	NA	NA	2,453,126	12.1
Some college	22,715	NA	NA	3,064,175	7.4
College graduate	10,465	NA	NA	1,991,697	5.3
Marital Status⁵					
Married ⁶	14,909	405,444	36.8	5,865,850	2.5
Unmarried ⁷	59,796	277,340	215.6	5,455,502	11.0

¹Number of abortions per 1,000 live births

²Number of abortions per 1,000 female population aged 15-44

³U.S. Census Bureau, number of females aged 15-44

⁴Includes females aged 18-44 years

⁵Number of abortions per 1,000 female population aged 15-50

⁶Now married including spouse absent

⁷Never married, widowed, divorced

Table 6: Number and Percent (%) of Legal Induced Abortions by Age Group and Selected Characteristics, 2002-2014

Characteristic	Age group (yrs)				
	<20	20-24	25-29	30-34	≥35
Race					
White	8,598 (69.4)	17,662 (69.2)	11,766 (67.3)	7,333 (68.5)	5,929 (72.3)
Black	2,288 (18.5)	5,015 (19.7)	3,529 (20.2)	1,944 (18.1)	1,130 (13.8)
American Indian	943 (7.6)	1,502 (5.9)	1,022(5.8)	569 (5.3)	387 (4.7)
Asian	210 (1.7)	646 (2.5)	581 (3.3)	491 (4.6)	505 (6.2)
Other	324 (2.6)	687 (2.7)	589 (3.4)	374 (3.5)	255 (3.1)
Education					
<HS	5,645 (45.7)	2,817 (11.0)	1,778(10.2)	946 (8.8)	596(7.3)
HS or GED	4,490 (36.3)	10,947 (42.9)	6,877 (39.3)	4,051(37.8)	3,113 (38.0)
Some college	2,173 (17.6)	9,548 (37.4)	5,503 (31.5)	3,177 (29.7)	2,189 (26.7)
College graduate	51 (0.4)	2,195 (8.6)	3,324 (19.0)	2,532 (23.7)	2,294 (28.0)
Marital status					
Married	393 (3.2)	3,288 (12.9)	4,344 (24.8)	3,510 (32.8)	3,297(40.2)
Unmarried	11,971 (96.8)	22,225 (87.1)	13,144 (75.2)	7,201 (67.2)	4,905 (59.8)
Previous live births					
0	9,787 (80.8)	11,580(46.0)	4,267 (24.6)	1,500(14.1)	823 (10.1)
1	1,925 (15.9)	8,220 (32.7)	5,236 (30.2)	2,789 (26.2)	1,854 (22.7)
2	358 (3.0)	4,080 (16.2)	4,925 (28.4)	3,519 (33.0)	2,847 (34.9)
3	34 (0.3)	1,046 (4.2)	2,079 (12.0)	1,828 (17.1)	1,603 (19.6)
≥4	13 (0.1)	239 (0.9)	817 (4.7)	1,023 (9.6)	1,042 (12.8)
Previous induced abortions					
0	10,528 (87.3)	17,135 (68.5)	9,409 (54.8)	5,153 (48.9)	3,951(48.8)
1	1,359 (11.2)	5,842 (23.4)	4,958 (28.9)	3,204 (30.4)	2,492 (30.8)
2	168 (1.4)	1,493 (6.0)	1,768 (10.3)	1,314 (12.5)	984 (12.1)
≥3	34 (0.3)	543 (2.2)	1,049(6.1)	866 (8.2)	674 (8.3)
Gestational age (wks)					
≤8	7,147 (57.8)	16,391 (64.3)	11,737 (67.1)	7,327 (68.4)	5,815 (70.9)
9-10	2,480 (20.1)	4,313 (16.9)	2,848 (16.3)	1,665 (15.5)	1,192 (14.5)
11-12	1,271 (10.3)	2,429(9.5)	1,477 (8.4)	879 (8.2)	575 (7.0)
13-15	945 (7.6)	1,576 (6.2)	940 (5.4)	539 (5.0)	411 (5.0)
≥16	519 (4.2)	801 (3.1)	481 (2.8)	302 (2.8)	213(2.6)
Type of Procedure					
Suction Aspiration	8,408 (68.1)	16,944 (66.5)	11,559 (66.2)	6,961 (65.1)	5,182 (63.2)
RU-486	1,991 (16.1)	4,844 (19.0)	3,650 (20.9)	2,298 (21.5)	1,978 (24.1)
Dilation and Curettage	1,039 (8.4)	1,829(7.2)	1,108 (6.3)	728 (6.8)	521 (6.4)
Dilation and Evacuation	612 (5.0)	964 (3.8)	607 (3.5)	344 (3.2)	254 (3.1)
Other	303 (2.5)	898 (3.5)	546 (3.1)	364 (3.4)	263 (3.2)

Table 7. Number and Percent (%) of Legal Induced Abortions by Race and Selected Characteristics, 2002-2014

Characteristic	Race				
	White	Black	Am. Indian	Asian	Other
Age (yrs)					
<20	8,598 (16.8)	2,288 (16.5)	943 (21.3)	210 (8.6)	324 (14.5)
20-24	17,662 (34.4)	5,015 (36.1)	1,502 (33.8)	646 (26.6)	687 (30.8)
25-29	11,766 (22.9)	3,529 (25.4)	1,022 (23.0)	581 (23.9)	589 (26.4)
30-34	7,333 (14.3)	1,944 (14.0)	569 (12.8)	491 (20.2)	374 (16.8)
≥35	5,929 (11.6)	1,130 (8.1)	387 (8.7)	505 (20.8)	255 (11.4)
Education					
Less than HS	8,361 (16.2)	1,807(12.9)	840 (18.9)	273 (11.2)	564 (25.2)
HS or GED	20,292 (39.4)	5,527 (39.5)	2,017 (45.4)	859 (35.2)	950 (42.5)
Some college	15,614 (30.3)	4,904 (35.0)	1,092 (24.6)	650 (26.6)	454 (20.3)
College graduate	7,288 (14.1)	1,754(12.5)	492 (11.1)	661 (27.1)	268 (12.0)
Marital Status					
Married	10,701 (20.8)	1,655 (11.8)	818 (18.4)	1,118 (45.7)	616 (27.5)
Unmarried	40,869 (79.2)	12,342 (88.2)	3,624 (81.6)	1,327 (54.3)	1,627 (72.5)
Previous Live Births					
0	20,431 (40.1)	4,311 (31.1)	1,652 (37.3)	1,033 (42.9)	692 (31.7)
1	13,689 (26.9)	4,208 (30.3)	1,184 (26.7)	505 (21.0)	546 (25.0)
2	10,743 (21.1)	3,053 (22.0)	961 (21.7)	550 (22.8)	510 (23.4)
3	4,287(8.4)	1,472 (10.6)	402 (9.1)	203 (8.4)	263(12.1)
≥4	1,810 (3.6)	828 (6.0)	232 (5.2)	118 (4.9)	171 (7.8)
Previous ITOPS					
0	32,679 (64.6)	7,925 (57.4)	2,836 (64.2)	1,519 (63.6)	1,469 (69.2)
1	12,200 (24.1)	3,684 (26.7)	1,051 (23.8)	586 (24.5)	437 (20.6)
2	3,747 (7.4)	1,340 (9.7)	372 (8.4)	173 (7.2)	126 (5.9)
≥3	1,981(3.9)	850 (6.2)	159 (3.6)	111 (4.6)	92 (4.3)
Gestational Age (wks)					
≤8	34,839 (67.6)	7,981 (57.0)	2,386 (53.7)	1,876 (76.7)	1,604 (71.6)
9-10	8,297 (16.1)	2,838 (20.3)	848 (19.1)	299 (12.2)	293 (13.1)
11-12	4,274 (8.3)	1,555 (11.1)	538 (12.1)	128 (5.2)	171 (7.6)
13-15	2,716 (5.3)	1,056 (7.5)	445 (10.0)	87 (3.6)	126 (5.6)
≥16	1,436 (2.8)	568 (4.1)	224 (5.0)	55 (2.2)	47 (2.1)
Type of Procedure					
Suction Aspiration	34,538 (67.0)	9,824 (70.3)	2,264 (51.0)	1,643 (67.3)	1,068 (47.8)
RU-486	10,276 (19.9)	1,910 (13.7)	1,411 (31.8)	498 (20.4)	757 (33.9)
Dilation and Curettage	3,206 (6.4)	1146 (8.2)	516 (11.6)	120 (4.9)	254 (11.4)
Dilation and Evacuation	1,707 (3.3)	708 (5.1)	205 (4.6)	71 (2.9)	107 (4.8)
Other	1,790 (3.5)	393(2.8)	41 (0.9)	109 (4.5)	50 (2.2)

Table 8. Number and Percent (%) of Legal Induced Abortions by Gestational Age and Selected Characteristics, 2002-2014

Characteristic	Gestational age (wks)				
	≤ 8 wks	9-10 wks	11-12 wks	13-15 wks	≥ 16 wks
Total	48,691 (65.2)	12,576 (16.8)	6,666 (8.9)	4,430 (5.9)	2,329 (3.1)
Race					
White	34,839 (67.6)	8,297 (16.1)	4,274 (8.3)	2,716 (5.3)	1,436 (2.8)
Black	7,981 (57.0)	2,838(20.3)	1555 (11.1)	1056 (7.5)	568 (4.1)
American Indian	2,386 (53.7)	848 (19.1)	538 (12.1)	445 (10.0)	224 (5.0)
Asian	1,876 (76.7)	299 (12.2)	128 (5.2)	87 (3.6)	55 (2.2)
Other	1,604 (71.6)	293 (13.1)	171 (7.6)	126 (5.6)	47 (2.1)
Age (yrs)					
<20	7,147 (57.8)	2,480 (20.1)	1,271 (10.3)	945 (7.6)	519 (4.2)
20-24	16,391 (64.3)	4,313 (16.9)	2,429 (9.5)	1,576 (6.2)	801 (3.1)
25-29	11,737 (67.1)	2,848 (16.3)	1,477 (8.4)	940(5.4)	481 (2.8)
30-34	7,327 (68.4)	1,665 (15.5)	879 (8.2)	539(5.0)	302 (2.8)
≥35	5,815 (70.9)	1,192 14.5)	575 (7.0)	411 (5.0)	213 (2.6)
Education					
<HS	6,728 (56.8)	2,407 (20.3)	1,299 (11.0)	912 (7.7)	497 (4.2)
HS or GED	17,970 (60.6)	5,367 (18.1)	2,913 (9.8)	2,217 (7.5)	1,178 (4.0)
Some college	15,948 (70.2)	3,494 (15.4)	1,856 (8.2)	949 (4.2)	463 (2.0)
College graduate	8,023 (76.7)	1,307 (12.5)	595 (5.7)	348 (3.3)	187 (1.8)
Marital Status					
Married	10,443 (70.1)	2,293 (15.4)	1,085 (7.3)	705 (4.7)	380 (2.5)
Unmarried	38,247 (64.0)	10,283 (17.2)	5,580 (9.3)	3,725 (6.2)	1,949 (3.3)
Previous Live Births					
0	18,982 (67.5)	4,529 (16.1)	2,199 (7.8)	1,580 (5.6)	827 (2.9)
1	12,873 (63.9)	3,472 (17.2)	1,928 (9.6)	1,228 (6.1)	631 (3.1)
2	10,296 (65.1)	2,669 (16.9)	1,435 (9.1)	935 (5.9)	481 (3.0)
3	4,071 (61.4)	1,227 (18.5)	654 (9.9)	422 (6.4)	252 (3.8)
≥4	1,791 (56.7)	582 (18.4)	382 (12.1)	265 (8.4)	138 (4.4)
Previous Induced Abortions					
0	30,191 (65.0)	7,763 (16.7)	4,082(8.8)	2,895 (6.2)	1,492 (3.2)
1	11,642 (64.8)	3,103 (17.3)	1,647(9.2)	1,003 (5.6)	564 (3.1)
2	3,672 (63.8)	994 (17.3)	546 (9.5)	369 (6.4)	176 (3.1)
≥3	2,108 (66.1)	536 (16.8)	292 (9.2)	161 (5.0)	94 (2.9)
Type of Procedure					
Suction Aspiration	30,410 (61.6)	11,822 (24.0)	6,136 (12.4)	737 (1.5)	230 (0.5)
RU-486	14,659 (98.7)	135 (0.9)	34 (0.2)	9 (0.1)	9 (0.1)
Dilation and Curettage	1,047 (20.0)	545 (10.4)	248 (4.7)	2,225 (42.4)	1,178 (22.5)
Dilation and Evacuation	149 (5.4)	62 (2.4)	242 (8.7)	1,447 (51.9)	897 (31.6)
Other	2,358 (99.0)	11 (0.5)	*	6 (0.3)	*

Figure 1. Abortion ratio* by age group for women who obtained a legal abortion: Oklahoma, 2002-2014

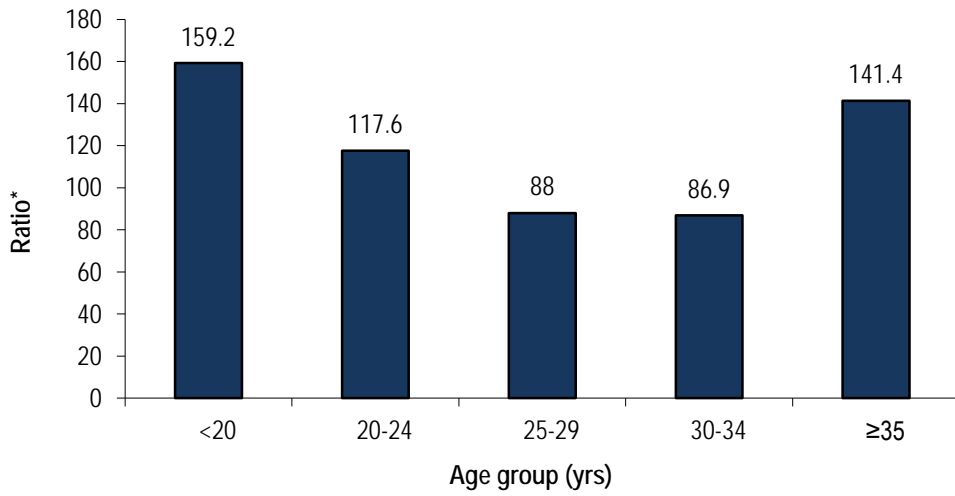
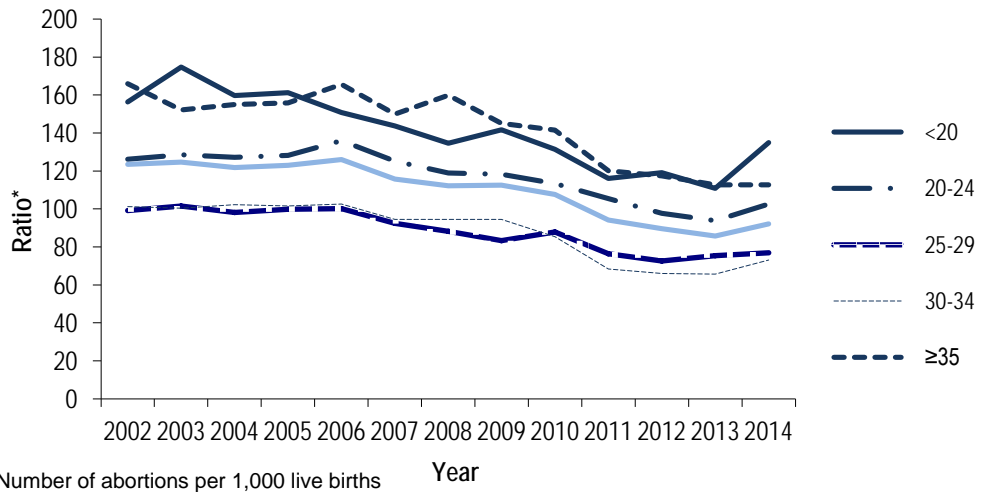


Figure 2. Abortion ratio* by age group for women who obtained a legal abortion, 2002-2014



*Number of abortions per 1,000 live births

Figure 3. Percentage of abortions by timing and age group of women, 2002-2014

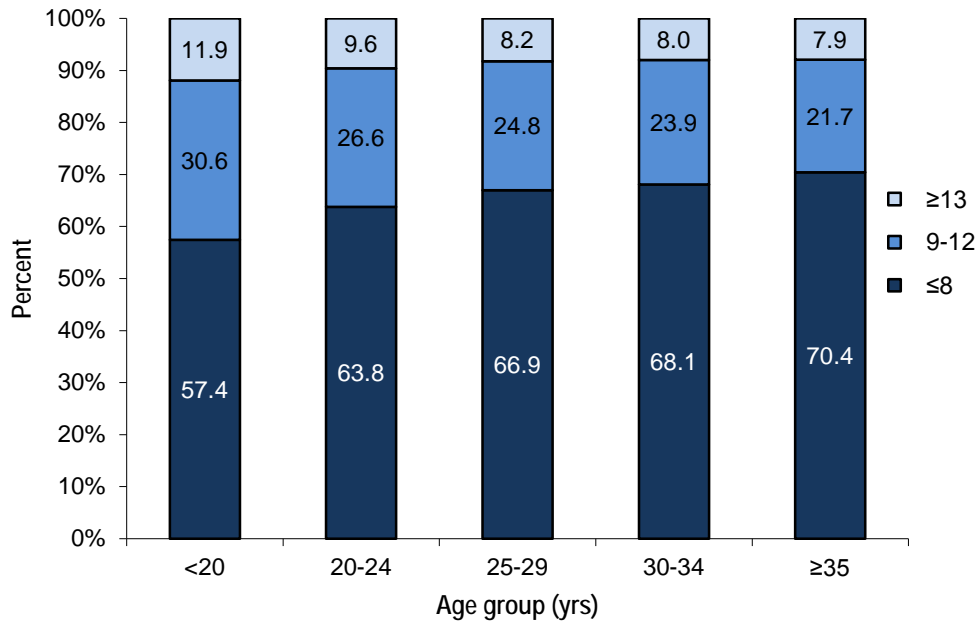
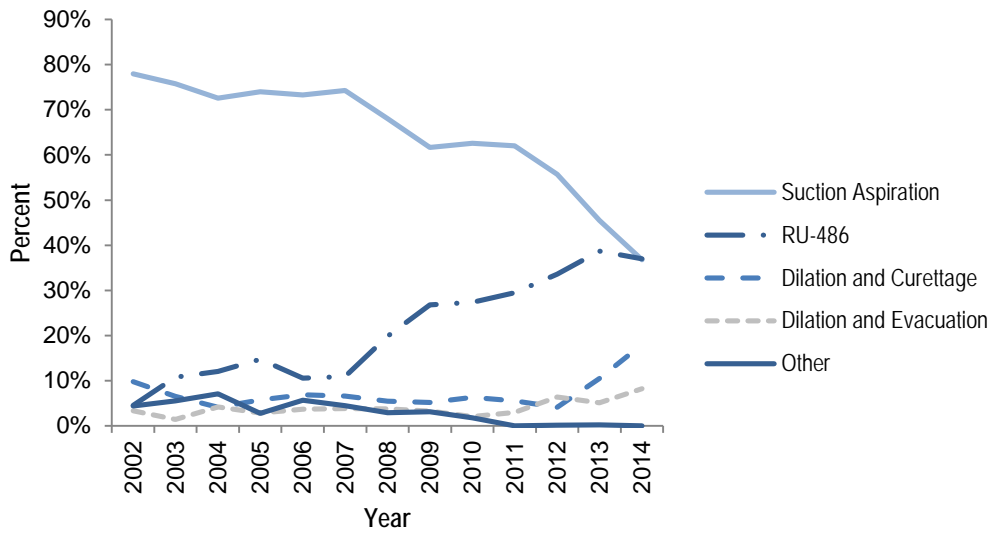


Figure 4. Percentage of abortions by method, 2002-2014



2010 Statistical Abortion Reporting Act Requirements Section

This section of the Annual Abortion Report outlines legal induced abortion data collected in accordance with the 2010 Statistical Abortion Reporting Act (the Act) (HB 3284, c. 276, 1. Eff. November, 1 2010). According to the Act, beginning in June 1, 2013, the Oklahoma State Department of Health (OSDH) is required to publish on its website an Annual Abortion Report that includes both new annual data and statistics for all previous calendar years for which abortion-reporting requirements have been in effect. The tables below outline data from all abortions performed in Oklahoma in 2013 (including Oklahoma residents and non-Oklahoma residents).

The Act also requires the OSDH to submit an Annual Judicial Bypass of Abortion Parental Consent Summary Report¹¹. In 2014, OSDH did not receive any Annual Judicial Bypass Forms. Tables 32 and 33 contain data on Judicial Waivers of parental notice or consent.

To address concerns regarding confidentiality of women obtaining abortions and the stability of percentages, ratios, and rates, any computed statistics were suppressed when the numerator used in the calculation was less than 5. These instances are marked with a double asterisk (**).

Requirement 1: The number of induced abortions performed in the previous calendar year broken down by month and county* in which the abortion was performed.

Table 1. The number of induced abortions performed in 2014, by month

Month	Number of Abortions	Percent
January	494	10.0
February	401	8.2
March	435	8.8
April	422	8.6
May	429	8.7
June	384	7.8
July	404	8.2
August	415	8.4
September	403	8.2
October	440	9.0
November	284	5.8
December	405	8.2
Total	4916	100.0

*There were a total 4,916 abortions in the state of Oklahoma in 2014. However, we cannot report abortions by county of occurrence, as this may lead to physician identification.

¹¹ Title 63 O.S. Section 1-738I

Requirement 2: The number of abortions classified by: a) the state or foreign country of residence of the mother; b) the age, marital status, and race of the mother, and c) the number of years of education of the mother.

Table 10. Selected Demographics of Mother

State of Residence	Number of Abortions	Percent
Arkansas	147	3.0
Arizona (AZ)	**	
Colorado (CO)	**	
Florida (FL)	**	
Idaho (ID)	**	
Indiana (IN)	**	
Kansas (KS)	41	0.8
Louisiana (LA)	**	
Massachusetts	**	
Michigan (MI)	**	
Missouri (MO)	83	1.7
Mississippi (MS)	**	
New Mexico (NM)	**	
Ohio (OH)	**	
Oklahoma (OK)	4487	91.3
Oregon (OR)	**	
Pennsylvania	**	
South Dakota (SD)	**	
Tennessee (TN)	**	
Texas (TX)	136	2.8
Total	4914	100.0
Age of Mother (yrs)	Number of Abortions	Percent
<20	655	13.5
20-24	1,517	31.3
25-29	1,266	26.1
30-34	845	17.4
>35	570	11.7
Total	4,853	100.0
Marital Status (5 groups)	Number of Abortions	Percent
Divorced	422	8.6
Married	683	13.9
Never Married	3,600	73.2
Separated	190	3.9
Widowed	20	0.4
Total	4915	100.0
Race of Mother	Number of Abortions	Percent
American Indian or Alaskan Native	256	5.2
Asian/Pacific Islander	187	3.8
Black	851	17.3
Other	631	12.0
White	2,986	60.8
Total	4,911	100.0

Table 10. Selected Demographics of Mother (cont.)

Level of Education	Number of Abortions	Percent
8th grade or less	70	1.4
Some high school	580	11.8
High school graduate or GED completed	1851	37.8
Some college credit	1656	33.8
Bachelor's degree (e.g. BA, AB, BS)	559	11.4
Post grad work	186	3.8
Total	4902	100.0

Requirement 3: *The number of abortions classified by: a) the number of previous pregnancies of the mother; b) previous live births to the mother, and c) previous miscarriages, and d.) previous induced abortions.*

Table 11. Number of abortions by previous pregnancies, previous live births, previous miscarriages, and previous induced abortions

Previous Pregnancies	Number of Abortions	Percent
0	1486	30.3
1	1022	20.8
2	916	18.6
3	650	13.2
4	406	8.3
5 to 9	407	8.3
10 or more	25	0.5
Total	4912	100.0
Previous Live Births		
0	1082	27.1
1	1222	30.6
2	1037	26.0
3	430	10.8
4 or more	218	5.5
Total	3989	100.0
Previous Miscarriages		
0	2318	74.4
1	612	19.7
2	126	4.0
3 or more	58	1.9
Total	3114	100.0
Previous Abortions		
0	1856	55.5
1	1050	31.4
2	338	10.1
3 or more	103	3.1
Total	3347	100.0

Requirement 4: The number of abortions by week of gestational age.

Table 12. Gestational Age (weeks)

Gestational age (wks)	Number of Abortions	Percent
Less than 8 wks	3692	75.2
9-10 wks	551	11.2
11-12 wks	382	7.8
13-15 wks	223	4.5
16-20 wks	61	1.2
Total	4909	100.0

Requirement 5: The number of abortions performed by each reported method.

Table 13. Abortion Method

Method	Number of Abortions	Percent
Dilation and Curettage	880	17.9
Dilation and Evacuation	404	8.2
RU 486	1813	37.0
Suction Aspiration	1806	36.8
Other	5	0.1
Total	4908	100.0

Requirement 6: The number of abortions resulting in an infant born alive; of these, the number of cases in which life sustaining measures were taken; and a statistical summary of the length of survival of such infants.

Table 14. Life Sustaining Measures

Life Sustaining Measures	Number of Abortions	Percent
Infants Born Alive	0	0.0
<i>Cases Life Sustaining Measures Taken</i>	Not Applicable	
<i>Length of Survival of Infants</i>	Not Applicable	

Requirement 7: The number of cases in which anesthesia was administered to the mother and the number of each type of anesthesia.

Table 15. Anesthesia Usage – Mother

Anesthesia Use	Number of Abortions	Percent
Yes	2,227	45.4
<i>Sodium Brevital</i>	2,220	99.7
No	2,682	54.6
Total	4,909	100.0

Requirement 8: *The number of cases in which anesthesia was administered to the unborn child, and the number of each type of anesthesia and of each method of administration.*

Table 16. Anesthesia Usage – Fetus

Anesthesia Use	Number of Abortions	Percent
Yes	*13	0.3
Type	0	0
No	4,892	100.0
Total	4,982	100.0

*Based on the gestational age, it is unlikely that Anesthesia was administered to these fetuses

Requirement 9: *The number of each reported method of fetal disposal.*

Table 17. Fetal Disposal Method

Fetal Disposal Method	Number of Abortions	Percent
Home	631	12.8
Incineration	1810	36.8
Medical waste	2467	50.2
Other	**	

Requirement 10: The reasons reported for the abortions, and the number of times each reason was cited.

Table 18. Reasons Given for Abortion

Reason	Frequency	Percent
Patient was asked why she is seeking an abortion, but she declined to give a reason:	2942	34.7
Mother is not ready for a, or another, child:	99	1.2
Mother cannot afford the child:	359	4.2
Mother is unmarried:	276	3.3
Having a baby would dramatically change the life of the mother:	286	3.4
Mother has other children or dependents:	802	9.5
Having a baby would interfere with the education of the mother:	269	3.2
Having a baby would interfere with the job/employment/career of the mother:	672	7.9
Mother is a student or planning to be a student:	216	2.5
Mother cannot afford child care:	141	1.7
Mother does not have enough support from a husband or partner:	47	0.6
Mother is having relationship problems:	87	1.0
Mother does not want to be a single mother:	81	1.0
Mother cannot afford the basic needs of life:	106	1.2
Mother cannot leave job to care for a baby:	102	1.2
Mother is unemployed:	43	0.5
Mother is not certain of relationship with the father of the child:	91	1.1
Mother does not feel mature enough to raise a, or another, child:	33	0.4
Mother would have to find a new place to live:	158	1.9
Physical health of the mother is at risk:	22	0.3
Mother has completed her childbearing:	547	6.4
Partner and mother are unable to or do not want to get married:	94	1.1
The relationship or marriage of the mother may soon break up:	14	0.2
Mother is not currently in a relationship:	30	0.4
Husband or partner is unemployed:	43	0.5
Mother does not want people to know that she had sex or became pregnant:	145	1.7
There may be possible problem affecting the health of the fetus:	54	0.6
Emotional health of the mother is at risk:	**	
Husband or partner wants mother to have an abortion:	59	0.7
Mother is currently or temporarily on welfare or public assistance:	141	1.7
Husband or partner is abusive to the mother or her children:	79	0.9
Parents want mother to have an abortion:	90	1.1
Pregnancy was a result of forcible rape:	**	
Other	353	4.2
Total	8481	100.0

* There are more than 4916 answers, because the individual could provide multiple answers.

Requirement 11: The number of abortions paid for by: a) Private Insurance; b) Public health plan; c) Medicaid; d) Private pay; or e) other.

Table 19. Abortion Payment Method

Payment Method	Number of Abortions	Percent
Private payment	4905	99.9
Private Insurance	**	
Medicaid	**	
Other	0	0.0
Total	4912	100.0

Requirement 12: The number of abortions in which medical health insurance coverage was under: a) a fee-for-service insurance company; b) a managed care company, or c) other

Table 20. Type of Medical Health Insurance

Payment Method	Number of Abortions	Percent
Fee-for-Service	**	
Managed Care	**	
Other	0	0.0

Requirement 13: A statistical summary of the fees collected

Table 21. Summary of Fees

Summary of Fees	Number of Abortions	Percent
\$0-500	14	0.3
\$501-600	3937	80.1
\$601-700	541	11.0
\$701-800	179	3.6
\$800+	243	4.9
Total	4914	100.0

Requirement 14: Specialty area of medicine of the physician

Table 22. Physician Specialty Area

Physician specialty area	Number of Abortions	Percent
Obstetrics-Gynecology	2,829	57.7
General Practice	2,078	42.3
Total	4,907	100.0

Requirement 15: *The number of abortions in which ultrasound equipment was used before, during, or after the abortion, and the number of times vaginal ultrasound, abdominal ultrasound, or both were used in each of the three circumstances.*

Table 23. Ultrasound Equipment Usage

Ultrasound Equipment Usage	Number of Abortions	Percent
Before Abortion:	4,915	80.6
During Abortion:	414	6.8
After Abortion:	771	12.6
Total*	6,467	100.0
Type of Ultrasound used before abortion:		
Vaginal	3,433	69.8
Abdominal	1,441	29.3
Both Vaginal/Abdominal	41	0.8
No Ultrasound equipment used	0	0.0
Total	4,915	100.0
Type of Ultrasound used during abortion:		
Vaginal	**	
Abdominal	412	8.4
Both Vaginal/Abdominal	**	
No Ultrasound equipment used	4,502	91.6
Total	4,916	100.0
Type of Ultrasound used after abortion:		
Vaginal	**	
Abdominal	770	15.7
Both Vaginal/Abdominal	**	
No Ultrasound equipment used	4,145	84.3
Total	4,916	100.0

* Total Ultrasound Equipment Usage higher than 4916 due to multiple ultrasounds.

Requirement 16: *The number of abortions before which an ultrasound was performed by: a) the physician performing the abortion, b) a physician other than the physician performing the abortion, or c) other.*

Table 24: Ultrasound Performed by

The number of abortions before which an ultrasound was performed by:	Number of Abortions	Percent
The physician performing the abortion	2,851	58.0
A physician other than the physician performing the abortion	6	0.1
Other	2059	41.9
Total	4,916	100.0

Requirement 17: *The number of abortions resulting in reported complications, and of those, how many were reported by the physician who performed the abortion, and how many were reported by another physician, the types of reported complications, and the number of each type based on data which shall be compiled and transmitted to the State Department of Health by the State Board of Medical Licensure and Supervision and the State Board of Osteopathic Examiners.*

The number of abortions resulting in complications:	Frequency	Percent
Reported by physician who performed abortion	24	85.7
Another physician	**	
Types of Complications*		
<i>Failed termination of pregnancy (continued viable pregnancy)</i>	17	
<i>Heavy bleeding/hemorrhage with estimated blood loss of greater than or equal to 500cc</i>	7	
<i>Other</i>	**	

*More than one complication can be reported for the same event

Requirement 18: *The number of abortions resulting in the reported death of the mother.*

There were no reported deaths of mother for abortions for the 2014 reporting period.

Requirement 19: *The number of females to whom the physician provided the information in subparagraph a of paragraph 1 of subsection B of Section 1-738.2 of Title 63 of the Oklahoma Statutes; of that number, the number provided by telephone and the number provided in person; and of each of those numbers, the number provided in the capacity of a referring physician and the number provided in the capacity of a physician who is to perform the abortion.*

Table 25. Informed Consent: Paragraph 1, Subsection B

Was the information required by paragraph 1 of subsection B of Section 1-738.2 of Title 63 of the Oklahoma Statutes provided to the mother?	Number of Abortions	Percent
Yes	4900	99.8
No	10	0.2
Total	4910	100.0
If yes, was it provided:		
In person:	1481	30.2
By telephone:	3427	69.8
Total	4908	100.0
For Telephone, was it provided by:		
A referring physician:	**	**
The physician performing the abortion:	0	0.0
An agent of a referring physician:	0	0.0
An agent of the physician performing the abortion:	3422	100.0
For In person, was it provided by:		
A referring physician:	**	
The physician performing the abortion:	6	0.4
An agent of a referring physician:	**	
An agent of the physician performing the abortion:	1471	99.3

** Cell is suppressed to maintain confidentiality of surrounding entries

Requirement 20: The number of females to whom physicians or agents of physicians provided the information in paragraph 2 of subsection B of Section 1-738.2 of Title 63 of the Oklahoma Statutes; of that number, the number provided by telephone and the number provided in person; of each of those numbers, the number provided in the capacity of a referring physician and the number provided in the capacity of a physician who is to perform the abortion; and of each of those numbers, the number provided by the physician and the number provided by an agent of the physician.

Table 26. Informed Consent: Paragraph 2, Subsection B

Was the information required by paragraph 2 of subsection B of Section 1-738.2 of Title 63 of the Oklahoma Statutes provided to the mother?	Number of Abortions	Percent
Yes	4899	99.8
No	12	0.2
Total	4911	100.0
If yes, was it provided:		
In person:	1489	30.3
By telephone:	3427	69.7
Total	4916	100.0
For Telephone, was it provided by:		
A referring physician:	0	0.0
The physician performing the abortion:	0	0.0
An agent of a referring physician:	0	0.0
An agent of the physician performing the abortion:	3416	100.0
Total	3416	100.0
For In person, was it provided by:		
A referring physician:	0	0.0
The physician performing the abortion:	8	0.3
An agent of a referring physician:	0	0.6
An agent of the physician performing the abortion:	1480	99.2
Total	1488	100.0

Requirement 21: The number of females who availed themselves of the opportunity to have a copy of the printed information described in Section 1-738.3 of Title 63 of the Oklahoma Statutes mailed to them; and of that number, the number who, based on the submitted reports, did and did not obtain an abortion.

Table 27: Printed Materials Mailed

Did the mother avail herself of the opportunity to have the printed materials described in Section 1738.3 of Title 63 of the Oklahoma Statutes mailed to her?	Frequency	Percent
Yes	21	0.4
No	4,881	99.6
Total	4,902	100.0
If yes, the number of women who did or did not have an abortion:		
Did have an abortion:	21	100.0
Did not have an abortion:	0	0.0
Total	21	100.0

Requirement 22: The number of abortions performed by the physician in which information otherwise required to be provided at least twenty-four (24) hours before the abortion was not so provided because an immediate abortion was necessary to avert the death of the female, and the number of abortions in which such information was not so provided because a delay would create serious risk of substantial and irreversible impairment of a major bodily function.

Table 28: Informed Consent and Medical Emergencies

Were the informed consent requirements of subsection B of Section 1-738.2 of Title 63 of the Oklahoma Statutes dispensed with because of a medical emergency necessitating an immediate abortion:	Number of Abortions	Percent
To avert death	**	
To avert substantial and irreversible impairment of a major bodily function arising from continued pregnancy	**	
Not Applicable	4,838	99.8
Total	4,843	100.0

** Cell is suppressed to maintain confidentiality of surrounding entries

Requirement 23: *The number of females to whom physicians or their agents provided the information described in subsection A of Section 1-738.8 of Title 63 of the Oklahoma Statutes; of that number: a) the number provided by telephone and the number provided in person; and of each of those numbers, the number provided in the capacity of a referring physician and the number provided in the capacity of a physician who is to perform the abortion, or by the agent of such physician, and b) the number of females who availed themselves of the opportunity to be given or mailed the materials described in Section 1-738.10 of Title 63 of the Oklahoma Statutes, and the number who did not; and of each of those numbers, the number who, to the best of the information and belief of the reporting physician, went on to obtain the abortion.*

No abortions were reported that met this requirement.

Requirement 24: *The number of females to whom the information described in subsection A of Section 1-738.8 of Title 63 of the Oklahoma Statutes would have had to be provided but for a medical emergency determination; of that number, the number for whom an immediate abortion was necessary to avert the death of the female, and the number for whom a delay would have created serious risk of substantial and irreversible impairment of a major bodily function.*

No abortions were reported that met this requirement.

Requirement 25: *The number of abortions performed within the scope of employment of Oklahoma state employees and employees of an agency or political subdivision of the state, the number of abortions performed with the use of public institutions, facilities, equipment, or other physical assets owned, leased, or controlled by this state, its agencies, or political subdivisions, and for each category: a. the number of abortions reported as necessary to save the life of the mother, the life-endangering conditions identified, and the number of each such condition reported, b. the number of abortions reported from pregnancies resulting from forcible rape, the number of such rapes reported to law enforcement authorities, general categories of law enforcement authorities to whom reports were made and the number made to each category, and a statistical summary of the length of time between the dates of reporting to law enforcement authorities and the dates of the abortions, and c. the number of abortions reported from pregnancies resulting from incest committed against a minor, the number of perpetrators of incest in such cases reported to law enforcement authorities, general categories of law enforcement authorities to whom reports were made and the number made to each category, and a statistical summary of the length of time between the dates of reporting to law enforcement authorities and the dates of the abortions.*

Table 30. Abortion performed in the scope of a State Employee/Agency or in a Public Facility

State Employee/Agency	Number of Abortions	Percent
Yes	8	0.3
<i>Abortion performed to save mother's life</i>	7	0.2
<i>Pregnancy as a result of forcible rape</i>	**	
<i>Pregnancies resulting from incest committed against a minor</i>	Not Applicable	
<i>Statistical Summary of length of time between the dates of reporting to law enforcement and the dates of the abortion</i>	Not Applicable	
No	2805	99.4
Public Facility/Equipment	Number of Abortions	Percent
Yes	8	0.3
<i>Abortion performed to save mother's life</i>	7	0.2
<i>Pregnancy as a result of forcible rape</i>	**	**
<i>Pregnancies resulting from incest committed against a minor</i>	Not Applicable	
<i>Statistical Summary of length of time between the dates of reporting to law enforcement and the dates of the abortion</i>	Not Applicable	
No	2802	99.4

Requirement 26: *The number of females to a parent of whom the physician provided notice as required by Section 1-740.2 of Title 63 of the Oklahoma Statutes; of that number, the number provided personally as described in that section, and the number provided by mail as described in that section, and of each of those numbers, the number of females who, to the best of the information and belief of the reporting physician, went on to obtain the abortion.*

Table 31: Parental Notice or Consent

The number of females to a parent of whom the physician provided notice as required by Section 1-740.2 of this title	Frequency	Percent
Yes	173	100.0
No	0	0.0
Total	173	100.0
If yes, was it provided:		
In-person	80	45.3
By Mail	93	54.7
Total	173	100.0
If the notice was provided in-person, did the female go on to have an abortion?		
Did have an abortion	80	100.0
Did not have an abortion	0	0.0
Total	80	100.0
If the notice was provided by mail, did the female go on to have an abortion?		
Did have an abortion	93	100.0
Did not have an abortion	0	0.0
Total	93	100.0

**Cell is suppressed to maintain confidentiality of surrounding entries

Requirement 27: The number of females upon whom the physician performed an abortion without the notice to or consent of the parent of the minor required by Section 1-740.2 of Title 63 of the Oklahoma Statutes; of that number, the number who were emancipated minors and the number who suffered from a medical emergency, and of the latter, the number of cases in which a parent was notified subsequently and the number of cases in which a judicial waiver was obtained. In the case of medical emergencies in which a parent was informed subsequently, a statistical summary of the period of time elapsed before notification.

Table 32: No Parental Notice or Consent

No Parental Notice or Consent	Frequency	Percent
The number of females upon whom the physician performed an abortion without the notice to or consent of the parent of the minor required by Section 1-740.2 of this title (Total)	5	100.0
<i>Minor received judicial authorization to obtain abortion without parental notice or consent</i>	**	
<i>Emancipated Minors</i>	**	
Suffered a Medical Emergency	0	
<i>Parent subsequently notified[§]</i>	<i>Not Applicable</i>	
<i>Elapsed time before parental notification[§]</i>	<i>Not Applicable</i>	
Judicial Waiver Obtained		
Yes	**	
No	**	
Total	5	100.0

[§]No data available, because no medical emergencies were reported.

**Cell is suppressed to maintain confidentiality of surrounding entries

Requirements 28, 29 & 30: The number of abortions performed after receiving judicial authorization to do so without parental notice and consent (28); The number of abortions performed on minors after judicial authorizations were granted because of a finding that the minor girl was mature and capable of giving informed consent (29); and; The number of abortions performed on minors after judicial authorizations were granted because of a finding that the performance of the abortion without parental notification and consent was in the best interest of the minor (30).

Table 33: Judicial Authorization

The number of abortions performed after receiving judicial authorization to do so without parental notice and consent	Frequency	Percent
Judge ruled that minor was mature enough to give informed consent on her own	**	
Judge ruled that abortion was in the best interest of the minor	**	

**Cell is suppressed to maintain confidentiality of surrounding entries

Requirement 31-34: The number of abortions performed after which the remains of the fetus after the abortion were examined to ensure that all such remains were evacuated from the mother's body (31); The number of male children aborted and female children aborted, as determined from the examination of fetal remains after abortion (32); The number of male children aborted and female children aborted, as determined by any method other than those reported in paragraph 32 of this subsection (33); The number of instances in which the mother was informed prior to the abortion that the child to be aborted was a female (34).

Table 34. Fetal Examination

Fetal Examination	Number of Abortions	Percent
The number of abortions performed after which the remains of the fetus after the abortion were examined to ensure that all such remains were evacuated from the mother's body:		
Yes	900	21.7
No	3240	78.3
Total	4140	100.0
The number of male children aborted and female children aborted, as determined from the examination of fetal remains after abortion		
Yes	0	0.0
No	0	0.0
Not applicable	2056	100.0
Total	2056	100.0
The number of male children aborted and female children aborted, as determined by any method other than those reported in paragraph 32 of this subsection		
Yes	0	0.0
No	0	0.0
Not applicable	2056	100.0
Total	2056	100.0
The number of instances in which the mother was informed prior to the abortion that the child to be aborted was a female:		
Yes	**	
No	**	
Not Applicable	2056	100.0
Total	2061	100.0

Requirement 35 & 36: The number of abortions performed without surgery but rather as the result of the administration of chemicals (35); The number of abortions performed as reported in paragraph 35 of this subsection, in which the physician was present in the same room as the woman to whom the chemicals were administered at the time any such chemicals were first administered (36).

Table 35. Chemical Administration

Chemical Administration*	Number of Abortions	Percent
The number of abortions performed without surgery but rather as the result of the administration of chemicals (Total)	1813	
The number of abortions performed as reported in paragraph 35 of this subsection, in which the physician was present in the same room as the woman to whom the chemicals were administered at the time any such chemicals were first administered:	1813	100.0

Requirement 37: The number of abortions performed for each hospital at which the abortionist had hospital privileges at the time of the abortion.

Table 36. Hospital Privileges

Hospital Privileges	Number of Abortions	Percent
The number of abortions performed for each hospital at which the abortionist had hospital privileges at the time of the abortion:		
Yes	2062	49.8
No	2081	50.2
Total	4143	100.0

Requirements 38-43: The number of abortions performed at which ultrasound equipment was used before the abortion (38); The number of abortions reported in paragraph 38 of this subsection, during which the mother was under the effect of anesthesia at the time of the ultrasound (39); The number of abortions performed at which ultrasound equipment was used during the abortion (40); The number of abortions reported in paragraph 40 of this subsection, during which the mother was under the effect of anesthesia at the time of the ultrasound (41); The number of abortions performed at which ultrasound equipment was used after the abortion (42); The number of abortions reported in paragraph 42 of this subsection, during which the mother was under the effect of anesthesia at the time of the ultrasound (43).

Table 37. Ultrasound Equipment Usage

Ultrasound Equipment Usage	Number of Abortions	Percent
Ultrasound Equipment Used Before Abortion (Total):	4915	100.0
Mother under anesthesia at the time of the ultrasound:		
Yes	408	8.9
No	4155	91.0
Not Applicable	**	
Total	4566	100.0
Ultrasound Equipment Used During Abortion (Total):	414	100.0
Ultrasound Equipment Used After Abortion (Total):	771	100.0

Requirement 44: *The mean gestational age of the fetus at the time of the abortion, as determined by ultrasounds reported.*

Table 38. Mean Gestational Age of Fetus, as determined by the ultrasound

N	Mean (wks)	SD
4898	6.8	3.2

Requirement 45: *The number of abortions for which no determination of probable postfertilization age was made as required by Section 1-745.5 of this title.*

Table 39: Probable Postfertilization Age

Probable Postfertilization Age	Number of Abortions	Percent
The number of abortions for which a probable postfertilization age determination was made:	2082	42.5
The number of abortions for which probable postfertilization age was not made:	27	0.55
Not Applicable	2786	56.92
Total	4895	100.0

Requirement 46: *The number of abortions in which the pregnant woman was told that it may be possible to make the embryonic or fetal heartbeat of the unborn child audible for the pregnant woman to hear; the number of abortions in which the pregnant woman was asked if she would like to hear the heartbeat; and the number of abortions in which the embryonic or fetal heartbeat of the unborn child was made audible for the pregnant woman to hear, using a Doppler fetal heart rate monitor.*

Table 40: Fetal Heartbeat

Fetal Heartbeat	Number of Abortions	Percent
The number of abortions in which the pregnant woman was told that it may be possible to make the embryonic or fetal heartbeat of the unborn child audible		
Yes	4138	99.5
No	**	
Not Applicable	**	
The number of abortions in which the pregnant woman was asked if she would like to hear the heartbeat		
Yes	3210	77.5
No	**	
Not Applicable	929	22.4
The number of abortions in which the embryonic or fetal heartbeat of the unborn child was made audible for the pregnant woman to hear		
Yes	88	2.1
No	4050	97.8
Not Applicable	**	

Acknowledgments

Terry L. Cline, PhD
Commissioner of Health

Derek Pate, DrPH
Director, Health Care Information Division

Authors

Amber Freudenberger, MPH
Staff Analyst, Health Care Information

