

# **Abortion Surveillance in Oklahoma**

2002-2013 SUMMARY REPORT · OKLAHOMA STATE DEPARTMENT OF HEALTH

## Introduction

In 2000, the Oklahoma State Department of Health (OSDH) began its surveillance activities of Oklahoma's legally induced terminations of pregnancy (ITOP), also known as legally induced abortions. The OSDH uses these data to monitor the annual number of legal induced abortions and to describe those women receiving legal abortion services in Oklahoma. In doing so, the OSDH produces a partial accounting of pregnancies that terminate in outcomes other than a live born infant. This report follows the requirements outlined in the *Statistical Abortion Reporting Act*<sup>1</sup>. This act outlines requirements for: an Annual Abortion Report, Complications of Induced Abortion Report, and an Annual Judicial Bypass of Abortion Parental Consent Summary Report<sup>2</sup>. The Annual Abortion Report includes data from the Individual Abortion Form, which physicians performing abortions are required to complete and submit electronically beginning in April, 2012<sup>3</sup>. The present report includes data collected by the office of Health Care Information (HCI), Center for Health Statistics, at the OSDH for calendar years 2002-2013.

## Methods

For the report years, HCI assembled data submitted to the OSDH by the three medical facilities licensed to perform legal abortions in the state of Oklahoma. No other hospitals or clinics were sanctioned to perform abortion services during this time frame. These three facilities provided data on the number of abortions and the characteristics of women who obtained legal abortions. Legal induced abortion is defined by Oklahoma statute as the "the use or prescription of any instrument, medicine, drug, or any other substance or

device intentionally to terminate the pregnancy of a female known to be pregnant with an intention other than to increase the probability of a live birth, to preserve the life or health of the child after live birth, to remove an ectopic pregnancy, or to remove a dead unborn child who died as the result of a spontaneous miscarriage, accidental trauma, or a criminal assault on the pregnant female or her unborn child."<sup>4</sup>

The individual abortion form, which was implemented in April, 2012, includes multiple variables about women seeking abortion and each abortion procedure including: cost, method of payment, reason for abortion, ultrasound usage, and informed consent, among others. An updated abortion form was implemented in November, 2013 with an additional 16 requirements. These indicators are presented in Tables 9-40 following the 2002-2013 summary statistics.

This document reports on overall and characteristic-specific percentages, which are based only on known values. Single-year and multi-year abortion statistics are included in the report. Abortion ratios, defined as the number of abortions per 1,000 live births, and abortion rates, defined as the number of abortions per 1,000 women in a specified age group, are provided for many demographic characteristics. Population data used to compute abortion rates were obtained from the U.S. Census Bureau.

Women between the ages of 20 and 34 years were placed into 5-year age groups, women less than 20 years of age were placed into a single group, and women greater than or equal to 35 years of age were placed into a single age group (i.e., <20, 20-24, 25-29, 30-34, and ≥35). The number, ratio, and rate of abortions are presented for each age group. Abortion rates for women aged 19 or younger were based on

<sup>1</sup> HB 3075, c 163, 1, eff. November 1, 2010.

<sup>2</sup> HB 3284, c. 276, § 5, eff. November 1, 2010.

<sup>3</sup> HB 3284, c. 276, § 4, eff. November 1, 2010.

<sup>4</sup> Title 63 O.S. Section 1-730.

population totals for women aged 10 to 19 years. Rates for women aged 35 or older were based on the population of women aged 35 to 44 years. Rates for all women who obtained abortions were based on the population of women 15-44 years of age. Age was missing for less than 1 percent of all reported abortions.

Race was classified into five categories: White, Black, American Indian, Asian or Pacific Islander, and Other. There were no records for which race was unavailable, however, ethnicity was not included in this analysis for two reasons. First, there was a large proportion of missing or unknown values (31 percent) in the records submitted through 2011. Second, beginning in April, 2012, data for women's ethnicity was no longer collected on the Individual Abortion Form. Therefore, the abortion numbers, ratios, and rates are presented in this report by race only. Cross-tabulations by race and ethnicity are not presented.

Marital status was classified as either married (women who were married or separated) or unmarried (women who were never married, divorced, or widowed). Abortion numbers, ratios, and rates are presented by marital status. Abortion rates by marital status reflect the number of abortions per 1,000 females aged 15-50 in a specified marital group. This is a non-standard grouping for the population denominator, but is useful to explore general patterns.

Education levels of women who obtained abortions were classified as less than high school education (8<sup>th</sup> grade through 12<sup>th</sup> grade, with no diploma), high school graduate or GED<sup>5</sup> completed, some college (college credit attained with no degree), or college graduate (bachelor's degree and beyond). The number, ratio, and rate of abortions are shown by level of education. Abortion rates by educational

attainment represent the number of abortions per 1,000 female population aged 18-44 years. Again, a non-standard population grouping is used here for review of general trends.

Percent distributions of abortions by previous live births and previous abortion history are presented. Previous live births were grouped into five classes: 0, 1, 2, 3, and 4 or more. Previous abortions were classified as 0, 1, 2, and 3 or more.

Measured in weeks, gestational age at the time of abortion was categorized as ≤8 weeks, 9-10 weeks, 11-12 weeks, 13-15 weeks, and ≥16 weeks. The number and percent of abortions by length of gestation are included in the report. For select characteristics (i.e., race, age, education, marital status, type of procedure, and live birth and abortion history), gestational age is used as a summary variable.

From January 2002-March 2012, the method of abortion was classified as curettage (suction and sharp), non-surgical medical abortion (RU-486, mifepristone and misoprostol), dilation and evacuation, and "other" procedures. The number and percent of legal abortions for each abortion method are provided. In April 2012, when the new individual abortion form was implemented, the method of abortion categories changed and were classified in the following categories: dilation and curettage, dilation and evacuation, RU 486, suction aspiration, and "other" procedures. In order to combine this data for the purpose of the summary statistics, these categories were combined based on their definitions. The new categories are presented in Tables 6-8 and 13. The previous data classified as "sharp curettage" is included in the "dilation and curettage" category, and previous data classified as "suction curettage" is included in the "suction aspiration" category.

To address concerns regarding confidentiality of women obtaining abortions and the stability of percentages, ratios, and rates, any computed

---

<sup>5</sup> General educational development

statistic was suppressed when the numerator used in the calculation was less than 5. Summary 2002-2013 statistics described in this report reflect legal induced abortions to Oklahoma resident women. Statistics presented in Tables 9-40 include data for all abortions which were performed in Oklahoma in 2013, including abortions to non-Oklahoma residents, per the requirements of the 2010 *Statistical Abortion Reporting Act*.

## Results

From 2002 to 2013, there have been 70,220 induced abortions (henceforth referred to as abortions) to Oklahoma residents reported to the Oklahoma State Department of Health (OSDH) (Table 1). On average there were 5,852 abortions per year. Over the time period reviewed, the peak year for the number of abortions was 2006. In that year, there were 6,807 abortions reported to the OSDH. The fewest number (4,587) of abortions was recorded in 2013. For the reporting period, the relative decrease in the number of abortions was 26.2 percent.

Oklahoma experienced a decline (30.4 percent) in the abortion ratio<sup>6</sup> between 2002 and 2013 (Table 2). Over this period the abortion ratio dropped from 123.5 abortions per 1,000 live births in 2002 to 86.0 abortions per 1,000 live births in 2013. The abortion ratio peaked in 2006 at 126.0, and then dropped from 2006 to its lowest level in 2013. For the reporting period overall, the abortion ratio was recorded to be 111.4 abortions per 1,000 live births.

The abortion rate<sup>7</sup> for Oklahoma decreased from 8.5 abortions per 1,000 women aged 15-44 years in 2002 to 6.1 abortions per 1,000 women aged 15-44 years in 2013 (Table 2). Overall, the abortion rate declined 28.2 percent over the reporting period. The abortion rate fluctuated

across the 8-year reporting period, reaching a high of 9.4 abortions per 1,000 women aged 15-44 years in 2006 and a low of 6.1 abortions per 1,000 female population aged 15-44 years in 2013. The abortion rate for the full reporting interval was 8.0 abortions per 1,000 female population aged 15-44 years.

Table 3 displays the number, ratio, and rate of abortions by county of residence for the period of January, 2002 to March, 2012. Beginning in April, 2012, abortion data was no longer collected by county of residence. Oklahoma County Residents received the greatest number of abortions during this time period (19,708), followed by Tulsa County Residents (15,893), representing 31.7 percent and 25.6 percent, respectively, of all abortions to Oklahoma residents.

The fewest number of abortions were reported for Cimarron County (7). The abortion ratios for Oklahoma counties ranged from 7.6 abortions per 1,000 live births (Bryan County) to 153.3 abortions per 1,000 live births (Tulsa County). Abortion rates varied from 0.5 abortions per 1,000 women aged 15-44 years (Bryan County) to 12.0 abortions per 1,000 women aged 15-44 years (Oklahoma County). Caution should be used when interpreting these county level statistics due to the wide variation in the number of abortions reported and the population size for rural counties. In addition, Oklahoma Residents may have sought abortions in other states. Multi-year calculations attempt to smooth the year-to-year fluctuation but this technique does not completely account for this variability.

Women aged 20-24 years obtained 34.5 percent of all abortions during the period 2002 to 2013. Women under 20 years of age obtained 16.8 percent of all abortions, with only a small fraction (<1 percent) of abortions occurring to the youngest of women (<15 years of age). Less than 3 percent of all abortions occurred to women aged 40 or older. The majority of abortions (57.9 percent) occurred to women in

<sup>6</sup> Number of abortions per 1,000 live births

<sup>7</sup> Number of abortions per 1,000 women in a specified age group

the principal childbearing years (ages 20-29) (Table 4). Abortion ratios were highest for women aged 35 or older or under 20 years old (145.0 and 143.8, respectively) (Figure 1). In contrast, abortion rates were lowest for women in the older age group (Table 5). Women aged 35 or older had an abortion rate of 2.7 per 1,000 female population. Teenage women had the second lowest abortion rate at 3.9 abortions per 1,000 female population. The highest abortion rates were found among women in the age groups 20-24 (15.1 abortions per 1,000 female population) and 25-29 years (11.2 abortions per 1,000 female population). Figure 2 shows over time that teenage women and women 35 years or older have consistently had the highest abortion ratios in Oklahoma. The general trend for all age groups has been downward for the reporting period. Additional characteristics of women by age can be found in Table 6.

More than two-thirds of abortions were to White women for the years under review. Overall, Black women obtained 18.8 percent of abortions, while another 6.0 percent were accounted for by American Indian women (Table 4). For the reporting period, the abortion ratio for Black women was highest at 219.6 abortions per 1,000 live births, followed by Asian or Pacific Island women at 152.2 abortions per 1,000 live births (Table 5). The abortion ratio for White women was 101.3 per 1,000 live births, with the lowest rate experienced by American Indian women at 58.5 abortions per 1,000 live births. A similar pattern of order was seen for abortion rates (Table 5), with Black women having a rate that was more than 3 times higher than American Indian women and more than twice as high as White women. Abortions are not reported by Hispanic origin due to the large percentage of records for which this characteristic was unknown, and beginning in April, 2012 Hispanic Origin data was no longer collected.

Racial variability was evident when considering the age distribution of the women who obtained abortions (Table 7). Broadly speaking,

differences between White and Black women were small. White women had a lower percentage of abortions occurring to ages 20-29 (White, 57.4 percent; Black, 61.6 percent), while Black women had a lower percentage of abortions to women in the oldest age group (age  $\geq 35$ : White, 11.5 percent; Black, 8.0 percent). American Indian women had the highest percentage of abortions for ages less than 20 years (21.6 percent). Conversely, Asian or Pacific Island women had the lowest percentages of abortions in the younger age groups with approximately 41 percent of this racial group's abortions occurring to women 30 years or older.

Examining abortions by educational attainment reveals that women with a high school education or equivalent GED accounted for the largest percentage of abortions (39.8 percent), while women with some college education accounted for the second highest percentage (30.2 percent) (Table 4). College graduates made up 13.9 percent of Oklahoma resident abortions. Over the twelve years of data included in this report, the distribution of abortions by education was relatively unchanged. The number of abortions per 1,000 women aged 18-44 years was highest for women with a high school diploma or GED (12.3 per 1,000 women aged 18-44) and lowest for women who had graduated from college (5.9 per 1,000 women aged 18-44) (Table 5).

Approximately 80 percent of abortions were to women who were unmarried (Table 4). Black women experienced the highest percentage of abortions to unmarried women, while Asian or Pacific Island women had the lowest percentage (88.0 percent and 53.6 percent, respectively; Table 7). There was an inverse relationship between a woman's age and the percentage of abortions that were to unmarried women, with older women constituting a diminishing percentage of unmarried abortions (Table 6). The abortion ratio and rate for unmarried women were 220.1 abortions per 1,000 live

births and 11.1 abortions per 1,000 women aged 15-50 years, respectively (Table 5). The comparable numbers for married women were 37.7 and 2.5, respectively.

The number and percent of abortions by gestational age for selected characteristics of women who obtained abortions are presented in Table 8. For 2002-2013, 64.5 percent of abortions occurred prior to 9 weeks gestation. More than 90 percent of all abortions occurred at less than 13 weeks gestation. A very small percentage of abortions occurred beyond 16 weeks (3.3 percent). Figure 3 displays abortion timing by age group and indicates that older women were more likely to obtain abortions during the first 8 weeks after becoming pregnant. Teen women were more likely than other age groups to obtain an abortion in the period 9-12 weeks (30.6 percent) or after the 13<sup>th</sup> week of gestation (12.0 percent). Generally speaking, women who were of Asian or Pacific Island descent, older, college educated, married, or primiparous were most likely to obtain abortions during the first 8 weeks of gestation.

Approximately 39 percent of reported abortions were to women who had not had a previous live birth (Table 4). Of the remaining percentage of abortions that occurred to women with a previous live birth, those with one previous live birth accounted for 27.1 percent; women with two previous live births, 21.2 percent; women with three previous live births, 8.9 percent; and women with 4 or more previous live births, 4.2 percent. The abortion ratio was highest for women with two or three previous live births (144.4 and 144.9, respectively) and lowest for women with one previous live birth (105.2 abortions per 1,000 live births) (data not shown).

For the overall reporting period, approximately 64 percent of reported abortions were to women who had no previous abortions (Table 4). Approximately 1 in 4 women obtaining an abortion had one previous abortion (24.2

percent). Of the remaining percentage of abortions that occurred to women with previous abortions, those with two previous abortions accounted for 7.8 percent; and women with 3 or more accounted for 4.3 percent.

Suction aspiration was the most common type of procedure for abortions between 2002 and 2013, accounting for 67.9 percent of abortions. Nonsurgical medical abortions, which involve the administration of medication to induce abortion, made up 18.8 percent of Oklahoma resident abortions. Dilation and evacuation amounted to just 3.5 percent of all abortions during the reporting period. Sixty-one percent of suction aspiration procedures occurred during the first 8 weeks of gestation (Table 8), while nearly all medical abortions occurred in the first 8 weeks of pregnancy, which is optimal for this type of procedure to be effective at inducing abortion<sup>8</sup>. Approximately 72 percent of Black women who obtained an abortion were treated using the suction aspiration (Table 7). Physicians treating American Indian women and women classified as the “other” racial category were more likely to use medical abortion than were other racial groups (30.9 and 29.9 percent, respectively). Overall, there was little difference by age in the proportion of women who received an abortion by suction aspiration, although there was a slight decrease for women over 35. A higher percentage of teenage women (7.9 percent) than those women aged 25 or older (5.6-5.9 percent) underwent a dilation and curettage procedure when obtaining an abortion. The proportion of women electing a nonsurgical medical abortion increased with age (Table 6). College graduates had the highest proportion (24.6 percent) of all education levels to use nonsurgical medical abortion (data not shown). There was little difference by marital status in the type of procedure used for abortion (data not shown).

---

<sup>8</sup> Kulier R. et al. (2011). Medical methods for first trimester abortion. Published online Nov., 2011. The Cochrane Library.



Over the reporting period, the proportion of abortions by the suction aspiration procedure decreased by approximately 30 percent, while the percentage of non-surgical abortions have increased dramatically. In 2002, non-surgical abortions made up only 4.5 percent of all abortions performed in Oklahoma, while in 2012 non-surgical abortions made up approximately 39 percent of all abortions (Figure 4).

Tables 9-40 present required data outlined in the *63 § 1-738m Annual Abortion Report*<sup>9</sup> section of the 2010 Statistical Abortion Reporting Act. This section presents the 46 requirements as well as the corresponding data.

## Discussion

Oklahoma had 70,220 reported abortions in 2002-2013. More than half of the abortions which occurred between January 2002-March 2012 were performed on residents of Oklahoma County and Tulsa County. Comparatively, resident births for these two counties represented 40.7 percent of all births and 37.2 percent of the female childbearing population in Oklahoma during the reporting period.

During the twelve-year reporting period, the rate of abortions was higher among certain demographics. Namely, women aged 20-29 years, Black women, women with less education and those who were unmarried had higher rates of abortions compared to other women of childbearing age. From 2002-2013, approximately 70 percent of abortions were to White women; however, Blacks and Asians had both a higher abortion rate and ratio during the time period. There were other differences evident in the proportion of abortions for the various racial groups. For instance, compared to women in the other racial categories, Asian women had a higher proportion of abortions for those aged

30 years and older, college graduates, and those who were married. Asian women were also more likely to have had an abortion early in the pregnancy, with three-quarters of abortions occurring within the first 8 weeks of pregnancy compared to 52.7 percent (American Indians), 56.2 percent (Blacks), and 67.1 percent (Whites). American Indian women had a larger proportion of women under the age of 20 years who had an abortion compared to the other racial groups, and also were more likely to have a nonsurgical medical abortion.

The number of abortions declined by 26.2 percent over the period 2002-2013, and the abortion rate and ratio dropped by a greater extent (28.2 and 30.4 percent, respectively). The decrease in the abortion ratio was driven by growth in the number of births and reduction in the number of abortions in Oklahoma. The number of births in the state rose 6.1 percent over the reporting period while the number of abortions declined by 26.2 percent. This combination of different trends produced the 30.4 percent decline in the abortion ratio. Direct comparisons to national level abortion data are difficult due to the character of data collection. National reporting suffers from frequent changes in the geographic areas covered, as some states do not report abortion data, while others report data intermittently. For the period between 2001-2010, 46 states reported abortion data to CDC. Among these 46 states, the abortion rate from 2010 was 14.6 abortions per 1,000 women aged 15-44 years, and the abortion ratio was 228 per 1,000 live births. The general patterns in the U.S. measures indicate a downward trend in the number, rate, and ratio of abortions from 2001-2010, which decreased 9 percent, 10 percent, and 8 percent, respectively<sup>10</sup>.

There were slight shifts in the demographic distribution of abortions for key characteristics.

<sup>9</sup> Full title of section: *63 § 1-738m Annual Abortion Report – Annual Judicial Bypass of Abortion parental Consent Summary*

<sup>10</sup> Pazol K., Creanga A.A., Burley K.D., Hayes B., Jamieson D.J.. 2013. Abortion Surveillance: United States, 2010. CDC Morbidity and Mortality Weekly Report, Vol. 62, No. 8.

Percentage of abortions declined slightly for those aged 24 years and younger and increased for those aged 25-29 years. Women with some college education and those with college degrees increased their proportion of all abortions, rising from 28.8 percent and 11.6 percent in 2002 to 33.1 percent and 15.2 percent in 2013, respectively. These changes in proportions should be interpreted as general patterns and not as statistically significant changes as no inferential statistics were performed. In the “other” racial group there was a sizable drop from 5.9 percent of all abortions in 2002 across the reporting period until 2011. The “other” racial group saw a significant increase to 6.2 percent in 2012, and 10.4 in 2013 with the implementation of a new abortion form (Table 4). These fluctuations are likely due to changes in how racial data is collected and coded rather than real change in the fraction of abortions for which the other racial category is a source.

Women less than 20 years of age were less likely to obtain their abortions during the first eight weeks of pregnancy compared to older women. For all other age groups, more than 60 percent received their abortions during the first 8 weeks of pregnancy with the highest proportion evident for women aged 35 years and older.

## Limitations

These abortion data were subject to a number of limitations. First, abortion data reported here reflect only those submitted from three licensed medical facilities. Abortions that occurred in other settings were not included in this report. As a result, these abortion statistics may underestimate the true, but unknown, number of abortions in Oklahoma. Second, data submitted by these medical facilities may be incomplete. Third, abortions occurring to Oklahoma residents outside the state were not submitted to OSDH for inclusion in the

abortion database. Fourth, due to the large number of missing or unknown values for Hispanic origin, abortion statistics were not included for the ethnicity of Oklahoma women.



**Table 1. Number of Legal Induced Abortions by Characteristics of Women, 2002-2013**

Characteristic	2002	2003	2004	2005	2006	2007	2008	2009	2010	2011	2012	2013	Total
<b>Total</b>	6,215	6,341	6,230	6,364	6,807	6,363	6,144	6,044	5,641	4,840	4,644	4,587	70,220
<b>Age (yrs)</b>													
<20	1,159	1,235	1,111	1,095	1,104	1,094	1,020	1,068	866	706	704	596	11,758
20-24	2,151	2,210	2,180	2,218	2,447	2,245	2,089	1,998	1,848	1,674	1,542	1,484	24,087
25-29	1,323	1,393	1,378	1,462	1,547	1,474	1,426	1,356	1,404	1,211	1,156	1,207	16,337
30-34	859	890	904	895	894	837	846	874	839	667	695	742	9,942
≥35	670	613	651	658	754	689	714	660	641	560	538	545	7,693
<b>Race</b>													
White	4,159	4,493	4,448	4,551	4,864	4,464	4,323	4,338	3,871	3,433	3,109	2,847	48,900
Black	1,143	1,138	1,147	1,256	1,304	1,318	1,168	1,063	1,054	909	839	846	13,185
American Indian	349	377	371	352	414	367	407	376	389	281	262	250	4,195
Asian	198	246	209	181	214	186	167	213	216	136	144	164	2,274
Other	366	87	55	24	11	28	79	54	111	81	290	478	1,664
<b>Marital status</b>													
Married	1,316	1,329	1,318	1,308	1,414	1,247	1,238	1,217	1,095	915	856	865	14,118
Unmarried	4,899	5,012	4,912	5,056	5,393	5,116	4,906	4,827	4,546	3,925	3,788	3,720	56,100
<b>Education</b>													
<HS	1,151	1,105	1,038	1,038	1,073	1,064	932	1,011	900	683	638	609	11,242
HS or GED	2,551	2,611	2,571	2,520	2,765	2,448	2,534	2,407	2,083	1,920	1,795	1,753	27,958
Some college	1,790	1,821	1,808	1,932	1,995	1,931	1,755	1,774	1,858	1,547	1,486	1,512	21,209
College grad	723	804	812	873	974	920	923	852	800	689	725	695	9,790
<b>Previous live births</b>													
0	2,382	2,440	2,331	2,425	2,573	2,481	2,321	2,357	2,181	1,912	1,934	1,809	27,146
1	1,730	1,782	1,757	1,754	1,884	1,735	1,639	1,574	1,490	1,295	1,187	1,182	19,009
2	1,327	1,320	1,395	1,387	1,504	1,351	1,323	1,289	1,141	990	920	925	14,872
3	526	560	532	551	595	553	586	558	532	413	390	434	6,230
≥4	250	239	215	247	251	241	275	266	297	229	213	237	2,960
<b>Previous ITOPs</b>													
0	3,846	4,211	3,964	4,129	4,322	3,992	3,879	3,869	3,502	2,918	3,103	3,038	44,773
1	1,578	1,476	1,532	1,530	1,717	1,585	1,471	1,409	1,404	1,272	989	1,036	16,999
2	505	435	475	470	488	513	499	481	466	433	343	335	5,443
≥3	286	219	259	235	280	271	295	285	269	217	209	178	3,003

**Table 2. Number, Ratio<sup>1</sup>, and Rate<sup>2</sup> of Legal Induced Abortions, 2002-2013**

<b>Year</b>	<b>Number</b>	<b>Live births<sup>3</sup></b>	<b>Ratio</b>	<b>Population<sup>4</sup></b>	<b>Rate</b>
2002	6,215	50,310	123.5	728,492	8.5
2003	6,341	50,874	124.6	726,158	8.7
2004	6,230	51,157	121.8	723,187	8.6
2005	6,364	51,775	122.9	722,500	8.8
2006	6,807	54,010	126.0	725,330	9.4
2007	6,363	54,946	115.8	727,495	8.7
2008	6,144	54,753	112.2	728,647	8.4
2009	6,044	53,705	112.5	732,789	8.2
2010	5,641	52,364	107.7	738,043	7.6
2011	4,840	51,409	94.1	742,805	6.5
2012	4,645	51,859	89.6	747,994	6.2
2013	4,587	53,355	86.0	747,994	6.1
Total	70,220	630,517	111.4	8,791,434	8.0
Percent change, 2002-2012	-26.2	6.1	-30.4	2.7	-28.2

<sup>1</sup> Number of abortions per 1,000 live births

<sup>2</sup> Number of abortions per 1,000 female population aged 15-44 years; 2013 population estimate is preliminary, based on 2012 data.

<sup>3</sup> Birth Statistics, OK2SHARE, OSDH. 2013 birth data is preliminary and subject to change.

<sup>4</sup> OK2SHARE, Vital Statistics, 2002-2012, number of females aged 15-44 years

<sup>5</sup> 2013 population is based on 2012 population

**Table 3. Number, Ratio<sup>1</sup>, and Rate<sup>2</sup> of Legal Induced Abortions by County of Residence, 2002-2012<sup>3</sup>**

County	Number	Ratio	Rate	County	Number	Ratio	Rate
Adair	93	26.1	2.0	LeFlore	270	39.0	2.7
Alfalfa	17	30.2	2.1	Lincoln	270	61.6	4.0
Atoka	32	17.7	1.2	Logan	398	78.9	4.6
Beaver	15	20.5	1.4	Love	46	34.6	2.5
Beckham	238	64.7	5.8	McClain	415	89.1	6.2
Blaine	78	47.2	4.1	McCurtain	64	12.1	0.9
Bryan	47	7.6	0.5	McIntosh	186	78.4	5.4
Caddo	360	76.8	6.3	Major	45	44.9	3.3
Canadian	1,527	96.6	6.4	Marshall	42	19.3	1.5
Carter	422	57.4	4.4	Mayes	409	69.5	5.0
Cherokee	588	84.9	5.4	Murray	102	56.6	4.0
Choctaw	38	15.7	1.3	Muskogee	1,136	102.2	7.6
Cimarron	7	19.2	1.6	Noble	77	49.0	3.4
Cleveland	4,192	133.7	6.8	Nowata	100	74.1	4.9
Coal	24	29.4	2.2	Okfuskee	127	74.1	5.9
Comanche	2,491	114.2	9.0	Oklahoma	19,708	149.1	12.0
Cotton	55	68.9	4.5	Okmulgee	626	106.7	7.8
Craig	170	84.2	6.0	Osage	435	86.1	4.9
Creek	910	94.3	6.5	Ottawa	249	50.1	3.8
Custer	395	87.6	6.1	Pawnee	181	81.1	5.6
Delaware	216	47.3	3.0	Payne	1,310	132.8	6.2
Dewey	35	55.7	4.3	Pittsburg	421	70.2	5.1
Ellis	16	31.0	2.4	Pontotoc	392	67.4	4.8
Garfield	690	67.1	5.6	Pottawatomie	844	82.0	5.4
Garvin	295	73.2	5.4	Pushmataha	98	65.3	4.6
Grady	508	72.8	4.7	Roger Mills	23	42.3	3.9
Grant	20	40.1	2.4	Rogers	978	92.2	5.5
Greer	27	37.6	2.9	Seminole	212	54.4	4.2
Harmon	9	19.7	1.6	Sequoyah	291	59.9	3.4
Harper	20	36.2	3.1	Stephens	314	51.5	3.6
Haskell	90	52.3	3.8	Texas	61	14.4	1.4
Hughes	85	46.9	3.6	Tillman	57	46.8	3.7
Jackson	281	56.8	4.7	Tulsa	15,893	153.3	11.8
Jefferson	30	33.8	2.5	Wagoner	704	75.6	4.8
Johnston	51	32.1	2.4	Washington	576	84.1	5.8
Kay	338	45.0	3.7	Washita	82	49.5	3.7
Kingfisher	132	60.1	4.4	Woods	57	53.0	3.2
Kiowa	58	46.3	3.3	Woodward	236	72.8	6.1
Latimer	54	41.5	2.4				

<sup>1</sup>Number of abortions per 1,000 live births

<sup>2</sup>Number of abortions per 1,000 female population aged 15-44 years

<sup>3</sup>Data includes January 2002-March, 2012. Beginning in April, 2012 information on abortion by county of residence was not collected.

**Table 4. Percent of Legal Induced Abortions by Characteristics of Women, 2002-2013**

<b>Characteristic</b>	<b>2002</b>	<b>2003</b>	<b>2004</b>	<b>2005</b>	<b>2006</b>	<b>2007</b>	<b>2008</b>	<b>2009</b>	<b>2010</b>	<b>2011</b>	<b>2012</b>	<b>2013</b>	<b>Total</b>
<b>Age (yrs)</b>													
<20	18.8	19.5	17.9	17.3	16.4	17.3	16.7	17.9	15.5	14.7	15.2	13.0	16.8
20-24	34.9	34.9	35.0	35.1	36.3	35.4	34.3	33.5	33.0	34.7	33.3	32.4	34.5
25-29	21.5	22.0	22.1	23.1	22.9	23.3	23.4	22.8	25.1	25.1	24.9	26.4	23.4
30-34	13.9	14.0	14.5	14.1	13.3	13.2	13.9	14.7	15.0	13.8	15.0	16.2	14.2
≥35	10.9	9.7	10.5	10.4	11.2	10.9	11.7	11.1	11.5	11.6	11.6	11.9	11.0
<b>Race</b>													
White	66.9	70.9	71.4	71.5	71.5	70.2	70.4	71.8	68.6	70.9	66.9	62.1	69.6
Black	18.4	17.9	18.4	19.7	19.2	20.7	19.0	17.6	18.7	18.8	18.1	18.5	18.8
American Indian	5.6	5.9	6.0	5.5	6.1	5.8	6.6	6.2	6.9	5.9	5.6	5.5	6.0
Asian	3.2	3.9	3.4	2.8	3.1	2.9	2.7	3.5	3.8	2.8	3.1	3.6	3.2
Other	5.9	1.4	0.9	0.4	0.2	0.4	1.3	0.9	2.0	1.7	6.2	10.4	2.4
<b>Marital status</b>													
Married	21.2	21.0	21.2	20.6	20.8	19.6	20.1	20.1	19.4	18.9	18.4	18.9	20.1
Unmarried	78.8	79.0	78.8	79.4	79.2	80.4	79.9	79.9	80.6	81.1	81.6	81.1	79.9
<b>Education</b>													
<HS	18.5	17.4	16.7	16.3	15.8	16.7	15.2	16.7	16.0	14.1	13.7	13.3	16.0
HS or GED	41.0	41.2	41.3	39.6	40.6	38.5	41.2	39.8	36.9	39.7	38.7	38.4	39.8
Some college	28.8	28.7	29.0	30.4	29.3	30.3	28.6	29.4	32.9	32.0	32.0	33.1	30.2
College Grad	11.6	12.7	13.0	13.7	14.3	14.5	15.0	14.1	14.2	14.2	15.6	15.2	13.9
<b>Previous live births</b>													
0	38.3	38.5	37.4	38.1	37.8	39.0	37.8	39.0	38.7	39.5	41.6	39.4	38.7
1	27.8	28.1	28.2	27.6	27.7	27.3	26.7	26.0	26.4	26.8	25.6	25.8	27.1
2	21.4	20.8	22.4	21.8	22.1	21.2	21.5	21.3	20.2	20.5	19.8	20.2	21.2
3	8.5	8.8	8.5	8.7	8.7	8.7	9.5	9.2	9.4	8.5	8.4	9.5	8.9
≥4	4.0	3.8	3.5	3.9	3.7	3.8	4.5	4.4	5.3	4.7	4.6	5.2	4.2
<b>Previous ITOPs</b>													
0	61.9	66.4	63.6	64.9	63.5	62.8	63.1	64.0	62.1	60.3	66.8	66.2	63.8
1	25.4	23.3	24.6	24.0	25.2	24.9	23.9	23.3	24.9	26.3	21.3	22.6	24.2
2	8.1	6.9	7.6	7.4	7.2	8.1	8.1	8.0	8.3	8.9	7.4	7.3	7.8
≥3	4.6	3.5	4.2	3.7	4.1	4.3	4.8	4.7	4.8	4.5	4.5	3.9	4.3

**Table 5. Number, Ratio<sup>1</sup>, and Rate<sup>2</sup> of Legal Induced Abortions by Characteristics of Women, 2002-2013**

Characteristic	Number	Live births	Ratio	Population <sup>3</sup>	Rate
<b>Total</b>	70,220	630,517	111.4	8,791,434	8.0
<b>Race</b>					
White	48,900	482,808	101.3	6,791,337	7.2
Black	13,185	60,043	219.6	817,681	16.1
American Indian	4,195	71,691	58.5	938,858	4.5
Asian	2,274	15,477	152.2	229,840	9.9
<b>Age (yrs)</b>					
<20	11,758	81,767	143.8	3,002,473	3.9
20-24	24,086	201,644	119.4	1,599,184	15.1
25-29	16,337	182,227	89.7	1,452,944	11.2
30-34	9,942	111,698	89.0	1,387,389	7.2
≥35	7,693	53,061	145.0	2,827,557	2.7
<b>Education<sup>4</sup></b>					
<HS	11,242	NA	NA	1,020,949	11.0
HS or GED	27,958	NA	NA	2,270,159	12.3
Some college	21,209	NA	NA	2,862,013	7.4
College graduate	9,790	NA	NA	1,650,721	5.9
<b>Marital Status<sup>5</sup></b>					
Married <sup>6</sup>	14,118	374653	37.7	5545521	2.5
Unmarried <sup>7</sup>	56,100	254860	220.1	5039075	11.1

<sup>1</sup>Number of abortions per 1,000 live births

<sup>2</sup>Number of abortions per 1,000 female population aged 15-44

<sup>3</sup>U.S. Census Bureau, number of females aged 15-44; 2013 population estimate is preliminary, based on 2012 data.

<sup>4</sup>Population includes females aged 18-44 years. It is not possible to present summary statistics for the abortion ratio by education, because of a change in methodology in mother's education data collection beginning in 2009.

<sup>5</sup>Number of abortions per 1,000 female population aged 15-50

<sup>6</sup>Now married including spouse absent; 2013 population estimate is preliminary, based on 2012 data.

<sup>7</sup>Never married, widowed, divorced; 2013 population estimate is preliminary, based on 2012 data.

**Table 6: Number and Percent (%) of Legal Induced Abortions by Age Group and Selected Characteristics, 2002-2013**

Characteristic	Age group (yrs)				
	<20	20-24	25-29	30-34	≥35
<b>Race</b>					
White	8,253 (70.2)	16,810 (69.8)	11,084 (67.9)	6,874 (69.1)	5,598 (72.9)
Black	2,178 (18.5)	4,749 (19.7)	3,308 (20.2)	1,809 (18.2)	1,051 (13.7)
American Indian	901 (7.7)	1,425 (5.9)	956 (5.9)	528 (5.3)	366 (4.8)
Asian	194 (1.7)	602 (2.5)	542 (3.3)	458 (4.6)	466 (6.1)
Other	231 (2.0)	500 (2.1)	446 (2.7)	273 (2.7)	200 (2.6)
<b>Education</b>					
<HS	5,393 (45.9)	2,695(11.2)	1,657 (10.1)	869 (8.7)	566 (7.4)
HS or GED	4,253 (36.2)	10,333 (42.9)	6,451 (39.5)	3,793 (38.2)	2,959 (38.5)
Some college	2,059 (17.5)	8,981 (37.3)	5,114 (31.3)	2,933 (29.5)	2,000 (26.1)
College graduate	48 (0.4)	2,072 (8.6)	3,107 (19.0)	2,344 (23.6)	2,151 (28.0)
<b>Marital status</b>					
Married	385 (3.3)	3,149 (13.1)	4,117 (25.5)	3,298 (33.1)	3,099 (40.3)
Unmarried	11,373 (96.7)	20,937 (86.9)	12,218 (74.8)	6,649 (66.9)	4,582 (59.7)
<b>Previous live births</b>					
0	9,523 (81.0)	11,181 (46.4)	4,072 (24.9)	1,428 (14.4)	784 (10.2)
1	1,843 (15.7)	7,815 (32.4)	4,911 (30.1)	2,579 (25.9)	1,750 (22.8)
2	345 (2.9)	3,859(16.0)	4,628 (28.3)	3,274 (32.9)	2,677 (34.9)
3	33 (0.3)	999 (4.1)	1,957 (12.0)	1,710 (17.2)	1,494 (19.5)
≥4	11 (0.1)	232 (1.0)	768 (4.7)	949 (9.5)	976 (12.7)
<b>Previous induced abortions</b>					
0	10,232 (87.1)	16,562 (68.8)	8,997 (55.1)	4,668 (48.4)	3,797 (49.4)
1	1,324 (11.3)	5,565 (23.1)	4,668 (28.6)	2,995 (30.9)	2,342 (30.5)
2	167 (1.4)	1,434 (6.0)	1,687 (10.3)	1,201 (12.4)	923 (12.0)
≥3	30 (0.3)	525 (2.2)	984 (6.0)	814 (8.4)	624 (8.1)
<b>Gestational age (wks)</b>					
≤8	6,737 (57.6)	15,307 (63.9)	10,856 (66.7)	6,745 (68.1)	5,398 (70.6)
9-10	2,400 (20.5)	4,154 (17.3)	2,718 (16.7)	1,580 (16.0)	1,146 (15.0)
11-12	1,203 (9.8)	2,318 (9.2)	1,411 (8.3)	826 (8.0)	538 (6.6)
13-15	907 (7.8)	1,520 (6.3)	877 (5.4)	506 (5.1)	394 (5.2)
≥16	510 (4.4)	785 (3.3)	471 (2.9)	285 (2.9)	207 (2.7)
<b>Type of Procedure</b>					
Suction Aspiration	8,135 (69.2)	16,388 (68.1)	11,155 (68.3)	6,691 (67.4)	5,004 (65.2)
RU-486	1,834 (15.6)	4,330 (18.0)	3,197 (19.6)	2,005 (20.2)	1,755 (22.9)
Dilation & curettage	933 (7.9)	1,582 (6.6)	910 (5.6)	585 (5.9)	431 (5.6)
Dilation & evacuation	544 (4.6)	857 (3.6)	514 (3.1)	282 (2.8)	224 (2.9)
Other	303 (2.6)	898 (3.7)	546 (3.3)	364 (3.7)	263 (3.4)



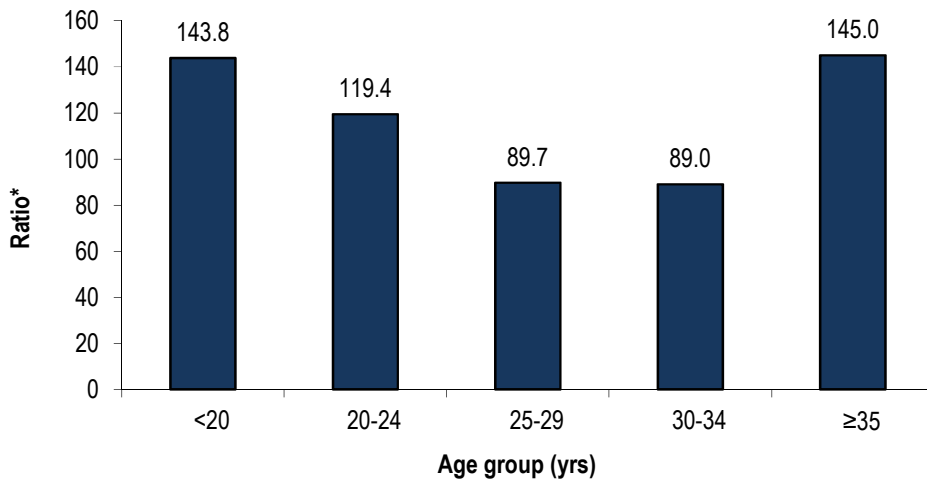
**Table 7. Number and Percent (%) of Legal Induced Abortions by Race and Selected Characteristics, 2002-2013**

Characteristic	Race				
	White	Black	Am. Indian	Asian	Other
<b>Age (yrs)</b>					
<20	8,253 (17.0)	2,178 (16.6)	901 (21.6)	194 (8.6)	231 (14.0)
20-24	16,810 (34.6)	4,749 (36.3)	1,425 (34.1)	602 (26.6)	500 (30.3)
25-29	11,084 (22.8)	3,308 (25.3)	956 (22.9)	542 (24.0)	446 (27.0)
30-34	6,874 (14.1)	1,809(13.8)	528 (12.6)	458 (20.2)	273 (16.5)
≥35	5,598 (11.5)	1051 (8.0)	366 (8.8)	466 (20.6)	200 (12.1)
<b>Education</b>					
<HS	8,043 (16.5)	1,721 (13.1)	806 (19.2)	255 (11.2)	417 (25.1)
HS or GED	19,340 (39.6)	5,228 (39.7)	1,911 (45.6)	803 (35.3)	674 (40.6)
Some college	14,649 (30.0)	4,598 (34.9)	1,012 (24.1)	601 (26.4)	349 (21.0)
College graduate	6,858 (14.0)	1,634 (12.4)	465 (11.1)	614 (27.0)	219 (13.2)
<b>Marital Status</b>					
Married	10,189 (20.8)	1,580 (12.0)	793 (18.9)	1,054 (46.4)	502 (30.2)
Unmarried	38,709 (79.2)	11,605 (88.0)	3,402 (81.1)	1,220(53.6)	1,162(69.8)
<b>Previous Live Births</b>					
0	19,879 (40.7)	4,169 (31.6)	1,556 (37.1)	1,002 (44.1)	539 (32.4)
1	13,028 (26.6)	3,969 (30.1)	1,125 (26.8)	470 (20.7)	417 (25.1)
2	10,191 (20.8)	2,879 (21.8)	903 (21.5)	512 (22.5)	386 (23.2)
3	4,069 (8.3)	1,392 (10.6)	388 (9.2)	182 (8.0)	199 (12.0)
≥4	1,730 (3.5)	776 (5.9)	223 (5.3)	108 (4.7)	123 (7.4)
<b>Previous Induced Abortions</b>					
0	31,843 (65.1)	7,627(57.8)	2,697 (64.3)	1,452 (63.9)	1,162 (69.8)
1	11,621 (23.8)	3,489 (26.5)	999 (23.8)	552 (24.3)	337 (20.3)
2	3,561 (7.3)	1,274 (9.7)	349 (8.3)	164 (7.2)	95 (5.7)
≥3	1,882 (3.8)	795 (6.0)	150 (3.6)	106 (4.7)	70 (4.2)
<b>Gestational Age (wks)</b>					
≤8	32,784 (67.1)	7,411 (56.2)	2,210 (52.7)	1,728 (76.0)	1,177 (70.8)
9-10	8,001 (16.4)	2,730 (20.7)	827 (19.7)	292 (12.8)	226 (13.6)
11-12	4,082 (8.3)	1,491 (11.3)	511 (12.2)	118 (5.2)	129 (7.8)
13-15	2,621 (5.4)	1,001 (7.6)	425 (10.1)	83 (3.6)	92 (5.5)
≥16	1,405 (2.9)	552 (4.2)	221 (5.3)	53 (2.3)	38 (2.3)
<b>Type of Procedure</b>					
Suction aspiration	33,394 (68.4)	9,520 (72.3)	2,232 (53.3)	1,578 (69.5)	933 (56.2)
RU-486	9,327 (19.1)	1,663 (12.6)	1,294 (30.9)	425 (18.7)	497 (29.9)
Dilation & curettage	2,819 (5.8)	969 (7.4)	456 (10.9)	96 (4.2)	119 (7.2)
Dilation & evacuation	1,520 (3.1)	626 (4.8)	167 (4.0)	63 (2.8)	62 (3.7)
Other	1,790 (3.7)	393 (3.0)	41 (1.0)	109 (4.8)	50 (3.0)

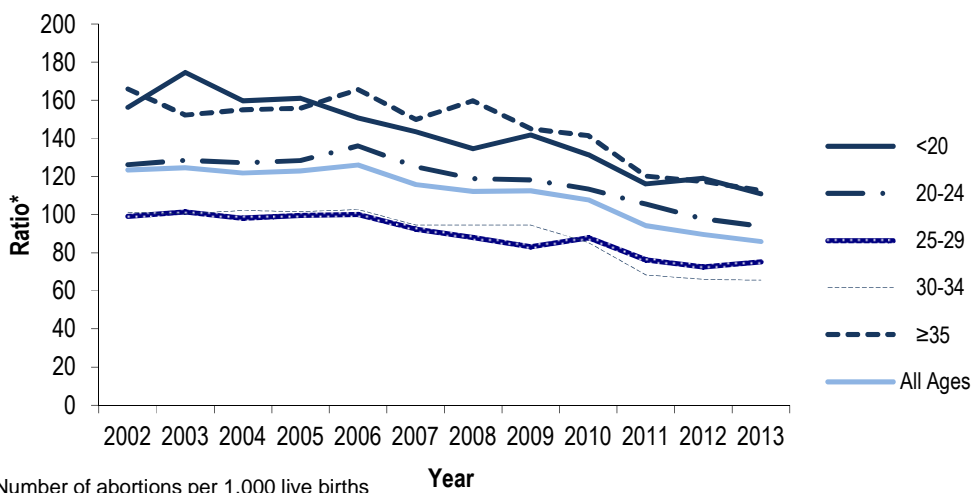
**Table 8. Number and Percent (%) of Legal Induced Abortions by Gestational Age and Selected Characteristics, 2002-2013**

Characteristic	Gestational age (wks)				
	≤ 8 wks	9-10 wks	11-12 wks	13-15 wks	≥ 16 wks
<b>Total</b>	45,312 (64.5)	12,076 (17.2)	6,331 (9.0)	4,222 (6.0)	2,271 (3.3)
<b>Race</b>					
White	32,784 (67.1)	8,001 (16.4)	4,082 (8.3)	2,621 (5.4)	1,405 (2.9)
Black	7,411 (56.2)	2,730 (20.7)	1,491 (11.3)	1,001 (7.6)	552 (4.2)
American Indian	2,210 (52.8)	827 (19.8)	511 (12.2)	425 (10.2)	221 (5.3)
Asian	1,728 (70.8)	292 (12.0)	118 (4.8)	83 (3.4)	53 (2.3)
Other	1,177 (70.8)	226 (13.6)	129 (7.8)	92 (5.5)	38 (2.3)
<b>Age (yrs)</b>					
<20	6,737 (57.3)	2,400 (20.4)	1,203 (10.2)	907 (7.7)	510 (4.3)
20-24	15,307 (63.6)	4,154 (17.2)	2,318 (9.6)	1,520 (6.3)	785 (3.3)
25-29	10,856 (66.5)	2,718 (16.6)	1,411 (8.6)	877 (5.4)	471 (2.9)
30-34	6,745 (67.8)	1,580 (15.9)	826 (8.3)	506 (5.1)	285 (2.9)
≥35	5,398 (70.3)	1,146 (14.9)	538 (7.0)	394 (5.1)	210 (2.7)
<b>Education</b>					
<HS	6,328 (56.3)	2,320 (20.6)	1,234 (11.0)	874 (7.8)	485 (4.3)
HS or GED	16,744 (59.5)	5,163 (18.5)	2,769 (9.9)	2,120 (7.6)	1,158 (4.1)
Some college	14,778 (69.7)	3,335 (15.7)	1,755 (8.3)	893 (4.2)	446 (2.1)
College graduate	7,446 (76.1)	1,257 (12.8)	570 (5.8)	334 (3.4)	178 (1.8)
<b>Marital Status</b>					
Married	9,807 (69.5)	2,211 (15.7)	1,048 (7.4)	679 (4.8)	372 (2.6)
Unmarried	35,503 (63.3)	9,865 (17.6)	5,283 (9.4)	3,543 (6.3)	1,899 (3.4)
<b>Previous Live Births</b>					
0	18,256 (66.6)	4,441 (16.7)	2,133 (7.9)	1,510 (5.6)	804 (3.0)
1	12,054 (63.4)	3,314 (17.4)	1,846 (9.7)	1,173 (6.2)	619 (3.3)
2	9,556 (64.3)	2,584 (17.4)	1,369 (9.2)	889 (6.0)	472 (3.2)
3	3,791 (60.9)	1,177 (18.9)	621 (10.0)	396 (6.4)	244 (3.9)
≥4	1,654 (55.9)	558 (18.9)	362 (12.2)	254 (8.6)	132 (4.5)
<b>Previous Induced Abortions</b>					
0	28,997 (64.8)	7,605 (17.0)	3,950 (8.8)	2,752 (6.1)	1,463 (3.3)
1	10,916 (64.2)	2,984 (17.6)	1,589 (9.3)	964 (5.7)	544 (3.2)
2	3,430 (63.0)	971 (17.8)	518 (9.5)	352 (6.5)	172 (3.2)
≥3	1,968 (65.6)	515 (17.2)	274 (9.1)	154 (5.1)	90 (3.0)
<b>Type of Procedure</b>					
Suction aspiration	29,122 (61.0)	11,577 (24.3)	5,988 (12.6)	737 (1.5)	230 (0.5)
RU-486	13,019 (98.6)	133 (1.0)	33 (0.2)	9 (0.1)	9 (0.1)
Dilation & curettage	643 (14.4)	304 (6.8)	178 (4.0)	2,157 (48.4)	1,175 (26.4)
Dilation & evacuation	107 (4.4)	50 (2.1)	128 (5.3)	1,308 (53.7)	845 (34.7)
Other	2,358 (99.3)	11 (0.5)	*	6 (0.3)	*

**Figure 1. Abortion ratio\* by age group for women who obtained a legal abortion: Oklahoma, 2002-2013**

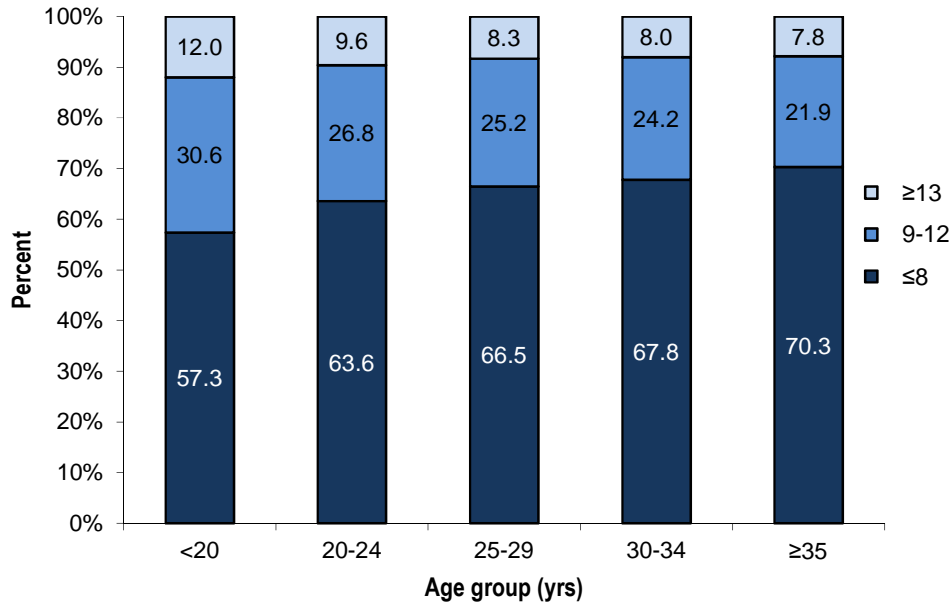


**Figure 2. Abortion ratio\* by age group for women who obtained a legal abortion, 2002-2013**

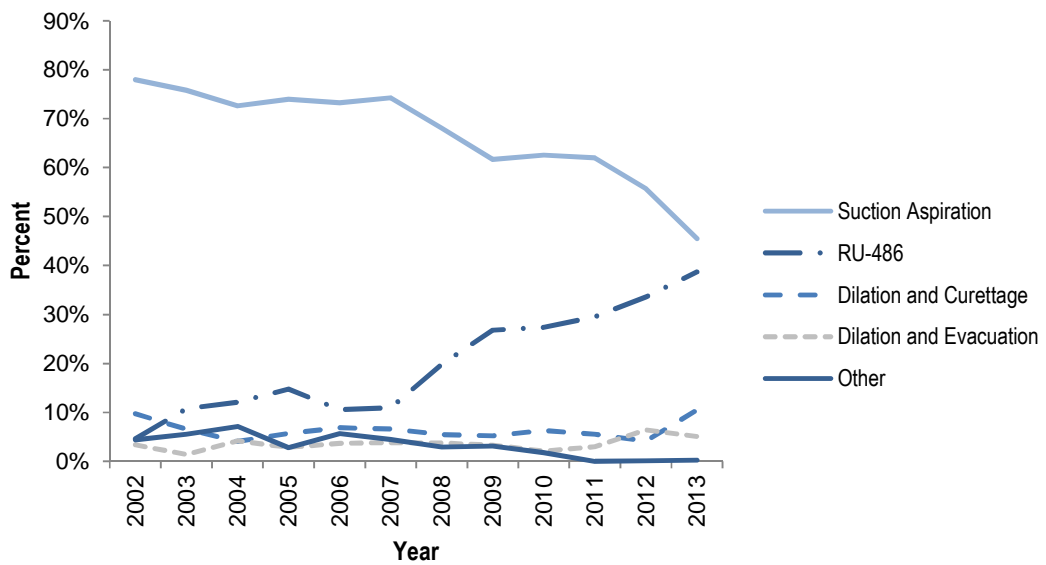


\*Number of abortions per 1,000 live births

**Figure 3. Percentage of abortions by timing and age group of women, 2002-2013**



**Figure 4. Percentage of abortions by method, 2002-2013**



## 2010 Statistical Abortion Reporting Act Requirements Section

This section of the Annual Abortion Report outlines legal induced abortion data collected in accordance with the 2010 Statistical Abortion Reporting Act (the Act) (HB 3284, c. 276, 1. Eff. November, 1 2010). According to the Act, beginning in June 1, 2013, the Oklahoma State Department of Health (OSDH) is required to publish on its website an Annual Abortion Report that includes both new annual data and statistics for all previous calendar years for which abortion-reporting requirements have been in effect. The tables below outline data from all abortions performed in Oklahoma in 2013 (including Oklahoma residents and non-Oklahoma residents). However, requirements 31-46 went into effect on November 1st, 2013, and thus Tables 34-40 represent data on abortions occurring in Oklahoma from November 1, 2013-December 31, 2013 (729 abortions total).

The Act also requires the OSDH to submit an Annual Judicial Bypass of Abortion Parental Consent Summary Report<sup>11</sup>. In 2013, OSDH did not receive any Annual Judicial Bypass Forms. Tables 32 and 33 contain data on Judicial Waivers of parental notice or consent. In addition, the Act also requires the OSDH to create a Complications of Abortions Report<sup>12</sup>. In 2013, there were no Complications of Induced Abortion Report forms submitted to OSDH.

To address concerns regarding confidentiality of women obtaining abortions and the stability of percentages, ratios, and rates, any computed statistics were suppressed when the numerator used in the calculation was less than 5. These instances are marked with an asterisk (\*).

***Requirement 1: The number of induced abortions performed in the previous calendar year broken down by month and county\* in which the abortion was performed.***

Table 1. Abortions by month

Month	Number of Abortions	Percent
January	515	10.3
February	467	9.3
March	497	9.9
April	500	10.0
May	440	8.8
June	373	7.4
July	364	7.3
August	391	7.8
September	358	7.1
October	379	7.6
November	372	7.4
December	357	7.1
<b>Total</b>	<b>5,013</b>	<b>100.0</b>

\*There were a total 5,013 abortions in the state of Oklahoma in 2013. However, we are cannot report abortions by county of occurrence, as this may lead to physician identification.

<sup>11</sup> Title 63 O.S. Section 1-738l

<sup>12</sup> Title 63 O.S. Section 1-738m

**Requirement 2:** The number of abortions classified by: a) the state or foreign country of residence of the mother; b) the age, marital status, and race of the mother, and c) the number of years of education of the mother.

Table 10. Selected Demographics of Mother

<b>State of Residence</b>	<b>Number of Abortions</b>	<b>Percent</b>
Arkansas (AR)	180	3.6
California (CA)	*	*
Colorado (CO)	*	*
Florida (FL)	*	*
Georgia (GA)	*	*
Idaho (ID)	*	*
Kansas (KS)	88	1.8
Louisiana (LA)	*	*
Massachusetts (MA)	*	*
Missouri (MO)	70	1.4
Mississippi (MS)	*	*
Montana (MT)	*	*
North Carolina (NC)	*	*
New Jersey	*	*
New Mexico (NM)	*	*
Oklahoma (OK)	4,587	91.7
Texas (TX)	59	1.2
Washington	*	*
<b>Total</b>	<b>5,002</b>	<b>100.0</b>
<i>Missing Data</i>	11	
<b>Age of Mother (yrs)</b>	<b>Number of Abortions</b>	<b>Percent</b>
<20	640	12.8
20-24	1,628	32.6
25-29	1,320	26.4
30-34	812	16.2
>35	600	12.0
<b>Total</b>	<b>5,000</b>	<b>100.0</b>
<i>Missing Data</i>	13	
<b>Marital Status (5 groups)</b>	<b>Number of Abortions</b>	<b>Percent</b>
Divorced	406	8.1
Married	758	15.1
Never Married	3,627	72.4
Separated	198	4.0
Widowed	22	0.4
<b>Total</b>	<b>5,011</b>	<b>100.0</b>
<i>Missing Data</i>	2	
<b>Race of Mother</b>	<b>Number of Abortions</b>	<b>Percent</b>
American Indian or Alaskan Native	259	5.2
Asian/Pacific Islander	177	3.5
Black	881	17.6
Other	549	11.0
White	3,145	62.8
<b>Total</b>	<b>5,011</b>	<b>100.0</b>
<i>Missing Data</i>	2	



Table 10. Selected Demographics of Mother (cont.)

<b>Level of Education</b>	<b>Number of Abortions</b>	<b>Percent</b>
8th grade or less	110	2.2
Some high school	534	10.7
High school graduate or GED completed	1,934	38.7
Some college credit	1,647	33.0
Bachelor's degree (e.g. BA, AB, BS)	627	12.6
Post grad work	141	2.8
<b>Total</b>	<b>4,993</b>	<b>100.0</b>
<i>Missing Data</i>	20	

**Requirement 3:** The number of abortions classified by: a) the number of previous pregnancies of the mother; b) previous live births to the mother, and c) previous miscarriages, and d.) previous induced abortions.

Table 11. Number of abortions by previous pregnancies, previous live births, previous miscarriages, and previous induced abortions

Previous Pregnancies	Number of Abortions	Percent
0	1,408	28.1
1	1,079	21.5
2	885	17.7
3	715	14.3
4	429	8.6
5 to 9	439	8.8
10 or more	58	1.2
<b>Total</b>	<b>5,013</b>	<b>100.0</b>
Previous Live Births		
0	1,978	39.5
1	1,296	25.9
2	1,016	20.3
3	464	9.3
4 or more	258	5.2
<b>Total</b>	<b>5,012</b>	<b>100.0</b>
<i>Missing Data</i>	1	
Previous Miscarriages		
0	4,213	84.1
1	628	12.5
2	119	2.4
3 or more	52	1.0
<b>Total</b>	<b>5,012</b>	<b>100.0</b>
<i>Missing Data</i>	1	
Previous Abortions		
0	3,321	66.3
1	1,143	22.8
2	359	7.2
3 or more	190	3.8
<b>Total</b>	<b>5,013</b>	<b>100.0</b>

**Requirement 4:** The number of abortions by week of gestational age.

Table 12. Gestational Age (weeks)

Gestational age (wks)	Number of Abortions	Percent
Less than 8 wks	3,601	71.9
9-10 wks	718	14.3
11-12 wks	358	7.2
13-15 wks	218	4.4
16-20 wks	115	2.3
<b>Total</b>	<b>5,010</b>	<b>100.0</b>
<i>Missing Data</i>	3	

**Requirement 5: The number of abortions performed by each reported method.**

Table 13. Abortion Method

Method	Number of Abortions	Percent
Dilation and Curettage	521	10.4
Dilation and Evacuation	270	5.4
RU 486	1,953	39.0
Suction Aspiration	2,260	45.1
Other	7	0.1
<b>Total</b>	<b>5,011</b>	<b>100.0</b>
<i>Missing Data</i>	2	

**Requirement 6: The number of abortions resulting in an infant born alive; of these, the number of cases in which life sustaining measures were taken; and a statistical summary of the length of survival of such infants.**

Table 14. Life Sustaining Measures

Life Sustaining Measures	Number of Abortions	Percent
Infants Born Alive	0	0.0
<i>Cases Life Sustaining Measures Taken</i>	Not Applicable	
<i>Length of Survival of Infants</i>	Not Applicable	

**Requirement 7: The number of cases in which anesthesia was administered to the mother and the number of each type of anesthesia.**

Table 15. Anesthesia Usage – Mother

Anesthesia Use	Number of Abortions	Percent
Yes	2,210	50.0
<i>Sodium Brevital</i>	2,210	100.0
No	2,803	63.4
<b>Total</b>	<b>4,420</b>	<b>100.0</b>
<i>Missing Data</i>	593	

**Requirement 8: The number of cases in which anesthesia was administered to the unborn child, and the number of each type of anesthesia and of each method of administration.**

Table 16. Anesthesia Usage – Fetus

Anesthesia Use	Number of Abortions	Percent
Yes	0	0.0
<i>Type</i>	<i>Not Applicable</i>	
No	5,013	100.0
<b>Total</b>	<b>5,013</b>	<b>100.0</b>

**Requirement 9: The number of each reported method of fetal disposal.**

Table 17. Fetal Disposal Method

<b>Fetal Disposal Method</b>	<b>Number of Abortions</b>	<b>Percent</b>
Biohazard	1,852	37.0
Home	676	13.5
Incineration	1,802	36.0
Medical waste	680	13.6
<b>Total</b>	<b>5,010</b>	<b>100.0</b>
<i>Missing Data</i>	3	

**Requirement 10: The reasons reported for the abortions, and the number of times each reason was cited.**

Table 18. Reason Given for Abortion<sup>§</sup>

Reasons Given for Abortion	Frequency	Percent
Abortion is necessary to avert the death of the mother:	*	*
Emotional health of the mother is at risk:	52	0.5
Mother does not have enough support from a husband or partner:	156	1.6
Emotional health of the mother is at risk:	5	0.0
Having a baby would dramatically change the life of the mother:	431	4.3
Having a baby would interfere with the education of the mother:	371	3.7
Having a baby would interfere with the job/employment/career of the mother:	335	3.3
Husband or partner is abusive to the mother or her children:	21	0.2
Husband or partner is unemployed:	92	0.9
Husband or partner wants mother to have an abortion:	37	0.4
Mother cannot afford child care:	257	2.6
Mother cannot afford the basic needs of life:	175	1.7
Mother cannot afford the child:	912	9.1
Mother cannot leave job to care for a baby:	167	1.7
Mother does not feel mature enough to raise a, or another, child:	138	1.4
Mother does not have enough support from a husband or partner:	51	0.5
Mother does not want people to know that she had sex or became pregnant:	58	0.6
Mother does not want to be a single mother:	192	1.9
Mother has completed her childbearing:	164	1.6
Mother has other children or dependents:	638	6.4
Mother is a student or planning to be a student:	339	3.4
Mother is currently or temporarily on welfare or public assistance:	51	0.5
Mother is having relationship problems:	203	2.0
Mother is not certain of relationship with the father of the child:	164	1.6
Mother is not currently in a relationship:	70	0.7
Mother is not ready for a, or another, child:	884	8.8
Mother is unemployed:	140	1.4
Mother is unmarried:	499	5.0
Mother suffered from a medical emergency as defined in Section 1-738.1 of Title 63 of the Oklahoma Statutes:	*	*
Mother would have to find a new place to live:	129	1.3
Other:	91	0.9
Parents want mother to have an abortion:	22	0.2
Partner and mother are unable to or do not want to get married:	118	1.2
Patient was asked why she is seeking an abortion, but she declined to give a reason:	2,823	28.2
Physical health of the mother is at risk:	112	1.1
Pregnancy was a result of forcible rape:	11	0.1
Pregnancy was a result of incest:	*	*
The relationship or marriage of the mother may soon break up:	40	0.4
There may be possible problem affecting the health of the fetus:	61	0.6
<b>Total</b>	<b>10,014</b>	<b>100.0</b>

<sup>§</sup> There are more than 5,013 responses because each individual could provide multiple answers.

***Requirement 11: The number of abortions paid for by: a) Private Insurance; b) Public health plan; c) Medicaid; d) Private pay; or e) other.***

Table 19. Abortion Payment Method

Payment Method	Number of Abortions	Percent
Private payment	4,994	99.7
Private Insurance	6	0.1
Medicaid	0	0.0
Other	11	0.2
<b>Total</b>	<b>5,011</b>	<b>100.0</b>
Missing Data	2	

***Requirement 12: The number of abortions in which medical health insurance coverage was under: a) a fee-for-service insurance company; b) a managed care company, or c) other***

Table 20. Type of Medical Health Insurance

Payment Method	Number of Abortions	Percent
Fee-for-Service	*	*
Managed Care	0	0.0
Other	0	0.0
<b>Total</b>	<b>*</b>	<b>100.0</b>

***Requirement 13: A statistical summary of the fees collected***

Table 21. Summary of Fees

Summary of Fees	Number of Abortions	Percent
\$0-500	12	0.2
\$501-600	4,113	82.1
\$601-700	502	10.0
\$701-800	134	2.7
\$800+	252	5.0
<b>Total</b>	<b>5,013</b>	<b>100.0</b>

***Requirement 14: Specialty area of medicine of the physician***

Table 22. Physician Specialty Area

Physician specialty area	Number of Abortions	Percent
Obstetrics-Gynecology	3,001	59.9
General Practice	2,012	40.1
<b>Total</b>	<b>5,013</b>	<b>100.0</b>



**Requirement 15:** The number of abortions in which ultrasound equipment was used before, during, or after the abortion, and the number of times vaginal ultrasound, abdominal ultrasound, or both were used in each of the three circumstances.

Table 23. Ultrasound Equipment Usage

Ultrasound Equipment Usage	Number of Abortions	Percent
Before Abortion:	5,013	77.5
During Abortion:	577	8.9
After Abortion:	877	13.6
<b>Total</b>	<b>6,467</b>	<b>100.0</b>
<b>Type of Ultrasound used before abortion:</b>		
Vaginal	3,482	69.4
Abdominal	1,452	28.9
Both Vaginal/Abdominal	79	1.6
No Ultrasound equipment used	6	0.1
<b>Total</b>	<b>5,019</b>	<b>100.0</b>
<b>Type of Ultrasound used during abortion:</b>		
Vaginal	**	**
Abdominal	544	11.0
Both Vaginal/Abdominal	*	*
No Ultrasound equipment used	4,384	88.4
<b>Total</b>	<b>4,960</b>	<b>100.0</b>
<i>Missing Data</i>	53	
<b>Type of Ultrasound used after abortion:</b>		
Vaginal	8	0.2
Abdominal	861	18.5
Both Vaginal/Abdominal	8	0.2
No Ultrasound equipment used	3,789	81.2
<b>Total</b>	<b>4,666</b>	<b>100.0</b>
<i>Missing Data</i>	347	

\*\* Cell is suppressed to maintain confidentiality of surrounding entries

**Requirement 16:** The number of abortions before which an ultrasound was performed by: a) the physician performing the abortion, b) a physician other than the physician performing the abortion, or c) other.

Table 24: Ultrasound Performed by

The number of abortions before which an ultrasound was performed by:	Number of Abortions	Percent
The physician performing the abortion	2,941	78.7
A physician other than the physician performing the abortion	513	13.7
Other	281	7.5
<b>Total</b>	<b>3,735</b>	<b>100.0</b>
<i>Missing Data</i>	1,278	

***Requirement 17: The number of abortions resulting in reported complications, and of those, how many were reported by the physician who performed the abortion, and how many were reported by another physician, the types of reported complications, and the number of each type based on data which shall be compiled and transmitted to the State Department of Health by the State Board of Medical Licensure and Supervision and the State Board of Osteopathic Examiners.***

There were no reported complications for abortions for the 2013 reporting period.

***Requirement 18: The number of abortions resulting in the reported death of the mother.***

There were no reported deaths of mother for abortions for the 2013 reporting period.

***Requirement 19: The number of females to whom the physician provided the information in subparagraph a of paragraph 1 of subsection B of Section 1-738.2 of Title 63 of the Oklahoma Statutes; of that number, the number provided by telephone and the number provided in person; and of each of those numbers, the number provided in the capacity of a referring physician and the number provided in the capacity of a physician who is to perform the abortion.***

Table 25. Informed Consent: Paragraph 1, Subsection B

<b>Was the information required by paragraph 1 of subsection B of Section 1-738.2 of Title 63 of the Oklahoma Statutes provided to the mother?</b>	<b>Number of Abortions</b>	<b>Percent</b>
Yes	5,013	100.0
No	0	0.0
<b>Total</b>	<b>5,013</b>	<b>100.0</b>
<b>If yes, was it provided:</b>		
In person	1,420	28.5
By telephone	3,567	71.5
<b>Total</b>	<b>4,987</b>	<b>100.0</b>
<i>Missing Data</i>	26	
<b>For Telephone, was it provided by:</b>		
A referring physician:	*	*
The physician performing the abortion:	**	**
An agent of a referring physician:	20	0.6
An agent of the physician performing the abortion:	3,531	99.2
<b>Total</b>	<b>3,561</b>	<b>100.0</b>
<i>Missing Data</i>	6	
<b>For In person, was it provided by:</b>		
A referring physician:	**	**
The physician performing the abortion:	0	0.0
An agent of a referring physician:	*	*
An agent of the physician performing the abortion:	1,416	99.8
<b>Total</b>	<b>1,419</b>	<b>100.0</b>
<i>Missing Data</i>	1	0.9

\*\* Cell is suppressed to maintain confidentiality of surrounding entries

***Requirement 20: The number of females to whom physicians or agents of physicians provided the information in paragraph 2 of subsection B of Section 1-738.2 of Title 63 of the Oklahoma Statutes; of that number, the number provided by telephone and the number provided in person; of each of those numbers, the number provided in the capacity of a referring physician and the number provided in the capacity of a physician who is to perform the abortion; and of each of those numbers, the number provided by the physician and the number provided by an agent of the physician.***

Table 26. Informed Consent: Paragraph 2, Subsection B

<b>Was the information required by paragraph 2 of subsection B of Section 1-738.2 of Title 63 of the Oklahoma Statutes provided to the mother?</b>	<b>Number of Abortions</b>	<b>Percent</b>
Yes	5,013	100.0
No	0	0.0
<b>Total</b>	<b>5,013</b>	<b>100.0</b>
<b>If yes, was it provided:</b>		
In person:	1,423	28.5
By telephone:	3,562	71.5
<b>Total</b>	<b>4,985</b>	<b>100.0</b>
<i>Missing</i>	28	
<b>For Telephone, was it provided by:</b>		
A referring physician:	0	0.0
The physician performing the abortion:	19	0.5
An agent of a referring physician:	5	0.1
An agent of the physician performing the abortion:	3,530	99.3
<b>Total</b>	<b>3,554</b>	<b>100.0</b>
<i>Missing Data</i>	8	
<b>For In person, was it provided by:</b>		
A referring physician:	0	0.0
The physician performing the abortion:	*	*
An agent of a referring physician:	*	*
An agent of the physician performing the abortion:	1,415	99.5
<b>Total</b>	<b>1,422</b>	<b>100.0</b>
<i>Missing Data</i>	1	

***Requirement 21:*** The number of females who availed themselves of the opportunity to have a copy of the printed information described in Section 1-738.3 of Title 63 of the Oklahoma Statutes mailed to them; and of that number, the number who, based on the submitted reports, did and did not obtain an abortion.

Table 27: Printed Materials Mailed

<b>Did the mother avail herself of the opportunity to have the printed materials described in Section 1738.3 of Title 63 of the Oklahoma Statutes mailed to her?</b>	<b>Frequency</b>	<b>Percent</b>
Yes	372	7.4
No	4,637	92.6
<b>Total</b>	<b>5,009</b>	<b>100.0</b>
<i>Missing Data</i>	4	
<b>If yes, the number of women who did or did not have an abortion:</b>		
Did have an abortion:	372	100.0
Did not have an abortion:	0	0.0
<b>Total</b>	<b>372</b>	<b>100.0</b>

***Requirement 22:*** The number of abortions performed by the physician in which information otherwise required to be provided at least twenty-four (24) hours before the abortion was not so provided because an immediate abortion was necessary to avert the death of the female, and the number of abortions in which such information was not so provided because a delay would create serious risk of substantial and irreversible impairment of a major bodily function.

Table 28: Informed Consent and Medical Emergencies

<b>Were the informed consent requirements of subsection B of Section 1-738.2 of Title 63 of the Oklahoma Statutes dispensed with because of a medical emergency necessitating an immediate abortion:</b>	<b>Number of Abortions</b>	<b>Percent</b>
To avert death	20	0.4
To avert substantial and irreversible impairment of a major bodily function arising from continued pregnancy	11	0.2
Not Applicable	4,982	99.4
<b>Total</b>	<b>5,013</b>	<b>100.0</b>

**Requirement 23:** *The number of females to whom physicians or their agents provided the information described in subsection A of Section 1-738.8 of Title 63 of the Oklahoma Statutes; of that number: a) the number provided by telephone and the number provided in person; and of each of those numbers, the number provided in the capacity of a referring physician and the number provided in the capacity of a physician who is to perform the abortion, or by the agent of such physician, and b) the number of females who availed themselves of the opportunity to be given or mailed the materials described in Section 1-738.10 of Title 63 of the Oklahoma Statutes, and the number who did not; and of each of those numbers, the number who, to the best of the information and belief of the reporting physician, went on to obtain the abortion.*

Table 29: Informed Consent: Subsection A

<b>The number of females to whom physicians or their agents provided the information described in subsection A of Section 1-738.8 of this title</b>	<b>Frequency</b>	<b>Percent</b>
Yes	25	30.5
No	57	69.5
<b>Total</b>	<b>82</b>	<b>100.0</b>
<i>Missing Data</i>	4,931	
<b>If yes, was it provided:</b>		
In person:	0	0.0
By telephone:	25	100.0
<b>Total</b>	<b>25</b>	<b>100.0</b>
<b>For Telephone, was it provided by:</b>		
A referring physician:	*	*
The physician performing the abortion:	*	*
An agent of a referring physician:	*	*
An agent of the physician performing the abortion:	23	92.0
<b>Total</b>	<b>25</b>	<b>100.0</b>
<b>The number of females who availed themselves of the opportunity to be given or mailed the materials described in Section 1-738.10 of this title</b>	<b>Frequency</b>	<b>Percent</b>
Yes	*	*
No	**	**
<b>Total</b>	<b>649</b>	<b>100.0</b>
<i>Missing Data</i>	4,364	
<b>If yes, the number of women who did or did not have an abortion:</b>	<b>Frequency</b>	<b>Percent</b>
Did have an abortion:	*	*
Did not have an abortion:	0	0.0
<b>Total</b>	<b>*</b>	<b>100.0</b>

\*\* Cell is suppressed to maintain confidentiality of surrounding entries

**Requirement 24:** *The number of females to whom the information described in subsection A of Section 1-738.8 of Title 63 of the Oklahoma Statutes would have had to be provided but for a medical emergency determination; of that number, the number for whom an immediate abortion was necessary to avert the death of the female, and the number for whom a delay would have created serious risk of substantial and irreversible impairment of a major bodily function.*

No abortions reported.

**Requirement 25:** *The number of abortions performed within the scope of employment of Oklahoma state employees and employees of an agency or political subdivision of the state, the number of abortions performed with the use of public institutions, facilities, equipment, or other physical assets owned, leased, or controlled by this state, its agencies, or political subdivisions, and for each category: a. the number of abortions reported as necessary to save the life of the mother, the life-endangering conditions identified, and the number of each such condition reported, b. the number of abortions reported from pregnancies resulting from forcible rape, the number of such rapes reported to law enforcement authorities, general categories of law enforcement authorities to whom reports were made and the number made to each category, and a statistical summary of the length of time between the dates of reporting to law enforcement authorities and the dates of the abortions, and c. the number of abortions reported from pregnancies resulting from incest committed against a minor, the number of perpetrators of incest in such cases reported to law enforcement authorities, general categories of law enforcement authorities to whom reports were made and the number made to each category, and a statistical summary of the length of time between the dates of reporting to law enforcement authorities and the dates of the abortions.*

Table 30. Abortion performed in the scope of a State Employee/Agency or in a Public Facility

<b>State Employee/Agency</b>	<b>Number of Abortions</b>	<b>Percent</b>
<b>Yes</b>	0	0.0
<i>Abortion performed to save mother's life</i>	<i>Not Applicable</i>	
<i>Pregnancy as a result of forcible rape</i>	<i>Not Applicable</i>	
<i>Pregnancies resulting from incest committed against a minor</i>	<i>Not Applicable</i>	
<i>Statistical Summary of length of time between the dates of reporting to law enforcement and the dates of the abortion</i>	<i>Not Applicable</i>	
<b>No</b>	5,013	100.0
<b>Total</b>	<b>5,013</b>	<b>100.0</b>
<b>Public Facility/Equipment</b>	<b>Number of Abortions</b>	<b>Percent</b>
<b>Yes</b>	0	0.0
<i>Abortion performed to save mother's life</i>	<i>Not Applicable</i>	
<i>Pregnancy as a result of forcible rape</i>	<i>Not Applicable</i>	
<i>Pregnancies resulting from incest committed against a minor</i>	<i>Not Applicable</i>	
<i>Statistical Summary of length of time between the dates of reporting to law enforcement and the dates of the abortion</i>	<i>Not Applicable</i>	
<b>No</b>	5,013	100.0
<b>Total</b>	<b>5,013</b>	<b>100.0</b>

**Requirements 26-30 concern females seeking abortion who were minors (under the age of 18). In total, there were 215 females under the age of 18 who received abortions in Oklahoma in 2013.**

***Requirement 26: The number of females to a parent of whom the physician provided notice as required by Section 1-740.2 of Title 63 of the Oklahoma Statutes; of that number, the number provided personally as described in that section, and the number provided by mail as described in that section, and of each of those numbers, the number of females who, to the best of the information and belief of the reporting physician, went on to obtain the abortion.***

**Table 31: Parental Notice or Consent**

<b>The number of females to a parent of whom the physician provided notice as required by Section 1-740.2 of this title</b>	<b>Frequency</b>	<b>Percent</b>
Yes	183	90.1
No	20	9.9
<b>Total</b>	<b>203</b>	<b>100.0</b>
<i>Missing Data</i>	12	
<b>If yes, was it provided:</b>		
In-person	87	55.4
By Mail	70	44.6
<b>Total</b>	<b>157</b>	<b>100.0</b>
<i>Missing Data</i>	26	
<b>If the notice was provided in-person, did the female go on to have an abortion?</b>		
Did have an abortion	87	100.0
Did not have an abortion	0	0.0
<b>Total</b>	<b>87</b>	<b>100.0</b>
<b>If the notice was provided by mail, did the female go on to have an abortion?</b>		
Did have an abortion	70	100.0
Did not have an abortion	0	0.0
<b>Total</b>	<b>70</b>	<b>100.0</b>

\*\*Cell is suppressed to maintain confidentiality of surrounding entries

***Requirement 27:*** The number of females upon whom the physician performed an abortion without the notice to or consent of the parent of the minor required by Section 1-740.2 of Title 63 of the Oklahoma Statutes; of that number, the number who were emancipated minors and the number who suffered from a medical emergency, and of the latter, the number of cases in which a parent was notified subsequently and the number of cases in which a judicial waiver was obtained. In the case of medical emergencies in which a parent was informed subsequently, a statistical summary of the period of time elapsed before notification.

Table 32: No Parental Notice or Consent

No Parental Notice or Consent	Frequency	Percent
The number of females upon whom the physician performed an abortion without the notice to or consent of the parent of the minor required by Section 1-740.2 of this title (Total)	*	100.0
Minor received judicial authorization to obtain abortion without parental notice or consent	*	*
Emancipated Minors	*	*
Suffered a Medical Emergency	0	
Parent subsequently notified <sup>§</sup>	Not Applicable	
Elapsed time before parental notification <sup>§</sup>	Not Applicable	
Judicial Waiver Obtained		
Yes	*	*
No	**	**
<b>Total</b>	<b>215</b>	<b>100.0</b>

<sup>§</sup>No data available, because no medical emergencies were reported.

\*\*Cell is suppressed to maintain confidentiality of surrounding entries

***Requirements 28, 29 & 30:*** The number of abortions performed after receiving judicial authorization to do so without parental notice and consent (28); The number of abortions performed on minors after judicial authorizations were granted because of a finding that the minor girl was mature and capable of giving informed consent (29); and; The number of abortions performed on minors after judicial authorizations were granted because of a finding that the performance of the abortion without parental notification and consent was in the best interest of the minor (30).

Table 33: Judicial Authorization

The number of abortions performed after receiving judicial authorization to do so without parental notice and consent	Frequency	Percent
Judge ruled that minor was mature enough to give informed consent on her own	*	*
Judge ruled that abortion was in the best interest of the minor	*	*
<b>Total</b>	<b>*</b>	<b>100.0</b>

\*\*Cell is suppressed to maintain confidentiality of surrounding entries



Requirements 31-46 went into effect on November 1<sup>st</sup>, 2013. A new abortion form reflecting questions to meet the new requirements was implemented on November 1<sup>st</sup>, and thus the following tables present data on abortions occurring in Oklahoma from November 1, 2013-December 31, 2013 (729 abortions total).

**Requirement 31-34:** The number of abortions performed after which the remains of the fetus after the abortion were examined to ensure that all such remains were evacuated from the mother's body (31); The number of male children aborted and female children aborted, as determined from the examination of fetal remains after abortion (32); The number of male children aborted and female children aborted, as determined by any method other than those reported in paragraph 32 of this subsection (33); The number of instances in which the mother was informed prior to the abortion that the child to be aborted was a female (34).

Table 34. Fetal Examination

Fetal Examination	Number of Abortions	Percent
The number of abortions performed after which the remains of the fetus after the abortion were examined to ensure that all such remains were evacuated from the mother's body:		
Yes	112	20.2
No	442	79.8
<b>Total</b>	<b>554</b>	<b>100.0</b>
<i>Missing Data</i>	175	
The number of male children aborted and female children aborted, as determined from the examination of fetal remains after abortion		
Yes	0	0.0
No	0	0.0
Not applicable	729	100.0
<b>Total</b>	<b>729</b>	<b>100.0</b>
The number of male children aborted and female children aborted, as determined by any method other than those reported in paragraph 32 of this subsection		
Yes	0	0.0
No	0	0.0
Not applicable	729	100.0
<b>Total</b>	<b>729</b>	<b>100.0</b>
The number of instances in which the mother was informed prior to the abortion that the child to be aborted was a female:		
Yes	0	0.0
No	0	0.0
Not Applicable	729	100.0
<b>Total</b>	<b>729</b>	<b>100.0</b>

***Requirement 35 & 36: The number of abortions performed without surgery but rather as the result of the administration of chemicals (35); The number of abortions performed as reported in paragraph 35 of this subsection, in which the physician was present in the same room as the woman to whom the chemicals were administered at the time any such chemicals were first administered (36).***

Table 35. Chemical Administration

<b>Chemical Administration*</b>	<b>Number of Abortions</b>	<b>Percent</b>
The number of abortions performed without surgery but rather as the result of the administration of chemicals <b>(Total)</b>	<b>262</b>	
The number of abortions performed as reported in paragraph 35 of this subsection, in which the physician was present in the same room as the woman to whom the chemicals were administered at the time any such chemicals were first administered:	262	100.0

***Requirement 37: The number of abortions performed for each hospital at which the abortionist had hospital privileges at the time of the abortion.***

Table 36. Hospital Privileges

<b>Hospital Privileges</b>	<b>Number of Abortions</b>	<b>Percent</b>
The number of abortions performed for each hospital at which the abortionist had hospital privileges at the time of the abortion:		
Yes	281	38.5
No	448	61.5
<b>Total</b>	<b>729</b>	<b>100.0</b>

**Requirements 38-43:** *The number of abortions performed at which ultrasound equipment was used before the abortion (38); The number of abortions reported in paragraph 38 of this subsection, during which the mother was under the effect of anesthesia at the time of the ultrasound (39); The number of abortions performed at which ultrasound equipment was used during the abortion (40); The number of abortions reported in paragraph 40 of this subsection, during which the mother was under the effect of anesthesia at the time of the ultrasound (41); The number of abortions performed at which ultrasound equipment was used after the abortion (42); The number of abortions reported in paragraph 42 of this subsection, during which the mother was under the effect of anesthesia at the time of the ultrasound (43).*

Table 37. Ultrasound Equipment Usage

Ultrasound Equipment Usage	Number of Abortions	Percent
<b>Ultrasound Equipment Used Before Abortion (Total):</b>	<b>729</b>	<b>100.0</b>
Mother under anesthesia at the time of the ultrasound:		
Yes	41	5.6
No	660	90.5
Not Applicable	28	3.8
<b>Total</b>	<b>729</b>	<b>100.0</b>
<b>Ultrasound Equipment Used During Abortion (Total):</b>	<b>61</b>	<b>100.0</b>
<b>Ultrasound Equipment Used After Abortion (Total):</b>	<b>100</b>	<b>100.0</b>

**Requirement 44:** *The mean gestational age of the fetus at the time of the abortion, as determined by ultrasounds reported.*

Table 38. Mean Gestational Age of Fetus, as determined by the ultrasound

N	Mean (wks)	SD
729	6.4	2.9

**Requirement 45:** *The number of abortions for which no determination of probable postfertilization age was made as required by Section 1-745.5 of this title.*

Table 39: Probable Postfertilization Age

Probable Postfertilization Age	Number of Abortions	Percent
The number of abortions for which a probable postfertilization age determination was made:	353	48.4
The number of abortions for which probable postfertilization age was not made:	0	0.0
Not Applicable	376	51.6
<b>Total</b>	<b>729</b>	<b>100.0</b>

***Requirement 46: The number of abortions in which the pregnant woman was told that it may be possible to make the embryonic or fetal heartbeat of the unborn child audible for the pregnant woman to hear; the number of abortions in which the pregnant woman was asked if she would like to hear the heartbeat; and the number of abortions in which the embryonic or fetal heartbeat of the unborn child was made audible for the pregnant woman to hear, using a Doppler fetal heart rate monitor.***

Table 40: Fetal Heartbeat

<b>Fetal Heartbeat</b>	<b>Number of Abortions</b>	<b>Percent</b>
The number of abortions in which the pregnant woman was told that it may be possible to make the embryonic or fetal heartbeat of the unborn child audible		
Yes	540	74.1
No	0	0.0
Not Applicable	189	25.9
<b>Total</b>	<b>729</b>	<b>100.0</b>
The number of abortions in which the pregnant woman was asked if she would like to hear the heartbeat		
Yes	410	56.2
Not Applicable	319	43.8
<b>Total</b>	<b>729</b>	<b>100.0</b>
The number of abortions in which the embryonic or fetal heartbeat of the unborn child was made audible for the pregnant woman to hear		
Yes	6	0.8
No	524	71.9
Not Applicable	199	27.3
<b>Total</b>	<b>729</b>	<b>100.0</b>

## **Acknowledgments**

Terry L. Cline, PhD  
Commissioner of Health

Kelly Baker, MPH  
Director, Center for Health Statistics

Derek Pate, DrPH  
Director, Health Care Information Division

### **Authors**

Rebecca Falkenstern, MPH  
Community Analyst, Health Care Information

Amber Freudenberger, MPH  
Staff Analyst, Health Care Information

