

HIGH PERFORMANCE ROTORS

BUILT FECON TOUGH



FGT

Versatile smooth drum rotor system with tooling options for various application. Lacing pattern maximizes energy transfer into the material while optimizing tool wear.

Double Carbide standard



The perfect balance of performance, wear life, and durability, the Double Carbide is the standard tool offered in FGT rotors to work in a wide range of applications.

Viking Sword®



Double sided and easily flipped for a brand new cutting edge. This tool is faster at cutting, resulting in a finer finished product. A tapered tool body allows chip material to flow efficiently.

High Abrasion



Carbide wear plates are added to the body of the Standard Double Carbide tool, extending useful life in highly abrasive conditions by slowing wear to the body.

Stone Tool



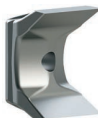
Ideal for areas where rock cannot be avoided, the FGT Stone Tool provides superior durability and wear life in more severe conditions.



DCR

Depth Control Rotor limits tool bite which creates consistant chip sizing and less HP draw from carrier. Ideal for stringy/fibrous material or when a finer finished product is required.

Viking Axe® standard



Double sided and easily flipped for a brand new cutting edge. The Viking Axe has a thick knife edge optimized for cutting stringy and fibrous vegetation.

Viking Sword®



Double sided and easily flipped for a brand new cutting edge. This tool is faster at cutting, resulting in a finer finished product. A tapered tool body allows chip material to flow efficiently.



FMX

Split ring rotor with knife tools designed to effciently mulch while maintaining higher rotor RPMs.

Cubit Knife standard



Double sided and easily flipped for a brand new cutting edge. This tool is faster at cutting, resulting in a finer finished product. A tapered tool body allows chip material to flow efficiently.

Cubit Carbide



Versatile tool for shredding material and improved durability. Ideal for applications that require ground engagement.

BULL HOG®

fecon.com

800 528 3113

sales@fecon.com

+1 513 696 4430



Whether you are buying, renting, or servicing your mulching equipment, FECON has solutions that focus on your success. Operator driven design with a global network that is woven into every product.

• Operators cab must be protected with both properly maintained 1/2" Polycarbonate Glass (or equal) and Falling Object Protection.
• Certain guarding and features may have been removed for illustrative purposes, always run with proper guarding.
• Weights may vary based on options.
• Specifications subject to change without notice.
• Photographs may have been altered for marketing purposes.
• Always insure that your carrier manufacturers safety features (including Falling Object Protection, and Roll-Over Protection) meet your job safety requirements.
• SAFETY IS THE RESPONSIBILITY OF THE OPERATOR.
• Pictures may contain optional accessories

BHY_082021

BULL HOG®

FECON®



FORESTRY

FECON.COM

800 528 3113

THE BULL HOG® ADVANTAGE

DURABILITY

- Industry leading severe-duty body construction.
- Engineered and built to withstand all types of mulching conditions.
- High Strength steel materials and quality welding process

PERFORMANCE

- Variable 2 speed motor automatically adjusts, maximizing rotor speed & torque to changing material loads.
 - ✓ For lighter material loads, higher RPM means more bites per second and finer material sizing.
 - ✓ With heavier material, the Bull Hog® delivers more rotor torque, keeping the rotor turning when other heads may stall.
- Field tested and proven to be the most productive heads available.

VERSATILITY

- Available from 50 - 600HP, Bull Hog® mulchers are designed for any machine and application.
- Available for Compact Track Loaders, Skid Steers, 5-45 ton Excavators, PTO Tractors and more!
- With various rotor and tool options, Bull Hogs® can be configured for regional or specific jobsite conditions.



CLEAR THE WAY WITH FECON® MULCHING EQUIPMENT



SKID STEER / CTL BULL HOG®

HINGED MOTOR COVERS

- Easy service
- Access without tools

PUSH BAR

- Pin-on
- Serrated ears direct material to better feed the mulcher

BOLT-ON SKID SHOES

- AR400 steel
- Less plowing of material for more uniform final results



HYDRAULIC BULL HOG®

BODY CONSTRUCTION

- Severe duty
- Durable long-lasting performance

PUSH BAR

- Standard hydraulic tilting push bar for directing cut material

BOLT-ON SKID SHOES

- AR400 steel
- Can be adjusted for desired ground engagement

TRAP DOOR

- Helps contain debris
- Achieve finer sizing

FECON Bull Hog® Mulching Head SSL & CTL	
	VM6020SS
Working Width	61"
Overall Width	76"
Flow Range	30-45 gpm
Max Pressure	6,000 psi
Max Horsepower	120 HP
Number of Tools	30

FECON Bull Hog® Mulching Head Hydraulic Ground Large Body	
	VM8620
Working Width	86"
Overall Width	101"
Flow Range	50-150 gpm
Max Pressure	6,000 psi
Max Horsepower	300 HP
Number of Tools	48



EXCAVATOR BULL HOG®

STANDARD CONFIGURATION

- Fecon Split Ring Rotor with Cubit Knife Tools
- Variable Displacement 45cc Hydraulic Motor
- Efficiently Mouch up to 5" of Material
- Adjustable Hydraulics to Match Carrier Flow and Pressure
- Configurable for Excavators and Boom Arms

FECON Bull Hog® Excavator / Boom Mulching Head 5-10 Ton		
	VMX36	VMX50
Excavator Class in Tons	5-10	5-10
Working Width	36"	50"
Overall Width	44"	58"
Flow Range	12-40 gpm	12-40 gpm
Max Pressure	4,000 psi	4,000 psi
Number of Tools	18	22



FECON Bull Hog® Excavator / Boom Mulching Head 8-15 Ton	
	VCM36
Excavator Class in Tons	8-15
Working Width	36"
Overall Width	57"
Flow Range	17-40 gpm
Max Pressure	6,000 psi
Number of Tools	18





MAKE IT
HAPPEN

FECON®

STAY BACK 300 FT/90M

STANDARD FLOW

fecon.com

800 528 3113

sales@fecon.com

+1 513 696 4430



Whether you are buying, renting,
or servicing your mulching
equipment, FECON has solutions
that focus on your success.
Operator driven design with a global
network that is woven into every
product.

- Operators cab must be protected with both properly maintained 1/2" Polycarbonate Glass (or equal) and falling object protection.
- Certain guarding and features may have been removed for illustrative purposes, always run with proper guarding.
- Weights may vary based on options.
- Specifications subject to change without notice.
- Photographs may have been altered for marketing purposes.
- Always insure that your carrier manufacturers safety features (including falling object protection, and roll-over protection) meet your job safety requirements.
- Safety is the responsibility of the operator.
- Pictures may contain optional accessories.

STANDARD FLOW

FECON®



FORESTRY MULCHERS

[FECON.COM](https://fecon.com)

800 528 3113

50" STANDARD FLOW MULCHER SPECIFICATION

FECON Bull Hog® Standard Flow Mulching Head SSL & CTL		
Model	VM5015	VM6015
Working Width	50"	60"
Overall Width	61"	71"
Weight	1,370 lbs	1,465 lbs
Flow Range	17-30 gpm	17-30 gpm
Max Pressure	4,000 psi	4,000 psi
Max Horsepower	75 HP	75 HP
Number of Tools	22	26

MAKE IT HAPPEN

ON THE FARM

- ✦ Clearing crop perimeters allows for additional sunlight exposure and results in more productive crop growth
- ✦ Clear fence rows to keep machinery from being damaged during planting, maintenance or harvest
- ✦ Complete vegetation removal down to ground level to avoid potential livestock injuries

RESIDENTIAL LANDSCAPING

- ✦ General vegetation management
- ✦ Fire prevention – create “defensible space”

RENTALS

- ✦ Easy to transport mulching head without CDL
- ✦ Adaptable to any standard flow SSL/CTL

FEATURES

- ✦ Efficiently mulch up to 5" material with the split ring rotor with knife tools
- ✦ Compact body design ensure carrier is agile in the woods
- ✦ Hinged motor cover to easily service key components

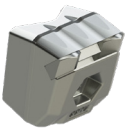
TOOL OPTIONS

Cubit Knife
standard



Double sided and easily flipped for a brand new cutting edge. This tool is faster at cutting, resulting in a finer finished product. A tapered tool body allows chip material to flow efficiently.

Cubit Carbide



Versatile tool for shredding material and improved durability. Ideal for applications that require ground engagement.

ADD ONS

CONSIDER FECONS® HYDRAULIC COOLER

Designed to be mounted on CTL and Skid Steer rooftops, our hydraulic cooler enhances the performance of the carrier by maintaining the hydraulic fluid at optimal temperature and viscosity.

FECON® 1/2" POLYCARBONATE DOOR WINDSHIELD

Form-fit 1/2" Polycarbonate Windshield required for mulching applications. Our replacement windows are formed to duplicate the OEM glass shape.



STUMPEX®



- No carbide teeth to replace
- Easy cleanup
- Safer work zone
- 3 Models available:
 - Compact Stumpex
 - SSL/CTL Stumpex
 - 12-20 Excavator Stumpex
- Standard 2-Speed Hydraulic Motor



EXCAVATOR ATTACHMENTS

fecon.com

800 528 3113

sales@fecon.com

+1 513 696 4430

Whether you are buying, renting, or servicing your mulching equipment, FECON has solutions that focus on your success. Operator driven design with a global network that is woven into every product.



• Operators cab must be protected with both properly maintained 1/2" Polycarbonate Glass (or equal) and falling object protection.
• Certain guarding and features may have been removed for illustrative purposes, always run with proper guarding.
• Weights may vary based on options.
• Specifications subject to change without notice.
• Photographs may have been altered for marketing purposes.
• Always insure that your carrier manufacturers safety features (including falling object protection, and roll-over protection) meet your job safety requirements.
• Safety is the responsibility of the operator.
• Pictures may contain optional accessories

EXC ATTACHMENTS FECON®



FORESTRY ATTACHMENTS

FECON.COM

800 528 3113

BULL HOG® MULCHERS

3.5-8 TON EXCAVATOR VMX28



- 12 - 40 Flow Range (gpm)
- 28" cutting width
- 750 lbs
- Efficiently mulch up to 5" material
- Rated to 4,000 PSI
- Variable Displacement Motor
- Fecon Split Ring Rotor w/ Cubit Knife Tools
- Adjustable Hydraulics to Match Carrier Flow and Pressure

5-10 TON EXCAVATOR VMX36 & VMX50

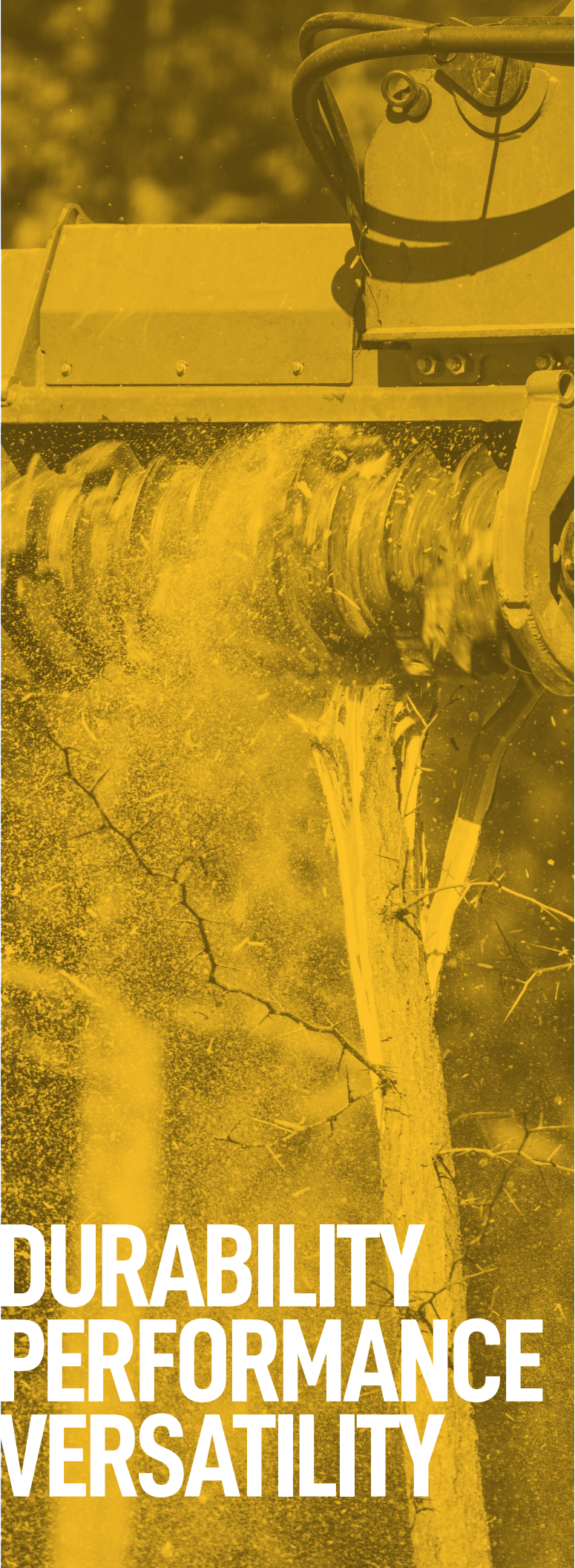


- 12 - 40 Flow Range (gpm)
- 36" and 50" cutting widths
- 850 lbs - 1,050 lbs
- Efficiently mulch up to 5" material
- Rated to 4,000 PSI
- Variable Displacement Motor
- Fecon Split Ring Rotor w/ Cubit Knife Tools
- Adjustable Hydraulics to Match Carrier Flow and Pressure

8-15 TON EXCAVATOR VCM36



- 17-40 Flow Range (gpm)
- 36" cutting width
- 1450 lbs
- Efficiently mulch up to 6" material
- Rated to 6,000 PSI
- Variable Displacement Motor
- Fecon Gringing Technology (FGT) Rotor with Double Carbide Tools
- Adjustable Hydraulics to Match Carrier Flow and Pressure



DURABILITY
PERFORMANCE
VERSATILITY

ROTORS



FGT

Versatile smooth drum rotor system with tooling options for various application. Lacing pattern maximizes energy transfer into the material while optimizing tool wear.

Double Carbide standard



The perfect balance of performance, wear life, and durability, the Double Carbide is the standard tool offered in FGT rotors to work in a wide range of applications.

Viking Sword®



Double sided and easily flipped for a brand new cutting edge. This tool is faster at cutting, resulting in a finer finished product. A tapered tool body allows chip material to flow efficiently.

High Abrasion

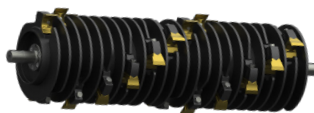


Carbide wear plates are added to the body of the Standard Double Carbide tool, extending useful life in highly abrasive conditions by slowing wear to the body.

Stone Tool



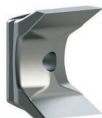
Ideal for areas where rock cannot be avoided, the FGT Stone Tool provides superior durability and wear life in more severe conditions.



DCR

Depth Control Rotor limits tool bite which creates consistant chip sizing and less HP draw from carrier. Ideal for stringy/fibrous material or when a finer finished product is required.

Viking Axe® standard



Double sided and easily flipped for a brand new cutting edge. The Viking Axe has a thick knife edge optimized for cutting stringy and fibrous vegetation.

Viking Sword®



Double sided and easily flipped for a brand new cutting edge. This tool is faster at cutting, resulting in a finer finished product. A tapered tool body allows chip material to flow efficiently.



FMX

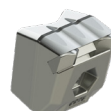
Split ring rotor with knife tools designed to effciently mulch while maintaining higher rotor RPMs.

Cubit Knife standard



Double sided and easily flipped for a brand new cutting edge. This tool is faster at cutting, resulting in a finer finished product. A tapered tool body allows chip material to flow efficiently.

Cubit Carbide



Versatile tool for shredding material and improved durability. Ideal for applications that require ground engagement.

BHP270

- Equipped with Fecon Power Management
- Dramatically improves engine response/recovery
- Sustained peak grinding power
- Reduced fuel consumption
- Optimized operator feedback
- Limited stalling
- Quicker recovery
- Maximized productivity
- Modular design for BHP270

Mulch brush, branches, slash, standing and fallen trees, root balls and stumps faster and more effectively than before!

Bull Hog Excavator Mulchers are often powered by the excavator's hydraulic system. However, when absolute maximum productivity is required a Bull Hog Power Pack provides the ultimate solution.

