




| | |
|----|------------------------|
| 21 | CIVIL ENGINEERING |
| 20 | |
| 19 | STRUCTURAL ENGINEERING |
| 18 | |
| 17 | MEP ENGINEERING |
| 16 | |

BEAVERS BEND STATE PARK
 4350 OK-259A
 BROKEN BOW, OK 74728

| | | |
|----|-----------|---|
| 11 | CLIENT | SWADLEY'S WORLD FAMOUS BAR-B-Q |
| 10 | PROJECT # | 21024 |
| 9 | ISSUED BY | DRAWN BY / CHECKED BY Author Checker |

| 8 | 7 | 6 | 5 | 4 | 3 | 2 | 1 |
|-----|-------------|------|---|---|---|---|---|
| No. | Description | Date | | | | | |
| | | | | | | | |
| | | | | | | | |
| | | | | | | | |
| | | | | | | | |
| | | | | | | | |
| | | | | | | | |
| | | | | | | | |
| | | | | | | | |
| | | | | | | | |
| | | | | | | | |

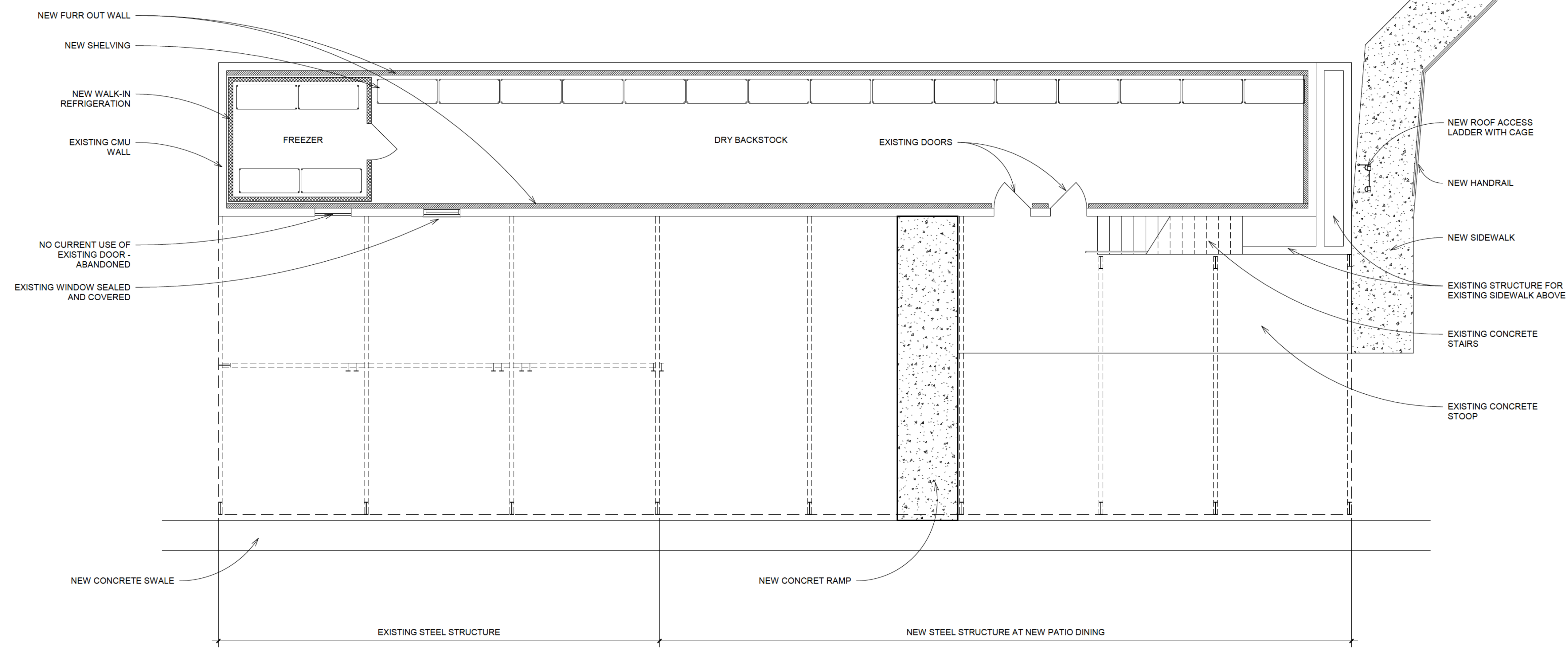
5 SEAL 07/28/21



ISSUED FOR: PERMIT DRAWINGS

NOTE:
 INTEGRATED ARCHITECTURE WAS NOT INVOLVED PRIOR TO OR DURING THE REMODEL OF THE FOGGY BOTTOM KITCHEN RESTAURANT. DRAWINGS AND DOCUMENTS CONSIST OF INFORMATION PROVIDED TO INTEGRATED ARCHITECTURE BY THE STATE OF OKLAHOMA, SWADLEY'S WORLD FAMOUS BAR-B-Q AND ON-SITE VERIFICATION OF CURRENT SITE CONDITIONS ALSO CONTRIBUTED TO INFORMATION SUBMITTED.

3 SHEET NAME
ARCHITECTURAL SITE PLAN



INDICATES NEW WALL

STRUCTURAL ENGINEERING

MEP ENGINEERING

BEAVERS BEND STATE PARK
 4350 OK-259A
 BROKEN BOW, OK 74728

CLIENT
 SWADLEY'S WORLD FAMOUS BAR-B-Q

PROJECT # 21024

ISSUED BY / DRAWN BY / CHECKED BY
 Author Checker

REVISIONS

| No. | Description | Date |
|-----|-------------|------|
| | | |
| | | |
| | | |
| | | |
| | | |
| | | |
| | | |
| | | |
| | | |
| | | |

SEAL 07/28/21

MARK D. GANDY
 3254

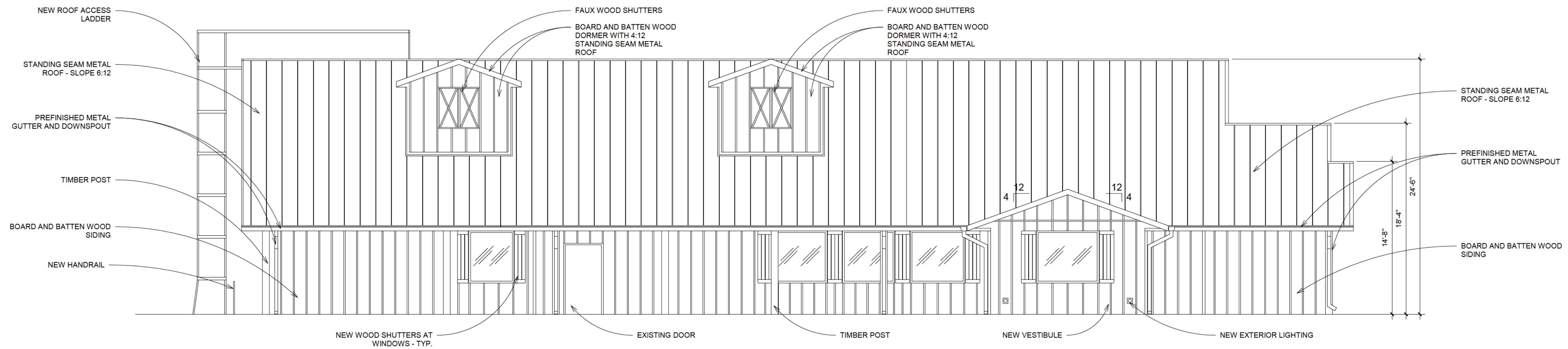
ISSUED FOR: PERMIT DRAWINGS

SHEET NAME
CURRENT LOWER LEVEL FLOOR PLAN

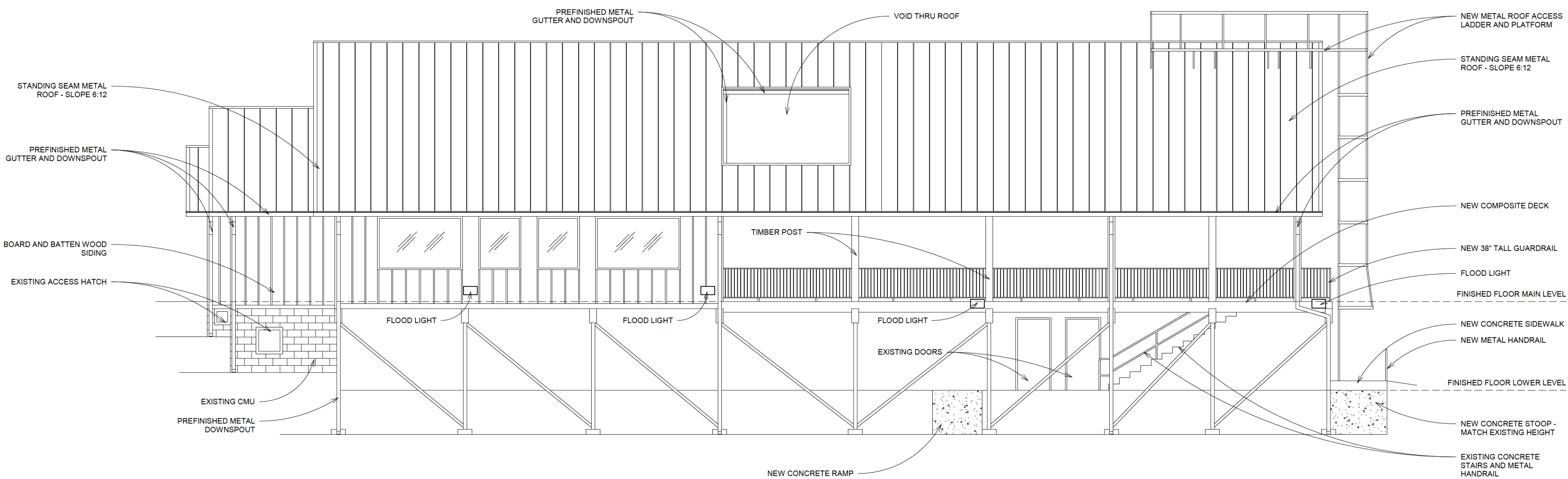
SHEET NUMBER
A102

NOTE:

INTEGRATED ARCHITECTURE WAS NOT INVOLVED PRIOR TO OR DURING THE REMODEL OF THE FOGGY BOTTOM KITCHEN RESTAURANT. DRAWINGS AND DOCUMENTS CONSIST OF INFORMATION PROVIDED TO INTEGRATED ARCHITECTURE BY THE STATE OF OKLAHOMA, SWADLEY'S WORLD FAMOUS BAR-B-Q AND ON-SITE VERIFICATION OF CURRENT SITE CONDITIONS ALSO CONTRIBUTED TO INFORMATION SUBMITTED.



1 EXTERIOR ELEVATION FRONT
3/16" = 1'-0"



2 EXTERIOR ELEVATION REAR
3/16" = 1'-0"

INTEGRATED ARCHITECTURE
www.integratedarc.com
P.O. Box 7808 Edmond, OK 73078 (405) 255-4243
CIVIL ENGINEERING

STRUCTURAL ENGINEERING

MEP ENGINEERING

BEAVERS BEND STATE PARK

4350 OK-259A
BROKEN BOW, OK 74728

CLIENT
SWADLEY'S WORLD FAMOUS BAR-B-Q

PROJECT # 21024

ISSUED BY / CHECKED BY
Author Checker

REVISIONS

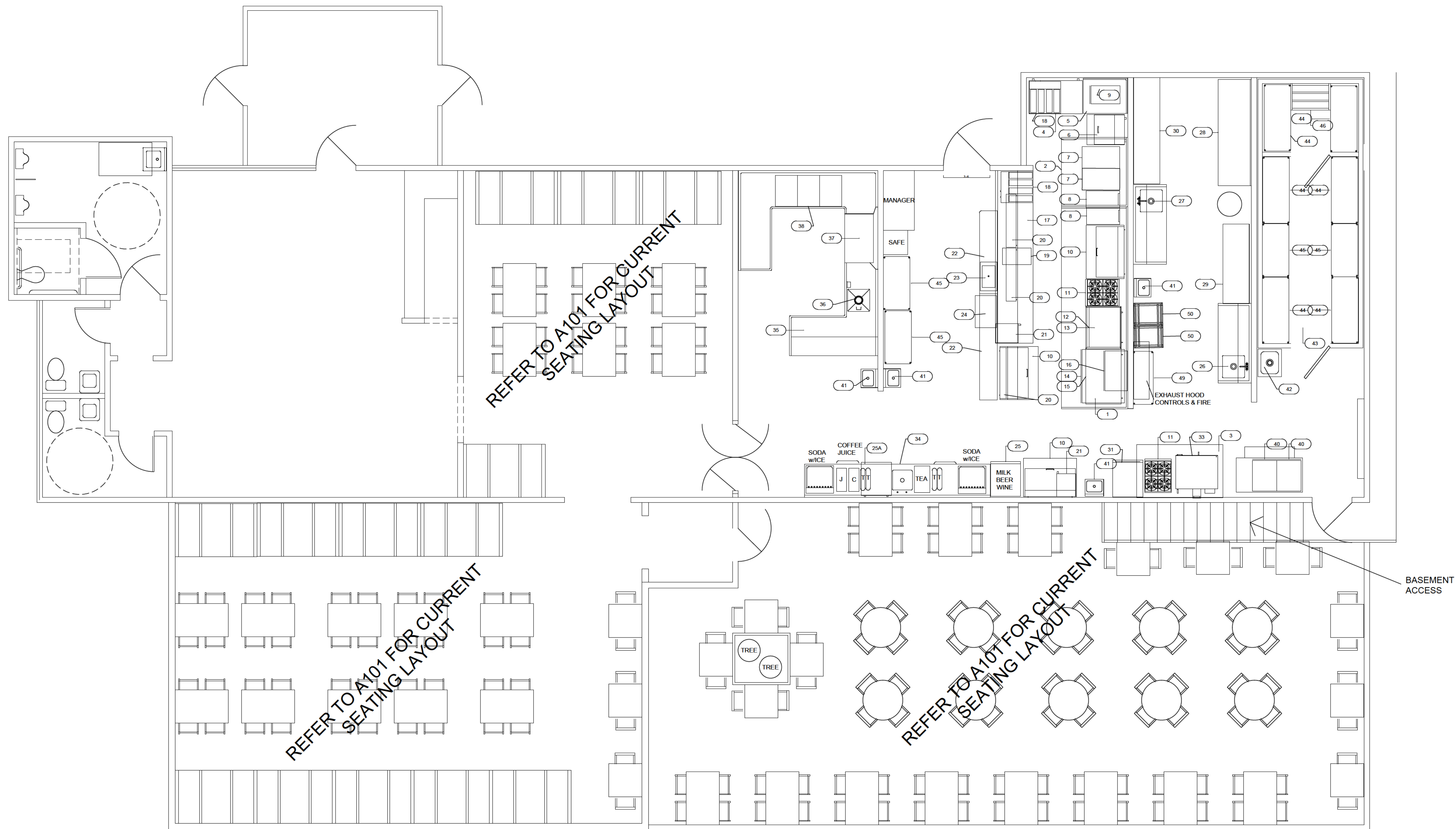
| No. | Description | Date |
|-----|-------------|------|
| | | |
| | | |
| | | |
| | | |
| | | |
| | | |
| | | |
| | | |
| | | |
| | | |

SEAL 07/28/21



SHEET NAME
EXTERIOR ELEVATIONS

SHEET NUMBER
A201



General Notes

| | | |
|-----|-------------------|------|
| | MARCH 2, 2020 | |
| | REV JUNE 23, 2020 | |
| No. | Revision/Issue | Date |



Project Name and Address

**BEAVERS BEND
KITCHEN PLAN REV**

| | |
|---------|------------|
| Project | Sheet |
| Date | |
| Scale | 1/4" SCALE |

General Notes

| UTILITY SCHEDULE | | | | | | | | | | | | | | PLUMBING | | | | HVAC/CONDITIONS | | | | ELECTRICAL | | |
|------------------|----------|--|-----------------------|------------------|---------|-------|---------|-------|-----|------|----------------|-------|-----------------|----------------|---------------------|-------------------|--------------|-----------------|---------------|----------------|--------------|---------------|--------------------|-------------------|
| ItemNo | Quantity | Category | Mfr | Model | Voltage | Phase | Amps | Cycle | Hp | Kw | ConnectionType | NEMA | Cold Water (in) | Hot Water (in) | Indirect Waste Size | Direct Waste Size | Gas Size(in) | Gas MBTU | Exhaust (CFM) | Exhaust (SPWG) | Makeup (CFM) | Makeup (SPWG) | Electrical Remarks | |
| 1 | 1 | Exhaust Hood | Captive-Aire | CUSTOM | 208 | 3 | 15 | | 5 | | | | | | | | | | | 3750 | 1.75" | 2400 | .5" | |
| 2 | 1 | Exhaust Hood | Captive-Aire | CUSTOM | 208 | 3 | 7.7 | | 2 | | | | | | | | | | | 3750 | 1.75" | 2400 | .5" | |
| 3 | 1 | Exhaust Hood | QSI | CUSTOM | 120 | 1 | 8.3 | | 5 | | | | | | | | | | | 800 | .5 | 800 | .5 | |
| 4 | 1 | Reach-In Undercounter Freezer | Turbo Air | TUF-48SD-D4-N | 115 | 1 | 2.8 | 60 | 1/3 | | Cord & Plug | 5-15P | | | | | | | | | | | | |
| 5 | 1 | Corner Filler | QSI | CUSTOM | | | | | | | | | | | | | | | | | | | | |
| 6 | 1 | Mega Top Sandwich / Salad Preparation Refrigerator | Turbo Air | TST-28SD-12-N | 115 | 1 | 6.6 | 60 | 1/6 | | Cord & Plug | 5-15P | | | | | | | | | | | | |
| 7 | 2 | Gas Floor Fryer | Pitco | SG18-S | | | | | | | | | | | | | 3/4" | 140.0 | | | | | | |
| 8 | 2 | Gas Connector Hose Kit / Assembly | Krowne | M7548K | | | | | | | | | | | | | 3/4" | 90.0 | | | | | | |
| 9 | 1 | Fryer Filter, Mobile | R. F. Hunter | HF 80P | 110-115 | 1 | 8.8-7.4 | 60 | 1/2 | | Cord & Plug | 5-15P | | | | | | | | | | | | |
| 10 | 3 | Mega Top Sandwich / Salad Preparation Refrigerator | Arctic Air | AMT48R | | | 4.3 | | 1/2 | | Cord & Plug | 5-15P | | | | | | | | | | | | |
| 11 | 2 | Hotplate, Countertop, Gas | Grindmaster-Cecilware | HPCP424 | | | | | | | | | | | | | | | | | | | | |
| 12 | 2 | Gas Connector Hose Kit / Assembly | Krowne | M7548K | | | | | | | | | | | | | | | | | | | | |
| 13 | 1 | Refrigerated Chef Base | Arctic Air | ARCB36 | | | 2.1 | | 1/3 | | Cord & Plug | 5-15P | | | | | | | | | | | | |
| 14 | 1 | Gas Countertop Griddle | AccuTemp | GGF1201A4850-T1 | 120 | 1 | | 60 | | | Cord & Plug | 5-15P | | | | | 3/4" | 85.0 | | | | | | |
| 15 | 1 | Refrigerated Chef Base | Arctic Air | ARCB48 | | | 2.1 | | 1/3 | | Cord & Plug | 5-15P | | | | | | | | | | | | |
| 16 | 1 | Cheesemelter, Gas | Turbo Air | TACM-36 | | | | | | | | | | | | | 3/4" | 35.0 | | | | | | |
| 17 | 1 | Expo Counter | QSI | EXPO COUNTER | | | | | | | | | | | | | | | | | | | | |
| 18 | 2 | French Fry Warmer | Carter-Hoffmann | CNH28 | 208 | 1 | 14.0 | 60 | | 2.89 | | 6-20P | | | | | | | | | | | | |
| 19 | 1 | Hot Food Well Unit, Drop-In, Electric | Vollrath | 3646611 | 120 | 1 | 8.3 | 60 | 1 | | Cord & Plug | 5-15P | | | 1/2" | | | | | | | | | |
| 20 | 3 | Heat Lamp | Hatco | GRAL-48 | 120 | 1 | | 60 | | 1.04 | | | | | | | | | | | | | | |
| 21 | 2 | Microwave Oven | Sharp | R-CD2200M | 230/208 | 1 | 14/16 | 60 | | 2.2 | Cord & Plug | 6-20P | | | | | | | | | | | | |
| 22 | 1 | Server Counter | QSI | CUSTOM | | | | | | | | | | | | | | | | | | | | |
| 23 | 1 | Cold Food Well Unit, Drop-In, Refrigerated | Vollrath | FC-4C-01120-R | 120 | 1 | 3.5 | 60 | 1/5 | | Cord & Plug | 5-15P | | | 1" | | | | | | | | | |
| 24 | 1 | Warming Drawer, Free Standing | Toastmaster | 3B84DT09 | 120 | 1 | 7.8 | 60 | | 9 | Cord & Plug | 5-15P | | | | | | | | | | | | |
| 25 | 1 | Reach-in Refrigerator | Arctic Air | AGR23 | 115 | 1 | 2.6 | 60 | 1/4 | | Cord & Plug | 5-15P | | | | | | | | | | | | |
| 25A | 1 | Undercounter Refrigerator | Turbo Air | TUR-28SD-N | 115 | 1 | 2.2 | 60 | 1/5 | | Cord & Plug | 5-15P | | | | | | | | | | | | |
| 26 | 1 | Table, Utility | QSI | PREP SINK | | | | | | | | | | | | | | | | | | | | |
| 27 | 1 | Table, Utility | QSI | PREP SINK | | | | | | | | | | | | | | | | | | | | |
| 28 | 1 | Work Table, Stainless Steel Top | Advance Tabco | TKM5LAG-308-X | | | | | | | | | | | | | | | | | | | | |
| 29 | 1 | Work Table, Stainless Steel Top | Advance Tabco | EDS-12-96-X | | | | | | | | | | | | | | | | | | | | |
| 30 | 1 | Work Table, Stainless Steel Top | Advance Tabco | SFLAG-246-X | | | | | | | | | | | | | | | | | | | | |
| 31 | 1 | Mobile Heated Cabinet | Metro | C539-HLFC-U | 120 | 1 | 12.0 | 60 | | 1.44 | Cord & Plug | 5-15P | | | | | | | | | | | | |
| 33 | 1 | Convection Oven, Gas | Southbend | BGS/22SC | 120 | 1 | 7.9 | 60 | 1/2 | | Cord & Plug | 5-15P | | | | | 3/4" | 54.0 | | | | | | Top oven |
| 33 | 1 | Convection Oven, Gas | Southbend | BGS/22SC | 120 | 1 | 7.9 | 60 | 1/2 | | Cord & Plug | 5-15P | | | | | 3/4" | 54.0 | | | | | | Bottom oven |
| 35 | 1 | Dishwasher, Soiled | QSI | SOILED DISHTABLE | | | | | | | | | | | | | | | | | | | | |
| 36 | 1 | Disposer | Salvador | 200-SA-6-MRSS | 230 | 1 | 12 | 60 | 2 | | Direct | | 1/2" | | | 2" | | | | | | | | |
| 37 | 1 | Disposer, Parts & Accessories | Salvador | LSA8 | | | | | | | | | | | | | | | | | | | | |
| 38 | 1 | Dishwasher, Door Type, LOW TEMP | Champion | UNKNOW/N | 120 | | | | 2 | | | | 0 | 3/4" | 1-1/2" | | | | | | | | | |
| 39 | 1 | Sink, (3) Three Compartment | QSI | CUSTOM | | | | | | | | | 1/2" | 1/2" | 1.5 | | | | | | | | | |
| 40 | 1 | Beverage Counter | QSI | CUSTOM | | | | | | | | | | | | | | | | | | | | |
| 41 | 1 | Ice & Water Dispenser | Advance Tabco | D-24-WSIBL2-X | | | | | | | | | 1/2" | | | | | | | | | | | |
| 42 | 1 | Glass Filler | Advance Tabco | K-54A | | | | | | | | | 1/2" | | | | | | | | | | | |
| 43 | 2 | Nugget Ice Maker | Hoshizaki | F-1002MWJ-C | 115 | 1 | 13.7 | 60 | | | | | 1/2" | | | | | | | | | | | |
| 44 | 1 | Ice Bin for Ice Machines | Hoshizaki | B-1650SS | | | | | | | | | 1/2" | | | | | | | | | | | |
| 45 | 1 | Top Kit | Hoshizaki | HS-2111 | | | | | | | | | 1/2" | | | | | | | | | | | |
| 46 | 2 | Water Filtration System, for Ice Machines | Hoshizaki | HDI-11 | | | | | | | | | 1/2" | | | | | | | | | | | |
| 47 | 4 | Hand Sink | Advance Tabco | 7-PS-EC-SP-1X | | | | | | | | | 1/2" | 1/2" | | | 2" | | | | | | | |
| 48 | 1 | Mop Sink | Advance Tabco | 9-OP-20-EC-X | | | | | | | | | 1/2" | 1/2" | | | 2" | | | | | | | |
| 49 | 1 | Service Faucet | Advance Tabco | K-240-X | | | | | | | | | 1/2" | 1/2" | | | 2" | | | | | | | |
| 50 | 1 | Walk In Cooler, Modular, Remote | Arctic Industries | WALK IN | 115 | 1 | .8 | 60 | | | | | | | | | | | | | | | | DOOR HEATER/LIGHT |
| 51 | 1 | LED LIGHT FIXTURE | Arctic Industries | LED LIGHT | 120 | 1 | 2 | | | | | | | | | | | | | | | | | |
| 52 | 1 | REFRIGERATION | Arctic Industries | REFRIGERATION | 208 | 1 | 1.5 | 60 | 7/8 | | | | | | 1 | | | | | | | | | |
| 53 | 1 | REFRIGERATION | Arctic Industries | REFRIGERATION | 115 | 1 | 1.8 | 60 | | | | | | | | | | | | | | | | |
| 54 | 1 | REFRIGERATION | Arctic Industries | REFRIGERATION | 208 | 1 | 32 | 60 | 2.5 | | | | | | 1 | | | | | | | | | |
| 55 | 1 | REFRIGERATION | Arctic Industries | REFRIGERATION | 115 | 1 | 87 | 60 | | | | | | | | | | | | | | | | |
| 56 | 1 | REFRIGERATION | Arctic Industries | REFRIGERATION | 115 | 1 | 10 | 60 | | | | | | | | | | | | | | | | |
| 57 | 1 | Dunnage Rack | John Boos | ALJB362412-X | | | | | | | | | | | | | | | | | | | | |
| 58 | 24 | Wire Shelving | Quantum Food Service | 2460GY | | | | | | | | | | | | | | | | | | | | |
| 59 | 6 | Post | Quantum Food Service | P63GY | | | | | | | | | | | | | | | | | | | | |
| 60 | 6 | Casters | Quantum Food Service | WR-00H | | | | | | | | | | | | | | | | | | | | |
| 61 | 44 | Wire Shelving Unit | Quantum Food Service | WR74-2460GY | | | | | | | | | | | | | | | | | | | | |
| 62 | 45 | Wire Shelving Unit | Quantum Food Service | WR74-2448GY | | | | | | | | | | | | | | | | | | | | |
| 63 | 46 | Dunnage Rack | John Boos | ALJB362412-X | | | | | | | | | | | | | | | | | | | | |
| 64 | 47 | Wire Shelving Unit | Quantum Food Service | WR74-1848GY | | | | | | | | | | | | | | | | | | | | |
| 65 | 4 | Track Shelving Kit | Quantum Food Service | HD18-2 | | | | | | | | | | | | | | | | | | | | |
| 66 | 1 | Track Shelving Kit | Quantum Food Service | QVTRK-2-10EST | | | | | | | | | | | | | | | | | | | | |
| 67 | 48 | Wire Shelving Unit | NEXEL | DS2448N | | | | | | | | | | | | | | | | | | | | |
| 68 | 49 | Wire Shelving Unit | Quantum Food Service | WR74-1848GY | | | | | | | | | | | | | | | | | | | | |
| 69 | 50 | Bun / Sheet Pan Rack | Advance Tabco | PR20-3W | | | | | | | | | | | | | | | | | | | | |
| 70 | 5 | Pan Stop | Advance Tabco | RA-10 | | | | | | | | | | | | | | | | | | | | |
| 71 | 51 | Delivery | QFI | DELIVERY | | | | | | | | | | | | | | | | | | | | |

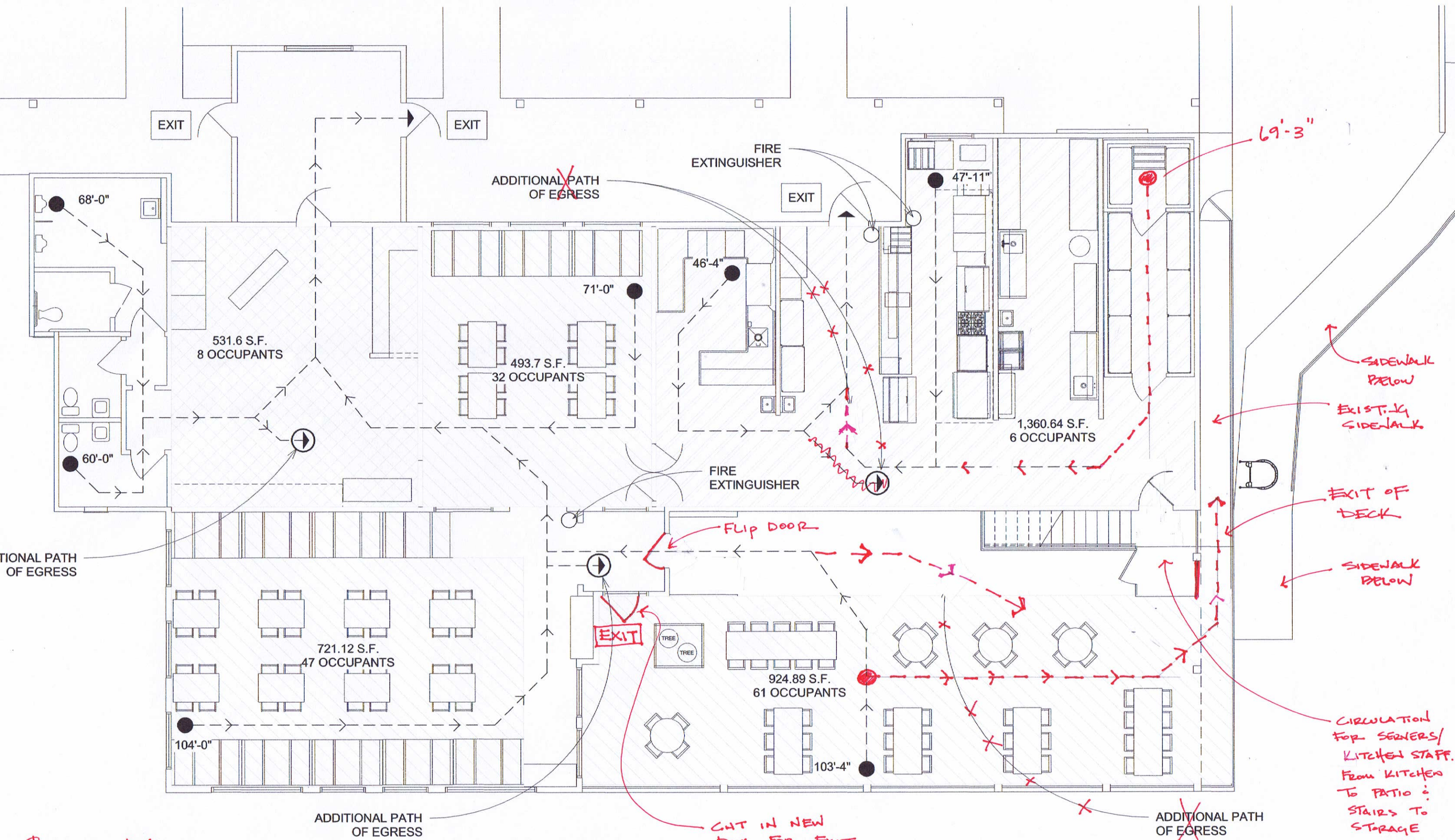
| | |
|-------------------|----------------|
| MARCH 2, 2020 | |
| REV JUNE 23, 2020 | |
| No. | Revision/Issue |
| | Date |



Project Name and Address

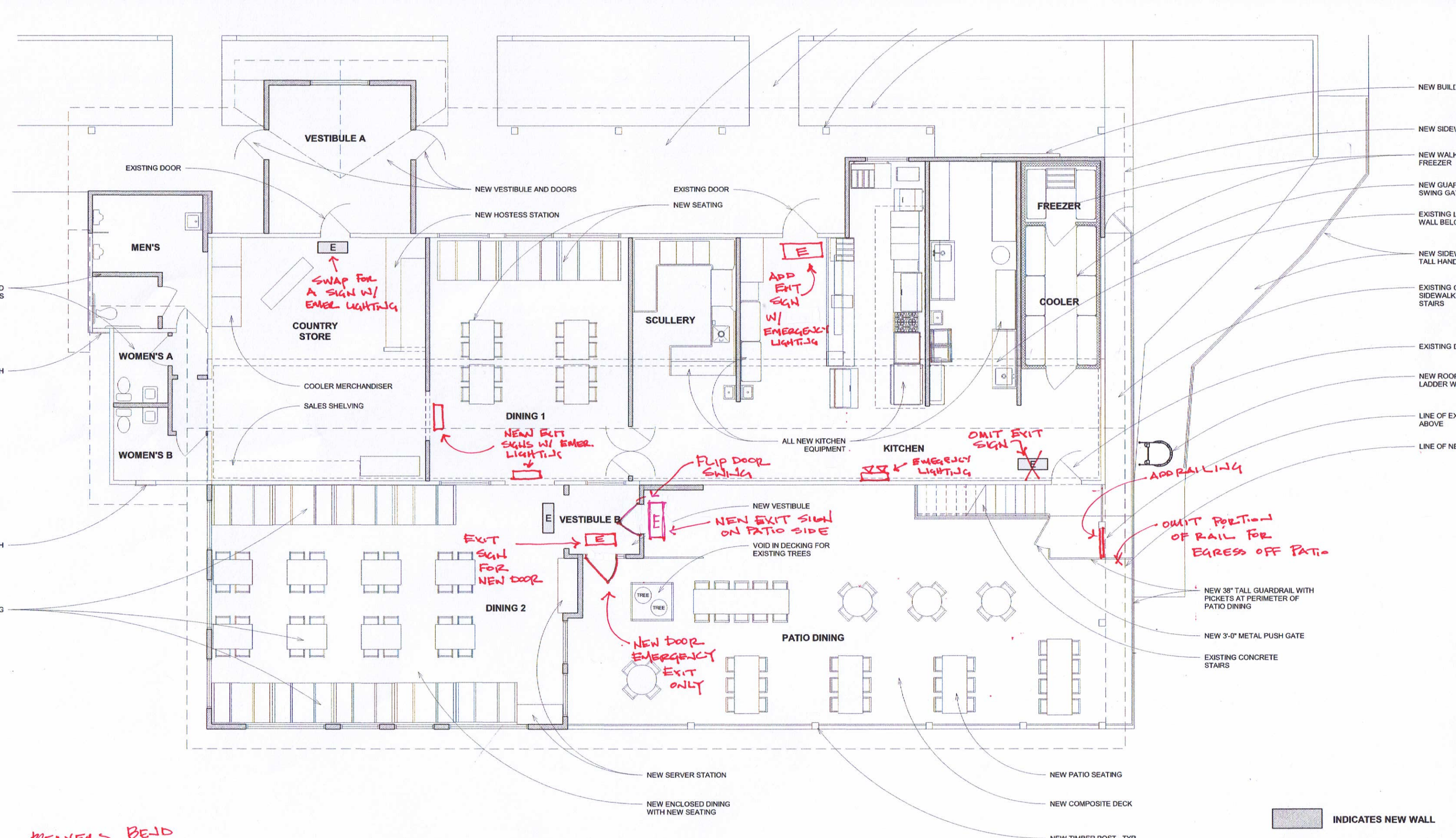
BEAVERS BEND EQUIPMENT SCHEDULE

| | |
|---------|-------|
| Project | Sheet |
| Date | |



DEVIENS BELD
8.13.21

MAIN LEVEL DINING AREAS



WEAVERS BLDG
8.13.21

INDICATES NEW WALL
E EXIT SIGN
CURRENTLY NO EMERGENCY LIGHTING

NEW BUILD
 NEW SIDEWALK
 NEW WALKWAY
 NEW GUARDRAIL
 SWING GATE
 EXISTING WALL BELOW
 NEW SIDEWALK
 TALL HANDRAIL
 EXISTING SIDEWALK
 STAIRS
 EXISTING DECK
 NEW ROOF
 LADDER WALKWAY
 LINE OF EXISTING
 ABOVE
 LINE OF NEW

OMIT PORTION
 OF RAIL FOR
 EGRESS OFF PATIO
 NEW 38" TALL GUARDRAIL WITH
 PICKETS AT PERIMETER OF
 PATIO DINING
 NEW 3'-0" METAL PUSH GATE
 EXISTING CONCRETE
 STAIRS

ADD EXIT
 SIGN
 W/
 EMERGENCY
 LIGHTING

SWAP FOR
 A SIGN W/
 EMER. LIGHTING

NEW EXIT
 SIGNS W/ EMER.
 LIGHTING

OMIT EXIT
 SIGN

FLIP DOOR
 SWING

NEW EXIT SIGN
 ON PATIO SIDE

EXIT
 SIGN
 FOR
 NEW DOOR

NEW DOOR
 EMERGENCY
 EXIT
 ONLY

NEW SERVER STATION
 NEW ENCLOSED DINING
 WITH NEW SEATING

NEW PATIO SEATING
 NEW COMPOSITE DECK
 NEW TIMBER POST - TYP

NEW VESTIBULE AND DOORS
 NEW HOSTESS STATION

EXISTING DOOR
 NEW SEATING

ALL NEW KITCHEN
 EQUIPMENT

EXISTING DOOR

VESTIBULE A

MEN'S

WOMEN'S A

WOMEN'S B

COUNTRY STORE

COOLER MERCHANDISER
SALES SHELVING

DINING 1

SCULLERY

KITCHEN

FREEZER

COOLER

VESTIBULE B

DINING 2

PATIO DINING

NEW SERVER STATION

NEW ENCLOSED DINING WITH NEW SEATING

NEW PATIO SEATING

NEW COMPOSITE DECK

NEW TIMBER POST - TYP

NEW VESTIBULE AND DOORS

NEW HOSTESS STATION

EXISTING DOOR

NEW SEATING

ADD EXIT SIGN W/ EMERGENCY LIGHTING

SWAP FOR A SIGN W/ EMER. LIGHTING

NEW EXIT SIGNS W/ EMER. LIGHTING

OMIT EXIT SIGN

FLIP DOOR SWING

NEW EXIT SIGN ON PATIO SIDE

EXIT SIGN FOR NEW DOOR

NEW DOOR EMERGENCY EXIT ONLY

NEW SERVER STATION

NEW ENCLOSED DINING WITH NEW SEATING

NEW PATIO SEATING

NEW COMPOSITE DECK

NEW TIMBER POST - TYP

NEW VESTIBULE AND DOORS

NEW HOSTESS STATION

EXISTING DOOR

NEW SEATING

ADD EXIT SIGN W/ EMERGENCY LIGHTING

SWAP FOR A SIGN W/ EMER. LIGHTING

NEW EXIT SIGNS W/ EMER. LIGHTING

OMIT EXIT SIGN

FLIP DOOR SWING

NEW EXIT SIGN ON PATIO SIDE

EXIT SIGN FOR NEW DOOR

NEW DOOR EMERGENCY EXIT ONLY

NEW SERVER STATION

NEW ENCLOSED DINING WITH NEW SEATING

NEW PATIO SEATING

NEW COMPOSITE DECK

NEW TIMBER POST - TYP

NEW VESTIBULE AND DOORS

NEW HOSTESS STATION

EXISTING DOOR

NEW SEATING

ADD EXIT SIGN W/ EMERGENCY LIGHTING

SWAP FOR A SIGN W/ EMER. LIGHTING

NEW EXIT SIGNS W/ EMER. LIGHTING

OMIT EXIT SIGN

FLIP DOOR SWING

NEW EXIT SIGN ON PATIO SIDE

EXIT SIGN FOR NEW DOOR

NEW DOOR EMERGENCY EXIT ONLY

NEW SERVER STATION

NEW ENCLOSED DINING WITH NEW SEATING

NEW PATIO SEATING

NEW COMPOSITE DECK

NEW TIMBER POST - TYP

NEW VESTIBULE AND DOORS

NEW HOSTESS STATION

EXISTING DOOR

NEW SEATING

ADD EXIT SIGN W/ EMERGENCY LIGHTING

SWAP FOR A SIGN W/ EMER. LIGHTING

NEW EXIT SIGNS W/ EMER. LIGHTING

OMIT EXIT SIGN

FLIP DOOR SWING

NEW EXIT SIGN ON PATIO SIDE

EXIT SIGN FOR NEW DOOR

NEW DOOR EMERGENCY EXIT ONLY

NEW SERVER STATION

NEW ENCLOSED DINING WITH NEW SEATING

NEW PATIO SEATING

NEW COMPOSITE DECK

NEW TIMBER POST - TYP