

BUILDING CODE

BUILDING CODE EDITION: INTERNATIONAL BUILDING CODE 2015
 MECHANICAL CODE EDITION: INTERNATIONAL MECHANICAL CODE 2015
 ELECTRICAL CODE EDITION: NATIONAL ELECTRICAL CODE 2014
 PLUMBING CODE EDITION: INTERNATIONAL PLUMBING CODE 2015
 FIRE CODE EDITION: INTERNATIONAL FIRE CODE 2015
 ACCESSIBILITY CODE EDITION: 2010 ADA STANDARDS FOR ACCESSIBLE DESIGN

BUILDING DATA

GROSS BUILDING AREA: 7,846.56 SQFT (GROSS)
 FIRE SPRINKLERS: FULLY SPRINKLED
 OCCUPANCY: USE GROUP A-2
 CONSTRUCTION TYPE: V-B
 NUMBER OF STORIES: 1
 BUILDING HEIGHT: 24'-4"

FIRE RESISTANCE RATING (TABLE 601)

PRIMARY STRUCTURAL FRAME: 0 HOURS
 BEARING WALLS EXTERIOR: 0 HOURS
 BEARING WALLS INTERIOR: 0 HOURS
 NON BEARING WALLS AND PARTITIONS, EXTERIOR: 0 HOURS
 NON BEARING WALLS AND PARTITIONS, INTERIOR: 0 HOURS
 FLOOR CONSTRUCTION: 0 HOURS
 ROOF CONSTRUCTION: 0 HOURS
 CONSTRUCTION TYPE: 0 HOURS
 NUMBER OF STORIES: 0 HOURS
 BUILDING HEIGHT: 0 HOURS

ALLOWABLE BUILDING HEIGHTS AND AREAS

MAXIMUM BUILDING HEIGHT IN FEET (STORIES)
 (TABLE 504.3, TABLE 504.4)

FULLY SPRINKLED: 60'-0" (2 STORIES)

MAXIMUM BUILDING AREA (506.2.1)
 $A_n = A_1 + (N_s \cdot A_s)$
 $l_i = [F/P - .25]W/30$
 $W = (82.5' \times 30) + (151.5' \times 30) + (82.5' \times 30) + (151.5' \times 30)$
 $488'$
 $W = 2,475 + 4,545 + 2,475 + 4,545$
 $488'$
 $W = 14,040 / 30$
 468
 $l_i = [468/468 - .25]30/30$
 $l_i = .75$
 $A_n = 24,000 + (6,000 \times .75)$
 $A_n = 24,000 + 4,500$
 $A_n = 28,500$ SQFT

EGRESS WIDTH / EXIT ACCESS

EGRESS WIDTH
 MINIMUM CORRIDOR WIDTH (TABLE 1020.2): 44"
 MINIMUM NUMBER OF EXITS (TABLE 1006.3.1): 2
 BUILDING EGRESS WIDTH (1005.3.2): $220 \times .2' = 44 / 2 = 22'$

EXIT ACCESS
 TRAVEL DISTANCE (TABLE 1017.2)
 FULLY SPRINKLED: 250'-0"
 DEAD ENDS (1020.4)
 FULLY SPRINKLED: 50'-0"

OCCUPANCY ALLOWANCE:
 INTERNATIONAL BUILDING CODE 2015

TABLE 1004.1.2
 MAXIMUM FLOOR AREA ALLOWANCES PER OCCUPANT

FUNCTION OF SPACE	ALLOWANCE	AREA	OCCUPANTS
ASSEMBLY - WITH FIXED SEATS	OCCUPANT BY SEAT	---	60
ASSEMBLY - WITHOUT FIXED SEATS - UNCONCENTRATED	15 NET	PER PLAN	159
ASSEMBLY STANDING ROOM	5 NET	259.02 SQFT	23
KITCHEN, COMMERCIAL	200 GROSS	798.25 SQFT	8
ACCESSORY STORAGE	300 GROSS	678.61 SQFT	1
TOTAL OCCUPANCY ALLOWANCE			251

INTEGRATED ARCHITECTURE
 www.integratedarc.com
 P.O. Box 7808 Edmond, OK 73078 (405) 255-4243
 CIVIL ENGINEERING

STRUCTURAL ENGINEERING
 360 Engineering Group, PLLC
 www.360enggroup.com
 1201 East 3rd Street
 Tulsa, OK 74120
 918.518.1124
 Certificate of Authorization: OK #5996 | EXP 6.30.2022

MEP ENGINEERING
PEC
 PROFESSIONAL ENGINEERING CONSULTANTS, P.A.
 1921 E. WESTERN AVE., SUITE 100 OKLAHOMA CITY, OK 73110
 405-735-8939 www.pec1.com C.O.A. 1948 PEELS EXPIRES JUNE 30, 2021

ROBBERS CAVE STATE PARK

CLIENT: STATE OF OKLAHOMA / SWADLEY'S
 PROJECT #: 20011
 ISSUED BY: CT DRAWN BY / CHECKED BY: MG
 REVISIONS:

No.	Description	Date
1	FIRE MARSHAL COMMENTS	11/30/20

SEAL: MARK D. GANDY, 3254, 12-20-20

SHEET NAME: LIFE SAFETY PLAN
 SHEET NUMBER: ALSP



SITE PLAN WAS CREATED WITH THE
 ABSENCE OF A FULL TOPOGRAPHICAL /
 ALTA SURVEY
 CONTRACTOR SHALL VERIFY EXISTING SITE
 CONDITIONS PRIOR TO CONSTRUCTION

1 OVERALL SITE PLAN
 1" = 30'-0"

INTEGRATED ARCHITECTURE
 www.integratedarc.com
 P.O. Box 7808 Edmond, OK 73078 (405) 255-4243
 CIVIL ENGINEERING

STRUCTURAL ENGINEERING
 360 Engineering Group, PLLC
 www.360enggroup.com
 1201 East 3rd Street
 Tulsa, OK 74120
 918.518.1124
 Certificate of Authorization:
 OK #5996 | EXP 6.30.2022

MEP ENGINEERING
PEC
 PROFESSIONAL ENGINEERING CONSULTANTS, P.A.
 1821 S. WESTERN AVE., SUITE 100 OKLAHOMA CITY, OK 73109
 405-735-8939 www.pec1.com C.O.A. 1049 PEELS EXPIRES JUNE 30, 2021

ROBBERS CAVE STATE PARK

CLIENT
 STATE OF OKLAHOMA /
 SWADLEY'S

PROJECT # 20011

ISSUED BY CT DRAWN BY / CHECKED BY MG

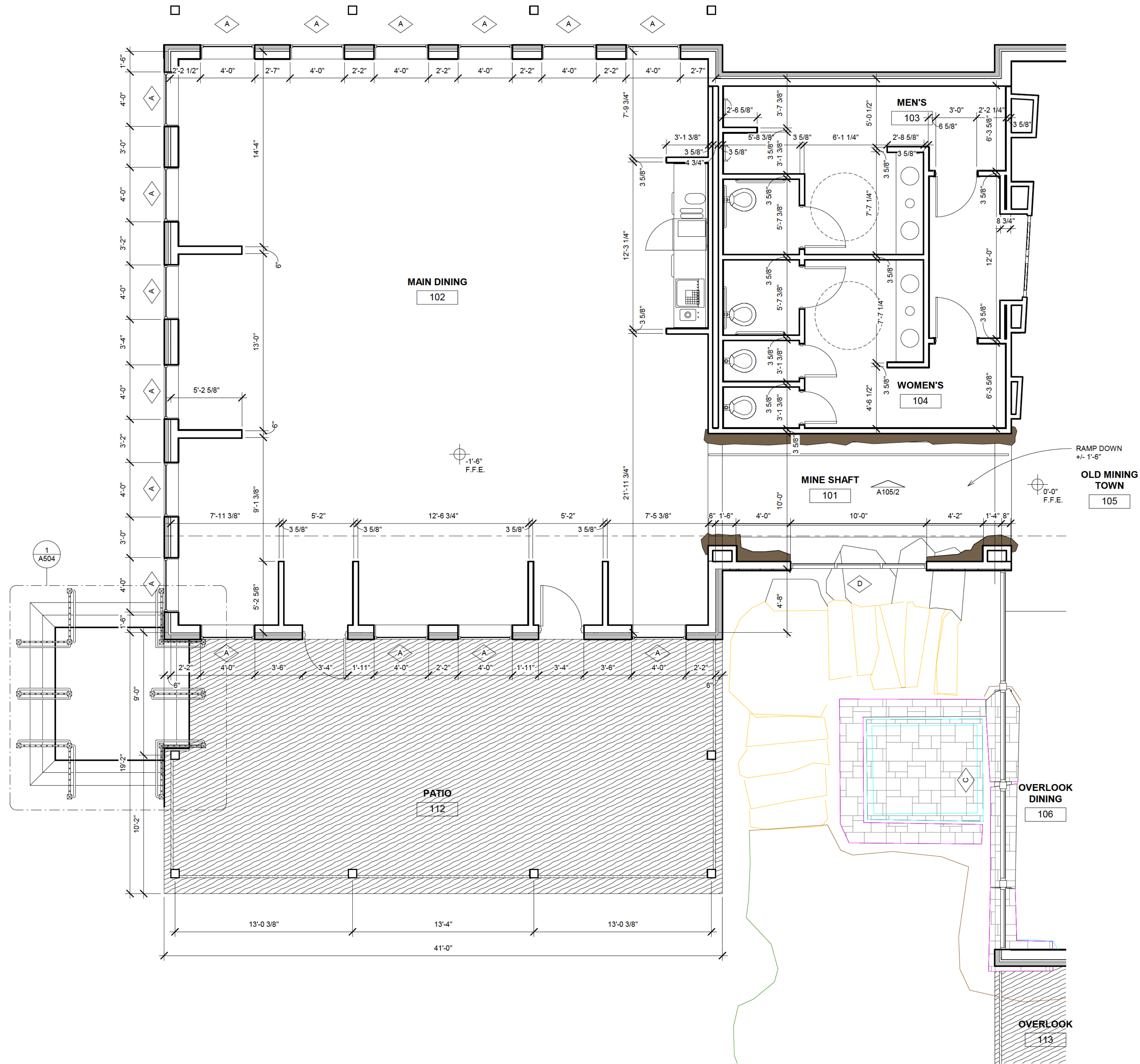
REVISIONS

No.	Description	Date

SEAL
 STATE OF OKLAHOMA
 MARK D. GANDY
 3254
 LICENSED PROFESSIONAL ENGINEER
 12-20-20

SHEET NAME
 OVERALL SITE PLAN

SHEET NUMBER
 AS101



1 FLOOR PLAN AREA B
1/4" = 1'-0"

REVISIONS

No.	Description	Date

