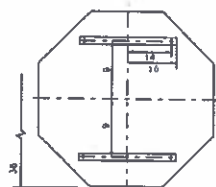
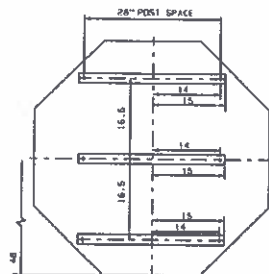


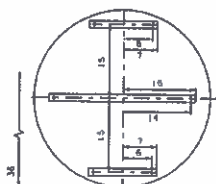
B-30(O)
1/2" SQUARE TUBE POST
1/2" PIPE POST



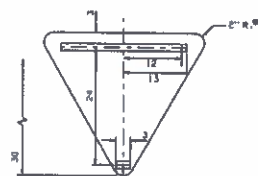
B-36(O)
1/2" SQUARE TUBE POST
1/2" PIPE POST



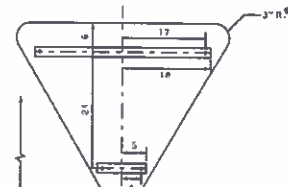
B-48(O)
1/2" SQUARE TUBE POSTS
1/2" PIPE POSTS



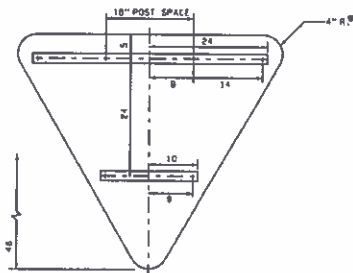
B-36(R)
1/2" SQUARE TUBE POST
1/2" PIPE POST



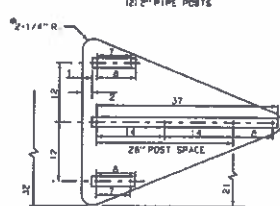
B-36(T)
1/2" SQUARE TUBE POST
1/2" PIPE POST



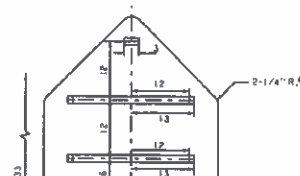
B-48(T)
1/2" SQUARE TUBE POSTS
1/2" PIPE POSTS



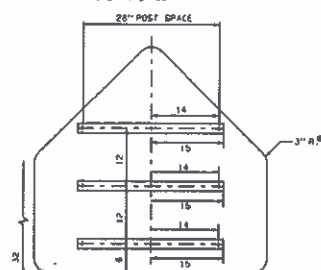
B-60(T)
1/2" SQUARE TUBE POSTS
1/2" PIPE POSTS



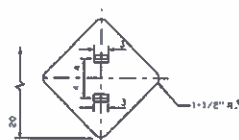
B-4836(T)
1/2" SQUARE TUBE POSTS
1/2" PIPE POSTS



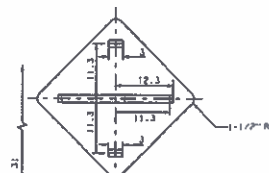
B-36(P)
1/2" SQUARE TUBE POST
1/2" PIPE POST



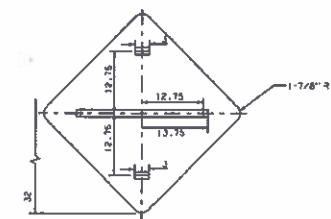
B-48(P)
1/2" SQUARE TUBE POSTS
1/2" PIPE POSTS



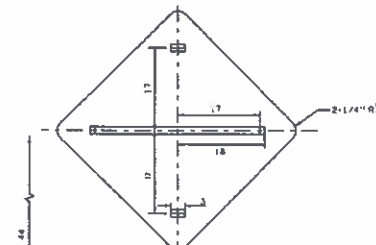
B-18(D)
1/2" SQUARE TUBE POST
1/2" PIPE POST



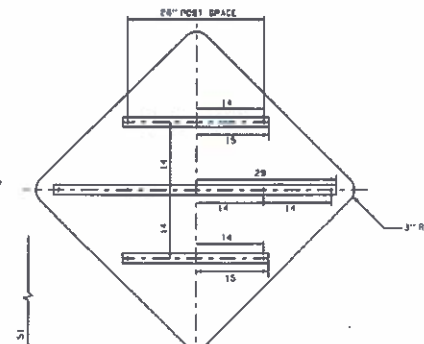
B-24(D)
1/2" SQUARE TUBE POST
1/2" PIPE POST



B-30(D)
1/2" SQUARE TUBE POST
1/2" PIPE POST



B-36(D)
1/2" SQUARE TUBE POST
1/2" PIPE POST



B-48(D)
1/2" SQUARE TUBE POSTS
1/2" PIPE POSTS

CONSTRUCTION NOTES:

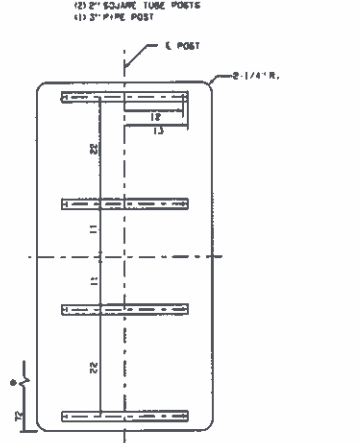
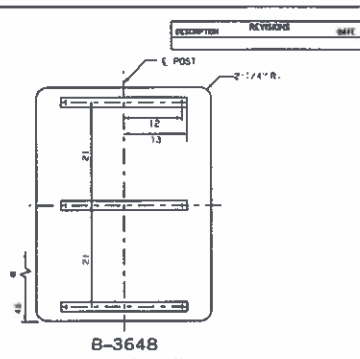
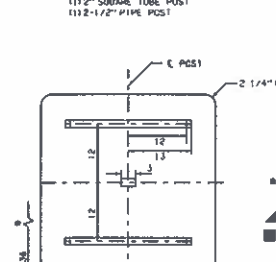
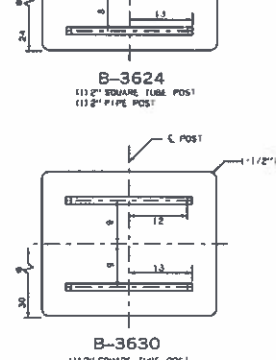
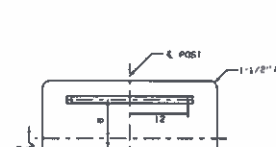
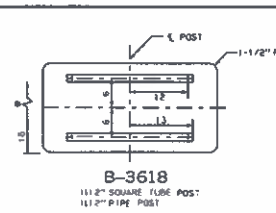
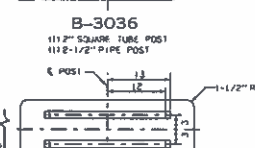
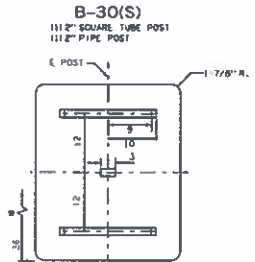
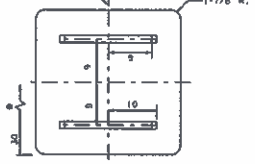
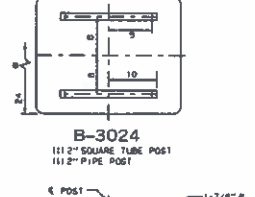
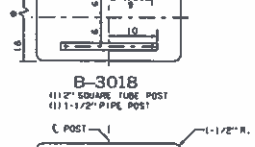
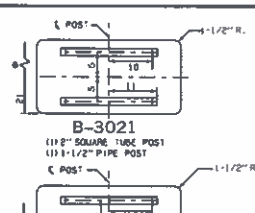
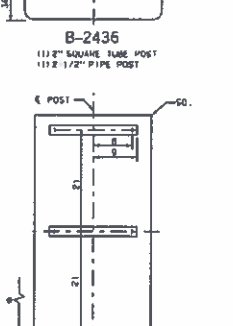
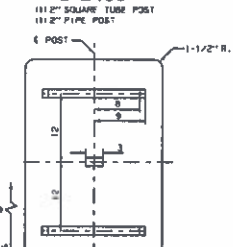
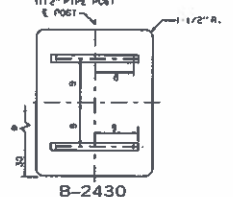
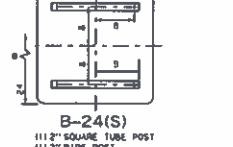
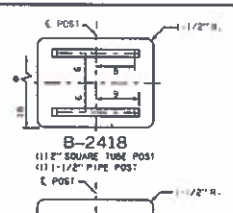
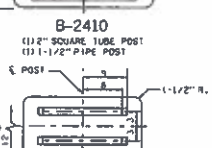
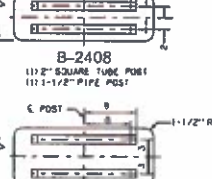
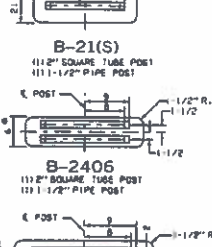
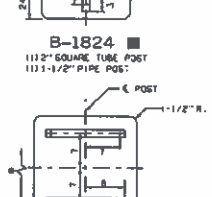
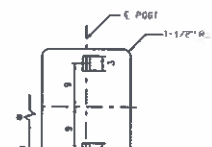
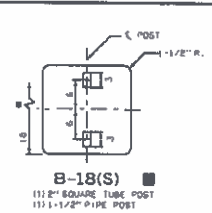
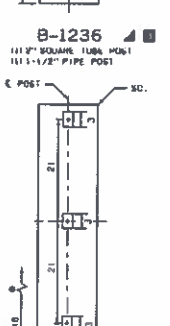
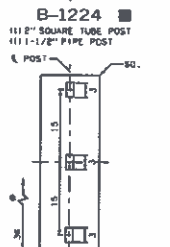
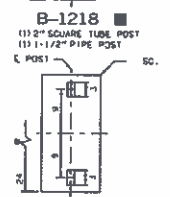
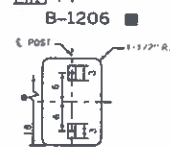
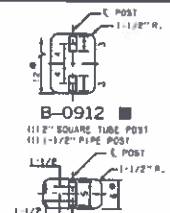
- (1) ALL FLAT SHEET SIGNS SHALL USE GALVANIZED STEEL POSTS.
- (2) THICKNESS OF MATERIALS FOR FLAT SHEET SIGNS SHALL BE AS FOLLOWS, DETERMINED BY THE LONGEST DIMENSION OF THE SIGN UNLESS OTHERWISE SPECIFIED.

ALUMINUM ALLOY 6061-T6 OR 5052-H36	GALVANIZED STEEL
0.083" FOR SIGNS THROUGH 24"	16 GAUGE FOR SIGNS THROUGH 24"
0.080" FOR SIGNS 25" THROUGH 35"	14 GAUGE FOR SIGNS 25" THROUGH 35"
0.100" FOR SIGNS 36" AND LARGER	12 GAUGE FOR SIGNS 36" AND LARGER
- (3) SIGN BRACKETS SHALL BE GALVANIZED STEEL OR ALUMINUM. HOLES FOR MOUNTING BRACKETS TO SIGN SHALL BE 5/16" DIA. HOLES FOR MOUNTING SIGN AND BRACKETS TO POST SHALL BE 3/8" DIA. HOLES SHALL BE PUNCHED BEFORE GALVANIZING. SIZE OF BRACKETS SHALL BE AS FOLLOWS: SIGNS THROUGH 36" SHALL USE A GALVANIZED STEEL OR ALUMINUM CHANNEL 1-1/2" X 1/2" X 1/8". SIGNS LARGER THAN 36" SHALL USE A GALVANIZED STEEL OR ALUMINUM CHANNEL 2" X 1/2" X 1/8". ALUMINUM SIGN BRACKETS SHALL BE ALLOY 6061-T6, 6062-T6 OR 6063-T6.
- (4) ALL BOLTS, NUTS AND WASHERS SHALL BE GALVANIZED STEEL OR CADMIUM PLATED. ALL BOLT ENDS SHALL BE SUFFICIENTLY BRANDED AFTER INSTALLATION TO MINIMIZE REMOVAL BY VANDALISM.
- (5) ALL POSTS SHALL EXTEND 2" ABOVE THE TOP SIGN BRACKET, BUT NOT ABOVE THE TOP OF THE SIGN.
- (6) CORNER RADIUS FOR ALL FLAT SHEET SIGNS SHALL BE AS SHOWN.
- (7) ALL DIMENSIONS ARE IN INCHES UNLESS OTHERWISE SPECIFIED.



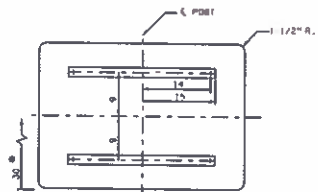
APPROVED BY: *Theresa M. Bate*
TRAFFIC ENGINEER
TRAFFIC STANDARD

SIGN BLANK AND BRACKET DETAILS

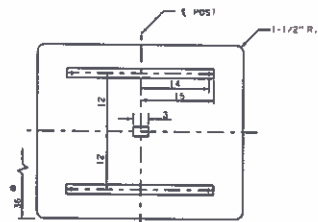


NOTES:
 ■ ALL POSTS SHALL EXTEND 2" ABOVE THE TOP SIGN BRACKET, BUT NOT ABOVE THE TOP OF THE SIGN.
 ■ SIGN BLANK THICKNESS SHALL BE .060" ALUMINUM OR 18 GAUGE STEEL.
 ■ VERTICAL SIGN BRACKET ONLY.
 ALL DIMENSIONS ARE IN INCHES UNLESS OTHERWISE SPECIFIED.

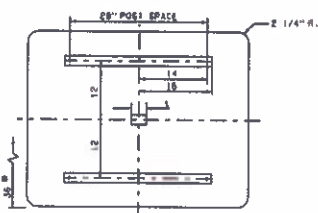
APPROVED BY
 TRAFFIC ENGINEER: *David A. Galt* DATE: *11/10*
 TRAFFIC STANDARD
 SIGN BLANK AND BRACKET DETAILS
 2009 SPECIFICATIONS
 S852-1 00
 T-131



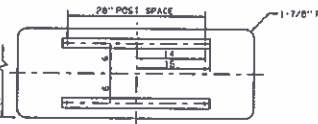
B-4230
 (1) 1 1/2" SQUARE TUBE POST
 (1) 1 1/2" PIPE POST



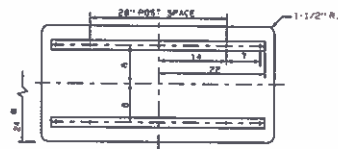
B-4236
 (1) 1 1/2" SQUARE TUBE POST
 (1) 1 1/2" PIPE POST



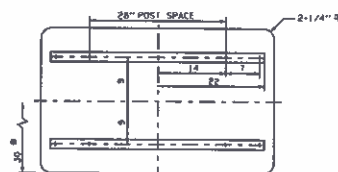
B-4536
 (2) 2" SQUARE TUBE POSTS
 (2) 2" PIPE POSTS



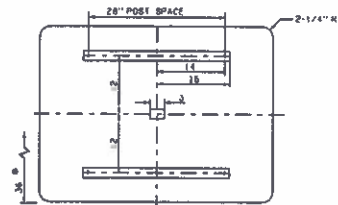
B-4818
 (2) 2" SQUARE TUBE POSTS
 (2) 2 1/2" PIPE POSTS



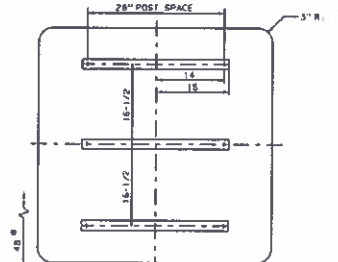
B-4824
 (2) 2" SQUARE TUBE POSTS
 (2) 2" PIPE POSTS



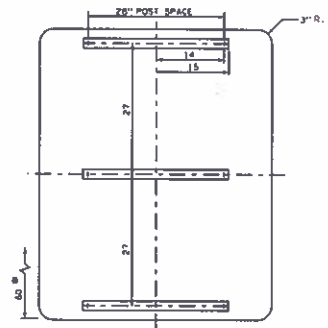
B-4830
 (2) 2" SQUARE TUBE POSTS
 (2) 2" PIPE POSTS



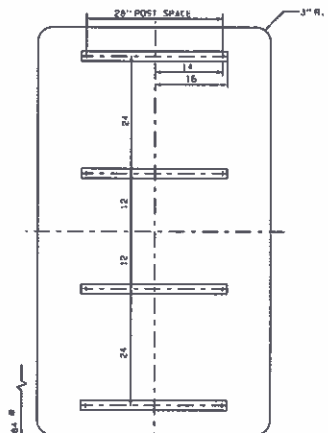
B-4836
 (2) 2" SQUARE TUBE POSTS
 (2) 2" PIPE POSTS



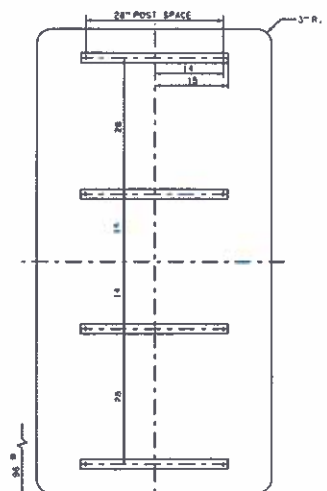
B-48(S)
 (2) 2" SQUARE TUBE POSTS
 (2) 2 1/2" PIPE POSTS



B-4860
 (2) 2 1/2" PIPE POSTS WITH SINGLE SIGN BLANK
 (2) 3 1/2" PIPE POSTS WHEN 2 SIGN BLANKS ARE USED IN A CLUSTER



B-4884
 (2) 3 1/2" PIPE POSTS

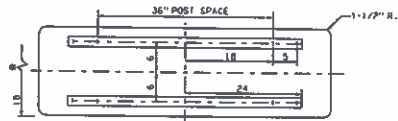


B-4896
 (2) 3" PIPE POSTS

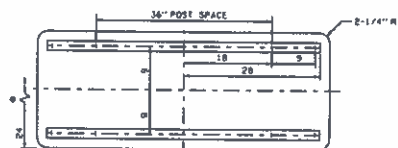
ALL POSTS SHALL EXTEND 2" ABOVE THE TOP SIGN BRACKET,
 BUT NOT ABOVE THE TOP OF THE SIGN.
 ALL DIMENSIONS ARE IN INCHES UNLESS OTHERWISE SPECIFIED.



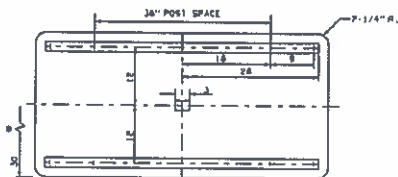
APPROVED BY *[Signature]* DATE *11/1/11*
 TRAFFIC STANDARD
 SIGN BLANK AND BRACKET DETAILS



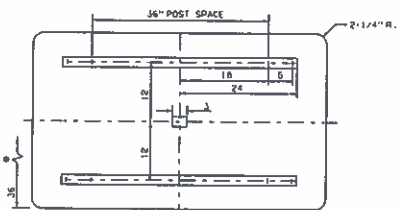
B-6018
 (2) 2" SQUARE TUBE POSTS
 (2) 1 1/2" PIPE POSTS



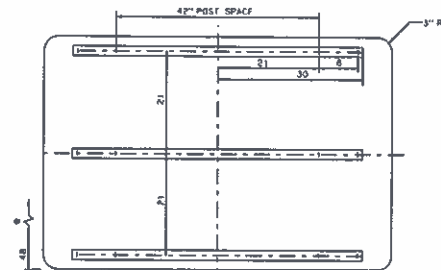
B-6024
 (2) 2" SQUARE TUBE POSTS
 (2) 2" PIPE POSTS



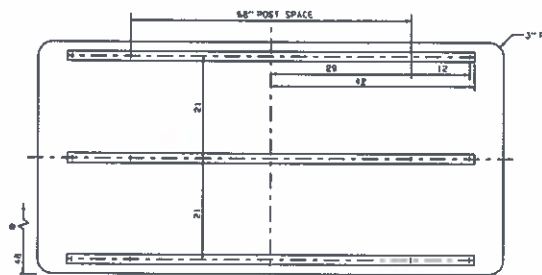
B-6030
 (2) 2" SQUARE TUBE POSTS
 (2) 2" PIPE POSTS



B-6036
 (2) 2" SQUARE TUBE POSTS
 (2) 2 1/2" PIPE POSTS



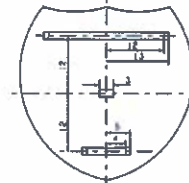
B-7248
 (2) 2" SQUARE TUBE POSTS
 (2) 2 1/2" PIPE POSTS



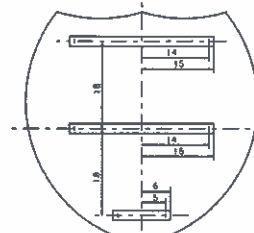
B-9648
 (2) 3" PIPE POSTS



B-24(M)



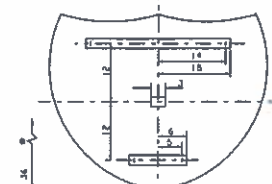
B-36(M)



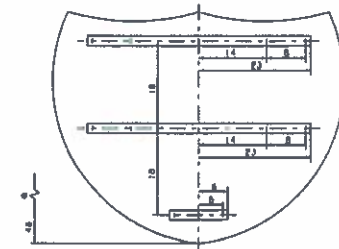
B-48(M)



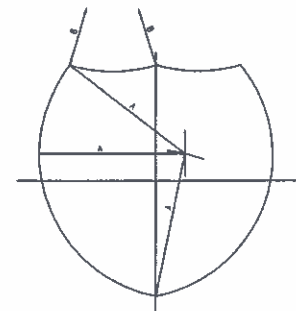
B-3024(M)



B-4536(M)



B-6048(M)



	A (1P)	B (2P)
24" x 24"	18	15
30" x 24"	17	24
36" x 36"	22-1/2	22-1/2
48" x 36"	25-1/2	36
48" x 48"	30	30
60" x 48"	34	48

NOTES:

BRACKET ARMS SHOWN ARE FOR SIGNS INDIVIDUALLY MOUNTED.

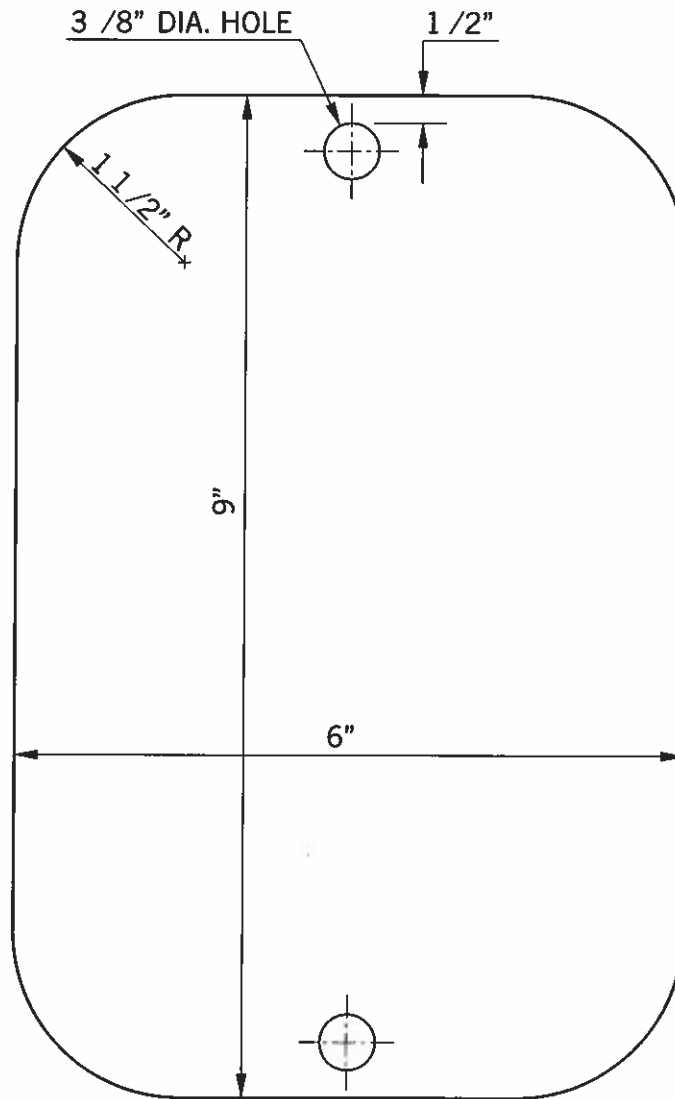
ALL POSTS SHALL EXTEND 2" ABOVE THE TOP SIGN BRACKET, BUT NOT ABOVE THE TOP OF SIGN.

ALL DIMENSIONS ARE IN INCHES UNLESS OTHERWISE SPECIFIED.



APPROVED BY: *[Signature]*
 TRAFFIC ENGINEER
 TRAFFIC STANDARD

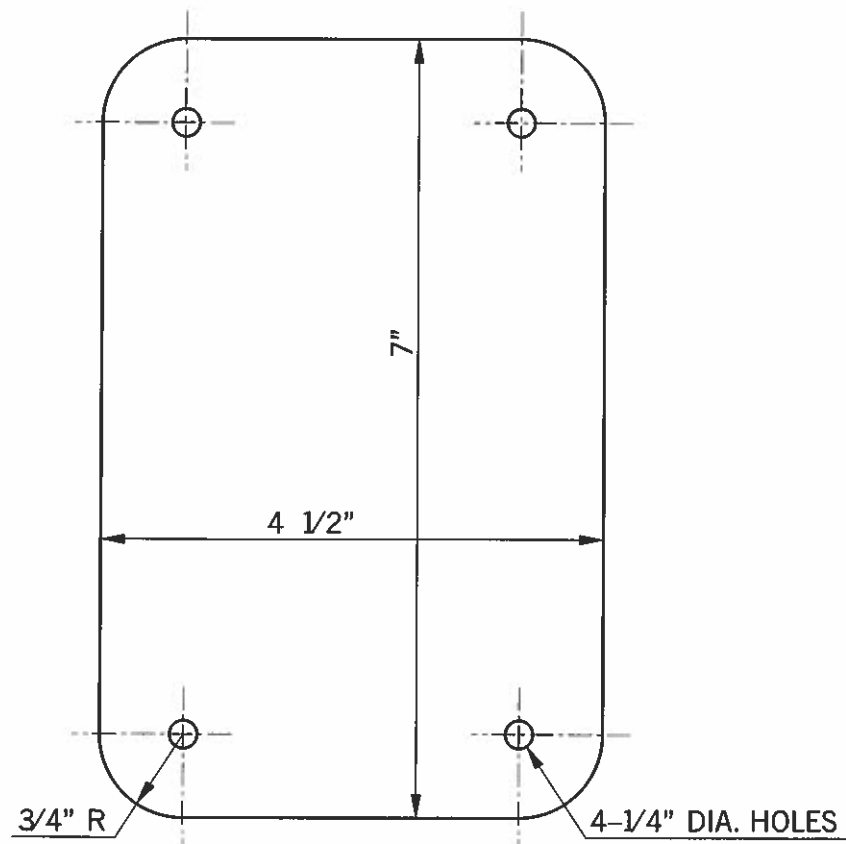
SIGN BLANK AND BRACKET DETAILS



DETAIL A

COMMODITY CODE: 0570-05-67-CB

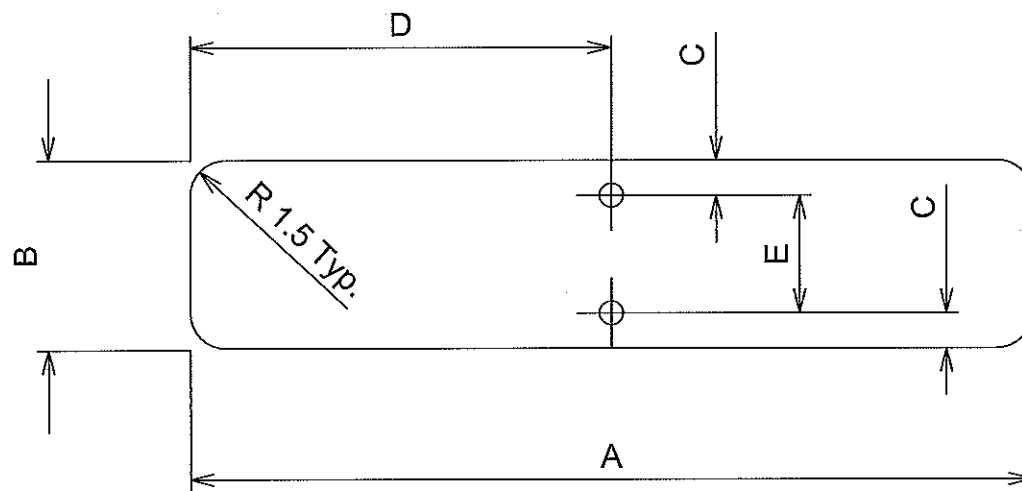
W	L	RADIUS	THICKNESS	SHAPE	HOLE
6" x	9"	1 1/2"	.063	HORZ RECT.	1/2" FROM TOP CENTER HOLE



DETAIL B

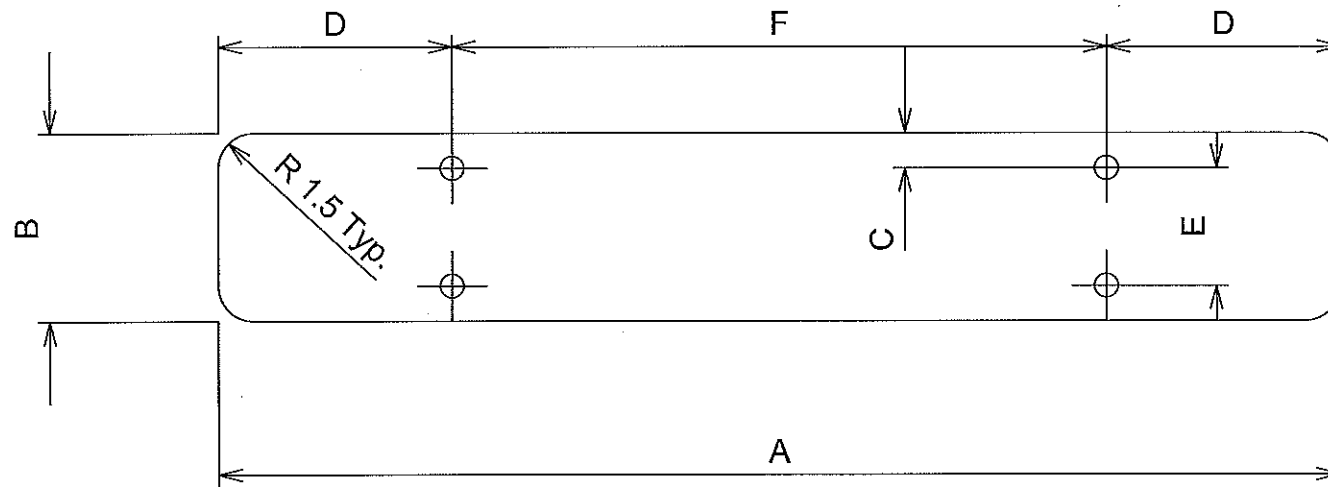
COMMODITY CODE: 0570-05-67-BX

W	L	RADIUS	THICKNESS	SHAPE	HOLE
4 1/2" x	7"	3/4"	.063	RECT.	1/4"



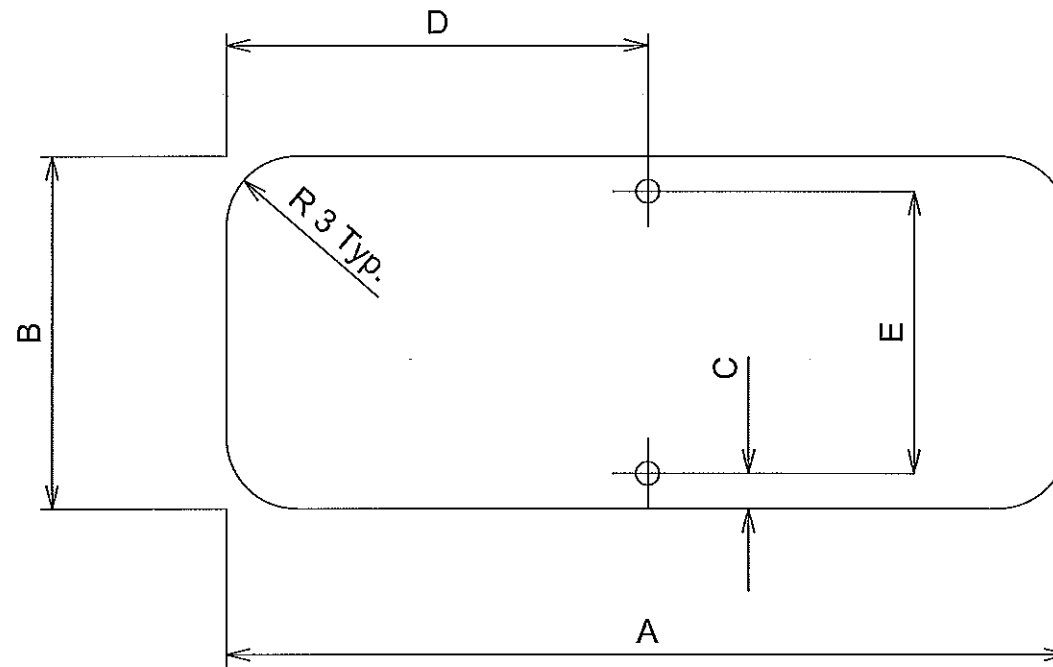
A	B	C	D	E
36	8	1.5	18	5

DETAIL C



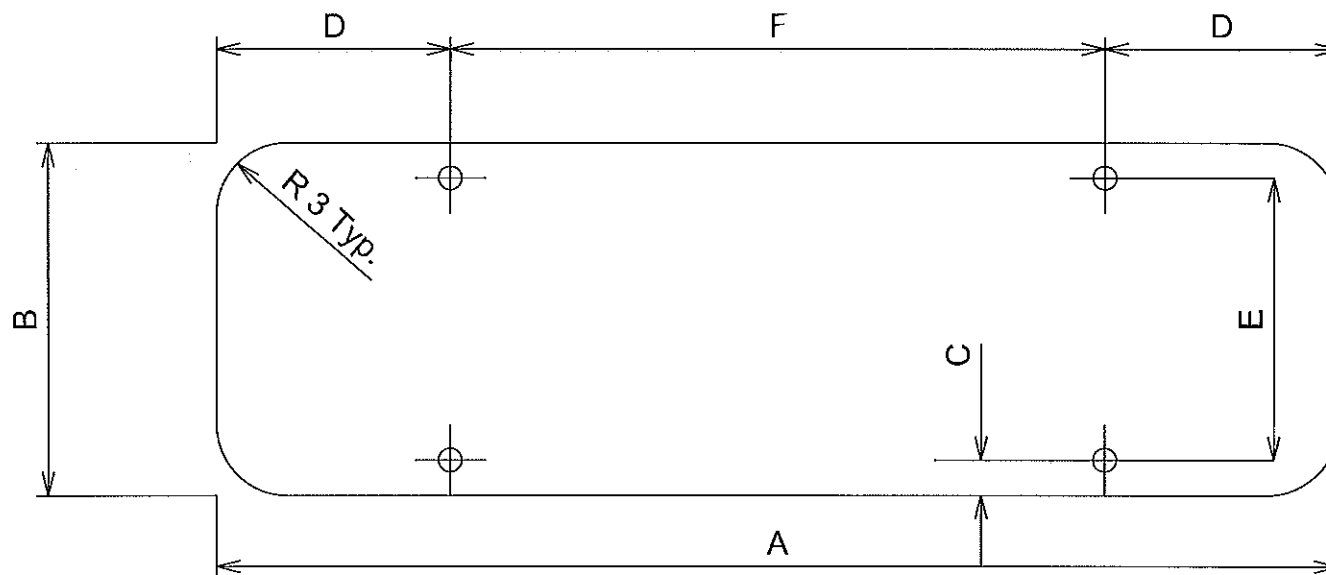
A	B	C	D	E	F
48	8	1.5	10	5	28

DETAIL D



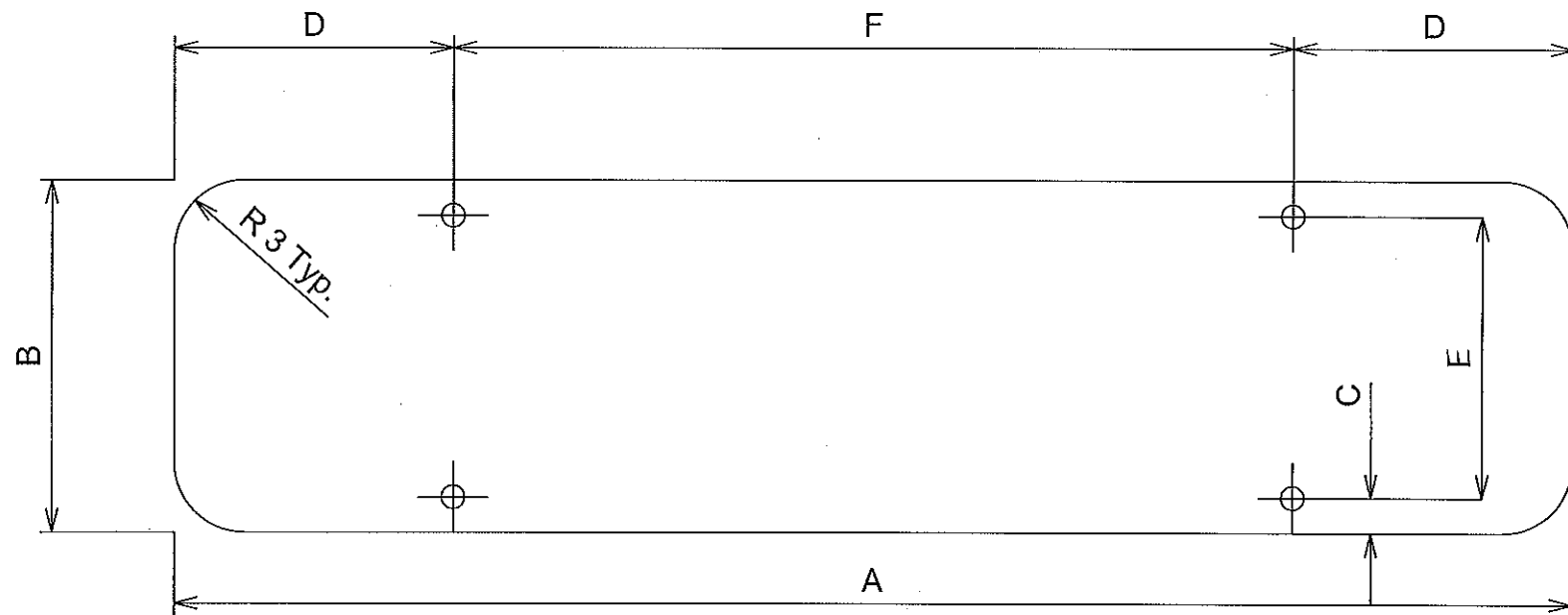
A	B	C	D	E
36	15	7.5	18	12

DETAIL E



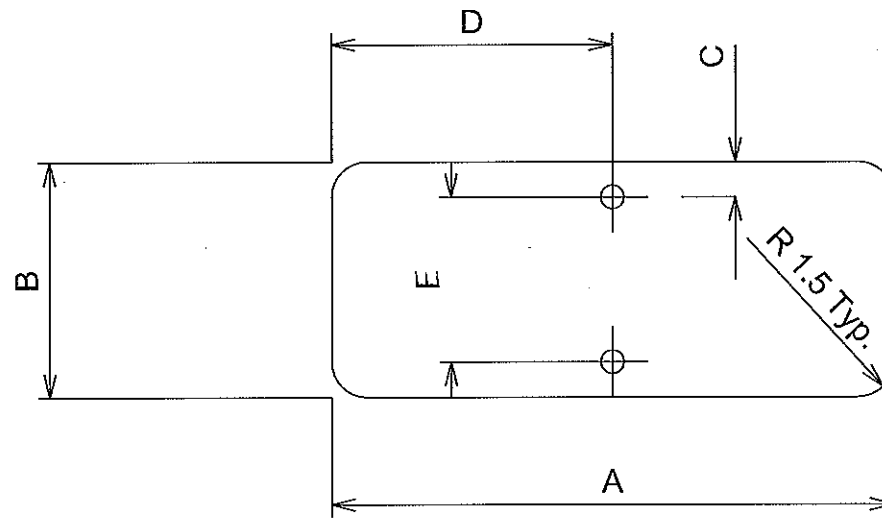
A	B	C	D	E	F
48	8	1.5	10	12	28

DETAIL F



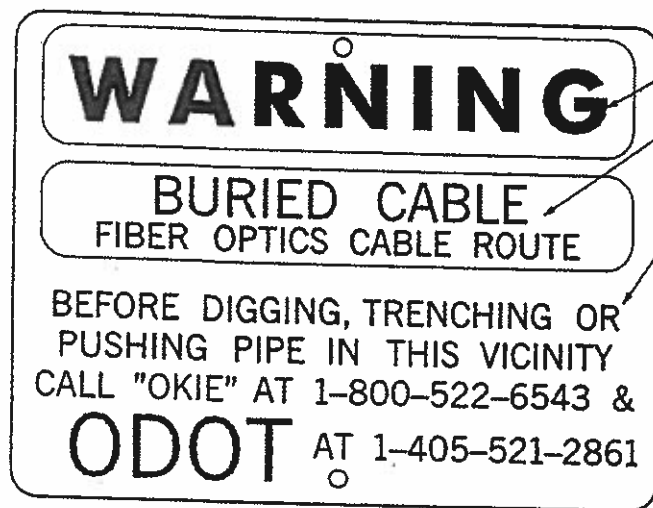
A	B	C	D	E	F
60	8	1.5	12	12	36

DETAIL G



A	B	C	D	E
24	10	1.5	12	7

DETAIL H

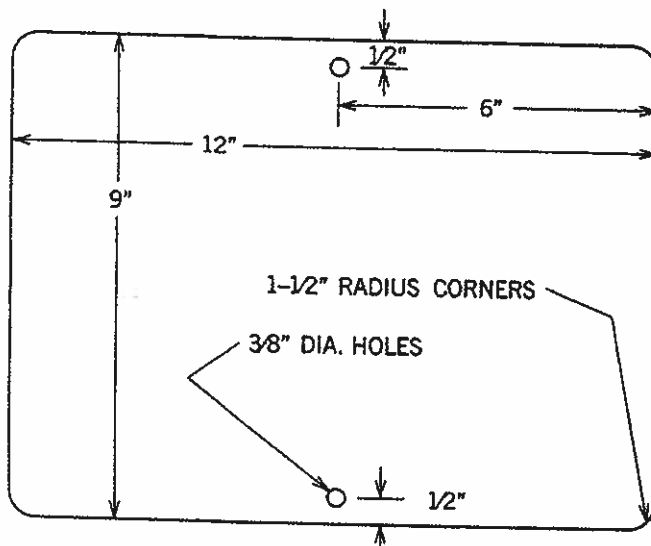


LETTERS CUT OUT OF BLACK PATCH

BLACK LETTERS ON WHITE PATCH

BLACK LETTERS ON ORANGE BACKGROUND

FIBER OPTIC ROUTE MARKER
BLACK LETTERING ON AN ORANGE SIGN FACE



SIGN BLANK - B 1209
(ALUMINUM ALLOY 6061-T6 OR APPROVED EQUAL)
(0.063" THICKNESS)

SIZE:

9" x 12"

RADIUS:

1 1/2"

THICKNESS:

0.063

SHAPE:

RECT.

HOLE:

STANDARD

COMMODITY CODE:

0570-05-67-CH