





smiths
detection

Security Checkpoint Solutions

MAIL, BAGGAGE & PARCEL



HI-SCAN 6040-2is

Advanced dual view X-Ray inspection system for automatic explosives and liquids detection

- Dimensions
 - 92.0" (L) x 51.7" (W) x 54.0" (H)
- Max. object size
 - 24.2" (W) x 16.1" (H)
- Weight
 - Approx. 1808 lbs

smiths
detection



MAIL, BAGGAGE & PARCEL

HI-SCAN 6040-2is: Advanced dual view X-Ray inspection system for automatic explosives and liquids detection Tunnel dimensions: - 620 (W) x 420 (H) [mm] 24.4" (W) x 16.5" (H) Max. object size: - 615 (W) x 410 (H) [mm] 24.2" (W) x 16.1" (H) Dimensions • Weight: - 2340 (L) x 1314 (W) x 1372 (H) [mm] approx. 820 kg - 92.0" (L) x 51.7" (W) x 54.0" (H) approx. 1808 lbs Includes: - Two (2) 19" LCD monitor, Operator Keyboard & Manual - Standard 12-Month Warranty On-Site PRIORITY Extended Warranty: - 24/7/365 On-site service coverage, 24 hr response time - All labor, travel time and travel expenses - All replacement parts required - Unlimited access to 24/7 Technical Support	Each	\$ 60,813.00
Shipping (HI-SCAN 6040-2is, FOB Destination)	Each	\$ 1,300.00
Unit installation and Training, calibration and 2-Hrs. Operator Training by a Field Technician 2nd Operator Training six months after installation	Each	\$ 1,750.00
Hi-TIP - Threat Image Projection - Xport - Automatic Image Transmission	Each	\$ 2,000.00
Yearly PMI and radiation leak test, for years 1, 2, 3 & 4 - Operator refresher training, 12 months after installation (Included)	Each	\$ -
Roller Table, one (1) for entry and one (1) for exit	Each	\$ 1,350.00
HI-SCAN 6040-2is Warranty - Year 1 (Included)	Each	\$ -
HI-SCAN 6040-2is Extended warranty (additional 1 year)	Each	\$ 6,590.00
HI-SCAN 6040-2is Extended warranty (additional 2 years)	Each	\$ 12,700.00
HI-SCAN 6040-2is Extended warranty (additional 3 years)	Each	\$ 18,700.00
HI-SCAN 6040-2is Extended warranty (additional 4 years)	Each	\$ 24,240.00

FREIGHT & CARGO

HI-SCAN 145180-2is:

An X-ray scanner designed for the inspection of large-scale consolidated and palletized goods.

- Dimensions
 - 218.3" (L) x 85" (W) x 100.2" (H)
- Max. object size
 - 57.1" (W) x 70.9" (H)
- Weight
 - Approx. 6600 lbs



smiths
detection



FREIGHT & CARGO

HI-SCAN 145180-2is

An X-ray scanner designed for the inspection of large-scale consolidated and palletised goods.

Tunnel dimensions:

57.8" x 71.7"

Max. object size:

57.1" x 70.9"

Dimensions / weight:

218.3" (L) x 85" (W) 100.2" (H)

Approx. 6600 lbs

Includes:

- 19" LCD monitor, Operator Keyboard & Manual
- HI-TRAX Image Enhancement Functions
- Full Reverse Mode

12-Month On-Site Extended Warranty with Preventative Maintenance:

- On-site service coverage 8:30 am to 5:00 pm, Monday to Friday
- All labor, travel time and travel expenses
- All replacement parts required
- Unlimited access to 24/7 Technical Support

Heavy duty small pitch motorized - length 1334 mm, one (1) for entry and one (1) for exit

Shipping (HI-SCAN 145180-2is, FOB Destination)

Crating and Rigging

Unit Installation and Training, calibration and 2 Hrs. of Operators Training by Field Technician

2nd Operator Training six months after installation

Software

Yearly PMI and radiation leak test, for years 1, 2, 3 & 4 - Operator refresher training, 12 months after installation (Included)

Year 1 (included)

Year 2 (additional 1 year)

Year 3 (additional 2 years)

Year 4 (additional 3 years)

Year 5 (additional 4 years)

Lift Table, approx. dimensions: 60" x 120" x 16 - Capacity 11,000 lbs

Installation of Lift Tables at time of Unit Installation

Each

\$ 164,671.00

Each

\$ 13,235.29

Each

\$ 10,000.00

Each

\$ 5,294.12

Each

\$ 5,058.82

Each

\$ 2,000.00

Each

\$ -

Each

\$ -

Each

\$ 18,353.49

Each

\$ 35,238.80

Each

\$ 51,756.51

Each

\$ 67,476.14

Each

\$ 42,109.20

Each

\$ 1,200.00

NARCOTICS & EXPLOSIVES DETECTION



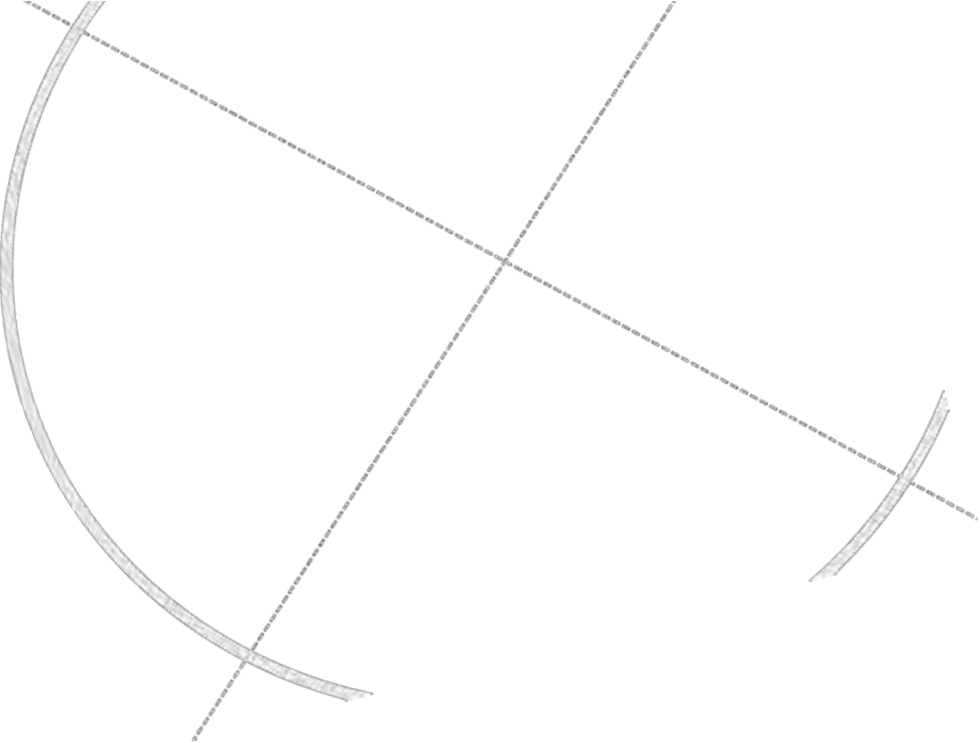
IONSCAN 600

- Detection and identification in less than 8 seconds
- Simultaneously detects and identifies explosives and narcotics
- Non-radioactive IMS source
- Small, lightweight and portable
- Single use, disposable sampling swabs
- Detects 9 Fentanyl analogs

smiths
detection

FREIGHT & CARGO

Ionscan 600 Explosives and Narcotics Trace Detector: The IONSCAN 600 is a highly sensitive trace detector, in a lightweight, portable desktop configuration. It can be used to accurately detect and identify a wide range of military, commercial and homemade explosives threats and common illegal/controlled narcotics, including the highly potent synthetic fentanyl opioids that are rapidly spreading across the world. The Ionscan 600 complements the 6040-2is systems by identifying and confirming the presence of any potential explosive detected by the X-Ray system before any alarm procedure is put into place	Each	\$ 38,710.00
---	------	--------------



Site Radiation Safety Training



Radiation Safety Plan, Testing, Training and Compliance:

- Provide basic radiation safety and compliance training
- Perform a site survey
- Provide/Update a Radiation Plan
- Prepare and facilitate submittal of required compliance filings, renewals, etc.
- Facilitate resolution of any Notice of Violation

smiths
detection

FREIGHT & CARGO

Site Radiation Safety Plan, Testing, Training and Compliance Including assistance with Notice of Violations: Radiation Safety Services: <ul style="list-style-type: none">- Provide basic radiation safety and compliance training for operators of CXS equipment per Location.- Perform a site survey and determine what is required to comply with the applicable State or other relevant authority of jurisdiction regulations.- Provide/Update a Radiation Plan- Prepare and facilitate submittal of required compliance filings, renewals, etc.- Facilitate resolution of any Notice of Violation issued by the applicable State or other relevant authority of jurisdictions and received by Customer relating to any of the CXS products.- Notify Customer's Radiation Safety Officer of any regulatory changes impact impacting compliant operation of the CXS products	Each	\$ 9,500.00
--	------	-------------



Metal Detectors

WALK-THROUGH METAL DETECTORS



PMD2 Plus

- Superior Detection and Throughput
- Very High Discrimination of Non-Threat Items
- Compliant with the strictest Security Standards for weapons detection
- 60 localization zones: 20 vertical, 3 lateral
- Column and Panel versions
- Unmatched Reliability
- Rapid Installation



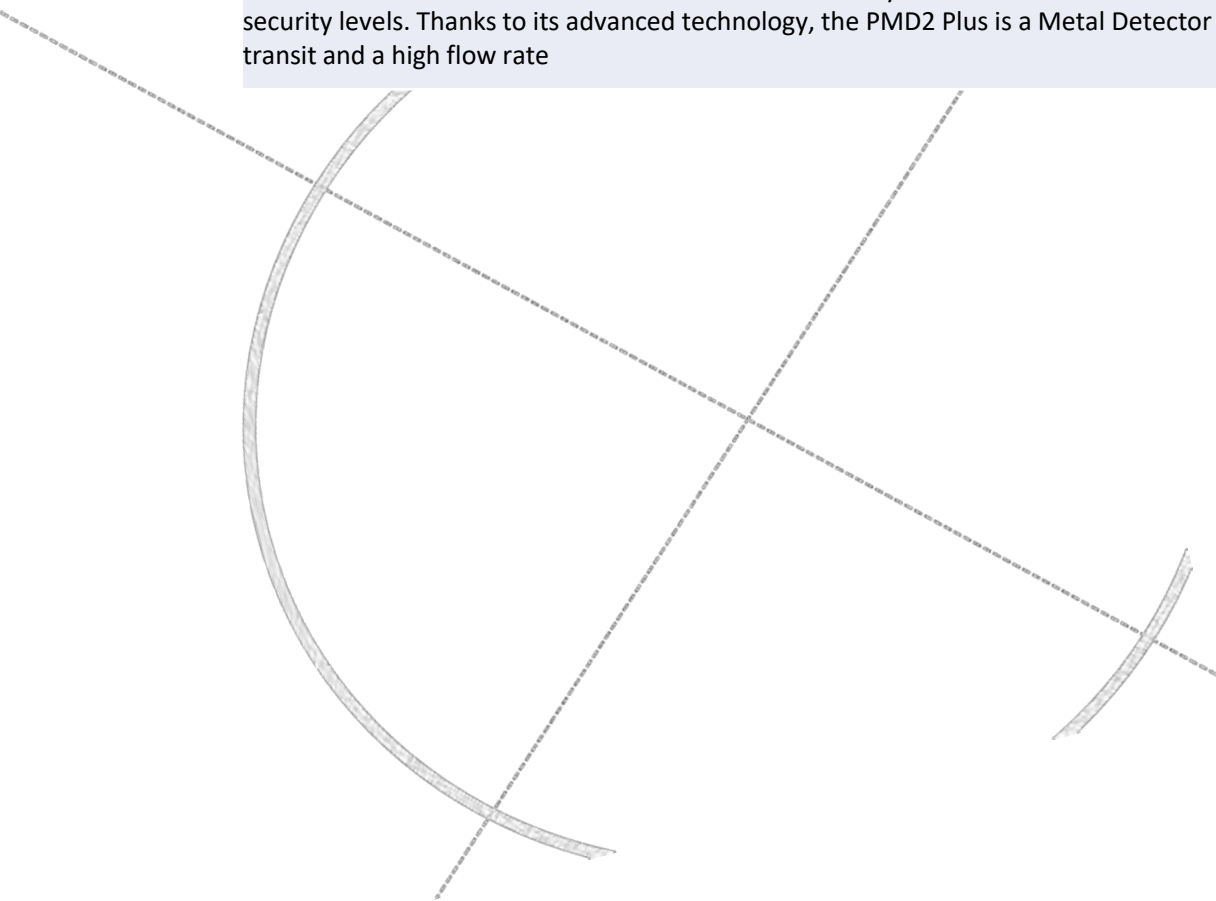
WALK-THROUGH METAL DETECTORS

PMD2 Plus Walk Through Metal Detector:

The PMD2 Plus is a zonal Metal Detector characterized by excellent discrimination towards metal personal effects, even when set to high security levels. Thanks to its advanced technology, the PMD2 Plus is a Metal Detector which allows accurate pinpointing of weapons in transit and a high flow rate

Each

\$ 6,530.00



HAND HELD METAL DETECTORS



PD240

- NIJ Standard - 0602.02 Compliant
- Wide Search Area for Faster and Accurate Screening Operations
- Elegant, Robust and Ergonomic
- High Immunity to Floor Rebars allows Lower-Body Screening without Sensitivity Reduction
- Uniform Detection of Magnetic and Non-Magnetic Targets
- Full Digital Design: Consistent Performance and Calibration-Free Operations
- Detection of radioactive substances and materials (option)
- Indoor and Outdoor Operations



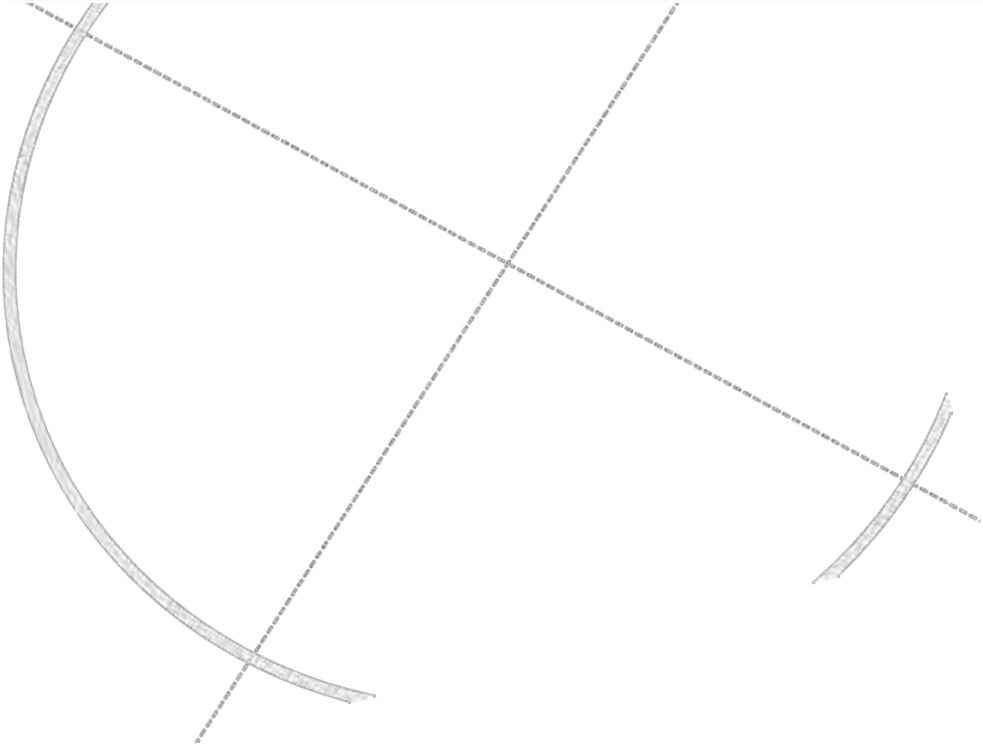
HAND HELD METAL DETECTORS

PD240 Hand Held Metal Detector:

The PD240 is a Hand Held Metal Detector that combines high reliability and ergonomics with advanced detection and operator signaling features. Effective sensitivity to all metals, full compliance with the latest Security Standards and high immunity to external metal masses are among the main peculiarities of this new device

Each

\$ 330.00





www.pemica.us



pedro@pemica.com
support@pemica.com



(469) 478-0271



(972) 996 4616



Who we are

We are a company with more than 30 years of experience in the **design, integration and execution of high value solutions** in the areas of security, infrastructure, supply and services.

Our recognition, product of our commitment with our customers, has taken us to participate in outstanding projects both private and public, printing in all of them our distinctive quality seal:

Pemica's Added Value



Where to find us



Our Products

SMITHS DETECTION:

- Conventional X-Ray Systems (CXS)
- Explosives / Narcotics Detection
- People Screening

smiths
detection

CEIA:

- Walk-Through Metal Detectors
- Hand Held Metal Detectors



smiths
detection

Security Checkpoint Solutions

MAIL, BAGGAGE & PARCEL



HI-SCAN 5030si

- Dimensions
 - 47.3 (L) x 27.7 (W) x 28.6 (H) [in]
- Max. object size
 - 20.9 (W) x 12.6 (H) [in]
- Weight
 - Approx. 352lbs

smiths
detection

MAIL, BAGGAGE & PARCEL



HI-SCAN 6040i

- Dimensions
 - 78.9 (L) x 33.5 (W) x 50.6" (H) [in]
- Max. object size
 - 24.2" (W) x 16.1" (H) [in]
- Weight
 - Approx. 881.9lbs

smiths
detection

MAIL, BAGGAGE & PARCEL



HI-SCAN 6040C

- Dimensions
 - 78.9 (L) x 33.5 (W) x 54.9 (H) [in]
- Max. object size
 - 24.2 (W) x 16.1 (H) [in]
- Weight
 - Approx. 1014 lbs

smiths
detection

MAIL, BAGGAGE & PARCEL



HI-SCAN 6040-2is

- Dimensions
 - 92.0 (L) x 51.7 (W) x 54.0 (H) [in]
- Max. object size
 - 24.2 (W) x 16.1 (H) [in]
- Weight
 - Approx. 1808 lbs

smiths
detection

MAIL, BAGGAGE & PARCEL

HI-SCAN 7555i

- Dimensions
 - 83.5 (L) x 38.8 (W) x 56.8 (H) [in]
- Max. object size
 - 29.5 (W) x 21.7 (H) [in]
- Weight
 - Approx. 1279 lbs



smiths
detection

FREIGHT & CARGO



HI-SCAN 9075

- Dimensions
 - 119.2 (L) x 50.8 (W) x 72.4 (H) [in]
- Max. object size
 - 35.4 (W) x 29.9 (H) [in]
- Weight
 - Approx. 1974 lbs

smiths
detection

FREIGHT & CARGO



HI-SCAN 100100T

- Dimensions
 - 141.0 (L) x 48.6 (W) x 74.8 (H) [in]
- Max. object size
 - 39.4 (W) x 39.4 (H) [in]
- Weight
 - Approx. 2050 lbs

smiths
detection

FREIGHT & CARGO



HI-SCAN 100100V

- Dimensions
 - 141.1 (L) x 50.4 (W) x 76.4 (H) [in]
- Max. object size
 - 39.4 (W) x 39.4 (H) [in]
- Weight
 - Approx. 2050 lbs

smiths
detection

PEOPLE SCREENING



B-SCAN 16HR

- 16HR-LD 100
 - $<0.1 \mu\text{Sv}$ / scan - 2,500 scans/year
- 16HR-LD 250
 - $<0.25 \mu\text{Sv}$ / scan - 1000 scans/year
- 16HR-FB
 - $<2.0 \mu\text{Sv}$ / scan - ~125 scans/year
- 16HR-DV
 - $<4.5 \mu\text{Sv}$ / scan - ~55 scans/year

smiths
detection

NARCOTICS & EXPLOSIVES DETECTION



TARGET-ID

- Uses proven FTIR technology
- Lightweight and portable for hand-held operation
- Pre-loaded library of up to 2,500 substances (narcotics)
- Detects 19 Fentanyl analogs

NARCOTICS & EXPLOSIVES DETECTION



ACE-ID

- Uses proven RAMAN technology
- Lightweight and portable for hand-held operation
- Pre-loaded library of up to 600 substances (Explosives, narcotics and toxic chemicals)
- Detects 16 Fentanyl analogs

smiths
detection

NARCOTICS & EXPLOSIVES DETECTION



IONSCAN 600

- Detection and identification in less than 8 seconds
- Simultaneously detects and identifies explosives and narcotics
- Non-radioactive IMS source
- Small, lightweight and portable
- Single use, disposable sampling swabs
- Detects 9 Fentanyl analogs

smiths
detection



Security Checkpoint Solutions

WALK-THROUGH METAL DETECTORS



CLASSIC

- High Level of Detection Uniformity
- Leading Edge Technology
- Easy to Install and Use
- Suitable for Portable Applications
- No Maintenance Required



WALK-THROUGH METAL DETECTORS



HI-PE Plus

- Accurate Detection of all Metallic Threat Items
- High Discrimination and Throughput
- Exceptional Immunity to external interferences
- Compliant with and Certified to the Strictest Security Standards for weapons detection
- Unmatched Reliability
- Rapid Installation
- Panel Design



WALK-THROUGH METAL DETECTORS



PMD2 Plus

- Superior Detection and Throughput
- Very High Discrimination of Non-Threat Items
- Compliant with the strictest Security Standards for weapons detection
- 60 localization zones: 20 vertical, 3 lateral
- Column and Panel versions
- Unmatched Reliability
- Rapid Installation



WALK-THROUGH METAL DETECTORS



SMD 600 Plus

- Fully compliant with the NIJ-0601.02 Law Enforcement Standard
- Very high discrimination and high throughput for public screening
- Accurate Pinpointing of individual and multiple metal targets
- Exceptional Immunity to external interferences
- Unmatched Reliability
- Rapid Installation



WALK-THROUGH METAL DETECTORS



02PN20-LFA

- Detection target: high caliber assault weapons and other large mass casualties metallic threats
- Operational use: extremely high throughput with near-zero nuisance alarms, provides automatic screening of non-divested people along with their carry-on items
- Application fields: cinemas, theaters, stadiums, amusement parks, metro stations, train stations, airports



HAND HELD METAL DETECTORS



PD140E

- Fully Compliant with NIJ Standard - 0602.02
- Compact, Elegant, Robust and Ergonomic
- Uniform Detection of Magnetic and Non-Magnetic Targets
- Full Digital Design: Consistent Performance and Calibration-Free Operations
- Extended Continuous Operation Time
- Programmable Sensitivity
- Indoor and Outdoor



HAND HELD METAL DETECTORS



PD140N

- NIJ Standard - 0602.02 Compliant
- Compact, Elegant, Robust and Ergonomic
- Uniform Detection of Magnetic and Non-Magnetic Targets
- Full Digital Design: Consistent Performance and Calibration-Free Operations
- Extended Continuous Operation Time
- Advanced Configuration Capability
- Indoor and Outdoor Operations



HAND HELD METAL DETECTORS



PD240

- NIJ Standard - 0602.02 Compliant
- Wide Search Area for Faster and Accurate Screening Operations
- Elegant, Robust and Ergonomic
- High Immunity to Floor Rebars allows Lower-Body Screening without Sensitivity Reduction
- Uniform Detection of Magnetic and Non-Magnetic Targets
- Full Digital Design: Consistent Performance and Calibration-Free Operations
- Detection of radioactive substances and materials (option)
- Indoor and Outdoor Operations



HAND HELD METAL DETECTORS



PD240CB

- NIJ Standard - 0602.02 Compliant
- Wide Search Area for Faster and Accurate Screening Operations
- Elegant, Robust and Ergonomic
- High Immunity to Floor Rebars allows Lower-Body Screening without Sensitivity Reduction
- Uniform Detection of Magnetic and Non-Magnetic Targets
- Full Digital Design: Consistent Performance and Calibration-Free Operations
- Detection of radioactive substances and materials (option)
- Indoor and Outdoor Operations



CELL PHONE DETECTORS

MSD Magneto Static Detector

- Detection of all cell phones and other contraband concealed on the person or in body cavities (including keyfob cell phones) with or without batteries
- Multi-Zone targeting indication identifies location of contraband on the body
- Covert operation through use of Bluetooth headset (included)
- Fully weather proof for outdoor use (IP65 certified)
- 26 hours continuous use on embedded battery operation
- Unmatched detection in all environments without adjustment
- Extremely durable design
- No assembly required: 10 second set-up



MAIL SCREENING DEVICE

EMIS-MAIL



- Automatic inspection of parcels and letters up to 45 cm in width and 7.5 cm thickness
- Detection of detonators, batteries, trigger circuits and other metal components of parcel bombs
- No alarm on metal staples, paper-clips and metal binding spirals
- Confirmation of signal (OK/ALARM) for each package inspected
- Ergonomic, compact design
- Operates on the mains power supply and with NiMH rechargeable batteries (optional)
- Integrated battery charger
- No calibration or periodic maintenance required
- Optional embedded detector of radioactive materials





www.pemica.us



pedro@pemica.com
support@pemica.com



(469) 478-0271



(972) 996 4616

IONSCAN™ 600

EXPLOSIVES AND NARCOTICS TRACE DETECTOR



Feature Highlights

- Detects explosives and narcotics
- Small, lightweight and portable
- Fully operational on hot swappable batteries
- Easy-to-use interface requires minimum training
- Low cost of ownership including consumables

Meets ECAC/EU standard for passenger and cargo screening (explosives) and CAAC standard for aviation screening (explosives and narcotics)

The IONSCAN 600 is a highly sensitive trace detector, in a lightweight portable desktop configuration. Building on the highly successful IONSCAN family reputation, this latest-generation unit allows users to accurately detect and identify a wide range of military, commercial and homemade explosives threats and common illegal and controlled narcotics, including the highly synthetic fentanyl opioids that are rapidly spreading across the world.

The compact, lightweight IONSCAN 600 is easily portable; it includes hot-swappable batteries for full operation even when mains power is not available. The unit can be relocated whilst fully operational (without any downtime) enabling it to be used in a much broader range of screening environments.

It features a proprietary non-radioactive ion mobility spectrometry (IMS) source, which

means licensing from national nuclear regulatory agencies is not required. This allows the detector to be used without time-consuming radiation testing and administration, and enables easy license-free transport from location to location.

The IONSCAN 600 is unique in working with cost-effective, single-use swabs suitable for both manual and wand sampling. These proprietary swabs are designed for efficient trace particle pick-up, reduce contamination risk and offer the most hygienic method for sampling a person's hands.

The IONSCAN 600 improves screening capabilities by delivering ease-of-use, flexibility and cost advantages for trace detection applications. It is augmented by ReachBack, first rate 24/7/365 service and support to ensure optimum product performance, and delivers reliable, trustworthy performance consistent with high quality Smiths Detection solutions.

Technical Data IONSCAN 600

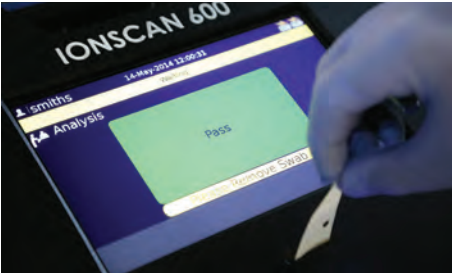
General Specifications

Detector type	Non-radioactive IMS source
Sampling	Trace particle sampling using cost-effective single-use swabs with either manual or wand collection
Calibration	Automatic internal self-calibration
Alarm method	Substance identification with configurable audio alarm
Consumables	Cost-effective single-use swabs and verification pen
Connectivity	Ethernet, 4 USB 2.0 (standard, 2 front/2 back)
Weight	Non-printer version: 23.8lbs (10.8kg); Integrated printer version: 25.3lbs (11.5kg)
Battery	1 hour full operation, hot swappable for extended operating time
Analysis time	8 seconds or less
Warm-up time	Less than 10 minutes
Data display	9" high resolution, anti-reflective, color touch screen
Dimensions (W x D x H)	Non-printer version: 14.8 x 12.0 x 12.9in (37.7 x 30.4 x 32.7cm) Integrated printer version: 15.1 x 15.6 x 14.8in (38.3 x 39.5 x 37.7cm)
Operating temperature	14 to 122°F (-10 to +50°C)
Operating altitude	Up to 13,780ft (4,200m)
Operating humidity	0 to 95% non-condensing
Explosives detection	Military, commercial and HMEs including RDX, TNT, PETN, NG, AN, UN, HMTD, TATP, EGDN, Tetryl, HMX, and others**
Narcotics detection (standard mode)	Amphetamine, Cocaine, Heroin, Ketamine, MDA, MDMA, Methamphetamine, Buprenorphine, THC and others**
Narcotics detection (fentanyl mode)	Fentanyl, Acetylfentanyl, 3-Methylfentanyl, Butyrfentanyl, Furanylfentanyl, Carfentanyl, W-18, Cocaine, Heroin and others
Storage capacity	50,000 samples
Printer	Integrated printer (option at time of order only) or external USB printer
Power	100-240V AC, 50-60Hz
Safety	No hazardous parts and tamper-proof casing

** Programmed threat substances depend on detector version and regulatory authority



Built-in Printer.



Detection and identification results in 8 seconds or less.



Lightweight and easily portable for dynamic security screening environments.
Carry handle available only on non-printer unit.

For product information, sales or service, please go to www.smithsdetection.com/locations

Smiths Detection, Century House, Maylands Avenue, Hemel Hempstead, Herts HP2 7DE
Modifications reserved. 95595158 02/28/17 © Smiths Detection
IONSCAN is a trademark of Smiths Detection



smiths detection

HI-SCAN™ 6040-2is

DUAL-VIEW X-RAY INSPECTION FOR HAND LUGGAGE

EU EDS Cabin Baggage Standard C1 approved



Feature Highlights

- Compact footprint and weighs less than 850 kg (1873 lbs)
- Steel penetration of 35 mm (1.38")
- Flexible design for easier installation through door widths of 900 mm (35.5")
- Dual-view technology
- Operator friendly interface
- Available in standard and high resolution

HI-SCAN 6040-2is HR:
Approved as LEDS according to
EU Standard 2 and 3 Type C

HI-SCAN 6040-2is HR:
Approved according to EU EDS
Cabin Baggage Standard C1

HI-SCAN 6040-2is is an advanced dual view X-ray inspection system for automatic explosives and liquids detection. It offers high throughput at security checkpoints, where bags and personal belongings are screened, utilising proven Heimann X-ray technology to assist with detection of dangerous and illegal objects, highlighted in excellent, high quality dual-view images.

With its modern, contemporary design the HI-SCAN 6040-2is provides increased flexibility, with its compact footprint and lower weight, less than 850 kg (1873 lbs). It can be used in areas that are restricted in space and will fit through doorways of 900 mm (35.5") for installation.

It offers further flexibility with different monitor options and an integrated lockable keyboard. Monitors can be placed on top of the X-ray unit or on a wheeled stand, to provide remote operation away from the machine.

HI-SCAN 6040-2is comes with outstanding steel penetration of 35 mm (1.38") and an operator friendly interface which makes it easy for the user to identify illegal objects and explosives that pose a threat to society.

Available in standard and also in high resolution, for better wire detectability (AWG 40) in order to comply with EU Standard 3 Type C (LEDS).

The HI-SCAN 6040-2is is suitable for airports, government buildings, hotels and other critical infrastructure applications where reliable security solutions are required.

General Specifications

Tunnel dimensions	620 (W) x 420 (H) [mm] • 24.4" (W) x 16.5" (H)
Max. object size	615 (W) x 410 (H) [mm] • 24.2" (W) x 16.1" (H)
Conveyor height ¹⁾	approx. 800 mm (31.4")
Conveyor speed with 50 Hz / 60 Hz	standard: 0.2/0.24 [m/s]
mains frequency	
Max. conveyor load even distributed over the whole conveyor ⁴⁾	160 kg (352 lbs)
Resolution (wire detectability) ²⁾	standard resolution (SR): standard: 39 AWG • typical: 40 AWG high resolution (HR): standard: 40 AWG • typical: 41 AWG
Penetration (steel) ²⁾	standard: 35 mm • typical: 37 mm
External dose rate	<1 µSv/h (0,1 mrem)
Film safety	guaranteed up to ISO 1600 (33 DIN) with a maximum of 5 inspections
Operating cycle	100 %, no warm-up procedure required

X-ray Generator

X-ray generators	2
Anode voltage • cooling	160 kV cp • hermetically sealed oil bath
Beam direction	horizontal and vertical

Image Generating System

X-ray converter	dual-view detector system with large-scale integrated, monolithic amplifier
Grey levels stored	4096
Image presentation	B/W, color, HI-MAT ^{Plus}
Digital video memory	1280 x 1024 / 24 bit
Image evaluation functions	VARI-MAT, O ² , OS, HIGH, LOW, NEG, HI-SPOT, SEN, XPlore, Opti-Zoom, HDA, stepless, electronic Zoom: enlargement: up to 64 times
Monitor	Flat Panel LCD Monitor

Additional Features

Functions	fading-in of date/time, luggage counter, user id-number, luggage marking system (acoustic), display of operating mode, REVIEW-feature (to recall previously visible image areas), zoom overview, free programmable keys, USB 2.0 interface, stepless zoom, IMS (Image Store System - stores up to 100,000 images)
Options	HI-TIP, Xport

Installation Data

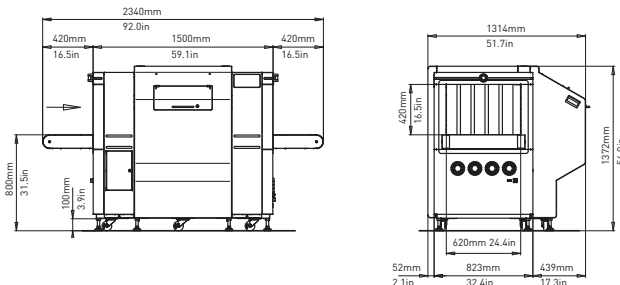
X-ray leakage	meets all applicable laws and regulations with respect to X-ray emitting devices
CE labelling/directives	in compliance with directives 2004/108/EC, 2006/42/EC, 2006/95/EC developed in accordance with standards IEC, UN, UL, CSA
Sound pressure	< 65 dB(A)
Operating-/storage temperature	0° - 40°C / -20°C - +60°C
Humidity	10% - 90% (not condensing)
Power supply	standard: 100, 120, 200, 230, 240 VAC +10% / -20% • 50 Hz - 60 Hz ± 3 Hz
Power consumption	max. 1.2 kVA
Protection class system/keyboard	IP 20 / IP 43
Dimensions • weight ³⁾	2340 (L) x 1314 (W) x 1372 (H) [mm] • approx. 820 kg
Mechanical construction	steel construction with steel panels, mounted on roller castors standard color(s): silver matt / B11-W1 (blue)

¹⁾ approx. values (adjustable)

²⁾ proprietary quality management test piece: steel step wedge, CU wires, belt speed 0.2 m/s

³⁾ without control desk, keyboard, monitor(s) etc.

⁴⁾ measured at ambient temperature of 20°C and nominal voltage



For product information, sales or service, please go to www.smithsdetection.com/locations

Smiths Heimann GmbH, Im Herzen 4, 65205 Wiesbaden, Germany
Modifications reserved. 95594337 20/10/2017 © Smiths Detection Group Ltd. - In some cases, the figures contain options
HI-SCAN is a trademark of Smiths Detection Group Ltd.

smiths detection

HI-SCAN™ 145180-2is

HEIMANN X-RAY TECHNOLOGY



Feature Highlights

- Universal X-ray system for palletized items
- Dual view concept shortens inspection times
- Excellent image presentation through optimized beam geometry
- Rugged roller conveyor, capacity 1000 kg / m, i.e. up to 5000 kg when evenly distributed
- Meets TSA requirements for skid size 1,2m x 1,2m x 1,65m, (48" x 48" x 65")
- HI-MAT^{Plus} technology for advanced material discrimination
- Typical penetration: 37 mm of steel

HI-SCAN 145180-2is is a state-of-the-art X-ray inspection system for scanning objects up to a size of 145 cm x 180 cm (57" / 71") [W x H].

Due to the compact footprint and the large tunnel dimensions the imaging system is perfectly suited for the inspection of air cargo, freight and palletized goods.

The HS 145180-2is is equipped with two 160 kV generators in a 90° opposition thus providing a horizontal and a vertical view of the object (dual view). This particular screening method facilitates a reliable inspection of even tightly packed objects in only one process. The dual view concept shortens inspection times and increases the effectiveness of the screening procedure.

Its new, innovative user concept makes it as easy to handle as the single-view system.

Even with a second beam direction, this new system remains compact and highly space-saving.

The heavy duty roller conveyor (small pitch design) allows the screening of heavy objects; conveyor load up to 5000 kg (evenly distributed).

HI-SCAN 145180-2is is the security concept for handling air cargo, freight and palletized goods.

General Specifications

Tunnel dimensions	1470 (W) x 1820 (H) [mm] • 57.8" (W) x 71.7" (H)
Max. object size	1450 (W) x 1800 (H) [mm] • 57.1" (W) x 70.9" (H)
Conveyor height ¹⁾	approx. 570 mm (22.4")
Conveyor speed (adjustable with frequency converter)	typical 0.24 [m/s]
max. conveyor load even distributed over the whole conveyor	5000 kg (11,025 lbs) • 1000 kg/m (672 lbs/ft)
Resolution (wire detectability)	standard (view A): 36 AWG (0.13 mm) • typical (view A): 38 AWG (0.10 mm) standard (view B): 36 AWG (0.13 mm) • typical (view B): 38 AWG (0.10 mm)
Penetration (steel) ²⁾	standard (view A): 35 mm • typical (view A): 37 mm standard (view B): 35 mm • typical (view B): 37 mm
X-ray dose / inspection (typical)	3.0 µSv (0.3 mrem)
Film safety	guaranteed up to ISO 1600 (33 DIN)
Duty cycle	100 %, no warm-up procedure required

X-ray Generator

Anode voltage • cooling	160 kV cp operated • hermetically sealed oil bath
Beam direction	VA: diagonal from side • VB: diagonal from bottom to top

Image Generating System

X-ray converter	L-shaped detector line
Grey levels stored	4096
Image presentation	B/W, color
Digital video memory	1280 x 1024 / 24 bit
Image evaluation functions	VARI-MAT, O ² , OS, HIGH electronic zoom: stepless enlargement up to 64-times
Monitor	Flat Panel LCD Monitor

Additional Features

Functions	fading-in of date/time, luggage counter, user id-number, luggage marking system (acoustic), display of operating mode, REVIEW-feature (to recall previously visible image areas), zoom overview, free programmable keys, USB 2.0 interface, stepless zoom
Options	HI-TIP, HI-SPOT, SEN, XPlore, IMS (Image Store System - stores up to 100,000 images), Xport

Installation Data

X-ray leakage	meets all applicable laws and regulations with respect to X-ray emitting devices.
CE-labelling	in compliance with guidelines 2004/108/EC, 2006/42/EC, 2006/95/EC
Sound pressure level	< 70 dB(A)
Operating- / storage temperature	0° - 40°C / -20°C - +60°C
Humidity	10% - 90% (non-condensing)
Power supply ⁴⁾	standard: 230 VAC +10% / -15% • 50 Hz / 60 Hz ± 3 Hz
Power consumption	approx. 2.2 kVA (without options)
Protection class system/keyboard	IP 20/IP 43
Dimensions • Weight ⁵⁾	5545 (L) x 2160 (W) x 2545 (H) [mm] • approx. 3000 kg 218.3" (L) x 85" (W) x 100.2" (H) • approx. 6600 lbs
Mechanical construction	steel construction with steel panels, mounted on roller castors standard color(s): RAL 7016 (dark gray)

¹⁾ Conds.: steel step wedge, CU wires, conveyor speed 0.2 m/s

³⁾

⁴⁾ different values optional

⁵⁾ approx. without control desk, keyboard, monitor(s), control cabinet, etc.

⁶⁾



For product information, sales or service, please go to www.smithsdetection.com/locations

Smiths Heimann GmbH, Im Herzen 4, 65205 Wiesbaden, Germany
Modifications reserved. 95593709 20/10/2017 © Smiths Detection Group Ltd. - In some cases, the figures contain options
HI-SCAN is a trademark of Smiths Detection Group Ltd.

smiths detection

IONSCAN™ 600

EXPLOSIVES AND NARCOTICS TRACE DETECTOR



Feature Highlights

- Detects explosives and narcotics
- Small, lightweight and portable
- Fully operational on hot swappable batteries
- Easy-to-use interface requires minimum training
- Low cost of ownership including consumables

Meets ECAC/EU standard
for passenger and cargo screening
(explosives) and CAAC standard
for aviation screening (explosives
and narcotics)

The IONSCAN 600 is a highly sensitive trace detector, in a lightweight portable desktop configuration. Building on the highly successful IONSCAN family reputation, this latest-generation unit allows users to accurately detect and identify a wide range of military, commercial and homemade explosives threats and common illegal and controlled narcotics, including the highly synthetic fentanyl opioids that are rapidly spreading across the world.

The compact, lightweight IONSCAN 600 is easily portable; it includes hot-swappable batteries for full operation even when mains power is not available. The unit can be relocated whilst fully operational (without any downtime) enabling it to be used in a much broader range of screening environments.

It features a proprietary non-radioactive ion mobility spectrometry (IMS) source, which

means licensing from national nuclear regulatory agencies is not required. This allows the detector to be used without time-consuming radiation testing and administration, and enables easy license-free transport from location to location.

The IONSCAN 600 is unique in working with cost-effective, single-use swabs suitable for both manual and wand sampling. These proprietary swabs are designed for efficient trace particle pick-up, reduce contamination risk and offer the most hygienic method for sampling a person's hands.

The IONSCAN 600 improves screening capabilities by delivering ease-of-use, flexibility and cost advantages for trace detection applications. It is augmented by ReachBack, first rate 24/7/365 service and support to ensure optimum product performance, and delivers reliable, trustworthy performance consistent with high quality Smiths Detection solutions.

Technical Data IONSCAN 600

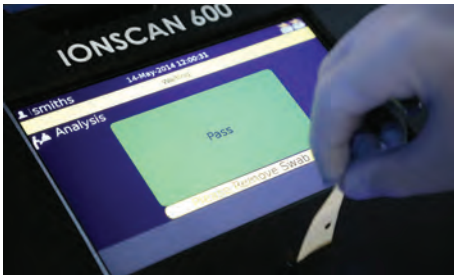
General Specifications

Detector type	Non-radioactive IMS source
Sampling	Trace particle sampling using cost-effective single-use swabs with either manual or wand collection
Calibration	Automatic internal self-calibration
Alarm method	Substance identification with configurable audio alarm
Consumables	Cost-effective single-use swabs and verification pen
Connectivity	Ethernet, 4 USB 2.0 (standard, 2 front/2 back)
Weight	Non-printer version: 23.8lbs (10.8kg); Integrated printer version: 25.3lbs (11.5kg)
Battery	1 hour full operation, hot swappable for extended operating time
Analysis time	8 seconds or less
Warm-up time	Less than 10 minutes
Data display	9" high resolution, anti-reflective, color touch screen
Dimensions (W x D x H)	Non-printer version: 14.8 x 12.0 x 12.9in (37.7 x 30.4 x 32.7cm) Integrated printer version: 15.1 x 15.6 x 14.8in (38.3 x 39.5 x 37.7cm)
Operating temperature	14 to 122°F (-10 to +50°C)
Operating altitude	Up to 13,780ft (4,200m)
Operating humidity	0 to 95% non-condensing
Explosives detection	Military, commercial and HMEs including RDX, TNT, PETN, NG, AN, UN, HMTD, TATP, EGDN, Tetryl, HMX, and others**
Narcotics detection (standard mode)	Amphetamine, Cocaine, Heroin, Ketamine, MDA, MDMA, Methamphetamine, Buprenorphine, THC and others**
Narcotics detection (fentanyl mode)	Fentanyl, Acetylfentanyl, 3-Methylfentanyl, Butyrfentanyl, Furanylfentanyl, Carfentanyl, W-18, Cocaine, Heroin and others
Storage capacity	50,000 samples
Printer	Integrated printer (option at time of order only) or external USB printer
Power	100-240V AC, 50-60Hz
Safety	No hazardous parts and tamper-proof casing

** Programmed threat substances depend on detector version and regulatory authority



Built-in Printer.



Detection and identification results in 8 seconds or less.



Lightweight and easily portable for dynamic security screening environments.
Carry handle available only on non-printer unit.

For product information, sales or service, please go to www.smithsdetection.com/locations

Smiths Detection, Century House, Maylands Avenue, Hemel Hempstead, Herts HP2 7DE
Modifications reserved. 95595158 02/28/17 © Smiths Detection
IONSCAN is a trademark of Smiths Detection



smiths detection

PD240

NEW GENERATION WIDE SEARCH AREA HAND HELD METAL DETECTION SET

FEATURES

- NIJ-0602.02 Standard Compliant
- Wide Search Area for Faster and Accurate Screening Operations
- Elegant, Robust and Ergonomic
- High Immunity to Floor Rebars allows Lower-Body Screening without Sensitivity Reduction
- Uniform Detection of Magnetic and Non-Magnetic Targets
- Full Digital Design: Consistent Performance and Calibration-Free Operations
- Indoor and Outdoor Operations



 **PD240 Hand Held
Detection Set with carry bag**



 **PD240 Hand Held
Detection Set**



 Contract Holder

www.ceia-usa.com

Threat Detection through Electromagnetics

CEIA USA, Ltd. All rights reserved. CEIA USA reserves the right to make changes, at any moment and without notice, to the models (including programming), their accessories and options, to the prices and conditions of sale

PD240 New Generation

Wide Search Area Hand Held Metal Detection Set

CEIA is proud to present the new PD240 Hand Held Metal Detector, a development of the well-established PD140 model. The PD240 combines high reliability and ergonomics with advanced detection and operator signaling features. Effective sensitivity to all metals, full compliance with the latest Security Standards and high immunity to external metal masses are among the main peculiarities of this new device.

Advantages & Benefits

- Programmable Sensitivity
- Extended Continuous Operation Time
- Automatic Low Power Mode during Screening Pauses
- Embedded Long Life Rechargeable Batteries are renewable energy and wipe out Operation Cost of Alkaline Batteries
- Embedded Fast and Reliable Battery Charger: no need of batteries removal
- Dedicated Holder acts as Minimum Space Table Stand and Mains connection for Battery Charge
- Operator Functions can be standard or customized by the user through PC GUI and USB connection



✓ ELEGANT, ROBUST AND ERGONOMIC

The PD240 features a special ergonomic design consisting of an offset hand grip which ensures that the operator's hand does not interfere with the sensitive detection area. **On the new model the sensitive area is 70% wider than before.**

This means fewer scans per person and therefore shorter inspection times per person. **Special care has gone into the mechanical design of the detector. Absence of sharp edges or corners allows the detector to be passed smoothly over the inspected area** without getting caught in buttons, buckles, folds or other parts of clothing.

✓ High Immunity to Floor Rebars

The PD240 incorporates innovative technical solutions which make it possible to operate much closer to floors with steel reinforcement bars than was previously possible with conventional hand-held detectors.

All this without any reduction in sensitivity.



✓ NIJ STANDARD 0602.02 COMPLIANT

The technical features of the detector comply with the NIJ standard 0602.02 and the new NIJ draft standard 0602.03. The PD240 has uniform sensitivity to magnetic and non-magnetic targets including those made of stainless steel. At the same time **the detector offers excellent body-effect compensation and has high immunity** to external disturbance from electromagnetic and mechanical sources.

✓ FULL DIGITAL DESIGN

The PD240 is **fully digital**. Electronic functions include a inspection field transmitter-receiver based on Digital Signal Processing [DSP] technology, a digital operator interface and external communications over the incorporated USB port. **This design combined with a special printed antenna ensures top reliability and very high repeatability.**

✓ ADVANCED CONTROL PANEL

The control panel with switches and warning lights is made from high-thickness silicon guaranteeing **high degree of protection** to make the PD240 suitable for indoor and outdoor use.

✓ ADVANCED ALARM INDICATION

The alarm signalling modes include: **optical alarm** which is fixed or is proportional to the intensity of the detection signal; **acoustic alarm** with a constant tone or a tone which is proportional to the size of the object detected; **vibration alarm signal**. It is also possible for the safety manager or the checkpoint supervisor to lock one or more operator commands.

✓ EXTENDED CONTINUOUS OPERATION TIME

The PD240 metal detector is powered by two AA-size NiMH batteries with a **battery life of over 100 hours**. A **Low Power Mode is automatically activated during pauses**, extending the battery life up to 200 hours. An internal circuit optimizes battery recharging which takes less than five hours.

✓ LATEST PLASTIC MATERIALS TECHNOLOGY

The metal detector casing is made from **next-generation technical polymers**. These plastics offer high chemical resistance and mechanical strength ensuring a long detector life even in heavy duty conditions.

Fully Programmable Signaling

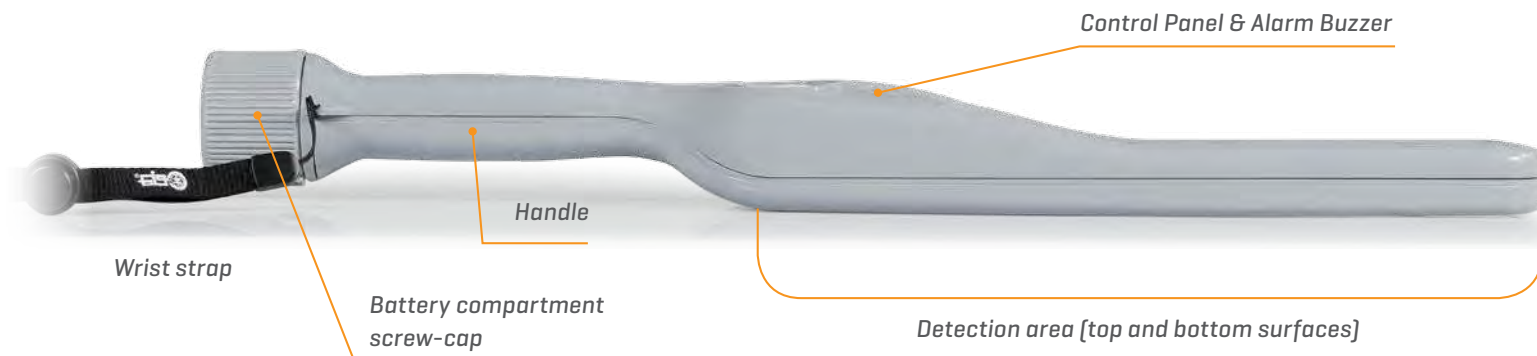
- Proportional/Fixed, High Loudness Acoustic Alarm
- Proportional/Fixed, High Brightness Optical Alarm
- Vibration Alarm for Discrete Screening



A	Power push button
B C	Alarm Mode selection
D E F	Sensitivity selection: • Low • Medium • High
G	Alarm indicator
H	Battery charge indicator



*Optical indication proportional to the metal signal strength
[Low, Medium, High]*



PD240 New Generation

Wide Search Area Hand Held Metal Detection Set

45+
years of
experience
AGL 12 01

✓ SOPHISTICATED COMMUNICATION CAPABILITIES

The digital design of the new metal detector also enables the **maximum flexibility in selecting how detection alarms are signalled**. Users can keep the factory settings or connect the detector over its USB to a PC and then personalize the settings with a dedicated graphic interface.



Main Menu



Audio Signaling Setting

Accessories

Carry Bag (part # 64081)



Belt Holster (part # 64614)



NIJ 0602.02 Test Pieces Kit (part # NIJ-HHMD-0602.02)

Includes 11 test objects for LO, MO, SO, VSO security levels.

Test pieces are manufactured according to NIJ 0602.02 specifications and electromagnetically certified.



HHMD Configuration tool (part # 63537)

Allows the connection of the Metal Detector to PC, via USB port.

Includes special USB adapter with cable, GUI application software, tool for battery cap removal.



Cigarette lighter cable for battery charger

(part # 64436)



PD240 New Generation

Wide Search Area Hand Held Metal Detection Set

HHDS-5: Five Hand Held Metal Detector docking station base

FEATURES

- Simultaneous charge of multiple HHMDs
- Single mains socket installation
- Minimum space requirement
- Monolithic, high mechanical stability

APPLICATIONS

- Public Events
- Stadiums and Sport Arenas
- Conventions
- Multiple lane screening



Equipment information

Power supply 100-240 VAC, 50-60Hz, 30W

Dimensions (WxH) 25" x 2.8"

Shipping information

Dimensions (WxDxH) 28" x 13.8" x 4.3"

Weight 7.3 lbs

Part List - description

- | | |
|---|--|
| 1 | Five Hand Held Metal Detector docking station base |
| 2 | Universal AC adapter |
| 3 | US, EU, UK, JP plugs adapter |
| 4 | Quick Reference Guide |

PD240 New Generation

Wide Search Area Hand Held Metal Detection Set

Specifications

POWER SUPPLY	2x AA size NiMH, rechargeable batteries
FULLY CUSTOMIZABLE CONTROL PANEL	Optical, acoustic and vibration alarm modes 3-level sensitivity selection buttons
DETECTION AND OPERATIONAL FUNCTIONS	Customizable via HHMD Configuration tool
BATTERY	Battery life 100 + hours continuous service (AA NiMH batteries 2500 mAh); up to 200 hours with automatic sleep mode Low battery indicator Built-in fast battery charger in combination with the HHDS Docking station
OPERATING TEMPERATURE	-40°F to 158°F
STORAGE TEMPERATURE	-40°F to 176°F
RELATIVE HUMIDITY	0 to 98% (without condensation)
DIMENSIONS (WxDxH)	PD240: 17" x 3.1" x 1.6" HHDS Docking station: 6.9" x 4.5" x 3.4" Carry Bag: 17" x 13.4" x 4.1"
WEIGHT	PD240 (with battery): 1.04 lbs HHDS Docking station for PD240 (with power adapter): 1.6 lbs Carry Bag: 2.9 lbs
COLOR	PD240: light grey RAL 7040 - Carry Bag: Green RAL 7013
MANUFACTURED IN GREY SHOCK-RESISTANT TECHNICAL POLYMERS	
COMPLIANCE	Conforms to the NIJ 0602.02 and the new NIJ 0602.03 Standards for metal detection Conforms to the international standards currently applicable for safety, EMC and to the applicable CE regulations

Ordering Information

PD240 part # PD240-SET

Shipping Information

Dimensions (WxDxH) 17.7" x 12.8" x 4.5"

Weight 4.85 lbs

Part List - description

1	PD240 Hand Held Metal Detector
2	HHDS Docking station
3	Coupling pins for side-by-side charger placement
4	NIJ compliant Calibration Test Piece
5	Universal AC adapter (100-240 Vac, 50-60Hz, 6W)
6	US, EU, UK, JP plugs adapter
7	Wrist strap
8	Instruction manual
9	Quick Reference Guide

Applications

- ☒ Airports
- ☒ Correctional Facilities
- ☒ Law Enforcement
- ☒ Government Buildings
- ☒ Nuclear Facilities
- ☒ Loss Prevention
- ☒ Public Events
- ☒ Schools Security

Part # PD240-Set 



CEIA USA Ltd - 9155 Dutton Drive, Twinsburg, OH 44087

Phone: [330] 405 3190 - Fax [330] 405 3196 - e-mail: security@ceia-usa.com

DP100K0006V5000US

www.ceia-usa.com

CEIA USA reserves the right to make changes, at any moment and without notice, to the models (including programming), their accessories and options, to the prices and conditions of sale

PMD2 Plus

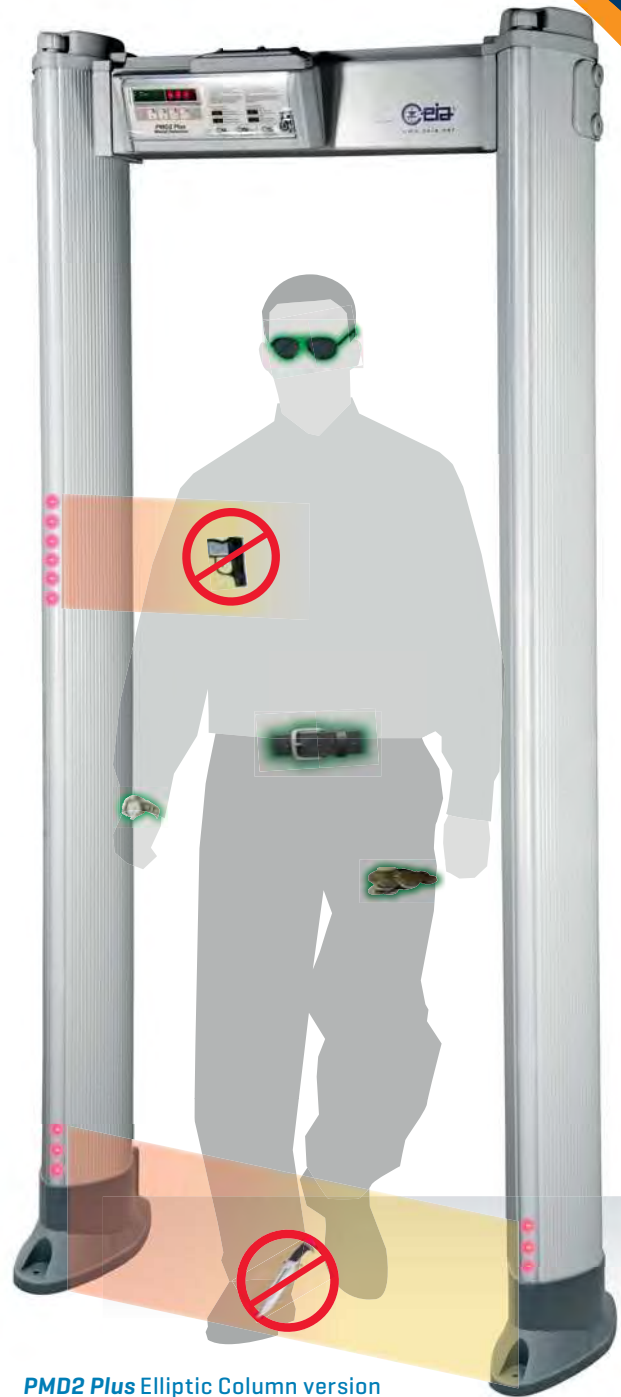
45+
years of
experience

ENHANCED WALK-THROUGH MULTI-ZONE METAL DETECTOR

- Superior Detection and Throughput
- Very High Discrimination of Non-Threat Items
- Compliant with the strictest Security Standards for weapons detection
- 60 localization zones – 20 vertical, 3 lateral
- Column and Panel versions
- Unmatched Reliability
- Rapid Installation



PMD2 Plus Panel version



PMD2 Plus Elliptic Column version



www.ceia-usa.com

Threat Detection through Electromagnetics

CEIA USA, Ltd. All rights reserved. CEIA USA reserves the right to make changes, at any moment and without notice, to the models (including programming), their accessories and options, to the prices and conditions of sale.

Strict requirements and detection needs call for security checkpoints to perform efficiently even under very challenging conditions. Choosing the right metal detector is essential.

Key considerations include identifying: the size and composition of the items to detect [**SECURITY LEVEL**], items and levels of personal effects to ignore [**DISCRIMINATION**], the number of people that will be passing through the checkpoint [**THROUGHPUT**]. These characteristics must be obtained even in environments with electrical and mechanical interferences, therefore the walk-through metal detector must present excellent immunity [**IMMUNITY**].

The **PMD2 Plus** Metal Detector satisfies all the requirements.

Detection Features



- Capability to detect the full range of metal weapon threats even within body cavities



- Met-Identity technology for Identification of Threat Composition

The most advanced Security Standards require detection of all ferrous and non-ferrous metal weapons and of those constructed in special non-magnetic alloys. The PMD2 Plus detects firearms and knives of this type, even when they are hidden within body cavities, and accurately indicates the position of the threat, its intensity and its prevalent composition. Inspection personnel thereby acquire thorough knowledge of the metal item and can act, according to procedures, with maximum effectiveness and security.



- 60 pinpointing zones with high resolution & precision:
 - 20 Vertical
 - 3 Lateral



✓ MET-IDENTITY TECHNOLOGY

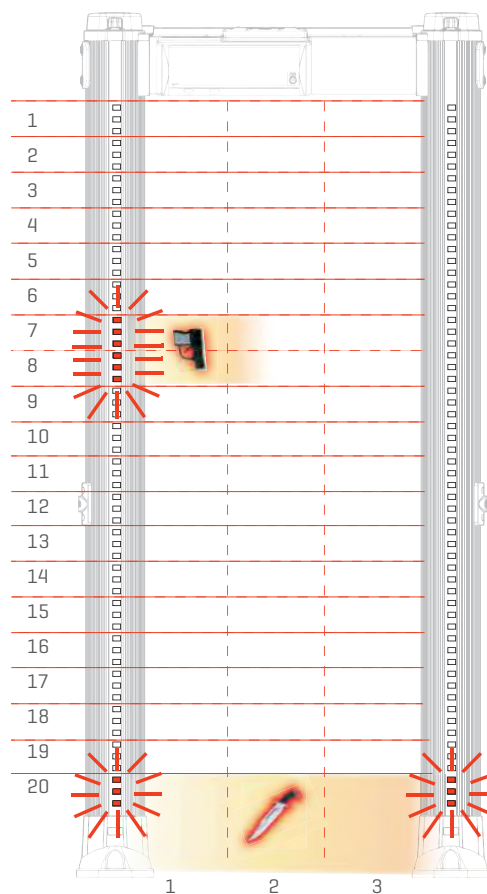
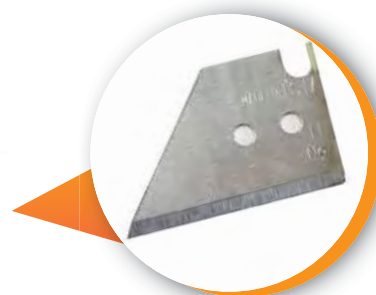
With Met-Identity technology, the PMD2 Plus allows you to know where, how much and what type of metal is being brought into the secure area.



➤ Ferrous Metal



➤ Non Ferrous Metal



✓ 60 LOCALIZATION ZONES

with left, center and right indication

Unique Alarm Signaling



- 4 Multi-Zone Display Bars, each programmable as entry Stop/Go and/or local alarm indication
- High visibility of the control unit and the zone indication independent from the operator position and the installation environment

Accurate signaling is essential for best operation and flow management. The PMD2 Plus provides the user with fully-programmable signaling. Both entry-points can indicate with a high level of accuracy, even simultaneously, the vertical and lateral areas of transit of the threats detected, and can also be configured as 'traffic lights' to control transits through the detector.



- Flexible Acoustic Alarm Signaling System:
 - ✓ 10 Continuous and Pulsed Tones
 - ✓ 34 Special Sounds

- 10 Acoustic Intensity Levels

A complete acoustic alarm system allows personalization of the alarm tones and intensities, with a wide choice of continuous, pulsed and special tones at different levels of intensity. The wide volume control dynamic allows operation even in very noisy environments.



- High Precision Transit Counter:
 - ✓ In-Bound Transits
 - ✓ Out-Bound Transits
 - ✓ Alarm Rate
 - ✓ Automatic Compensation for repeated transits of the same person

The metal detector provides an automatic count of the people passing through the access point in both directions and the related nuisance alarm percentage.



4 MULTI-ZONE DISPLAY BARS

Light bars indicate metal position vertically and laterally and can also show pacing lights.



HIGH PRECISION TRANSIT COUNTER

Two photocells fitted into the archway allow counting of transits, alarms and percentage of alarms.

Unmatched Throughput



- Cutting-edge discrimination technology allows personal effects to be ignored, creating rapid transit flow

The transit volume magnetic scanning system, invented by CEIA and applied since production of the first zonal Metal Detectors in 1986, allows state-of-the-art detection and discrimination results.

The PMD2 Plus has an extremely low nuisance alarm rate even at the strictest Security Levels requested today, and therefore allows high transit flow rates and the minimum need for intervention by inspection personnel.



Most Powerful and Versatile Security Features



■ Up to 50 built-in Security Programs

- ✓ Up to 30 International Standards
- ✓ Up to 20 Customizable Levels

Setting the Security Levels could not be easier and more versatile than in the PMD2 Plus. Users can choose directly from the known International Standards or request implementation of a Standard personalized to their own requirements. Users can also create their own work program and save it in internal memory.



■ Chip Card system for fast, simple and secure parameter changes (i.e. alarm volume and tone, counter reading, etc.) and security level selection

One unique characteristic of the CEIA metal detectors is the chip-card system, which allows Security Management to set the Security Level quickly, reliably and without having to program the device in any way.



■ Any security standard can be enhanced with selectable random alarm probability



✓ CHIP CARD SYSTEM

Chip Card for automatic selection of Security Levels and parameter changes.

Rapid Installation



■ One touch guided automatic installation [OTS]

Innovative function assisting the installation through an automatic step-by-step procedure



■ Continuous self diagnostics assures monitored performance reliability

Exceptional immunity



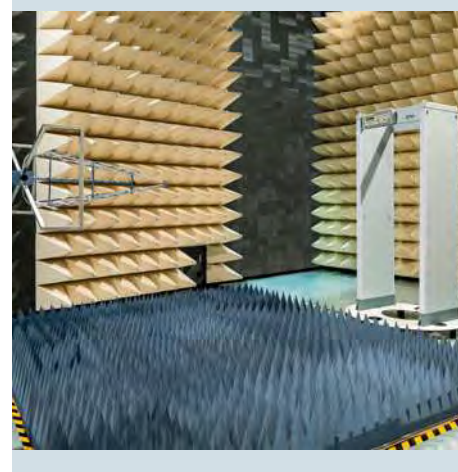
Exceptional immunity to environmental interferences makes the Metal Detector easy to use even when electrical noise is encountered.

Communication Capabilities



TYPE OF OPERATION	Ethernet	USB	Infrared	Bluetooth	RS-232
Maintenance	<input type="checkbox"/>	<input type="checkbox"/>		<input checked="" type="checkbox"/>	<input checked="" type="checkbox"/>
Remote Control	<input type="checkbox"/>		<input checked="" type="checkbox"/>	<input checked="" type="checkbox"/>	<input checked="" type="checkbox"/>
Remote Data Collection	<input type="checkbox"/>				

■ STANDARD □ OPTION



Model Selection

Features	PMD2 Plus/EZ	PMD2 Plus/PZ
Gate - Shape	Elliptic Column	Panel
Compliant with the strictest detection and discrimination standards for EMDs (Enhanced Metal Detectors)	■	■
4 display bars each programmable as zone indicators and/or pacing lights	■	■
60 localization zones (20 vertical x 3 lateral) with left, center and right indication	■	■
Chip Card Reader	■	■
Bluetooth, infrared and RS-232 communication	■	■
3-Level Password and hardware key access protection	■	■
Met-Identity technology (separate Ferrous and Non-Ferrous alarm signaling)	■	■
One Touch Automatic Self Installation (OTS)	■	■
Automatic Operational Functional Verification (OFV)	■	■
Automatic Vibration Compensation (AVS, EVA)	■	■
Automatic Channel Search (CS)	■	■
Automatic Environmental Noise Compensation (ENA)	■	■
Automatic Floor Gain Adjustment (FGA)	□	□
Automatic Technical Functional Verification (TFV)	□	□
Powered by safe low voltage DC	■	■
Anti-tamper on/off switch	■	■
High precision transit counter	□	■
Programmable Random Alarm capability*	□	■
Integrated web-server & logger (includes Ethernet and USB interface)	□	□
Weather resistant protection	□	□
Anti-vandalism, anti-tampering protection (with IP65 control unit)	□	□
IP65 protection (IP65 control unit, IP67 power supply adapter, anti-vandalism protections, weatherproof gate structure, compliant with IEC 60950-22)	□	□
Long life crossbar battery back-up	-	□
Embedded battery charger and under-voltage protection	-	□
32.3" useful passage width	□	□

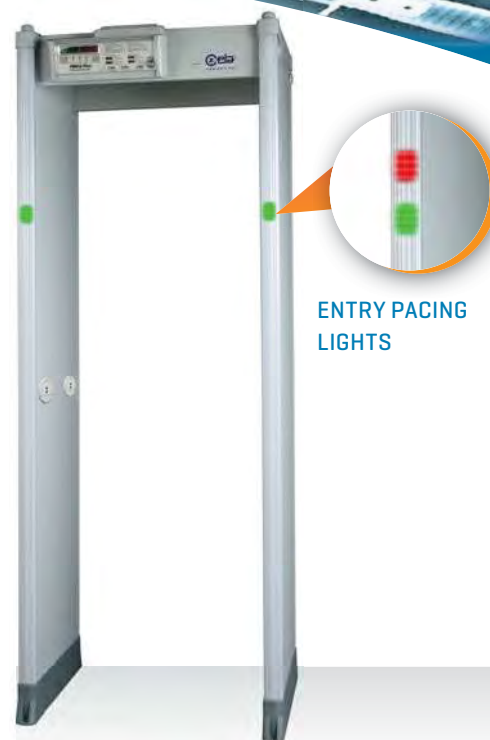


STANDARD




OPTION

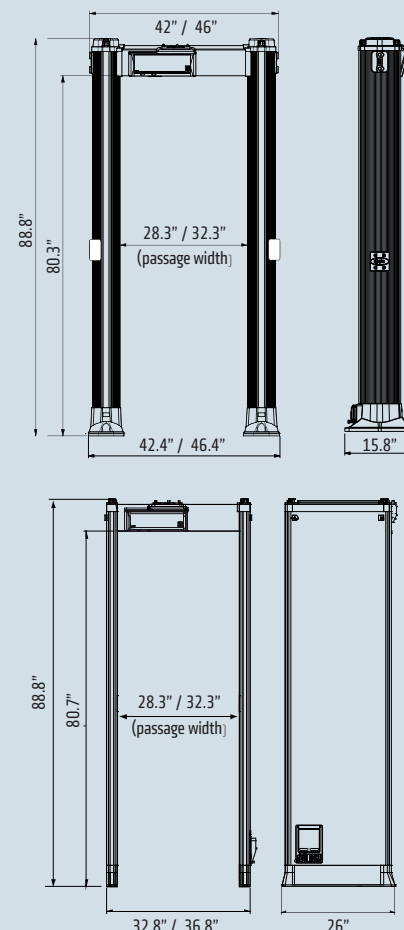
*Transit Counter required



ENTRY PACING LIGHTS

 PMD2 Plus is available in Panel and Elliptic Versions

Dimensions



Options / Upgrade Kits

➤ Weather Resistant Protection

Kit for upgrading the standard version to outdoor applications according to IEC 60950-22; this kit includes shelters, crossbars, protection covers for power supply and waterproof mains power supply adapter.

PANEL

- 28.3" passage width (part # 55630)
- 32.3" passage width (part # 55633)



ELLIPTIC

- 28.3" passage width (part # 55657)
- 32.3" passage width (part # 55658)



➤ Anti-vandalism, Anti-tampering Protection

This option includes stainless steel IP65 control unit, waterproof mains power supply adapter, protection covers for power supply and antenna connection compartments, equipped with screws requiring tools for removal.

PANEL: Part # 55629



ELLIPTIC: Part # 55659



➤ IP65 Protection

This option comprises the Weather Resistant and the Anti-vandalism kits.

PANEL

- 28.3" passage width (part # 55631)
- 32.3" passage width (part # 55632)

ELLIPTIC

- 28.3" passage width (part # 55660)
- 32.3" passage width (part # 55661)

➤ High precision Transit Counter

Two photocells fitted into the archway allow counting of transits, alarms and percentage of alarms. Panel versions are already equipped with transit counter.

ELLIPTIC: part # 46982



➤ Long life Crossbar Battery Back-up

Crossbar battery back-up in stainless steel case. Provides up to 8 hours of autonomous working time.

- 8 hours typical (5.5 hours minimum) continuous operation with PMD2 Plus

PANEL: part # 55681



➤ 32.3" Useful Passage Width

PANEL: part # 55635 ELLIPTIC: part # 55664

➤ Embedded Battery Back-up and Charger

Anti-tamper on/off switch, RS-232 interface, 35 minutes typical (25 minutes minimum) internal battery back-up with 12 hours mains disconnection diagnostic alarm.

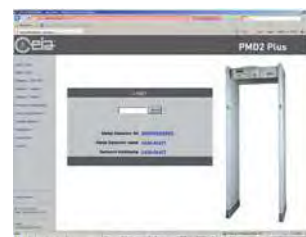
PANEL: part # APSM2Plus/P



➤ Integrated Web-server & Logger, Battery Back-up and Charger

Anti-tamper on/off switch, RS-232, USB, 10/100 baseT Ethernet interface, data logger, real-time clock, integrated web-server, transit statistical data analysis, 20' internal battery back-up with 12 hours mains disconnection diagnostic alarm.

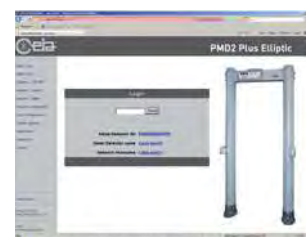
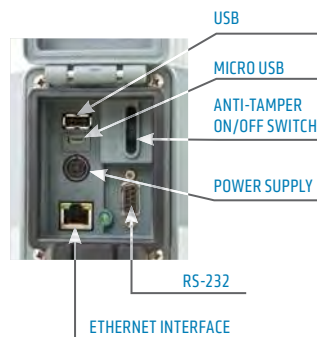
PANEL: part # APSM2Plus/P



➤ Integrated Web-server & Logger

Anti-tamper on/off switch, RS-232, USB, 10/100 baseT Ethernet interface, data logger, real-time clock, integrated web-server, statistical transit data analysis.

ELLIPTIC: part # APSM2Plus/E



Accessories

➤ Chip Cards

Chip cards for simple and secure selection of Security Levels and parameter setting. List of chip-cards available on request.

➤ MBSU-2

Independent, compact size, long life power supply in weatherproof stainless steel case, with embedded fast charger:

- 14 hours typical (10 hours minimum) continuous operation with PMD2 Plus
- 5 hours typical charging time.

Part # MBSU-2



➤ IRC-1

Infrared Remote Controller for wireless remote programming of the control unit. Part # 47180



➤ Upper Connection Module

This extension cable allows the connection of power supply and serial communication to personal computers or CEIA accessories, such as RCU-2. Part # 46650

➤ RRU

Remote relay unit (RRU) to repeat the detection alarms of the gate through a relay contact. The RRU module can be used for integration of the Metal Detector in interlocked door systems. Part # RRU

➤ Waterproof Mains Power Supply

IP67 power supply for outdoor applications. It is provided with flanges for simple installation. Part # 43564



➤ ID-Holder (panel version)

This accessory is designed to be hung on a crossbar of the archway, either at the entrance or the exit side. It can hold, for instance, a notice or an ID number for waiting people or for the screener.

Part # 64987



➤ Metal Detector Divesting Table for management of personal metal belongings

- Standard length: 24" (Part # 18074)
- Extended length: 47" (Part # 39491)



➤ RCU2

Control unit for full remote access, including alarm signaling and programming of CEIA Walk Through Metal Detectors (part # RCU2). The connection is performed via bluetooth (standard) or via cable connection (part # 3618).



VISUAL ALARM WITH ZONE INDICATION

➤ MD-Scope

Powerful, PC based installation and service software. Includes oscilloscope and terminal functionality (part # MD-SCOPE2).

The connection is performed via bluetooth (standard) or via cable connection (part # 3805).



➤ Stabilizing Plates (elliptic version)

Comfortable alternative to direct floor mounting.

- Standard version: part # 64355
- For uneven floor and mobile applications: part # 46938



➤ Tool-free assembly kit (elliptic version)

This accessory allows the detector to be assembled and disassembled quickly and without tools.

Part # 55699



➤ Stainless Steel Deck Dolly (panel version) for local moving of the panel metal detector gate

- Robust construction in AISI 316L stainless steel
- Rubber-covered castor-type wheels for easy movement
- Incorporated handles for transport

(available only for 28.3" useful passage width: part # 50789)



➤ Test Samples Kit

Reference Samples for accurate verification of the Security Level. Includes guided procedures and certificate of calibration.

Part # EMD-SK-GAL - Part # EMD-SK-GDML



PMD2 Plus

WALK-THROUGH MULTI-ZONE METAL DETECTOR

Specifications

KEY FEATURES	Elliptic column shape or traditional panel versions available		Automatic Environmental Noise Compensation (ENA)
	Wide range of threat detection from guns to ½ cutter blade		Met-Identity technology identifies and signals the metal type in real time
	60 localization zones (20 vertical x 3 lateral) with left, center and right indication		High precision bidirectional counter with automatic rescreening compensation
	One touch automatic self installation (OTS)		Chip Card capability for fast, simple, and secure programming
	Automatic Operational Functional Verification (OFV)		Random alarm capability programmable from 0% to 100%
	Automatic Vibration Compensation (AVS,EVA)		Exceptional Immunity to external interferences
	Automatic Channel Search (CS)		Powered by safe low voltage DC
	Automatic Floor Gain Adjustment (FGA)		Standard Interfaces: Bluetooth, Infrared
	Automatic Technical Functional Verification (TFV)		Other available interfaces: Ethernet, USB
QUALITY	Continuous self diagnostic system		
	Proven reliability		
	No periodic re-calibration and preventive maintenance required		
	No scheduled maintenance		
	Fully digital design		
WALK-THROUGH GATE STRUCTURE	State-of-the-art, robust and washable panels or compact elliptical columns		
	Protected against aging, weather and wear		
CENTRAL CONTROL UNIT	Ergonomic and robust design		
	High visibility alphanumeric display and programming keyboard		
	Made of advanced plastics or stainless steel and anti-vandalism construction (option)		
	Access to the front panel protected by hardware key and 3 levels of passwords		
ALARM SIGNALING	VISUAL SIGNALS	Multi-zone display bar for “height on person” localization	
		4 light bars with selectable entry/exit and pacing indication	
		Green and red metering signals proportional to the mass of the detected target	
	AUDIO SIGNALS	10 selectable continuous and pulsed tone plus 34 special tones	
10 selectable sound intensities ranging from 0 to 90 dBa at 1m			
TYPE OF SIGNALING	VISUAL	Fixed or proportional to the mass in transit - visible from 6m under lighting of 4000lux	
	VISUAL ZONE INDICATION	60 distinct zones (20 vertical x 3 lateral) entry and exit side	
PROGRAMMING	Up to 50 built-in security programs (up to 30 International Standards, up to 20 Customizable Levels)		
	Remote via Infrared Remote Control Unit, Bluetooth™ or Ethernet 10/100 base T (option) interface		
	SECURITY LEVEL	International Standard (IS) command	
		Chip card	
		Local by Control Unit alphanumeric display and keyboard	
OPERATIONAL FEATURES	Programming and chip card access protected by user and super-user passwords		
	Very high discrimination and transit flow rates five or more times greater than other metal detection systems		
	Quick reset time as short as 0.2 seconds for high throughput rate		
	Very high detection speed (up to 50 ft/sec.)		
	Built-in operational functional verification		
INSTALLATION DATA	One-touch key reading of inbound, outbound and Security Level Data		
	Automatic synchronisation between two or more metal detectors with distance of down to 2” without the use of external cables		
	Automatic Installation function (OTS)		

Environmental Data

- POWER SUPPLY : 100...240V~ -10/+15%, 47...63Hz, 40 VA max
- OPERATING TEMPERATURE: -4°F to 158°F (-35°F to 158°F upon request)
- STORAGE TEMPERATURE: -35°F to 158°F
- RELATIVE HUMIDITY: 0 to 95% (without condensation)

Certification and Compliance

- Compliant with the applicable Standards for Enhanced Metal Detectors
- Compliant with the applicable electromagnetic Standards on Human Exposure and Pacemaker Safety
- Compliant with all Airport Security Standards worldwide
- Compliant with applicable International Standards for electrical safety and EMC
- Harmless to magnetic media (CDs, tapes, etc.)

Applications

- Government Buildings
- Airports
- Courts
- Industries (Security)
- Prisons (visitors)
- Public Events
- Nuclear Facilities (Security)
- Cruise ships
- Data Processing Centers (EDP)
- Schools Security
- Amusement Parks
- Hotels

Comprehensive support

CEIA USA PROVIDES FULL OPERATIONAL AND TECHNICAL TRAINING SUPPORT BY CERTIFIED PERSONNEL EITHER AT CEIA USA FACILITY OR AT CUSTOMER PREMISES

- phone technical support
- in-house and on-site repair/services
- standard and custom training



CEIA USA Ltd - 9155 Dutton Drive, Twinsburg, OH 44087

Phone: [330] 405-3190 - Fax [330] 405-3196 - e-mail: security@ceia-usa.com

DP060K0041V4000uUS

www.ceia-usa.com

CEIA USA reserves the right to make changes, at any moment and without notice, to the models (including programming), their accessories and options, to the prices and conditions of sale