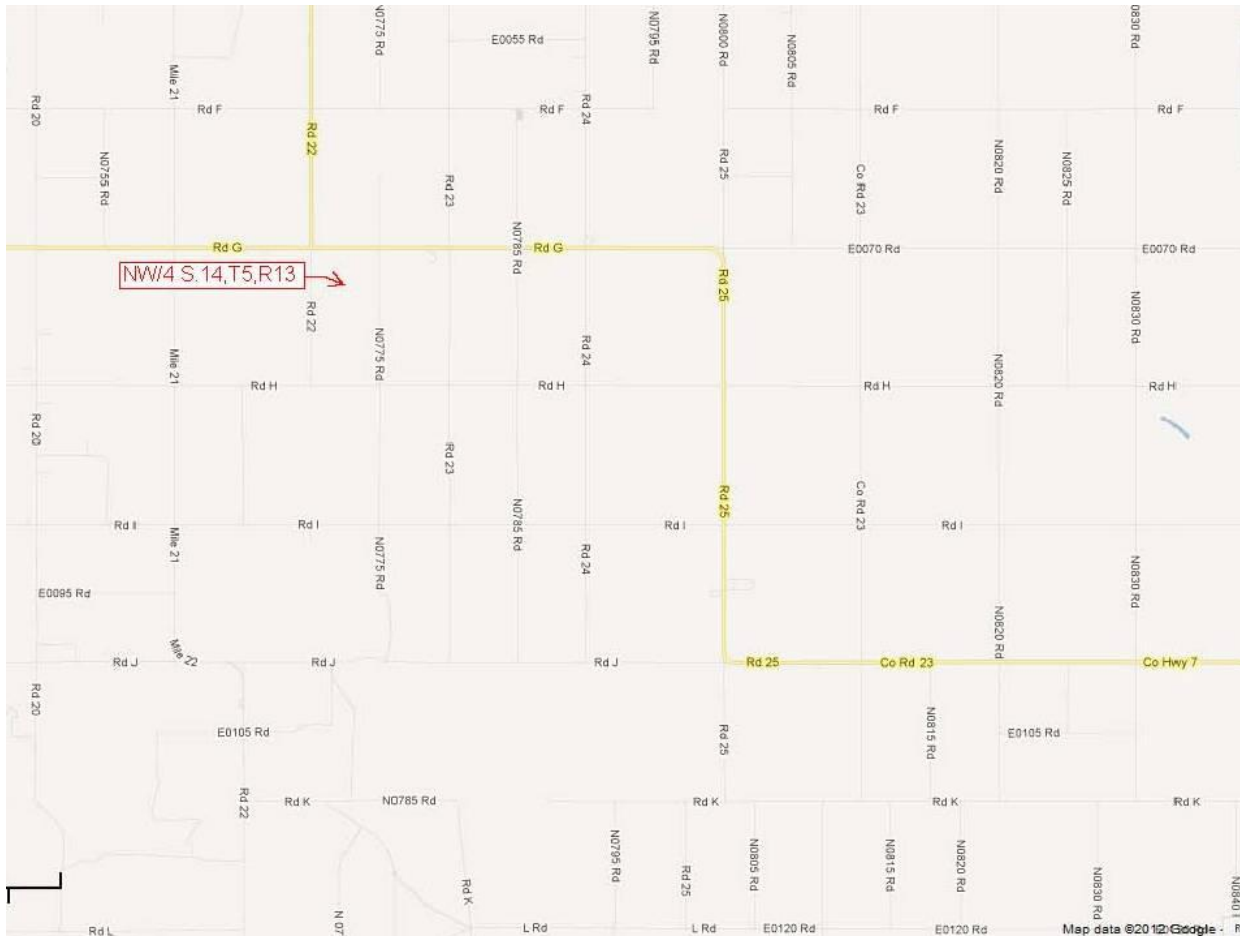


STATE OF OKLAHOMA
DIVISION OF CAPITAL ASSETS MANAGEMENT (DCAM)
REAL ESTATE & LEASING SERVICES

PUBLIC NOTICE
SEALED BID AUCTION FOR STATE LAND LEASE IN TEXAS COUNTY, OK
Pursuant to Title 74 O. S. Sec. 126.2

Deadline for bidding is Monday, November 26, 2012, 5:00 p.m.
Sealed Bids will be opened on Tuesday, November 27, 2012 @ 2:00 p.m.
2401 N Lincoln Blvd. - Will Rogers Building - 1st Floor Conference Room
Oklahoma City, OK 73105



ONE DAY ONLY WALK-ON INSPECTION: Monday, November 19, 2012, 11:00 a.m. until 2:00 p.m.

LEGAL DESCRIPTION: NW/4 Sec. 14, T5N, R13E of the Cimarron Meridian, Texas County, Oklahoma; 160 acres (mol)

PROPERTY DESCRIPTION: Farm land.

DIRECTIONS: From Guymon, OK head north on Hwy 136 north (County Rd 24) and stay on Hwy 136 north for approximately 8 miles - then turn West onto Hwy 7 (County Road 23) and continue about 4 miles to Road 25 and turn north. After approx. 4 miles the road curves west into Road "G" - continue for approximately 2.9 miles to property on the South of the Road. The property's NW corner and western border is south of the junction of Road 22 and Road "G".

TERMS AND CONDITIONS OF AUCTION AND BIDDING:

ANNOUNCEMENTS ON THE DAY OF SALE SUPERCEDE ALL OTHERS, WRITTEN OR ORAL

DCAM, on behalf of the OK Dept. of Human Services, reserves the right to reject any or all bids at the sealed bid auction. NO BID IS OFFICIALLY ACCEPTED UNTIL APPROVAL BY THE ADMINISTRATOR OF DCAM. Interested bidders may walk through the property 11:00 a.m. until 2:00 p.m. on Monday, November 19, 2012.

1. **Sealed BIDS must be received no later than 5:00 p.m. on Monday, November 26, 2012**, by mail: P. O. Box 53448, OKC, OK 73152, OR hand delivered to DCAM, Will Rogers Building, 2401 N Lincoln Blvd, Room 112, Oklahoma City, OK 73105.
2. All Bids are to be made on the official DCAM BID FORM attached and must be signed by the bidder or an authorized representative.
3. Bids are to be enclosed in a SEALED envelope, bearing the notation on the outside back of the envelope: "*BID for DHS/DCAM Lease of 160 acres Texas County, OK*".
4. Each bid must be accompanied by a check in the amount of 10% of the bid amount as a deposit, made payable to **Division of Capital Assets Management**. Checks will be returned to unsuccessful Bidders.
5. If the successful Bidder fails to pay the balance of the Lease price or fails to comply with terms and conditions of Auction and Bids, bidder shall FORFEIT all monies paid to DCAM as liquidated damages.
6. Leases are for three (3) years payable annually. Copy of lease and official bid forms available at walk-on inspection.
7. Possession will be given to the Lessee no earlier than December 1, 2012 and only after full payment of the first (1st) year's lease amount has been tendered to DCAM
8. The Prior Lessee shall have 60 (sixty) days after the termination of the prior lease to remove all non-state owned property; prior lease terminates December 1, 2012.
9. The State of Oklahoma makes no warranties or representations of any kind, and the property is being leased subject to all easements, right-of-ways, and restrictions of record. Prospective bidders are advised to inspect the property for themselves at the walk-through before bidding. All acreages are approximate and should be measured prior to bidding by interested bidders.

BID FORMS WILL BE AVAILABLE AT WALK-THROUGH OR BY REQUEST.

For more information call: (405) 521-3819 or lorrie.gray@omes.ok.gov