

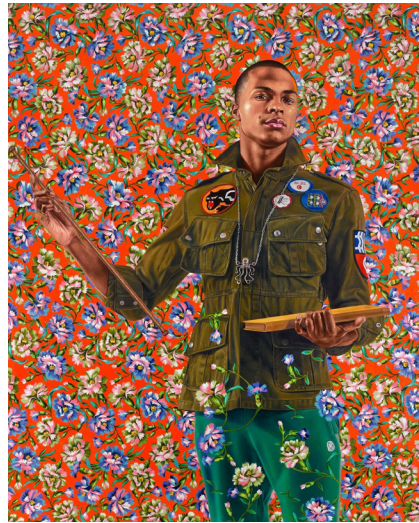
Erin Latham | Session 4:

Kehinde Wiley: Collaborative Portraiture

List of Required Supplies: Pencil, paper or canvas board, watercolor set, paint setup: brush, water cup, paper towels, crayons.

Space/Facility Requirements: Table space, chair, running water.

Student Time Required: 60 minutes



Information on the Artist:

Kehinde Wiley is an American portrait painter based in New York City who is known for his highly naturalistic paintings of Black people. He was commissioned in 2017 to paint a portrait of President Barack Obama for the Smithsonian National Portrait Gallery, which exhibits a series of portraits of America's presidents (https://en.wikipedia.org/wiki/Kehinde_Wiley). Wiley's work uses iconographic traditional painting and sculpture techniques to depict Black people in powerful positions. This harkens back to previous art historical tendencies of stately portraiture.

Additional Links:

<https://kehindewiley.com> (artist's site)

<https://www.youtube.com/watch?v=5pwkZh8Ljug> (videos)

Step-by-step Instructions:

1. Find a partner
2. Sketch your partner's image on a large paper.
3. Trade papers.
4. In the background of your new self portrait create a pattern based upon your life. (Example, your grandma's favorite flower, a pattern from your culture, something that represents you). Let some of the pattern flow on top of your figure like the artist does.
5. Color your self portrait with crayons leaving some blank areas on your paper.
6. Use watercolor to paint your artwork, try to choose one dominant color for your background.

