



Image 1

Click the HMO Health Risk Assessment button to complete the HRA required to enroll in an HMO Wellness Alternative Plus plan. This will take you to a page with instructions for getting started on the HRA. See Image 2.

Click the HealthChoice Health Risk Assessment button to complete the HRA required for the H.E.L.P. ✓ incentive payment. This will take you to the ClaimLink log in page. (See Image 3.)

Getting Started on the HRA

Step 1:

- If you are already a registered user, log in using your User ID and Password, or
- If you are not already a registered user, click the *Register Now* link and follow the directions in Step Two

Step 2:

- Enter your information, including the Member ID number*, and then click Continue
- You will then be prompted to create a unique User ID and Password

*Your Member ID number is located on your HealthChoice ID card and, for education and local government employees, in Section A of your 2012 Option Period Enrollment/Change Form.



Image 2

Click the HRA button on the top of the screen to continue.

After registering, enter the User ID you created in the Member Login section and click *Log In*. If you forget your User ID, click *Forgot User ID?* and follow the instructions.

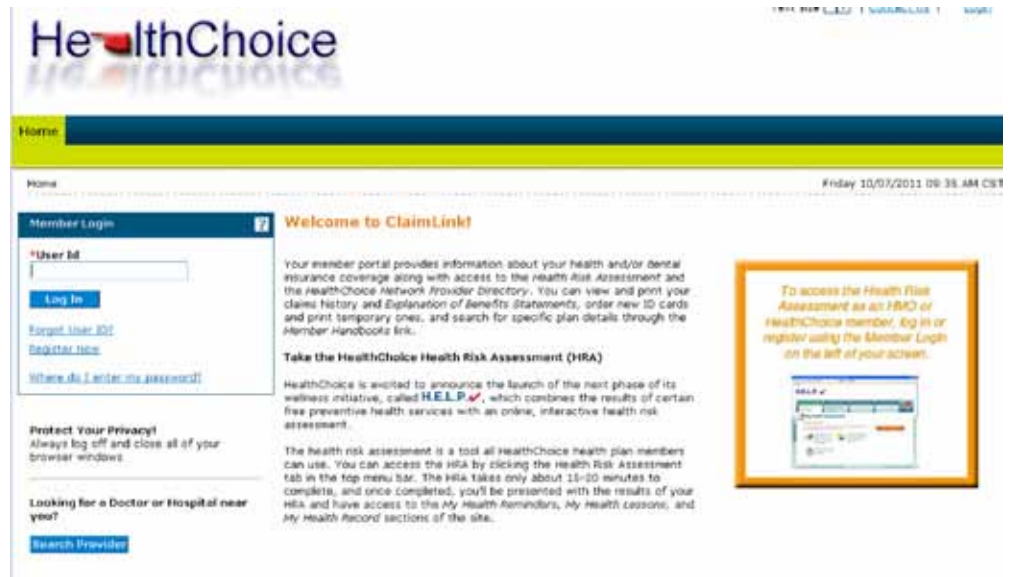


Image 3

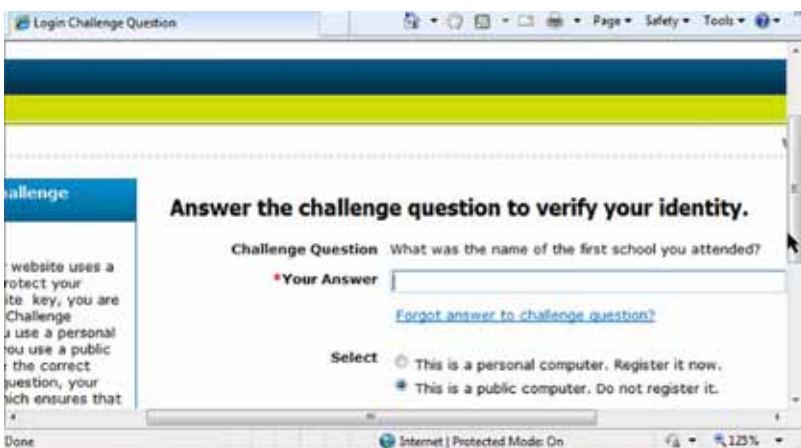


Image 4

To verify your identity, enter the answer of the challenge question you created during registration. Select if you are using a personal or a public computer and click *Continue*.

Confirm that the site key token and passphrase displayed are correct; enter the password you created during registration; and click *Continue*. If you forget your password, click *Forgot Password?* and follow the instructions.

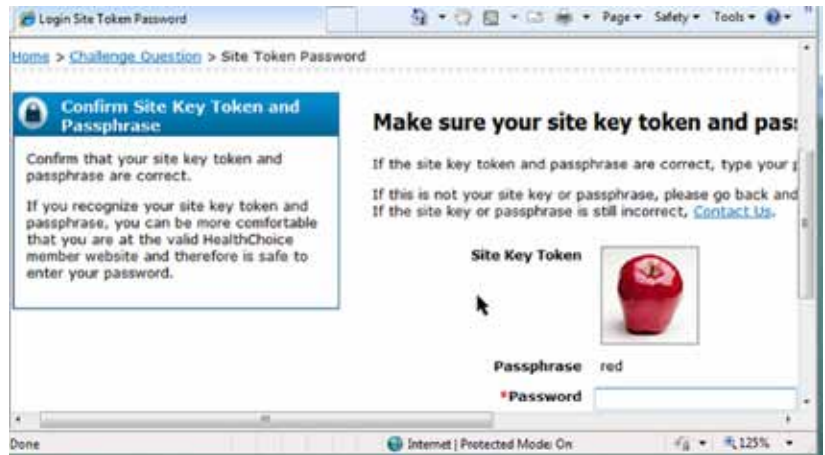


Image 5



Image 6

Once you successfully log into ClaimLink, take time to read the important information in the middle of the page. To access the HRA, click the *Health Risk Assessment* tab in the top menu bar.

The Health Risk Assessment application will open in a new window. Select *Proceed* to continue or *Cancel* to return to ClaimLink.

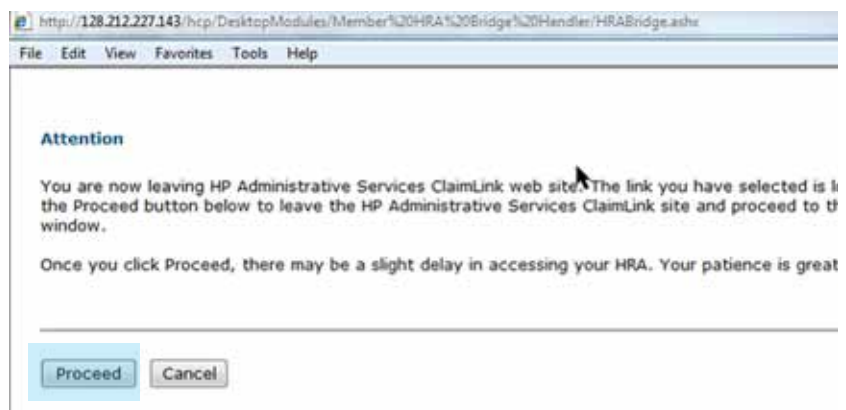


Image 7



Image 8

If this is your first time to access the HRA, a User Supplemental Info screen will be displayed. Complete the *Gender*, *Race*, and *Health Plan* fields by selecting from the drop down menus. If you previously accessed the HRA, you will not see this screen.

If you are completing the HRA to qualify for the H.E.L.P. ✓ incentive payment, select *HealthChoice* in the *Health Plan* drop down menu.

If you are completing the HRA to enroll in one of the HMO Wellness Alternative Plus plans, select your plan choice from the *Health Plan* drop down menu.

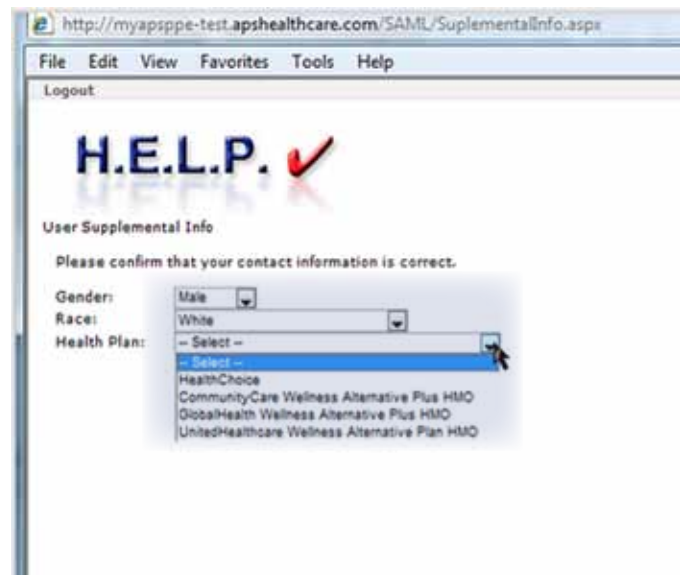


Image 9



Image 10

Click *Complete Health Assessment* to begin the HRA.

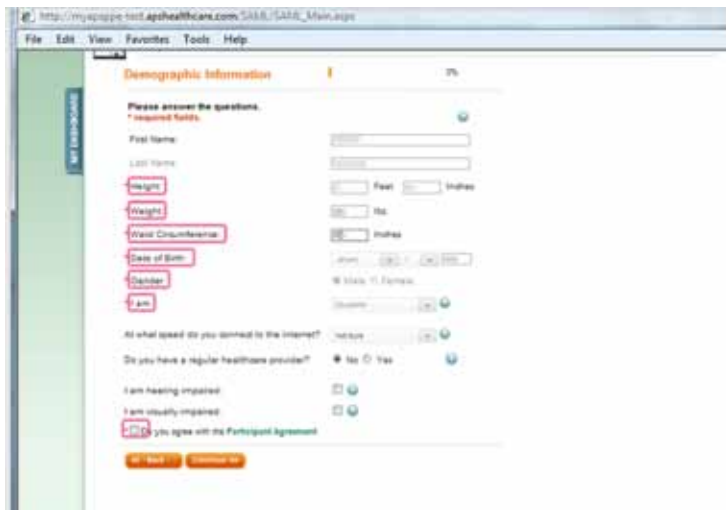


Image 11

On the *Demographic Information* screen, you must complete the fields with a red asterisk to continue the HRA. Click the Question Mark icons for assistance.

Use the *Back* or *Continue* buttons to navigate through the HRA. You may need to use the scroll bar on the right hand side of the screen to access all of the questions on a screen.



Image 12

As you proceed through the HRA, your progress is indicated by the orange bar and completion percentage to the right of the screen name.

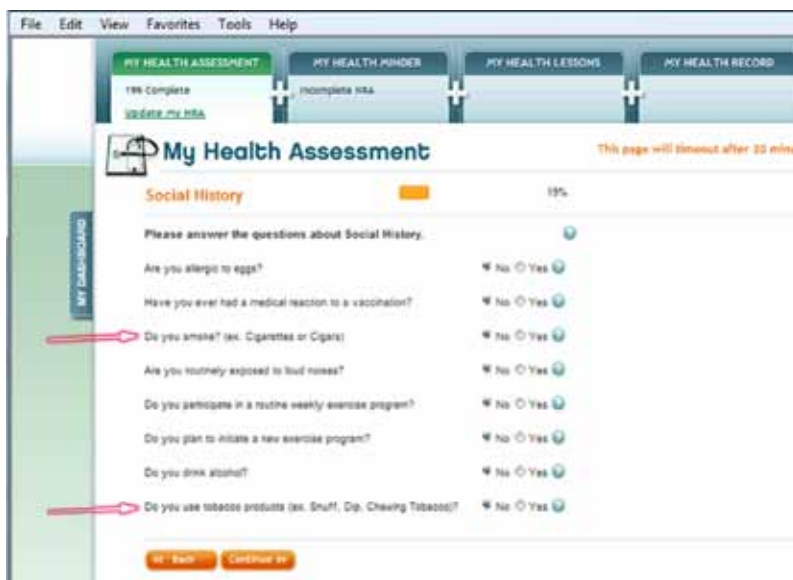


Image 13

To qualify for the H.E.L.P. ✓ incentive payment, primary HealthChoice health plan members must answer the questions *Do you smoke?* and *Do you use tobacco products?* on the Social History screen.



Image 14

A pop-up dialog box will appear on the *Screening\Procedures\Discussion History* screen to help prevent you from locking your HRA record. If you are uncertain of the date of a procedure, leave it blank and continue with the rest of the HRA. You can come back at a later time and update your HRA with the correct date.

On the *Screening\Procedures\Discussion History* screen, primary HealthChoice health plan members must enter the 2011 dates of their cholesterol and fasting blood glucose tests and blood pressure reading to qualify for the H.E.L.P. ✓ incentive payment. After entering the dates on these and any other tests applicable to you, be sure the *Never had one* box is unchecked.

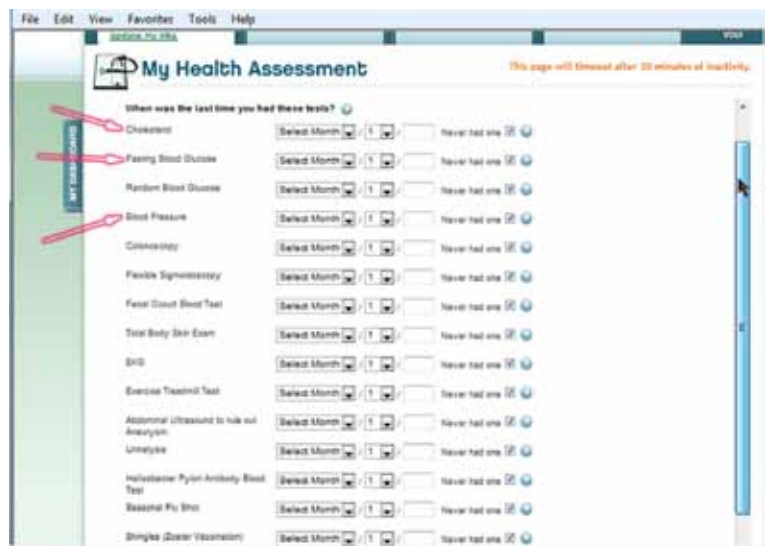
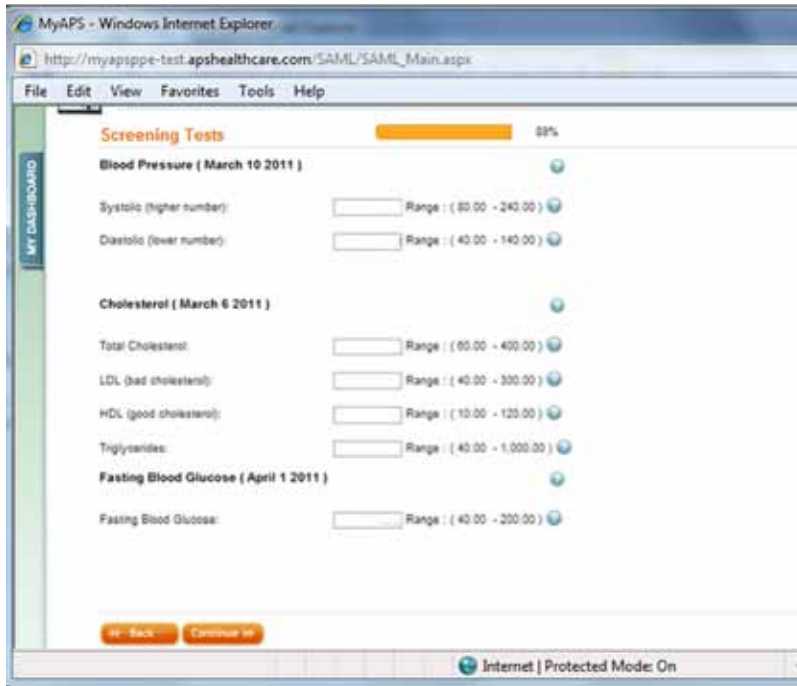


Image 15



Primary HealthChoice health plan members must complete the *Systolic, Diastolic, Total Cholesterol, LDL (bad cholesterol), HDL (good cholesterol), Triglycerides, and Fasting Blood Glucose* fields on the *Screening Tests* screen to qualify for the H.E.L.P. ✓ incentive payment.

Image 16



Image 17

Congratulations! You have successfully completed the HRA. Click *Go To My Dashboard* to access the *My Health Reminders, My Health Lessons, and My Health Record* sections of the HRA.

To enroll in an HMO Wellness Alternative Plus plan, before clicking *Go To My Dashboard*, print this screen and submit it to your Insurance Coordinator along with your enrollment/change form.