

Oklahoma State Bureau of Investigation

SIBRS INTERFACE SPECIFICATION



OSBI SIBRS XML Interface Control Document

Revised March 10, 2011

Version 3.11

Table of Revisions

| Release Date | Version ID | Notes, Comments, and References |
|-------------------|------------|--|
| May 12, 2003 | 1.0 | Initial version. |
| June 6, 2003 | 1.1 | Added field description and separated the max occurs field from mandatory/optional. Also added definitions for the new columns added to the table. |
| June 9, 2003 | 2.0 | Revised based on OSBI review. |
| June 26, 2003 | 2.02 | Additional revisions based on further field occurrences review. |
| October, 2003 | 3.02 | Updated definitions to reflect phase 2 of the SIBRS system. See Addendum #1 for details. |
| October 15, 2003 | 3.03 | Found one missing reference to changes on the Addendum #1. |
| December 23, 2003 | 3.04 | <i>For both Type 1 and Type 2:</i> Removed redundant JustHomCirc tag. Changed the maximum occurrences of the AggrAssaultHomCirc tag to 5. Added the Relation attribute to the VictimizedBy tag. Revised the sample XMLs for Type 1 and Type 2. |
| June 20, 2004 | 3.05 | Added Appendix A to itemize all the possible code values for some of the XML elements. Also updated XML definition in VictimizedBy section. Relation is an Element but it was listed as Attribute. Updated the sample XMLs to remove empty tags. |
| July 15, 2004 | 3.06 | Added SubmissionStatus Replacement for Appendix A. Corrected Segment 4 <Offense> to corrected value. |
| Sept 1, 2004 | 3.06 | Page 7 changed "Age" and "AgeMax" to S from N. |
| Sept 1, 2004 | 3.06 | Page 11 added note on "GangAffiliation" to free format text. |
| Sept 1, 2004 | 3.06 | Added cross references for SIBRS Codes Tables and Appendix A in this document. |
| Dec. 16, 2004 | 3.07 | Property Segment, <DateRecovered> field added, Type1, Type2 |
| Dec. 16, 2004 | 3.07 | Property Segment, <DrugType> field changed from optional (O) to Required if Applicable (R/A), Type 1, Type 2 |
| Dec. 16, 2004 | 3.07 | Property Segment, <Quantity> field changed from optional (O) to Required if Applicable (R/A). |
| Dec. 16, 2004 | 3.07 | Property Segment, <QuantityUOM> field changed from optional (O) to required if applicable (R/A). |

| | | |
|----------------|------|---|
| Dec. 16, 2004 | 3.07 | Vehicle Segment, <TowedTo> changed 1-100 characters |
| Dec. 16, 2004 | 3.07 | Reporting Officer Segment, change ReportingOfficer to contain no spaces. |
| Dec. 16, 2004 | 3.07 | Offense Segment, Change <ActivityType> reference from 26:24 to 23:40 |
| Dec. 16, 2004 | 3.07 | Victim Segment, Age changed from optional (O) to from to required if applicable (RA) |
| Dec. 16, 2004 | 3.07 | Victim Segment, changed <LocationofInjury> from one occurrence to maximum of 5 occurrences |
| Dec. 16, 2004 | 3.07 | Suspect Arrestee segment, |
| Dec. 16, 2004 | 3.07 | Vehicle Segment, <TowedTo> changed to up to 100 characters |
| Dec. 16, 2004 | 3.07 | Admin Segment, type 2 Only, change <CaseClearance> from optional (O) to required if applicable (M) |
| Dec. 16, 2004 | 3.07 | Admin Segment, type 2 only, added <IsCompleted> to segment |
| Dec. 16, 2004 | 3.07 | Victim Segment, type 2 only, change <Race>, <Age>, <Sex> from optional (O), to required if applicable (RA). |
| Dec. 16, 2004 | 3.07 | Page 2, Update of items 2, 3 and 10. |
| Dec. 16, 2004 | 3.07 | Appendix A Page 47 "IsLEOKA" Admin segment definition updated |
| Dec. 16, 2004 | 3.07 | Suspect Arrestee segment, <ArmedWith> changed from optional (O) to required if applicable (R/A) |
| Dec. 16, 2004 | 3.07 | Suspect Arrestee segment <AgeMax> changed from required if applicable (R/A) to Optional (O), Type 2 only |
| Dec. 16, 2004 | 3.07 | Suspect Arrestee segment <Age> changed from required if applicable (RA) to Mandatory (M), Type 2 only |
| Dec. 16, 2004 | 3.07 | <Arrest> segment, <ArrestedOn>, <IncidentTrackingNum>, <MultipleArrest>, <ArrestType>, <OffenseCode> changed from optional (O) to required if applicable (R/A) Type 2 only Discussion for Type 1 |
| June 24, 2005 | 3.08 | Added tags to accommodate officers |
| Feb 22, 2010 | 3.09 | Removed references to Type-2 reporting and changed all the XML file examples to reflect Type-1 submission only. |
| Sep. 22, 2010 | 3.10 | Removed additional references to Type-2 and modified tags. |
| March 10, 2011 | 3.11 | Updated document to reflect: NIBRS Addendum for Submitting Additional Location and Property Data Values & NIBRS Addendum for Submitting Cargo Theft Data |

Table of Contents

| | | |
|------------|--|-----------|
| 1.0 | INTRODUCTION | 1 |
| 1.1 | SCOPE..... | 1 |
| 1.2 | GENERAL REQUIREMENTS AND BASIC PROCESS | 1 |
| 1.3 | REFERENCES..... | 3 |
| 2.0 | SPECIFICATIONS | 4 |
| 2.1 | SIBRS OVERVIEW OF OPERATION | 4 |
| 2.2 | FULL (TYPE 1) DATA..... | 5 |
| 2.2.1 | <i>Type 1 XML Data</i> | 5 |
| 3.0 | XML FILE EXAMPLES | 22 |
| 3.1 | TYPE 1 SAMPLE XML DATA – EXAMPLE 1 | 22 |
| 3.2 | TYPE 1 SAMPLE XML DATA – EXAMPLE 2..... | 24 |
| 3.3 | TYPE 1 SAMPLE XML DATA – EXAMPLE 3 | 29 |
| 4.0 | USAGE OF ID AND IDREF TYPES | 33 |
| 5.0 | GLOSSARY OF TERMS | 35 |
| 6.0 | ADDENDUM #1 | 36 |

1.0 Introduction

The purpose of this document is to serve as a reference guide to XML incident data formats and the process by which XML incident data will be accepted by the OSBI State Incident Based Reporting System (SIBRS). The incident data can be "uploaded" into the SIBRS system and serve as an agency's main type of incident reporting input. This incident data file upload mechanism serves as an alternative to the web form method of input also offered by the SIBRS system.

Several Oklahoma agencies are currently using RMS (Record Management System) to capture crime-related data. The RMS may have the ability to produce an export file that can be the basis for data required for SIBRS reporting. This document defines the specific format of the XML tags and data that may appear in these files to represent incident data.

The major goals for this XML interface definition are:

- To simplify the input of SIBRS incident reporting data for those agencies which currently operate a record management system.
- To offer an alternative data input mechanism other than the SIBRS web forms.
- To describe the format of the XML data and the basic process of uploading the data to the SIBRS system.

1.1 Scope

This document encompasses the file upload interfaces of the SIBRS system that are available to agencies. It does not attempt to address individual agency issues that may arise from the use of internal software systems. These issues should be directly reviewed and addressed with the OSBI SIBRS support team.

1.2 General Requirements and Basic Process

The basic process of the SIBRS XML incident data upload system is described below. In order for this process to be successful, participating agencies must:

- The vendor/agency will complete a SIBRS Certification Request prior to testing.
- The certification process requires three consecutive submissions with less than a 2% error rate. Submission files must contain a minimum of 50 XML files and data must be live data from the RMS. Initial test file may contain a sample file to verify XML structures, however, will not count towards your three consecutive submissions. The final process for certification is an audit of the agency RMS.
- Have access to the Internet and have received appropriate SIBRS user credentials (IDs and Passwords) as issued by OSBI.

-
- Have established a means by which the XML data format described herein can be produced repeatedly and reliably. This may require custom software enhancements to internal RMS to accomplish this requirement.
 - Create regularly scheduled procedures for generating the XML data and performing the upload process to the SIBRS system.
 - Have procured a software tool capable of creating "zip" archives (such as WinZip). The XML files to upload must be placed inside of a zip archive.

Once these have been attained, the general process of SIBRS XML data upload shall follow the process described below:

1. Create a zip archive from the one or more XML files that represent the incident reports to be submitted. Each incident report should be contained in a separate XML file. This zip archive file shall be named using the sequence: Agency ORI+Report year+Report month+"_" +Current Year +Current month + Current day. For example, OK0550500200304_20100215.ZIP is a valid filename.
2. Each XML file should contain the ORI#+Incident Number. For example, OK055050004000100.xml
3. During testing, submit complete test XML file to Field Services Unit at the OSBI. ***Note: Once certified by the OSBI, skip step 3.**
4. Sign on to the OSBI SIBRS system using the Internet and the user ID and password provided that supports SIBRS XML data upload.
5. Select the "Incident Upload – Full Incidents" from the SIBRS system home page.
6. The system will open a window and permit the user to browse for the zip file name. Enter the name of the zip file that contains the incident report XML data.
7. Follow any on-screen instructions provided during the XML file upload process.
8. Once the data transfer and submission is complete a confirmation message will be displayed indicating the successful transfer of data.
9. The SIBRS system will send an E-mail containing the result of the submitted incident data validation to the address stored in the profile of the user that uploaded the zip file. Instructions describing the steps to correct errors associated with the data will be provided.
10. Note special characters are not permitted in the zip file name or the XML file name. No hyphens, number signs etc. Basically only numbers and letters should be used. Special characters are not permitted in XML, reference: <http://www.asciitable.com/>

1.3 References

This section lists referenced documents attachments or outside this document.

OSBI National Incident Based Reporting System Training Manual.

OSBI SIBRS Codes Dictionary.

FBI, National Incident-Based Reporting System, Volume 1 Data Collection Guidelines:
<http://www.fbi.gov/ucr/nibrs/manuals/v1all.pdf>

FBI, National Incident-Based Reporting System, Volume 2 Data Submission Specifications: <http://www.fbi.gov/ucr/nibrs/manuals/v2all.pdf>

FBI, National Incident-Based Reporting System, Volume 4 Error Message Manual:
<http://www.fbi.gov/ucr/nibrs/manuals/v4all.pdf>

FBI, National Incident-Based Reporting System, Conversion of NIBRS Data to Summary Data: <http://www.fbi.gov/ucr/nibrs/manuals/conversion.pdf>

2.0 Specifications

This section defines the specifics of the XML interface to the SIBRS system.

2.1 SIBRS Overview of Operation

Figure 1 depicts the overall functional architecture of the SIBRS system. In addition to XML data management capabilities, it provides several important components to implement the SIBRS functions:

- **SIBRS Portal** – is the main user interface to the SIBRS system.
- **SIBRS Forms** – provides web-based forms for collection of incident data
- **SIBRS Compliance** – performs validation error-checks on incident data
- **SIBRS Access** – controls the authentication and authorization to SIBRS
- **SIBRS Analytics** – provides the analysis and reporting functions of SIBRS
- **SIBRS Integration** – provides integration to third party systems
- **SIBRS Repository** – databases holding Full (Type 1) data

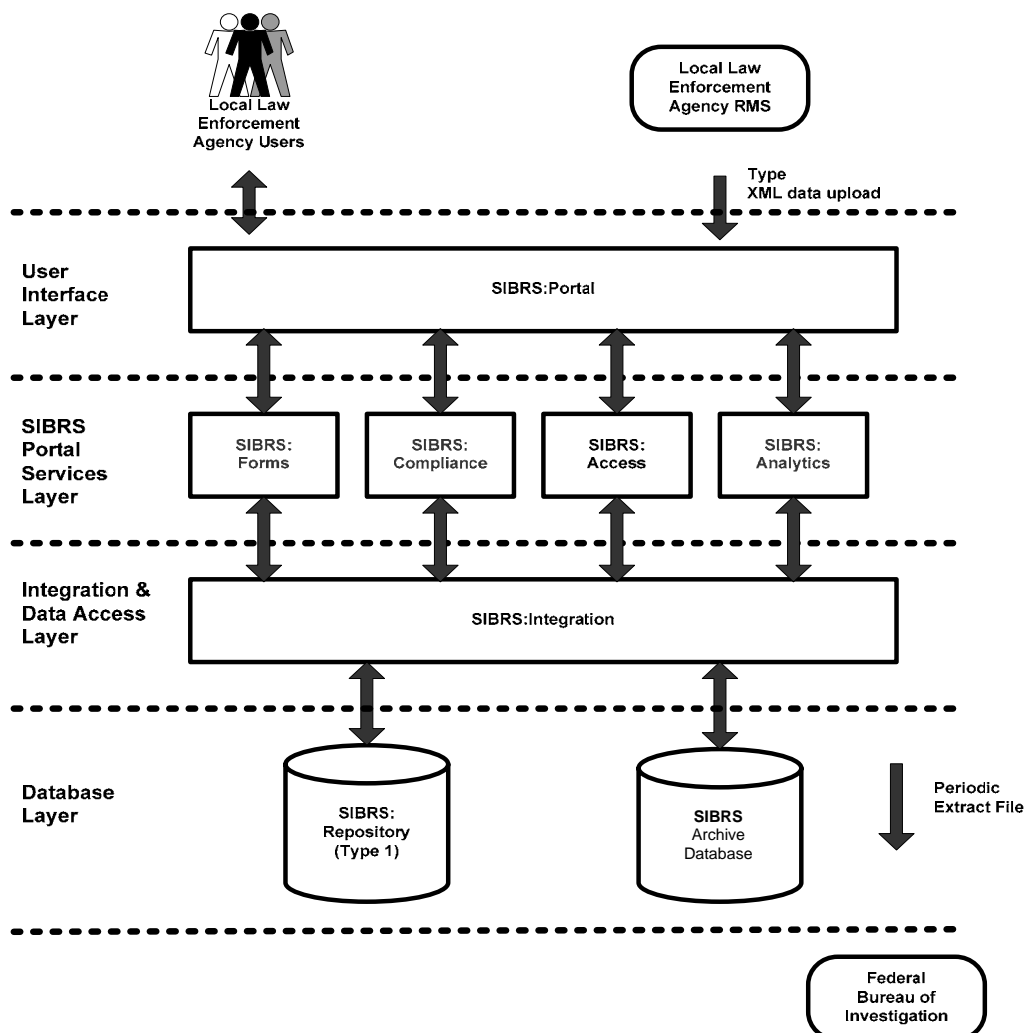


Figure 1 - SIBRS System Functional Architecture

2.2 Full (Type 1) Data

The data elements identified as Type 1 consists of incident data that is reported in addition to the minimum SIBRS system requirement. This data is collected in full as listed in the sample statewide Oklahoma incident forms. Detailed information for the following data segments are collected depending on the incident reported.

- Full Victim – provides information about the victim(s) involved in the incident.
- Full Offender – provides information about offender(s) involved in the incident, if known.
- Full Reporting Party – provides information about the reporting party(ies) involved in the incident.
- Full Witness – provides information about the witness(es) involved in the incident, if any.
- Full Parent (minor victim) – provides information about the parent if the victim is a minor.
- Full Reporting Officer – provides information about the reporting officer in the incident. The sample form does not include full name and title; the officer number is expected to relate to a database table with full officer information.

2.2.1 Type 1 XML Data

2.2.1.1 XML Data Definition

The following table defines the XML tags and identifies the data elements that can appear in a Type 1 incident file.

- Serial Num (Ser-Num) indicates the data section ordering and sub-section ordering within the XML file.
- XML Tag indicates how the data is delimited in the document. **Green bold notes indicate PAGE and REF number from the SIBRS Code Tables Version 1.5 for ease of reference. Please note: (#:#) The first number indicates the Page number and the second number indicates the Table Reference Number.**
- Parent Tag Name specifies the parent segment to which the XML Tag belongs.
- E/A stands for Element/Attribute, it determines whether the data item appears as a data value (element) in or as an attribute of the XML.
- Type indicates whether the data is a numeric, character string or date/time value.
- Len (Length) specifies the maximum width of the data may appear in the incident file.
- M/O stands for whether the item is optional or mandatory. If it is determined a RMS collects optional data elements, the XML tag is required.
- R/A denotes that the data is conditionally required.
- Max Occurs stands for Maximum occurrences of possible representing a data element.
- Tag Description is the description of what the tag is and how it will be used.
- The Type "ID" and "IDREF" represents a system identification number for the data entity. *Refer to Section 4.0 of this document for more detailed information on the use of ID and IDREF attribute types. Note: ID can only contain numeric characters.*
- Blue text indicates the latest changed element in this document (this version only).

| Incident Segment | | | | | | | | |
|------------------|-------------------------------|-----------------|-----|------|-----|-----|------------|---|
| Ser-Num | XML Tag | Parent Tag Name | E/A | Type | Len | M/O | Max Occurs | Tag Description |
| 1 | <Incident> | Root Element | | | | | | This tag marks the start of incident data. It is the "outer most" tag for the XML file. |
| | IncidentNum | <Incident> | A | S | 12 | M | 1 | Defines the case number for this incident. |
| | ORINum | <Incident> | A | S | 9 | M | 1 | Specifies the Originating Agency Identifier assigned to the local agency. |
| | ValidationStatus (6:53) | <Incident> | A | S | 1 | M | 1 | Indicates the validation status of the incident data. |
| | SubmissionStatus (6:54) | <Incident> | A | S | 1 | M | 1 | Indicates whether the incident has been or needs to be submitted to the FBI. |
| | SupervisorReviewStatus (6:55) | <Incident> | A | S | 1 | M | 1 | Indicates whether the incident report needs to be reviewed by a supervisor. |

| Administrative Segment | | | | | | | | |
|------------------------|-------------------------|-----------------|-----|------|-----|-----|------------|---|
| Ser-Num | XML Tag | Parent Tag Name | E/A | Type | Len | M/O | Max Occurs | Tag Description |
| 2 | <Admin> | <Incident> | | | | | | Marks the start of the Administrative segment of the incident report. |
| | <IncidentType> (6:56) | <Admin> | E | S | 2 | M | 1 | Specifies a SIBRS code value that represents the type of incident report being submitted. |
| | <ClearedOn> | <Admin> | E | D/T | | R/A | 1 | Identifies the Exceptional Clearance Date for the incident report. |
| | <CaseClearance> (7:4) | <Admin> | E | S | 1 | M | 1 | Specifies a SIBRS code value that represents the reason for the case being cleared. |
| | <ReportedOn> (7:3) | <Admin> | E | D/T | | M | 1 | Specifies the date/time on which the incident was reported. |
| | <OccurredFrom> (7:3) | <Admin> | E | D/T | | M | 1 | Specifies the starting date/time on which the incident has occurred. |
| | <OccurredTo> (7:3) | <Admin> | E | D/T | | O | 1 | Specifies the ending date/time on which the incident occurred. |
| | <IsComplete> (7:57) | <Admin> | E | N | 1 | O | 1 | SIBRS code that Indicates whether the incident has been finished. |
| | <ReportCategory> (7:58) | <Admin> | E | N | 1 | O | 1 | Do not utilize this tag until further notice. |
| | <CargoTheft> (7:2A) | <Admin> | E | N | 1 | R/A | 1 | NIBRS value that Indicates whether the incident involves cargo theft. |
| | <IsLEOKA> (7:59) | <Admin> | E | S | 1 | M | 1 | Specifies a SIBRS code value that represents whether the incident is |

| | | | | | | | | | |
|-----|--------------|------------|---|---|-------|---|---|--|--|
| | | | | | | | | a LEOKA incident. | |
| 2.1 | <Location> | <Admin> | | | | | | 1 | Marks the start of Location information within the Administrative segment. |
| | <CareOfLine> | <Location> | E | S | 1-100 | O | 1 | Specifies the Area location such as Residential, Business, etc... | |
| | <StreetName> | <Location> | E | S | 1-100 | O | 1 | Specifies the Street Address (number and name), where the incident has occurred. | |
| | <UnitNum> | <Location> | E | S | 1-10 | O | 1 | Specifies the Suite / Apartment Number of the location. | |
| | <City> | <Location> | E | S | 1-50 | O | 1 | Specifies the City where the incident occurred. | |
| | <State> | <Location> | E | S | 2 | O | 1 | Specifies the State where the incident occurred. | |
| | <Zip> | <Location> | E | S | 5-10 | O | 1 | Specifies the Zip Code where the incident occurred. | |
| | <Geo1> | <Location> | E | S | 100 | O | 1 | Specifies the geographic location where the incident occurred. | |

| Reporting Officer Segment | | | | | | | | | |
|---------------------------|------------------------|------------------------|---------------------------------|-----|----|---|---|---|--|
| Ser-Num | XML Tag | Parent Tag Name | E/A | | | | | Type | |
| 3 | ReportingOfficer | <Incident> | Multiple Occurrences & Optional | | | | | | Marks the start of the Reporting Officer Segment of the Incident Report. |
| | <OfficerNum> | <ReportingOfficer> | E | S | 10 | M | 1 | Indicates the Reporting Officer identification number. | |
| | <Role> (8:60) | <ReportingOfficer> | E | S | 1 | M | 1 | Indicates the Role of the Reporting Officer. | |
| 3.1 | <ReportingOfficerTime> | <ReportingOfficer> | Multiple Occurrences & Optional | | | | | | |
| | <FromDate> | <ReportingOfficerTime> | E | D/T | | M | | Specifies the starting date/time on which the officer has reported. | |
| | <ToDate> | <ReportingOfficerTime> | E | D/T | | M | | Specifies the ending date/time on which the officer has reported. | |

| Victim Segment | | | | | | | | | |
|----------------|-----------------------|-----------------|----------------------|----|------|-----|---|--|---|
| Ser-Num | XML Tag | Parent Tag Name | E/A | | | | | Type | |
| 4 | Victim | <Incident> | Multiple Occurrences | | | | | | Marks the start of the Victim Segment of the Incident Report. |
| | ID | <Victim> | A | ID | | M | | Specifies the system Identification number for the Victim. | |
| | <VictimType> (8:25) | <Victim> | E | S | 1 | M | 1 | Specifies a SIBRS code value that represents the type of Victim. | |
| | <VictimOtherTypeDesc> | <Victim> | E | S | 1-50 | O | 1 | Specifies additional information on the Victim Type. | |
| | <SequenceNum> | <Victim> | E | S | 10 | M | 1 | Specifies the unique sequence number for the victim in the incident. | |
| | <FirstName> | <Victim> | E | S | 1-50 | R/A | 1 | Indicates the Victim's First Name. | |
| | <MiddleName> | <Victim> | E | S | 1-50 | O | 1 | Indicates the Victim's Middle Name. | |

| | | | | | | | |
|---------------------------|----------|---|-----|-------|-----|---|---|
| <LastName> | <Victim> | E | S | 1-50 | R/A | 1 | Indicates the Victim's Last Name. |
| <Alias> | <Victim> | E | S | 1-100 | O | 1 | Indicates the Victim's other name (Alias), if any. |
| <Occupation> | <Victim> | E | S | 1-50 | O | 1 | Indicates the Victim's Occupation. |
| <CellPhoneNum> | <Victim> | E | S | 10 | O | 1 | Indicates the Victim's Cell Phone Number. |
| <HomePhoneNum> | <Victim> | E | S | 10 | O | 1 | Indicates the Victim's Home Phone Number. |
| <PagerPhoneNum> | <Victim> | E | S | 10 | O | 1 | Indicates the Victim's Pager Number. |
| <Email> | <Victim> | E | S | 1-100 | O | 1 | Specifies the e-mail address of the Victim. |
| <SSNum> | <Victim> | E | S | 9 | O | 1 | Specifies the Social Security Number of the Victim. |
| <DateOfBirth> | <Victim> | E | D/T | | O | 1 | Specifies the Victim's Date of Birth. |
| <AgeClass> | <Victim> | E | S | 1 | O | 1 | Indicates the Age category of the Victim. A-Adult, J-Juvenile, U-Unknown |
| <Age> (8:26) | <Victim> | E | S | 2 | O | 1 | Indicates the Age of the Victim. |
| <AgeMax> | <Victim> | E | S | 2 | O | 1 | Specifies the Age range of Victim. Used along with the <Age> tag. |
| <Sex> (8:27) | <Victim> | E | S | 1 | R/A | 1 | Specifies a SIBRS code value that represents the Sex of the Victim. |
| <Race> (9:28) | <Victim> | E | S | 1 | R/A | 1 | Specifies a SIBRS code value that represents the Race of the Victim. |
| <HairColor> (9:61) | <Victim> | E | S | 3 | O | 1 | Specifies a SIBRS code value that represents the Hair Color of the Victim. |
| <EyeColor> (9:62) | <Victim> | E | S | 3 | O | 1 | Specifies a SIBRS code value that represents the Eye Color of the Victim. |
| <HeightFt> | <Victim> | E | N | 1 | O | 1 | Specifies the Height of the Victim (feet part). |
| <HeightIn> | <Victim> | E | N | 2 | O | 1 | Specifies the Height of the Victim (Inches part). |
| <HeightFtMax> | <Victim> | E | N | 1 | O | 1 | Specifies the Height Range of the victim (feet part). Used along with the <HeightFt > tag. |
| <HeightInMax> | <Victim> | E | N | 2 | O | 1 | Specifies the Height Range of the victim (inches part). Used along with the <HeightIn> tag. |
| <Weight> | <Victim> | E | N | 3 | O | 1 | Specifies the Weight of the Victim. |
| <WeightMax> | <Victim> | E | N | 3 | O | 1 | Specifies the Weight Range of the Victim. Used along with <Weight> tag. |
| <MaritalStatus> (10:63) | <Victim> | E | S | 1 | O | 1 | Specifies a SIBRS code value that represents the Marital Status of the Victim. |
| <ResidentStatus> (10:30) | <Victim> | E | S | 1 | O | 1 | Specifies a SIBRS code value that represents the Resident Status of the Victim. |
| <OtherResidentStatusDesc> | <Victim> | E | S | 1-100 | O | 1 | Indicates additional information of the Victim's Residential Status. |
| <PlaceOfBirth> | <Victim> | E | S | 1-100 | O | 1 | Indicates the Victim's Place of Birth. |
| <DriversLicenseNum> | <Victim> | E | S | 1-30 | O | 1 | Indicates the Victim's Driver License Number. |
| <DriversLicenseState> | <Victim> | E | S | 2 | O | 1 | Indicates the Victim's Driver License issuing state. |

| | | | | | | | | |
|-------|----------------------------|---------------|---|---|-------|-----|---|---|
| | <Ethnicity> (10:29) | <Victim> | E | S | 1 | O | 1 | Specifies the value that represents the Ethnicity of the Victim. |
| | <FBI Num> | <Victim> | E | S | 1-12 | O | 1 | Specifies the FBI Number related to the Victim. |
| | <OSBI Num> | <Victim> | E | S | 1-12 | O | 1 | Specifies the OSBI Number related to the Victim. |
| | <UnderInfluence> (10:64) | <Victim> | E | N | 1 | O | 1 | Indicates whether the Victim was under influence. |
| | <Handicap> (11:65) | <Victim> | E | N | 1 | O | 1 | Indicates whether the victim was handicapped. |
| | <IsLEOKA> (11:25) | <Victim> | E | N | 1 | R/A | 1 | Indicates whether the victim was an officer. |
| | <OfficerKilled> (11:66) | <Victim> | E | N | 1 | R/A | 1 | Indicates whether the Victim was an officer and killed. |
| | <CallType> (11:25A) | <Victim> | E | S | 2 | R/A | 1 | Specifies a SIBRS code value that represents the Type of Call in which the officer was involved. Applicable only if the Victim is an officer. |
| | <JustHomCirc> (12:32) | <Victim> | E | S | 1 | R/A | 1 | Additional Justifiable Assault/Homicide Circumstance information. |
| | <TypeOfAssignment>(12:25B) | <Victim> | E | S | 1 | R/A | 1 | Specifies a SIBRS code value that represents the Type of Assignment the officer had. Applicable only if the Victim is an officer. |
| | <VestWorn> (12:67) | <Victim> | E | N | 1 | R/A | 1 | Indicates whether the officer was wearing a Vest. Applicable only if the Victim is an officer. |
| | <LEOKA_ORI> | <Victim> | E | S | 1-20 | R/A | 1 | Indicates the Officer's agency Number. Applicable only if the Victim is an officer. |
| | <WeaponOwnership> (12:68) | <Victim> | E | N | 1 | R/A | 1 | Indicates whether weapon is Officer's or Suspect's. |
| | <LocationOfInjury> (12:69) | <Victim> | E | S | 3 | O | 5 | Indicates the Victim's injury location. Specifies a SIBRS code value that represents the body location of the injury occurred. |
| 4.1 | <HomeAddress> | <Victim> | | | | | 7 | Marks the Start of the Victim's Home Address |
| 4.1.1 | <Address> | <HomeAddress> | | | | | 1 | |
| | <CareOfLine> | <Address> | E | S | 1-100 | O | 1 | Specifies the Area location such as Residential, Business, etc... |
| | <StreetName> | <Address> | E | S | 1-100 | O | 1 | Specifies the Street Address (number and name) of the Victim's Residence. |
| | <UnitNum> | <Address> | E | S | 1-10 | O | 1 | Specifies the Suite / Apartment Number of the Victim's Residence. |
| | <City> | <Address> | E | S | 1-50 | O | 1 | Specifies the City, of the Victim's Residence. |
| | <State> | <Address> | E | S | 2 | O | 1 | Specifies the State of the Victim's Residence. |
| | <Zip> | <Address> | E | S | 5-10 | O | 1 | Specifies the Zip Code of the Victim's Residence. |
| 4.2 | <Employer> | <Victim> | | | | | 7 | Marks the Start of the Victim's Employer information |
| | <Name> | <Employer> | E | S | 1-100 | O | 1 | Specifies the Name of the Victim's Employer. |
| | <PhoneNum> | <Employer> | E | S | 10 | O | 1 | Specifies the Phone Number of the Victim's Employer. |
| | <PhoneExt> | <Employer> | E | S | 5 | O | 1 | Specifies the Phone Number Extension of the Victim's Employer. |
| 4.2.1 | <Address> | <Employer> | | | | | | |
| | <CareOfLine> | <Address> | E | S | 1-100 | O | 1 | Specifies the Area location such as Residential, Business, etc... |
| | <StreetName> | <Address> | E | S | 1-100 | O | 1 | Specifies the Street Address (number and name) of the Victim's Business Address. |

| | | | | | | | | |
|-----|--------------------------------|---------------------|--|----|------|-----|---|--|
| | <UnitNum> | <Address> | E | S | 1-10 | O | 1 | Specifies the Suite / Apartment Number of the Victim's Business Address. |
| | <City> | <Address> | E | S | 1-50 | O | 1 | Specifies the City of the Victim's Business Address. |
| | <State> | <Address> | E | S | 2 | O | 1 | Specifies the State of the Victim's Business Address. |
| | <Zip> | <Address> | E | S | 5-10 | O | 1 | Specifies the Zip Code of the Victim's Business Address. |
| 4.3 | <AggAssaultHomCirc> | <Victim> | <i>Multiple Occurrences & Conditionally Required</i> | | | | | <i>Marks the Start of Aggravated Assault Information.</i> |
| | Num | <AggAssaultHomCirc> | A | ID | | R/A | | Enumerates the Aggravated Assault/Homicide Circumstance information. |
| | <AggAssaultHomCirc> (13:31) | <AggAssaultHomCirc> | E | S | 2 | R/A | 5 | Specifies a SIBRS value that represents the Aggravated Assault Homicide Circumstances. |
| | <Injury> (14:33) | <Victim> | E | S | 1 | R/A | 9 | Specifies a NIBRS code value that represents injury type. |

| Offense Segment | | | | | | | | |
|-----------------|----------------------------|-----------------|----------------------|----|----|-----|---|--|
| Ser-Num | XML Tag | Parent Tag Name | E/A | | | | | Type |
| 5 | <Offense> | <Incident> | Multiple Occurrences | | | | | Marks the Start of the Offense Segment of the Incident. |
| | ID | <Offense> | A | ID | | M | | Specifies the system Identification number for the offense. |
| | <Code> (14:6) | <Offense> | E | S | 3 | M | 1 | Specifies a SIBRS code value that represents the offense code. |
| | <Completed> (18:7) | <Offense> | E | N | 1 | M | 1 | Indicates whether the offense has been attempted or completed. |
| | <HateBias> (18:8A) | <Offense> | E | S | 2 | R/A | 1 | Specifies a SIBRS code that represents the Hate Bias Code. Required if offense is a Hate Bias offense. |
| | <UsingAlcohol> (19:8) | <Offense> | E | N | 1 | O | 1 | Indicates whether the Offense was committed under Alcohol's influence. |
| | <UsingDrugs> (19:8) | <Offense> | E | N | 1 | O | 1 | Indicates whether the offense was committed under Drug's influence. |
| | <UsingComputer> (19:8) | <Offense> | E | N | 1 | O | 1 | Indicates whether the offense was committed using a computer. |
| | <NumPremisesEntered> | <Offense> | E | N | 2 | M | 1 | Specifies the number of premises entered. A value between 0 up to 99 is valid. |
| | <ForcedEntry> (19:11) | <Offense> | E | N | 1 | R/A | 1 | Indicates whether the offense was committed using Force or not. |
| | <SequenceNum> | <Offense> | E | S | 10 | M | 1 | Specifies the unique sequence number for the Offense in the incident. |
| | <PremisesInhabited> (19:9) | <Offense> | E | S | 2 | O | 1 | Specifies a SIBRS Code that represents the Premise Type of the Offense. |
| | <WeaponsUsed> (21:13) | <Offense> | E | S | 3 | O | 3 | Specifies a SIBRS Code that represents the Weapons involved in committing the Offense. |

| | | | | | | | | |
|-----|------------------------|-----------------|----------------------|-------|-------|-----|---|--|
| | <ActivityType> (21:12) | <Offense> | E | S | 1 | O | 3 | Specifies a SIBRS Code that represents the Activity type. |
| 5.1 | <Location> | <Offense> | | | | | 1 | Specifies the location of the Offense |
| | <CareOfLine> | <Location> | E | S | 1-100 | O | 1 | Specifies the Area location such as Residential, Business, etc... |
| | <StreetName> | <Location> | E | S | 1-100 | R/A | 1 | Specifies the Street Address (number and name) where the Offense occurred. |
| | <UnitNum> | <Location> | E | S | 1-10 | O | 1 | Specifies the Suite / Apartment Number of the location. |
| | <City> | <Location> | E | S | 1-50 | R/A | 1 | Specifies the City where the Offense occurred. |
| | <State> | <Location> | E | S | 2 | R/A | 1 | Specifies the State where the Offense occurred. |
| | <Zip> | <Location> | E | S | 5-10 | R/A | 1 | Specifies the Zip Code where the Offense occurred. |
| | <Street> | <Location> | E | S | 1-100 | O | 1 | Specifies the Street where the Offense occurred. |
| | <Distance> | <Location> | E | Float | | O | 1 | Specifies the Distance |
| | <DistanceUM> | <Location> | E | S | 1-20 | O | 1 | Specifies the Distance Units of Measure |
| | <Geo1> | <Location> | E | S | 1-100 | O | 1 | Specifies the Geographical location where the offense occurred. |
| 6 | <VictimOffense> | <Incident> | Multiple Occurrences | | | | Specifies the relationship between the Victim and Offense | |
| | Victim | <VictimOffense> | A | IDREF | | M | 1 | Specifies the Victim ID (refer to the "ID" attribute in victim). |
| | Offense | <VictimOffense> | A | IDREF | | M | 1 | Specifies the Offense ID (refer to the "ID" attribute in offense). |

| Suspect/Arrestee Segment | | | | | | | | |
|--------------------------|--------------------------------|-------------------|----------------------|----|-------|-----|---|--|
| Ser-Num | XML Tag | Parent Tag Name | E/A | | | | Type | |
| 7 | <SuspectArrestee> | <Incident> | Multiple Occurrences | | | | Marks the Start of the Suspect/Arrestee Segment of the Incident | |
| | ID | <SuspectArrestee> | A | ID | | M | | Specifies the system Identification number for the Suspect/Arrestee. |
| | <SuspectArresteeType> (22:75) | <SuspectArrestee> | E | S | 1 | M | 1 | Specifies a SIBRS code value that represents the type of Suspect/Arrestee. |
| | <SuspectArresteeOtherTypeDesc> | <SuspectArrestee> | E | S | 1-50 | O | 1 | Specifies additional information on the Suspect/Arrestee Type. |
| | <SequenceNum> | <SuspectArrestee> | E | S | 10 | M | 1 | Specifies the unique sequence number for the Suspect/Arrestee in the incident. "00" should be used if the Suspect/Arrestee is unknown. |
| | <FirstName> | <SuspectArrestee> | E | S | 1-50 | R/A | 1 | Indicates the Suspect/Arrestee's First Name. |
| | <MiddleName> | <SuspectArrestee> | E | S | 1-50 | O | 1 | Indicates the Suspect/Arrestee's Middle Name. |
| | <LastName> | <SuspectArrestee> | E | S | 1-50 | R/A | 1 | Indicates the Suspect/Arrestee's Last Name. "Unknown" may be used. |
| | <Alias> | <SuspectArrestee> | E | S | 1-100 | O | 1 | Indicates the Suspect/Arrestee's other name (Alias), if any. |

| | | | | | | | |
|---------------------------|-------------------|---|-----|-------|-----|---|---|
| <Occupation> | <SuspectArrestee> | E | S | 1-50 | O | 1 | Indicates the Suspect/Arrestee's Occupation. |
| <CellPhoneNum> | <SuspectArrestee> | E | S | 10 | O | 1 | Indicates the Suspect/Arrestee's Cell Phone Number. |
| <HomePhoneNum> | <SuspectArrestee> | E | S | 10 | O | 1 | Indicates the Suspect/Arrestee's Home Phone Number. |
| <PagerPhoneNum> | <SuspectArrestee> | E | S | 10 | O | 1 | Indicates the Suspect/Arrestee's Pager Number. |
| <Email> | <SuspectArrestee> | E | S | 1-100 | O | 1 | Specifies the e-mail address of the Suspect/Arrestee. |
| <SSNum> | <SuspectArrestee> | E | S | 9 | O | 1 | Specifies the Social Security Number of the Suspect/Arrestee. |
| <DateOfBirth> | <SuspectArrestee> | E | D/T | | O | 1 | Specifies the Suspect/Arrestee's Date of Birth. |
| <AgeClass> (22:70) | <SuspectArrestee> | E | S | 1 | M | 1 | Indicates the Age category of the Suspect/Arrestee. A-Adult, J-Juvenile, U-Unknown |
| <Age> | <SuspectArrestee> | E | S | 2 | R/A | 1 | Indicates the Age of the Suspect/Arrestee. |
| <AgeMax> | <SuspectArrestee> | E | S | 2 | R/A | 1 | Specifies the Age range of Suspect/Arrestee. Used along with the <Age> tag if exact age is unknown. |
| <Sex> (22:38) | <SuspectArrestee> | E | S | 1 | R/A | 1 | Specifies a SIBRS code value that represents the Sex of the Suspect/Arrestee. |
| <Race> (23:39) | <SuspectArrestee> | E | S | 1 | R/A | 1 | Specifies a SIBRS code value that represents the Race of the Suspect/Arrestee. |
| <HairColor> (23:71) | <SuspectArrestee> | E | S | 3 | O | 1 | Specifies a SIBRS code value that represents the Hair Color of the Suspect/Arrestee. |
| <EyeColor> (23:72) | <SuspectArrestee> | E | S | 3 | O | 1 | Specifies a SIBRS code value that represents the Eye Color of the Suspect/Arrestee. |
| <HeightFt> | <SuspectArrestee> | E | N | 1 | O | 1 | Specifies the Height of the Suspect/Arrestee (feet part). |
| <HeightIn> | <SuspectArrestee> | E | N | 2 | O | 1 | Specifies the Height of the Suspect/Arrestee (Inches part). |
| <HeightFtMax> | <SuspectArrestee> | E | N | 1 | O | 1 | Specifies the Height Range of the Suspect/Arrestee (feet part). Used along with the <HeightFt > tag. |
| <HeightInMax> | <SuspectArrestee> | E | N | 2 | O | 1 | Specifies the Height Range of the Suspect/Arrestee (inches part). Used along with the <HeightIn> tag. |
| <Weight> | <SuspectArrestee> | E | N | 3 | O | 1 | Specifies the Weight of the Suspect/Arrestee. |
| <WeightMax> | <SuspectArrestee> | E | N | 3 | O | 1 | Specifies the Weight Range of the Suspect/Arrestee. Used along with <Weight> tag. |
| <MaritalStatus> (24:73) | <SuspectArrestee> | E | S | 1 | O | 1 | Specifies a SIBRS code value that represents the Marital Status of the Suspect/Arrestee. |
| <ResidentStatus> (24:51) | <SuspectArrestee> | E | S | 1 | O | 1 | Specifies a SIBRS code value that represents the Resident Status of the Suspect/Arrestee. |
| <OtherResidentStatusDesc> | <SuspectArrestee> | E | S | 1-100 | O | 1 | Indicates the Suspect/Arrestee's Residential Status. |
| <PlaceOfBirth> | <SuspectArrestee> | E | S | 1-100 | O | 1 | Indicates the Suspect/Arrestee's Place of Birth. |
| <DriversLicenseNum> | <SuspectArrestee> | E | S | 1-30 | O | 1 | Indicates the Suspect/Arrestee's Driver License Number. |
| <DriversLicenseState> | <SuspectArrestee> | E | S | 2 | O | 1 | Indicates the Suspect/Arrestee's Driver License issuing state. |

| | | | | | | | | | |
|-----|-------------------------------|-------------------|--|-----|-------|-----|--|--|--|
| | <ChargesFiled> | <SuspectArrestee> | E | N | 1 | O | 1 | Indicates whether Charges has been filed for the Suspect/Arrestee. | |
| | <GangAffiliation> | <SuspectArrestee> | E | S | 1-100 | O | 1 | Specifies any Gang affiliation details. | |
| | <FBI Num> | <SuspectArrestee> | E | S | 1-12 | O | 1 | Specifies the FBI Number related to the Suspect/Arrestee. | |
| | <OSBI Num> | <SuspectArrestee> | E | S | 1-12 | O | 1 | Specifies the OSBI Number related to the Suspect/Arrestee. | |
| | <GuardianNotified> | <SuspectArrestee> | E | N | 1 | O | 1 | Indicates whether any Guardian Notified. | |
| | <GuardianNotifiedOn> | <SuspectArrestee> | E | D/T | | O | 1 | Specifies the date/time the guardian was notified. | |
| | <GuardianNotifiedBy> | <SuspectArrestee> | E | S | 1-100 | O | 1 | Indicates the mode of Notification of the Guardian. | |
| | <JuvenileDisposition> (24:52) | <SuspectArrestee> | E | S | 1 | R/A | 1 | Specifies a SIBRS code value that represents the Juvenile Disposition. | |
| | <Ethnicity> (24:50) | <SuspectArrestee> | E | S | 1 | O | 1 | Specifies a SIBRS code value that represents the Ethnicity of the Victim. | |
| | <LocalIDNum> | <SuspectArrestee> | E | S | 1-50 | O | 1 | Specifies the Local Identification Number | |
| | <ArmedWith> (24:46) | <SuspectArrestee> | E | S | 3 | R/A | 2 | Specifies a SIBRS Code value that represents the weapons used by the Arrestee | |
| | <ScarEtc> (25:74) | <SuspectArrestee> | E | S | 1-20 | O | 5 | Specifies a SIBRS Code value that represents the physical Identifying marks of the Suspect/Arrestee. | |
| 7.1 | <Warrant> | <SuspectArrestee> | <i>Multiple Occurrences & Optional</i> | | | | <i>Specifies the Warrant details for the Suspect/Arrestee</i> | | |
| | <WarrantNum> | <Warrant> | E | S | 12 | M | 1 | Specifies the Citation/Warrant Number for the Suspect/Arrestee. | |
| 7.2 | <Address> | <SuspectArrestee> | | | | | <i>1</i> <i>Species the Address of the Suspect / Arrestee</i> | | |
| | <StreetName> | <Address> | E | S | 1-100 | O | 1 | Specifies the Street Address (number and name) of the Suspect/Arrestee's Residence. | |
| | <UnitNum> | <Address> | E | S | 1-10 | O | 1 | Specifies the Suite / Apartment Number of the Suspect/Arrestee's Residence. | |
| | <City> | <Address> | E | S | 1-50 | O | 1 | Specifies the City, of the Suspect/Arrestee's Residence. | |
| | <State> | <Address> | E | S | 2 | O | 1 | Specifies the State of the Suspect/Arrestee's Residence. | |
| | <Zip> | <Address> | E | S | 5-10 | O | 1 | Specifies the Zip Code of the Suspect/Arrestee's Residence. | |
| 7.3 | <Employer> | <SuspectArrestee> | | | | | <i>1</i> <i>Specifies the occupation Details of the Suspect/Arrestee.</i> | | |
| | <Name> | <Employer> | E | S | 1-100 | O | 1 | Specifies the Name of the Suspect/Arrestee's Employer . | |
| | <PhoneNum> | <Employer> | E | S | 10 | O | 1 | Specifies the Phone Number of the Suspect/Arrestee's Employer. | |
| | <PhoneExt> | <Employer> | E | S | 5 | O | 1 | Specifies the Phone Number Extension of the Suspect/Arrestee's Employer. | |
| | <Address> | <Employer> | | | | | | | |
| | <StreetName> | <Address> | E | S | 1-100 | O | 1 | Specifies the Street Address (number and name) of the Suspect/Arrestee's Employer. | |
| | <UnitNum> | <Address> | E | S | 1-10 | O | 1 | Specifies the Suite / Apartment Number of the Suspect/Arrestee's Employer. | |
| | <City> | <Address> | E | S | 1-50 | O | 1 | Specifies the City, of the Suspect/Arrestee's Employer. | |

| | | | | | | | | | |
|-------|--------------------------|--------------------------|---|-------|-------|-----|---|--|--|
| | <State> | <Address> | E | S | 2 | O | 1 | Specifies the State of the Suspect/Arrestee's Employer. | |
| | <Zip> | <Address> | E | S | 5-10 | O | 1 | Specifies the Zip Code of the Suspect/Arrestee's Employer. | |
| 7.4 | <Arrest> | <SuspectArrestee> | | | | | | Specifies Arrest information of the Arrestee. | |
| | <ArrestedOn> | <Arrest> | E | D/T | | O | 1 | Specifies the date/time on which the Arrest was made. | |
| | <IncidentTrackingNum> | <Arrest> | E | S | 1-12 | M | 1 | Specifies the Arrest Tracking Number/Booking Number. | |
| | <Bail> | <Arrest> | E | N | 12.2 | O | 1 | Specifies the Bail Amount | |
| | <CardNum> | <Arrest> | E | S | 20 | O | 1 | Specifies the Arrest's Fingerprint Card number. | |
| | <MultipleArrest> (52:44) | <Arrest> | E | S | 1 | R/A | 1 | Indicates whether Multiple Case arrests made or not. | |
| | <ArrestType> (52:43) | <Arrest> | E | S | 1 | M | 1 | Specifies a SIBRS Code that represents the Arrest Type. | |
| | <Charges> | <Arrest> | E | S | 1-100 | O | 1 | Specifies the detail about the charges made for the arrest. | |
| | <BookedWhere> | <Arrest> | E | S | 1-50 | O | 1 | Specifies the location where suspect/Arrestee is booked. | |
| 7.4.1 | <Location> | <Arrest> | | | | | | 1 | Specifies the Arrest Location Details |
| | <StreetName> | <Location> | E | S | 1-100 | O | 1 | Specifies the Street Address (number and name) of the Arrest. | |
| | <UnitNum> | <Location> | E | S | 1-10 | O | 1 | Specifies the Suite / Apartment Number of the Arrest. | |
| | <City> | <Location> | E | S | 1-50 | O | 1 | Specifies the City of the Arrest. | |
| | <State> | <Location> | E | S | 2 | O | 1 | Specifies the State of the Arrest. | |
| | <Zip> | <Location> | E | S | 5-10 | O | 1 | Specifies the Zip Code of the Arrest. | |
| | <Street> | <Location> | E | S | 1-100 | O | 1 | Specifies the Street of the Arrest. | |
| 7.4.2 | <ArrestOffense> | <Arrest> | Multiple Occurrences & Conditionally Required | | | | | 1 | Specifies the Offense for which the arrest was made. |
| | <OffenseCode> (14:6) | <ArrestOffense> | E | S | 3 | M | 1 | Specifies a SIBRS Code that represents the Offense code on which the arrest was made | |
| 8 | <SuspectArresteeOffense> | <Incident> | Multiple Occurrences | | | | | | Specifies the relationship between the Suspect and Offense |
| | SuspectArrestee | <SuspectArresteeOffense> | A | IDREF | | M | 1 | Specifies the Suspect/Arrestee ID (refer to the "ID" attribute in SuspectArrestee). | |
| | Offense | <SuspectArresteeOffense> | A | IDREF | | M | 1 | Specifies the Offense ID (refer to the "ID" attribute in offense). | |
| | | | | | | | | | |
| 9 | <VictimizedBy> | <Incident> | Multiple Occurrences & Conditionally Required | | | | | | Specifies the relationship between the Victim and Suspect |
| | Suspect | <VictimizedBy> | A | IDREF | | M | 1 | Specifies the Suspect/Arrestee ID (refer to the "ID" attribute in SuspectArrestee). | |
| | Victim | <VictimizedBy> | A | IDREF | | M | 1 | Specifies the Victim ID (refer to the "ID" attribute in Victim). | |
| | Relation (52:35) | <VictimizedBy> | E | S | 2 | M | 1 | Specifies the SIBRS Relationship code between Victim and Suspect. | |
| 10 | <Guardian> | <Incident> | Multiple Occurrences & Optional | | | | | | Specifies the Guardian Details |
| | RelatedTo | <Guardian> | A | IDREF | | M | 1 | Specifies the Related To Information. | |
| | Relation (53:76) | <Guardian> | A | S | 2 | M | 1 | Specifies the Relation details. | |

| | | | | | | | | | |
|------|----------------------|------------|---|-----|-------|---|---|---|--|
| | <SequenceNum> | <Guardian> | E | S | 10 | M | 1 | Specifies the unique sequence number for the guardian in the incident. | |
| | <FirstName> | <Guardian> | E | S | 1-50 | O | 1 | Indicates the Guardian's First Name. | |
| | <MiddleName> | <Guardian> | E | S | 1-50 | O | 1 | Indicates the Guardian's Middle Name. | |
| | <LastName> | <Guardian> | E | S | 1-50 | O | 1 | Indicates the Guardian's Last Name. | |
| | <GuardianNotified> | <Guardian> | E | N | 1 | O | 1 | Indicates whether the guardian was notified. | |
| | <GuardianNotifiedOn> | <Guardian> | E | D/T | | O | 1 | Specifies the date/time the guardian was notified. | |
| | <GuardianNotifiedBy> | <Guardian> | E | S | 1-100 | O | 1 | Specifies the Mode of notification to the guardian. | |
| 10.1 | <Address> | <Guardian> | | | | | | | |
| | <StreetName> | <Address> | E | S | 1-100 | O | 1 | Specifies the Street Address (number and name) of the Guardian's Address. | |
| | <UnitNum> | <Address> | E | S | 1-10 | O | 1 | Specifies the Suite / Apartment Number of the Guardian's Address. | |
| | <City> | <Address> | E | S | 1-50 | O | 1 | Specifies the City of the Guardian's Address. | |
| | <State> | <Address> | E | S | 2 | O | 1 | Specifies the State of the Guardian's Address. | |
| | <Zip> | <Address> | E | S | 5-10 | O | 1 | Specifies the Zip Code of the Guardian's Address. | |

| Narrative Segment | | | | | | | | |
|-------------------|--------------|-----------------|---------------------------------|-----|------|---|---|--|
| Ser-Num | XML Tag | Parent Tag Name | E/A | | | | | Type |
| 11 | <Narrative> | <Incident> | Multiple Occurrences & Optional | | | | | |
| | <OfficerNum> | <Narrative> | E | S | 1-10 | M | 1 | Specifies the Officer Number entering the Narrative. |
| | <EnteredOn> | <Narrative> | E | D/T | | M | 1 | Specifies the date/time the Narrative was entered. |
| | <Content> | <Narrative> | E | S | | M | 1 | Specifies the Narrative Description |

| Vehicle Segment | | | | | | | | |
|-----------------|-----------------|-----------------|---|-------|----|---|---|---|
| Ser-Num | XML Tag | Parent Tag Name | E/A | | | | | Type |
| 12 | <Vehicle> | <Incident> | Multiple Occurrences & Conditionally Required | | | | | |
| | Id | <Vehicle> | A | ID | | M | | Specifies unique identification number of the vehicle. |
| | Victim | <Vehicle> | A | IDREF | | M | | Specifies the Victim ID (refer "ID" attribute in Victim). |
| | SuspectArrestee | <Vehicle> | A | IDREF | | M | | Specifies the Suspect/Arrestee ID (refer to the "ID" attribute in SuspectArrestee). |
| | <SequenceNum> | <Vehicle> | E | S | 10 | M | 1 | Specifies unique sequence number of the vehicle in the incident. |

| | | | | | | | |
|----------------------------|-----------|---|---|-------|-----|---|---|
| <PlateNum> | <Vehicle> | E | S | 1-10 | O | 1 | Specifies the Plate Number of the Vehicle. |
| <PlateState> | <Vehicle> | E | S | 2 | O | 1 | Specifies the Plate State of the Vehicle. |
| <PlateMonth> | <Vehicle> | E | N | 1-10 | O | 1 | Specifies the Plate Month of the Vehicle. |
| <PlateYear> | <Vehicle> | E | N | 1-10 | O | 1 | Specifies the Plate year of the Vehicle. |
| <PlateType> (54:77) | <Vehicle> | E | S | 2 | O | 1 | Specifies the Plate Type of the Vehicle. |
| <IsStolen> (56:78) | <Vehicle> | E | N | 1 | R/A | 1 | Indicates whether the Vehicle is Stolen. A value of "1" must be entered if reporting stolen vehicle. |
| <IsRecovered> (56:78) | <Vehicle> | E | N | 1 | R/A | 1 | Indicates whether the Vehicle is recovered. A value of "1" must be entered if reporting recovered vehicle. |
| <IsImpounded> (56:78) | <Vehicle> | E | N | 1 | O | 1 | Indicates whether the Vehicle is impounded. A value of "1" must be entered if reporting impounded vehicle. |
| <IsReceived> (56:78) | <Vehicle> | E | N | 1 | O | 1 | Do not utilize this tag until further notice. |
| <TheftFrom> (56:78) | <Vehicle> | E | N | 1 | O | 1 | Indicates when property is stolen from a motor vehicle. A value of "1" must be entered if reporting theft from vehicle. |
| <IsOther> (56:78) | <Vehicle> | E | N | 1 | O | 1 | Indicates whether the Vehicle is other. A value of "1" must be entered if reporting other vehicle. |
| <VehTypeOtherDesc> | <Vehicle> | E | S | 1-100 | O | 1 | Indicates additional description when vehicle type "Other" is reported. |
| <IsSuspect> (56:78) | <Vehicle> | E | N | 1 | O | 1 | Indicates whether the Vehicle is owned by the suspect. A value of "1" must be entered if reporting suspect's vehicle. |
| <IsVictim> (56:78) | <Vehicle> | E | N | 1 | O | 1 | Indicates whether the Vehicle is owned by the victim. A value of "1" must be entered if reporting victim's vehicle. |
| <IsUnauthorizedUse>(56:78) | <Vehicle> | E | N | 1 | O | 1 | Do not utilize this tag until further notice. |
| <IsAbandoned> (56:78) | <Vehicle> | E | N | 1 | O | 1 | Do not utilize this tag until further notice. |
| <IsSeized> (56:78) | <Vehicle> | E | N | 1 | O | 1 | Specifies whether the Vehicle is seized. A value of "1" must be entered if reporting seized vehicle. |
| <IsVandalized> (56:78) | <Vehicle> | E | N | 1 | O | 1 | Specifies whether the vehicle is vandalized. A value of "1" must be entered if reporting vandalized vehicle. |
| <Make> | <Vehicle> | E | S | 1-50 | O | 1 | Indicates the Make of the Vehicle. |
| <Model> | <Vehicle> | E | S | 1-50 | O | 1 | Indicates the Model of the Vehicle. |
| <Year> | <Vehicle> | E | N | 10 | O | 1 | Indicates the Year of the Vehicle Make. |
| <Style> | <Vehicle> | E | S | 1-50 | O | 1 | Indicates the Style of the Vehicle. |
| <TopColor> (56:79) | <Vehicle> | E | S | 3 | O | 1 | Indicates the Top Color of the Vehicle. |
| <BottomColor> (56:79) | <Vehicle> | E | S | 3 | O | 1 | Indicates the Bottom Color of the Vehicle. |
| <Comments> | <Vehicle> | E | S | 1-500 | O | 1 | Specifies any additional information about the Stolen Vehicle |
| <VINOAN> | <Vehicle> | E | S | 1-50 | O | 1 | Specifies the VIN Number of the Vehicle. |
| <NCICNum> | <Vehicle> | E | S | 1-50 | O | 1 | Specifies the NCIC Number of the Vehicle. |

| | | | | | | | |
|---|-----------|---|-------|-------|---|---|---|
| <Value> | <Vehicle> | E | N | 9 | O | 1 | Specifies the Value of the Vehicle. |
| <TowedBy> | <Vehicle> | E | S | 1-100 | O | 1 | Specifies the Towed By Details |
| <AreaStolen> (57:80) | <Vehicle> | E | S | 1 | O | 1 | Specifies the Area where the Vehicle is Stolen. |
| <StolenInOfficersJurisdiction> (58:81) | <Vehicle> | E | N | 1 | O | 1 | Indicates whether the vehicle is stolen in the Officer's jurisdiction. |
| <RecoveredInYourJuri> (58:82) | <Vehicle> | E | N | 1 | O | 1 | Indicates whether the vehicle is recovered in the Officer's jurisdiction. |
| <RecoveredOn> | <Vehicle> | E | D/T | | O | 1 | Specifies the date/time the vehicle was recovered. |
| <PlaceRecovered> | <Vehicle> | E | S | 1-100 | O | 1 | Specifies the place the vehicle was recovered |
| <DistinguishingMarks> | <Vehicle> | E | S | 1-100 | O | 1 | Specifies additional distinguishing Marks of the Vehicle |
| <ImpoundedBy> | <Vehicle> | E | S | 1-20 | O | 1 | Specifies the Impounded by details. |
| <RecoveringAgencyORINum> | <Vehicle> | E | S | 9 | O | 1 | Specifies the recovering agency Number. |
| <RecoveredValue> | <Vehicle> | E | Float | | O | 1 | Specifies the value of the vehicle when recovered. |
| <TowedTo> | <Vehicle> | E | S | 1-100 | O | 1 | Specifies the place where the vehicle is towed to |
| <VehicleDECALNum> | <Vehicle> | E | S | 1-15 | O | 1 | Specifies the Vehicle DECAL Number |

| Property Segment | | | | | | | | |
|------------------|------------------------|-----------------|---|-------|-------|-----|--|---|
| Ser-Num | XML Tag | Parent Tag Name | E/A | | | | Type | |
| 13 | <Property> | <Incident> | Multiple Occurrences & Conditionally Required | | | | Marks the start of the Property Segment | |
| | Victim | <Property> | A | IDREF | | M | Specifies the Victim ID (refer to the "ID" attribute in Victim). | |
| | Vehicle | <Property> | A | IDREF | | M | Specifies the Vehicle ID (refer to the "ID" attribute in Vehicle). | |
| | Id | <Property> | A | ID | | M | Specifies the unique identification number of the property. | |
| | <SequenceNum> | <Property> | E | S | 10 | M | 1 | Specifies the unique sequence number of the property in the Incident |
| | <LossType> (58:14) | <Property> | E | S | 1 | M | 1 | Specifies a SIBRS code that represents the Loss type of the property. |
| | <PropertyType> (58:15) | <Property> | E | S | 4 | R/A | 1 | Specifies a SIBRS code that represents the Property type |
| | <DrugType> (63:20) | <Property> | E | S | 1 | R/A | 1 | Specifies a SIBRS code that represents the Drug Type |
| | <Comments> | <Property> | E | S | 1-500 | O | 1 | Specifies additional information of the property. |
| | <Quantity> | <Property> | E | N | 13.3 | R/A | 1 | Indicates the property quantity. |
| | <QuantityUM> (64:22) | <Property> | E | S | 2 | R/A | 1 | Indicates the property quantity Measurement unit. |
| | <Value> | <Property> | E | N | 9 | R/A | 1 | Specifies the property value. |
| | <MakeBrand> | <Property> | E | S | 1-50 | O | 1 | Specifies the Make/Brand details of the property. |
| | <Model> | <Property> | E | S | 1-50 | O | 1 | Specifies the Model of the property. |

| | | | | | | | | |
|----|----------------------|-------------------|---|-------|------|-----|---|--|
| | <SerialNum> | <Property> | E | S | 1-50 | O | 1 | Specifies the Property Serial Number |
| | <NCICEntryMade> | <Property> | E | N | 1 | O | 1 | Indicates whether a NCIC entry is made or not. |
| | <OwnerAppliedNumber> | <Property> | E | S | 1-20 | O | 1 | Specifies the owner-applied number for the property. |
| | <DateRecovered> | <Property> | E | D/T | | R/A | 1 | Specifies date the property was recovered. |
| 14 | <OffenseProperty> | <Incident> | Multiple Occurrences & Conditionally Required | | | | | Specifies the relationship between the property and the offense |
| | Offense | <OffenseProperty> | A | IDREF | | M | | Specifies the Offense ID (refer to the "ID" attribute in Offense). |
| | Property | <OffenseProperty> | A | IDREF | | M | | Specifies the Property ID (refer to the "ID" attribute in Property). |

| Reportee Segment | | | | | | | | |
|------------------|---------------------|-----------------|---------------------------------|-----|-------|---|---|--|
| Ser-Num | XML Tag | Parent Tag Name | E/A | | | | | Type |
| 15 | <Reportee> | <Incident> | Multiple Occurrences & Optional | | | | | Marks the start of the Reportee segment in the Incident |
| | <SequenceNum> | <Reportee> | E | S | 10 | M | 1 | Specifies the unique sequence number for the Reportee in the incident. |
| | <FirstName> | <Reportee> | E | S | 1-50 | O | 1 | Indicates the Reportee's First Name. |
| | <MiddleName> | <Reportee> | E | S | 1-50 | O | 1 | Indicates the Reportee's Middle Name. |
| | <LastName> | <Reportee> | E | S | 1-50 | O | 1 | Indicates the Reportee's Last Name. |
| | <CellPhoneNum> | <Reportee> | E | S | 10 | O | 1 | Indicates the Reportee's Cell Phone Number. |
| | <HomePhoneNum> | <Reportee> | E | S | 10 | O | 1 | Indicates the Reportee's Home Phone Number. |
| | <PagerPhoneNum> | <Reportee> | E | S | 10 | O | 1 | Indicates the Reportee's Pager Number. |
| | <Email> | <Reportee> | E | S | 1-100 | O | 1 | Specifies the e-mail address of the Reportee. |
| | <SSNum> | <Reportee> | E | S | 9 | O | 1 | Specifies the Social Security Number of the Reportee. |
| | <DateOfBirth> | <Reportee> | E | D/T | | O | 1 | Specifies the Reportee's Date of Birth. |
| | <AgeClass> | <Reportee> | E | S | 1-20 | O | 1 | Indicates the Age category of the Reportee. A-Adult, J-Juvenile, U-Unknown |
| | <Age> | <Reportee> | E | S | 2 | O | 1 | Indicates the Age of the Reportee. |
| | <AgeMax> | <Reportee> | E | S | 2 | O | 1 | Specifies the Age range of Reportee. Used along with the <Age> tag. |
| | <Sex> (65:83) | <Reportee> | E | S | 1 | O | 1 | Specifies the value that represents the Sex of the Reportee. |
| | <Race> (65:84) | <Reportee> | E | S | 1 | O | 1 | Specifies a SIBRS code value that represents the Race of the Reportee. |
| | <HairColor> (65:85) | <Reportee> | E | S | 3 | O | 1 | Specifies a SIBRS code value that represents the Hair Color of the Reportee. |
| | <EyeColor> (66:86) | <Reportee> | E | S | 3 | O | 1 | Specifies a SIBRS code value that represents the Eye Color of the Reportee. |

| | | | | | | | | | |
|------|---------------------------|------------|---|---|-------|---|---|---|--|
| | <HeightFt> | <Reportee> | E | N | 1 | O | 1 | Specifies the Height of the Reportee(feet part). | |
| | <HeightIn> | <Reportee> | E | N | 2 | O | 1 | Specifies the Height of the Reportee(Inches part). | |
| | <HeightFtMax> | <Reportee> | E | N | 1 | O | 1 | Specifies the Height Range of the Reportee (feet part). Used along with the <HeightFt > tag. | |
| | <HeightInMax> | <Reportee> | E | N | 2 | O | 1 | Specifies the Height Range of the Reportee (inches part). Used along with the <HeightIn> tag. | |
| | <Weight> | <Reportee> | E | N | 3 | O | 1 | Specifies the Weight of the Reportee. | |
| | <WeightMax> | <Reportee> | E | N | 3 | O | 1 | Specifies the Weight Range of the Reportee. Used along with <Weight> tag. | |
| | <MaritalStatus> (66:87) | <Reportee> | E | S | 1 | O | 1 | Specifies a SIBRS code value that represents the Marital Status of the Reportee. | |
| | <ResidentStatus> (66:88) | <Reportee> | E | S | 1 | O | 1 | Specifies a SIBRS code value that represents the Resident Status of the Reportee. | |
| | <OtherResidentStatusDesc> | <Reportee> | E | S | 1-100 | O | 1 | Indicates additional information of the Reportee's Residential Status. | |
| | <DriversLicenseNum> | <Reportee> | E | S | 1-30 | O | 1 | Indicates the Reportee's Driver License Number. | |
| | <DriversLicenseState> | <Reportee> | E | S | 2 | O | 1 | Indicates the Reportee's Driver License issuing state. | |
| | <Ethnicity> (66:89) | <Reportee> | E | S | 1 | O | 1 | Specifies a SIBRS code value that represents the Ethnicity of the Reportee. | |
| | <FBI Num> | <Victim> | E | S | 1-12 | O | 1 | Specifies the FBI Number related to the Reportee. | |
| | <OSBI Num> | <Victim> | E | S | 1-12 | O | 1 | Specifies the OSBI Number related to the Reportee. | |
| 15.1 | <Address> | <Reportee> | | | | | | 1 | Specifies the address of the Reportee |
| | <StreetName> | <Address> | E | S | 1-100 | O | 1 | Specifies the Street Address (number and name) of the Reportee's Address. | |
| | <UnitNum> | <Address> | E | S | 10 | O | 1 | Specifies the Suite / Apartment Number of the Reportee's Address. | |
| | <City> | <Address> | E | S | 1-50 | O | 1 | Specifies the City of the Reportee's Address. | |
| | <State> | <Address> | E | S | 2 | O | 1 | Specifies the State of the Reportee's Address. | |
| | <Zip> | <Address> | E | S | 5-10 | O | 1 | Specifies the Zip Code of the Reportee's Address. | |
| 15.2 | <Employer> | <Reportee> | | | | | | 1 | Specifies the address of the Reportee's Employer |
| | <Name> | <Employer> | E | S | 1-100 | O | 1 | Specifies the Name of the Reportee's Employer. | |
| | <PhoneNum> | <Employer> | E | S | 10 | O | 1 | Specifies the Phone Number of the Reportee's Employer. | |
| | <PhoneExt> | <Employer> | E | S | 5 | O | 1 | Specifies the Phone Number Extension of the Reportee's Employer. | |
| | <Address> | <Employer> | | | | | | | |
| | <StreetName> | <Address> | E | S | 1-100 | O | 1 | Specifies the Street Address (number and name) of the Reportee's Employer. | |
| | <UnitNum> | <Address> | E | S | 10 | O | 1 | Specifies the Suite / Apartment Number of the Reportee's Employer. | |
| | <City> | <Address> | E | S | 1-50 | O | 1 | Specifies the City, of the Reportee's Employer. | |
| | <State> | <Address> | E | S | 2 | O | 1 | Specifies the State of the Reportee's Employer. | |

| | | | | | | | |
|-------|-----------|---|---|------|---|---|--|
| <Zip> | <Address> | E | S | 5-10 | O | 1 | Specifies the Zip Code of the Reportee's Employer. |
|-------|-----------|---|---|------|---|---|--|

| Witness Segment | | | | | | | | |
|-----------------|---------------------|-----------------|---------------------------------|-----|-------|---|---|--|
| Ser-Num | XML Tag | Parent Tag Name | E/A | | | | | Type |
| 16 | <Witness> | <Incident> | Multiple Occurrences & Optional | | | | | |
| | <SequenceNum> | <Witness> | E | S | 10 | M | 1 | Specifies the unique sequence number for the Witness in the incident. |
| | <FirstName> | <Witness> | E | S | 1-50 | M | 1 | Indicates the Witness's First Name. |
| | <MiddleName> | <Witness> | E | S | 1-50 | O | 1 | Indicates the Witness's Middle Name. |
| | <LastName> | <Witness> | E | S | 1-50 | M | 1 | Indicates the Witness's Last Name. |
| | <CellPhoneNum> | <Witness> | E | S | 10 | O | 1 | Indicates the Witness's Cell Phone Number. |
| | <HomePhoneNum> | <Witness> | E | S | 10 | O | 1 | Indicates the Witness's Home Phone Number. |
| | <PagerPhoneNum> | <Witness> | E | S | 10 | O | 1 | Indicates the Witness's Pager Number. |
| | <Email> | <Witness> | E | S | 1-100 | O | 1 | Specifies the e-mail address of the Witness. |
| | <SSNum> | <Witness> | E | S | 9 | O | 1 | Specifies the Social Security Number of the Witness. |
| | <DateOfBirth> | <Witness> | E | D/T | | O | 1 | Specifies the Witness's Date of Birth. |
| | <AgeClass> | <Witness> | E | S | 1 | O | 1 | Indicates the Age category of the Witness. A-Adult, J-Juvenile, U-Unknown |
| | <Age> | <Witness> | E | S | 2 | O | 1 | Indicates the Age of the Witness. |
| | <AgeMax> | <Witness> | E | S | 2 | O | 1 | Specifies the Age range of Witness. Used along with the <Age> tag. |
| | <Sex> (65:83) | <Witness> | E | S | 1 | O | 1 | Specifies a SIBRS code value that represents the Sex of the Witness. |
| | <Race> (65:84) | <Witness> | E | S | 1 | O | 1 | Specifies a SIBRS code value that represents the Race of the Witness. |
| | <HairColor> (65:85) | <Witness> | E | S | 3 | O | 1 | Specifies a SIBRS code value that represents the Hair Color of the Witness. |
| | <EyeColor> (66:86) | <Witness> | E | S | 3 | O | 1 | Specifies a SIBRS code value that represents the Eye Color of the Witness. |
| | <HeightFt> | <Witness> | E | N | 1 | O | 1 | Specifies the Height of the Witness (feet part). |
| | <HeightIn> | <Witness> | E | N | 2 | O | 1 | Specifies the Height of the Witness (Inches part). |
| | <HeightFtMax> | <Witness> | E | N | 1 | O | 1 | Specifies the Height Range of the Witness (feet part). Used along with the <HeightFt > tag. |
| | <HeightInMax> | <Witness> | E | N | 2 | O | 1 | Specifies the Height Range of the Witness (inches part). Used along with the <HeightIn> tag. |

| | | | | | | | | | |
|------|---------------------------|------------|---|---|-------|---|---|--|--|
| | <Weight> | <Witness> | E | N | 3 | O | 1 | Specifies the Weight of the Witness. | |
| | <WeightMax> | <Witness> | E | N | 3 | O | 1 | Specifies the Weight Range of the Witness. Used along with <Weight> tag. | |
| | <MaritalStatus> (66:87) | <Witness> | E | S | 1 | O | 1 | Specifies a SIBRS code value that represents the Marital Status of the Witness. | |
| | <ResidentStatus> (66:88) | <Witness> | E | S | 1 | O | 1 | Specifies a SIBRS code value that represents the Resident Status of the Witness. | |
| | <OtherResidentStatusDesc> | <Witness> | E | S | 1-100 | O | 1 | Specifies additional information of the Witness's Residential Status. | |
| | <DriversLicenseNum> | <Witness> | E | S | 1-30 | O | 1 | Indicates the Witness's Driver License Number. | |
| | <DriversLicenseState> | <Witness> | E | S | 2 | O | 1 | Indicates the Witness's Driver License issuing state. | |
| | <Ethnicity> (66:89) | <Witness> | E | S | 1 | O | 1 | Specifies a SIBRS code value that represents the Ethnicity of the Witness. | |
| | <FBI Num> | <Victim> | E | S | 1-12 | O | 1 | Specifies the FBI Number related to the Witness. | |
| | <OSBI Num> | <Victim> | E | S | 1-12 | O | 1 | Specifies the OSBI Number related to the Witness. | |
| 16.1 | <Address> | <Witness> | | | | | | <i>Specifies the address of the Witness</i> | |
| | <StreetName> | <Address> | E | S | 1-100 | O | 1 | Specifies the Street Address (number and name) of the Witness's Address. | |
| | <UnitNum> | <Address> | E | S | 10 | O | 1 | Specifies the Suite / Apartment Number of the Witness's Address. | |
| | <City> | <Address> | E | S | 1-50 | O | 1 | Specifies the City of the Witness's Address. | |
| | <State> | <Address> | E | S | 2 | O | 1 | Specifies the State of the Witness's Address. | |
| | <Zip> | <Address> | E | S | 5-10 | O | 1 | Specifies the Zip Code of the Witness's Address. | |
| 16.2 | <Employer> | <Witness> | | | | | | <i>Specifies the address of the Witness's Employer</i> | |
| | <Name> | <Employer> | E | S | 1-100 | O | 1 | Specifies the Name of the Witness's Employer. | |
| | <PhoneNum> | <Employer> | E | S | 10 | O | 1 | Specifies the Phone Number of the Witness's Employer. | |
| | <PhoneExt> | <Employer> | E | S | 5 | O | 1 | Specifies the Phone Number Extension of the Witness's Employer. | |
| | <Address> | <Employer> | | | | | 1 | | |
| | <StreetName> | <Address> | E | S | 1-100 | O | 1 | Specifies the Street Address (number and name) of the Witness's Employer. | |
| | <UnitNum> | <Address> | E | S | 10 | O | 1 | Specifies the Suite / Apartment Number of the Witness's Employer. | |
| | <City> | <Address> | E | S | 1-50 | O | 1 | Specifies the City, of the Witness's Employer. | |
| | <State> | <Address> | E | S | 2 | O | 1 | Specifies the State of the Witness's Employer. | |
| | <Zip> | <Address> | E | S | 5-10 | O | 1 | Specifies the Zip Code of the Witness's Employer. | |

3.0 XML File Examples

3.1 Type 1 Sample XML Data – Example 1

```
<?xml version="1.0" encoding="UTF-8"?>
<Incident IncidentNum="00300012" ORINum="OK000000" ValidationStatus="N"
SubmissionStatus="" SupervisorReviewStatus="N">
  <Admin>
    <IncidentType>7</IncidentType>
    <CaseClearance>N</CaseClearance>
    <ReportedOn>2002-12-17T09:30:47</ReportedOn>
    <OccurredFrom>2002-12-17T09:30:47</OccurredFrom>
    <IsLEOKA>1</IsLEOKA>
  </Admin>
  <Victim id="12345">
    <VictimType>I</VictimType>
    <SequenceNum>01</SequenceNum>
    <FirstName>John</FirstName>
    <MiddleName>A</MiddleName>
    <LastName>Abraham</LastName>
    <Age>29</Age>
    <Sex>M</Sex>
    <Race>W</Race>
    <MaritalStatus>M</MaritalStatus>
    <ResidentStatus>R</ResidentStatus>
    <Ethnicity>U</Ethnicity>
    <UnderInfluence>N</UnderInfluence>
    <Handicap>M</Handicap>
    <Employer>
      <Name>Walmart</Name>
      <PhoneNum>9997851100</PhoneNum>
      <PhoneExt>122</PhoneExt>
      <Address>
        <StreetName>Street</StreetName>
        <UnitNum>280</UnitNum>
        <City>Hydro</City>
        <State>OK</State>
        <Zip>78232</Zip>
      </Address>
    </Employer>
    <Injury>M</Injury>
  </Victim>
  <Offense id="45678">
    <Code>120</Code>
    <Completed>1</Completed>
    <HateBias>11</HateBias>
    <UsingAlcohol>1</UsingAlcohol>
    <UsingDrugs>0</UsingDrugs>
    <UsingComputer>0</UsingComputer>
    <NumPremisesEntered>0</NumPremisesEntered>
    <ForcedEntry>0</ForcedEntry>
    <SequenceNum>01</SequenceNum>
    <PremisesInhabited>20</PremisesInhabited>
    <WeaponUsed>40</WeaponUsed>
```

```
<ActivityType>N</ActivityType>
<Location>
  <StreetName>1452 Benjamin Road</StreetName>
  <UnitNum>12</UnitNum>
  <City>Davenport</City>
  <State>OK</State>
  <Zip>78455</Zip>
</Location>
</Offense>
<VictimOffense Victim="12345" Offense="45678"/>
<SuspectArrestee id="78899">
  <SuspectArresteeType>A</SuspectArresteeType>
  <SequenceNum>01</SequenceNum>
  <FirstName>Maverick</FirstName>
  <MiddleName>S</MiddleName>
  <LastName>Burger</LastName>
  <AgeClass>J</AgeClass>
  <Age>17</Age>
  <Sex>M</Sex>
  <Race>W</Race>
  <MaritalStatus>M</MaritalStatus>
  <ResidentStatus>R</ResidentStatus>
  <DriversLicenseState>NJ</DriversLicenseState>
  <ArmedWith>12</ArmedWith>
  <Warrant>
    <WarrantNum>35333</WarrantNum>
  </Warrant>
  <Arrest>
    <ArrestedOn>2002-12-17T09:30:47</ArrestedOn>
    <IncidentTrackingNum>A0103</IncidentTrackingNum>
    <MultipleArrest>N</MultipleArrest>
    <ArrestType>O</ArrestType>
    <ArrestOffense>
      <OffenseCode>120</OffenseCode>
    </ArrestOffense>
  </Arrest>
</SuspectArrestee>
<SuspectArresteeOffense SuspectArrestee="78899" Offense="45678"/>
<VictimizedBy Suspect="78899" Victim="12345">
  <Relation>AQ</Relation>
</VictimizedBy>
<Guardian RelatedTo="78899" Relation="SB">
  <SequenceNum>01</SequenceNum>
</Guardian>
<Vehicle id="131313" Victim="12345" SuspectArrestee="78899">
  <SequenceNum>01</SequenceNum>
  <IsStolen>1</IsStolen>
  <IsRecovered>0</IsRecovered>
  <IsImpounded>0</IsImpounded>
  <IsReceived>0</IsReceived>
  <IsSuspect>0</IsSuspect>
  <IsVictim>0</IsVictim>
  <IsUnauthorizedUse>0</IsUnauthorizedUse>
  <IsAbandoned>0</IsAbandoned>
  <Make>Toyota</Make>
  <Model>Camry</Model>
```

```

    <Year>1990</Year>
    <TopColor>14</TopColor>
    <BottomColor>14</BottomColor>
    <Value>6000</Value>
    <StolenInOfficersJurisdiction>1</StolenInOfficersJurisdiction>
</Vehicle>
<Property Victim="12345" Vehicle="131313" id="141414">
  <SequenceNum>01</SequenceNum>
  <LossType>7</LossType>
  <PropertyType>03</PropertyType>
  <Quantity>1</Quantity>
  <Value>6000</Value>
</Property>
<OffenseProperty Offense="45678" Property="141414"/>
</Incident>

```

3.2 Type 1 Additional Incidents Example 2

```

<?xml version="1.0"?>
<Incident IncidentNum="00078941" ORINum="OK0000000" ValidationStatus="V"
SubmissionStatus="V" SupervisorReviewStatus="P">
  <Admin>
    <IncidentType>2</IncidentType>
    <CaseClearance>N</CaseClearance>
    <ReportedOn>2009-12-12T18:45:00</ReportedOn>
    <OccurredFrom>2009-12-12T18:45:00</OccurredFrom>
    <OccurredTo>2009-12-12T18:45:00</OccurredTo>
    <Location>
      <State>OK</State>
      <Zip>73099</Zip>
    </Location>
  </Admin>
  <Victim id="6452">
    <VictimType>B</VictimType>
    <SequenceNum>01</SequenceNum>
    <LastName>Kohls</LastName>
    <Alias />
    <HomeAddress>
      <Address>
        <StreetName>1715 GARTH BROOKS</StreetName>
        <City>Yukon</City>
        <State>OK</State>
        <Zip>73099</Zip>
      </Address>
    </HomeAddress>
    <Employer>
      <Address />
    </Employer>
  </Victim>
  <Offense id="3488">
    <Code>23C</Code>
    <Completed>1</Completed>
    <HateBias>88</HateBias>
    <UsingAlcohol>0</UsingAlcohol>

```

```
<NumPremisesEntered>0</NumPremisesEntered>
<SequenceNum>02</SequenceNum>
<PremisesInhabited>08</PremisesInhabited>
<Location>
  <StreetName>1715 GARTH BROOKS</StreetName>
  <City>Yukon</City>
  <State>OK</State>
  <Zip>73099</Zip>
</Location>
</Offense>
<VictimOffense Victim="6452" Offense="3488" />
<SuspectArrestee id="6148">
  <SuspectArresteeType>A</SuspectArresteeType>
  <SequenceNum>01</SequenceNum>
  <FirstName>David</FirstName>
  <MiddleName>Watt</MiddleName>
  <LastName>Sanderman</LastName>
  <Alias />
  <SSNum>55555544</SSNum>
  <DateOfBirth>1983-01-10T00:00:00</DateOfBirth>
  <AgeClass>A</AgeClass>
  <Age>26</Age>
  <Sex>M</Sex>
  <Race>W</Race>
  <HairColor>BRO</HairColor>
  <EyeColor>GRN</EyeColor>
  <ResidentStatus>R</ResidentStatus>
  <DriversLicenseNum>080523947</DriversLicenseNum>
  <DriversLicenseState>OK</DriversLicenseState>
  <Ethnicity>N</Ethnicity>
  <ArmedWith>01</ArmedWith>
  <Address>
    <UnitNum></UnitNum>
    <City>Oklahoma City</City>
    <State>OK</State>
    <Zip>73121</Zip>
  </Address>
  <Employer>
    <Name>Klands</Name>
    <Address>
      <UnitNum>6B</UnitNum>
      <City>Oklahoma City</City>
      <State>OK</State>
      <Zip>73121</Zip>
    </Address>
  </Employer>
  <Arrest>
    <ArrestedOn>2009-12-12T18:45:00</ArrestedOn>
    <IncidentTrackingNum>13363</IncidentTrackingNum>
    <MultipleArrest>C</MultipleArrest>
    <ArrestType>O</ArrestType>
    <Location>
      <StreetName>1567 GARTH BROOKS</StreetName>
      <City>YUKON</City>
      <State>OK</State>
      <Zip>73099</Zip>
```

```
</Location>
<ArrestOffense>
  <OffenseCode>23C</OffenseCode>
</ArrestOffense>
</Arrest>
</SuspectArrestee>
<SuspectArresteeOffense SuspectArrestee="6148" Offense="3488" />
<Property id="32977">
  <SequenceNum>01</SequenceNum>
  <LossType>7</LossType>
  <PropertyType>06</PropertyType>
  <Comments>Junior Jeans</Comments>
  <Value>29</Value>
</Property>
<Property id="32967">
  <SequenceNum>02</SequenceNum>
  <LossType>7</LossType>
  <PropertyType>06</PropertyType>
  <Comments>Urban Pipline</Comments>
  <Value>46</Value>
</Property>
<Property id="32957">
  <SequenceNum>03</SequenceNum>
  <LossType>7</LossType>
  <PropertyType>06</PropertyType>
  <Comments>Levi's 559</Comments>
  <Value>34</Value>
</Property>
<Property id="32947">
  <SequenceNum>04</SequenceNum>
  <LossType>7</LossType>
  <PropertyType>06</PropertyType>
  <Comments>Urban Pipeline</Comments>
  <Value>46</Value>
</Property>
<Property id="32937">
  <SequenceNum>05</SequenceNum>
  <LossType>7</LossType>
  <PropertyType>06</PropertyType>
  <Comments>Top Heavy Size L</Comments>
  <Value>56</Value>
</Property>
<Property id="32927">
  <SequenceNum>06</SequenceNum>
  <LossType>7</LossType>
  <PropertyType>06</PropertyType>
  <Comments>Zero Posur Jacket</Comments>
  <Value>150</Value>
</Property>
<Property id="32917">
  <SequenceNum>07</SequenceNum>
  <LossType>7</LossType>
  <PropertyType>06</PropertyType>
  <Comments>Columbia Jacket </Comments>
  <Value>195</Value>
</Property>
```

```
<Property id="33057">
  <SequenceNum>08</SequenceNum>
  <LossType>7</LossType>
  <PropertyType>08</PropertyType>
  <Comments>LeviEmporio Fragrance</Comments>
  <Value>55</Value>
</Property>
<Property id="33047">
  <SequenceNum>09</SequenceNum>
  <LossType>7</LossType>
  <PropertyType>08</PropertyType>
  <Comments>Ralph Lauren Fragrance</Comments>
  <Value>62</Value>
</Property>
<Property id="33037">
  <SequenceNum>10</SequenceNum>
  <LossType>7</LossType>
  <PropertyType>08</PropertyType>
  <Comments>Dolce & Gabbana Fragrance</Comments>
  <Value>55</Value>
</Property>
<Property id="33027">
  <SequenceNum>11</SequenceNum>
  <LossType>7</LossType>
  <PropertyType>08</PropertyType>
  <Comments>Givenchy Fragrance</Comments>
  <Value>52</Value>
</Property>
<Property id="33017">
  <SequenceNum>12</SequenceNum>
  <LossType>7</LossType>
  <PropertyType>08</PropertyType>
  <Comments>DKNY bottle</Comments>
  <Value>40</Value>
</Property>
<Property id="33007">
  <SequenceNum>13</SequenceNum>
  <LossType>7</LossType>
  <PropertyType>08</PropertyType>
  <Comments>Kenneth Cole Reaction</Comments>
  <Value>48</Value>
</Property>
<Property id="32997">
  <SequenceNum>14</SequenceNum>
  <LossType>7</LossType>
  <PropertyType>08</PropertyType>
  <Comments>Kenneth Cole Black</Comments>
  <Value>67</Value>
</Property>
<Property id="32987">
  <SequenceNum>15</SequenceNum>
  <LossType>7</LossType>
  <PropertyType>19</PropertyType>
  <Comments>Norelco Shaver</Comments>
  <Value>24</Value>
</Property>
```

```
<OffenseProperty Offense="3488" Property="32977" />
<OffenseProperty Offense="3488" Property="32967" />
<OffenseProperty Offense="3488" Property="32957" />
<OffenseProperty Offense="3488" Property="32947" />
<OffenseProperty Offense="3488" Property="32937" />
<OffenseProperty Offense="3488" Property="32927" />
<OffenseProperty Offense="3488" Property="32917" />
<OffenseProperty Offense="3488" Property="33057" />
<OffenseProperty Offense="3488" Property="33047" />
<OffenseProperty Offense="3488" Property="33037" />
<OffenseProperty Offense="3488" Property="33027" />
<OffenseProperty Offense="3488" Property="33017" />
<OffenseProperty Offense="3488" Property="33007" />
<OffenseProperty Offense="3488" Property="32997" />
<OffenseProperty Offense="3488" Property="32987" />
<Witness>
  <SequenceNum>01</SequenceNum>
  <FirstName>Skip</FirstName>
  <MiddleName>John</MiddleName>
  <LastName>Smith</LastName>
  <DateOfBirth>1983-01-03T00:00:00</DateOfBirth>
  <AgeClass>A</AgeClass>
  <Age>26</Age>
  <Sex>M</Sex>
  <Race>W</Race>
  <EyeColor>BRO</EyeColor>
  <ResidentStatus>R</ResidentStatus>
  <DriversLicenseNum>C334571</DriversLicenseNum>
  <DriversLicenseState>OK</DriversLicenseState>
  <Ethnicity>N</Ethnicity>
  <Address>
    <StreetName>1746 GARTH BROOKS</StreetName>
    <City>YUKON</City>
    <State>OK</State>
    <Zip>73099</Zip>
  </Address>
  <Employer>
    <Name>OMO </Name>
    <Address>
      <StreetName>1455 GARTH BROOKS</StreetName>
      <City>YUKON</City>
      <State>OK</State>
      <Zip>73099</Zip>
    </Address>
  </Employer>
</Witness>
</Incident>
```

3.3 Type 1 Additional Incidents – Example 3

```
<?xml version="1.0"?>
<Incident xmlns:xsi="http://www.w3.org/2001/XMLSchema-instance"
xmlns:xsd="http://www.w3.org/2001/XMLSchema" IncidentNum="201000003997"
ORINum="OK0090200" ValidationStatus="V" SubmissionStatus="V"
SupervisorReviewStatus="P">
  <Admin>
    <IncidentType>99</IncidentType>
    <CaseClearance>N</CaseClearance>
    <ReportedOn>2010-03-02T23:39:00</ReportedOn>
    <OccurredFrom>2010-03-02T23:39:00</OccurredFrom>
    <OccurredTo>2010-03-02T23:39:00</OccurredTo>
    <IsLEOKA>2</IsLEOKA>
    <Location>
      <StreetName>201 Elk Street</StreetName>
      <City>YUKON</City>
      <State>OK</State>
      <Zip>73099</Zip>
    </Location>
  </Admin>
  <Victim id="7205">
    <VictimType>S</VictimType>
    <SequenceNum>01</SequenceNum>
    <LastName>City of Yukon</LastName>
    <HomePhoneNum>4059991895</HomePhoneNum>
    <HomeAddress>
      <Address>
        <StreetName>5000 MAIN</StreetName>
        <City>YUKON</City>
        <State>OK</State>
        <Zip>73099</Zip>
      </Address>
    </HomeAddress>
    <Employer>
      <Address />
    </Employer>
  </Victim>
  <Offense id="4020">
    <Code>90E</Code>
    <Completed>1</Completed>
    <HateBias>88</HateBias>
    <UsingAlcohol>1</UsingAlcohol>
    <UsingDrugs>0</UsingDrugs>
    <UsingComputer>0</UsingComputer>
    <NumPremisesEntered>0</NumPremisesEntered>
    <SequenceNum>01</SequenceNum>
    <PremisesInhabited>20</PremisesInhabited>
    <Location>
      <StreetName>201 Elk Street</StreetName>
      <City>YUKON</City>
      <State>OK</State>
      <Zip>73099</Zip>
```

```
</Arrest>
</SuspectArrestee>
<SuspectArresteeOffense SuspectArrestee="7109" Offense="4020" />
<Witness>
  <SequenceNum>01</SequenceNum>
  <FirstName>Smith</FirstName>
  <MiddleName>John</MiddleName>
  <LastName>Doe</LastName>
  <HomePhoneNum>4059990999</HomePhoneNum>
  <SSNum>999999999</SSNum>
  <DateOfBirth>1989-14-04T00:00:00</DateOfBirth>
  <Age>20</Age>
  <Sex>F</Sex>
  <Race>W</Race>
  <HairColor>BLN</HairColor>
  <EyeColor>HAZ</EyeColor>
  <HeightFt>5</HeightFt>
  <HeightIn>4</HeightIn>
  <Weight>130</Weight>
  <ResidentStatus>R</ResidentStatus>
  <DriversLicenseNum>y999589996</DriversLicenseNum>
  <DriversLicenseState>OK</DriversLicenseState>
  <Ethnicity>N</Ethnicity>
  <Address>
    <StreetName>123209 2ND</StreetName>
    <City>YUKON</City>
    <State>OK</State>
    <Zip>73099</Zip>
  </Address>
  <Employer>
    <Name>KfCF Cafe</Name>
    <Address>
      <StreetName>123505 MAIN</StreetName>
      <City>YUKON</City>
      <State>OK</State>
      <Zip>73099</Zip>
    </Address>
  </Employer>
</Witness>
<Witness>
  <SequenceNum>02</SequenceNum>
  <FirstName>Lero</FirstName>
  <MiddleName>John</MiddleName>
  <LastName>Fiveth</LastName>
  <SSNum>998678888</SSNum>
  <DateOfBirth>1983-07-29T00:00:00</DateOfBirth>
  <Age>27</Age>
  <Sex>M</Sex>
  <Race>W</Race>
  <HairColor>BRO</HairColor>
  <EyeColor>GRN</EyeColor>
  <HeightFt>5</HeightFt>
  <HeightIn>9</HeightIn>
  <Weight>160</Weight>
  <ResidentStatus>R</ResidentStatus>
  <DriversLicenseNum>099999099</DriversLicenseNum>
```

```
<DriversLicenseState>OK</DriversLicenseState>  
<Ethnicity>N</Ethnicity>  
<Address>  
  <StreetName>123404 2ND</StreetName>  
  <UnitNum>36</UnitNum>  
  <City>YUKON</City>  
  <State>OK</State>  
  <Zip>73099</Zip>  
</Address>  
<Employer>  
  <Address />  
</Employer>  
</Witness>  
</Incident>
```

4.0 Usage of ID and IDREF types

Incident reports are comprised of multiple segments of data that describe the important details of the incident. Some of the segments include: Administrative (Admin), Reporting Officer, Victim, Offense, Property, Suspect/Arrestee (Offender), Witness and Reportee.

Because an incident can involve multiple victims, offenses, property and offenders, it is important to establish the proper and accurate associations between segment values of an incident. To achieve this objective, the SIBRS Interface Control Document XML uses the concept of identifiers (IDs) and identifier references (IDREF) to establish linkages between incident segment values.

The following table logically describes an example incident, key segments of data, and the relationships that exist between each segment. The example incident is a robbery and simple assault involving a victim, Smith. Smith's wristwatch and a ring were stolen and he was punched in the face by Bryant, one of offenders. The criminals, Jones and Bryant, were arrested and charged.

The table below lists the ID and IDREF values for the segment data that would appear in the XML.

| XML Incident Segment - Attribute | Occurrence | ID Value | IDREF Value |
|--|----------------------|----------|--------------------------------|
| Victim | Smith | 01 | |
| Offense | 120 - Robbery | 02 | |
| VictimOffense – Victim | | | ID="01" (refers to Smith) |
| VictimOffense – Offense | | | ID="02" (refers to Robbery) |
| Offense | 13B – Simple assault | 03 | |
| VictimOffense – Victim | | | ID="01" (refers to Smith) |
| VictimOffense – Offense | | | ID="03" (refers to S. Assault) |
| Suspect/Arrestee | Jones | 04 | |
| SuspectArresteeOffense – SuspectArrestee | | | ID="04" (refers to Jones) |
| SuspectArresteeOffense – Offense | | | ID="02" (refers to Robbery) |
| VictimizedBy – Suspect | | | ID="04" (refers to Jones) |
| VictimizedBy – Victim | | | ID="01" (refers to Smith) |
| Suspect/Arrestee | Bryant | 05 | |
| SuspectArresteeOffense – SuspectArrestee | | | ID="05" (refers to Bryant) |
| SuspectArresteeOffense – Offense | | | ID="02" (refers to Robbery) |
| SuspectArresteeOffense – SuspectArrestee | | | ID="05" (refers to Bryant) |
| SuspectArresteeOffense – Offense | | | ID="03" (refers to S. Assault) |
| VictimizedBy – Suspect | | | ID="05" (refers to Bryant) |
| VictimizedBy – Victim | | | ID="01" (refers to Smith) |

| | | | |
|----------------------------|------------|----|--------------------------------|
| Property | Wristwatch | 06 | |
| Property – Victim | | | ID="01" (refers to Smith) |
| OffenseProperty – Offense | | | ID="02" (refers to Robbery) |
| OffenseProperty – Property | | | ID="06" (refers to Wristwatch) |
| Property | Ring | 07 | |
| Property – Victim | | | ID="01" (refers to Smith) |
| OffenseProperty – Offense | | | ID="02" (refers to Robbery) |
| OffenseProperty – Property | | | ID="07" (refers to Ring) |

Through this model of association using XML tagging, it is possible to model the most complex incident scenario consisting of multiple victims, offenses, offenders and property.

5.0 Glossary of Terms

- ASCII - American Standard for Computer Information Interchange
- NIBRS - National Incident Based Reporting System
- NIST - National Institute of Standards & Technology
- OSBI - Oklahoma Bureau of Investigation
- SIBRS - State Incident Based Reporting System
- Type 1 - A full set of data that describes a crime incident
- UCR - Uniform Crime Reporting

6.0 Addendum #1

This addendum summarizes the changes for the Phase 2 deployment of the SIBRS system.

| Page # | Sub-section | Segment | Tag | Change Description |
|--------|-------------|-------------------|-------------------|--|
| 6 | 2 | Admin | IsLEOKA | Added IsLEOKA tag to identify an incident as a LEOKA incident. |
| 7 | 4 | Victim | WorkPhoneNum | Removed this tag. |
| 7 | 4 | Victim | WorkPhoneExt | Removed this tag. |
| 8 | 4 | Victim | IsLEOKA | Added IsLEOKA tag to identify if the victim was an Officer. |
| 8 | 4 | Victim | CallType | Added CallType tag to represent type of call the in which the Officer was involved. |
| 8 | 4.2 | Victim | BusinessAddress | Removed BusinessAddress tag and added Employer tag. |
| 8 | 4.2 | Victim | Employer | Added Employer tag in place of BusinessAddress tag. |
| 8 | 4.2 | Victim | Name | Added Name tag to represent employer's name. |
| 8 | 4.2 | Employer | PhoneNum | Added new PhoneNum tag to capture business phone number of the victim. |
| 8 | 4.2 | Employer | PhoneExt | Added new PhoneExt tag to capture business phone number extension of the victim. |
| 9 | 4.3 | AggAssaultHomCirc | Num | Added Num attribute in Victim section to represent sequence number of AggAssaultHomCirc tag. |
| 9 | 4.3 | AggAssaultHomCirc | AggAssaultHomCirc | Changed AggAssaultHomCirc tag to be within AggAssaultHomCirc tags to enable to represent more than one |

| | | | | |
|----|------|-----------------|--------------|---|
| | | | | occurrence. |
| 10 | 7 | SuspectArrestee | FirstName | Made this tag required if available. |
| 10 | 7 | SuspectArrestee | LastName | Made this tag required if available. |
| 10 | 7 | SuspectArrestee | WorkPhoneNum | Removed this tag. |
| 10 | 7 | SuspectArrestee | WorkPhoneExt | Removed this tag. |
| 10 | 7 | SuspectArrestee | Sex | Made this tag required if available. |
| 11 | 7 | SuspectArrestee | Race | Made this tag required if available. |
| 11 | 7 | SuspectArrestee | Ethnicity | Changed this tag to be string instead of numeric to support a SIBRS system code value. |
| 12 | 7.3 | Employer | PhoneNum | Added new PhoneNum tag to capture the business phone number of the SuspectArrestee. |
| 12 | 7.3 | Employer | PhoneExt | Added new PhoneExt tag to capture the business phone number extension of the SuspectArrestee. |
| 14 | 12 | Vehicle | Comments | Set maximum length of this field to 500 characters. |
| 15 | 13 | Property | Comments | Set maximum length of this field to 500 characters. |
| 16 | 15 | Reportee | WorkPhoneNum | Removed this tag. |
| 16 | 15 | Reportee | WorkPhoneExt | Removed this tag. |
| 17 | 15 | Reportee | Ethnicity | Changed this tag to be a string instead of numeric to support a SIBRS system code value. |
| 17 | 15.2 | Employer | PhoneNum | Added new PhoneNum tag to capture business phone number of the Reportee. |
| 17 | 15.2 | Employer | PhoneExt | Added new PhoneExt tag to capture business phone number extension of the Reportee. |
| 17 | 16 | Witness | WorkPhoneNum | Removed this tag. |
| 17 | 16 | Witness | WorkPhoneExt | Removed this tag. |
| 18 | 16 | Witness | Ethnicity | Changed this tag to be a |

| | | | | |
|----|------|-------------------|-------------------|--|
| | | | | string instead of numeric to support a SIBRS system code value. |
| 18 | 16.2 | Employer | PhoneNum | Added new PhoneNum tag to capture business phone number of the Witness |
| 18 | 16.2 | Employer | PhoneExt | Added new PhoneExt tag to capture business phone number extension of the Witness. |
| 21 | 2 | Admin | OccurredFrom | Changed this tag to be mandatory. |
| 21 | 2 | Admin | IsLEOKA | Added IsLEOKA tag to identify an incident as a LEOKA incident. |
| 21 | 3 | Victim | IsLEOKA | Added IsLEOKA tag to identify if the victim was an Officer. |
| 21 | 3 | Victim | OfficerKilled | Added OfficerKilled tag to indicate whether the victim was an officer and killed. |
| 21 | 3 | Victim | CallType | Added CallType tag to represent type of call the in which the Officer was involved. |
| 22 | 3 | Victim | TypeOfAssignment | Added TypeOfAssignment tag to indicate type of assignment the officer had. |
| 22 | 3 | Victim | VestWorn | Added VestWorn tag to indicate whether officer was wearing a vest. |
| 22 | 3 | Victim | LEOKAORI | Added tag LEOKAORI to capture the officer's agency number if victim was an officer. |
| 22 | 3.1 | AggAssaultHomCirc | Num | Added Num attribute in Victim section to represent sequence number of AggAssaultHomCirc tag. |
| 22 | 3.1 | AggAssaultHomCirc | AggAssaultHomCirc | Changed AggAssaultHomCirc tag to be within AggAssaultHomCirc |

| | | | | |
|----|----|----------|------------|---|
| | | | | tags to enable to represent more than one occurrence. |
| 24 | 10 | Vehicle | Plate Year | Specifies the year of the plate of the vehicle. |
| 25 | 11 | Property | Comments | Set the maximum length of this field to 500 characters. |