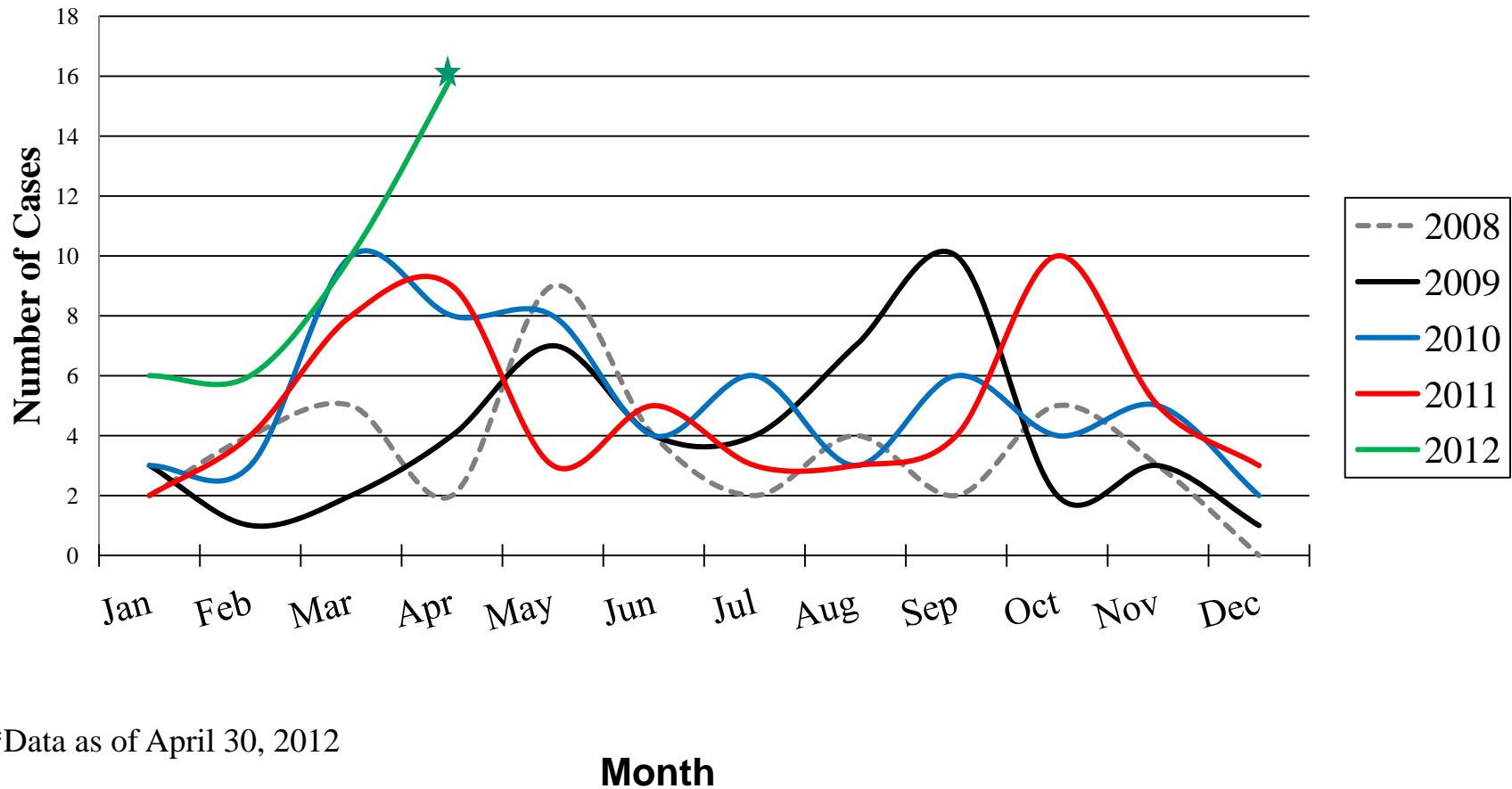


Number of Animal Rabies Cases by Month of Diagnosis -- Oklahoma, 2008-2012*



*Data as of April 30, 2012



Acute Disease Service
Oklahoma State
Department of Health

For further information call or visit the website
Acute Disease Service
Oklahoma State Department of Health
Phone (405) 271-4060
<http://ads.health.ok.gov>