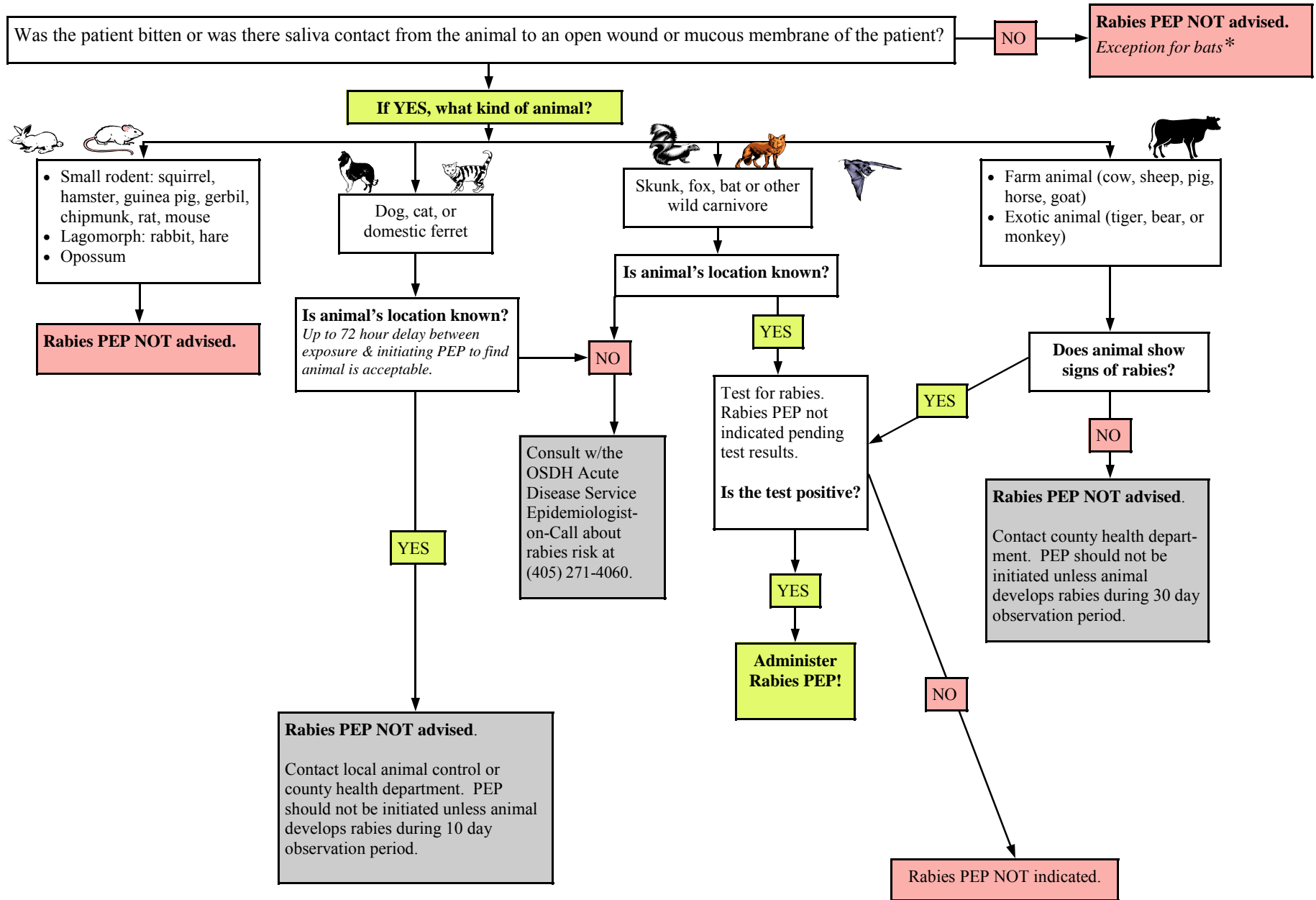


RABIES POSTEXPOSURE PROPHYLAXIS (PEP) ASSESSMENT ALGORITHM



* Bats pose particular risks and rabies transmission has occurred in the absence of a recognized bite. Therefore, every effort should be made to capture and test the bat involved in the exposure incident. If the patient can provide adequate history that no direct exposure occurred, then no treatment is necessary. If the patient is an unobserved child, or a person who was asleep, intoxicated, or mentally challenged, then PEP may be indicated. Consult w/ the OSDH Acute Disease Service Epidemiologist-on-Call by calling (405) 271-4060.

