

## **This is an official Oklahoma Health Alert Network Health Advisory**

June 26, 2008

OKHAN-0089-08-06-26-ADV-N

### **JUDICIOUS AND APPROPRIATE USE OF HUMAN RABIES VACCINE URGED DURING NATIONAL VACCINE SHORTAGE**

A temporary national shortage of human rabies vaccine has occurred due to an interruption in the production of RabAvert®, one of two human rabies vaccines distributed in the United States and produced by Novartis Vaccines.

In response to decreased vaccine supplies, the Centers for Disease Control and Prevention (CDC) has issued an advisory urging judicious use of human rabies vaccine and increased consultation with state health departments prior to initiating a rabies post-exposure prophylaxis (PEP) immunization series. The Acute Disease Service of the Oklahoma State Department of Health has an epidemiologist-on-call available 24/7 for rabies consultations by calling (405) 271-4060. Guidelines for the Management of Animal Bite Incidents and current data on the distribution of rabid animals by county are also available at <http://www.ok.gov/health/>

The frequency of animal bites, particularly dog and cat bites, increases during the summer months. However, very few of these incidents should result in rabies PEP if efforts are first made to detain the animal for observation or testing. Healthcare practitioners are encouraged to educate their patients about the following when evaluating an animal bite wound:

- Bites from squirrels, opossums, rats, mice, and other small rodents almost never require rabies post-exposure prophylaxis, even when the animal is unavailable for testing.
- As long as the bite wound is not deeply penetrating to the face, neck, or major nerve, the decision to initiate rabies PEP can be safely delayed for 72 hours while locating the biting animal.
- If an animal is destroyed, refrigerate and get the specimen processed for shipment to the State Public Health Laboratory as soon as possible to reduce the chances of brain decomposition.
- If a biting animal is a stray and cannot be captured, do not harass or frighten it. As long as the animal remains in the area and is observed alive for 10 days—even at a distance—it is an acceptable alternative for rabies observation and the bite victim does not need to receive rabies PEP.

The OSDH Rabies Exposure Assessment Algorithm (attached) may also serve as a clinical resource. Laminated card stock posters will soon become available upon request.

Your efforts in helping to preserve this valuable resource for Oklahomans who are truly at risk of developing rabies disease are appreciated.

---

Categories of Health Alert messages:

**Health Alert** highest level of notification that the Oklahoma State Department of Health will send out. This usually refers to an immediate threat to the OSDH community and requires immediate action.

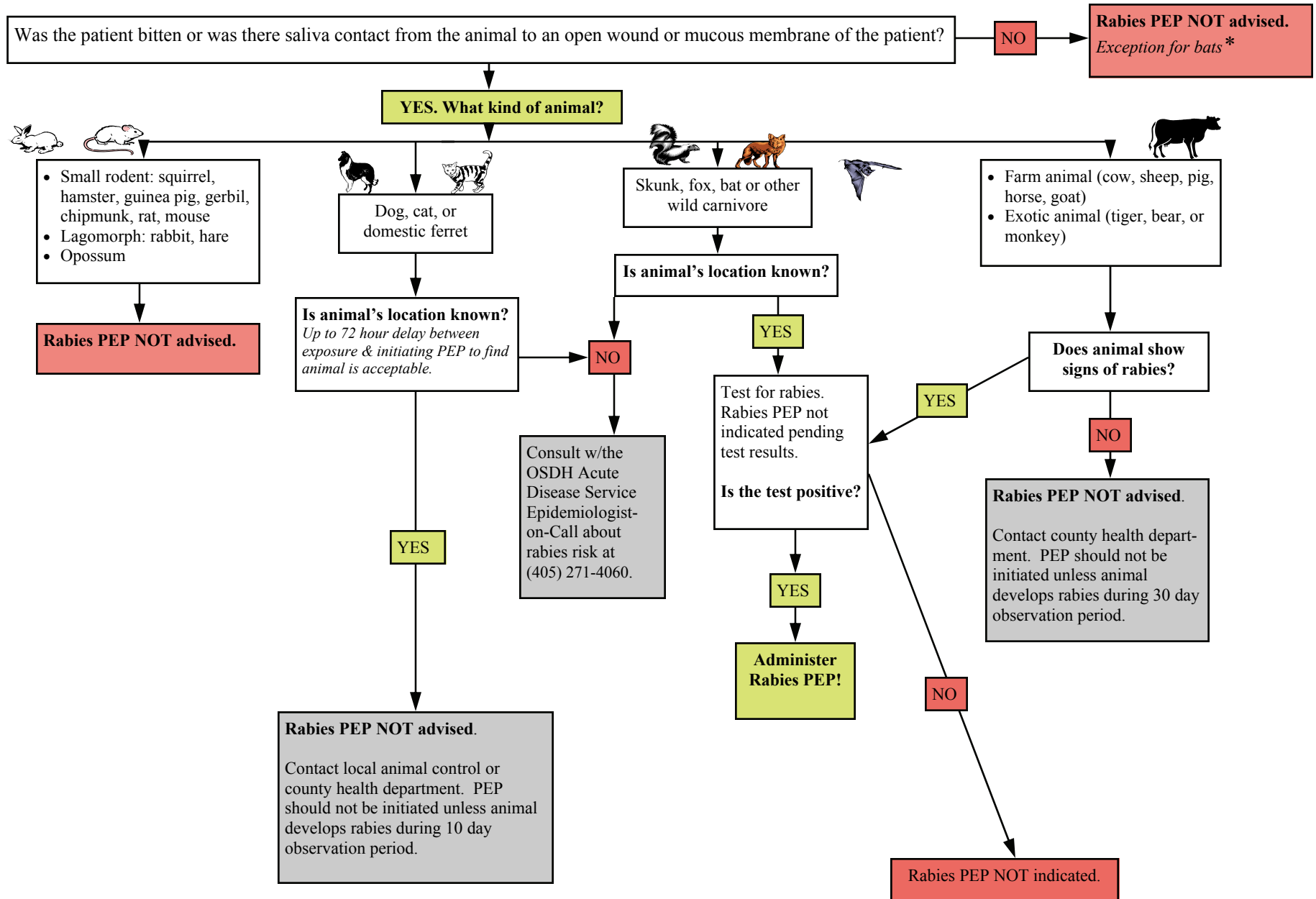
**Health Advisory** advises medical providers of a condition in the area. These are usually not medical emergencies. These may not require immediate action.

**Health Update** provides updates on previous alerts or advisories. These are unlikely to require immediate action.

## This advisory has been distributed to Primary Care Physicians, Occupational Health Physicians, Emergency Rooms, Infection Control Practitioners, Pharmacies, and state and local health personnel##

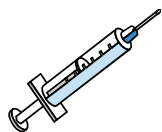
=====  
You have received this message based upon the information contained within our emergency notification database. If you have a different or additional e-mail or fax address that you would like us to use please contact the OSDH Acute Disease Service at (405) 271-4060.  
=====

# RABIES POSTEXPOSURE PROPHYLAXIS (PEP) ASSESSMENT ALGORITHM



\* Bats pose particular risks and rabies transmission has occurred in the absence of a recognized bite. Therefore, every effort should be made to capture and test the bat involved in the exposure incident. If the patient can provide adequate history that no direct exposure occurred, then no treatment is necessary. If the patient is an unobserved child, or a person who was asleep, intoxicated, or mentally challenged, then PEP may be indicated. Consult w/ the OSDH Acute Disease Service Epidemiologist-on-Call by calling (405) 271-4060.

**RABIES BIOLOGICS FOR POSTEXPOSURE PROPHYLAXIS, UNITED STATES, 2008**



**Human Rabies Vaccine**

Rabies Vaccine, human diploid cell vaccine (HDCV)  
Intramuscular..... Imovax®Rabies

Rabies vaccine, purified chicken embryo cell (PCEC)  
Intramuscular..... Rabavert®

**Rabies Immune Globulin (RIG)**

Rabies immune globulin, human (HRIG)  
..... Imogam®Rabies - HT

..... HyperRab™ S/D



**Manufacturer**

sanofi Pasteur  
Phone: 800-822-2463  
www.vaccineplace.com/products

Novartis Vaccines and  
Diagnostics  
Phone: 800-244-7668  
www.rabavert.com

sanofi Pasteur  
Phone: 800-822-2463  
www.vaccineplace.com/products/

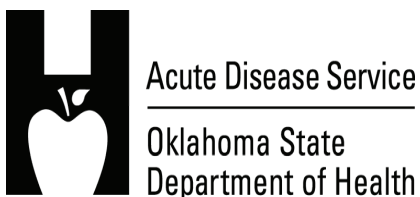
Talecris Biotherapeutics  
Bayer Biological Products  
Phone: 800-243-4153  
www.talecris-pi.info.



**RABIES POSTEXPOSURE PROPHYLAXIS SCHEDULE**

Vaccination Status	Treatment	Regimen*
Not Previously Vaccinated	Local wound cleansing	All postexposure treatment should begin with immediate thorough cleansing of all wounds with soap and water. If available, a virucidal agent such as a povidone-iodine solution should be used to irrigate the wounds.
	HRIG	20 IU/kg body weight. If anatomically feasible, the <b>full dose</b> should be infiltrated around the wound(s) and any remaining volume should be administered IM at an anatomical site distant from vaccine administration. Also, HRIG should not be administered in the same syringe as vaccine. Because HRIG may partially suppress active production of antibody, no more than the recommended dose should be given.
Previously Vaccinated Δ	Local wound cleansing	All postexposure treatment should begin with immediate thorough cleansing of all wounds with soap and water. If available, a virucidal agent such as a povidone-iodine solution should be used to irrigate the wounds.
	HRIG	HRIG should <b>not</b> be given.
	Vaccine	HDCV or PCEC 1.0ml, IM (deltoid area ±), one each on days 0, 3, 7, 14, and 28.
	Vaccine	HDCV or PCEC 1.0 ml, IM (deltoid area±), one each on days 0 and 3.

\* These regimens are applicable for all age groups, including children.  
 ± The deltoid area is the only acceptable site of vaccination for adults and older children. For younger children, the outer aspect of the thigh may be used. Vaccine should never be administered in the gluteal area.  
 Δ Any person with a history of pre-exposure vaccination with HDCV or PCEC; prior postexposure prophylaxis with HDCV, RVA, or PCEC; or previous vaccination with any other type of rabies vaccine and a documented history of antibody response to the prior vaccination



For further information, call or visit us on the World Wide Web.  
 Acute Disease Service  
 Oklahoma State Department of Health  
 Phone (405) 271-4060  
<http://ads.health.ok.gov>