



Creating a State of Health

Chlamydia

THE FACTS

- Chlamydia (cla MI dee a) is a sexually transmitted disease (STD).
- Anyone can get chlamydia. It is very common among teens and young adults.
- Young, sexually active females need testing every year.
- Most people who have chlamydia don't know it. Often the disease has no symptoms.
- You can pass chlamydia to others without knowing it.
- Chlamydia is easy to treat and cure.
- If you do not treat chlamydia, it can lead to serious health problems.

How does someone get chlamydia?

- You can get chlamydia by having sex with someone who has it.
- "Having sex" means having anal, oral, or vaginal sex.
- If you are a pregnant woman who has chlamydia, you can pass the infection to your baby.

What are the symptoms of chlamydia?

IF YOU ARE A WOMAN

You can get chlamydia in the vagina or rectum. You may not notice any symptoms. But if you do have symptoms, you might notice:

- An unusual discharge from your vagina.
- Burning when you urinate.
- Pain, bleeding, or discharge from your rectum if you have anal sex.

If the infection spreads, you might get a fever or have pain during sex.

IF YOU ARE A MAN

You can get chlamydia in the penis or rectum. You may not notice any symptoms. But if you do have symptoms, you might notice:

- A discharge from your penis.
- Burning or itching around the opening of your penis when you urinate.
- Pain, bleeding, or discharge from your rectum if you have receptive anal sex.

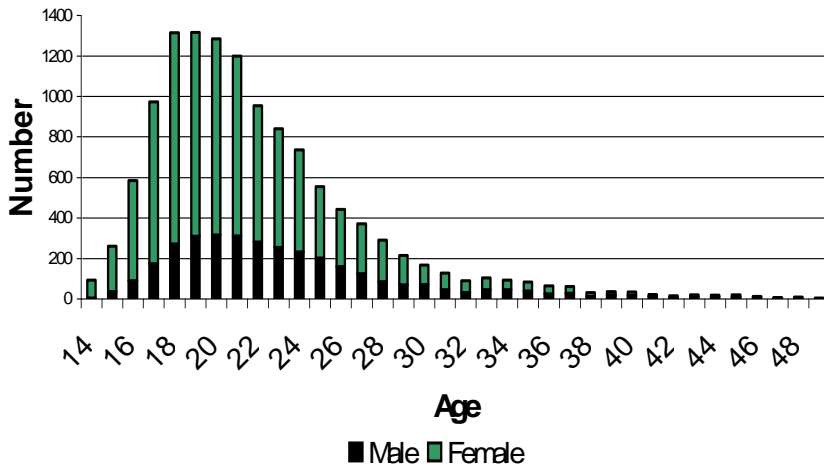


Chlamydia 2007

Creating a State of Health

In Oklahoma, the rate of chlamydial infection has continued to increase since 1997.

Number of chlamydia cases reported in Oklahoma by age and gender 2007

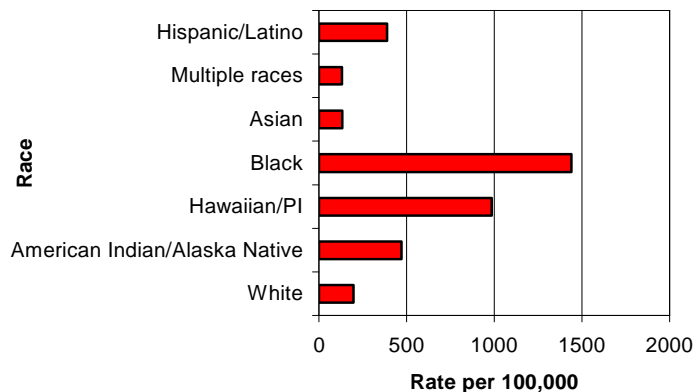


- ◆ In 2007 there were 12,529 reported cases of Chlamydia in Oklahoma.
- ◆ Females accounted for 73% of the reported cases.
- ◆ Approximately 91% of the reported Chlamydia cases were between the ages of 15 and 29, with 55% between 20 to 29.
- ◆ Those aged 15 to 19 and 20 to 24 had rates of infection 5 times higher than the overall state rate, 1,753 and 1,839 per 100,000 respectively.

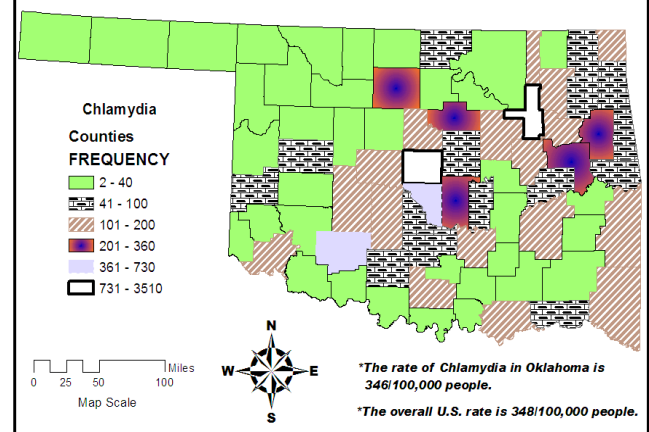
- ◆ The rate among African Americans was 7 times higher than Whites (1,439 per 100,000 compared to 197 per 100,000) and represents the highest rate among all racial/ethnic groups.
- ◆ The rate among American Indians was 2.4 times higher than the White population.
- ◆ Hawaiian/PI's had the second highest rate but represented less than 40 cases.

- ◆ In 2006, Oklahoma ranked 17th out of 50 states for Chlamydia infection
- ◆ The rate of Chlamydia in Oklahoma was 346 per 100,000 people, comparable to the U.S. rate of 348 per 100,000 people.
- ◆ Oklahoma and Tulsa counties reported 48% of the total Chlamydia cases in 2007.

Rate Comparison per 100,000 by Race, Oklahoma 2007



Chlamydia Cases by County, Oklahoma 2007



Hispanic/Latino category includes cases that consider themselves multi-racial/ethnic.

Updated November 2008