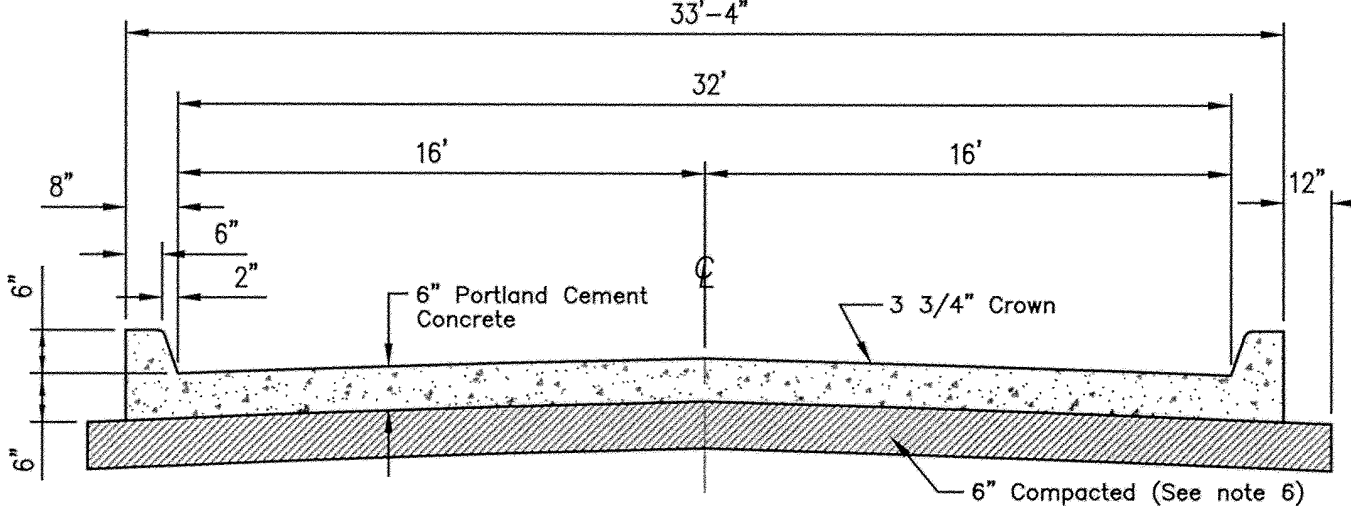
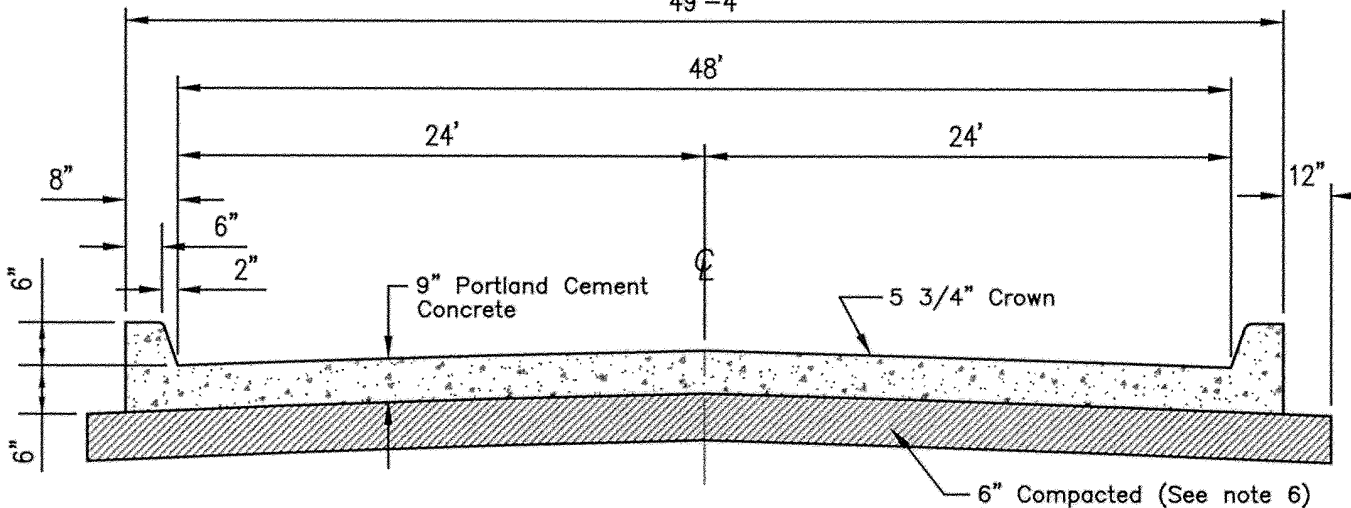


LOCAL RESIDENTIAL STREET
50' R/W



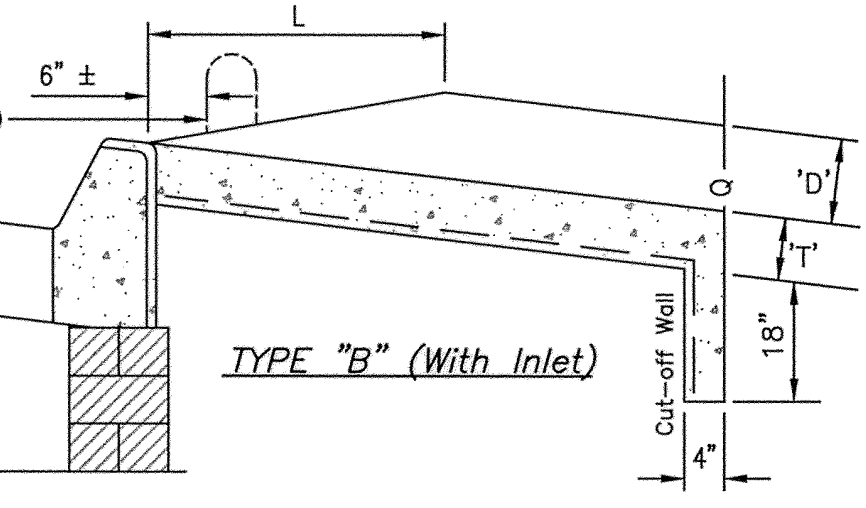
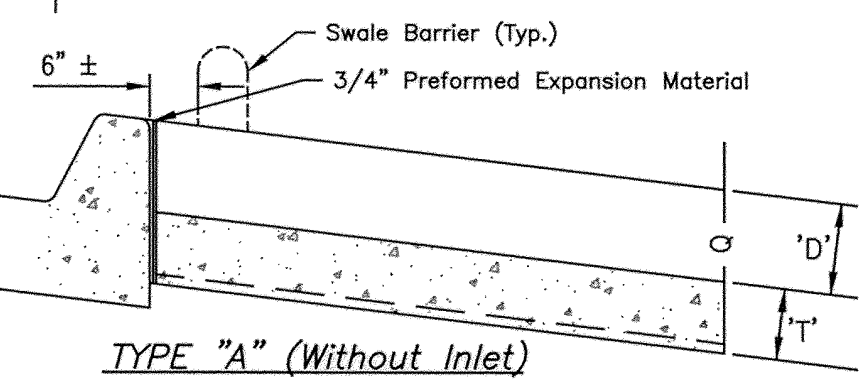
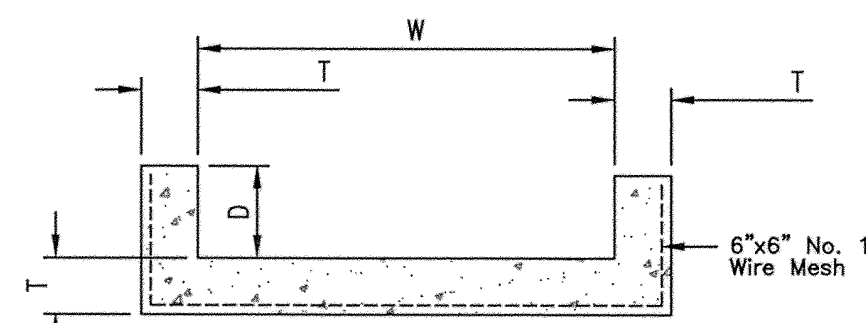
LOCAL COMMERCIAL AND COLLECTOR STREET
60' R/W



PRIMARY AND SECONDARY ARTERIAL STREET
100' R/W

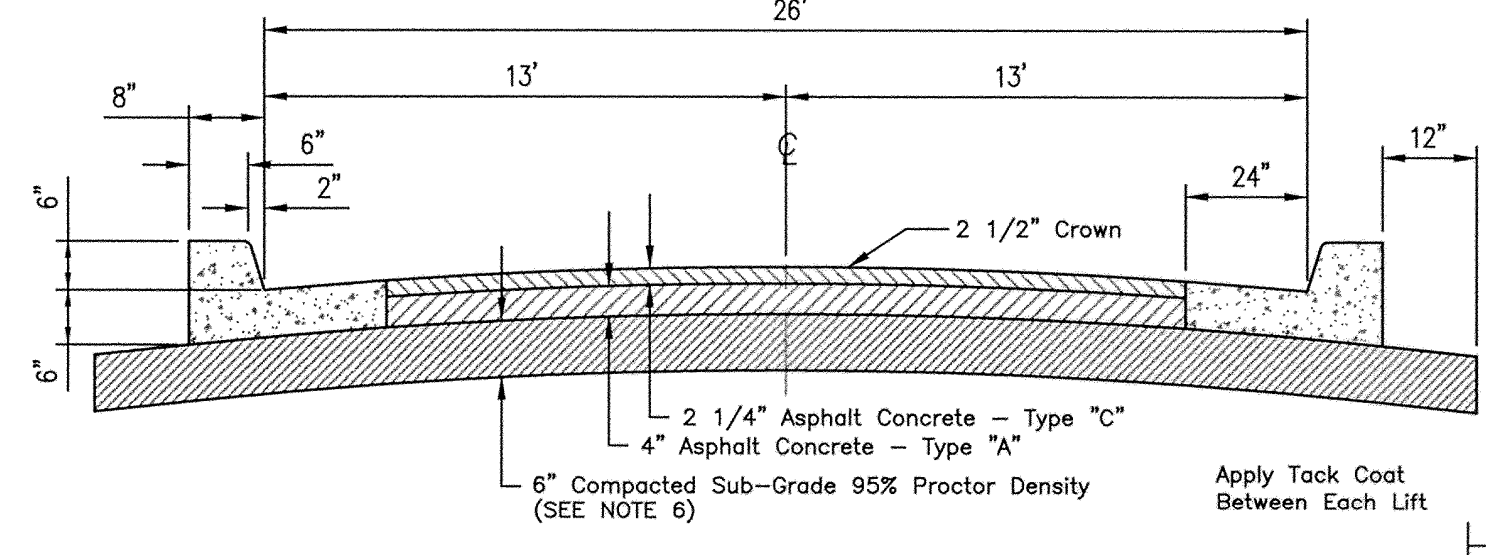
TYPICAL STREET SECTIONS FOR CONCRETE

Swale No.	Type	W'	D'	T'	L'

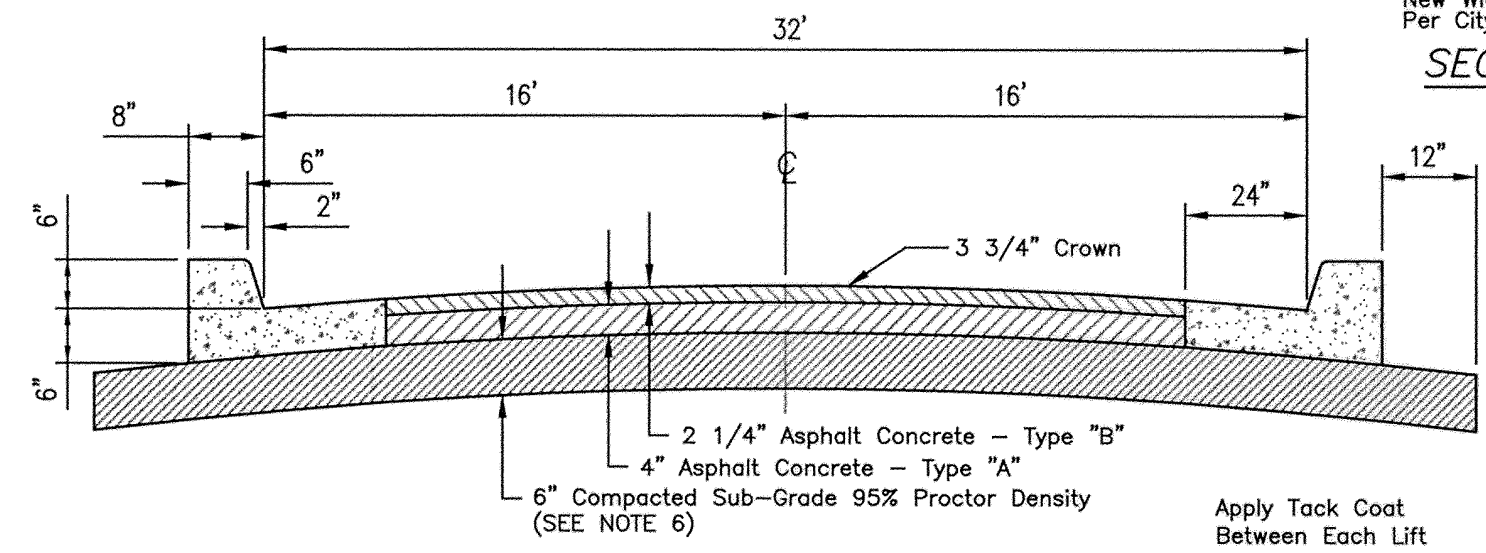


PAVED OVERFLOW SWALE
Details & Sections

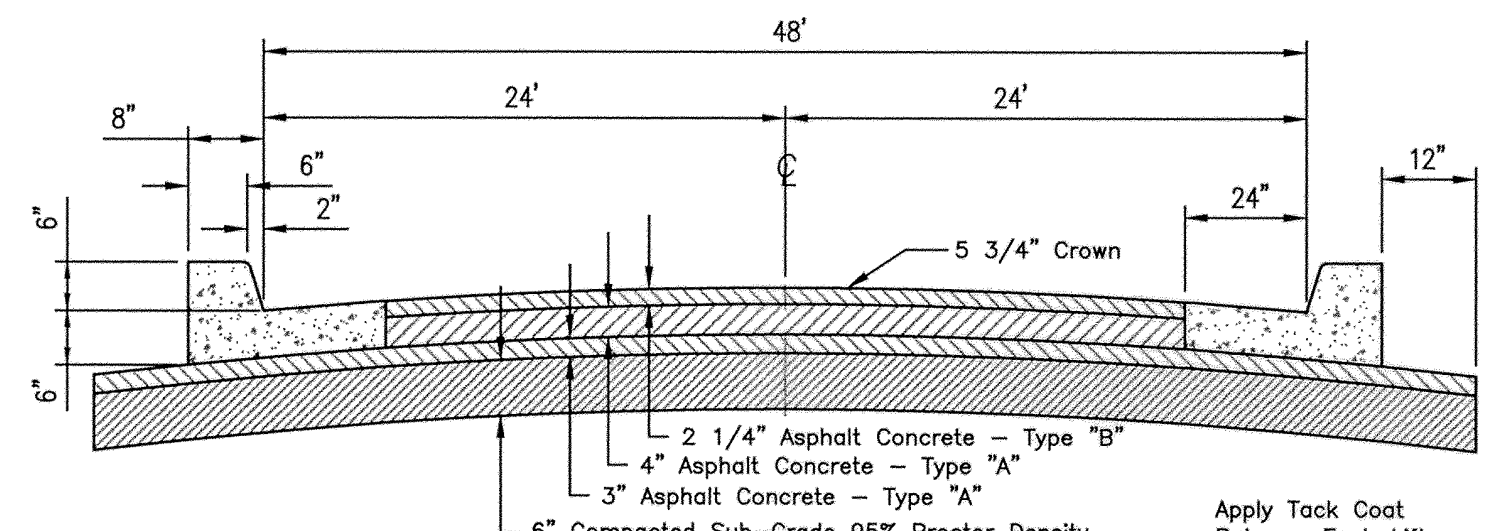
- NOTE:
- Half Paving Using A Header Curb At The Centerline May Be Constructed Only When Approved In Writing By The City Engineer.
 - Widening Of Existing Paving Using The Appropriate Section Hereon With A Sawn Edge On The Existing Paving May Be Used If Prior Approval Is Obtained In Writing From The City Engineer.
 - All Structures For Drainage Across The Road Must Be Extended, Replaced Or Added As Required Prior To Widening.
 - If Half Paving Is Permitted, All Drainage Structures Must Be Installed For Full Width Paving.
 - Section line widening shall be the same material as used on the interior streets and the sawn edge along the existing paving shall be tack coated and adequately sealed.
 - Subgrade: The contractor shall have approved laboratory tests on the subgrade, minimum one test per 400 L.F. or portion thereof. The Contractor shall pay for the tests. If the tests indicate that the liquid limit is 36 or more, or the P.I. is 12 or more, the subgrade must be must be removed and replaced with select material compacted to 95% S.P.D. a minimum of 1 foot in depth, OR modified and re-compacted to a minimum depth of 6" with a minimum of 5% lime or 7.5% Fly Ash or 12.5% Concrete Kiln Dust (CKD) or in an amount and method as recommended by a certified laboratory and approved by the City Engineer.



LOCAL RESIDENTIAL STREET
50' R/W

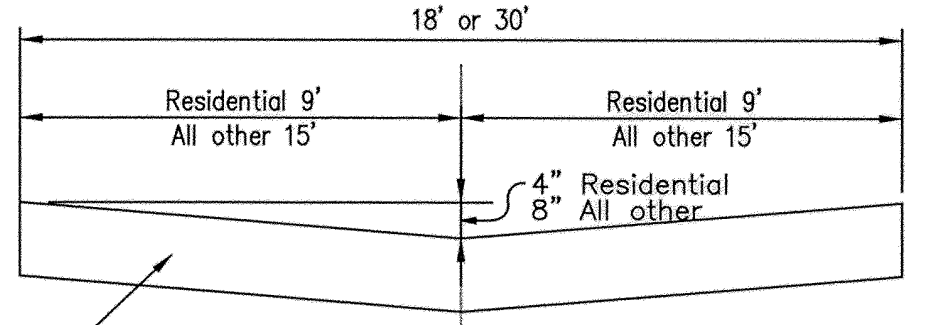


LOCAL COMMERCIAL AND COLLECTOR STREET
60' R/W



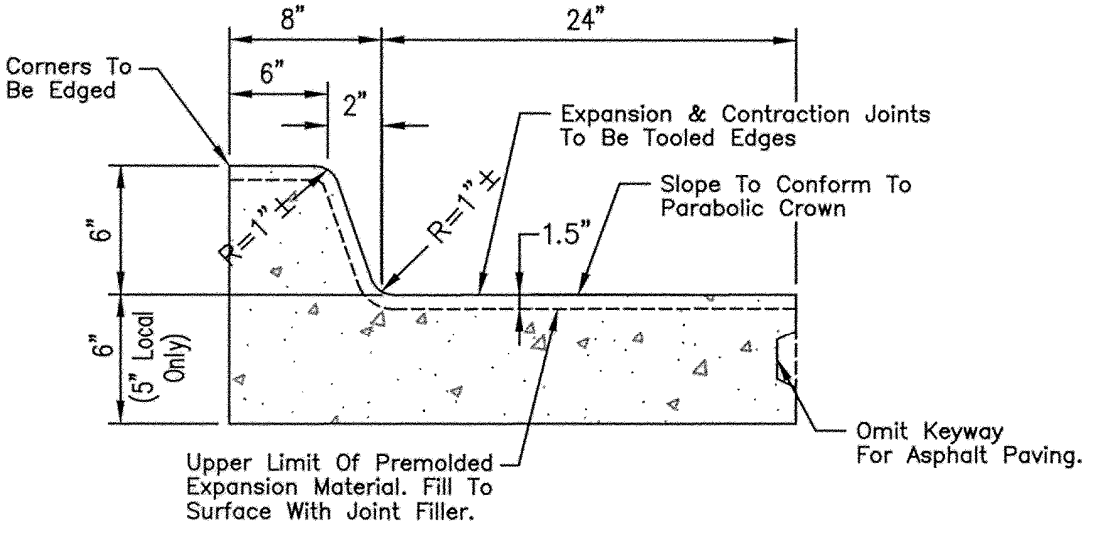
PRIMARY AND SECONDARY ARTERIAL STREET
100' R/W

TYPICAL STREET SECTIONS FOR ASPHALT

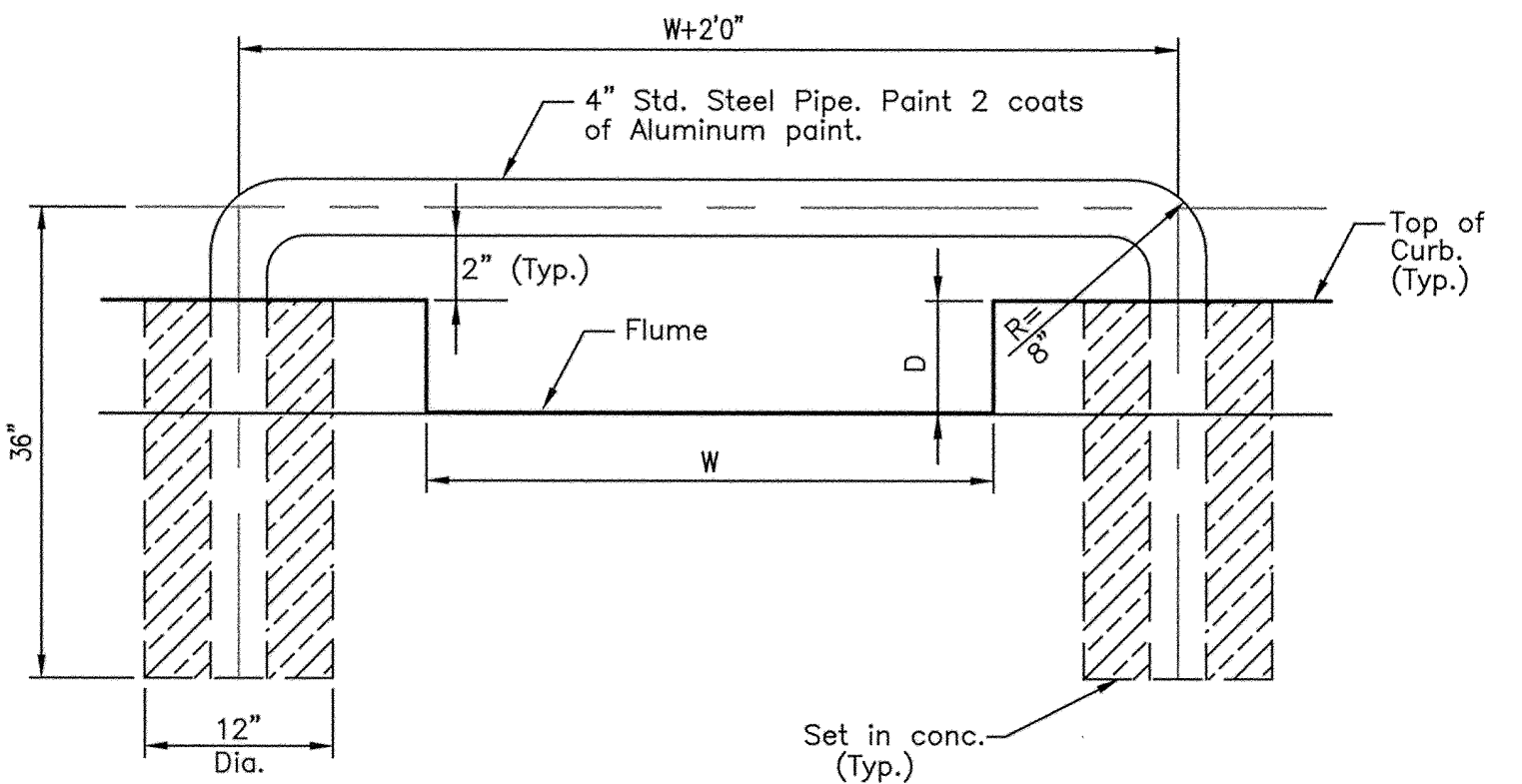


Construction shall comply with CONCRETE or ASPHALT shown above for LOCAL COMMERCIAL AND COLLECTOR STREET.

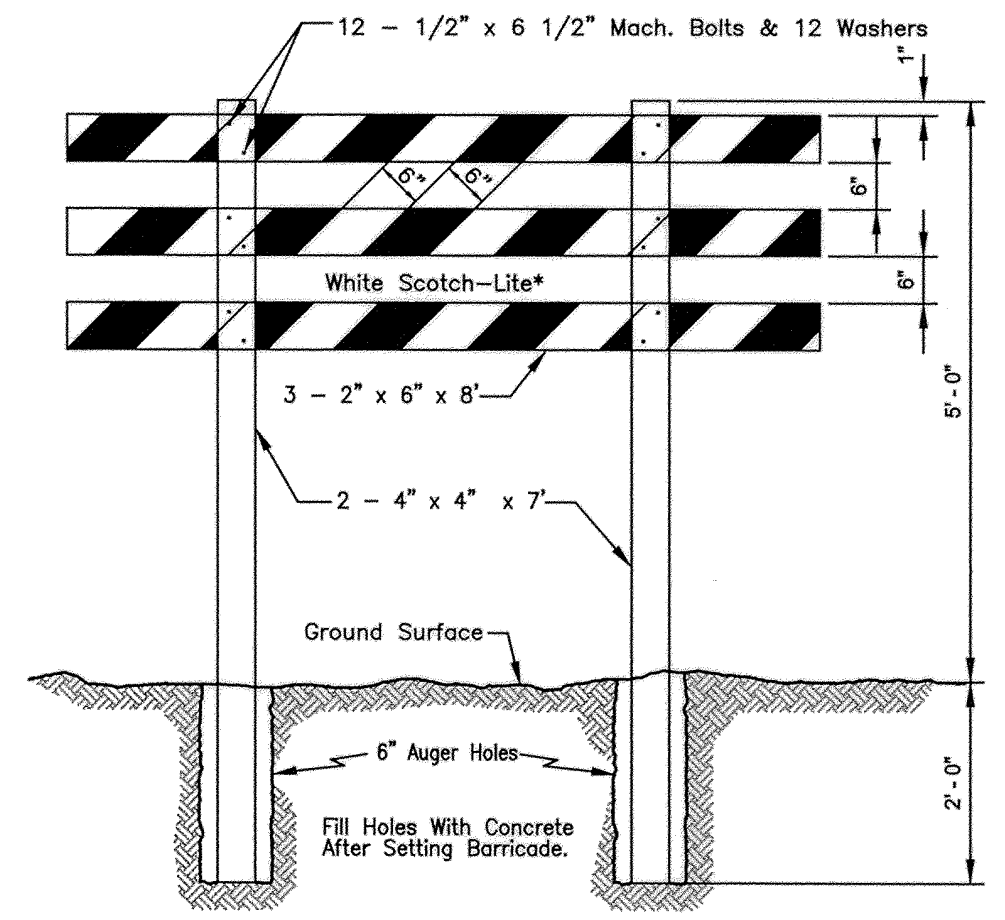
TYPICAL ALLEY SECTION



STANDARD CURB & GUTTER DETAIL



SWALE BARRIER DETAIL
(INSTALL AT BACK OF CURB)
No Scale

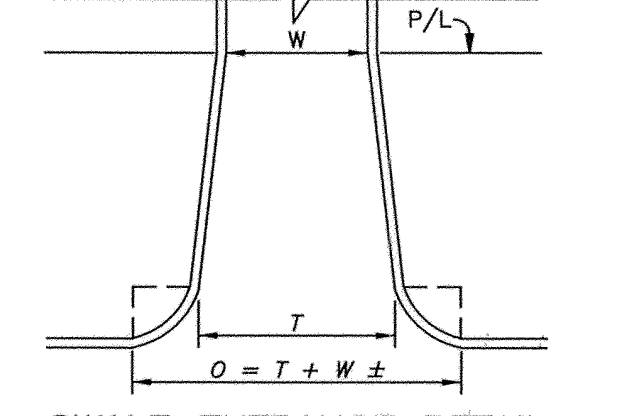


* Scotch - Lite 6" Wide To Be Attached at 45° Angles on 6" Spaces After Barricade Has Had 2 Coats Of Outside Black Paint

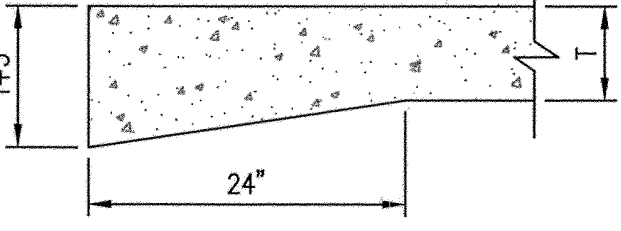
STANDARD REFLECTOR TYPE BARRICADE

$$T = \frac{Q}{(C)(H^{9/2})}$$

C = 2.83
H = Curb Height



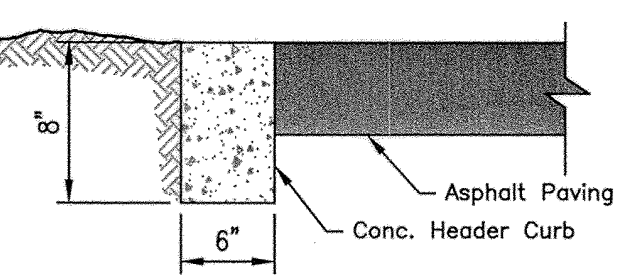
SWALE ENTRANCE DETAIL



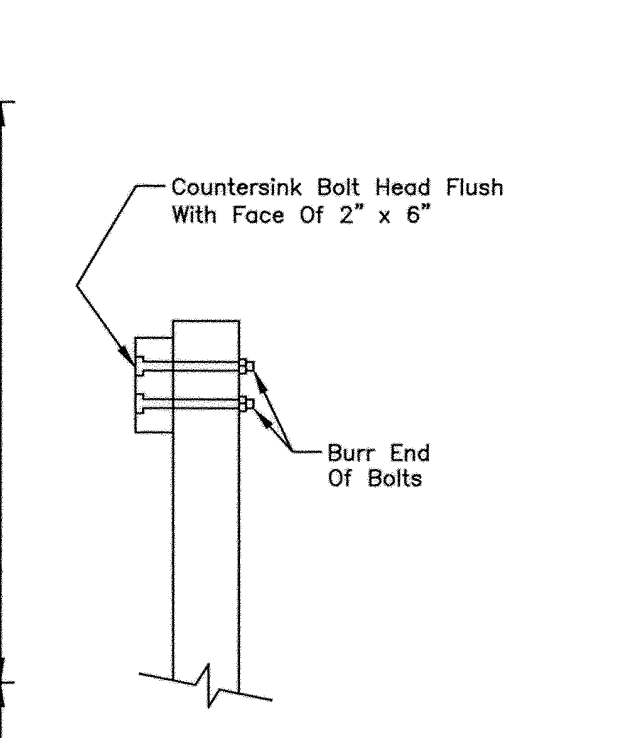
THICKENING EDGE DETAIL

PAVING AND DRAINAGE MAINTENANCE BOND:

- FIRST YEAR - 10% OF CONSTRUCTION COST
- SECOND YEAR - 10% OF CONSTRUCTION COST
- THIRD YEAR - 10% OF CONSTRUCTION COST
- FOURTH YEAR - 10% OF CONSTRUCTION COST
- FIFTH YEAR - 10% OF CONSTRUCTION COST

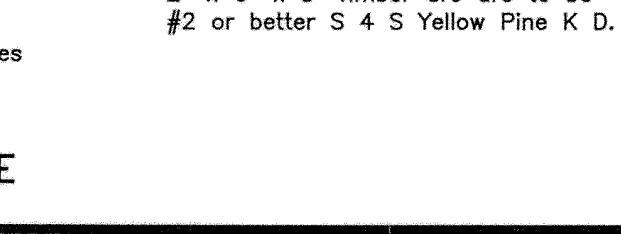


HEADER CURB DETAIL



NOTES:
- 4" x 4" x 7' Timber are to be #2 or better S 4 S Yellow Pine, Walmalized or Penta Treated.
- 2" x 6" x 8' Timber are to be #2 or better S 4 S Yellow Pine K D.

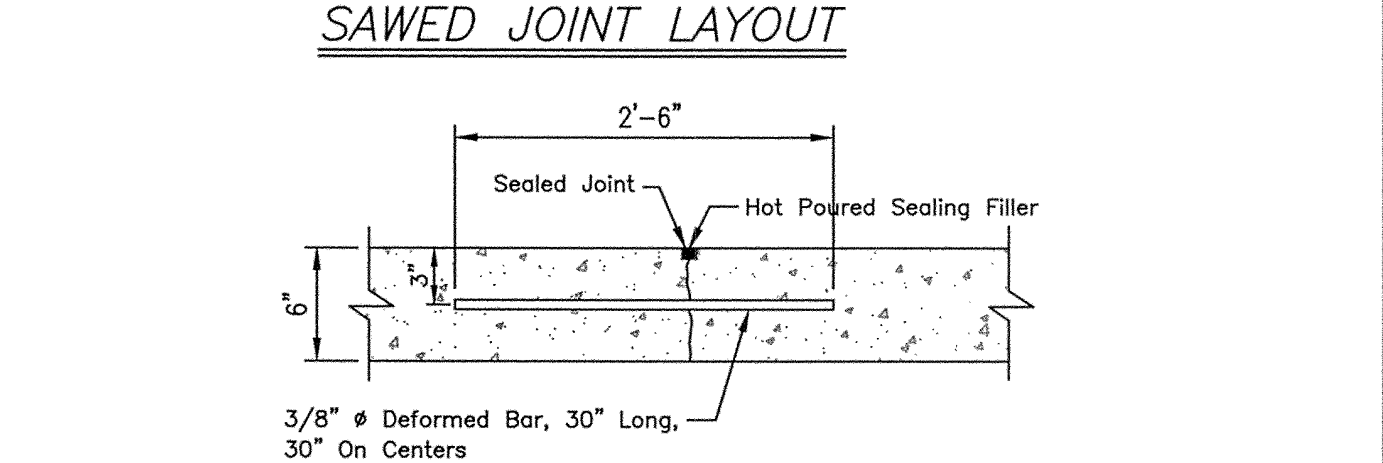
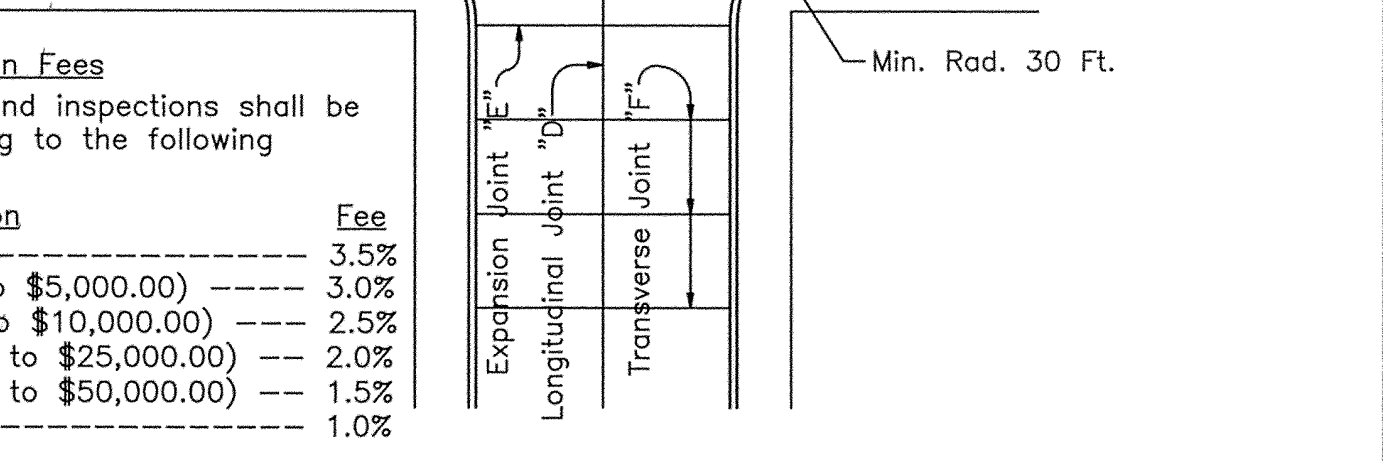
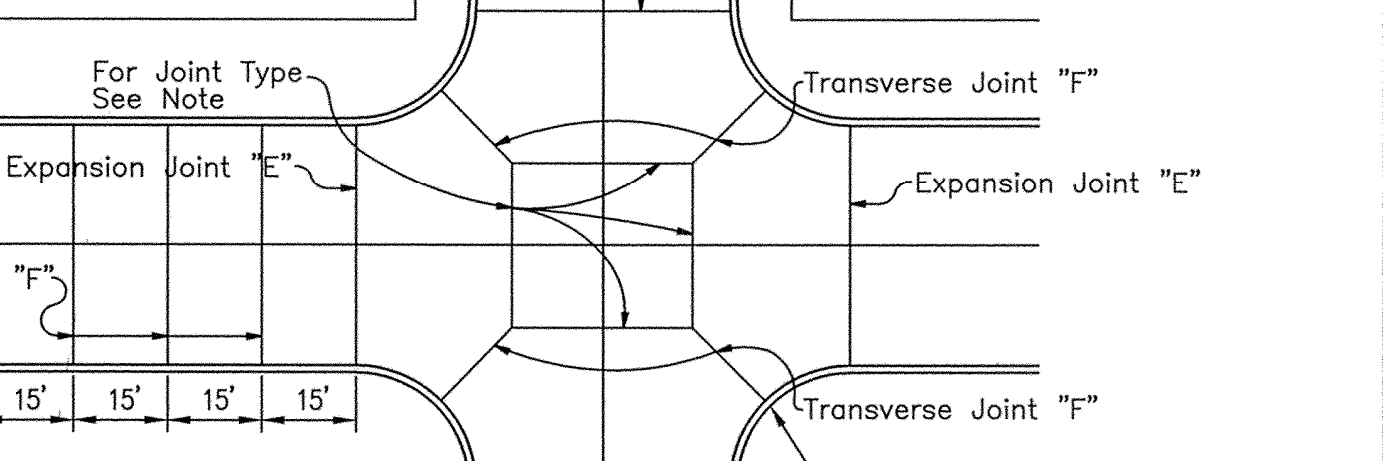
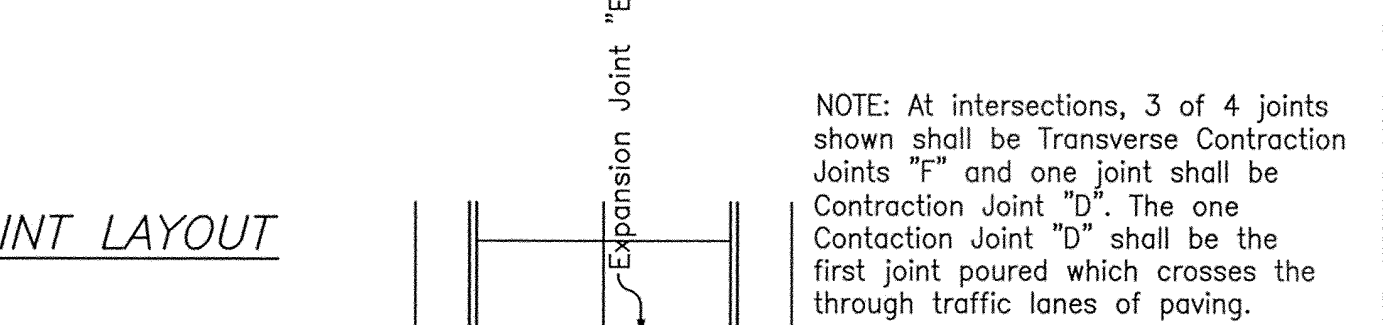
SAWED JOINT LAYOUT



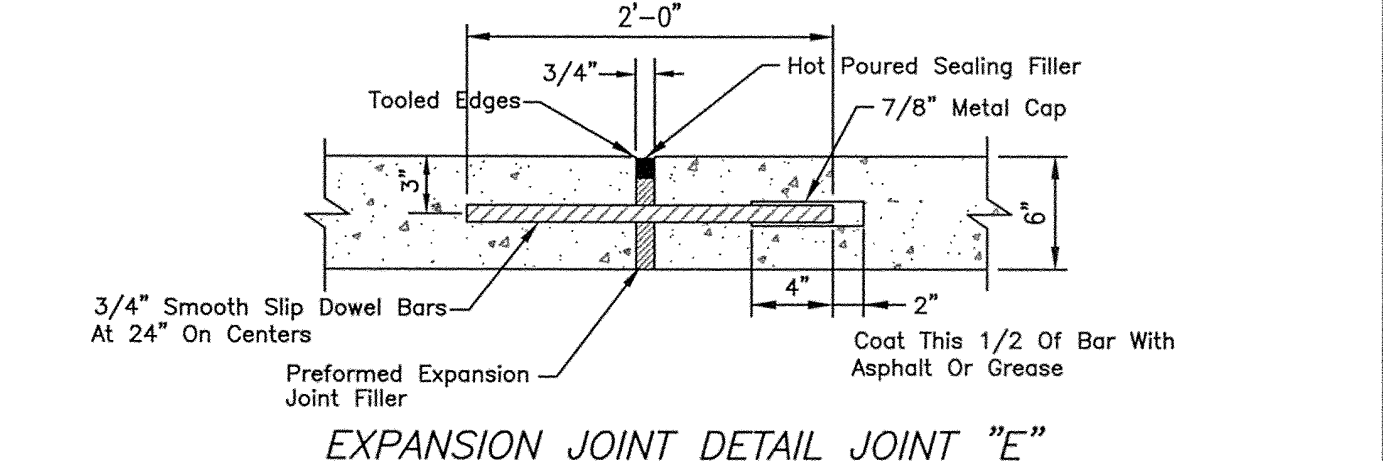
SECTION LINE WIDENING

Choctaw Standard Construction Fees
(a) The fee for supervision and inspections shall be paid to the City according to the following schedule:

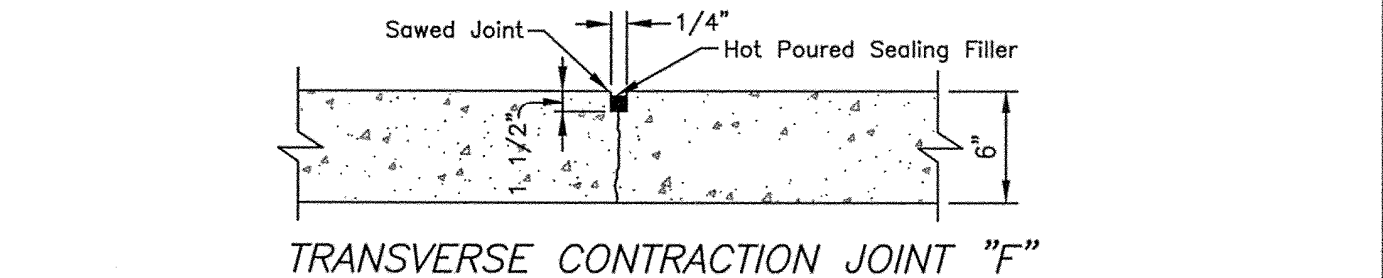
Estimated Cost of Construction	Fee
Up to \$2,000.00	3.5%
Next \$3,000.00 (\$2,001.00 to \$5,000.00)	3.0%
Next \$5,000.00 (\$5,001.00 to \$10,000.00)	2.5%
Next \$15,000.00 (\$10,001.00 to \$25,000.00)	2.0%
Next \$25,000.00 (\$25,001.00 to \$50,000.00)	1.5%
Next \$50,000.00	1.0%



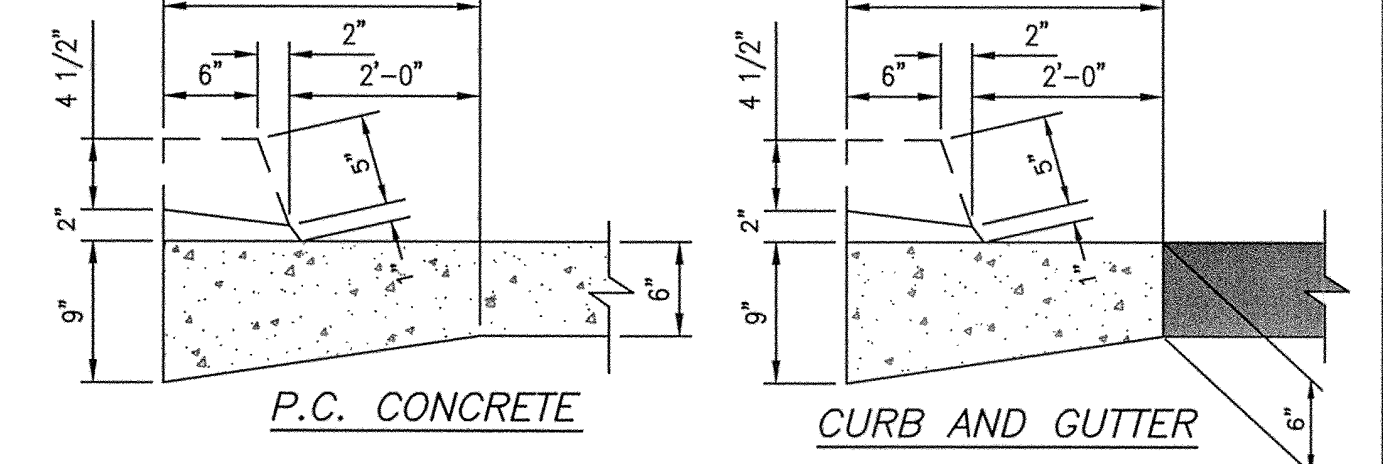
LONGITUDINAL CONTRACTION JOINT "D"



EXPANSION JOINT DETAIL JOINT "E"



TRANSVERSE CONTRACTION JOINT "F"



TYPICAL SECTION TO BE USED WHERE CURB IS OMITTED

APPROVED *John W. Baxter*
John W. Baxter, P.E.
City Engineer

DESIGN STANDARD DETAILS
CITY OF CHOCTAW OKLAHOMA
STANDARD PAVING SECTIONS & DETAILS