

# SUSTAINABILITY E-NEWSLETTER

Photo courtesy mayang.com

March 1, 2010

DEPARTMENT OF  
CENTRAL SERVICES,  
OFFICE OF FACILITIES MANAGEMENT

Volume 2, Issue 1

## Fleet Recognized by 'Top 100 Green Fleets'

The Oklahoma Department of Central Services Fleet Management Division's Alternative Fuels Program (DCS-AFP) was recognized by "The 100 Best Fleets", "Government Green Fleet Award." The DCS-AFP received a ranking of 37<sup>th</sup> nationally.

DCS-AFP recently received a certificate by Tom C. Johnson, Director of 100 Best Fleets. Johnson stated that out of 38,000 possible fleets in the United States, 9,000 applications were sent to eligible candidates. 100 Best Fleets



identifies and honors top performing fleet operations in North America.

The Government Green Fleet Award "criteria of excellence" includes: Accountability, Use of Technology & Information, Collaboration, Creativity, Celebration, and Evidence of a

High Trust Culture, Performance Recognition, Doing It Right the First Time, Quick Efficient Turnaround, Competitive Pricing, Staff Development and Resources Stewardship. 100 Best Fleets identifies and encourages ever-increasing levels of  
*(Continued on page 3)*

### INSIDE THIS ISSUE:

<u>How Does It Work??: Automatic Flush</u>	2
<u>Word Association - "Making Ice"</u>	2
<u>RE-INVENT YOUR PRINT</u>	3
<u>FM Recognized as 'Top 100 Green Fleets'</u>	3
<u>Recycling Program Rolls Out on Earth Day</u>	4
<u>Energy Champion Spotlight</u>	4
<u>Did You Know?</u>	4

### Green Fingerprint

#### Sustainability Commitment:

*"We, the public servants of the state of Oklahoma, are hereby committed to the conservation of resources and the protection of future generations through the promotion and implementation of*



## Recycling Program Rolls Out on Earth Day

This year marks the 40th anniversary of Earth Day, which was founded to raise awareness about the environmental consequences of air, water, and ground pollution. On April 22, DCS will celebrate Earth Day by kicking off a recycling program to include plastic, aluminum, and paper.

The Office of Facilities Management (OFM) is partnering with State Surplus to ensure recyclable waste generated by state-owned buildings is kept out of landfills, bodies of water, and animal habitats.

The decision to recycle is a no-brainer; you

*(Continued on page 4)*



## How Does It Work?: Automatic Flush

Last year, OFM water conservation efforts saved more than 3.9 million gallons of water (7% of total consumption). The installation of low-flow urinals with automatic flush valves was a key contributor to the savings and offered improved hygiene in addition to added efficiency.

You may have noticed a few more recent upgrades in Capitol Complex restrooms. Most faucets are now equipped with flow reducing aerators and new 1.6 gallon per flush (gpf) toilets have

replaced 3.5 gpf toilets.

To ensure the intended effectiveness of the 1.6 gpf toilets, OFM also replaced manual flush valves with automatic flush valves designed for low-consumption toilets. Flush valves with single and dual override buttons were used in specific applications during the retrofit to maximize the efficiency of the new toilets.



Did a toilet flush too soon? Here's the step-by-step sensor process from Sloan Valve

Company:

1. A continuous, invisible light beam is emitted from the sensor.



2. As the user enters the beam's effective range (22" to 42") the beam is reflected into the scanner window and transformed into a



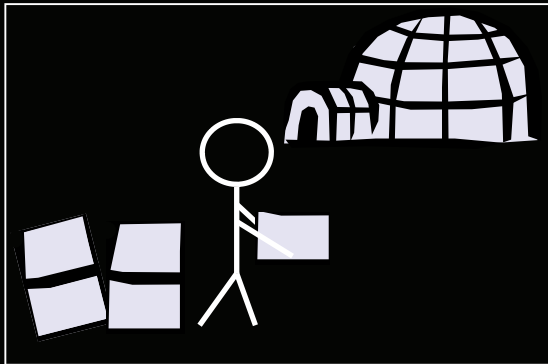
low voltage electrical circuit. Once activated, the output circuit continues in a "hold" mode

for as long as the user remains within the effective range of the sensor.

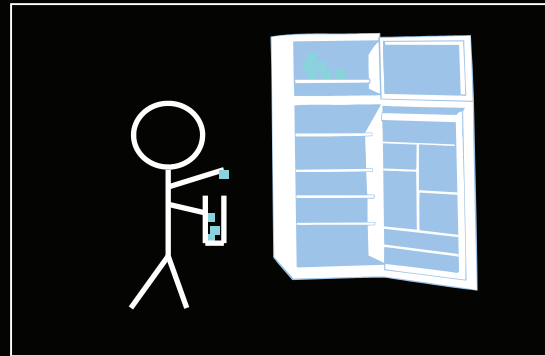
3. When the user steps away from the sensor, the circuit waits 3 seconds (to prevent false flushing) then initiates an electrical signal that operates the Solenoid. This initiates the flushing cycle to flush the fixture. The Circuit then automatically resets and is ready for the next user.

Please send all auto-flush related issues & questions to: [liz\\_haigh@dcs.state.ok.us](mailto:liz_haigh@dcs.state.ok.us)

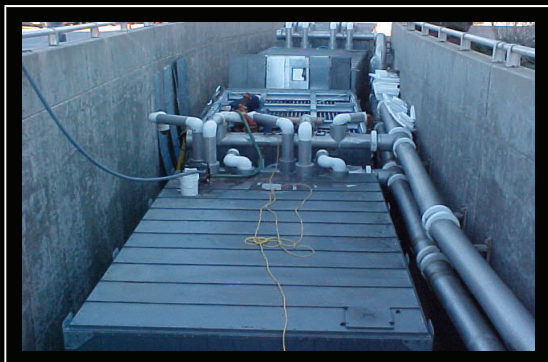
### Making Ice.



### Making Ice.



### Making Ice?



Find out how in the September 2009 issue of the Sustainability E-Newsletter.

**CLICK HERE** to visit the newsletter archives.

## DCS Sustainability Plan: *Re-Invent Your Print!*

DCS is expanding its existing Green Fingerprint Campaign and challenging all employees to “Re-Invent Your Print!”.



During the course of every work day, we complete many tasks which consume valuable energy and resources. By re-thinking and changing our daily behaviors, we can easily conserve resources and re-invent the fingerprints we leave behind.


Green fingerprints result from recycling as much as possible and buying products with recycled con-

tent, reusing containers and products, and reducing energy waste by turning off computers, electronics and appliances. All divisions within DCS are working together to incorporate these simple and cost effective tasks, and many other initiatives, into its’ Sustainability Plan.

In response to SB833, which requires all state agencies to implement energy efficiency and conservation plans, DCS has named Liz Haigh as Sustainability Coordinator. She is in charge of implementing DCS’ plan as well as administering the requirements of SB833, including providing resources to assist agencies with energy savings, conservation efforts and SB833 plans.

Please look for ongoing communication from Liz and the Sustainability

Team and contact her at [liz\\_haigh@dcs.state.ok.us](mailto:liz_haigh@dcs.state.ok.us), 405.521.3315 with questions or to submit your agency plan. Whether your agency employs 5 or 500, owns or leases its office space, there are many opportunities to examine your operations and execute a plan to Re-Invent Your Prints!

The Energy Star website contains many tools for benchmarking, setting goals and discovering the most energy efficient ways of green building, renovating and purchasing. Energy Champions are encouraged to visit the [Bring your green to work with ENERGY STAR®](#) site for free posters, tips and facts that will help raise awareness and encourage participation in conservation initiatives. 



*“By re-thinking and changing our daily behaviors, we can easily conserve resources and re-invent the fingerprints we leave behind.”*




## Fleet Recognized by ‘Top 100 Green Fleets’ (continued)

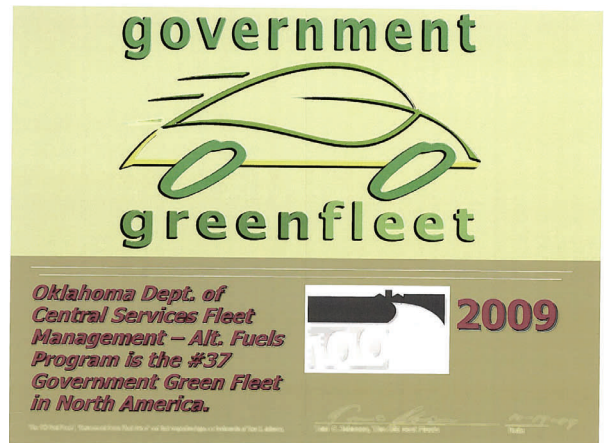
*(Continued from page 1)*

performance improvement within the fleet industry.

DCS-AFP currently has 521 vehicles that operate using some form of an alternative fuel including: E85, CNG, hybrid, and neighborhood

electric vehicles (NEV). Congratulations to Brandy Winget, Director of DCS-AFP. Brandy considers it a great honor to receive this award. 

*Special thanks to Staci Woodberry of Fleet Management for this contribution to the Sustainability E-Newsletter.*



# RE-INVENT YOUR PRINT!

## Energy Champion Spotlight



Terri Berry, Human Resources Manager, Office of Personnel Management, has worked for the State for 23 years. She has worked for OPM three different times; her current stint beginning on November 1, 2004. Leaving a green fingerprint at work is important because it carries over into our personal lives, saves money and energy and conserves our state's natural resources for the future. It is also important to set a good example for the public.

Terri is currently working to significantly decrease paper usage by imaging all internal OPM human resources files. OPM has already imaged over 60,000 state employee human resources files (or 2.5 million pieces of paper). All paper files will be destroyed by shredding and recycling. OPM also participated in the Earth Day CFL Exchange. Terri ensures her computer is in standby mode when she is away and is diligent in distributing the Sustainability E-Newsletter to OPM employees each quarter.

Editor: T.O. Bowman  
 Phone: 405-522-0049  
 Fax: 405-522-2230  
 E-mail:  
[thomas\\_bowman@dcs.state.ok.us](mailto:thomas_bowman@dcs.state.ok.us)

Department of  
 Central Services,  
 Office of Facilities Management

Will Rogers Building  
 2401 N. Lincoln Blvd., Suite 112  
 Oklahoma City, OK 73105

## Energy Champions

Office of the State Auditor & Inspector	Georgia Godwin
Oklahoma Arts Council	Michele Gann
State Department of Education	Kent Tippin
Oklahoma Conservation Commission	Karla Beatty
Oklahoma Tax Commission	Paula Ross
Oklahoma Department of Human Services	Adele Jack
Treasurer's Office	Kathy Ernst/ Amy Sparks
Oklahoma Water Resources Board	Chris Neel
Office of Personnel Management	Terri Berry
Oklahoma Department of Environmental Quality	Fenton Rood
Office of the Secretary of the Environment	Amanda Storck
Office of the Secretary of Energy	Cassie Gilman
Teacher's Retirement System	Donna Spurrier
Department of Mental Health & Substance Abuse Studies	Shawn McCarty
Tourism & Recreation Department	Jessica Blackstock
Oklahoma Department of Career & Technology Education	Donna Sinnes

## MISSED AN ISSUE?

[CLICK HERE](#) TO SEE  
 THE SUSTAINABILITY  
 E-NEWSLETTER ARCHIVES

## Recycling Program...

(Continued from page 1)

can either throw a used soda can in a trash bin or simply move a few inches over and recycle it.

Recycling causes only slight adjustments to routines,



but the principles such as responsibility and stewardship of resources, can have a lasting effect on other aspects of our lives.

Phase I of the new program will begin services at the Capitol building; subsequent phases will expand the program to serve other buildings in the Capitol Complex.

For questions about the Recycling at the Capitol please email: [thomas\\_bowman@dcs.state.ok.us](mailto:thomas_bowman@dcs.state.ok.us).

Did you know?  
 ...a space heater running for 4 hours a day for a week generates the same amount of CO<sub>2</sub> as driving a city bus from OKC to Tulsa...